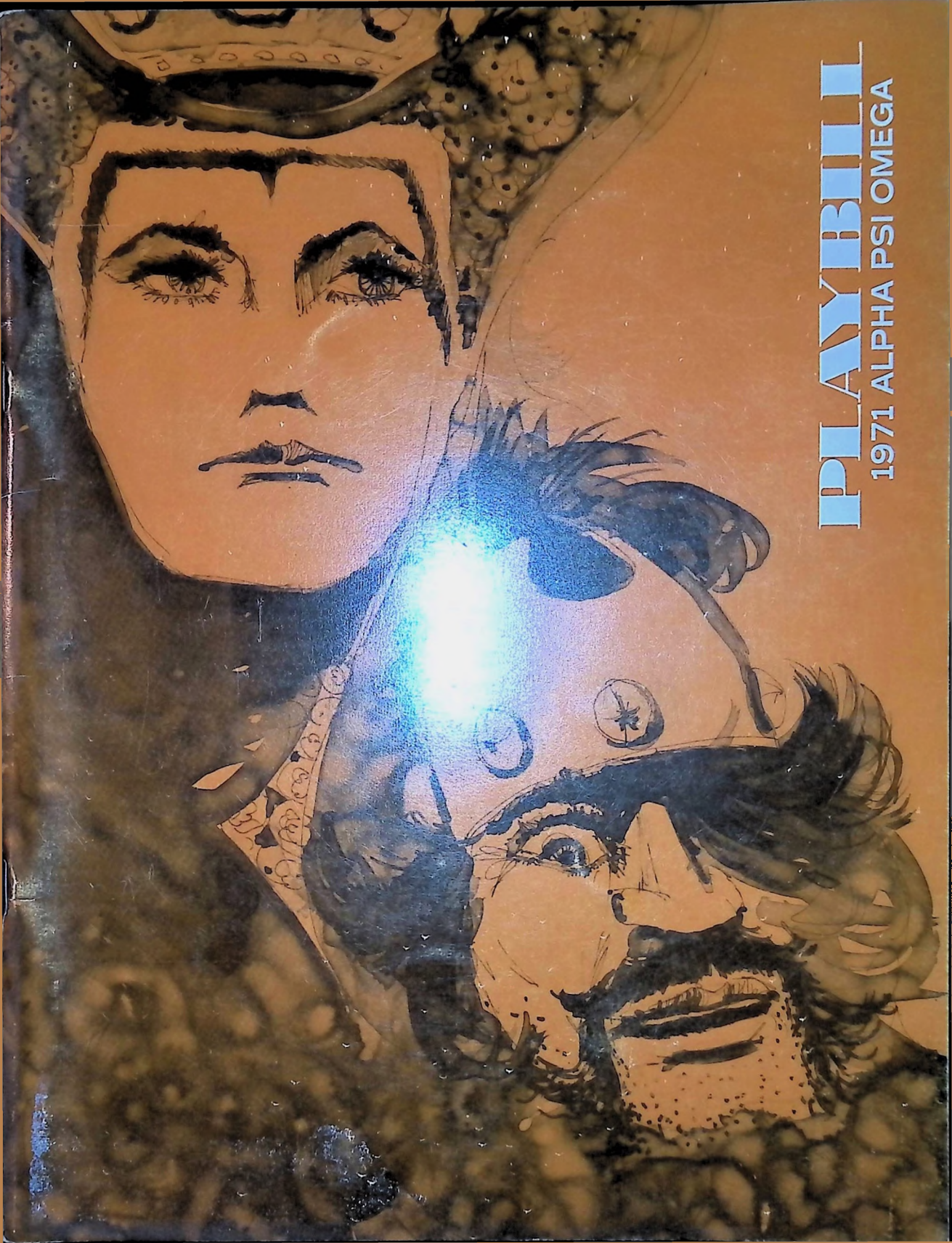


PLAYBILL

1971 ALPHA PSI OMEGA



The President's Page

The fraternity is continuing to grow and expand. Each week brings petitions into the national office inquiring about membership into the national honor fraternity from various colleges and universities. The history of the fraternity covers a little more than fifty years, making it one of the oldest fraternities existing in this country. It was organized with a twofold purpose: 1) To offer creative expression for the college and university drama student, as well as serving as an entertaining and informative source for the community, and 2) To provide a national honor organization for those students doing a high standard of work in dramatics. When the drama student becomes aware of his potentialities in the role of the present social and economic system, he can be of tremendous assistance to himself and to the community by portraying the various roles that reveal the problems of our lives. He understands that to continue the search for self among chaos is to have an extraordinary relevance to our times. Plays are being produced by the fraternity that contribute to the thrust of dramatic literature. A search through the *Playbill* reveals this to be true. The diversity of plays listed in the fraternity periodical makes for stimulating schedule of performances. It shows that the fraternity presents quality theatre.

The drama student knows that emphasis is now being



placed on formal theatre techniques and on significant, practical ideas and concepts in theatre that affect the community and professional levels as well as the campus theatre. Educational theatre is now used to enriching the lives of all students and offers the opportunity to see good theatre directing as well as to participate in its productions. After years of operating on the college and university campus, the educational theatre is reaching a turning point where genuine respect for its art is being seen and it is becoming an exciting part of academic learning.

As this issue of the *Playbill* will reach you before the Grand Rehearsal of the fraternity, called for the summer (August), 1972 in San Francisco, it is hoped that each chapter will send a representative to the meeting. We wish to have a large number of members who will meet for one day during the AETA convention in San Francisco, at the San Francisco Hilton Hotel, August 20 through August 23, 1972. Let us not ask "what have you done for me lately?" You come to the tenth Grand Rehearsal of the fraternity and find out what has been done, what is to be done, and what you can do to help the fraternity. Do you believe as the great Pablo Picasso who said "You do it first, and someone else does it pretty?"

Fraternally,

Contents

Extended Comments	2
Most Produced Shows from 1967-1971	
One Hundred Most Produced Plays	3
Ten Most Produced Plays of 1967-71	4
Five Most Produced Plays of 1971	7
Most Produced Musicals	9
Most Produced Playwrights	12
Once-Upon-a-Time	15
On The Road	19
Readers' Theatre Productions	23
Outstanding Student Performances	27
Cast Report	31
Directory	50

Playbill is published annually by the Alpha Psi Omega Dramatic Fraternity to afford college and university dramatic organizations the opportunity to acquaint themselves with what is being done by their contemporaries and to serve the Fraternity as an official organ.

The word **Playbill** is used in the title of this magazine by permission of **Playbill**, 579 Fifth Avenue, New York, New York 10017.

Direct all business communications to the Grand Business Manager.

Grand Director and Business Manager
Dr. Yetta G. Mitchell
P. O. Box 322
Waxahachie, Texas 75165

Editor and Grand Stage Manager
Dr. Donald P. Garner
Eastern Illinois University
Charleston, Illinois 61920

Cover: Illustration by Richard Hazen
Text: Illustrations by Linda Hazen
Composition and printing by McQuiddy Printing Company

TEN OF THE MOST PRODUCED PLAYS OF 1967-71



4 National College of Education: Merle Weiss, Joan Dixon, and Carl Berg in *The Crucible*. Richard Bagg, director. Virginia Walker, scene director.

The ten most consistently produced plays by Alpha Psi Omega colleges and universities in each year between 1967 and 1971 were: *Thurber Carnival*, *Barefoot in the Park*, *Dark of the Moon*, *Glass Menagerie*, *The Crucible*, *The House of Bernarda Alba*, *J.B.*, *Miracle Worker*, *A Man for all Seasons*, and *The Lion in Winter*. The list does not include musicals, children's plays, readers' theatre shows, plays of Moliere and Shakespeare, and the five most produced plays of 1971. All of these categories are being used for other comments. The pictures of ten different colleges and universities were chosen to comment on their 1970-71 productions of these plays.

An analysis of the ten plays would reveal that two, *The Crucible* and *The Lion in Winter* are historically based. *The Miracle Worker* is biographical in nature and *J.B.* is a modern version of an Old Testament story. *Thurber Carnival* is a review of James Thurber's works. Therefore, half of the plays on the list have been based on already existing materials. The casts of the ten shows range in size from four to twenty-four and averaged thirteen members with the mean size being fourteen. All except one of the plays, Lorca's *House of Bernarda Alba*, are American.



Saint Mary of the Plains College: Michael Keeffe, Carolyn Schultz, and Joyce Fair in *Barefoot In The Park*. Barry Alexander, director. James F. Franklin, scene designer.

Left: Middle Tennessee State University: Henry Murray, Connie O'Connell, Lane Davies and Jeanne Riggan in *The Lion In Winter*. Dorthea Tucker, director.



Rocky Mountain College: Marlene Bond, Ellen Snortland, Kathy Young, Joanne Peterson, Glee Murray, and Jois Walmesley in *The House Of Bernarda Alba*. D. E. Moffitt, director. Alan Newberg and Bob Crowe, scene designer.

Left: Northwestern College: Susan Klay, Leonard Lee and Sue Schutte in *A Man For All Seasons*. Theora England, director.



Right: Southern State College: Charlie Hildreth, Dee Post, and Kay Bland in **Miracle Worker**. Jake J. Whitehead, director. Billy Barnett, scene designer.

Below: Central College: Doug Hockstra and Jack Lindine in **J.B.** John E. Torrance, director. Robert Wegter, designer.



Right: Clarion State College: Polly Points, Sam Busco, Eloise White, Paul Gaffney, Terry Halula, Diana Summerville, and Jan Baughman in **Dark Of The Moon**. Dr. Bob Copeland, director. Dr. Adam Weiss, scene designer.



Right: William Jewell College: Gail Bernhard, Howard Jones, and Maryan Ainsworth in **Thurber Carnival**. Dennis M. Murphy, director and scene designer.



Right: University of Dubuque: Joy Butler and Danny Day in **Glass Menagerie**. Professor H. Rudenshiold, director. Dr. Ray Thompson, set designer.



FIVE MOST PRODUCED PLAYS OF 1971

Over 385 different major productions were reported by Alpha Psi Omega member colleges and universities in the 1970-71 year. Out of that number, five plays were the most produced: *Who's Afraid of Virginia Woolfe*, *Blithe Spirit*, *Rosencrantz and Guildenstern*, *Summertime*, and *A Funny Thing Happened on the Way to the Forum*. From the many production pictures, five pictures from five different colleges were selected to comment.

A review of the five plays reveals that all are on the Alpha Psi Omega's 100 Most Produced Shows. Only one of the five would be considered an old play, Noel Coward's *Blithe Spirit*. No playwright was represented by more than one play in the five most produced plays of 1971.



Carroll College: Robert Kohl and Joseph Iaquina in *A Funny Thing Happened On The Way To The Forum*. David Molthen, director. Wayne L. Christensen, designer. Marcia Parmenter, costume designer.



*Monmouth College: Larry Walton, Anni Kitay, Michael Rand, Barry Rebo, Patti Taylor, and Lars Guy in **Summertime**. Lauren K. Woods, director. Robert Kauffman, scene director.*



*New Mexico State University: William Bell, David Guiffre, Ralph Wilcox, Linda Lynch, Herb Seamans, Elaine Wilcox, Ruth Riggs and James Connelli in **Rosencrantz and Guildenstern Are Dead**. James Gilbert, director and designer.*



*Above: Georgia State University: Stuart Culpepper, Ruth Howell, John Ogden, and Rosamond Robinson in **Who's Afraid Of Virginia Woolfe?** Stuart Culpepper, director.*

*Below: South Dakota State University: Barbara Schnell, Ardella Kleinsasser, Wayne Fenner, Steve Ide, and Marla Muxen in **Blithe Spirit**. Dr. Judith Zivanovic, director. Mr. Joel Hefling, designer.*





*Mansfield State College: Tim Young in **Stop The World, I Want To Get Off**. Gordon A. Jacoby, director. R. Guy Miller, scene designer.*

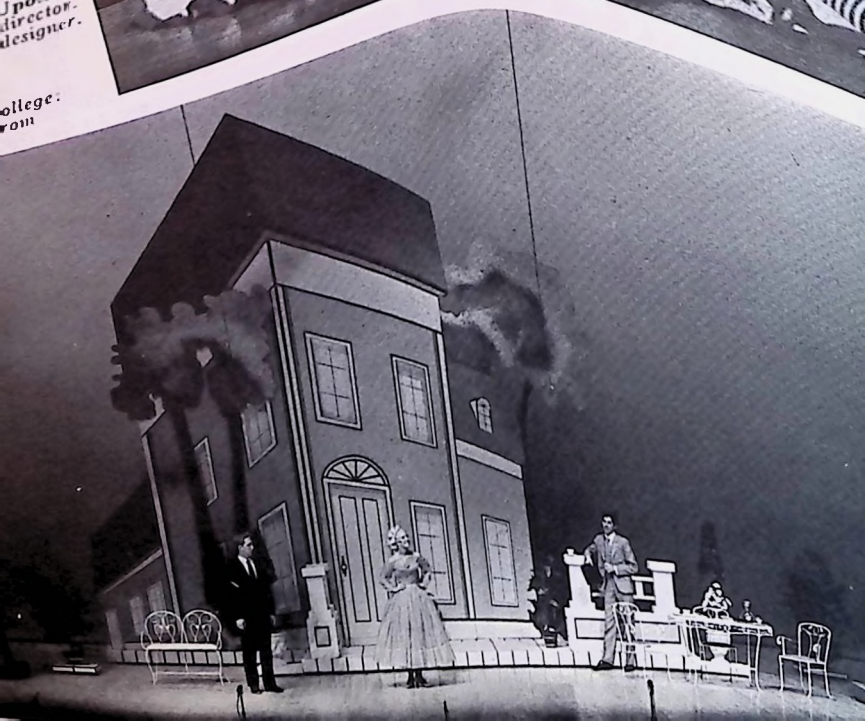
MOST PRODUCED MUSICALS

Thirteen musicals appear on the Alpha Psi Omega's 100 Most Produced Shows. One musical, *The Fantasticks*, is probably the most produced show out of the hundred. Others were: *The Boyfriend*, *Brigadoon*, *Celebration*, *Hello Dolly*, *Man of La Mancha*, *Oklahoma*, *Once Upon A Mattress*, *Pajama Game*, *Sound of Music*, *Stop the World*, *Threepenny Opera*, and *West Side Story*. Pictures from eight musicals on the list were submitted by Alpha Psi Omega colleges and universities during 1970-71. They are used here as a pictorial comment on musical theatre.



ation:
an and
pon A
director.
designer.

college:
rom





MOST PRODUCED PLAYWRIGHTS

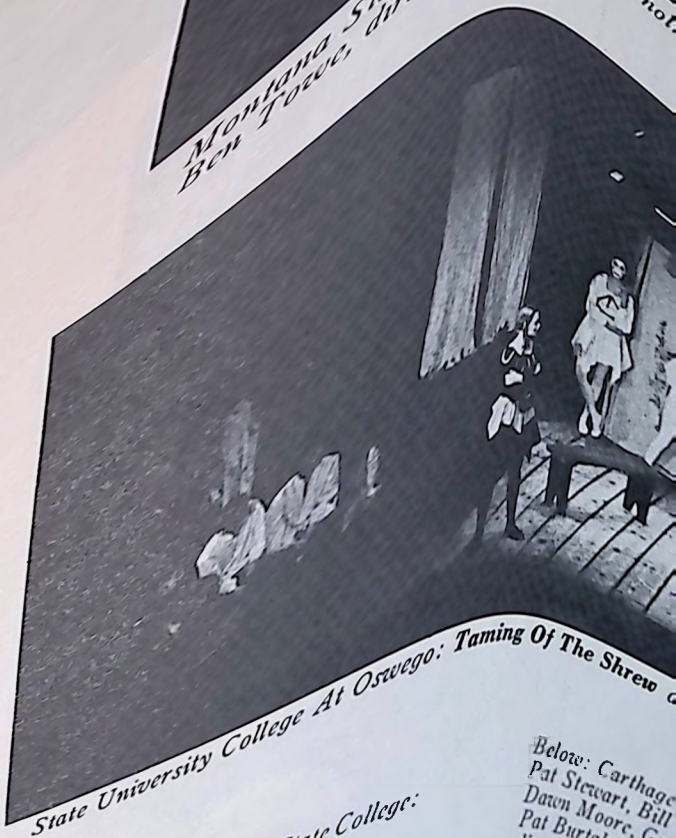
Out of the Alpha Psi Omega's list of 100 most produced plays, two playwrights were most popular. More plays of Shakespeare and Moliere were done than the total number of works by any other playwrights on the list. Furthermore, each of them was produced every year for the past five years. Analysis of scripts would reveal that of the six Shakespeare plays listed here, the average and the mean cast size is 21 people. The Moliere plays have an average cast of 12 people.

Shakespeare's *As You Like It*, *Twelfth Night*, *Romeo and Juliet*, *A Midsummer Night's Dream*, *Taming of the Shrew*, and *Macbeth* are pictured here in 1971 productions. *Hamlet* and *The Merchant of Venice* were also among the APO-100. The four Moliere plays, *The Misanthrope*, *The Imaginary Invalid*, *Tartuffe*, and *The Miser* are also shown as a pictorial comment on these centuries old plays being done in American colleges and universities in 1971.



Buena Vista College: Jane Ruscio in *As You Like It*. Travis P. Lackhart, director. Debbie Ball, scene designer.

Montana State University: Dave Sederhot.
Ben Force, director.



Below: Southwest Missouri State College:
John Oak and Carol Wright in
Twelfth Night. Robert Bradley, director.
Byrne Blackwood, scene designer.



Below: Carthage
Pat Stewart, Bill
Dawn Moore, Gar,
Pat Burtak in **Rom**
director, Mr. W. J.





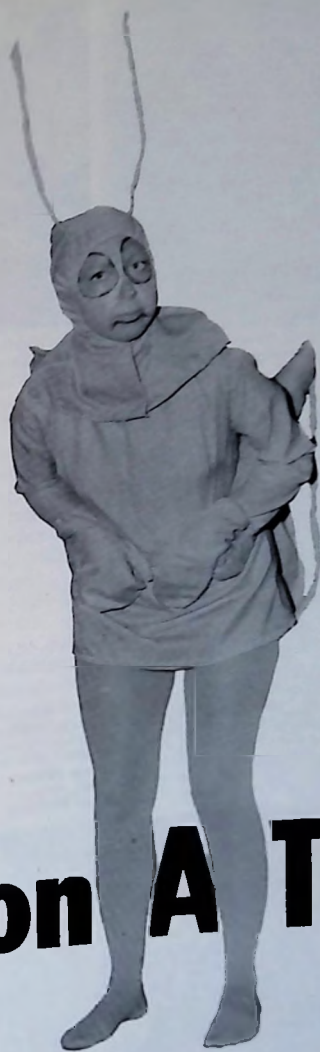
*The Elizabeth Hatlings, Lucky Noll, Rob Trebbe and
the Imaginary Invalid.*



*Above: University of Dubuque: Maureen Kelley, Bob Mond, Tom Cunliffe,
Paul Jerrett and Kate Mulgrew in The Miser. Dr. Ray Thompson, director.
Professor Harry Rudenshiold, set designer.*



*Right: Central College:
Maurice Birdsall and
Bonnie Popp in Tartuffe.
Robert Wegler, director and
designer.*



Once-Upon A Time

ALPHA PSI CHAPTERS
PERFORM FOR CHILDREN

*Southern State College:
Dee Post in **Once Upon
A Clothesline.**
Margaret Harton, director.
Bill Barnett, scene designer.*

The variety of children's plays being produced on college campuses across the country is rapidly expanding. A medium which once seemed to be limited to the classroom or laboratory theatre or even more frequently, to theory and textbooks is now becoming a regular part of many college performance schedules. Furthermore, theatre for children is becoming a favorite kind of touring show—and why not? Is there a more foolproof audience than children?

The once-upon-a-time absence of children's theatre could have been the result of many things. There is not a great amount of published material in this area and that reason itself explains the limited use of what was

available; "Everybody else does that show!" And not so very long ago, time, money and instruction for creative dramatics and children's theatre was minimal so conventional "legitimate" works took precedence. But the scene has changed. No longer do we read of only a few well-worn and much-loved fairy tales being blithely stuck on a stage and played for the local children. The materials nowadays range from, yes, the well-worn but well-staged fairy tales to original plays to adaptations of classic children's literature as well as mythology and even Shakespeare. In the following paragraphs, follow the treatment of all kinds of subjects as visualized in the eyes of creative adults to be realized before the imaginative minds of children.

Subject: CHILDREN'S CLASSICS

Looking first at plays based on classic children's literature, two casts, *Northeast Louisiana University* at Monroe and *Marietta College* in Ohio produced Ed Graczyk's "Aesop's Fables." The latter performed for a total audience of 5,000 children in Ohio and West Virginia and utilized a rock band, an op-art set painted in day-glo, black light and strobe light effects. Another interesting contrast for a single fable: *The State University of New York at Albany* mounted and performed "on the road" "The Tortoise and the Hare" for 5,500 children while *Middle Tennessee State University* at Murfreesboro under the direction of Mrs. Dorothe Tucker, presented their version of the story entitled "The Great Cross Country Race." They report:

The children in the audience held their breaths as the cocky hare and the 'slow and steady' tortoise did warm-up exercises at the starting gate on the stage. Then the Brave Badger cried 'Ready, Steady, Go' and the race was on! Naturally, the hare immediately took the lead but as the race continued (through the aisles of the audience) patience won the victory for the tortoise, who crossed the finish line amid the encouraging cheers of the little spectators.

He who hesitates is lost (but is rested up for the next round!)

At New Wilmington, Pennsylvania, the *Westminster College* cast produced the A. A. Milne classic, "Winnie the Pooh," which was directed by student Marc Ivancic. Mrs. S. Lister, head of the speech and theatre department at *Mt. Mary College* in Milwaukee, Wisconsin,

Below: Northwestern College:
Keri Vande Hoet, Howard Wagenaar,
Marcia Olivier, Howard Moths,
Craig Vande Velde and Sandy Vlieger
in *Jack And The Beanstalk*.
Theora England, director.
Keith Allen, scene designer.

Right: Northwestern College:
Daria Harnes, Allyson Drake,
Barbara Penning, Scott Lammers,
Gloria Vande Berg and Howard Moths
in *Sleeping Beauty*.
Theora England, director.
Keith Allen, scene designer.



*New Mexico State University: John George, Rose Schweiss, Denise Chavez and Irene Oliver Lewis in **Beauty And The Beast**. Mercedes Gilbert, director. James Gilbert, scene designer.*



wrote the script and directed her cast in a musical version of Johanna Spyri's "Heidi" this year. *Northern Montana College* at Havre toured their area with the mysterious "Alladin and the Wonderful Lamp" while in an opposite corner of the country, "Trudi and the Minstrel," and "Topsy Turvy Town," were done by the *University of Miami* at Coral Gables. They also performed a classic; (though not from children's literature) "Twelfth Night" was adapted by a graduate student, Eleanor Ankrom and directed by grad student Robert Stlveste. Also, "The Amorous Flea" was produced by a class and toured to various clubs in the area and even played for a benefit for Variety Children's Hospital.

Subject: MODERN CHILDREN'S LITERATURE

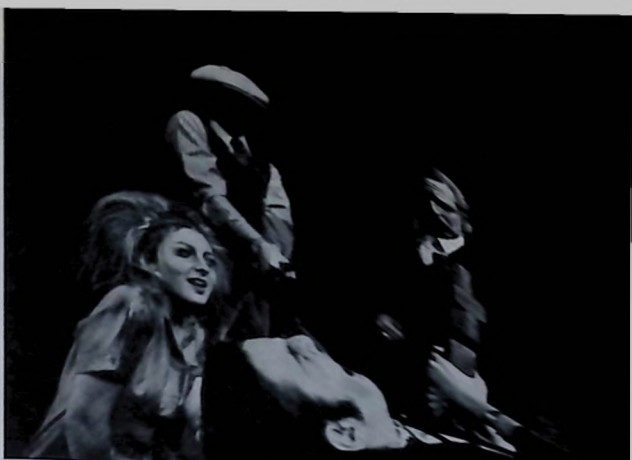
More recent children's literature is not going unnoticed as material for plays. Whether ten years old or a hundred, some works are so familiar that they are almost classics during the lives of their authors. *Mercyhurst College*, for example, in Erie, Pennsylvania, did selections from "Tom Sawyer" and "Peanuts" for schools in that area, both of which are undeniably standards today. Dr. Suess's characters from "If I Ran the Zoo" came alive on the stage of *Monmouth College* in West Long Branch, New Jersey, where "The Magic Sword" and the "Tinder Box" were also presented.

Subject: HOLIDAYS

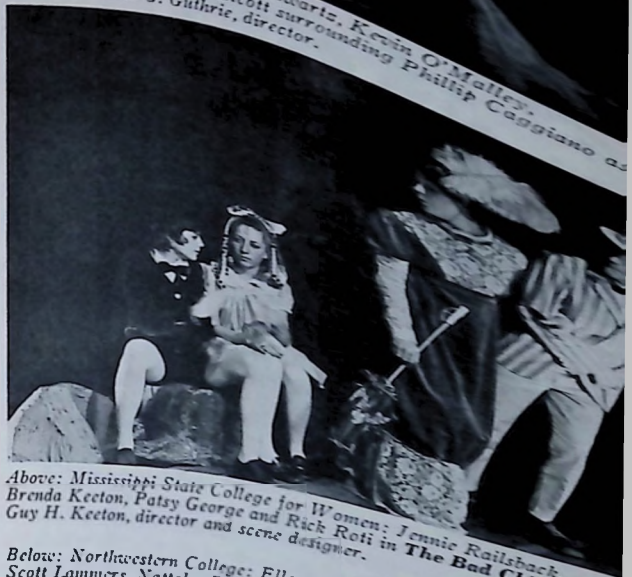
At least two schools have found holidays as an excuse for presenting plays for children. At *Eastern Montana College* in Billings, the Alpha Psi cast performance of "Greensleeves Magic" was given as a Christmas gift to children of the community while *Saint Mary of the Plains College* did a special program called "Christmas Around the World." At *New York University* in New York City, "Dracula" was cut to 48 minutes in length and done as a children's Halloween's show. Set in the '30's and styled as a pure melodrama, the show was a technical nightmare with over 60 light and sound cues and projections consisting of more than 60 sets of slides, parts of "Dracula" were seen on WPIX-TV as a Halloween feature.

Subject: FAIRY TALES

The timeless fairy tales that are known to children everywhere are popular subjects for plays. One thing that makes the stories so interesting is that, even though the plots may remain the same, the yarn is never told the same way twice. No two children know exactly the same version; possibly because they have been handed down by word of mouth from generation to generation for centuries. So the tales lend themselves well to creativity of the players despite the somewhat set story line. At *Dana College* in Blair, Nebraska, Vicky Lee, an advanced theatre student produced an adaptation of a Hans Christian Andersen fairy tale, "The Emperor's Nightingale." It played to over 2,000 elementary children and a large portion of the campus community. "Pinochio" and Gammer Gurton's "Needle" were presented by *Mississippi State University* in State College. In Joplin, Missouri, the young children were treated to performances of "Rumpelstiltskin" and "Robin Hood" while the cast of *Missouri Southern College* made a profit from their performances



New York University: Ellen Schwartz, Kevin O'Malley, Richard Gang and Karen Escott surrounding Phillip Caggiano as Dracula. David G. Guthrie, director.



Above: Mississippi State College for Women: Jennie Railsback, Brenda Keeton, Patsy George and Rick Roti in *The Bad Children*. Guy H. Keeton, director and scene designer.

Below: Northwestern College: Ellen Burger, Allyson Drake, Scott Lammers, Nattalee DeBoer and Ramona Mackie in *Sleeping Beauty*. Thora England, director.





University of Southwestern Louisiana:
Harvis Weekly (seated),
Glynn Romero, Vic Vead and
Ricky Lagneaux in *The Little
French Tailor*. Harold W. Poc,
director and scene designer.



Middle Tennessee State University: Eddie Puretti, Marilyn McCallie, Nancy Clendenin
and Chip Woody in *The Great Cross Country Race*. Dorethe Tucker, director.

which enabled the drama department to issue more scholarships. Local civic groups and professional organizations have contracted with cast members of *North Central College* at Naperville, Illinois, to produce three children's plays. Three fairy tales were chosen this year: "The Ghost of Mr. Penny," "Jack and the Beanstalk" and "The Dancing Donkey." An old favorite, "The Bremen Town Musicians" was produced in conjunction with the third annual children's theatre workshop at the *University of Arkansas* in Monticello which is sponsored by the arts and humanities division of the Arkansas Planning Commission. Another workshop situation and two more fairy tales at *New Mexico University*, in Las Cruces. Mrs. Gilbert, wife of the cast director, wrote and produced her version of "Cinderella" and also sponsored a creative dramatics workshop for children between the ages of 5 and 15 on Saturday mornings. The older children in that group under the direction of Sandy Foley, presented "Snow White" also written by Mrs. Gilbert. The younger ones presented (you guessed it) interpretations of fairy tales directed by Marie Emerson. *Barat College* in Lake Forest, Illinois, also produced "Cinderella" for 2,200 children in six performances.

Shirley Jackson's "The Bad Children," a reverse Hansel and Gretel story and "The Snow Queen" was toured this spring by *Mississippi State College for Women*. The report of their portable scenery is so fetching that it is quoted in its entirety in the following paragraphs.

Since we tour our spring children's production in two college station wagons, we must design our scenery accordingly. We are always looking for

new and exciting sets that will travel well and still look appealing to the children. This year we came up with an idea that is very popular right now. It was a backdrop that was designed to resemble a huge tapestry. The basic material was natural colored burlap measuring ten feet in height and twenty-two feet in width. On this were applied huge mushrooms, flowers, a gingerbread house and a hollow tree out of felt. The felt was attached with decorative stitches using contrasting colors of cotton yarns. The overall effect was that of a color storybook illustration. In front of the gingerbread house was placed a folding flat unit that resembled an entrance-way with detachable roof. The roof was covered in multi-colored felt shingles and the house was decorated with candy, cookies and marshmallows that could be removed for the children to eat. There were also huge mushroom stools with padded tops, a wishing well and a stump.

All of fairy land in two station wagons!

"The Sleeping Beauty" (Is she related to "Snow White?") was performed to 8,500 children in nine performances. The production had write-ups in the "Des Moines Register" magazine section and in professional education journals. "The Red Shoes" by Robin Short was produced by *Elizabethtown College* in Pennsylvania. This was their first try with children's theatre and the cast directed the show entirely itself, built the scenery, made the costumes and attended to all the details in addition to acting the shows.

So if you're looking for a children's play to produce and you can't find one to "buy" and you don't want to make one up, try the library. It won't take you long—after all, how far can it be from William Shakespeare to Dr. Seuss. . . !?

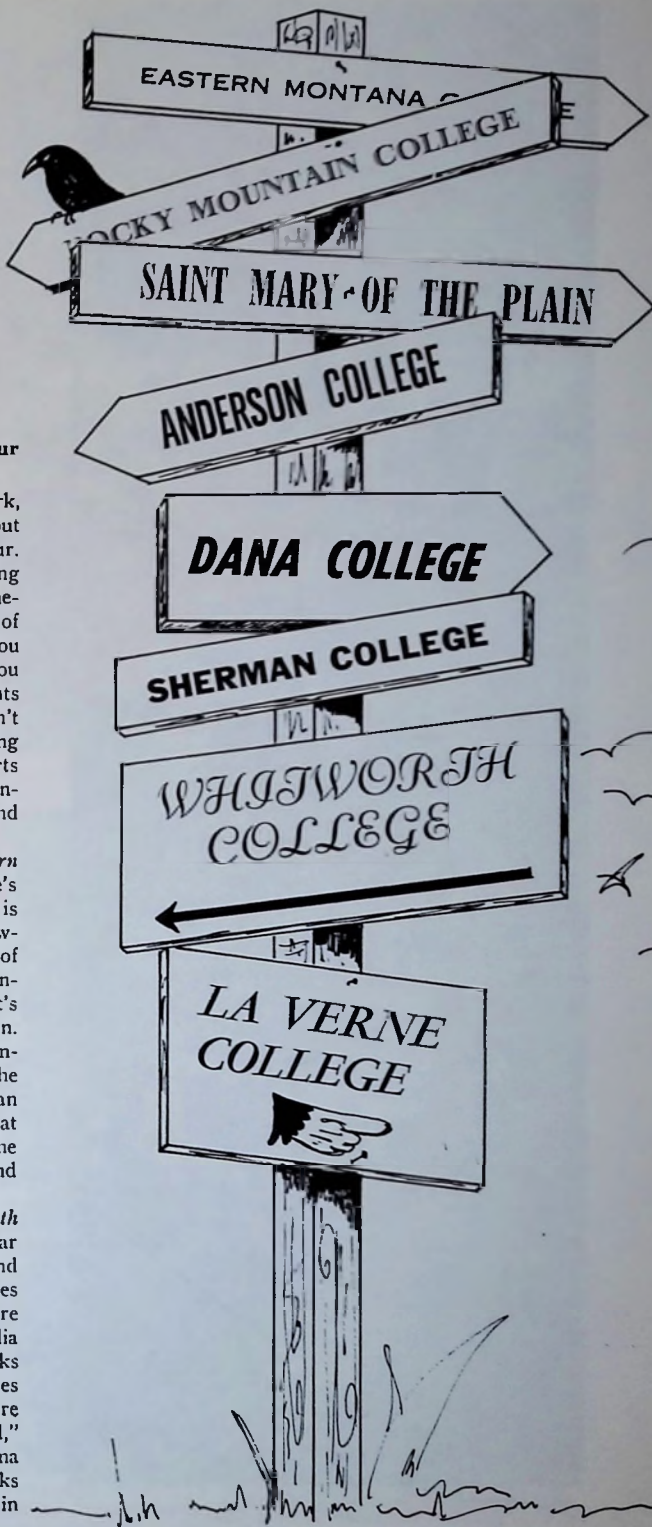
ON THE ROAD

Alpha's Psi Chapters Go on Tour

Need a change of pace? Could the play use a spark, a new impetus? Feel unappreciated? Why not get out of the "green-room-groove" and head out for a tour. Where to go? No problem; just open the drawstring on your group's special bag of tricks—in front of someone who can do the necessary public relations work, of course—and you'll be declining invitations before you can say, "Which way to the Interstate!" But if you can't go, live vicariously during the next few moments as you travel with casts from all over the country. Don't be surprised when you pull up in front of something other than a high school gym. Judging from the reports of many touring casts, you'll find the possibilities unlimited, the scenery inviting, the audiences unusual and the climate. . . .

Well, better grab a coat as we start off with *Eastern Montana College* at Billings. They took "Where's Charley" and a musical-comedy revue called "This is Life" to the Northeast Command—Greenland, Newfoundland, Iceland and Labrador under the auspices of the USO. The show also tours briefly through Montana and Wyoming. While we're still in the state, let's join up with *Montana State University* in Bozeman. The cast is the first one in the state to give a performance at a prison. After a benefit performance for the inmates at Deer Lodge prison, "A Flea in Her Ear" can be seen at several other Montana communities. And at *Rocky Mountain College*, thirty performances of "The Pigeon Roost" can be seen throughout the West and Northwest.

Continue now to Washington state where *Whitworth College* is touring the sanctuary production of Par Lagerkvist's "Let Man Live" through Washington and Oregon. After twenty-four performances in churches and schools, we'll continue south into California. Here we meet *La Verne College* and the "Glamm-Expermedia Theatre Group" who creates its own original works and tours prisons, churches, schools, and communities throughout the area. Their productions this year were called "The Man from God or Bag It," "Underground," and "The Fool." Still in California, the Church Drama group of *California Lutheran College* in Thousand Oaks tours to different churches and related conventions in the state and in Arizona.





Dana College: Jim Lippold in *The Bacchae*.
Kandy Bolton, director.



State University of New York at Geneseo:
G. Krys Powell in *The Miser*. D. Scott Glasser,
director. Linda F. Person, scene designer.

Keep your imagination in tow as we continue our armchair trip through the changing scenery of Arizona into Sherman, Texas, where we'll welcome *Sherman College* and their performance of "The World of Carl Sandburg." This play serves as a recruitment program for the college while "Becket" was toured to four churches in the state in cooperation with the Church Relations Office.

Southeastern State College in Durant, Oklahoma (are you tired after that jaunt through Texas?) will offer a refreshing change of scenery and entertainment as we join them at various libraries throughout the state. "Journey's End: An Evening with Herman Melville," and "The Divided Spirit: An Evening with Edgar Allan Poe," are the Readers' Theatre programs for the next few days.

Now we turn northward for a long stretch into the Kansas plains where Peter Shaffer's "The Private Ear" was performed for high schools, colleges and organizations. The highlight of this stop is the state meeting of the National Thespian Society where *Saint Mary of the Plains College* of Dodge City, Kansas, presents that play as part of the program.

Hello, Blair, Nebraska, home of *Dana College* where "The Bacchae" was the first theatre project of their interim. As we travel with them through Nebraska and Iowa, we can watch the entire company conduct workshops for the high school students that made up their audiences. Lighting, acting, costuming, improvisation, stagecraft, publicity, movement and make-up were topics covered in the sessions.

Just thinking about all that work can tire even a fire-side traveller. Lucky that it's a long ride down to Fayette, Missouri, where *Central Methodist College* tours their state with the Central Pantomime Theatre Company. We haven't seen mime yet on this trip but this independent organization will spend eight days shows in this medium.

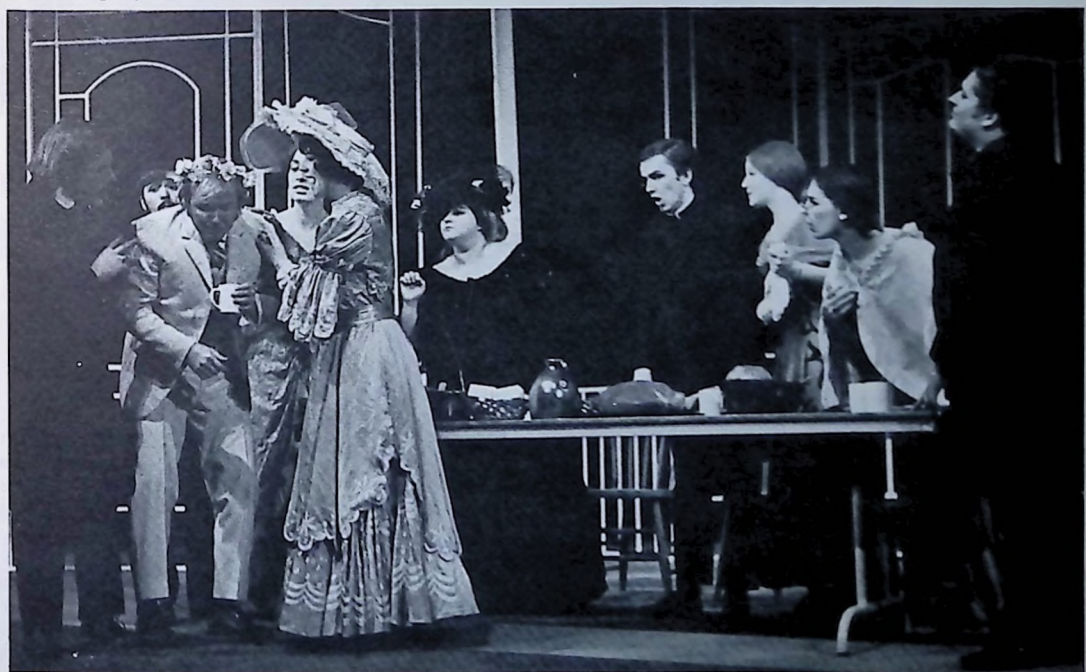
Over to Illinois, after spanning practically the entire length of the state, we'll make a brief stop in Northern Illinois at *North Central College* in Naperville where "Christ in the Concrete City," and "A Thurber Carnival" will be represented to churches and civic groups. Keep your eyes open as the bus takes a slow trip through Chicago and drives along Lake Michigan to Lake Forest, Illinois, where *Barat College* is performing "Too Good to Be True" and "The Roar of the Greasepaint . . ." at Fort Sheridan Army Base.

Time to take inventory while on the way to Indiana—libraries, churches, prisons, schools, army bases; religious drama, comedy, musicals, mime. What a variety of experiences. *Anderson College* presents "Eyes Upon the Cross" at various Church of God churches during the Easter break. More religious drama as we find ourselves in Alliance, Ohio, where *Mount Union College* toured "Infancy," a student directing project by Jan Holder and a program of popular music and readings from the religious writings of the world, entitled "Celebration."

Let's spend some time with the cast of *New York State College at Geneseo* where a Title III company (sponsored by the federal government) tours to high schools throughout the year. The company teaches in the schools for three weeks then presents the play. This year, it was Moliere's "The Miser." On to more high



*State University College of New York at Fredonia: Tom Baydala and Steve Cooper in **The Night Thoreau Spent In Jail**. Jack Cogdill, director. T. D. Janello, scene designer.*



*State University College of New York at Fredonia: Steve Markuson, Dennis Steef, Peter Zellmer, Pam Ryan, Terry Christian, Susan English, Bill Matsun, Anne Mahoney, Peggy Spencer and Bruce Miller in the Benjamin Britten Opera **Albert Herring**. Mario Alech, director. T. D. Janello, scene designer.*



*Eastern Montana College: Linda Lehman, Tim Stetzner, Rod Garritson and Elna Rieger in **Where's Charley?**
Frederick K. Miller, director.*

schools in New York and the surrounding area as we continue our travels with the *State University College at Fredonia*. They performed "The Night Thoreau Spent in Jail." Fredonia was also the first state university in New York to be invited to tour an opera—they chose "Albert Herring," which was performed at Oswego and Albany.

Note: add "Opera" to the list of things seen as we leave New York for East Orange, New Jersey, and *Upsala College*. "Barrabas" was toured by that cast to various churches in the area.

It was a long haul but we made it, all the way to West Virginia where the 15 member cast of *Bethany College* is touring high schools in Ohio, Virginia and Pennsylvania. While doing all of this geographical backtracking, we can watch "Antigone," "Tartuffe," and "A Gap in Generations." Variety is truly the spice of life—until we reach Boone, North Carolina, that is, and find *Appalachian State University* also touring "Tartuffe" throughout the central and Piedmont areas of that state.

Relax now on our way to see a classic, "The Glass

Menagerie." The *University of South Carolina* at Columbia is taking this to high schools and colleges throughout the state. And at *Limestone College* in Gaffney, we can see more of the state as the "Instant Theatre Team" travels around doing improvisational work and building "human machines," an idea that helps each group member to become aware of the other's function—or malfunction.

Turn back West to begin making the trip "home" but not until we've stopped to have dinner at the Student Union building at *Mississippi State University* in State College, where "Cactus Flower" is being presented as a dinner theatre. Then we can tour with the cast to other colleges in the state.

Nothing like ending a trip with a good meal!

If your cast has been sitting at home with a play for lack of inspiration maybe some of the "sights" presented here will give you some ideas. From what we've seen, almost any group of people are more than willing to call themselves "your audience"—all they need is an invitation!

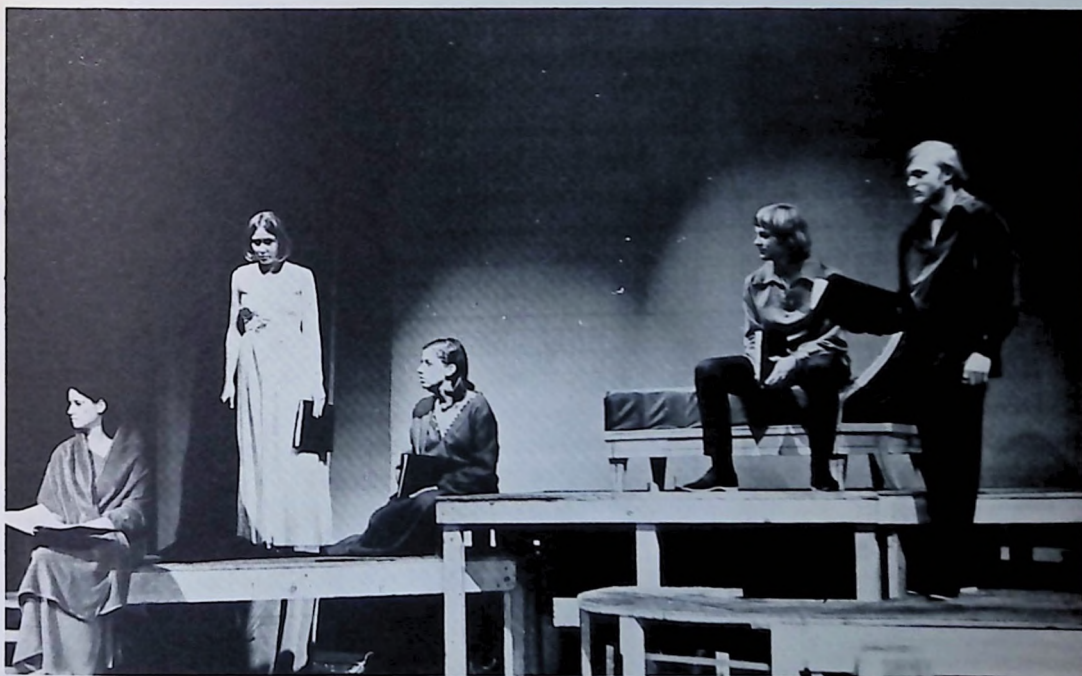
Oh yes, hope you found a way back. . . . !

READER'S

READERS' THEATRE PRODUCTIONS

Readers' Theatre continues to be popular with Alpha Psi Omega members. Nine different production from schools have been used to comment on the staging of Readers' Theatre.

There seems to be no limit to the kinds of literature used by this medium. Groups are doing plays, novels, collections of poetry and letters. They are organizing productions around any appropriate or timely theme and even basing shows on children's literature. Some writers are beginning to create special materials for Readers' Theatre.

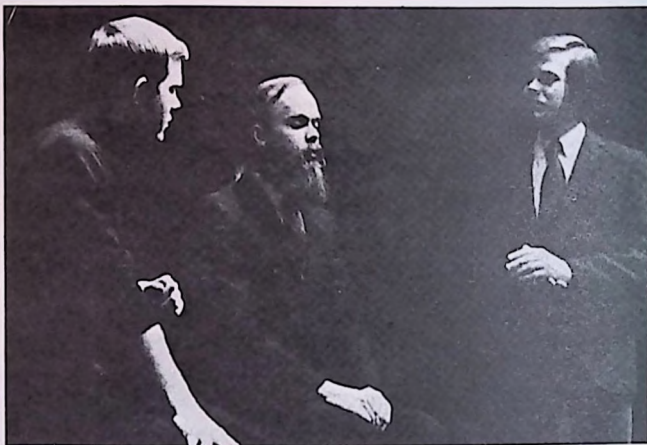


Wisconsin State University at Superior: Penny Novack, Donna Anderson, Mary Moldenhauer, Erik Sten and Ned Gegenbeck in The Odyssey: A Modern Sequel. Dr. Albert M. Katz, director. Dr. John Ford Sollers, scene designer.

*Below: Mansfield State College:
Seated: Bill Doherty, Robin Kintzer,
Richard Stone. Standing: Diane Smith.
Everything In The Garden
directed by Keith Williams.*

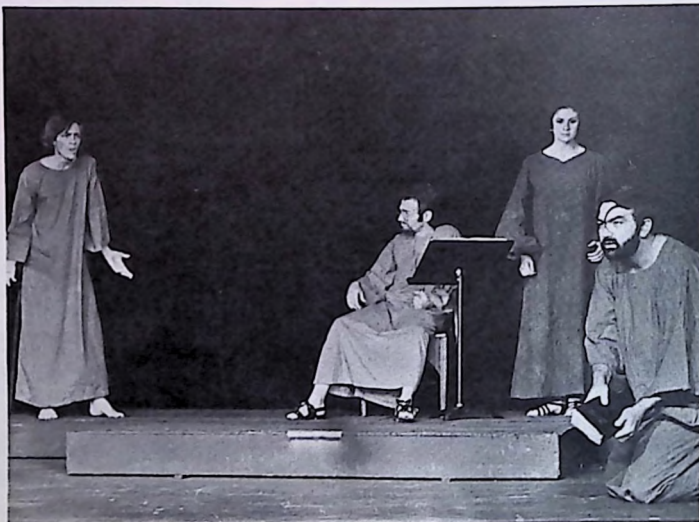


*Gannon College: Claude LeBlanc, Mike Baham, Marilyn Stanzel and Vic Vead
in Shakespeare: Just For Laughs. Arranged and directed by David Martin.*



*Eastern New Mexico University: Tap Payne, Sam Towers and Dave McCrary in
The Potting Shed. Larry M. LaGrave, director and scene designer.*

*Right: Georgia State University:
Barry Darnell, Stuart Culpepper, Pat Thigpen
and Bill Alford in Heavenly Discourse.
James E. Stigh, director and scene designer.*



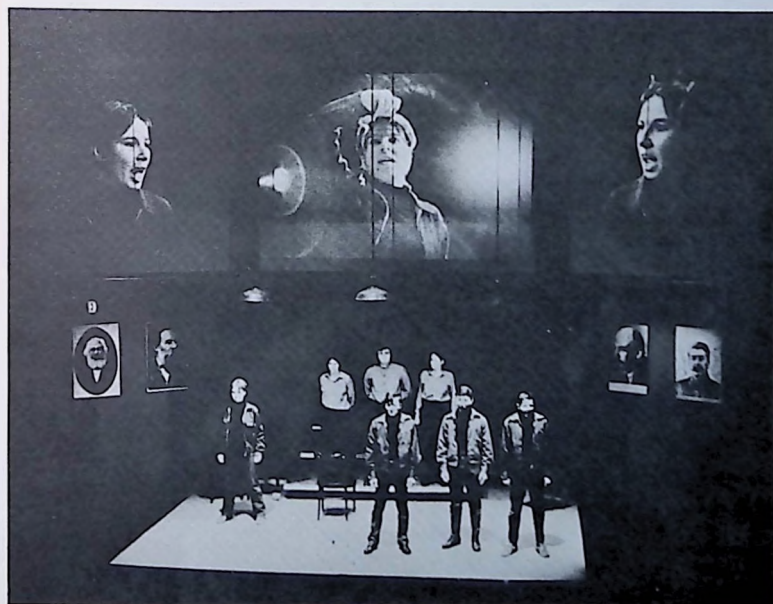


Left: Clarion State College:
Winnie The Pooh.

Below: Eastern Kentucky University:
Claudia Peyton, Merle Middleton, II,
Tina Davy, S. Bryan Stanley, Dan Browning
and Eloise Garner in **John Brown's Body**.



Above: Gannon College:
Richard Knecht, Lucy Gott,
Carleton Shea and
Rosanne Infantino in **Mother
Courage And Her Children**.
Jerry Brace, director. Wm.
David Anderson, scene designer.



Left: State University of
New York at Albany:
Mary Ticne, Peter Berlin,
John Guttman and Arnold Galin
in **The Measures Taken**.
Farka Burian, director.
R. J. Donnelly, scene designer.

Preparations are reaching a fever pitch for the 1972 Assitej (Association Internationale Du Theatre Pour Les Enfants Et La Juenesse) Congress which will be held on the Sunya Campus in June of 1972.

500 international and domestic delegates will gather for performances by the Central Children's Theatre of Moscow (USSR), the Jan Creanga Theatre of Rumania, The Young Vic of London, England and the Lalka Puppet Theatre of Poland. Several American children's theatre literature and other topics related to theatre for children will highlight the seven-day gathering.



State University of New York at Albany: Carols Guzman, Henry Kuivica, and Greg Haymes in *The Yellow Laugh*. William F. Snyder, director and designer.

State University of New York at Albany: Lisa Sarna, Carlos Guzman, and Greg Haymes in *The Yellow Laugh*. William F. Snyder, director and designer.



OUTSTANDING STUDENT PERFORMANCES

Awards for work in theatre are offered by virtually every Alpha Psi Omega member. Awards are given in dozens of categories including outstanding acting in major roles, outstanding acting in supporting roles, directing awards, lighting awards, costuming awards, awards to stage workers, and awards for being of service.

The award winners pictured here were chosen from literally hundreds which were submitted. All are for acting. They constitute a pictorial comment on the work being done by students in American educational theatre.



Texas A & I:
David Rhodes, Best Actor
in Luther.



Slippery Rock State College:
Tom Bruner, Best Actor in
The Night Thoreau
Spent In Jail.



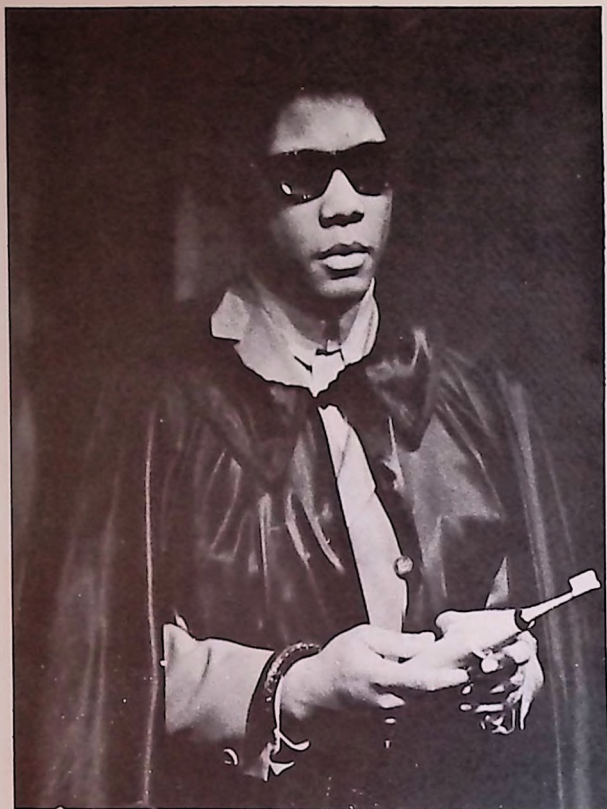
Wisconsin State University: Ned Gengenbach,
Best Actor in Becket.



Wisconsin State University:
Doug Smedbron, Best Actor;
Terry Haskins, and
Carol Rae Reineke in
Exit The King.



State University College of
New York at Fredonia:
Paul Heeki, winner of
Opera Theatre Award for
best performance in a major
role and Marjorie Pendleton
in The Medium.



*State University College
at Oswego: Theodore M.
Attles, II, Best Actor in
Slow Dance On The
Killing Ground.*

*Mississippi State College for Women:
Patsy George, Best Actress and
Keith Eilermann in **The Diary of
Anne Frank.***



*Right: University of
Dubuque: Paul Cleante,
Best Actor in **The Miser.***



*Northeast Louisiana
University: Richard Wexler,
Best Actor in **The Man
Who Came To Dinner.***





*Black Hills State College: Delilah Gutierrez,
Best Actress in Medea.*



*Clarion State College: Paul Gaffney,
Best Actor in Dark Of The Moon.*

*Right: Southern State
College: Dee Post,
Best Actress in
The Miracle Worker.*



*Below: Judson College: Carol Fix,
Best Actress in Miss Julia.*





*Rocky Mountain College: Ellen Snortland and Louis F. Edwards received awards for outstanding Achievement in Performance in **The Diary of Anne Frank**.*

*Below: Midwestern University: Toney Neighbors, Best Actor and Yvonne Jaynes, Best Actress in **Who's Afraid Of Virginia Woolfe?***



*Left: Lincoln Christian College: Jim Abegglen, Best Actor and Most Promising Newcomer and Pat Jenner, Best Actress in **The Roar Of The Greasepaint**.*



*Left: Mount Union College: Barbara Rohrer, Best Actress and Richard Bloor, Best Actor in **The Prime Of Miss Jean Brodie**.*





*Rocky Mountain College: Ellen Snortland and Louis F. Edwards received awards for outstanding Achievement in Performance in **The Diary of Anne Frank**.*

*Below: Midwestern University: Toney Neighbors, Best Actor and Yvonne Jaynes, Best Actress in **Who's Afraid Of Virginia Woolfe?***



*Left: Lincoln Christian College: Jim Abegglen, Best Actor and Most Promising Newcomer and Pat Jenner, Best Actress in **The Roar Of The Greasepaint**.*



*Left: Mount Union College: Barbara Rohrer, Best Actress and Richard Bloor, Best Actor in **The Prime Of Miss Jean Brodie**.*

ADAMS STATE COLLEGE, Mu Epsilon, Alamosa, Colorado. Major productions: *The Rainmaker*, *Ladies in Retirement*, *We Bombed in New Haven*, *Camino Real*, *The Silver Whistle*. 1970-71 Officers: Bonnie Kay Jeffries, president; Karen Bowman, vice-president; Larry McQueen, secretary-treasurer. Dale E. Jeffries, faculty director.

ARKANSAS COLLEGE, Alpha Xi, Batesville. Major productions: *The Importance of Being Earnest*, *The Pot of Gold*, *Summertime*, *The Elf's Tale*. 1970-71 Officers: William Withrow, student director; Janet Dennis, business manager; Carolyn Phillips, playwright. Carroll McKee, faculty director.

ANDERSON COLLEGE, Lambda Theta, Anderson, Indiana. Major productions: *Harvey*, *Flowers for Algernon*, *Hello, Dolly*, *You Can't Take It With You*, *Eyes Upon The Cross*, *Waiting For Godot*. 1970-71 Officers: Elsa Johnson, president; Henry Layne, vice-president; Darcy Crabtree, secretary. Robert N. Smith, faculty director.

APPALACHIAN STATE UNIVERSITY, Lambda Zeta, Boone, North Carolina. Major productions: *Tartuffe*, *Emperor's New Clothes*, *Antigone*, *A Funny Thing Happened On the Way to the Forum*. 1970-71 Officers: James R. Cox, director; Douglas Boily, business manager; Carolyn Brannon, stage manager; Tim Cherry, historian. Ed Dilkington, faculty director.

ASHLAND COLLEGE, Ohio Zeta, Ashland, Ohio. Major productions: *110 In The Shade*, *The Miser*, *Long Day's Journey Into Night*, *Bell, Book and Candle*. 1970-71 Officers: Daniel H. McElwain, director; Dale A. Miller, stage manager; Ann Freedlander, business manager. Virginia M. Jenkins, faculty director.

ATHENS COLLEGE, Mu Upsilon, Athens, Alabama. Major productions: *Everything in the Garden*, *The Boy Friend*, *The Fantasticks*. 1970-71 Officers: Jack Walczak, president; Larry Lovelady, vice-president; Mary E. Bond, secretary; Rocco D'Amelio, treasurer. Lawrence A. Saunders, faculty director.

AUSTIN COLLEGE, Nu Kappa, Sherman, Texas. Major productions: *The Winslow Boy*, *Arsenic and Old Lace*. 1970-71 Officers: Linda Hodges, president; Steve Plunkett, secretary. Paul and Bonnie Beardsley, faculty directors.



Stephen F. Austin State University: John C. Smith and Brad Stone in *A Gap In Generations*. W. K. Waters, director. J. E. Christiansen, sets and costumes.



Bloomsburg State College: Tony Kohl in *Marat/Sade*. William Acimo, director. Harry Berkhiser, scene designer.

BAKER UNIVERSITY, Theta, Baldwin, Kansas. Major productions: *The White House Murder Case*, *Our Town*. 1970-71 Officers: Make Haskin, president; Nedra Dixon, vice-president; A. C. Griffing, treasurer. Thelma Morreale, faculty director.

BARAT COLLEGE, Tau Epsilon, Lake Forest, Illinois. Major productions: *Too True to Be Good*, *Mary, Mary*, *Cinderella*, *The Roar of the Greasepaint*, *The Lion Who Wouldn't*. 1970-71 Officers: Susan Kennedy, president; Bea Toomey, vice-president; Marianne Toland, vice-president; Nancy Jo Timms, secretary-treasurer. Val Bettin, faculty director.



Stephen F. Austin State University: Bradford Kyle, William Chandler, and Tony Frank in *Caucasian Chalk Circle*. W. K. Waters, director. J. E. Christiansen, sets and costumes.

BELHAVEN COLLEGE, Iota Upsilon, Jackson, Mississippi. Major productions: *Blithe Spirit*. 1970-71 Officers: Jeff Davis, Jr., president; Diana Hemphill, vice-president. Bewey Bowden, faculty director.

BELMONT COLLEGE, Kappa Omicron, Nashville, Tennessee. Major productions: *Animal Farm*, *Li'l Abner*. 1970-71 Officers: Michael Padgett, president; Claude Deery Haynes, vice-president; Mike Loffi, business manager. Miriam Robinson, faculty director.

BEREA COLLEGE, Alpha Iota, Berea, Kentucky. Major productions: *Bell, Book and Candle*, *Iphigenia In Aulis*, *The Taming of the Shrew*. 1970-71 Officers: Mike Wilson, director; Sharon Osolurk, business manager; Glen Miracle, stage manager. Paul N. Power, faculty director.

BERRY COLLEGE, Kappa Alpha, Mount Berry, Georgia. Major productions: *Black Comedy*, *Once Upon A Mattress*, *The Night Thoreau Spent in Jail*. 1970-71 Officers: Dennis Krieder, president; Shari Gresham, vice-president; Frank Mundy, treasurer; Mike Tuminell, secretary. Mike PeDretti, faculty director.

BETHANY COLLEGE, Beta Gamma, Bethany, West Virginia. Major productions: *She Stoops to Conquer*, *Who's Afraid of Virginia Woolfe*, *Tartuffe*, *Marat/Sade*, *Oedipus Rex*, *Gondoliers*. 1970-71 Officers: Jeffrey Thresher, president; Susan Rostad, vice-president and secretary-treasurer. Herbert L. Drinnon, faculty director.

BETHANY COLLEGE, Zeta Zeta, Lindsborg, Kansas. Major productions: *Endgame*, *Rumpelstiltskin*. 1970-71 Officers: Jay Scott Emler, president; Kay Cox, vice-president; Eleanor Jaderborg, secretary; Tim Stergios, treasurer. Robert L. Richey, faculty director.



Black Hills State College: Mike Gross, Roger Iwan, Linda Morgen, and Bruce Williams in Becket. Darrell Woolwine, director. James Burroughs, scene designer.

BLACK HILLS STATE COLLEGE, Rho Delta, Spearfish, South Dakota. Major productions: *Becket*, *Don't Drink the Water*, *The Emperor's New Clothes*, *Halfway Up the Tree*, *Medea*, *Plaza Suite*, *Who's Afraid of Virginia Woolfe*. 1970-71 Officers: Bruce Williams, president; Hoodie Smock, vice-president; Kathy Williams, secretary; Jan Knispel, treasurer. Darrell Woolwine, faculty director.

BLOOMSBURG STATE COLLEGE, Alpha Omicron, Bloomsburg, Pennsylvania. Major productions: *The Little Foxes*, *Hamlet*, *Marat/Sade*, *Summertime*, *Man of La Mancha*, *The Time of Your Life*. 1970-71 Officers: Sam Zachary, president; Velma Avery, vice-president; Carol Schmidt, secretary-treasurer; Amy Raber, historian. Michael J. McHale, faculty director.

BRIDGEWATER COLLEGE, Eta Upsilon, Bridgewater, Virginia. Major productions: *Bus Stop*, *Look Homeward Angel*. 1970-71 Officers: Donna Wine, president; Marilyn Wampler, secretary. C. F. Fuller, Jr., faculty director.



Buena Vista College: Flip Mettling, Mike Mamminga, Lydia Moore, Al Semak, and Jim Hartman in Look Homeward Angel. Travis P. Lockhart, director. Jay Friedman, scene designer.

BUENA VISTA COLLEGE, Chi, Storm Lake, Iowa. Major productions: *Look Homeward Angel*, *Mame*, *As You Like It*. 1970-71 Officers: Jay Friedman, president; Debra Ball, secretary. Travis P. Lockhart, faculty director.

CALIFORNIA LUTHERAN COLLEGE, Sigma Rho, Thousand Oaks. Major productions: *The Lion in Winter*, *Camelot*, *All The Way Home*, *Our American Cousin*, *Changing Times of King Cornelius*. 1970-71 Officers: Mark Eichman, cast director; Penny Keuser, business manager; Dan Cross, stage manager. Richard Adams, faculty director.

CALIFORNIA STATE POLYTECHNIC COLLEGE, Delta Pi, San Luis Obispo. Major productions: *Rosencrantz and Guildenstern Are Dead*, *Who's Afraid of Virginia Woolfe*, *America*, *Hurrah*, *Charley's Aunt*, *The Birds*. 1970-71 Officers: Ed Pinson, president; Bruce Wilkinson, vice-president; Winifred Robbins, secretary; Barbara Harris, treasurer. Robin Lake, faculty director.

CARROLL COLLEGE, Nu Tau, Waukesha, Wisconsin. Major productions: *Exit The King*, *Indiana*, *The Knack*, *A Funny Thing Happened on the Way to the Forum*. 1970-71 Officers: Thomas W. Yemm, president; Colin Williams, secretary-treasurer. Dorothy Steinmetz, faculty director.



California State Polytechnic College: Who's Afraid of Virginia Woolfe? directed by Edwin Pinson. Edwin Pinson was also scene designer.

CARSON-NEWMAN COLLEGE, Eta Beta, Jefferson City, Tennessee. Major productions: *Summertime*, *My Three Angels*, *The Crucible*, *All My Sons*, *Finian's Rainbow*, *The King and I*. 1970-71 Officers: Ed Force, president; Ken Brunson, vice-president; Ed Turney, secretary-treasurer; Nancy Johnston, historian. Newton Neely, faculty director.

CARTHAGE COLLEGE, Eta Omicron, Kenosha, Wisconsin. Major productions: *George Washington Slept Here*, *Romeo and Juliet*, *The World of Carl Sandburg*, *Guys and Dolls*. 1970-71 Officers: Arnold Thode, president; Frank Maxwell, vice-president; Bruce Steinway, treasurer; Margaret Schmidt, secretary; Gary Voss, pledgemaster. T. Shandy Holland, faculty director.

CEDAR CREST COLLEGE, Iota Gamma, Allentown, Pennsylvania. Major productions: *The Beggar's Opera*, *Right You Are*, *Women of Troy*. 1970-71 Officers: Suzy Appleton, president; Kate de Angeli, secretary-treasurer. Marianna Loosemore, faculty director.

CENTRAL COLLEGE, Alpha Zeta, Pella, Iowa. Major productions: *Tartuffe*, *J.B.*, *Hello Dolly*. 1970-71 Officers: Rani Vande Berg, president; Linda M. Garrison, vice-president; Roger Johnson, secretary-treasurer. John Torrents, faculty director.



Appalachian State University, Lambda Zeta. *A Funny Thing Happened On The Way To The Forum*. Jim Cox, Richard Chisenhall. Charles Martin, director.

CENTRAL METHODIST COLLEGE, Zeta Lambda, Fayette, Missouri. Major productions: *The Haunting of Hill House*, *See How They Run*. 1970-71 Officers: Sara A. Walkup, cast director; Robin Armbruster, stage manager; Terree Rowbottom, business manager; William R. Newby, prompter. William H. Moore, faculty director.

CHAMINADE COLLEGE, Eta Epsilon, Honolulu, Hawaii. Major productions: *The Glass Menagerie*, *Private Lives*. 1970-71 Officers: Andrea Anderson, president; Eugenia Tseu, vice-president; Donald Ranney, secretary; Karen Anderson, treasurer. William F. Croarkin, faculty director.



Carroll College: Donald Carpioux in *Indians*. Dorothy Sainsbury-Steinmetz, director.



Cedar Crest College: Louise Taylor, Doug Simes, and Janet Sanner in *The Beggars Opera*. Marianna Loosemore, Director. James C. Smith, scene designer.

CLARION STATE COLLEGE, Alpha Upsilon, Clarion, Pennsylvania. Major productions: *Dark of the Moon*, *Marriage of Figaro*, *The Madwoman of Chaillot*, *South Pacific*. 1970-71 Officers: Paul Gaffney, director-president; Robert Sykes, vice-president; Joanne Long, secretary; Jetta Gilligan, treasurer; Sam Busco, student coordinator. Bob Copeland, faculty director.

C. W. POST COLLEGE, Iota Eta, Greenvale, New York. Major productions: *Othello*, *Biederman and the Firebugs*, *Canterbury Tales*, *The Great Divide*. 1970-71 Officers: Blaine Brown, president; Fran Luman, secretary; Harold Machiz, treasurer. V. J. Lee, faculty director.

DANA COLLEGE, Sigma Iota, Blair, Nebraska. Major productions: *Miss Julie*, *The Christmas Party*, *America Hurrah*, *The Bacchae*, *The Emperor's Nightingale*. 1970-71 Officers: Robert Blair, president; Debbie Bellows, secretary; John Linetel, treasurer. Randy Bolton, faculty director.

DAVID LIPSCOMB COLLEGE, Pi Kappa, Nashville, Tennessee. Major productions: *Death of a Salesman*, *Arsenic and Old Lace*. Jerry Henderson, faculty director.

DAVIDSON COLLEGE, Iota Kappa, Davidson, North Carolina. Major productions: *The Alchemist, A Case of Libel, Charley's Aunt.* Robert T. Barber, Jr., faculty director.

DOANE COLLEGE, Delta Omicron, Crete, Nebraska. Major productions: *You Know I Can't Hear You When The Water's Running, Summertime, The Lady's Not For Burning, H.M.S. Pinafore.* 1970-71 Officers: Annie Ruocco, president; Brian Horst, vice-president; Kathy Daniel, secretary-treasurer. Walter Barry, faculty director.

DOUGLAS COLLEGE OF RUTGERS UNIVERSITY, Beta Epsilon, New Brunswick, New Jersey. Major productions: *Fuente Ovejuna.* 1970-71 Officers: Lee Williams, cast director; Herb McGrath, stage manager; Susan Smith, business manager.

DUQUESNE UNIVERSITY, Mu Omega, Pittsburgh, Pennsylvania. Major productions: *Tiger at the Gates, Brecht on Brecht.* 1970-71 Officers: Kevin Parent, president; Tracy Abood, vice-president; Mary Ann Goodnow, secretary; Ken Kunkel, business manager. Samuel S. Meli, faculty director.

EAST CENTRAL STATE COLLEGE, Beta Zeta, Ada, Oklahoma. Major productions: *Mary, Mary, Madwoman of Chailot, Summer and Smoke.* 1970-71 Officers: Brenda Duffield, president; Larry Wall, vice-president; Myra Spurgin, secretary-treasurer. Dorothy Summers and David Schallhorn, faculty directors.

EASTERN KENTUCKY UNIVERSITY, Zeta Phi, Richmond. Major productions: *Dracula, You Can't Take It With You, John Brown's Body, The Boyfriend, The Brave Little Tailor.* 1970-71 Officers: Harold McCay, president; Toni Trimble, vice-president; Kathryn Paris, secretary-treasurer; Keith Johnson, student council representative. Haller T. Laughlin, faculty director.

EASTERN MONTANA COLLEGE, Eta Lambda, Billings. Major productions: *Mother Courage and Her Children, Where's Charley, Life with Father, Don't Drink the Water, Oklahoma.* 1970-71 Officers: Robert Timberman, president; Tom Kilbourne, vice-president; Jean McIntyre, secretary. Frederick K. Miller, faculty director.



Davidson College: *Charley's Aunt* directed by Rupert T. Barber, Jr. Charles Hodge, scene designer. Carol Barber, costumer.

EASTERN NEW MEXICO UNIVERSITY, Kappa Upsilon, Portales. Major productions: *Dark of the Moon, The Fantasticks, Cactus Flower, Philadelphia, Here I Come.* 1970-71 Officers: Jim Robertson, president; Ron Bingham, vice-president; Delana Phillips, business manager. R. Lyle Hagan, faculty director.

EASTERN OREGON COLLEGE, Theta Chi, LaGrande. Major productions: *Blithe Spirit, On A Clear Day, The Firebugs.* Richard G. Hiatt, faculty director.

EAST STROUDSBURG STATE COLLEGE, Iota Omicron, East Stroudsburg, Pennsylvania. Major productions: *Who's Afraid of Virginia Woolfe, A Company of Wayward Saints.* 1970-71 Officers: Barry Smock, president; Gary Schiavonne, vice-president; Rita Plotnicki, treasurer. Joseph Brennan, faculty director.



East Stroudsburg State College: David Sweta in *A Company Of Wayward Saints.*



East Stroudsburg State College: Jane Fenstermacher and Ed Leisour in *A Company Of Wayward Saints.*



Eastern Kentucky University: Frederick DeJaco, Merle Middleton, II, Tony Mannen, and Harold McKay in *Dracula*.

ELIZABETHTOWN COLLEGE, Sigma Phi, Elizabethtown, Pennsylvania. Major productions: *The Red Shoes*. 1970-71 Officers: Frances L. Whalen, president; Jane O'Hara, vice-president-treasurer; Susan Trofatter, secretary; Delbert Kaegel, historian-alumni secretary. Donald E. Smith, faculty director.

ELON COLLEGE, Lambda Omicron, Elon College, North Carolina. Major productions: *The Hostage, As You Like It, Look Back in Anger*. 1970-71 Officers: Clenda Condon, president; Dale Kaufman, vice-president; William Shaver, treasurer. Sandy Moffett, faculty director.

EMMANUEL COLLEGE, Lambda Tau, Boston, Massachusetts. Major productions: *Yes and No, Guest In The House*. 1970-71 Officers: Cassandra Haggerty, president; Susan Richard, vice-president; Susan Stanton, secretary; Mary Beth Stephanet, treasurer. Eloise Kadesch, faculty director.

FAIRMONT STATE COLLEGE, Alpha, Fairmont, West Virginia. Major productions: *Taming of the Shrew, Desire Under the Elms, Brigadoon, The Innocents*. 1970-71 Officers: Lloyd A. Arnett, president; Michael Genevie, vice-president; Judi Summers, secretary; Phil M. Williams, pledge master. Daniel K. Weber, faculty director.

FINDLAY COLLEGE, Nu Nu, Findlay, Ohio. Major productions: *The Male Animal, The Brick and the Rose, And You Never Know, The Case of the Missing Handshake*. 1970-71 Officers: Craig Johnson, president; Judi Biehl, vice-president; Nancy Wittenmyer, secretary-treasurer. Mrs. C. W. Sharninghouse, faculty director.



Fairmont State College: Marilyn Iams and Kemper Lengel in *The Innocents*. Jo Ann Lough, director. Daniel K. Weber, scene designer and lighting. Mona Brooks, costume designer.



Fairmont State College: Marilyn Iams, Rochelle Villar, and Mary Kay Hervey in *The Innocents*. Jo Ann Lough, director. Daniel K. Weber, scene design and lighting. Mona Brooks, costume designer.



Fort Hays State College: *The Boys In The Band* directed by Donna Leusler.

FORT HAYS KANSAS STATE COLLEGE, Lambda Xi, Hays. Major productions: *The Second Man, The House of Bernarda Alba, As You Like It, The Rainmaker, The Tender Land, The Boys in the Band*. 1970-71 Officers: Vicki P. McConnell, Steve Winkler, Denny Dey, Pam Dreiling. Lloyd Anton Frerer, faculty director.

GANNON COLLEGE, Kappa Beta, Erie, Pennsylvania. Major productions: *Marathon 33, Dracula, Canterbury Tales, Mother Courage and Her Children*. 1970-71 Officers: Joseph Mosier, president; Carleton Shea, vice-president; David Anderson, secretary-treasurer. Shirley Levin, faculty director.

GEORGE PEABODY COLLEGE FOR TEACHERS, Beta Alpha, Nashville, Tennessee. Major productions: *Beyond the Fringe, The Women, See How Thy Run*. 1970-71 Officers: Shelly Calloway, president; Rosemary Black, vice-president; Paul Goldbert, treasurer. Willard C. Booth, faculty director.

GEORGIA SOUTHWESTERN COLLEGE, Alpha Nu, Americus. Major productions: *Craig's Wife*, *Hay Fever*, *Rosencrantz & Guildenstern Are Dead*. 1970-71 Officers: Earline Cooke, president; Helen Booth, stage manager; Jerry Anthony, business manager. John Gore, faculty director.

GEORGIA STATE UNIVERSITY, Gamma Nu, Atlanta. Major productions: *A Thousand Clowns*, *Lion In Winter*, *Who's Afraid of Virginia Woolf*. James E. Sligh, faculty director.

GLENVILLE STATE COLLEGE, Theta Alpha, Glenville, West Virginia. Major productions: *A View From The Bridge*, *The Importance of Being Earnest*. 1970-71 Officers: Julia Murin, cast director. Judy Curtis, faculty director.

HARDIN-SIMMONS UNIVERSITY, Zeta Theta, Abilene, Texas. Major productions: *Mother Courage and Her Children*, *Rosencrantz and Guildenstern Are Dead*, *The House of Bernarda Alba*, *Our Town*. 1970-71 Officers: Clay Freeman, director; Sandy Vincent, stage manager; Sandra Rosengrants, business manager; Claranne Kendrick, playwright. George W. Sorensen, faculty director.

HASTINGS COLLEGE, Theta Psi, Hastings, Nebraska. Major productions: *You Can't Take It With You*, *Waiting For Godot*, *The Country Wife*. 1970-71 Officers: Thomas Wiig, president; John Reimers, vice-president; Kenneth Yount, secretary-treasurer. H. C. Shiffer, faculty director.

HOOD COLLEGE, Theta Eta, Frederick, Maryland. Major productions: *Picnic*, *Sandbox*, *Blithe Spirit*. 1970-71 Officers: Barb Rechsteven, president; Sue Holaday, secretary; Kathy Nixdoff, treasurer. Dennis Hoghes, faculty director.

IDAHO STATE UNIVERSITY, Kappa Tau, Pocatello. Major productions: *Dirty Work at the Crossroads*, *Troilus & Cressida*, *Back to the Salt Mine*, *Rashomon*, *Hay Fever*. 1970-71 Officers: Allen Grunerud, president; Sherrie Hedges, vice-president; Bob Thomas, secretary; Cindy Wohlenhaus, treasurer; Michele Shuler, historian. A. P. Blomquist, faculty director.



Jacksonville University: Greg Martin in *Krapp's Last Tape*. Lynn Bateman, director.



Iowa Wesleyan College: Dale Winters and Nancy Gerstandt in *The Misanthrope*. David M. Ferrell, director. David N. Rabedaux, scene designer.

INDIANA UNIVERSITY OF PENNSYLVANIA, Nu Omicron, Indiana. Major productions: *Odd Couple*, *Prime of Miss Jean Brodie*, *Cactus Flower*, *Middle of the Night*, *Your Own Thing*, *Love Rides the Rails*, *The Learned Ladies*, *Noah*, *Hello, Dolly*. 1970-71 Officers: Niki Roumm, president; Jerome R. McMahon, secretary-treasurer. Robert W. Ensley, faculty director.

IOWA WESLEYAN COLLEGE, Omega, Mount Pleasant. Major productions: *The Firebugs*, *The Misanthrope*. David M. Ferrell, faculty director.

JACKSONVILLE UNIVERSITY, Phi Iota, Jacksonville, Florida. Major productions: *The Insect Comedy*, *Rosencrantz and Guildenstern Are Dead*. 1970-71 Officers: Robert C. Walker, president; Nicolo Ciccarello, vice-president; Shirley Lightbody, secretary; Stephanie Massey, treasurer. Eugene Jacobsen, faculty director.

JUDSON COLLEGE, Delta Omega, Marion, Alabama. Major productions: *Miss Julie*, *An Evening With Shakespeare's Women*, *Hansel and Gretel*. 1970-71 Officers: Libby Childs, president; Joy Buzemore, vice-president; Dorothy Urchal, secretary. Charles Hannum, faculty director.

KEENE STATE COLLEGE, Lambda Beta, Keene, New Hampshire. Major productions: *A Taste of Honey*, *Don't Drink the Water*, *America Hurrah*, *The Boys in The Band*. 1970-71 Officers: Mark Tullgren, president; John Rice, vice-president; Wendy Carleton, treasurer; Anne Marie Chaput, secretary. E. T. Guidotti, faculty director.

KEUKA COLLEGE, Beta Omega, Keuka Park, New York. Major productions: *Chamber Music*, *Everyman*, *Something Unspoken*, *Talk to Me Like the Rain*, *This Property is Condemned*. 1970-71 Officers: Kay Rasmussen, cast director; Dusti Rhoades, cast business manager. Wendy Rouder, faculty director.

LA VERNE COLLEGE, Zeta Xi, La Verne, California. Major productions: *Midsummer Night's Dream*, *Thieves' Carnival*, *David and Lisa*, *Blithe Spirit*. 1970-71 Officers: Mark Wagner, president; Kevin Krause, vice-president; Karen McCray, secretary; Sylvia Deines, treasurer. Linda de Vries, faculty director.

LEBANON VALLEY COLLEGE, Rho Eta, Annville, Pennsylvania. Major productions: *Lion in Winter*, *Ruddigore*, *Cabaret*. 1970-71 Officers: Gary Weber, Bob Mains, Joanne Sockle. Anna Faber, faculty director.

LEWIS & CLARK COLLEGE, Kappa Chi, Portland, Oregon. Major productions: *Dylan*, *Lysistrata*, *Dark at the Top of the Stairs*, *The Sea Gull*. 1970-71 Officers: Lee Harris, president; Monte Merrick, vice-president; Balynda Byland, secretary. Leon Pike, faculty director.



La Verne College: Thieves' Carnival directed and designed by Linda de Vries.



Lincoln Christian College: Dale McGilliard and Debbie Thrasher in A Company Of Wayward Saints. K. David Hargrove, director. Mike Harbin, scene designer.



Keene State College: America Hurrah designed and directed by E. T. Guidotti.

LIMESTONE COLLEGE, Tau Psi, Gaffney, South Carolina. Major productions: *Cactus Flower*, *Wait Until Dark*, *Fantasticks*, *Don't Drink the Water*. 1970-71 Officers: Caroline Evans, cast director; Ann Z. McConnell, cast stage manager; Weesie Pennell, cast business manager. Mr. and Mrs. Laurens Moore, faculty directors.



Jacksonville University: Wayne Dilts, Robert Levitt, and William Kroner in Rosencrantz and Guildenstern Are Dead.

LINCOLN MEMORIAL UNIVERSITY, Rho, Harrogate, Tennessee. Major productions: *The Man Who Married the Dumb Wife*, *Outward Bound*, *Act Without Words*, *She Stoops to Conquer*. 1970-71 Officers: Eric Jamborsky, director; Jeannette Moore, stage manager; Jeannie Raggatt, business manager. Donald Loughrie, faculty director.

LOUISIANA STATE UNIVERSITY IN NEW ORLEANS, Sigma Lambda, New Orleans. Major productions: *Who's Happy Now*, *A Visit With Dr. Seuss*, *All The King's Men*, *Second Annual Louisiana Student Film Festival*, *Captain Jinks of the Horse Marines*, *Cinema Showcase*. 1970-71 Officers: Alice LeBlanc, president; Karen Arnold, vice-president; John Oertling, secretary. James Ragland, faculty director.

LYNCHBURG COLLEGE, Epsilon, Lynchburg, Virginia. Major productions: *Ethan Frome*, *Harvey*, *The Imaginary Invalid*, *A Funny Thing Happened on the Way to the Forum*. 1970-71 Officers: Denise Magee, president; Gilbert Hanke, vice-president; Diane Hylton, secretary; Gregg Simpson, secretary. Robert C. Hailey, faculty director.



Keene State College: Cheryl Downing, Joseph Whitten, John Barry, Anne Marie Chaput, and Robert Ransom in *A Taste Of Honey*. Designed and directed by E. T. Guidotti.

MANSFIELD STATE COLLEGE, Lambda Upsilon, Mansfield, Pennsylvania. Major productions: *Stop the World—I Want To Get Off*, *Twelfth Night*, *Brigadoon*, *Wait Until Dark*. 1970-71 Officers: Bonni Mowers, president; Bill Doherty, vice-president; Debby Demar, recording secretary; Keith Williams and Carol Myfelt, corresponding secretaries; Diane Smith and Lou Pratti, treasurers; Jeanette Plubell, historian. R. Guy Miller, faculty director.

MARIETTA COLLEGE, Eta Alpha, Marietta, Ohio. Major productions: *Anna Sophie Hedvig*, *Tartuffe*, *The Birds*, *Aeschylus' Fables*. 1970-71 Officers: Sara Clark, cast director; John Held, stage manager; Wesley Blauss, business manager. Willard J. Friederich, faculty director.

MASQUERS-SAMFORD UNIVERSITY, Tau Lambda, Birmingham, Alabama. Major production: *The Glass Menagerie*. Harold Hunt, faculty director.

McKENDREE COLLEGE, Alpha Theta, Lebanon, Illinois. Major productions: *The Curse of an Aching Heart*, *You Can't Take It With You*. 1970-71 Officers: Mel Roberts, president; Sarah Wolfe, secretary-treasurer. Thomlison, Welch, and Schanz, faculty directors.

MERCY COLLEGE OF DETROIT, Pi Sigma, Detroit, Michigan. Major productions: *America*, *Hurrah*, *A Funny Thing Happened On The Way to the Forum*, *As You Like It*. 1970-71 Officers: Timothy Jenkins, president; Lynnette Dagutis, vice-president; Felicia Nowak, secretary; Louise Smerecki, treasurer. James P. Foote, faculty director.

MERCYHURST COLLEGE, Iota Zeta, Erie, Pennsylvania. Major productions: *Man of La Mancha*, *America Dream*, *The Heiress*, *Fiddler on the Roof*, *A View From the Bridge*. 1970-71 Officers: Dennis Andres, president; Marie Oliveri, vice-president; Kathy Guion, secretary-treasurer. Mary Jude Yablonsky, faculty director.

MIDDLE TENNESSEE STATE UNIVERSITY, Lambda Gamma, Murfreesboro. Major productions: *The Crucible*, *Great Cross Country Race*, *The Lion in Winter*, *Dirty Work at the Crossroads*, *Dinny and the Witches*, *The Time of Your Life*, *The Little Foxes*. 1970-71 Officers: Slobodan Radojevic, director; Ron Martin, stage manager; Jimmy Wauford, business manager. Dorethe Tucker, faculty director.

MIDWESTERN UNIVERSITY, Pi Delta, Wichita Falls, Texas. Major productions: *Who's Afraid of Virginia Woolfe*, *Exit the King*, *The Imaginary Invalid*, *Waiting for Godot*. 1970-71 Officers: Terry Roberts, president; Sandy Hamilton, vice-president; Patricia Higgins, secretary; Ben Price, social chairman. Jennie Louise Hindman, faculty director.

MISSISSIPPI STATE COLLEGE FOR WOMEN, Delta Psi, Columbus. Major productions: *Mame*, *The Diary of Anne Frank*. 1970-71 Officers: Meg Montgomery, director; Marty Crabtree, stage manager; Nell Farris, business manager. Guy H. Keeton, faculty director.

MISSISSIPPI STATE UNIVERSITY, Eta Pi, State College. Major productions: *The House of Bernarda Alba*, *Cactus Flower*. Dominic J. Cunetto, faculty director.

MISSOURI SOUTHERN COLLEGE, Upsilon Omicron, Joplin. Major productions: *Missouri Legend*, *Robin Hood*, *Cherry Orchard*, *Rumpelstiltskin*, *The Killer*, *Tartuffe*. Duane Hunt, faculty director.



Louisiana State University in New Orleans: Barbara Anderson and Glen White in *The Bride Wore Rice in Her Hair*. James M. Ragland, director. Mary Bivona, scene designer.



Lynchburg College: Debbie Baker, Richard Coorsh, James Myers, and Denise Mayee in *Ethan Frome*.

MONMOUTH COLLEGE, Rho Rho, West Long Branch, New Jersey. Major productions: *Summer and Smoke*, *Awakening*, *Dylan*, *Summertime*. 1970-71 Officers: Amy Housell, production manager; Mimi Piombino, stage manager; Mike Castania, business manager. Lauren K. Woods, faculty director.

MONTANA STATE UNIVERSITY, Gamma Omega, Bozeman. Major productions: *Macbeth*, *The Night Thoreau Spent in Jail*, *Man of La Mancha*, *A Flea in Her Ear*. 1970-71 Officers: Jerry Smith, president; David Sederholm, vice-president; Rhonda Smith, secretary-treasurer; Penny Oliver, corresponding secretary. Bruce C. Jacobsen, faculty director.



Mercy College: Leo Compliment and Timothy Jenkins in *A Funny Thing Happened On The Way To The Forum*. Albert Zolton, director. William Harper, scenic designer.

MORAVIAN COLLEGE, Iota Theta, Bethlehem, Pennsylvania. Major productions: *Hippolytus*, *The Country Wife*. 1970-71 Officers: Brad S. Lutz, president; Brian Dale, vice-president; Fran Kern, secretary; Sandra Browning, treasurer. Jack R. Ramsey, faculty director.

MORGAN STATE COLLEGE, Nu Phi, Baltimore, Maryland. Major productions: *Exit The King*, *Dutchman*, *The Warning: A Theme for Linda*. 1970-71 Officers: Terry V. Ayers, cast president; Pamela Johnson, vice-president; Tyrone Holmes, business manager. Arthur C. Lamb, faculty director.



Marietta College: *The Birds* directed by W. J. Friederich. R. L. Loreman, scenic designer.

MOUNT MARY COLLEGE, Pi Beta, Milwaukee, Wisconsin. Major productions: *Heidi*, *Pygmalion*, *Blithe Spirit*. 1970-71 Officers: Kathleen Lemminger, Dorothy Zauner. S. Lister, faculty director.

MOUNT UNION COLLEGE, Alpha Tau, Alliance, Ohio. Major productions: *Peer Gynt*, *The Prince of Miss Jean Brodie*, *Decline and Fall of Practically Everybody*, *Swan White*. 1970-71 Officers: Barbara Rohrer, president. James B. Vincent, faculty director.

MURRAY STATE UNIVERSITY, Gamma Epsilon, Murray, Kentucky. Major productions: *Ring Round the Moon*, *The Crucible*. 1970-71 Officers: Andrea Kemper, president; Kathy Roberts, vice-president; Christy Lowery, business manager. Robert E. Johnson, faculty director.



Marquette University: Lauri Sharbough in *Uncle Vanya*. Gladys Vaughan, director. Thomas Gannon, scene designer.



Marquette University: Perry Crawford in *The Appletree*. Leo M. Jones, director. Thomas Gannon, scene designer.

NATIONAL COLLEGE OF EDUCATION, Mu Sigma, Evanston, Illinois. Major productions: *The Imaginary Invalid*, *Once Upon A Mattress*, *The Crucible*. Richard Bagg, faculty director.

NEW MEXICO STATE UNIVERSITY, Mu Delta, Las Cruces. Major productions: *Rosencrantz and Guildenstern Are Dead*, *Beauty and the Beast*, *Fiddler on the Roof*, *Slow Dance on the Killing Ground*. 1970-71 Officers: Charles Lewis, president; Herb Hall, vice-president; Linda Lynch, secretary-treasurer; Monte Wright, pledge master. James Gilbert, faculty director.

NEW YORK STATE COLLEGE AT GENESEO, Zeta Nu, Geneseo. Major productions: *The Miser*. 1970-71 Officers: D. Scott Glasser, president; Linda F. Person, vice-president; Marilyn A. Kollar, secretary; Robert Ossont, treasurer. Bruce Klee, faculty director.



Marquette University: George Quensel in *Uncle Vanya*. Gladys Vaughan, director. Thomas Gannon, scene designer.



Maricetta College: Anna Sophie Hedvig directed by R. L. Loreman. Scene designer, R. L. Loreman.

NEW YORK UNIVERSITY, Beta Delta, New York City. Major productions: *Dracula*, *The Tinnalary Bird*, *Women at the Tomb*, *Celebration*, *Good News*. 1970-71 Officers: Morris R. Brown, president; Robert Stonebridge, vice-president; George Shail, secretary; A. Martin Diehl, treasurer; David G. Guthrie, guard. Paul Lion, faculty director.

NORTH CENTRAL COLLEGE, Delta Epsilon, Naperville, Illinois. Major productions: *Ladies In Retirement*, *Henry IV, part I*, *The Birthday Party*, *Once Upon A Mattress*, *Mother Courage and Her Children*. 1970-71 Officers: R. Hudson Hickman, president; Robert J. Blink, vice-president; Linda Quantock, secretary; Marianne Hossa, treasurer. Richard Obermeyer, faculty director.



Middle Tennessee State University: Tommy Gray, Lane Davies, Connie O'Connell, and Morgan Abernathy in *The Crucible*. Mrs. Dorethe Tucker, director. Mr. Clayton Hayes, scene designer.

NORTHEAST LOUISIANA UNIVERSITY, Omicron, Monroe. Major productions: *Dracula*, *The Man Who Came to Dinner*, *Spoon River Anthology*, *The Clown and His Circus*, *Aesop's Fables*. 1970-71 Officers: A. C. Sallinger, cast director; Chuck Fuller, stage manager; Terry Wynn, Candie Thompson, business managers. George Brian, faculty director.

NORTHEASTERN STATE COLLEGE, Mu Gamma, Tahlequah, Oklahoma. Major productions: *Only An Orphan Girl*, *Tiger at The Gates*, *Merry Wives of Windsor*, *The Medium*, *Punch and Judy*. 1970-71 Officers: Nancy Potette, president; Paul White, vice-president; Vana Nespor, secretary; Patty Heyl, treasurer. James K. Malone, faculty director.

NORTHEASTERN UNIVERSITY, Nu Chi, Boston, Massachusetts. Major productions: *Ubu Roi*, *Dark of the Moon*, *A Dream Play*, *Antigone*, *The Killing of Sister George*, *Canterbury Tales*. 1970-71 Officers: Martin Browne, Robin Mack, Eugene J. Blackman, faculty director.



Mount Union College: Doug Tarr, Sue LaFollette, Rich Bloor, and Ron Sinesio in *The Decline And Fall Of Practically Everybody*. James E. Vincent, adaptor and director. Peter Elencouf, designer.



Middle Tennessee State University: Clark Tucker and Jenan Dorman in *Theatre At Noon*. Miss Anne Petty, director and scene director.



Mount Mary College: *Pygmalion* directed by Cheryl J. Lello. Maynard R. Samsen, scene designer.

NORTHERN MONTANA COLLEGE, Eta Kappa, Havre. Major productions: *Arms and the Man*, *Henry IV, part I*, *Antigone*, *West Side Story*, *Lysistrata*, *The Fragile Fox*, *Aladdin and the Wonderful Lamp*. 1970-71 Officers: Michael Stevenson, cast director; Bob Kuntz, vice-president; Diana Derbyshire, secretary. Bill Lisenby, faculty director.

NORTHWESTERN COLLEGE, Delta Lambda, Orange City, Iowa. Major productions: *Arms and the Man*, *The Sleeping Beauty*, *A Man for All Seasons*, *My Heart's in the Highlands*, *Under Milkwood*. Kathy Gunnerman, president; Bob Dunkersloot, first vice-president; Howard Maths, second vice-president; Linda Bulthuis, recording secretary; Nattalee DeBoer, corresponding secretary; Joyce Ubben, treasurer. Theora England, faculty director.

NORTHWESTERN STATE COLLEGE, Gamma Rho, Alva, Oklahoma. Major productions: *Cactus Flower*, *Spoon River Anthology*, *Miss Mc Kate*, *An Old Fashioned Mellerdrama*. 1970-71 Officers: Marge Kleinz, president; Nancy Cooper, vice-president; Keith Burkart, secretary-treasurer. L. Stewart, faculty director.



Montana State University:
The Night Thoreau Spent In Jail.

NORWICH UNIVERSITY, Vermont Eta, Northfield, Vermont. Major productions: *The Frogs*, *The Skin of Our Teeth*. 1970-71 Officers: David Wilson, president. Carlton F. Berry, Jr., faculty director.

OAKLAND CITY COLLEGE, Theta Nu, Oakland City, Indiana. Major productions: *Harvey*, *The Miracle Worker*. 1970-71 Officers: Debbie Stevens, general director; Dixon McDowell, business manager; Jim King, worthy playwright. Margaret Earl Harper, faculty director.

PACIFIC LUTHERAN UNIVERSITY, Theta Pi, Tacoma, Washington. Major productions: *Man of La Mancha*, *Between Two Thieves*, *Goodbye Charlie*, *Bus Stop*, *Star-Spangled Girl*, *Little Riding Hood*, *Emperor's New Clothes*. 1970-71 Officers: Greg Nelsen, director; Scott Green, stage manager; Gwen Larson, assistant stage manager; Crys Schuh, business manager. Eric Nordholm, faculty director.



Northeastern University: Celebration directed by Eugene J. Blackman. William Pritchard, designer.

PAN AMERICAN COLLEGE, Sigma Mu, Edinburg, Texas. Major productions: *The Caretaker, A Company of Six, The Glass Menagerie.* J. G. Barefield, faculty director.

PARSONS COLLEGE, Nu Beta, Fairfield, Iowa. Major productions: *Rymers of Eldritch, Your Own Thing, You Know I Can't Hear You When the Water's Running, Don Juan in Hell.* 1970-71 Officers: Doug Crowell and Craig Whiting. Sydney H. Spayde, faculty director.

PFEIFFER COLLEGE, Rho Alpha, Misenheimer, North Carolina. Major productions: *The Wild Duck, For Heaven's Sake.* 1970-71 Officers: Leroy Davis, junior cast director; Henry Misenheimer, stage manager; Larry Griffin, business manager. Mary Wing, faculty director.

PRESBYTERIAN COLLEGE, Tau Mu, Clinton, South Carolina. Major productions: *Midsummer Night's Dream, Importance of Being Earnest, Antigone.* 1970-71 Officers: Marcia Whitman, director; Rodney Clark, stage manager; Dianne Waters, prompter; Judy Howle, acting business manager. D. O. Raina, faculty director.



Northeast Louisiana University: Mike McBeth in Dracula. Chuck Fuller, director.

ROANOKE COLLEGE, Gamma Psi, Salem, Virginia. Major productions: *A Cry of Players, A Funny Thing Happened on the Way to the Forum.* Sam R. Good, faculty director.

ROCKY MOUNTAIN COLLEGE, Gamma Phi, Billings, Montana. Major productions: *The House of Bernarda Alba, Jack, or The Submission, The Diary of Anne Frank.* D. E. Moffit, faculty director.



Northeast Louisiana University: Richard Wexler, Kay Fife, and Ron Silverman in The Man Who Came To Dinner. Dr. George Brian, director. Preston Sisk, scene designer.



Northeastern State College: Debbie Neel, Becky Burroughs, and Janet Halliburton in The Merry Wives Of Windsor. Jim Malone, director and costume designer. Charles Seat, scene designer.

ST. FRANCIS COLLEGE, Pi Zeta, Brooklyn, New York. Major productions: *Philadelphia, Here I Come, You Know I Can't Hear You When the Water's Running.* 1970-71 Officers: Michael McDonald, president; David Rone, vice-president; Thomas Murphy, secretary. B. Anthelm Drowne, faculty director.

SAINT FRANCIS COLLEGE, Tau Delta, Loretto, Pennsylvania. Major productions: *Our Town, Celebration, Richard III, Luther.* 1970-71 Officers: John Larmett, director; Dave Steelman and Paul North, stage managers; Donna Arnot, business manager; Kathy Kraus, prompter. Kenneth L. Resinski, faculty director.

SAINT JOHN'S UNIVERSITY, Upsilon Chi, Jamaica, New York. Major productions: *Little Murders, Shadow and Substance, Waltz of the Torcadors, Streetcar Named Desire, Once Upon A Mattress.* 1970-71 Officers: Robert Kase, director; Christopher Dorsey, stage manager; Richard Sullivan, business manager. Marion H. Lee, faculty director.

SAINT JOSEPH COLLEGE, Tau Iota, Brooklyn, New York. Major productions: *Chalk Garden*. 1970-71 Officers: Therese Buckley, president; Christine Gaurdia, vice-president; Sigrid Brandt, secretary; Jeannette Wiese, treasurer. Sister Margaret Jennings, C.S.J., faculty director.

SAINT MARY OF THE PLAINS COLLEGE, Tau Omicron, Dodge City, Kansas. Major productions: *Anne of the Thousand Days*, *The Dark at the Top of the Stairs*, *Barefoot In The Park*, *The Prime of Miss Jean Brodie*, *The Impossible Years*, *Rope*, *The Heiress*. Michael Pearl, president; Helen Hendricks, vice-president; Morgan Holmes, Rhondal Hall, secretary-treasurer; Alfred Weigel, historian. Barry Alexander, faculty director.



Roanoke College: Victoria Elston, Paul Tuttle, and Thomas Hope in *A Funny Thing Happened On The Way To The Forum*. Francis Ballard, director. Ann Russell Miller, designer.

SALISBURY STATE COLLEGE, Sigma Omega, Salisbury, Maryland. Major productions: *The Firebugs*, *The Business of Good Government*, *The Subject Was Roses*. 1970-71 Officers: Mike Minnette, president; Dave Meenan, vice-president; Jan Powell, secretary-treasurer. Richard Andrew, faculty director.

SHIPPENSBURG STATE COLLEGE, Pi Tau, Shippensburg, Pennsylvania. Major productions: *The Streets of New York*, *Arsenic and Old Lace*, *A Funny Thing Happened on the Way to the Forum*, *The Great God Brown*. James M. Newburger, faculty director.

SIOUX FALLS COLLEGE, Rho Omicron, Sioux Falls, South Dakota. Major productions: *Francesca da Rimini*. 1970-71 Officers: Bob DeYoung, president; John Tucker, vice-president; Carol Sutterlin, secretary-treasurer; Bob Ritter, historian. Perry W. Patterson, faculty director.

SLIPPERY ROCK STATE COLLEGE, Delta Phi, Slippery Rock, Pennsylvania. Major productions: *Dark of the Moon*, *Tartuffe*, *Gypsy*, *Who's Afraid of Virginia Woolfe*, *Private Lives*, *The Night Thoreau Spent in Jail*, *The Royal Hunt of the Sun*. 1970-71 Officers: Tom Beck, president; Deborah Hull, vice-president; Mark McCoy, treasurer; Kathy Kelly, recording secretary; Phyllis Falt, membership secretary. Milton E. Carless, faculty director.



Pacific Lutheran University: Kathy Bellar, Frank Calsbeck, and Randy Grams in *Bus Stop*. Mr. Bill Parker, director. Mr. Eric Nordholm, scene designer.

SOUTH DAKOTA STATE UNIVERSITY, Lambda Sigma, Brookings. Major productions: *Bus Stop*, *Barefoot in the Park*, *Macbeth*, *Oliver*, *Black Comedy* and *White Liars*, *Blihe Spirit*. Judith Zivanovic, faculty director.

SOUTHEASTERN STATE COLLEGE, Gamma Alpha, Durant, Oklahoma. Major productions: *Charlotte's Web*, *Stop The World, I Want to Get Off*, *The Star-Spangled Girl*, *The Fantasticks*, *J.B.* 1970-71 Officers: Paul King, president; Bill Groom, vice-president; Sharon Rogers, secretary. Dave Cook, faculty director.

SOUTHERN COLORADO STATE COLLEGE, Colorado Zeta, Pueblo. Major productions: *The Fantasticks*, *The Most Happy Feller*, *Anatol*, *Raisin in the Sun*, *Summertime*. 1970-71 Officers: Nancy Ponlus, Kinn Van Pelt, Jan Silmon. Ken Plonkey, faculty director.



Northern Montana College: Sid Larson and Francie Veseth in *Henry IV, Part I*. Dr. Mary Clearman, director. Dennis Labuda, scene designer.

SOUTHERN STATE COLLEGE, Mu Phi, Magnolia, Arkansas. Major productions: *Miracle Worker*, *South Pacific*, *World of Carl Sandburg*, *Once Upon A Clothesline*, *Black Comedy*. 1970-71 Officers: Dee Gates Post, president; Rusty Johnson, vice-president; Robby Mason, secretary-treasurer. Margaret Harton, Jake Whitehead, Billie Barnett, faculty directors.

SOUTHWESTERN STATE COLLEGE, Gamma Chi, Weatherford, Oklahoma. Major productions: *Lysistrata*, *The Crucible*, *A Thousand Clowns*. 1970-71 Officers: Bruce Creed, president; Monte Snider, vice-president; Sherry Reser, secretary-treasurer. Claude Kezer, George Hejna, De Williams, faculty directors.

SOUTHWEST MISSOURI STATE COLLEGE, Kappa Gamma, Springfield. Major productions: *Blood Wedding*, *Cabaret*, *Country Wife*, *Juxtaposition*, *Twelfth Night*, *Celebration*. 1970-71 Officers: Le Wilhelm, president; Menno Kisaii, vice-president; Mary Kraii, secretary; Judith Dockery, treasurer; Deborah Gallion, publicity. Leslie Irene Coger, faculty director.

SPRINGFIELD COLLEGE, Pi Phi, Springfield, Massachusetts. Major productions: *The Queen and the Rebels*, *Sanctity*, *Pirates of Penzance*, *The Wax Museum*. 1970-71 Officers: Paul Denzel, president; Bob Barron, treasurer; Fan Tirrell, secretary. Carroll Britch, faculty director.

STATE UNIVERSITY COLLEGE AT FREDONIA, Theta Omega, Fredonia, New York. Major productions: *The Madwoman of Chaillot*, *The Night Thoreau Spent in Jail*, *The Crucible*, *The World of Carl Sandburg*, *The Experiment*, *The Medium*. 1970-71 Officers: Ted Dedee, president; Steve Markuson, vice-president; Kathleen Phelan, secretary; Carl Luss, public relations. Jack L. Cogdill, faculty director.



South Dakota State University: Jim Duffey, Sue Job, and Bo Decker in *Bus Stop*. Dr. Judith Zivanovic, director. Miss Signe Anderson, designer.



State University College at Oswego: *Carousel* directed by John F. Kingston and James J. Soluri. John W. Mincher, Jr., scene designer



Southwest Missouri State: Gary Root, Pat Connors, and Pattie Viles in *Celebration*. Dr. Leslie Irene Coger, director. Byrne Blackwood, scene designer.



State University College at Oswego: *Carousel* directed by John F. Kingston and James J. Soluri. John W. Mincher, Jr., scene designer.

STATE UNIVERSITY COLLEGE, ONEONTA, Lambda Omega, Oneonta, New York. Major productions: *Gnorp*, *Becket*. 1970-71 Officers: Richard Toulson, president; Mary Kaplan, vice-president; Douglas Frank, secretary. Josef Eifenbein, faculty director.

STATE UNIVERSITY COLLEGE, OSWEGO, Mu Iota, Oswego, New York. Major productions: *The Threepenny Opera*, *Once Upon a Mattress*, *The Firebugs*, *Toys in the Attic*, *Slow Dance on the Killing Ground*, *The Taming of the Shrew*, *Cinderella*, *Rehearsal*. 1970-71 Officers: Barnett Freier, cast director; Norma Bunzey, business manager; Diane Hemmes, stage manager. Kathleen K. Pendergast, faculty director.



State University of New York at Albany: *Camino Real* directed by Joseph Balfor. R. J. Donnelly, designer.

STATE UNIVERSITY OF NEW YORK AT ALBANY, Upsilon Mu, Albany. Major productions: *Camino Real*, *A Scent of Flowers*, *Harry, Noon and Night*, *Peter Pan*, *The Measure Taken*, *The Bald Eagle*. 1970-71 Officers: William F. Snyder, president; Gary J. Maggio, vice-president; Claudine Cassan, secretary; Tom Rodcheaver, treasurer. Paul B. Pettit, faculty director.

STERLING COLLEGE, Pi Omega, Sterling, Kansas. Major productions: *Hello, Dolly*, *Death of A Salesman*, *Tartuffe*. 1970-71 Officers: Randy Smith, president; Clark Killion, vice-president; Marilyn Stewart, secretary-treasurer. Gordon Kling, faculty director.

STOUT STATE UNIVERSITY, Zeta Beta, Menomonie, Wisconsin. Major productions: *The Birthday Party*, *Streetcar Named Desire*, *The Fantasticks*. 1970-71 Officers: Robert Schaeffer, president; Gerald Roepke, vice-president; Terann Medcalf, secretary-treasurer. Noel Falkofski, faculty director.



State University College at Oswego: Ken Boyle, Dallas Cogan, Terri Andrews, and Diane Ouckama in *Carousel*. John F. Kingston and James J. Soluri, directors. John W. Mincher, Jr., scene designer.

TAYLOR UNIVERSITY, Sigma Beta, Upland, Indiana. Major productions: *Much Ado About Nothing*, *The Fantasticks*, *The Cherry Orchard*. Allen A. Goetcheus, faculty director.

TEXAS COLLEGE OF ARTS AND INDUSTRY, Kappa Psi, Kingsville. Major productions: *Boy Friend*, *H.M.S. Pinafore*, *Antigone*, *Luther*, *Lion in Winter*, *Tevoa and His Daughters*. 1970-71 Officers: Laura Vela, director; Rick Tinnin, stage manager; Margie McCurdy, business manager. Mary Ann Walsh, faculty director.

THE LINDENWOOD COLLEGES, Psi, St. Charles, Missouri. Major productions: *Lovers*, *Spoon River*, *The Caucasian Chalk Circle*, *The Fantasticks*, *The Zoo Story*, *The American Dream*, *A Message From Cougar*. Robert Douglas Hume, faculty director.



Southeastern State College: Neal Stanfield in *J.B.* Dave Cook, director. Bill Groom, scene designer.

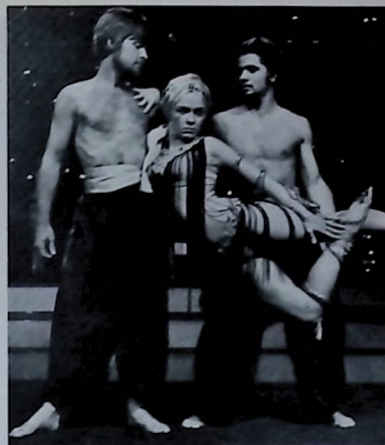
TRENTON STATE COLLEGE, Zeta Sigma, Trenton, New Jersey. Major productions: *Antigone*, *Lysistrata*, *Luv*, *Miss Julie*, *Peter Pan*. 1970-71 Officers: Thomas Lanno, president; Jan Kale, vice-president; Don Hopkins, secretary-treasurer; Chris Kerstein, assistant secretary. Jack McCullough, faculty director.

TRINITY UNIVERSITY, Gamma Beta, San Antonio, Texas. Major productions: *Sea Gull*, *Serpent*, *Hamlet E.S.P.*, *Indians*, *Anna Christie*, *Rite of Spring*. 1970-71 Officers: John R. Black, president; Ginny Rudolph, vice-president; Lenelle Davis, secretary; Bill Moody, treasurer. Anne Butler, faculty director.

TROY STATE UNIVERSITY, Eta Sigma, Troy, Alabama. Major productions: *Mother Courage and Her Children*, *The Star-Spangled Girl*, *The Wizard of Oz*, *Tango*. 1970-71 Officers: Michael Edwards, president; Larkin Brown, vice-president; Kathy Dell, secretary-treasurer. O. David Dye, faculty director.



University of Nevada: Kay Gardner, David Combs, Jack Gardner, Patti Been, and Bill Hindley in *The Serpent*. Roger Wilbur, director. Tom Prewitt, scene designer. David Agress, lighting designer.



Trinity University: Ron Rudolph, Ginny Rudolph, and Ron Piretti in *Kismet*. Allan Holley, director. John C. Henson, scene designer.

UNION UNIVERSITY, Beta Mu, Jackson, Tennessee.

UNITED STATES INTERNATIONAL UNIVERSITY, Sigma Kappa, California Western Campus, San Diego. 1970-71 Officers: Loren Robinson, president; John Lindsay, vice-president; Debby Cutler, secretary; Mark Maynard, treasurer; Jaci Gibson, historian. James Carlsen, faculty director.

UNIVERSITY OF ARKANSAS AT LITTLE ROCK, Eta Mu, Little Rock. Major productions: *A Shot in the Dark*, *The Music Man*, *Dangerous Corner*, *Little Red Riding Hood*, *Look Homeward, Angel*. 1970-71 Officers: Charlie Davidson, president; Mary Reinhardt, president; Claudia Phillips, vice-president; Dave Parrish, business manager. Cliff Haislip, faculty director.



Trinity University: Marcia McClain in *Kismet*. Allan Holley, director. John C. Henson, scene designer.



University of Southwestern Louisiana: Debby Bonnette and Dale Bernard in *Aria Da Capo*. Directed and designed by Hareis Weekly.

UNIVERSITY OF ARKANSAS AT MONTICELLO, Upsilon Theta, Monticello. Major productions: *Two For The See Saw*, *Hamlet*, *The Bremen Town Musicians*. 1970-71 Officers: Betsy Thompson, president; Michelle Rumph, secretary-treasurer; Larry Siedell, senate representative. Fran Franklin, faculty director.

UNIVERSITY OF CORPUS CHRISTI, Rho Xi, Corpus Christi, Texas. Major productions: *No Exit*. 1970-71 Officers: Lon C. Wilder, president; Mary Wilder, vice-president; Lucille Gray, secretary. John W. Wilson, Jr., faculty director.



University of Arkansas at Little Rock: *The Music Man* directed by Cliff Haislip. Tom Schumacher, designer.



University of Richmond: John Willis, Rick Gehr, Bill Tiller, and Nancy Bendall in *The Tempest*. Dr. John H. Lockett, Jr., director. William H. Lockett, Jr., scene designer. Donna Stoeckel, costumer.

UNIVERSITY OF DUBUQUE, *Delta Zeta*, Dubuque, Iowa. Major productions: *Glass Menagerie*, *The Miser*, *The Late Show*. Ray Thompson, faculty director.

UNIVERSITY OF MIAMI, *Mu*, Coral Gables, Florida. Major productions: *Amorous Flea*, *Boys From Syracuse*, *Prime of My Life*, *Gunk*, *Come Blow Your Horn*, *Doctor Doolittle*. 1970-71 Officers: Robert Sylvester, president; Robert Avery, vice-president; Sheila Barash, secretary; H. H. Diers, faculty director.

UNIVERSITY OF NEVADA, *Upsilon Alpha*, Reno. Major productions: *The Serpent*, *Your Own Thing*, *Gallows Humor*. 1970-71 Officers: Carolyn Bourie, director; Dan Lockett, stage manager; Pegi Walts, business manager. Bob Lockett, faculty director.

UNIVERSITY OF NORTHERN COLORADO, *Phi*, Greeley. Major productions: *The Night Thoreau Spent in Jail*, *Tiny Tim*, *La Mancha*, *Peter Pan*, *Under Milkwood*, *Dog*. 1970-71 Officers: Ted Rosen, president; Michael Rosen, secretary; Katy Taylor, secretary; Doug Coval, faculty director.

UNIVERSITY OF RICHMOND, *Eta*, Richmond, Virginia. Major productions: *The Tempest*, *Our Town*, *The Boys From Syracuse*, *The Importance of Being Earnest*. 1970-71 Officers: Ben Curtis, president; Fred Brumbach, vice-president; Mary K. Ligan, secretary; Yvonne Olson, business manager. Alton Williams, faculty director.

UNIVERSITY OF SOUTH CAROLINA, *Gamma Tau*, Columbia. Major productions: *Indians*, *The Glass Menagerie*, *Narrow Road to the Deep North*, *Hello, Dolly*, *Rosencrantz and Guildenstern Are Dead*. 1970-71 Officers: Anita Lane, president; Bonnie Stroup, vice-president. Jack Shirik, faculty director.

UNIVERSITY OF SOUTHWESTERN LOUISIANA, *Theta Tau*, Lafayette. Major productions: *Just for Laughs*, *Aria Da Capo*, *The Little French Tailor*. 1970-71 Officers: Claude LeBlanc, cast director; Vic Veard, stage manager; Marilyn Stanzel, business manager. Harold W. Poe, faculty director.

UPSALA COLLEGE, *Eta Zeta*, East Orange, New Jersey. Major productions: *A Funny Thing Happened on the Way to the Forum*, *School for Wives*, *Barabbas*, *View Rock*. 1970-71 Officers: Peter Alfano, president; Debbie Breien, vice-president-secretary; Eileen Cushing, treasurer. Robert Marcuzzo, faculty director.



University of Richmond: Dave Williams, John Szechagiewicz, and Bruce Miller in *The Tempest*. Dr. John D. Wehsid, director. William H. Lockett, Jr. and Frederic Brumbach, scene designer. Donna Stoeckel, costumer.

VALDOSTA STATE COLLEGE, Rho Epsilon, Valdosta, Georgia. Major productions: *Cyrano de Bergerac*, *Peace*, *Slow Dance on the Killing Ground*. 1970-71 Officers: Sharon Long, president; Danny Peterman, vice-president; Sharon Norris, secretary-treasurer. Stan DeHart, faculty director.

VALLEY CITY STATE COLLEGE, Alpha Phi, Valley City, North Dakota. Major productions: *Come Blow Your Horn*, *The Fantasticks*, *The Man*, *The Tender Trap*. 1970-71 Officers: Alan Hearonemus, president; Marcia Foss, vice-president; Lorraine Sommerfeld, secretary-treasurer. Duane Brown, faculty director.

WEST CHESTER STATE COLLEGE, Rho Mu, West Chester, Pennsylvania. Major productions: *Exit the King*, *The Brothers McNamee*, *Mrs. Moonlight*, *Dagzil*. 1970-71 Officers: Robert McCracken, president; George Milns, vice-president; Kathleen Rearick, secretary-treasurer. Sandra Hall, faculty director.

WESTMAR COLLEGE, Iota Lambda, Le Mars, Iowa. Major productions: *She Stoops to Conquer*, *The Marriage of Figaro*, *Once Upon A Mattress*. 1970-71 Officers: Robert Devany, president; Sam Parkins, vice-president; Linda Giese, secretary-treasurer; Bill Monroe, historian. Ruth Monroe, faculty director.

WESTMINSTER COLLEGE, Nu Gamma, New Wilmington, Pennsylvania. Major productions: *Three Penny Opera*, *Man of La Mancha*, *The Imaginary Invalid*, *The Little Foxes*, *Winnie the Pooh*. 1970-71 Officers: David Reinhardsen, president; Debbie Holt, vice-president; Janet Maier, secretary; Dave Eakin, treasurer. Earl C. Lammel, faculty director.

WHITWORTH COLLEGE, Theta Rho, Spokane, Washington. Major productions: *Hadrian VII*, *Let Man Live*, *The Tempest*. 1970-71 Officers: David Johnstone, president; Bruce Talkington, vice-president; Jan Masters, secretary-treasurer. Albert C. Gunderson, faculty director.



West Chester State College: Dino Vallone, Linda Zwick, and Vincent Campbell in *Mrs. Moonlight*. William F. Cope, director. Austin O. Prego, scene designer.



Westmar College: Deborah Starzl, Doug Anders, and Catharine Decker in *She Stoops To Conquer*. Ruth Monroe, director and scene designer.

WILLIAM JEWELL COLLEGE, Beta Pi, Liberty, Missouri. Major productions: *Thurber Carnival*, *The Madwoman of Chailot*. Dennis M. Murphy, faculty director.

WISCONSIN STATE UNIVERSITY, Eta Tau, Platteville. Major productions: *Biedermann and The Firebugs*, *Thieves' Carnival*, *The Odd Couple*, *Exit The King*, *Harvey*. 1970-71 Officers: Kenn Miller, president; Jo Ann Klappenbach, secretary-treasurer. Thomas S. Goltry, faculty director.

WISCONSIN STATE UNIVERSITY—SUPERIOR, Alpha Lambda, Superior. Major productions: *The Changeling*, *The Vision of Simone Machard*, *Becket*, *The Odyssey: A Modern Sequel*. 1970-71 Officers: Robert Jansen, president; A. Moffatt Evans, vice-president; L. Alice Healy, secretary; Steven Erickson, treasurer; Greg Wurz, historian. Pacey Beers, faculty director.



William Jewell College: Craig Flynn, Geoffry Peistrup, Jack DeWees, and Lee Crites in *The Madwoman Of Chailot*. Dennis M. Murphy, director-designer.

DIRECTORY

GRAND DIRECTOR AND BUSINESS MANAGER

Dr. Yetta G. Mitchell
P. O. Box 322
Waxahachie, Texas 75165

EDITOR & GRAND STAGE MANAGER

Dr. Donald P. Garner
Eastern Illinois University
Charleston, Illinois 61920



ADDRESS ALL
BUSINESS COMMUNICATIONS TO
GRAND BUSINESS MANAGER

Alpha, Fairmont State College, Fairmont, W. Va. 26554
Beta, Marshall University, Huntington, W. Va. 25701
Gamma, Washington & Lee University, Lexington, Va. 24450
Delta, Acadia University, Wolfville, N. S., Canada
Epsilon, Lynchburg College, Lynchburg, Va. 24504
Zeta, Western State College, Gunnison, Colo. 81230
Eta, University of Richmond, Richmond, Va. 23173
Theta, Baker University, Baldwin, Kan. 66006
Iota, Johns Hopkins University, Baltimore, Md. 21218
Kappa, Ottawa University, Ottawa, Kan. 66067
Lambda, Washington & Jefferson Coll., Washington, Pa. 15301
Mu, University of Miami, Coral Gables, Fla. 33124
Nu, University of Houston, Houston, Tex. 77004
Xi, Chico State College, Chico, Calif. 95926
Omicron, Northeast Louisiana State, Monroe 71201
Pi, West Virginia State College, Institute 25112
Rho, Lincoln Memorial University, Harrogate, Tenn. 37752
Sigma, Linfield College, McMinnville, Ore. 97129
Tau, Texas Technological University, Lubbock 79409
Upsilon, Kansas Wesleyan University, Salina 67401
Phi, University of Northern Colorado, Greeley 80631
Chi, Buena Vista College, Storm Lake, Iowa 50588
Psi, Lindenwood College, St. Charles, Mo. 63301
Omega, Iowa Wesleyan College, Mt. Pleasant 52641
Alpha Alpha, University of Mississippi, University 38677
Alpha Beta, Coker College, Hartsville, S. C. 29550
Alpha Gamma, Morningside College, Sioux City, Iowa 51106
Alpha Delta, Tarkio College, Tarkio, Mo. 64491
Alpha Epsilon, William Woods, & Westminster College, Fulton, Mo. 65251
Alpha Zeta, Central College, Pella, Iowa 50219
Alpha Eta, Geneva College, Beaver Falls, Pa. 15010
Alpha Theta, McKendree College, Lebanon, Ill. 62254
Alpha Iota, Berea College, Berea, Ky. 40403
Alpha Kappa, University of Tampa, Tampa, Fla. 33606
Alpha Lambda, Wisconsin State University, Superior 54880
Alpha Mu, Emory and Henry College, Emory, Va. 24327
Alpha Nu, Georgia Southwestern College, Americus 31709
Alpha Xi, Arkansas College, Batesville 72501
Alpha Omicron, Bloomsburg St. Coll., Bloomsburg, Pa. 17815
Alpha Pi, Millsaps College, Jackson, Miss. 39210
Alpha Rho, W. Va. Wesleyan College, Buckhannon 26201
Alpha Sigma, Louisiana College, Pineville 71360
Alpha Tau, Mt. Union College, Alliance, Ohio 44601
Alpha Upsilon, Clarion State College, Clarion, Pa. 16214
Alpha Phi, Valley City State College, Valley City, N. D. 58072
Alpha Chi, Shepherd College, Shepherdstown, W. Va. 25443
Alpha Psi, Wisconsin State University, La Crosse 54601
Alpha Omega, Augustana College, Rock Island, Ill. 61201

Puerto Alpha, University of Puerto Rico, Rio Piedras 00931
Beta Alpha, George Peabody College, Nashville, Tenn. 37203
Beta Beta, St. Norbert College, West De Pere, Wis. 54178
Beta Gamma, Bethany College, Bethany, W. Va. 26032
Beta Delta, N.Y. Univ., School of Education, N.Y., N.Y. 10003
Beta Epsilon, Douglas College of Rutgers University, New Brunswick, N. J. 08903
Beta Zeta, East Central State College, Ada, Okla. 74821
Beta Eta, Huntingdon College, Montgomery, Ala. 36106
Beta Theta, Illinois State University, Normal 61761
Beta Iota, Valparaiso University, Valparaiso, Ind. 46383
Beta Kappa, Upper Iowa University, Fayette 52142
Beta Lambda, Western Conn. State College, Danbury 06810
Beta Mu, Union University, Jackson, Tenn. 38301
Beta Nu, Northern Arizona University, Flagstaff 86001
Beta Xi, Concord College, Athens, W. Va. 24712
Beta Omicron, California State College, California, Pa. 15419
Beta Pi, William Jewell College, Liberty, Mo. 64068
Beta Rho, Wayne State College, Wayne, Neb. 68787
Beta Sigma, Mayville State College, Mayville, N. D. 58257
Beta Tau, Newberry College, Newberry, S. C. 29108
Beta Upsilon, West. New Mexico University, Silver City 88061
Beta Phi, Stephen F. Austin College, Nacogdoches, Tex. 75961
Beta Chi, Defiance College, Defiance, Ohio 43512
Beta Psi, Kent State University, Kent, Ohio 44240
Beta Omega, Keuka College, Keuka Park, N. Y. 14478
Idaho Beta, Boise State College, Boise, Idaho 83707
Gamma Alpha, Southeastern State College, Durant, Okla. 74701
Gamma Beta, Trinity University, San Antonio, Tex. 78212
Gamma Gamma, University of Alabama, University 35486
Gamma Delta, N. Mex. Highlands Univ., Las Vegas 87701
Gamma Epsilon, Murray State University, Murray, Ky. 42071
Gamma Zeta, Colorado State University, Ft. Collins 80521
Gamma Eta, Lenoir Rhyme College, Hickory, N. C. 28601
Gamma Theta, Indiana Central College, Indianapolis 46227
Gamma Iota, Sul Ross State College, Alpine, Tex. 79830
Gamma Kappa, Edinboro State College, Edinboro, Pa. 16412
Gamma Lambda, Lakeland College, Sheboygan, Wis. 53081
Gamma Mu, Muhlenberg College, Allentown, Pa. 18104
Gamma Nu, Georgia State College, Atlanta 30303
Gamma Xi, Dickinson State College, Dickinson, N. D. 58601
Gamma Omicron, Texas Lutheran College, Seguin 78155
Gamma Pi, Tift College, Forsythe, Ga. 31029
Gamma Rho, Northwestern State College, Alva, Okla. 73717
Gamma Tau, University of South Carolina, Columbia 29208
Gamma Upsilon, State University of New York at Cortland, Cortland 13045
Gamma Phi, Rocky Mountain College, Billings, Mont. 59102
Gamma Chi, Southwestern State College, Weatherford, Okla. 73096

Gamma Psi, Roanoke College, Salem, Va. 24153
 Gamma Omega, Montana State University, Bozeman 59715
 Oklahoma Gamma, Oklahoma City Univ., Oklahoma City 73106
 Delta Alpha, Univ. of N. Brunswick, Frederikton, N.B., Can.
 Delta Beta, Alma College, Alma, Mich. 48801
 Delta Gamma, Alderson-Broadbent College, Philippi, W. Va. 26416
 Delta Delta, Hampden-Sydney College, Hampden-Sydney, Va. 23943
 Delta Epsilon, North Central College, Naperville, Ill. 60540
 Delta Zeta, University of Dubuque, Dubuque, Iowa 52001
 Delta Eta, Northwestern State College, Natchitoches, La. 71457
 Delta Theta, Minot State College, Minot, N. D. 58701
 Delta Kappa, Mary Hardin-Baylor College, Belton, Tex. 76513
 Delta Lambda, Northwestern College, Orange City, Iowa 51041
 Delta Mu, Winthrop College, Rock Hill, S. C. 29733
 Delta Nu, Florida Southern College, Lakeland 33802
 Delta Xi, Rensselaer Polytechnic Institute, Troy, N. Y. 12181
 Delta Omicron, Doane College, Crete, Neb. 68333
 Delta Pi, California State Poly. College, San Luis Obispo 93401
 Delta Rho, Angelo State College, San Angelo, Tex. 76901
 Delta Sigma, Bethel College, North Newton, Kan. 67117
 Delta Tau, Ursinus College, Collegeville, Pa. 19426
 Delta Upsilon, Texas Christian University, Fort Worth 76129
 Delta Phi, Slippery Rock State College, Slippery Rock, Pa. 16057
 Delta Chi, Okla. State Pan Handle College, Goodwell, 73939
 Delta Psi, Miss. State College for Women, Columbus 39701
 Delta Omega, Judson College, Marion, Ala. 36756
 Zeta Alpha, Abilene Christian College, Abilene, Tex. 79601
 Zeta Beta, Stout State University, Menomonie, Wis. 54751
 Zeta Gamma, Simpson College, Indianola, Iowa 50125
 Zeta Delta, State College of Arkansas, Conway 72032
 Zeta Epsilon, Delta State College, Cleveland, Miss. 38732
 Zeta Zeta, Bethany College, Lindsborg, Kan. 67456
 Zeta Eta, University of Pittsburgh, Pittsburgh, Pa. 15213
 Zeta Theta, Hardin-Simmons University, Abilene, Tex. 79601
 Zeta Iota, California State College at Hayward, Calif. 94542
 Zeta Kappa, Salem College, Salem, W. Va. 26426
 Zeta Lambda, Central Methodist College, Fayette, Mo. 65248
 Zeta Nu, SUNY College at Geneseo, N. Y. 14454
 Zeta Xi, La Verne College, La Verne, Calif. 91750
 Zeta Omicron, Hendrix College, Conway, Ark. 72032
 Zeta Pi, Mercer University, Macon, Ga. 31207
 Zeta Rho, Florence State College, Florence, Ala. 35630
 Zeta Sigma, Stonehill College, North Easton, Mass. 02356
 Zeta Tau, University of Texas at El Paso, El Paso 79999
 Zeta Upsilon, Heidelberg College, Tiffin, Ohio 44883
 Zeta Phi, Eastern Kentucky University, Richmond 40476
 Zeta Chi, Union College, Baraboursville, Ky. 40906
 Zeta Psi, Temple Buell College, Denver, Colo. 80220
 Zeta Omega, Lewis College, Lockport, Ill. 60441
 Colorado Zeta, Southern Colorado State College, Pueblo 81005
 Indiana Zeta, Ball State University, Muncie, Ind. 47306
 Ohio Zeta, Ashland College, Ashland, Ohio 44805
 Eta Alpha, Marietta College, Marietta, Ohio 45750
 Eta Beta, Carson-Newman College, Jefferson City, Tenn. 37760
 Eta Delta, Mars Hill College, Mars Hill, N. C. 28754
 Eta Epsilon, Chaminade College of Honolulu, Hawaii 96816
 Eta Zeta, Upsala College, East Orange, N. J. 07019
 Eta Eta, Mary Washington College, Fredericksburg, Va. 22401
 Eta Theta, Washburn University, Topeka, Kan. 66621
 Eta Iota, West Texas State University, Canyon 79015
 Eta Kappa, Northern Montana College, Havre 59501
 Eta Lambda, Eastern Mont. Coll. of Education, Billings 59101
 Eta Mu, University of Arkansas at Little Rock, 72204
 Eta Nu, Meredith College, Raleigh, N. C. 27602
 Eta Xi, Thiel College, Greenville, Pa. 16125
 Eta Omicron, Carthage College, Kenosha, Wis. 53140
 Eta Pi, Mississippi State University, State College 39762
 Eta Rho, West Liberty State College, W. Va. 26074
 Eta Sigma, Troy State University, Troy, Ala. 36081
 Eta Tau, Wisconsin State University, Platteville 53818
 Eta Upsilon, Bridgewater College, Bridgewater, Va. 22812
 Eta Phi, Youngstown University, Youngstown, Ohio 44503
 Eta Chi, Pacific University, Forest Grove, Ore. 97116
 Eta Psi, Seattle Pacific College, Seattle, Wash. 98119
 Eta Omega, Harding College, Searcy, Ark. 72143
 Colorado Eta, Ft. Lewis A. & M. College, Durango, Colo. 81301
 Idaho Eta, College of Idaho, Caldwell 83605
 Iowa Eta, C. W. Post College, Brookville, N. Y. 11548
 Tennessee Eta, Milligan College, Milligan College, Tenn. 37682
 Vermont Eta, Norwich University, Northfield, Vt. 05663
 Theta Alpha, Glenville State College, Glenville, W. Va. 26351
 Theta Beta, Georgia College, Milledgeville 31061
 Theta Gamma, La Grange College, La Grange, Ga. 30240
 Theta Delta, University of Tennessee, Knoxville 37916
 Theta Epsilon, McPherson College, McPherson, Kan. 67460
 Theta Zeta, Lock Haven State College, Lock Haven, Pa. 17745
 Theta Eta, Hool College, Frederick, Md. 21701
 Theta Theta, Waynesburg College, Waynesburg, Pa. 15370
 Theta Kappa, San Francisco State College, Calif. 94132
 Theta Lambda, Georgia Southern College, Statesboro 30458
 Theta Mu, University of Minnesota, Duluth Campus, 55455
 Theta Nu, Oakland City College, Oakland City, Ind. 47560
 Theta Xi, D. of C. Teachers College, Washington, D. C. 20016
 Theta Omicron, Texas Wesleyan College, Fort Worth 76105
 Theta Pi, Pacific Lutheran University, Tacoma, Wash. 98447
 Theta Rho, Whitworth College, Spokane, Wash. 99218
 Theta Sigma, Missouri Valley College, Marshall 65349
 Theta Tau, Univ. of Southwestern Louisiana, Lafayette 70501
 Theta Upsilon, Radford College, Radford, Va. 24141
 Theta Phi, Susquehanna University, Sellersgrove, Pa. 17870
 Theta Chi, Eastern Oregon College, La Grande 96750
 Theta Psi, Hastings College, Hastings, Neb. 68401
 Theta Omega, State University of New York, Fredonia 14063
 Iota Alpha, Pembroke State College, Pembroke, N. C. 28372
 Iota Beta, Wisconsin State University, River Falls 54922
 Iota Gamma, Cedar Crest College, Allentown, Pa. 18104
 Iota Delta, McMurray College, Abilene, Tex. 79405
 Iota Epsilon, Southwest Tex. State Coll., San Marcos 78666
 Iota Zeta, Mercyhurst College, Erie, Pa. 16501
 Iota Eta, C. W. Post College, Brookville, N. Y. 11548
 Iota Theta, Moravian College, Bethlehem, Pa. 18018
 Iota Iota, Sam Houston State Univ., Huntsville, Tex. 77340
 Iota Kappa, Davidson College, Davidson, N. C. 28036
 Iota Lambda, Westminster College, LeMars, Iowa 51631
 Iota Mu, Arkansas A.M. and N. College, Pine Bluff 71601
 Iota Nu, Immaculate College, Immaculate, Pa. 19345
 Iota Xi, Incarnate Word College, San Antonio, Tex. 78209
 Iota Omicron, East Stroudsburg State College, Pa. 18301
 Iota Pi, Our Lady of the Lake College, San Antonio, Tex. 78207
 Iota Rho, Coe College, Cedar Rapids, Iowa 52402
 Iota Sigma, Towson State College, Baltimore, Md. 21204
 Iota Tau, Longwood College, Farmville, Va. 23901
 Iota Upsilon, Bethaven College, Jackson, Miss. 39202
 Iota Chi, Columbia College, Columbia, S. C. 29203
 Iota Psi, Manchester College, North Manchester, Ind. 46962
 Iota Omega, Davis-Elkins College, Elkins, W. Va. 26241
 Kappa Alpha, Berry College, Mount Berry, Ga. 30149
 Kappa Beta, Gannon College, Erie, Pa. 16501
 Kappa Gamma, Southwest Mo. State Coll., Springfield 65802
 Kappa Delta, Bethel College, McKenzie, Tenn. 38201
 Kappa Epsilon, Bradley University, Peoria, Ill. 61606
 Kappa Zeta, Cleveland State University, Cleveland, Ohio 44115
 Kappa Eta, Ferris State College, Big Rapids, Mich. 49307
 Kappa Theta, Central Mich. State Univ., Mt. Pleasant 48858
 Kappa Iota, Southwestern College, Memphis, Tenn. 38112
 Kappa Lambda, State Univ. College, New Paltz, N. Y. 12561
 Kappa Mu, Oregon College of Education, Marmouth 97361
 Kappa Nu, W. Va. Institute of Tech., Montgomery 25136
 Kappa Xi, Frostburg State College, Frostburg, Md. 21532
 Kappa Omicron, Belmont College, Nashville, Tenn. 37203
 Kappa Pi, Greensboro College, Greensboro, N. C. 27402
 Kappa Rho, Georgetown College, Georgetown, Ky. 40324
 Kappa Sigma, Northwest Mo. State Coll., Maryville 64468
 Kappa Tau, Idaho State University, Pocatello 83201
 Kappa Upsilon, Eastern N. Mex. Univ., Portales 88130
 Kappa Phi, Texas College of Arts & Industry, Kingsville 78363
 Kappa Chi, Lewis & Clark College, Portland, Ore. 97219
 Kappa Psi, William Penn College, Ocala, Iowa 52577
 Kappa Omega, Wayland Baptist College, Plainville, Tex. 79072
 Lambda Alpha, Blue Mountain College, Blue Mountain, Miss. 38610
 Lambda Beta, Keene State College, Keene, N. H. 03431
 Lambda Gamma, Middle Tenn. St. Univ., Murfreesboro 37130
 Lambda Delta, Morris Harvey Coll., Charleston, W. Va. 25304
 Lambda Epsilon, East Tenn. State Univ., Johnson City 37601
 Lambda Zeta, Appalachian State College, Boone, N. C. 28607
 Lambda Eta, Drew University, Madison, N. J. 07940
 Lambda Theta, Anderson College, Anderson, Ind. 46011
 Lambda Iota, Midland College, Fremont, Neb. 68025
 Lambda Kappa, Wagner College, Staten Island, N. Y. 10301
 Lambda Lambda, Arkansas State Univ., State Univ. 72467
 Lambda Mu, Wartburg College, Waverly, Iowa 50677
 Lambda Nu, Univ. of Southern Miss., Hattiesburg 39401
 Lambda Xi, Ft. Hays Kansas State College, Hays 67601
 Lambda Omicron, Elon College, Elon, N. C. 27244
 Lambda Pi, Villanova University, Villanova, Pa. 19085
 Lambda Rho, Central State College, Edmond, Okla. 73034
 Lambda Sigma, South Dakota State Univ., Brookings 57006
 Lambda Tau, Emmanuel College, Boston, Mass. 02115
 Lambda Upsilon, Mansfield State College, Mansfield, Pa. 16933
 Lambda Phi, Dickinson College, Carlisle, Pa. 17013
 Lambda Chi, University of Nebraska at Omaha, Omaha 68101
 Lambda Psi, Tusculum College, Greeneville, Tenn. 37743
 Lambda Omega, State Univ. College at Onondaga, N. Y. 13820

Kentucky **Lambda**, Ky. Wesleyan Coll., Owensboro 43201
 Loras Players Iowa, Loras College, Dubuque, Iowa 52001
 Mu **Alpha**, Hillsdale College, Hillsdale, Mich. 49242
 Mu **Beta**, Emory University, Emory University, Ga. 30322
 Mu **Gamma**, Northeastern St. Coll., Tahlequah, Okla. 74464
 Mu **Delta**, New Mexico State University, Las Cruces 88001
 Mu **Epsilon**, Adams State College, Alamosa, Colo. 81101
 Mu **Zeta**, Austin Peay State College, Clarksville, Tenn. 37040
 Mu **Eta**, Texas State University, Commerce 75429
 Mu **Theta**, John Carroll University, Cleveland, Ohio 44118
 Mu **Iota**, State University College, Oswego, N. Y. 13126
 Mu **Lambda**, Western Ky. State Univ., Bowling Green 42101
 Mu **Mu**, Washington College, Chestertown, Md. 21620
 Mu **Nu**, Francis T. Nicholls St. Coll., Thibodaux, La. 70301
 Mu **Xi**, Boston University, Boston, Mass. 02215
 Mu **Omicron**, Memphis State University, Memphis, Tenn. 38111
 Mu **Pi**, Creighton University, Omaha, Neb. 68131
 Mu **Rho**, Rhode Island College, Providence 02908
 Mu **Sigma**, National College of Education, Evanston, Ill. 60021
 Mu **Tau**, Central Washington State College, Ellensburg 98926
 Mu **Upsilon**, Athens College, Athens, Ala. 35611
 Mu **Phi**, Southern State College, Magnolia, Ark. 71753
 Mu **Chi**, Adelphi Univ., Garden City, Long Island, N. Y. 11530
 Mu **Psi**, Hofstra University, Hempstead, N. Y. 11550
 Mu **Omega**, Duquesne University, Pittsburgh, Pa. 15219
 Nu **Alpha**, Livingston University, Livingston, Ala. 35470
 Nu **Beta**, Parsons College, Fairfield, Iowa 52556
 Nu **Gamma**, Westminster College, New Wilmington, Pa. 16142
 Nu **Delta**, Saint Mary's College, Winona, Minn. 55987
 Nu **Epsilon**, Evansville College, Evansville, Ind. 47701
 Nu **Zeta**, Jersey City State College, Jersey City, N. J. 07305
 Nu **Eta**, Niagara University, Niagara University, N. Y. 14109
 Nu **Iota**, Hartwick College, Oneonta, N. Y. 13820
 Nu **Kappa**, Austin College, Sherman, Tex. 75090
 Nu **Lambda**, College of Notre Dame, Baltimore, Md. 21210
 Nu **Mu**, Mount Marty College, Yankton, S. D. 57078
 Nu **Nu**, Findlay College, Findlay, Ohio 45840
 Nu **Xi**, St. Mary's Dominican College, New Orleans, La. 70118
 Nu **Omicron**, Indiana Univ. of Pennsylvania, Indiana 15701
 Nu **Pi**, North Georgia College, Dahlonega 30533
 Nu **Rho**, The College of Emporia, Emporia, Kan. 66801
 Nu **Sigma**, Lake Forest College, Lake Forest, Ill. 60045
 Nu **Tau**, Carroll College, Waukesha, Wis. 53186
 Nu **Upsilon**, Kearney State College, Kearney, Neb. 68847
 Nu **Phi**, Morgan State College, Baltimore, Md. 21212
 Nu **Chi**, Northeastern University, Boston, Mass. 02115
 Nu **Psi**, The State University of Rutgers, Newark, N. J. 07102
 Nu **Omega**, College of St. Teresa, Winona, Minn. 55987
 Pi **Alpha**, Eastern Michigan University, Ypsilanti 48197
 Pi **Beta**, Mount Mary College, Milwaukee, Wis. 53222
 Pi **Gamma**, McNeese State College, Lake Charles, La. 70601
 Pi **Delta**, Midwestern University, Wichita Falls, Tex. 76308
 Pi **Epsilon**, Gettysburg College, Gettysburg, Pa. 17325
 Pi **Zeta**, St. Francis College, Brooklyn, N. Y. 11201
 Pi **Eta**, Birmingham-Southern College, Birmingham, Ala. 35204
 Pi **Iota**, Southern Oregon College of Education, Ashland 97520
 Pi **Kappa**, David Lipscomb College, Nashville, Tenn. 37203
 Pi **Lambda**, Illinois College, Jacksonville 62650
 Pi **Mu**, Whittier College, Whittier, Calif. 90608
 Pi **Nu**, Marygrove College, Detroit, Mich. 48221
 Pi **Xi**, Chadron State College, Chadron 69337
 Pi **Omicron**, Lamar State Coll. of Tech., Beaumont, Tex. 77704
 Pi **Pi**, Converse College, Spartanburg, S. C. 29301
 Pi **Rho**, Xavier University, New Orleans, La. 70125
 Pi **Sigma**, Mercy College, Detroit, Mich. 48219
 Pi **Tau**, Shippensburg State College, Shippensburg, Penn. 17257
 Pi **Upsilon**, Tenn. Tech. Univ., Cookeville 38501
 Pi **Phi**, Springfield College, Springfield, Mass. 01109
 Pi **Chi**, Mississippi College, Clinton 39056
 Pi **Psi**, Westfield State College, Westfield, Mass. 01085
 Pi **Omega**, Sterling College, Sterling, Kan. 67579
 Rho **Alpha**, Pfeiffer College, Misenheimer, N. C. 28109
 Rho **Beta**, Boston State College, Boston, Mass. 02115
 Rho **Gamma**, Univ. of Tenn. Martin Campus, Tenn. 38237
 Rho **Delta**, Black Hills State College, Spearfish, S. D. 57783
 Rho **Epsilon**, Valdosta State College, Valdosta, Ga. 31601
 Rho **Zeta**, Fairleigh Dickinson University, Madison, N. J. 07940
 Rho **Eta**, Lebanon Valley College, Annville, Pa. 17003
 Rho **Theta**, Paterson State College, Wayne, N. J. 07473
 Rho **Iota**, Eastern Washington College, Cheney 99004
 Rho **Kappa**, Worcester Poly. Inst., Worcester, Mass. 01609
 Rho **Lambda**, Framingham St. Coll., Framingham, Mass. 01701
 Rho **Mu**, West Chester State College, West Chester, Pa. 19380
 Rho **Nu**, Glassboro State College, Glassboro, N. J. 08028
 Rho **Xi**, University of Corpus Christi, Corpus Christi, Tex. 78411
 Rho **Omicron**, Sioux Falls College, Sioux Falls, S. D. 57101
 Rho **Pi**, Notre Dame College Staten Island, Staten Island, N. Y. 10301
 Rho **Rho**, Monmouth College, West Long Branch, N. J. 07764
 Rho **Sigma**, Millersville State College, Millersville, Pa. 17551
 Rho **Tau**, Luther College, Decorah, Iowa 52101
 Rho **Upsilon**, Kutztown State College, Kutztown, Pa. 19530
 Rho **Phi**, Grand Canyon College, Phoenix, Ariz. 85017
 Rho **Chi**, St. Joseph's College, Philadelphia, Pa. 19131
 Rho **Psi**, Erskine College, Due West, S. C. 29639
 Rho **Omega**, Notre Dame College, Cleveland, Ohio 44121
 Sigma **Alpha**, Okla. Christian College, Okla. City 73111
 Sigma **Beta**, Taylor University, Upland, Ind. 46989
 Sigma **Gamma**, North Texas State University, Denton 76203
 Sigma **Delta**, Viterbo College, La Crosse, Wis. 54601
 Sigma **Zeta**, Trenton State College, Trenton, N. J. 08625
 Sigma **Eta**, Merrimack College, North Andover, Mass. 08145
 Sigma **Theta**, Xavier University, Cincinnati, Ohio 45207
 Sigma **Iota**, Dana College, Blair, Neb. 68008
 Sigma **Kappa**, California Western University, San Diego 92106
 Sigma **Lambda**, La. State Univ. in New Orleans, N. O. 70122
 Sigma **Mu**, Pan American College, Edinburg, Tex. 78539
 Sigma **Nu**, College of Steubenville, Steubenville, Ohio 43954
 Sigma **Xi**, Oklahoma College of Liberal Arts, Chickasha 73019
 Sigma **Omicron**, Emerson College, Boston, Mass. 02116
 Sigma **Pi**, California State Polytechnic College (Kellogg-Vorhis Campus), Pomona 91766
 Sigma **Rho**, California Lutheran College, Thousand Oaks 91360
 Sigma **Sigma**, San Francisco College for Women, Calif. 94118
 Sigma **Tau**, Cumberland College, Williamsburg, Ky. 40769
 Sigma **Upsilon**, College of Guam, Agaña, Guam 96910
 Sigma **Phi**, Elizabethtown College, Elizabethtown, Pa. 17022
 Sigma **Chi**, William Carey College, Hattiesburg, Miss. 39401
 Sigma **Psi**, Wright State Campus, Dayton, Ohio 45431
 Sigma **Omega**, Salisbury State College, Salisbury, Md. 21801
 Tau **Alpha**, University of Cincinnati, Cincinnati, Ohio 45221
 Tau **Beta**, Aurora College, Aurora, Ill. 60507
 Tau **Gamma**, Auburn University, Auburn, Ala. 36830
 Tau **Delta**, St. Francis College, Loretto, Pa. 15940
 Tau **Epsilon**, Barat College of the Sacred Heart, Lake Forest, Ill. 60045
 Tau **Zeta**, St. Mary's University, San Antonio, Tex. 78228
 Tau **Eta**, Rider College, Trenton, N. J. 08602
 Tau **Iota**, St. Joseph's Coll. for Women, Brooklyn, N.Y. 11205
 Tau **Kappa**, University of Oklahoma, Norman 73069
 Tau **Lambda**, Samford University, Birmingham, Ala. 35209
 Tau **Mu**, Presbyterian College, Clinton, S. C. 29325
 Tau **Nu**, Agnes Scott College, Decatur, Ga. 30030
 Tau **Xi**, Virginia Commonwealth Univ., Richmond, Va. 23220
 Tau **Omicron**, St. Mary of the Plains College, Dodge City, Kan. 67801
 Tau **Pi**, Mobile College, Mobile, Ala. 36613
 Tau **Rho**, Howard University, Washington, D. C. 20001
 Tau **Sigma**, LaSalle College, Philadelphia, Pa. 19141
 Tau **Tau**, Pikeville College, Pikeville, Ky. 41501
 Tau **Upsilon**, University of Maryland (Baltimore County Campus), Baltimore 21225
 Tau **Phi**, Prairie View A & M College, Prairie View, Tex. 77445
 Tau **Psi**, Limestone College, Gaffney, S. C. 29340
 Tau **Omega**, Marquette University, Milwaukee, Wis. 53233
 Upsilon **Alpha**, University of Nevada, Reno 89507
 Upsilon **Beta**, Lincoln University, Jefferson City, Mo. 65101
 Upsilon **Gamma**, Loyola College, Baltimore, Md. 21210
 Upsilon **Delta**, Bryant College, Providence, R. I. 02906
 Upsilon **Zeta**, Northeast Mo. St. Coll., Kirksville 63501
 Upsilon **Eta**, Huntington College, Huntington, Ind. 46750
 Upsilon **Theta**, Arkansas A & M College, College Heights 71655
 Upsilon **Iota**, Johnson C. Smith Univ., Charlotte, N. C. 28208
 Upsilon **Kappa**, Phillips University, Enid, Okla. 73701
 Upsilon **Lambda**, Husson College, Bangor, Me. 04401
 Upsilon **Mu**, State Univ. of New York, Albany, N. Y. 12203
 Upsilon **Xi**, High Point College, High Point, N. C. 27262
 Upsilon **Omicron**, Missouri Southern College, Joplin 64801
 Upsilon **Pi**, The Fort Valley State College, Ga. 31030
 Upsilon **Rho**, Mt. Mercy College, Cedar Rapids, Iowa 52402
 Upsilon **Sigma**, Pennsylvania Military College, Chester 19013
 Upsilon **Tau**, Ripon College, Ripon, Wis. 54971
 Upsilon **Chi**, St. John's University, Jamaica, N. Y. 11432
 Upsilon **Omega**, Salem College, Winston-Salem, N. C. 27108
 Phi **Alpha**, Clemson University, Clemson, S. C. 29631
 Phi **Beta**, Grand Valley State College, Allendale, Mich. 49401
 Phi **Gamma**, Ohio Dominican College, Columbus, Ohio 43219
 Phi **Delta**, University of Idaho, Moscow 83843
 Phi **Epsilon**, North Carolina A & T Univ., Greensboro 27411
 Phi **Zeta**, Elizabeth City State University, N. C. 27908
 Phi **Eta**, Rockhurst College, Kansas City, Missouri 64110
 Phi **Theta**, Old Dominion University, Norfolk, Va. 23508
 Phi **Iota**, Jacksonville University, Jacksonville, Florida 32211
 Phi **Kappa**, Asbury College, Wilmore, Ky. 40390
 Phi **Lambda**, Cameron College, Lawton, Okla. 73501
 Phi **Mu**, Hampton Institute, Hampton, Va. 23368
 Phi **Nu**, Fayetteville State University, Fayetteville, N. C. 28301
 Phi **Xi**, Oral Roberts University, Tulsa, Oklahoma 74105

Call For The
ALPHA PSI OMEGA GRAND REHEARSAL
At The
American Educational Theatre Association Convention
Hilton Hotel
San Francisco, California
August 20-23

All information about the Grand Rehearsal will be forwarded to each cast at a later date. Please start to make your plans for a good meeting. It is hoped that each chapter of the fraternity will be represented.



PLEASE NOTE . . .
Change of Address for the Central Office
As of September 1, 1971, address all correspondence to:

DR. YETTA G. MITCHELL
Grand Director and Business Manager
Alpha Psi Omega
P. O. Box 322
Waxahachie, Texas 75165

