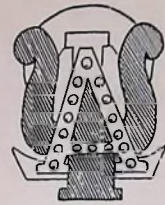


*Rita Stark*

---

ALPHA PSI OMEGA  
***PLAYBILL***

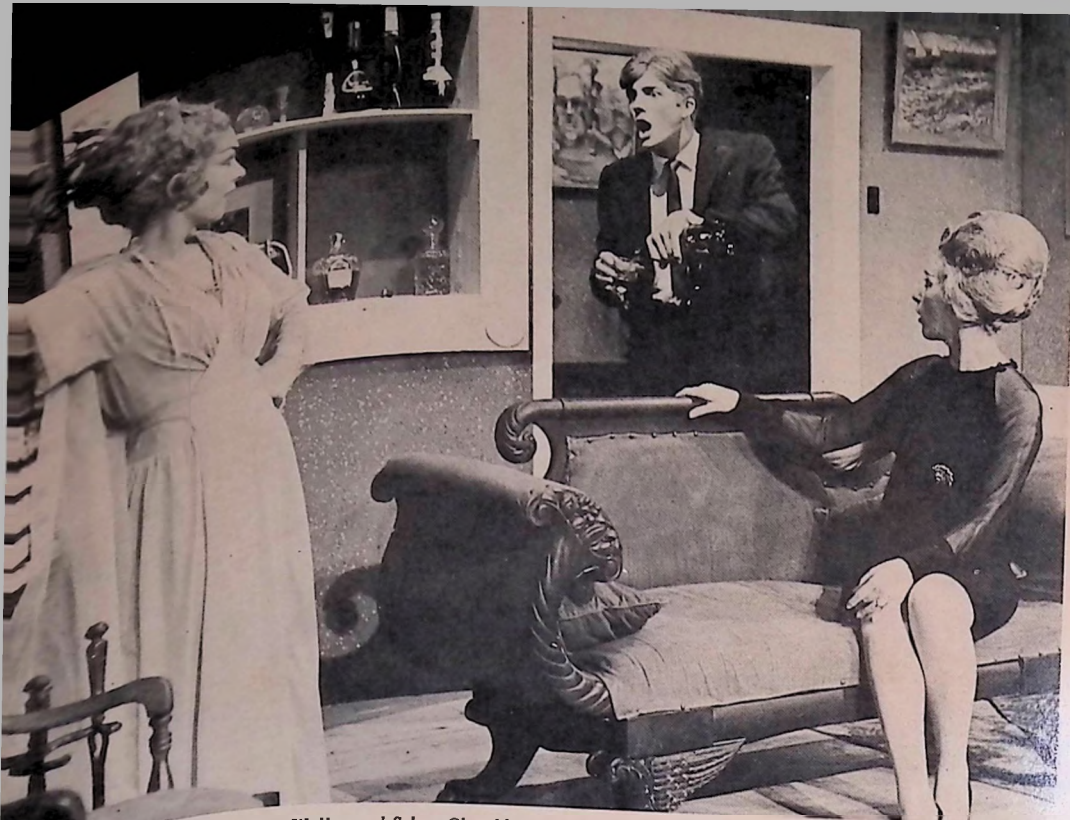
---



1965







*Nancy Wilson, Van Walker and Selma Chambley in a scene from "Blythe Spirit," McNeese State College, directed by Elwood Wilson.*

## 1966 NATIONAL CONVENTION

THE year of our next national convention is just around the corner, December 28, 1966, with the Conrad-Hilton Hotel, Chicago, as the place of meeting. In the theatrical language of our organization, it is the year of our next "Grand Rehearsal." This time is very appropriate for this meeting because it coincides with the December 28-30 National Convention of the American Educational Theatre Association, so that an excellent program will be provided by leaders in the professional and educational theatre for all our members, both student and faculty, who will attend our national convention. If it should happen that the facilities of the Conrad-Hilton are not available, our meeting will be at the nearby Blackstone as it occurred in a previous instance.

Each chapter is entitled to one delegate and as many members as desire to attend. Nationally the meeting is important to our honor society because it is at the Grand Rehearsal that the work of the national organization is

reviewed, its policies formulated and the program of the future outlined. We hope that all chapters will begin now making plans to be represented at the Chicago meeting. Dr. Paul F. Opp, Grand Business Manager of the organization since its inception in 1925, has reached retirement age, and a new national secretary must be selected.

Our organization has an invitation from the National Thespian Society to consolidate our national headquarters with theirs in Cincinnati, Ohio. The National Thespians own an excellent headquarters building that would house all our national records and provide a future seat of operations and do much to assure a prosperous future for our society, now rapidly approaching 600 chapters. It could mean a great deal to us, in a time of rising costs, to be able to keep our national membership fees at the present low figure, to continue publication of the magazine and to furnish the chapters with all the supplies needed.

# THE PLAYBILL

THE PLAYBILL is published annually by the Alpha Psi Omega Dramatic Fraternity to afford college and university dramatic organizations opportunity to acquaint themselves with what is being done by their contemporaries and to serve the Fraternity as an official organ.

## SUMMER THEATRE NUMBER

### TABLE OF CONTENTS

1966 National Convention.....	1
A Summer Tent Theatre.....	3
by Paul F. Opp	
California Western Installed.....	4
by Barry Bostwick	
Audience Accommodations .....	5
by Dr. Arlan Rahlf	
Drama Workshop in a Summer Camp.....	7
by Dr. Dorothy Clifford	
Summer Theatre in Montana.....	8
by Edward J. Thompson	
A Summer Theatre Tour.....	10
by Bernard Schulz	
Staging "Two Gents" in Modern Dress.....	11
by Dr. Donald W. Baker	
The First American Greek Festival.....	12
by James Stiles	
Karole Costumes Characters.....	13
by Fran Cook	
Playwriting Contest Announced.....	14
Colleges Active in Overseas Touring.....	15
by Paul F. Opp	
What the Member Colleges Are Doing.....	17
Directory of Officers and Chapters.....	46

### COVER:

*"The World of Carl Sandburg," directed by J. J. Whitehead, Baldwin College, Tifton, Georgia. Tom McKinney, guitarist. From the left, David Perry, Larry Bentley, Diane Sirmans and Patrick Gibson.*

Dr. Paul F. Opp, Grand Business Manager  
Box 347, Fairmont, West Virginia  
Address Communications to Business Manager





Cast of "The Fantasticks," Bill Hanks, director. The truck was a gift to the Fairmont State College Theatre by Overall Co. BELOW: The Von Trapp family in "The Sound of Music," Summer Tent Theatre, Fairmont College, Fairmont, W. Virginia. At RIGHT: Mary Frances Sellers, Suzanne Waddell, Gerald Overman, Karen [unclear], and Fred Miller in "The Imaginary Invalid," directed by Bill Hanks; set design by James Brooks, Fairmont College.





# A SUMMER TENT THEATRE

IN 1961, a program of summer theatre was organized at Fairmont State College through the efforts of Miss Jo Ann Lough, and two productions were staged. The Fairmont State College Drama Department provided some of the directing and acting talent, but volunteers from the community were invited to participate and the summer theatre program operated under the name of Town and Gown Players. Soon four summer productions were on the program and three years ago, while the administration building that housed the theatre was under reconstruction, a large circus-style tent (stripes and all) was secured to house the summer theatre, staging most of the plays arena style. The valiant old tent has been in use every summer and has added much to the success of the productions. The coolness of the evening hours and the airiness and informality of the tent have served to compete favorably with an air-conditioned setting.

Outside help with the directing has been welcomed and members of the theatre staff of the University of Pittsburgh, Davis Elkins College, and Little Theatre Cleveland have annually directed one or more of the plays. A director from Cleveland took over the successful musical, "The Sound of Music," this past summer. The other three shows were "The Fantastics," "The Sound of Music," and "Maybe Tuesday." During the celebration of the State of West Virginia,

the productions of the State College Town and Gown Players received nationwide publicity along with the State-sponsored Show boat, The Rhododendron, and production of Kermit Hunter's "Honey in the Rock," the state historical drama. Prof. L. A. Wallman, chairman of the Speech and Drama Department, served as chairman of the State Showboat Committee.

This past summer, Mr. Wallman announced that the damages wrought to the tent by violent wind and hailstorms were so serious that it would be the last season of summer tent theatre on the campus of Fairmont State College, and that the public would likely welcome summer productions in the new modern theatre, now nearing completion. The community and civic leadership of Fairmont evidently thought differently about the matter, and on the evening of the final production of "The Sound of Music," the chairman of a committee, headed by Dr. Delbert Smith, presented Prof. Wallman with a substantial check, and he was informed that it was a down-payment on a new circus tent and that the remainder needed to complete purchase in full was rapidly being subscribed. The prospects are that come another season, a new tent will be pitched for summer theatre on campus near the modern library building that provides adequate housing for make-up rooms and dressing rooms only a step away from the stage.





*The Sigma Kappa Cast, Charter Group, California Western University, June, 1965. Front row: Cassia Besson, Bob Wiley, Lenja Polifka, Suzanne Burrall, Jon Scherer, Karen Lindsey, Bill Brack, Penny Tootle, Lynne Brewster, Gay Garland. Second row: Donald Barbe, director; Stu Shaffer, Ron Ray, Tom Huse, Barry Bostwick, Jim Stiles, Myron Insko, Burlant Belant. Third row: Paul Graul, Karen Groening, Sheila Duffy, Katie Brand, Sylvia Keim, Dagmar Krause, Debbie Dawson.*

by JAMES STILES, Sigma Kappa

## CALIFORNIA WESTERN HAS NEW CHAPTER

CALIFORNIA Western University at San Diego is among the colleges and universities recently receiving charters in this national honor society in dramatics since the publication of the 1964 Playbill. Other notable colleges, with an enrollment of two to four thousand students, receiving charters this year were Louisiana State University at New Orleans, Xavier University, Cincinnati, Ohio; Austin Peay State College, Tennessee, and Pan American College, Texas.

California Western University is a comparative newcomer to the list of institutions of university rank, having been chartered in 1952 with departments of liberal

arts, business, and law. The university has an endowment of one million, a physical plant valued at three million, and a campus of 143 acres. The first degrees were conferred in 1953. The department of theatre in the Fine Arts Division has made outstanding growth under the chairmanship of Prof. Donald Barbe. Prof. Barbe was faculty advisor of the chapter at Westminster College, New Wilmington, Pennsylvania, and director of the college theatre before taking the position at California Western. He has his Master of Arts degree in theatre from the University of Michigan, and has directed college and little theatres in Ohio and Pennsylvania.



A PRINCIPLE which has helped guide the recent play productions at State College, Mayville, North Dakota, is this: audience accommodations should contribute uniquely to the playgoing experience. Some of MSC's practices in attempting to carry out this principle are described here.

To help evoke an auditorium atmosphere that is sensorily stimulating, our new auditorium seats have been upholstered in gay hues. Moreover, in patchwork-quilt fashion each small block of adjacent seats is upholstered in a hue different from that of its bordering blocks of seats. However, only a cheerless neutral color could be provided for seat *backs*. This is unfortunate, since the back of the seats is the part that the entering-audience sees first.

For most of MSC's shows intended to provoke laughter, our ushers are garbed in bright colors and are especially cordial and animated. For serious plays, our ushers are clad in sober colors and are more reserved.

For intermissions which occur simultaneously with a brief passage of time-within-the-play's-action: 1) Appropriate recorded mood-music is played throughout all of intermission time. 2) The same music which is played in the auditorium is played simultaneously in the lobby. 3) This music begins and ends with the same selection. We thereby respectively attempt to: 1) fill those intermissions with play-related material, 2) blend returning lobby-users back into the auditorium, and 3) end those intermissions by reminding audience members of the music with which the intermissions began. We thus try to evoke sensory and intellectual responses proper for a *brief* passage of dramatic time. However, for intermissions which occur simultaneously with a *lengthy* passage of time-within-the-play's-action, no intermission music at all is used, thus allowing for an appropriate comparative severance between play and audience. Appropriate recorded music usually is played, though, while our audiences exit after curtain call. And after each performance the particular show's mood music is played in our audience coffee-and-smoking area, to which place interested audience members are invited (by way of a program note) to meet the actors, who report there right after curtain call. By the way, intermission coffee, access to which is made handy, is free—an intended boost for drama department goodwill as well as playgoer physical-stimulation.

More specifically, as concerns audience-accommodations practice for some of MSC's recent plays, for "Darkness At Noon," one of our winter plays, auditorium temperature (which for *comedies* is usually a bit higher than normal) was somewhat lowered, in an attempt to slightly disturb audience-comfort. By this, we tried to further our idea of "Darkness" by in part leading the audience to sensorily experience qualities similar to apparent qualities of contemporary communistic existence (at least as seen in "Darkness")—uneasiness, harshness.

For "No Time For Sergeants," usherettes were garbed in bright party dresses whose neck-line and hem-line were somewhat daring—an attempt to evoke an approximate sensory equivalent of the play's apparent flamboyant, physically-energetic quality. Further, in this attempt, all audience-area floor surfaces, ordinarily dull-finished, were freshly waxed and buffed bright for each performance.

For "The Miracle Worker," auditorium and lobby lights were at just "½" during pre-play and intermission

## Appropriate Audience Accommodations

times. These lights were at "full" only during audience-exit-time after curtain call. Since the brighter the lights the greater their perceiver's nerve activity, we thereby attempted to construct an audience sensory experience which broadly paralleled Helen Keller's *linguistic* experience in the play—a movement from comparative stupor to intelligent activity. To assist in evoking from audience members a sensory-intellectual equivalent of Helen's *blindness*, we did this: At first-curtain-time, auditorium lights dimmed down only to "¼". Then, at the end of Scene One—at which moment it is discovered that Helen is blind—auditorium lights snapped off, simultaneously with stage lights. Too, since Helen could not hear, we played no mood-music at all.

Surely central in meaningful play production are visually and vocally projective actors who convincingly think and feel as their assigned play-character. To these, a significant addition seems provided by appropriate stimuli from audience-areas and audience accommodations.



AT LEFT: Tom Brown and Myron Gudmonson in "No Time for Sergeants," Mayville (N. D.) State College, directed by Arlan Rahlf. RIGHT: Ron Steinke in "Darkness at Noon," directed by Arlan Rahlf, Mayville State College.



*Mary Schwartz and John D. Check as George and Lilly Pepper in "The Red Peppers" by Noel Coward, Edinboro (Pa.) State College, Dorothy Clifford, director, toured northwestern Pennsylvania.*



by DR. DOROTHY CLIFFORD,  
*Collegiate Players Director, Edinboro State*

## DRAMA WORKSHOP IN A SUMMER CAMP

A MAJOR problem for the drama program in a liberal arts college or in an extra-curricular situation is the finding of enough time to pursue excellence with the students. The pressures of performances, the demands of other courses, the general business of keeping up from day to day, do not allow for the introspection and contemplation necessary to develop a philosophy of acting or to investigate a theory of aesthetics in theatre.

A possible solution to this dilemma presented itself to the Collegiate Players of Edinboro State College this past summer. The president of the organization had served on the program staff of a camp for retarded children for three years. He knew that each year some volunteer group lived at the camp for a week before coming to help get the grounds and buildings ready for the students. He proposed that the Players volunteer to do this and in turn have a week of concentrated drama seminars under the supervision of their director. The response from the Players was overwhelming, and project was under way.

After the original volunteer group was reduced through summer jobs, summer school and sudden trips to fascinating places, some of the Collegiate Players and their director, Dr. Dorothy Clifford, left for camp. They took bedding, old clothes for working, bug repellant and flashlights; the instruction sheet ended with "If you can think of anything else . . . bring it!"

Mornings were spent working on the camp buildings and grounds. Rain had been predicted for the week so all nice weather was utilized for cutting brush, clearing trails, removing shutters and replacing screens on cabins, and installing playground apparatus that had been stored during the winter. Rainy days were used to repaint the kitchen and inventory all equipment and food service. We were glad that theatre people can do anything.

Afternoons and evenings were devoted to acting lessons. The director asked the students of the work-party which area of theatre they wished to concentrate on, and that was their choice. Acting is the only theatre course not included in the drama curriculum at the college. Dr. Clifford reminded them that no one can be taught to act in one week, but that they could be taught "to start thinking about acting."

The cost to the volunteers was minimal; they paid for their food supplies and a small fee for the seminar. Four of them were to be employed on the camp staff for the summer and were doubly interested in getting the place ready. Collegiate Players had a wonderful week working and learning together in a comfortable summer camp. They have received warm expressions of thanks from the camp director and her staff for the tasks accomplished, and plans are being laid to make this an annual project.



Scene from "King Lear," Southwest Texas State College, San Marcos; James G. Barton, director; Harold Tedford, technical director; costumes by Beverly Whitaker.



Front of Loft Theatre, Montana State University.



Lobby of Loft Theatre, Montana State University.



View of house, looking from acting area, Loft Theatre.

by EDWARD J. THOMPSON,  
Gamma Omega,  
Montana State, Bozeman

# SUMMER THEATRE IN MONTANA

DURING the past few years, there has been a phenomenal growth in the number of community theatre projects around the country. Until recently, Bozeman's summer theatre program was a small arena theatre with all the seating done on the stage of the Montana State College Theatre. (This year M.S.C. has been renamed Montana State University.) Four years ago, when Jean Kerr's "Critic's Choice," a new group, The Loft Theatre, sponsored by the local chapter of Alpha Psi Omega, opened in Bozeman. Beginning in 1962, four plays have been presented each summer. That first season each show ran eight nights (Wednesday through Saturday for two consecutive weeks). Due to public demand, the last three seasons have seen an increase to ten performances of each production.

The Loft Theatre has provided a great diversity in its program, with a variety of shows each summer, including comedy, mystery, drama, farce, presentational, musical, melodrama and absurd. This year's season includes: "See How They Run," "The Father," "Oh Dad, Poor Dad, Mama's Hung You in the Closet and I'm Feelin' So Sad," and "Everybody Loves Opal." The cast and crews are completely open to the community, and many housewives, businessmen, teachers and students have taken part. Most of the actual construction work is done by interested high school and college students. It is this volunteer interest which makes the organization go. However, the theatre does require some full-time workers. The director (Joe Fitch) and associate director (Ben Tone) are faculty members of the University Theatre Arts Department. In addition, the Loft hires a technical director, business manager and three technical assistants. These are usually local high school and college students.

The Loft Theatre, as its name implies, is located in the loft of an old barn. (The first floor has been turned

(Continued on opposite page)

THE 1965 PLAYBILL



into a bookstore by the owner, Miss Marguerite Kirk, who leases the theatre space to the Gamma Omega Cast.) The rustic setting is maintained and emphasized by covering much of the wall space with advertising posters steamed off the walls of the old Bozeman Opera House. Many of these posters date as far back as the 1890's. The productions, however, are far from rustic, and have received favorable notices from as far away as the Theatre Editor of *The Hartford (Conn.) Times*.

The theatre is arranged in three-quarter arena style, with a playing area 12' x 24'. The fourth side is used for scene construction, behind which is a small area for props, quick costume changes and actors waiting to go on stage. The lighting, although hung from the rafters, is modern, using P.A.R. fixtures run from a portable switchboard specially designed for The Loft Theatre by Ken Vannice, a student at Montana State University.

Although officially sponsored by the drama fraternity, the theatre also receives some financial aid from other sources. Some of the Summer School activity fee goes to the theatre, for which students are admitted at reduced prices, and a small amount of funds are allocated through the University English Department, depending on the current wishes of the administration. In addition, some of the businessmen of the community give donations in the form of advertising. By far the largest

source of revenue, however, is from admissions, making the theatre practically self-supporting.

The Loft Theatre is a non-profit organization, but every summer it has come out far enough ahead to make improvements in the plant (such as carpets in the lobby and a new ventilation system), and still have enough surplus to begin operations the next year without having to depend on early donations.

The staff of The Loft Theatre has encountered several obstacles in the technical end of production, but through the combination of hard work and ingenuity they were overcome. One of the most serious problems is the shortage of time. Each show rehearses for three, or not more than four, weeks, and the set for the next show is being built while the preceding show is in performance. Because of this schedule, there are only two days in which to strike the set of one show and set up for the next. This means a long session Saturday nights, at which time the set must be entirely put up. This is followed by a rehearsal Sunday afternoon and dress rehearsals Sunday and Monday evenings, while finishing touches are being made on the set.

The Loft Theatre is one example of how a university theatre can remain active during the summer months, and how it can serve the dramatic arts 12 months of the year.



The Arrowhead Players of Arkansas State College, State College, Arkansas, won a superior rating in the State Drama Festival sponsored by the Arkansas State Speech Association. The play presented was "The Octogenerian," written by Joe V. Graber, who became a member of Kappa Rho cast while a student at Georgetown College, Kentucky. Mr. David Ritchey who directed the contest play also is a member of the Georgetown chapter. Presently, Mr. Ritchey is director of the Arkansas State College Theatre. Art Stewart played the octogenerian in the original play. This was the first time Arkansas State has won this high rating in the State Festival.

THE 1965 PLAYBILL

*In a scene from the award-winning*

*"Octogenerian," are Lambda*

*Lambdas Bill Henderson, Lenore*

*Bowers, Joedi Wyllie, Linda Wyatt,*

*Art Stewart, Jan Watkins, Cora*

*Drake, Jo Anne Mason, Jan Harrell,*

*Bill Shaw, Jim McCain, Gene*

*Worthen, and Dennis Evans;*

*directed by David Ritchey.*



## A SUMMER THEATRE TOUR

A summer theatre tour that in 19 days and 5,000 miles of travel provides a cross-section and survey of American theatre from grass-roots to Broadway is conducted annually by Texas Technological College, Lubbock, Texas. This tour is a summer course in the Speech Department, called American Theatre Tour and carries three hours' credit. Travel is by roomy, air-conditioned bus with lectures enroute concerning new developments in American theatre and discussion of current plays. There are many things on the tour that many drama experts have not seen nor experienced, such as performances on a professional arena stage in the national capitol, a visit to the renowned Folger Shakespeare Library, summer musicals by municipal groups, one of the state historical pageant dramas in the Southern mountains, the Tyrone Guthrie Company in Minneapolis, summer stock in up-state New York, the famous Stratford Festival in Ontario, Canada, and Shakespeare again at Stratford, Connecticut . . . all on one tour. The course is limited to 25 taking the course for credit, with ten additional people accepted who wish to take

the course not for credit. If one considers that the cost includes tuition, transportation, hotel rooms and tickets to all scheduled performances, the standard fee is remarkably low. Not included are meals and incidentals, and this is true of any college course.

The theatre collections of great universities, museums and libraries are visited; and in theatre supply centers like New York City, arrangements are made to visit stage and lighting equipment companies, costume houses and scene studios. Six outstanding Broadway and off-Broadway shows are included in the 5-day stop in New York. Matters like visits backstage and interviews with professional theatre people are arranged before the beginning of the tour. The course is naturally highly concentrated, but an occasional break from normal routine is taken for an evening of relaxation and recapitulation in some of the colorful resort centers enroute like Hot Springs, Arkansas. On returning to Lubbock, most will agree that their grasp of the great institution of American Theatre, has been considerably broadened.

*"Jack and the Beanstalk," directed by Josephine Moran. Settings designed and executed by Jim Palmer, Texas College of Arts and Industries. Loucy Whittington, Jared Lott, Connie Lawrence as Jack, and Debby Parrish are pictured.*







Nicholls Players' third-quarter round production of "Diary of Anne Frank" at Nicholls State College, Thibodaux, Louisiana. Mel Berry, director.

## STAGING "TWO GENTS" IN MODERN DRESS

A NUMBER of years ago, the PLAYBILL carried several articles showing how "The Taming of the Shrew" could be staged in modern dress with Western costumes or in a collegiate atmosphere. Now we have a production of one of Shakespeare's comedies, "The Two Gentlemen of Verona," in modern collegiate style with a hootenanny opening. Aside from a few changes in dialogue, the script was that of the Laurel edition of the play. Shakespeare's Jews became Communists, for example, and some obscure phrases and allusions became modern and topical. The set was a simple, three-level thrust stage with the audience on three sides. A covered upper stage, four two-by-two cubes, and virtually no scenery reduced the setting to the Elizabethan essentials. In the last scene Valentine carried on stage some fishing tackle and an artificial grass rug to provide a cushion for Sylvia's escape from the attempted assault of Proteus.

Costumes, strictly contemporary, were those of a college town for the scenes in Verona and of a Southern resort for those in Milan. Sylvia's father, the Duke, for instance, was dressed as a Southern planter and was attended by two black-clad toughs, bodyguards, wearing panama hats. Valentine and Proteus, "the two gents," were characterized as graduating seniors, who wore letter-sweaters in the opening scenes, and later on wore sports clothes appropriate to a southern trip. The outlaws became half-guerrillas, half-thugs, dressed in all sorts of appropriate garments, and carrying shotguns, pistols and tommy-guns rather than bows and swords. Launce and Speed were freshmen, complete with pots; and Crab, Launce's dog, was a large student dressed in a dog suit with the amusing business possible with an intelligent dog.

Everyone enjoyed staging the opening scene. A half hour before curtain time, the stage was alive with activity, centered around two guitar players with marvelous tenor voices, who later, as the minstrels for "Who Is Sylvia," performed a dimly-lighted sentimental and genuinely moving scene. The guitarists provided a rock and roll pre-curtain concert, and were joined onstage by the whole cast and crew, very informally drifting in and out as if it were a fraternity party, the light men making fake adjustments, the make-up man working on a misplaced eyebrow, the director with a clipboard issuing orders, and so on. At curtain time, four men unobtrusively built a bar out of the prop cubes, a bartender and waitress entered with glasses, Valentine and Proteus, sauntered down the center aisle onto the stage, ordered drinks at the bar, and with the hub-bub still going on, began the dialogue of the first scene. As it progressed, the guitar concert ended, the mob drifted away one by one, and suddenly the audience was watching the first scene. It worked out beautifully!

We burlesqued more and more as the play progressed. Proteus became a villain of melodrama vintage, and the outlaws were terrible bumblers. The Duke's bodyguards were Capone-like thugs who extinguished cigars in their palms and sharpened their fingernails with switchblade knives. The last scene, in which Valentine pops out from behind a bush to save Sylvia, was played with all the corny melodrama it contains. The actors paced the show so nicely that the audience, caught by the opening gambit, were in uproarious laughter at the end and gave the play a standing ovation. Shakespeare? Perhaps not, but a very successful and very entertaining show!

# The First American Greek Festival

THIS year marks the entry of an American Greek Drama Festival into the field of summer drama festivals. The first Greek Festival was sponsored by the theatre department of the Division of Fine Arts of California Western University. The city of San Diego, seat of this university, is already the home of one of the recognized Shakespeare Festivals represented in the annual staging of a series of Shakespearean plays presented in a recreation of an Elizabethan Playhouse in Balboa Park. San Diego and the Southern California area have approved the venture, expressing the hope that this Greek Festival will become an annual event. The superb acting, the beauty of the pageantry and the costumes earned the acclaim of critics and playgoers this summer, who readily acknowledged that the productions were a cultural success and that the staging of these great plays provided timeless appeal and could entertain and even deeply move a modern audience.

California Western University is uniquely blessed in having on its campus, not only the first, but also one of the best architectural examples of the Greek Theatre in the United States. The theatre was built in 1901 by the Theosophical Society of Katherine Tingley that once occupied the area that is now the university campus. The theatre is in a sylvan-like setting and commands a tree-laced view of the Pacific Ocean. It seats 1,500 and is almost acoustically perfect, something rare even for enclosed modern theatres. What could be more appropriate than to make good use of such an inspiring setting as this and turn back the pages of Greek literature to bring to life the comedies and tragedies of the great Greek dramatists, staging them authentically as once they were presented in ancient Greece? The full festival program covered a period of eight weeks; the first production, "Lysistrata," was presented on July 9th (seven performances in all), and the last performance of "Oedipus Rex" came on August 29th.

Donald L. Barbe, who was festival managing director and director of "Oedipus Rex" by Sophocles, is the director of the university theatre at California Western. Burtant L. Belant was the technical director. Ron Ray was the director of "Lysistrata" by Aristophanes, and Stanley S. Newcomb directed "Hippolytus" by Euripides. Adding to the variety of the summer festival was a production of the mask, "Beauty and the Shepherd" by the San Diego Ballet, and the showing of the motion picture of "Antigone" that was written and directed by George Tzavellas.

Summing up his impressions of the festival season, Bob Lebo, *Sentinel* drama critic stated: "The combination of the great Greek plays with the ideal setting of California Western's Greek theatre makes for an altogether entertaining evening for anyone." Greece is noted for a sunny climate which is also true of Southern California, so this festival, featuring the Greek plays, may prosper as strikingly as the festivals featuring Shakespeare at Stratford, England; Stratford, Connecticut, and Stratford, Ontario.

Scene from "The Firstborn," directed by Eugene Jacobson, Moravian College.







Banquet scene from "Macbeth," Bayou Players, McNeese State College, Lake Charles, Louisiana, Margery Wilson, director; Elwood Williams, technical director.

by FRAN COOK

## KAROLE COSTUMES CHARACTERS

A YOUNG woman who is headed for a master's degree, or possibly a doctorate in theatre, is Miss Karole Buck of York College, York, Nebraska. Shakespeare might have been underrating the art of the needle when he put the words, "Go ply thy needle," on the lips of Bianca in "Taming of the Shrew"; Karole's skill with the needle, whether used by hand or operated by an electric motor, has provided the York College Theatre with an impressive array of costumes. The director of theatre at York College, Mr. Meredith Thom, is qualified to give leadership to Miss Buck's talents for he has a major in speech and art from Harding College and has a M.A. degree in speech and dramatics from the University of Arkansas. At present he is teaching art and theatre.

In the plays of the past season Miss Buck designed and made costumes in three special fields: Japanese, Greek and Elizabethan. Beginning with the first play of the year, "Teahouse of the August Moon," Karole made the colorful costumes that clothed the geisha girls and "natives" alike. From the gay kimonos of the first play, she moved to the sober, subdued mourning robes and classic Greek costumes of the second play, "The Trojan Women." Going to the other extreme in the "Taming of the Shrew," Karole's creativeness contributed greatly to the gaiety and glamour of the play. As costume mistress, Karole has used her ingenuity and talent to come up with some marvelous "Buck originals." It is also her ambition to do special study and research in Elizabethan costumes with illustrations and a thesis on the subject. As a result of her efforts last year, she was awarded a drama scholarship. The productions of last season on which she worked and produced excellent costumes in-

cluded the gay French dress for "The Miser" and Russian attire for "Arms and the Man."

With English and drama her main fields of interest, Karole has estimated that she has spent over three-hundred hours this year in designing, cutting, sewing, and altering costumes. This generous offering of her time and talent has contributed greatly to the success of the performances of last year and this year. Since she finished her work at York College this spring, the college or university theatre in which she continues her work will find in Karole a capable wardrobe mistress.

### FINALE

by RUBY KOCH, Newberry College Theatre

Seats once warm with laughter, form, response—now bare—request no more.

Players once intense with role—now shucked of d and paint—regain their selves but slow.

Lights once bright with amber spots, fresnels—now bl—emit still heat.

Set once striking panels, prints, a home—now sh board by board away—dismantled under hands.

Stage once filled with theme and sweat and s—now dead—supports a muslin scrap, a crooked

by PAUL F. OPP

## Playwriting Contest Announcement

The Fourteenth Annual Collegiate Playwriting Contest, sponsored by Samuel French Inc., is again open for entries for full-length and short plays. The final entry date is May 6, 1966. This national contest is open to all college students and provides cash prizes for first and second place winners in each of the two classes of plays. Specially inscribed plaques are also awarded the colleges in which the winners are enrolled.

The judges for the 1965 contest were producer Claire Nichtern and director Alan Schneider, and Professors Mouzon Law of Boston University and Lee Marshall of Northwestern University. The winner of first prize, \$350.00, was Ralph S. Arzooonian of the State University of Iowa, and the winner of the \$200.00 first prize for the best short play was Lillian Lipman of the University of Washington. This play will also be published and leased for production by the contest sponsors. Kyle Lake of the State University of Iowa was awarded \$150.00 for winning both second prize in the long play competition, "A Night on Venus," and third prize for his short play, "See the Man Die." Michael Spengheim, University of California at Los Angeles, won second prize (\$100.00) with his entry, "The Human Condition," in the one-act play category. There were 211 entrants in all from 94 colleges. We suggest that our members interested in the Samuel French contest note the final date for entry in the 1966 contest and the address of the sponsor, 25 West 45th Street, New York, N. Y. 10036.

### Golden Apple at American University

The prize-winning musical comedy by poet John LaTouche was staged at American University, Washington, D. C., for the week of May 17-22. The play uses the Homeric Legends in a comedy about American life of the 1900's. This approach appealed to composer Jerome Moross and the play was first staged at the Phoenix Theatre in New York in 1953 where Walter Kerr called it "a bright new hit." After a limited run at the Phoenix it moved to Broadway to enjoy further success.

"The Golden Apple" may be considered historically important as American Musical Comedy. The script tells of the return of Ulysses after the Spanish American War. He comes home to his wife, Penelope, in a small town at the foot of Mount Olympus in the state of Washington. Trouble begins with a visit of a traveling salesman, Paris, who proves to be most attractive to the farmer's daughters of the small town. Featured in the cast of the American University Theatre production were Tom Baker as Hector, George Fisher as Paris, Donald Arrington as Menelaus, Yvonne Sabine as Penelope, and Dolores Brown as Helen.

### MICHIGAN ANNIVERSARY

Courses in Play Production began at the University of Michigan in the fall of 1915, and Prof. Richard Hollister directed a curricular production of "The Servant in the House," which officially began theatre productions by the Department of Speech. For the 1965-66 Fiftieth Anniversary Season, "Henry IV," Parts I, II and III will be presented in repertory, beginning November 17. The next play of the University of Michigan Players will be "The Days Between" by Robert Anderson, February 2-5; followed by a premiere production, February 16-19. An Opera in cooperation with the School of Music will be staged March 16-19, and the Paul Green American Version of Peer Gynt will close the season April 6-9. By arrangement with the American Playwrights Theatre, the production of the Anderson play will be prior to a Broadway production.

THE 1965 PLAYBILL



## 1965 REPORT OF AETA TOURING COMMITTEE

### Colleges Active in Overseas Touring



ABOVE: The American Collegiate Players, Harding College, Searcy, Arkansas, "With a Review of the Theatre '65," toured the Fifth Army. They will tour overseas in 1966.  
BELOW: Erlene Laney in "Antigone," Harding College, Ben Holland, director.



THE recent report of the touring American Educational Theatre Assoc. the universities and colleges of America been active in overseas touring of 150,000 groups traveled over 150,000 miles and musical comedies in service to 102 military installations to east Atlantic and Europe. played four to eight in the past year. During audience week, took to eight our past week. land "Destry Rides" in the West took "A League of Gentlemen" Pacific" to our College Delaware. Kate," the State of Delaware represented. Our tour followed in March. The following month, touring PACIFIC. Our tour of the Pacific, "Leaves of Grass" York, "Leaves of Grass" Edinboro, Pa. A tour record of the route and arrangements will be published by the AETA Touring Committee.



*Scene from Lerner and Loewe's "Camelot" with Milton Reed, Jim Ed Williams, Max Hager, Julie Huddleston, and Gil Clark, Harding College, Searcy, Arkansas; Ben Holland, director.*



# What member colleges are doing...

## CAST REPORTS

### KAPPA PHI

Texas College of Arts and Ind.

Kingsville, Tex.

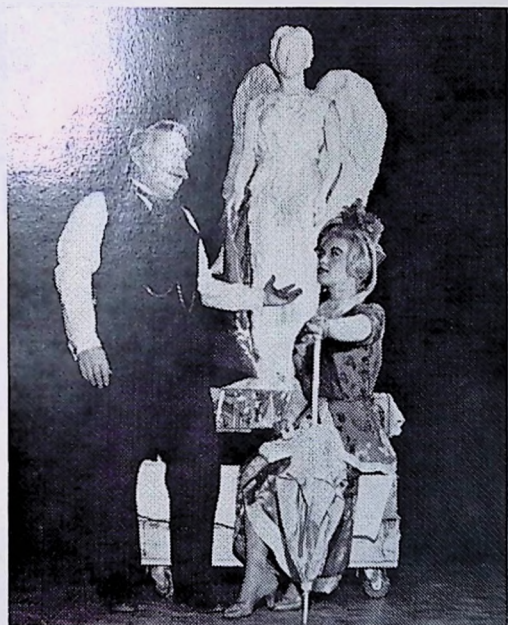
The Footlights Club opened the season with "MacBeth," directed by Dr. Albert E. Johnson, chairman of the Speech Dept. Jim Palmer directed and designed "Look Homeward Angel." Mrs. Josephine Moran directed the annual children's play, "Jack and the Beanstalk," with settings by Mr. Palmer. Dr. Johnson was the general director of the annual Lantana production and also wrote the script; Mr. Palmer directed the script and executed the sets. In May the acting and directing classes, taught by Dr. Johnson and Mr. Palmer staged eight one-act plays in the Little Theatre. At the annual awards banquet in May, trophies for best actor and actress were awarded to Xavier Barrera and Neida Estringel, and to Jane Backus and Kirby Sharp for best supporting roles. Vincent and Gabriel Garcia tied as best crew member. For the summer production was staged, "My Sister Eileen," directed by Dr. Johnson. The set was designed by visiting speech, Jack Ashford.

### NU CHI

Northeastern University

Boston, Mass.

Four major productions constituted the 64-65 theatre season at Northeastern University. Eugene J. Blackman directed "Twelfth Night" and the musical, "Carousel," and Mort Kaplan directed "Bus Stop" and "Come Blow Your Horn." The studio productions of short plays were "The Lesson," "The Chairs," "Auto da Fe," and "The Purification." Mort Kaplan directed An Evening of Anton Chekov and Linda DeVries directed a Showcase of New Scripts. Mr. Blackman directed "The World of Carl Sandburg" for Readers' Theatre. Prof. Blackman will also direct the opening number for the new theatre facility with a newly translated version of "The Imaginary Invalid." Other plays selected for the new season are "Born Yesterday," "All My Sons," "Glass Menagerie," "A Taste of Honey," and two children's theatre productions directed by Bernice Mendelsohn. Lawrence Blumsack will return as technical director. Cast officers were Glenn Ryan, Dick Rizzo, Sandra DeVellis, and Anagret Reimer.



"Look Homeward Angel," Texas College of Arts & Industries, Kingsville, Texas. Designed and directed by Jim Palmer. Kirby Sharp as W. O. Gant and Marge Robinson as Madame Elizabeth.



"Macbeth," Texas College of Arts & Industries. Directed by Dr. Albert E. Johnson; sets designed by Jim Palmer. Harrison Ewing as Macbeth and Neida Estringel as Lady Macbeth.





Connie Lawrence as Jack; Lucy Whittington as the Giant's wife; and Jared Lott as the Giant in "Jack and the Beanstalk." Texas College of Arts & Industries, Kingsville, Texas. Directed by Josephine Moran; settings designed and executed by Jim Palmer.

#### BETA OMICRON

California State College

California, Pa.

The College Players production of "John Brown's Body" was staged by Roger C. Emelson. Roles that are usually narrated were acted out on a series of ramps and platforms, while the speaking and singing groups sat to one side of the stage. The choral direction was by Norma Langham, with music direction by William Dovenspike. Miss Langham's original children's play, "Magic in the Sky," played for over 4,000 area grade school children. Mr. Emelson directed the comedies, "Take Her, She's Mine" and "Come Blow Your Horn." The settings for the spring play, "The Miracle Worker," were designed by student Rick Anderson. "Amahl and the Night Visitors" was a Christmas presentation. Henrietta Wood of the Fine Arts Department designed the costumes and masks for the Commedia del Arte production of "Pinocchio," directed by Norma Langham. The Players will have a new sound system in the theatre this fall. The theatre staff is composed of Mrs. Marian Weaver, Roger C. Emelson and Norma Langham.

#### LAMBDA GAMMA

Middle Tennessee State University

Murfreesboro, Tenn.

The year 1964-65 has been a momentous one for our University Theatre. We offered a major in Theatre for the first time, and dedicated a new theatre with an arena playhouse and a proscenium stage. We do four major productions a year one of which is usually an opera done with the music department. However, this past year we did the musical "Finian's Rainbow." Our other productions were "The Importance of Being Earnest" in the arena theatre, and "The Visit" and "My Three Angels" in our main theatre. Dorethe Tucker is director of the University Theatre. Alpha Psi Omega officers were Carlton Sivells, president, and Martha Campbell, secretary.

#### MU PSI

Hofstra University

Hempstead, N. Y.

The Hofstra University Theatre enjoyed a remarkable season of excellent productions. William Storrer directed "The Rivals" and "Oh Dad, Poor Dad." James Van Wert, acting chairman of the Drama Department, directed "An Enemy of the People" and "Lysistrata." Dr. Bernard Beckerman directed "Blood Wedding" and "The Taming of the Shrew." The one-act plays were "Please, Dear People . . ." and "Wave Goodbye to the Nice Man." Alpha Psi Omega members sponsored a program for all freshmen in the university, conducted several guided tours of the Playhouse facilities and sold refreshments at Playhouse functions. We also produced two one-act plays, written by Hofstra students as part of the Contemporary Arts Festival. Chapter president was James Waterman, secretary, Gene Snyder.

#### DELTA EPSILON

North Central College

Naperville, Ill.

The Theatre Guild of North Central has been extremely busy this year. We opened the season with "Pure as the Driven Snow," an old-fashioned melodrama, followed by Shakespeare's "Much Ado About Nothing" and Victor Herbert's "The Red Mill." For the final play, Ibsen's "Enemy of the People" was chosen. We were honored to have as guest players, the Broadway actor James Daly and his wife, Hope Newell. It was an exciting experience for all of us to work with professionals. Other activities included: running a refreshment stand at all events held in the auditorium, renovating the scene shop, touring the area with Christopher Fry's "Boy with a Cart," sponsoring a children's play as a benefit for the Naperville Library League, and performing for organizations such as the Faculty Wives and the Campus Church Community. Next year's plans include "Life with Father," "Oedipus Rex," "Inherit the Wind," and possibly a new musical.



## DELTA OMICRON

Doane College

Crete, Neb.

It is a tradition for the Doane Players to produce a skit during September Orientation Week. This year's skit was "The Greenhorn Convention." Max Frish's "The Firebugs," directed by Jack Prouse, was the first major production. As a novel approach, Mr. Prouse staged "The Importance of Being Earnest" arena style for the winter production. The annual Fine Arts Festival was featured with the final play, Aristophanes' "The Birds," done in Greek costumes and bird masks in the Cassel Outdoor Theatre. Miss Alvina Krause was guest critic, presenting workshops and lectures. We look forward to productions of "Glass Menagerie," "Taming of the Shrew," and an original play by Cathy Collett, "Niobe," in the new season. Richard D. Long was president of Alpha Psi Omega.

## PI IOTA

Southern Oregon College

Ashland, Ore.

Southern Oregon College Theatre presented "The Heiress," "Ah Wilderness," and "Aladdin" during the past season. Our theatre department assisted the SOC Music Department in a production of "Pajama Game." We gave a reading theatre presentation of "The Apollo of Bellac" and a presentation of "The Sandbox" for the Fine Arts Festival. Dan Hays and several Alpha Psi members are part of the Shakespeare Apprentice Workshop which is sponsored by Southern Oregon College and the Oregon Shakespearean Festival. Dr. Dorothy Stolp is director.

## ZETA ETA

University of Pittsburgh

Pittsburgh, Pa.

The University of Pittsburgh Players and University Theatre had a full season of productions that represented a wide variety of dramatic fare and styles. Prof. Ralph G. Allen directed "Measure for

Measure," William H. Kingsley directed "Reynard the Fox," Wandell Henshaw directed "Playboy of the Western World," William Coleman directed "Wazzeck" by George Buchner, and Forrest Sears directed "The Miser." Wagon and revolving stages were much in evidence this year. For "Measure for Measure," a pie-shaped revolving stage was used with two sections which collided with one another giving the play a Brechtian quality. "Reynard the Fox" was our children's theatre offering and is one of the few plays for children that does not have an ending that accords with poetic justice. Zeta Eta officers were James Berry and Andrea Chapman.

## RHO UPSILON

Kutztown State College

Kutztown, Pa.

The College Theatre, Arthur H. Sinclair, director, staged five major productions: "Best Man," "Amphitryon 38," "The Cave Dwellers," "The Crucible," and "The Cocktail Party." The one-act plays were "Portrait of a Madonna" and "Private Lives II." A Repertory Summer Theatre presented two plays in central staging. Chapter officers were Barbara Liebel and Danielle Rambo.

## GAMMA THETA

Lenoir Rhyne College

Hickory, N. C.

The Playmakers will assist with the celebration of the 75th Anniversary of Lenoir-Rhyne College this season, producing an original historical religious drama. The major plays of last season, "See How They Run," "J. B.," and "A Midsummer Night's Dream," were directed by Sam Baker. Mr. Richard C. Zimmermann will direct the plays of the coming season: "Arsenic and Old Lace," "The Importance of Being Earnest," and "The Crucible." Past season drama awards were won by Conrad Wessel, III, Steven Duncan, Savannah Scarborough, and Dorothy Stinet. The chapter officers were Mike Olsen and Permella Harkey. New officers will be Conrad Wessel, III and Ronald Eckard.

Scene from "Look Homeward, Angel," designed and directed by Jim Palmer. Texas College of Arts & Industries, Greenville, Texas.







(Clockwise) "Carnival," "Twelfth Night," and "Bus Stop," directed by Eugene Blackman; "Monkeyshines," an original, directed by Linda DeVries; "On the Harmfulness of Tobacco," "Come Blow Your Horn," and "The Lesson," directed by Mort Kaplan. (Insert) A scene from "Carnival," Northwestern University, Boston.



## ZETA CHI

Union College

Barboursville, Ky.

Mr. Charles Billings, director of the Union College Theatre, received the '65 Senior Class Award as the faculty member contributing outstanding service to the college. The plays directed by him this season were "Visit to a Small Planet," "Importance of Being Earnest" and "All the Way Home." The short plays were "No Exit," "Second Shepherd's Play" and a student-written play, "The Spider," by Henry Zingg. Drama awards were made on Honors Day to Shirley Doane, Best Actress; William Sawyer, Best Actor; and William Sawyer, Service Award. Alpha Psi Omega sponsored a High School Drama Festival. Zeta Chi president was Toni Lynn Fuller.

## KAPPA RHO

Georgetown College

Georgetown, Ky.

The Maskrafters opened the season in October with "Tea-house of the August Moon." Other major plays were "Antigone" and "Twelfth Night," all directed by Mrs. Lore Johnson. One-act plays, directed by students, were "A Sunny Morning," "Christmas Shopping," "Zoo Story," and "The Boor." The Variety Show, sponsored yearly by the Maskrafters, was a great success. The theme of the show was "Brave New Georgetown," with acts pertaining to the future life on Georgetown Campus. The annual dramatic awards were given to Bill Stakelin, Linda Emerson, Don Estes, Jo Ann Schmitt, Jon Fredrick, and Nita Bissell. New Alpha Psi Omega members are Susan Hammaker, Claude Guyton, Carole Romer, Gerald Ratliff, and Bill Staklin. Cast officers were Phyllis Collins, president; Katy Cooney, vice-president; Jo Ann Schmitt, secretary, and Dave Tindall, treasurer.

## NU UPSILON

Kearney College

Kearney, Neb.

The theatre of Kearney State College had a successful season with the following productions: "Romeo and Juliet," "The Man of Chaillot," "Dark of the Moon," "Thurber Country," and "The Glass Menagerie." A platform stage and a minimalist style of scenery was used for all these plays. For full-length productions, the Theatre Department of Kearney State College was involved in two sets of student one-act plays that included: "The Old Lady Shows Her Medals," "No Exit," "The Last of My Solid Gold Watch," "Fumed Oak," and "A Sunny Morning." We used "Thurber Carnival" as a student-faculty show which was sponsored by Alpha Psi Omega. It proved to be a good venture and was a financial success. The 1965-66 season will include "The Time of your Life," "Harvey," "Medea," and "Inherit the Wind." The new cast president is Dwayne Ibsen.

## LAMBDA ALPHA

Blue Mountain College

Blue Mountain, Miss.

The Mountain Masqueraders, directed by Miss Pamela Moore, presented "Blithe Spirit," "A Majority of One," and "A Comedy of Errors." Sara Averitt and Siew Choo Poh directed an evening of one-act plays, "The Leader" and "The Sandbox." Miss Poh is our first international (Indonesian) speech major.

## SIGMA

Kansas Wesleyan University

Salina, Kans.

The first major show, "Checkerboard," was taken on tour, and 22 productions were given in the state of Kansas. Mrs. L. L. Carlisle was the director of this play and the two other long productions, "Journey's End" and "Escape." The student-directed short plays given during the year were "The Command Performance," "The Valiant," "The Lord's Will," and "Gone With the Wind, So to Speak." Six students qualified for Alpha Psi Omega. The cast officers were Susie Walker and Kent Chapman.

THE 1965 PLAYBILL



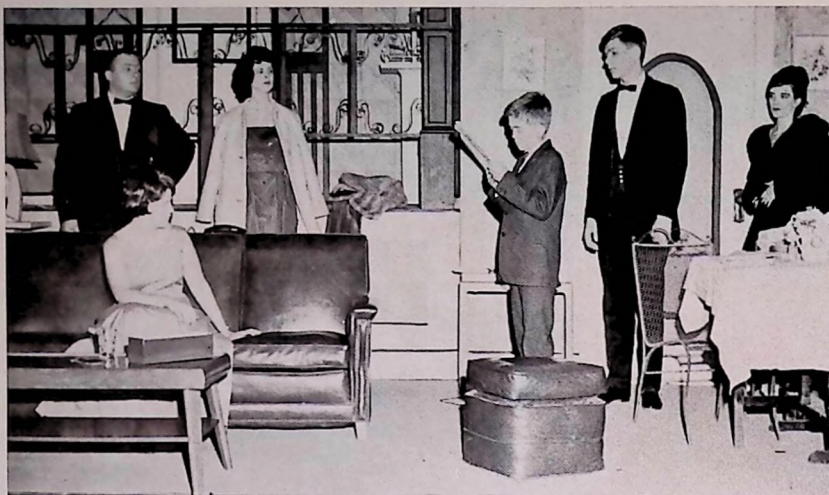
Scene from "Twelfth Night," directed by Lore Johnson, Georgetown College (Ky.). From the left, Jim Cook, Gerald Ratliff, Jo Ann Schmitt, Bill Stakelin, and Joe Don Estes at window.



Sandra Goodearl, Charles Billings and Shirley Doane in "No Exit," Union College, Barboursville, Kentucky.



Dwayne Ibsen, Sue Price and Dave Hensley in a scene from "King of Hearts," Kearney State College Theatre, Kearney, Nebraska.



Dan McLaughlin, Eddielea Roe, Doris Wilson, Danny Robertson, David Shestak, and Carolyn Enis in Ira Levin's "Critic's Choice," directed by Dr. R. E. Fulsom, Northwest Missouri State College.

#### KAPPA SIGMA

Northwest Mo. State College

Maryville, Mo.

The Acting Award for the year went to Carolyn Enis, and the chapter voted to bestow the technical award upon Eddielea Roe. Dr. R. E. Fulsom directed "Critic's Choice," and \$110.00 of the profits of this production were given to the student loan fund for speech and drama scholarships to be matched by the government on a ten to one basis. Other major productions of the season were "The Crucible," "Les Misantrophe," "Behold This Dreamer," and a night of one-act plays that included "The Chairs," "The Zoo Story," and "The Mouse-trap." During the year, a Reader's Theatre version of "The American Dame" by Philip C. Lewis was given. Cast secretary is Nick Erganian.

#### KAPPA GAMMA

Southwest Missouri State College

Springfield, Mo.

The major season included Folio Follies, "Look Homeward Angel," "Stop the World—I Want To Get Off," "The Bremmentown Musicians," a children's show which toured the Southwest Missouri area, and "Rhinceros," a rewarding experience in Theatre of the Absurd. A highlight of the season was an adaptation of "South Pacific," directed by Dr. Leslie Irene Coger for a 5-week USO tour of the Northeast Command. The show traveled to military bases in the Arctic Circle, presenting both "South Pacific" and a special variety show, Northeast Follies. The cast spent a sixth week in New York where they viewed a number of Broadway shows and had the opportunity to meet some of the stars. Southwest Mo. State College students under the direction of Dr. Coger presented an Interpreters Theatre program at the Southwest Theatre Conference and received recognition by being nominated for the National College Theatre Festival to be held in Washington, D. C. Chapter officers were Jan Northcutt (Outstanding Thespian of the Year), Helen Anderson, and Fred Homan; Jim Cermak, publicity.

#### BETA IOTA

Valparaiso University

Valparaiso, Ind.

Probably the most significant event in the past year was a week long visit by Provost Williams of St. Michael Cathedral, Coventry, England. Mr. Williams was here to probe possible dialogue between Valparaiso University and Coventry Cathedral in the area of religious drama. The idea was initiated a year earlier, when Dr. Kussrow of the department of speech and drama, and Dr. Scheimann of the philosophy department, visited Coventry. Major productions of the University Players

were "The Firebugs" and "Gypsy" directed by Dr. Fred Sitton. Richard Pick directed "Twelfth Night" and Dr. Vera T. Hahn directed "The Children's Hour." Newly elected cast officers for the year are Jan Mindach and Sherry Smith. Mr. Hans Conreid demonstrated great talent in a reading program at the university.

#### RHO ALPHA

Pfeiffer College

Misenheim, N. C.

Variety and uniqueness in staging marked the major productions of the Pfeiffer College Theatre. Director Ben Grubbs staged "Spoon River Anthology," "Oedipus Rex," directed by Bill Stock, was set on a modern plantation in the South with a chorus portrayed by tenant farmers. "The House of Bernarda Alba" was staged arena-style. "Down in the Valley" and "The Importance of Being Earnest" were done together as part of the Fine Arts Festival. Mr. Grubbs took his adaptation of "Spoon River Anthology" on a tour of six North Carolina colleges. Rho Alpha cast president was Robbie Flanagan.



Donna Drewes, Sharon Ervin, Joe Bowman, and Mary Alice Rose in leading roles of "Stop the World," directed by Jan Northcutt, Southwest Missouri State College.

THE 1965 PLAYBILL





Barbara Weatherford, David Embree, Jane Hays, Judy Martin, Sandra Harlett, and (seated) Judy Corley in "Royal Gambit" at Oakland City College, directed by Dr. Margaret McConnell Harper.

#### THETA NU

Oakland City College

Oakland City, Ind.

Our annual variety show, OMNIBUS '65, was entitled "Omni-vision" and took television as its theme. The show, directed by Dave Jones and Tom Rosenfeld, was a sell out. Dr. Margaret Earl Harper directed the major shows "Blithe Spirit" and "Royal Gambit." The one-act plays were student directed and were "If Girls Asked Boys for Dates," "Amicable Parting," and "A Cup of Tea." The chapter officers were Ron Kangas, Ann Straley, Ted Linton, and Barbara Weatherford. Faculty director of the college theatre for the coming season will be Mr. Alfred Williams.

#### NU OMEGA

Duquesne University

Pittsburgh, Pa.

The Red Masquers staged "Streetcar Named Desire," directed by Samuel S. Meli, and the opera, "The Bartered Bride," directed by William Hillier. The production of "Streetcar Named Desire" was held over for three extra performances because of the demand for tickets. A number of people had to be turned away the first time it was produced. The School of Music and the Duquesne Tamburitians assisted in staging "The Bartered Bride." The short plays of the season were "The Bald Soprano," "Under Milkwood," "Hope Is A Thing With Feathers," "A Tiny Closet," and "Fumed Oak." Mu Omega cast officers were Mariann Aland and Kathy Howard.

#### ETA PI

Mississippi State University

State College, Miss.

The year started with the Second Annual Mississippi State University High School Drama Festival on November 13 and 14, 1964. Five Mississippi High Schools participated and three came as observers. The M.S.U. Blackfriars Drama Society presented "All My Sons," by Arthur Miller, and "No Exit," by Jean-Paul Sartre, under the direction of Dominic J. Cunetto. "The Clod," "Another Way Out," "Hello Out There," and "The Villain Still Pursued Her," student-directed plays, were also presented. The Blackfriars drama awards were presented to Harriette Price, Matt Murphy, Joyce Hudson, Jack McDowell, and Sandy Scalco. A special Golden Blackfriar was presented to director, Mr. Dominic J. Cunetto, for his development of a theatre curriculum at M.S.U. Alpha Psi Omega officers for 1965-66 are Bruce Peterson, Nancy Carver, Jean Rainey, and Sandy Scalco.

#### OMEGA

Iowa Wesleyan College

Mt. Pleasant, Iowa

The Drama Department of Iowa Wesleyan staged three major productions directed by Prof. R. Alan Hedges: "The Lower Depths" by Gorky, "Arms and The Man," and "The Threepenny Opera." The Christmas play was "Let Men Live," and the student-directed plays were "Hello Out There," "The American Dream," "The Browning Version," and "No Exit." An Iowa Wesleyan Repertory Company has been organized that produced Strindberg's "The Great Highway" and next year will present "For Heaven's Sake." The children's theatre produced two plays this past summer. The acting award of the year was given to Jean Coulthurst. Honorable mention went to Phil Clars, Marlys Lee, Richard Mueller, and Bruce Hinkley. Omega cast officers were Jim Oethers and Jim Frey.





Montgomery, Tom Rosenfeld and Malinda Turpin in the Oakland City College production of "Blythe Spirit," Dr. J. J. Harper, director.

### GAMMA CHI

Weatherford, Okla.  
 st production of Southwestern State College was "Body," by Fred Carmichael, which was an interesting satire on murder melodrama. The second production, "Life with Father," by Howard Lindsay and Russell Crouse, was produced. Director of both shows was Damarise The Gamma Chi chapter also helped in the Southern One-Act Play Festival and the State Regional Play Festival. President of the local chapter was Joe Winner of the Duke Award for the student who has done outstanding work in the theatre was Jessie Wilburn.

### DELTA ALPHA

New Brunswick  
 Fredrickton, N. B., Canada  
 ty of New Brunswick Drama Society under the direction of Professor Alvin J. Shaw, "A Child Is Born," won the New Brunswick Region of the Drama Festival, taking five of the eight awards. Officers are president, Gordon Cunningham, and secretary, Barbara Ramsay.

### BETA ETA

Montgomery, Ala.  
 re was asked by the Montgomery Chamber of Commerce to present "A Child Is Born," by Stephen Vincent Benét, in their city-wide Christmas program. The State Coliseum before an audience of 1,000. The production was the one-act, "The Dear Friend," by Houghton, using students who had

never appeared in a college play. "The Skin of Our Lions," by Thornton Wilder, was next presented as a joint production with the Montgomery Little Theatre, directed by Mrs. M. Rankin, cast sponsor. Our last production was "Let There Be Light," written and directed by Mrs. Rankin. It was presented to the South Alabama-West Florida Conference of the Methodist Church. Adding to our successful year was the initiation of 12 new members. Officers for the year were Ann Ault and Patricia Bailey.

### KAPPA UPSILON

Eastern New Mexico University  
 Portales, N. M.  
 Betty Field was guest star for summer production of "Come Back Little Sheba." Ann Harding was a guest instructor at Eastern for the summer session and taught Techniques of Acting. Eastern also presented two Reader's Theatre productions directed by Dr. Don Wilmeth, and the highlight of Reader's Theatre was Dylan Thomas' "Under Milkwood." The Best Actor of the Year Award went to David Yorsh for Stanley in "Streetcar Named Desire," and the Best Actress Award went to Judy Wilmeth for her role as Blanche in "Streetcar Named Desire." Best Supporting Awards went to Ken Brown and to Peggy Connor for their acting in "The Miracle Worker." The other major production was "The Taming of the Shrew," directed by Dr. R. Lyle Hagan. The Children's Theatre Production of "Heidi" was presented to some 15,000 school children in Southeastern New Mexico and West Texas. Mr. Richard Lokken was the Children's Theatre Director. Plays scheduled for next year are "The Rivals," "Rhinoceros" and "J. B." Kappa Upsilon officers were president, Ken Brown, and secretary-treasurer, Charollette Martin.



**Saint Charles, Mo.**

**Lindenwood College**

In commemoration of the 400th anniversary of Shakespeare's birth, we opened the season with a combination proscenium and semi-arena presentation of "The Winter's Tale." The pre-Christmas production was Schnitzler's "Anatol," and in the early spring, "Cradle Song." In the late spring, there were three one-acts presented completely in the round: "A Touch of Marble," Albee's "Fam and Yam," and "Castle in the Village." The season closed with a chancel production of Fry's "The Boy with a Cart" in the college chapel. Next year's president will be Sandra Appleby Moore; other officers are Gretchen Vesely, Gary Michael Donovan, Victor Kemper, and Robert Douglas Hume, faculty sponsor.

Blacksburg, Va.

Maroon Mask, in one of its most successful years, produced "Doctor Faustus" by Christopher Marlowe, "A Shot in the history Dark" by Marcel Achard, and the first musical in the history of Maroon Mask, "The Beggar's Opera" by John Gay, all directed by Robert Mardis. Two Eta Gamma members, Bob Sweeney and Peggy Skinner, organized a group to produce two one-act plays during the summer session: "The Tridget of Greva" by Ring Lardner, and "The American Dream" by Edward Albee. This summer production was another Maroon Mask first. President and secretary for next year will be Charles Ennes and Katherine Thomas, respectively.

## Bozeman, Mont.

The Omega cast had a very successful season under the direction of Kenneth Vannice. Don Wulff, Patricia Goering, and Shular. Mr. E. C. Hipple served as advisor in the production of "The Merchant of Venice" by Mr. Joseph C. Fitch, and assisted in producing "A Raisin in the Sun" by Lorraine Hansberry, "Oedipus the King," "Twelfth Night," and "La Douce," and three Reader's Theatre productions. The Theatre Arts Department also produced its fourth

annual Children's Show. "Alice in direction of Gwen Shular. During the new members and one honorary member the fraternity, and Ken Vannice was to be assisted by Marty Bartlett, Mary Swanberg. This summer the Gamma G fourth season, The Loft Theatre, will "See How They Run." "The Father Dad . . ." and "Everyone Loves Opal.

**Harding College**

Our two on-campus productions were "Antigone" in modern dress, and Le. "Camelot." The players also went on tour with a "Review of the Theatre '63." The posts in Missouri, Kansas and Colorado. A production was done in the Little Theatre-New Clothes." New Alpha Psi members were Huddleston, Erlene Laney, Jim Ed Williams, and Milton Reed. The Fifth Annual Spot, technical awards went to Tom Reppart, Erlene Reed, Julie Huddleston, Andy Saunders, Jim E Max Hager. Van Alessandro was selected for membership.

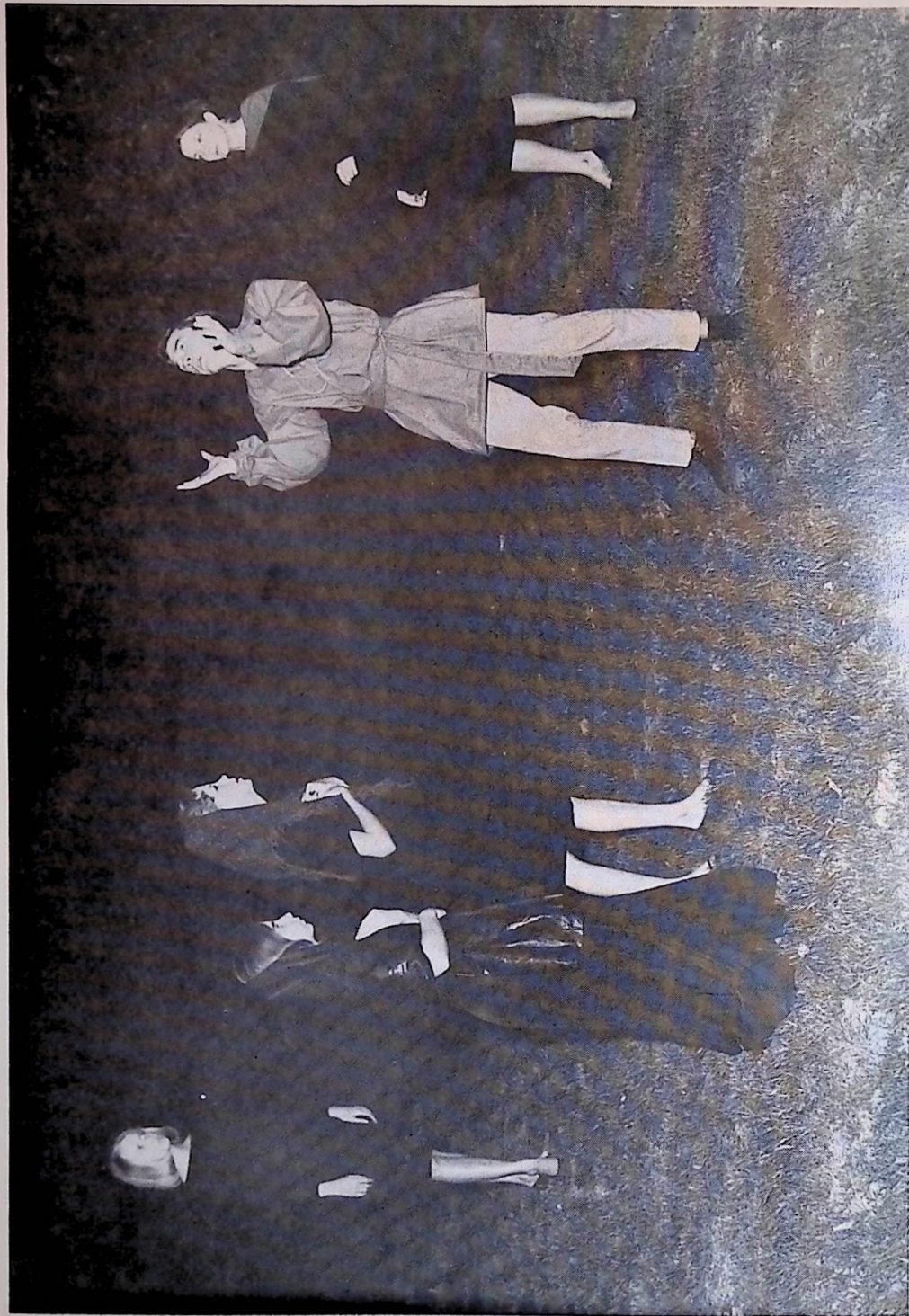
## Johns Hopkins University

The Johns Hopkins Barnstormers had a very successful year under the direction of John Synodinos and Margo. Three major productions were "Six Characters in Search of an Author," "Electra" by Giradoux, and the musical "Fantasticks." Considerable effort was put into these productions and playwrighting, and Heiko Pensel wrote a "A Happening at Obens" and "The Ten Minute House." Jon Green directed Shaw's "Augustus Does His Bit." Stephen Jarrett directed "The Boor" by Anton Chekhov. Stephen Creed was Iota chapter president and H. Wessler was secretary. Five new members were added this year.

*Scene from "Cradle Song," Lindenwood College, directed by Maxine Basch, Jr. From the left, Sandra Moore, Kathy Hake Schroeder, Laurie Rhodes, Madeena Nolan, Marianne Sawyer, Donna Burgess, Gretchen Vesely, Victoria Jacobs, and Gary A. Dorozan.*







Marty Guna, Patricia Wolf, Marianne Sawyer, Michael Donovan, and Karl Slinkard, *A Cart*, directed by Karl Slinkard, Lindenwood College, St. Charles, Missouri.



## MU PHI

Southern State College

Magnolia, Ark.

The Southern State Drama Department in conjunction with the Stagecrafters presented two major plays: "The Chinese Wall" and "The Well of the Saints." Mr. Neil Bibler was the director and Miss Margaret Harton, technical director. Under the direction of Mr. Bibler, the Reader's Theatre presented "Little Foxes" and "The Third Woe." Miss Harton's acting class presented "Sparkin'," "A Phoenix too Frequent," "Good Night, Caroline," and "Sleeping Dogs"; and in the spring term, the advanced acting and directing classes presented "Blithe Spirit" and the children's theatre class presented "Peter, Peter, Pumpkin Eater" for the Magnolia public elementary schools. Our Mu Phi cast presented its annual Aardvark Variety Show which was again a big success. Drama trophies were presented in early May at our annual picnic to Robert Kelley, Judy Shirey, Ronald Crider, Brenda Hall, Elizabeth Barfell, and Paul Hankins. The new officers are president, Lynda West; vice-president, Elizabeth Barfell, and secretary-treasurer, Elizabeth Bruce.

## ALPHA OMEGA

Augustana College

Rock Island, Ill.

Instead of an evening of three one-act plays, three performances were given by three completely different casts, each performance showing the interpretations of three different student directors. The play was Tad Mosel's "Impromptu." The audience was highly pleased in comparing the performances and directing. Interest in the Augustana Players and the major productions was so great this season that S.R.O. ticket sales were in evidence for both major productions, "Oedipus Rex" and "The Madwoman of Chaillet," both directed by James Tornquist. Alpha Omega cast officers were Ann Boardman and James Kuhagen.

## MU OMICRON

Memphis State University

Memphis, Tenn.

This past year, for the first time Memphis State had a guest professor in residence. He was noted British director, Eric Salzman. Mr. Salzman taught advanced classes in acting and directing. In addition to directing the annual Shakespeare Festival, staging "The Winter's Tale." Guest director, Bennett Wood, staged "The Imaginary Invalid." The other major shows were "Black Ey'd Susan," "Hedda Gabler," "Lucky Jim," and "Royal Gambit." After the success of M.S.U.'s Repertory Theatre last summer, plans are underway for an even larger program this summer. Ann Harding, star of many films and Broadway plays, will come to M.S.U. to guest star as Miss Moffat in "The Corn Is Green." Other repertory productions will be "Mademoiselle Colombe," guest directed by Bennett Wood, and "Mandrags," directed by Dr. Harry Ausprich. The year's best acting awards went to Jerry Chipman and Anne Bastnegel.

## MU DELTA

New Mexico State University

Univ. Park, N. M.

Prof. Herschel Zohn directed "Firebugs," the opener of the 64-65 season, and "The House of Bernalda Alba." He also directed the Yeats translation of "Oedipus Rex." "Aladdin," directed by Prof. Leo Comeau, was given an extra performance by popular demand. The musical, "Kiss Me Kate" was a week's sell-out plus two matinees. The orchestration was in charge of Prof. J. Glowacki, while Mr. Zohn and Comeau did the directing. A one-act play festival was held in March with all high schools of the state participating. Students directed 11 one-act plays to close the season. All our chapters were proud of wearing the Alpha Psi Omega sweatshirts this year. Fifteen new members were admitted. For the second summer, two plays will be presented: "Take Her, She's Mine" and "Waltz of the Toreadors." Officers for the year were Louis Estrada, Larry Streich and Dianne Haak.

THE 1965 PLAYBILL



Steve Levine as Othello, Moravian College, Eugene Jacobson, director.

## IOTA THETA

Moravian College

Bethlehem, Pa.

The Blackfriars of Moravian College presented "The Firstborn" by Christopher Fry and "No Exit" by Sartre, both directed by Eugene Jacobson. The Sounds of Shakespeare was an evening of scenes, songs and sonnet readings. A one-act playwriting contest was sponsored and the three prize-winning plays were produced under student direction. The plays were "Torey" by Lea Suters, "Phooey on Louie" by Blake Carter, and "The Lilac Dance" by Sandi Creitz. Additional performances of these plays were given before the alumni association and Fountain Hill High School. Chapter officers of Alpha Psi Omega were Sandi Creitz and Joy Fox.

## GAMMA KAPPA

Edinboro State College

Edinboro, Pa.

Attendance has been growing steadily for the productions of Collegiate Players. Dr. Dorothy Clifford directed and staged "The Miracle Worker," "The School for Husbands," "The Boy Friend," and the two one-act plays, "The Magic Riddle" and "Red Peppers." Fourteen of us attended the Region IX Children's Theatre Conference. Fourteen new members were admitted to Alpha Psi Omega. Chapter officers were Bev August and Joyce Cook.



Scene from "The Firstborn" by Christopher Fry, directed by Eugene Jacobson, Moravian College, Bethlehem, Pa.

#### ETA BETA

Carson-Newman College

Jefferson City, Tenn.

The plays this season were "Taming of the Shrew" and "On Borrowed Time," directed by Professor John Lee Welton. The one-act plays were "Suppressed Desires," "This Night Shall Pass," "Madam President," "The Little Lady of Friday Night," and "Christ in a Concrete City." The most exciting highlight of the year was the presentation of the Malcolm Miller Memorial Award for the Outstanding College Musical Production given to Carson-Newman College Drama Department and Prof. John Lee Welton for the production of "The King and I" for the last season. Eta Beta president was Elizabeth McNish, secretary, Bronson Parker.

#### NU SIGMA

Lake Forest College

Lake Forest, Ill.

This past year, the Garrick Players presented a play written by Mignon and Robert McLaughlin, parents of senior drama major, Thomas McLaughlin, entitled "Gayden," the Shakespeare farce "The Taming of the Shrew," and the musical "The Fantasticks." The production of "The Fantasticks" marks the first musical venture for the 63-year-old dramatic organization in over 20 years. The coming theatre season is to consist of classics, Shakespeare, and perhaps another musical. President this year was James Hennings; faculty director is John C. Converse.

#### THETA PI

Pacific Lutheran University

Tacoma, Wash.

Over 60 people took part in the Speech Department-Music Department production of "Carousel." Prof. T. O. H. Karl

was producer, Dr. Abe J. Bassett, dramatic director, and Maurice Skones, musical director. Dr. Bassett also directed the long play "Blithe Spirit." Mr. Arden Flom directed "Under the Sycamore Tree" by Samuel Spewack. The Theta Pi also sponsored a high school one-act Play Festival with 25 schools presenting plays. Karen Mansen, Lyla Tsuji and Arden Flom directed three one-act plays: "Hello Out There," "The Triumph of the Egg," and "Impromptu." Arden Flom received the Merit Trophy presented by the Department of Speech for outstanding work based on backstage work, acting and directing. We also presented Charles Dickens' "A Christmas Carol" at Christmas time, student-directed by Priscilla Orr. Cast secretary was Jan Aalbu.

RHO MU, West Chester State College, West Chester, Pa. Our theatre organization, Theatre 208, presented three major productions, directed by Prof. William F. Cope: "Long Day's Journey Into Night," "Alcestis," and "Epitaph for George Dillon." Three one-act plays, "The Bald Soprano," "Bertha," and "Crawling Arnold," were directed by cast members to give students training and experience in acting. Chapter officers were Helga Krauss, Ed Pennypacker and William Newborg.

PI CHI, Mississippi College, Clinton, Miss. Tribal Players, Charles C. Fuller, Jr., director. The season was especially gratifying because of excellent cooperative spirit and ability of those participating. "The Rock" by Mary P. Hamlin was taken on tour. The major plays were "Blithe Spirit" and "Caesar and Cleopatra." Pi Chi officers were Shirley Bond, president; Ann Jones, secretary.

KAPPA IOTA, Southwestern at Memphis, Memphis, Tenn. R. S. Hill, director. The productions of the '64-'65 season were Sophocles' "Electra" and "J. B." by Archibald MacLeish. Cast officers were Walter Brown and Ann Berlin.

THE 1965 PLAYBILL





Nancy Oehmich as Iocaste and Steve Baxter as Oedipus in "Oedipus Rex," Augustana College, Rock Island, Illinois, Don Tornquist, director.

ETA OMICRON, Carthage College, Kenosha, Wis. The productions this season were "West Side Story," "Medea," and "Summer and Smoke," directed by Dr. T. Shandy Holland. Dr. R. C. Wickman directed "Billy Budd" and "Silver Cord." Eleven members qualified for Alpha Psi Omega. Chapter officers were Dennis Fillippo and Ron Burritt.

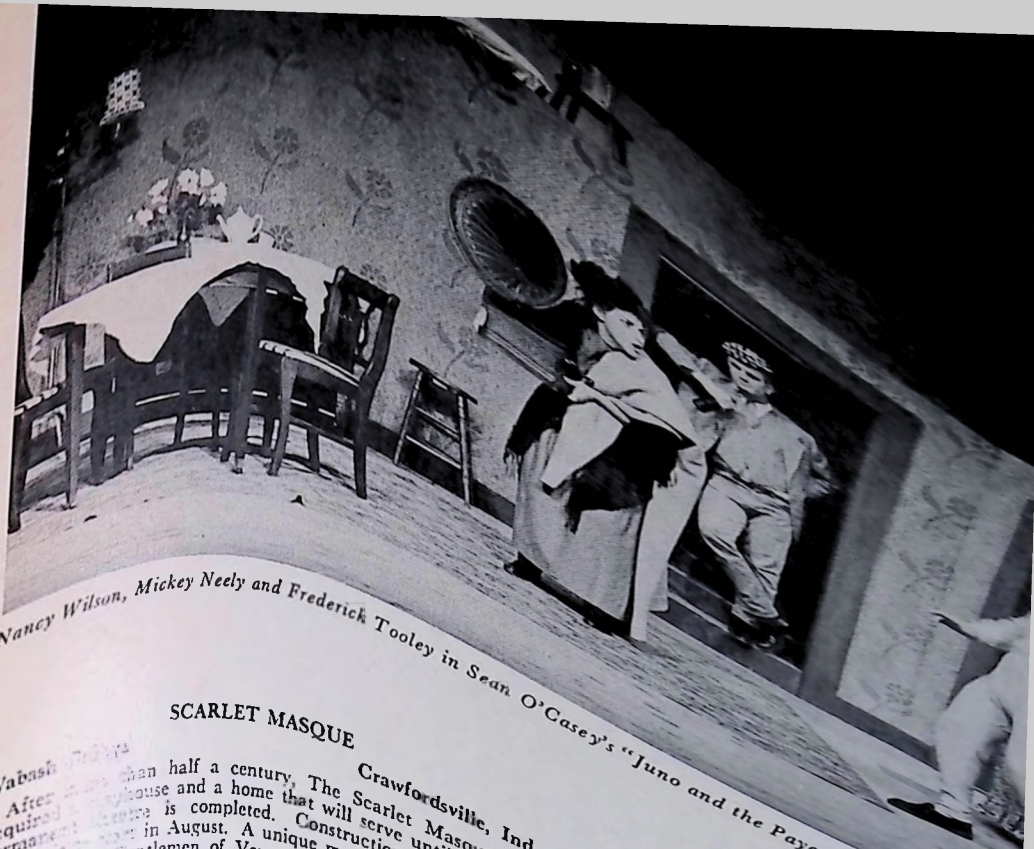
RHO CHI, St. Joseph's College, Evening Division, Philadelphia, Pa. The Twilight Players under the direction of John P. Collins presented "The Glass Menagerie," "Gideon," and "Antigone." Chapter officers were Marguerite Daley, Gerald Cavanaugh, Joanne Connally, and Maryanne Drennan.



"Bayou Players, McNeese State College, Lake Charles, La.  
from 'Juno and the Paycock,' directed by McNeese"







SCARLET MASQUE

After more than half a century, The Scarlet Masque has acquired a new house and a home that will serve the permanent theatre is completed. Construction until the new theatre is ready in August. A unique modern dress presentation of "The Gentlemen of Verona" made it a feature presentation of the way Dr. Donald Baker made it a feature presentation. Record-breaking crowds were pleased to see the new production. "The Inspector General" by Harold Pinter, "The Birth of a Nation" by Calvin Shearer and John A. Mason. "The Birth of a Nation" by Calvin Shearer and John A. Mason. "The Birth of a Nation" by Calvin Shearer and John A. Mason.

above, the University  
play contest by  
by Murry  
second  
six

## PI GAMMA

McNeese State College  
Players

The Bayou Players opened the season with "Trio," three original one-act plays, two written by Elwood Williams and one by Mr. Williams and Don Snell. "Tributes to Rosa" was dedicated to the memory of Rosa Hart, long-time director of the Lake Charles Little Theatre. "Juno and the Paycock" was dedicated to the memory of Sean O'Casey, and "Macbeth" to the memory of George Ruffin Marshall who had written incidental music for many of our plays. "Time Remembered" (Anouilh) completed the season of full-length plays, directed by Margery Wilson, with Elwood Williams as technical director. "My Fair Lady" was the opening production of the Music Department. Cast officers were Jim Tarver, Norris LeBeauf, Wade Daigle, and Micky Neely.

NU ETA

Niagara University

Niagara University, N. Y.

The fall presentation of the University Players, directed by Rev. Joseph P. Ganley, was the courtroom drama, "The Night of January 16th," by Ayn Rand. The next major production was "The Diary of Anne Frank." Peter Tավալցեի was the student director of the play, and the production and technical aspects were handled by Br. Augustine, C. M. "Riders to the Sea," directed by Kathleen Polowy, won first place in our third annual intramural one-act play festival. The other plays entered in this event were "Hand Across the Sea" and "The Happy Journey to Camden and Trenton." In addition to the

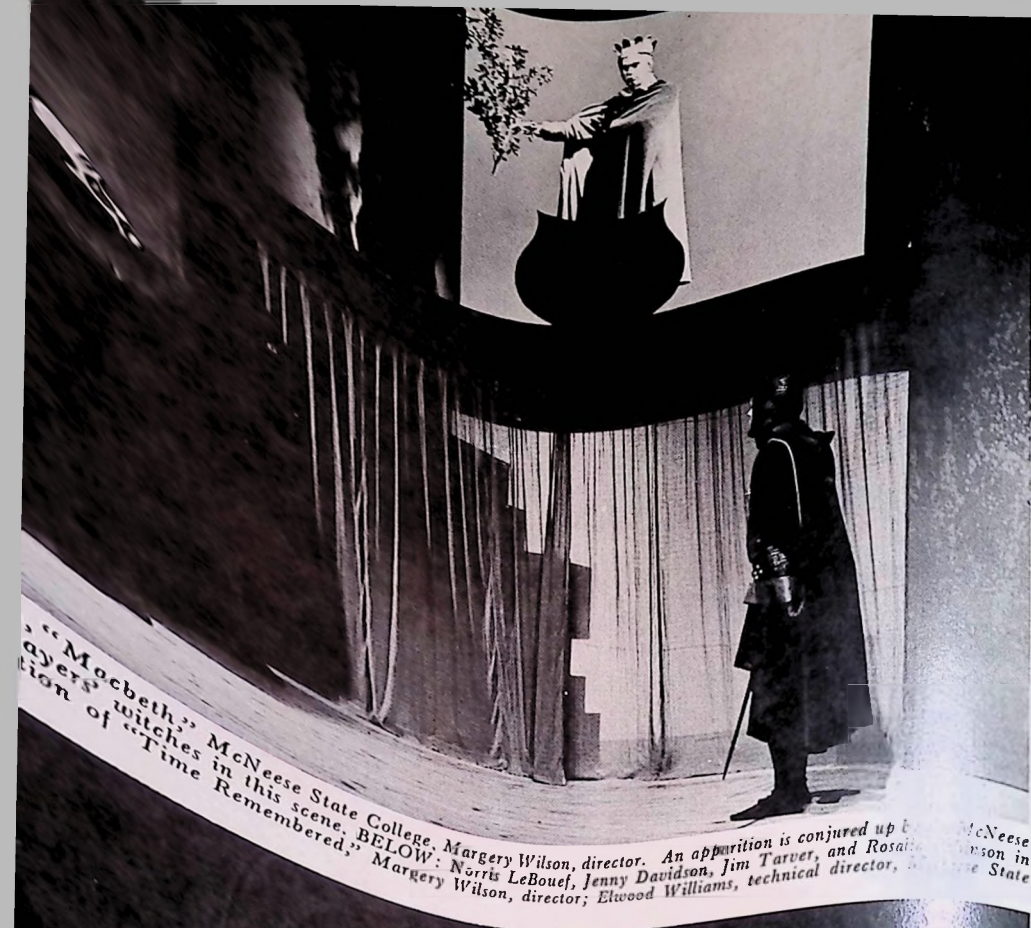
Little Rock University

[illegible]

ZETA MU  
York

**ZETA MU**  
The director of the University Theatre is Dr. Thos. son. The major productions this season were "The D Taipei" by Conrad Bromberg, directed by Dr. Watse Balcony, directed by Thomas Brennan; and "The Pri and Public Ear," directed by Mrs. Julia Pardee. I directed one-act plays were "The Tiger," "The Spider, Teacher and His Victim," and "The American Dream," American Dream" won third place and Susan Sturgeo the best actress award for "Mommy" in this show at Bonaventure Drama Festival. We attended the Yale I Festival as observers. Alpha Psi Omega officers are Groden and Corinne Jaffe.









Theresa Delaney (*Alceste*) and Ludmilla Hamilton (*Clitandre*) in "*Misanthrope*," Incarnate Word College, San Antonio, Texas.

**DELTA SIGMA**, Judson College, Marion, Ala. The Judson Players, under the direction of Shaw Robison, presented "*Tenderloin*," "*To Cry*" and the musical comedy, "*The Pajama Game*." Productions planned for the next season are "*The Sound of Music*," "*Picnic*," and "*Annie Get Your Gun*." Cast president, Marcia Boyd; secretary, Elise Wingfield.

**LAMBDA**, Washington and Jefferson College, Washington, Pa. The Maskin Club, directed by Robert L. Brindley, staged "*Two Blind Mice*," "*Calculated Risk*," and "*Dirty Work at the Crossroads*." James Kehoe is cast president.

**LAMBDA OMEGA**, State University at Oneonta, Oneonta, N. Y. Dr. Josef Elfenbein, director. The College Theatre's major productions were "*The Lady's Not for Burning*," "*The House of Bernarda Alba*," "*The Caretaker*," "*Rashomon*," and "*The Gondoliers*." William Goertemoeller and Susan Parker were chapter officers. Five new members admitted in May were Aileen Abrams, Dorothy Porullo, Stanley Schwartz, Susan Parker, and Irene Wagner.

**IOTA XI**, Incarnate Word College, San Antonio, Texas. Sister M. Germaine directed "*Electra*" and "*The Misanthrope*," and Dr. Norton directed "*Waiting for Godot*." A Play Festival for High Schools was sponsored this year. Chapter officers were Judy Brockway, Luisa Sanchez and Jean Scott.

**MU RHO**, Rhode Island College, Providence, R. I. Joseph D. Graham, director. The Rhode Island College Theatre presented "*The Man of Mode, or Sir Fopling Flutter*," "*The American Dream*," and "*The Bald Soprano*," directed by Mr. Graham; "*Blood Wedding*," directed by Ella Smith; and "*The Wall and Homage to A. G. B.*," directed by Roger Knaiber. Cast president was Daniel DelVecchio, and secretary, Andrea Girouard.

**ETA TAU**, Wisconsin State University, Platteville, Wis. Harold R. Hansen, director. The Pioneer Players staged

"*Everyman*" and "*Twelfth Night*," directed by Dr. Robert Sporre, and "*Life with Father*" directed by Mr. Hansen. All properties, scenery and costumes for the presentations were designed and created by students. Ronald King and Donna Swinchart were chapter officers.

**RHO BETA**, State College at Boston, Boston, Mass. Henry L. Gormley, Jr., director. The season's productions were "*Oklahoma*," directed by Bob Guest; "*The Curious Savage*," directed by Robert Campbell; and the short plays, "*How He Lied to Her Husband*," directed by Sid Liberman, and "*The American Dream*," directed by Jim Roche. Chapter officers were Liberman and Flo Dodge.

**KAPPA IOTA**, Southwestern at Memphis, Memphis, Tenn. Under the direction of Mr. R. S. Hill, the Southwestern Players presented "*Electra*" and "*J. B.*" In John Gay's "*The Beggar's Opera*" we sponsored Theatre Group 20 from London. Cast president was Walter Brown.

**BETA CHI**, The Defiance College, Defiance, Ohio. John Gore, director. The 1964-65 season's plays were "*All the King's Men*," "*The House of Bernarda Alba*," and "*The Beautiful People*." Productions planned for next year are "*A Midsummer Night's Dream*" and "*The World We Live In*." Chapter officers are Roberta Lewis and John Terry.



"*Everyman*," directed by Robert Sporre, Wisconsin State University; Knowledge, Pat Giese; *Everyman*, Charles Purcell.



A scene from "The Miser," Wisconsin State University, Platteville, directed by Harold Hansen.



Scene from "The Male Animal," directed by Robert Sporre. From the left, Marcia Turner, Marcia Skinrod, Alice Kolach, and Kay Doeringsfeld.

**SIGMA MU**, Pan American College, Edinburg, Texas. Arthur R. Hayes, director. The Green Mask staged "Murder in the Cathedral" under the direction of Mrs. Ruth Owings, and Mr. Hayes directed "Glass Menagerie" and "Come Blow Your Horn." Terry Kline and Shirley Trevathan were cast officers.

**PI PSI**, State College at Westfield, Westfield, Mass. Dr. Wallace Goldstein, director. The Footlighters presented "Look Homeward, Angel" and "My Fair Lady"; and the student-directed, one-act plays were "Mooney's Kid Don't Cry" and "The Wanderer." Cast president was Francis Best; secretary-treasurer, Martin Conway.

**RHO OMICRON**, Sioux Falls College, Sioux Falls, S. D. Dr. Perry W. Patterson, director. The Roister Doister Drama Club, under the direction of Mr. Rodney Van Loh, presented "Candida" and "Blithe Spirit." Chapter officers were Susan Gillies, president, and Carol Ann Leach, secretary-treasurer.

**ZETA DELTA**, Arkansas State Teachers College, Conway, Ark. Sue Lineback, director. The College Theatre staged "The Corn Is Green" and the one-act plays "Just for Fun with the Little People," "Egad-What-A-Cad," "Overtones," "Dark Lady of the Sonnets," and "The Numbers Game." This year we have done several student, original scripts both for Reader's Theatre and arena staging, which have created much interest. Chapter officers were John Reno and Marsha Pratt.

**GAMMA SIGMA**, Cascade College, Portland, Ore. Geraldine Hess, director. The major productions were "The Merchant of Venice" and "The Marriage Wheel." The short, one-act plays were "Julio and Romiet," "A Zenix Too Frequent," and "The Last Word." Robert A. Petty and Rodney Calder served as the chapter officers.

**LAMBDA TAU**, Emmanuel College, Boston, Mass. Mr. William Lawless, director. The Emmanuel College Dramatic Society, with Sister Catherine Edward as Manager, gave three performances of each of the following plays directed by Mr. William Lawless: "The Cocktail Party" and "The Importance of Being Earnest." Margo Downey and Judith Kelly were chapter officers.

**ZETA BETA**, Stout State University, Menomonie, Wis. Noel Falkofski directed the College Theatre in the staging of "She Stoops to Conquer," "Desire Under the Elms," and "Destry Rides Again." Cast president was Marian Dunn, and secretary, Christine Martin.

**MU ZETA**, Austin Peay State College, Clarksville, Tenn. During the 1964-65 season, the State College Playhouse had the largest audiences in its history. This is our first season to stage four major productions: "The Glass Menagerie" and "The Taming of the Shrew," directed by John G. Griffin; and "Playboy of the Western World" and "The Time of Your Life," directed by Dr. David Mays. Six one-act plays were presented under the direction of students. Productions planned for next year include "Ghosts," "Denny and the Witches," "The Solid Gold Cadillac," and "Twelfth Night." Cast officers were Doug Tidwell and Kathy Bulkley.

**THETA BETA**, The Woman's College of Georgia, Milledgeville, Ga. James Maloon, director. For the 1964-65 season the major productions of the College Theatre were "Bright Girl," "Picnic," and "Riverwind." Mary Simons was chapter president.



**IOTA RHO**, Coe College, Cedar Rapids, Iowa. Jeannette Ringland directed the Coe College Players in presenting "Amphitryon 38," "Inherit the Wind," and "Death of a Salesman." Chapter officers for 1964-65 were Carmen Whitecotton and Gay Nelson; secretary-treasurer for '65-66 is Patricia Maroushek.

**NU ALPHA**, Livingston State College, Livingston, Ala. Prof. W. E. Wilson, director. The plays staged during the past season were: "The Male Animal" in the fall, "The Diary of Anne Frank" in the winter, and "Our Town" in the spring. We have tentatively selected "My Three Angels," "The Glass Menagerie," and "The Caine Mutiny Court-Martial" for next year's shows, as well as a Children's Theatre production in the winter.

**IOTA DELTA**, McMurry College, Abilene, Texas. Jim Baines, director. The McMurry Theatre presented the major productions "Much Ado About Nothing" and "The Glass Menagerie," directed by Mr. Baines, and "The Chalk Garden," directed by Jack Sublett. Student-directed, one-act plays were "The Marriage Proposal," "Shadow of the Glen," "These Cornfields," "Chee-Chee," "The Vice," and "The Strategists." Tony Way and Norma Hughes were cast officers.

**MU GAMMA**, Northeastern State College, Tahlequah, Okla. Ruth Arrington, director. The Drama and Music Departments, under the direction of Ruth Arrington and Dr. Ralph Whitworth, presented "Carousel," "The Cradle Song" and the one-act plays "The Remembrance Game," "A Time to Marry," and "Showcase of Talent" were directed by Ruth Arrington. Award winners for the past season were Earl Squires, for Jean Rogers, Bill Moore, and Sharon Burke. Officers of the chapter are Shirley Zeiler and Carol Jean Rogers.

**DELTA KAPPA**, University of Dubuque, Dubuque, Iowa. Richard Johnson, director. The major presentation of the season was taken from several Shakespearean productions done with the students arena staging. Short plays were "Supper Club Tonight," "Death of a Salesman," and cuttings from four modern plays. Chapter officers were Laura Braaten, president, and Jerry Sheffield, secretary.

**DELTA KAPPA**, Mary Hardin-Baylor College, Belton, Texas. Ruth Williams, director. The College Theatre presented "Quality Street," "Letters to Lucern," and the short plays "A Sunny Morning," "Riders to the Sea," and "Quiet Please." Cast president was San Sayre, and secretary, Janet Byrne.

**VERMONT ETA**, Norwich University, Northfield, Vermont. K. Wayne Wall, director. For the 1964-65 season the College Theatre presented "Witness for the Prosecution," "The Chairs," and "The Bald Soprano."

**DELTA TAU**, Ursinus College, Collegeville, Penn. Dr. Gerald Hinkle, director. The Curtain Club presented "Write Me a Murder," directed by Jud MacPhee and Don Rossiter; "The Mouse that Roared," directed by Roberta Hiller and Don Rossiter; and a children's play, "Winnie the Pooh," directed by Roberta Hiller.

**ALPHA BETA**, Coker College, Hartsville, S. C. The Queen Bess Players under the direction of Benjamin Bray staged "The Glass Menagerie," "Midsummer Night's Dream," and "Anastasia." Kathleen Reid was cast president.

**ALPHA CHI**, Shepherd College, Shepherdstown, W. Va. Dr. Vera Ellen Malton and Mr. Wade Banks, directors. The College Theatre presented "The Lady's Not for Burning," "Toys in the Attic," and the short, student-directed plays, "The Hour Glass," "The American Dream," and "No Exit." A reading of "Murder in the Cathedral" was given for Fine Arts May Festival; and an adaptation of "Alice in Wonderland" was sponsored by The Nonce. Stephen Eckerd and Randall Thomas were chapter officers.

**RHO RHO**, Monmouth College, West Long Branch, N. J. Kenneth Knapp, director. The major productions were "The Winslow Boy," "Hasty Heart," "Thurber Carnival," and cuttings of numerous modern plays given as studio productions. Chapter president was Tom Boyd, and secretary, Marilyn E. Egolf.



Final song in "Twelfth Night," directed by Robert Sporre, Wisconsin State University.

**IOTA OMEGA**, David and Elkins College, Elkins, W. Va. The Vagabonds, directed by Edward A. Moore, presented "The Beautiful People," "Mrs. McThing," and the short plays, "The Bald Soprano," "The Lesson," and "Christmas Carol." P. A. Adams was cast president, and Michael Harris, secretary.

**GAMMA EPSILON**, Murray State College, Murray, Ky. Prof. Robert E. Johnson, director. The College Theatre presented "Beauty and the Beast," "The Aspern Papers," and the short plays, "The Bald Soprano" and "The Lesson." Chapter officers were president, Gene Raye Miller; secretary, Kenneth Zimmerman.

**DELTA XI**, Rensselaer Polytechnic Institute, Troy, N. Y. The R. P. I. Players, directed by Morris Koffman, staged "The Tempest," "The Fantasticks," and "The Importance of Being Earnest." The one-act play, "The Death Watch," was directed by student, Amyn Sunderji.

**ALPHA XI**, Arkansas College, Batesville, Ark. The Harlequin Theatre productions which were directed by Doris Hammett were "Blithe Spirit," "The Glass Menagerie," and the short play, "The Ugly Duckling."





Scenes from "Boyfriend," St. Mary's Dominican College, New Orleans, directed by Sister Mary Joanna, O.P., Ph.D., Dept. of Speech and Drama.



**PI OMEGA**, Sterling College, Sterling, Kansas. Chairman of speech and theatre, Clayton C. Campbell; director of college theatre, James Braden. The major productions were "The Boy Friend," Mr. Braden, director, Robert Gordon, musical director; "Arsenic and Old Lace," and "Everybody Loves Opal," directed by Marilynne Turner and Mr. Braden. Other shows were An Evening with Shakespeare and an evening of one-act plays, "The Bald Soprano" and "Happy Journey."

**KAPPA NU**, West Virginia Institute of Technology, Montgomery, W. Va. George M. Hoth, director. The Tech Players presented "Mister Roberts," "Shakespeare 400," "Born Yesterday," and "Arms and the Man." Our plans for next year include two one-act plays in addition to the usual four plays.

**ALPHA ETA**, Geneva College, Beaver Falls, Pa. Under the direction of Mr. H. E. Farra, the Geneva College Theatre presented "Diary of Anne Frank," "The Fantasticks," and the short plays, "Master Pierre Patelin," "Song of Louise in the Morning," and "Christ in Concrete City." We took "Christ in Concrete City" on tour to six churches. Cast officers are president, Dave Fleeger; secretary-treasurer, Barb Recker.

**BETA SIGMA**, North Dakota State College, Mayville, N. D. The College Theatre, directed by Arlan W. Rahlf, presented "The Miracle Worker." Alpha Psi Omega officers were Ervin Sand, president, and Maxine Dick, secretary-treasurer.

**MU SIGMA**, Albright College, Reading, Pa. Samuel B. Shirk, director. The Domino Players presented "Monique," 20th anniversary production of Tennessee Williams' "The Glass Menagerie," and the short play, "A Phoenix Too Frequent."

**RHO OMEGA**, Notre Dame College, Cleveland, Ohio. The Masquers of Notre Dame College has produced two plays during the academic year, 1964-1965: "The Libation Bearers" by Aeschylus and "John Brown's Body" by Stephen Vincent Benet. President of Alpha Psi Omega was Jean Vanden Bosch.

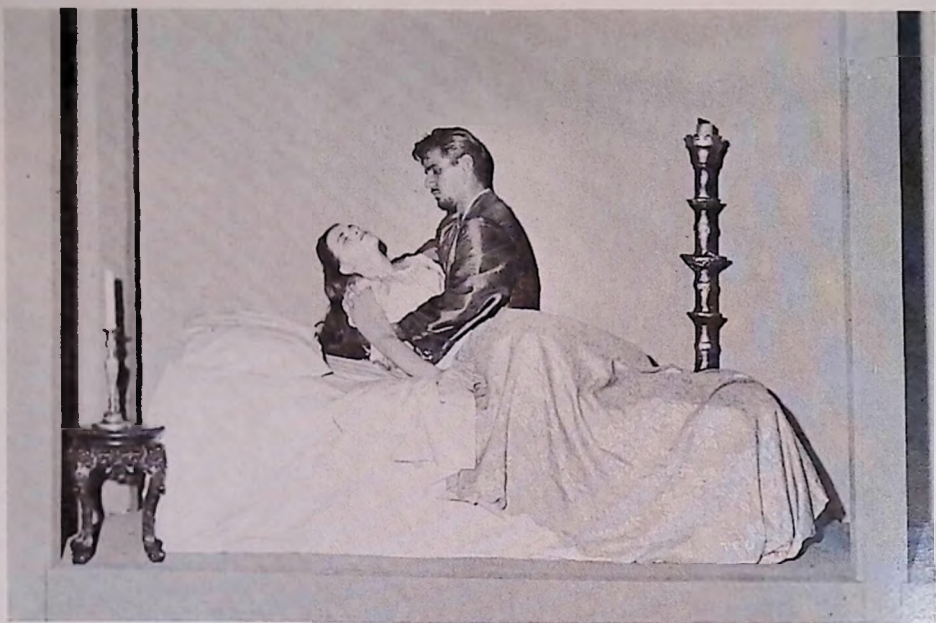
**IOTA KAPPA**, Davidson College, Davidson, N. C. Rupert T. Barber, Jr., director. The College Theatre productions this past year were "Coriolanus" and "Thieves' Carnival." The short plays were "The Chairs," "The New Tenant," and a workshop production of Pinter's "The Dumb Waiter" was directed by Boyce Myers. Productions tentatively scheduled for 1965-66 are "Green Grow the Lilacs," "The Play's the Thing," and "Glass Menagerie."

**DELTA PI**, California State Polytechnic College, San Luis Obispo, Calif. Prof. Keith Nelson, director. The major productions were "Two Blind Mice," "Taming of the Shrew," and "Our Town." Our chapter of Alpha Psi Omega sponsored our third annual High School Drama Tournament on May 8, 1965. Chapter officers were president, Julie Dutton, and secretary-treasurer, Millie Manning.

**GAMMA UPSILON**, Northern Illinois University, DeKalb, Ill. Dr. Willard Welsh, director. Dr. Welsh directed "Peer Gynt," with Robert Ploch in the title role; it was excellent with an original musical score. Prof. Ulrich directed "A Raisin in the Sun." Dr. Polzin directed "The Rivals," and Prof. Shaffer directed "Dyscolos" by Menander. Thirteen one-act and three-act plays were produced in the new studio theatre. The productions planned for next year are "Galileo," "Alice in Wonderland," "Tartuffe," and "Little Mary Sunshine." Chapter officers were Tony Calzaretta, Mary Fennessy and Edward Sullivan.



Scene from "The Boy Friend," directed by James Braden, Sterling College, Sterling, Kansas.



David Davis and Patricia Berlingeri as Othello and Desdemona in final scene of "Othello," Frostburg (Md.) State College, Dorothy Stone White, director.

**IOTA BETA**, Wisconsin State University, River Falls. Dr. Blanche Davis, director; Sanford Syse, technical director. Dr. Davis directed "Antigone" and "Mother Courage," and Mr. Syse directed "The Fantasticks."

**KAPPA THETA**, Central Michigan University, Mt. Pleasant, Mich. Dr. J. Alan Hammack, director. Productions for last season were "The Most Happy Fella," directed by Eugene Rydahl and Stephen Hobson; "Under Milk Wood," directed by R. A. Montanaro, Jr.; "The Marriage of Mr. Mississippi," a Reader's Theatre production; "My Father's Mantle," "Rhinoceros," "Picnic," and two children's theatre plays, "Alice in Wonderland" and "Snow White and the Seven Dwarfs." Plays selected for the 1965 season are "Once upon a Mattress," "A Midsummer Night's Dream," "Blithe Spirit," "Oh Dad, Poor Dad," and two children's theatre plays, "Pied Piper of Hamelin" and "Pinocchio."

**RHO SIGMA**, Millersville State College, Millersville, Pa. The Citamard Drama Society initiated the Four O'Clock Theatre Workshop which featured weekly, student-directed productions; an assistant director is to be added to the staff next year.

**TAU**, Texas Tech., Lubbock, Texas. Sock and Buskin Club productions this season were "The Tempest" and "The Glass Menagerie," directed by Ronald Schulz. Clifford Ashby directed Royall Tyler's "The Contrast," with Susan Wilkinson designing the colonial costumes, and Joe Skorepa and Dr. Ronald Sherriffs in charge of setting and technical arrangements. Mr. Schulz directed "The Threepenny Opera," with Charles Lawrie directing the music. Mary Evans will join the staff as costumer in 1965-66. Cast officers were Darlene Hunter, Kathleen McGraw and Pat Rogers.

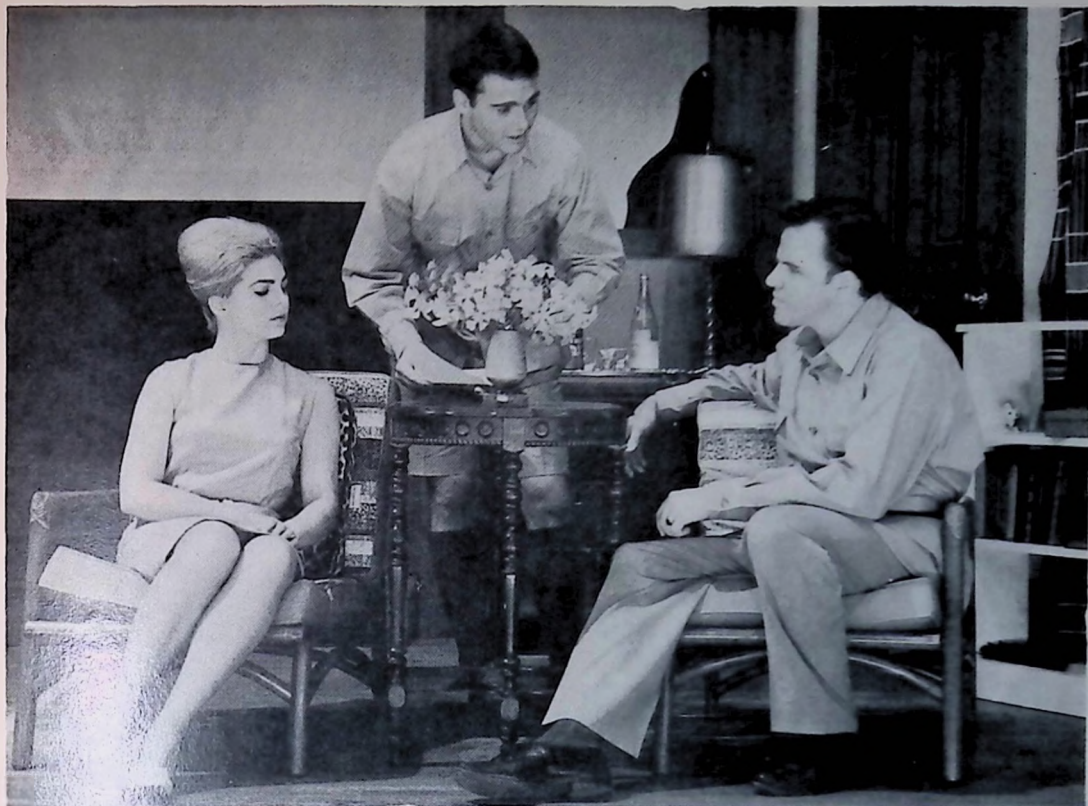
**IOTA NU**, Immaculata College, Immaculata, Pa. Due and Curtain Players staged "Mary of Scotland," directed by Sister Mary Donatus, and the traditional season of a dramatic one-act contest and an annual passion play. A dramatic trip for "Richard III" at St. Joseph's College was sponsored in the fall. For the 1965-66 season, Iota Nu plans to sponsor a Theatre Day, open to all area colleges.



Scene from "Mother Courage," Wisconsin State University, River Falls, directed by Dr. Blanche Davis.

THE 1965 PLAYBILL





Par. Costello, Sherry Madden and Frank Hammond in a scene from "The Letter," Western (Kentucky) State College. Dr. R. H. Miller, director.

**BETA**, Marshall University, Huntington, W. Va. Clayton Page, director. The University Theatre presented "The Happy Time," directed by Mr. Page; "The Barretts of Wimpole Street," directed by William Kearns; and "The Pajama Game," directed by Elaine Novak. Cast officers were Lynn Carroll and Sandra Lilly.

**THETA THETA**, Waynesburg College Playhouse, Waynesburg, Pa. The cast of "As You Like It," given in commemoration of the 400th anniversary of Shakespeare, learned what a truly rewarding experience it can be to perform the master's works. After last year's success with "Kiss Me Kate," we produced another musical, "The Pajama Game." Playhouse members have made regular theatre trips to see the productions at Carnegie Tech. and The Pittsburgh Playhouse. Cast president is Virginia Leonard.

**THETA PSI**, Hastings College, Hastings, Neb. The productions of the Hastings College Players, directed by Dr. H. C. Shiffer, were "The Taming of the Shrew," "Three Men on a Horse," "Lute Song," and the following one-act plays: "Improvisation," "The Lesson," "If Women Worked as Men Do," "The Twelve Pound Look," "Eliza and the Lexicon," "The Zoo Story," "A Phoenix Too Frequent," "The Old Pine Tree (Noh drama)," "The Case of the Crushed Petunias," and "A Sunny Morning." Chapter officers were Linda Wells, Maxine Johnson, and Delia Sandeen.

THE 1965 PLAYBILL

**MU LAMBDA**, Western Kentucky State College, Bowling Green. The major productions of the Western Players directed by Dr. R. H. Miller were "Six Characters in Search of an Author," "Antigone," "Bye Bye, Birdie," and "The Letter" by Somerset Maugham. Shirley Lanham directed "The Phoenix Too Frequent," and Robert Wurster directed "The Misunderstanding" by Alfred Camus. Short plays were "Dance Concerto," "Delas Aceitunas," "Sancho Pancaen Barataria," "Bedtime Story," and "The American Dream," an original one-act written by Betty Shely. "The Talented Failure," The Western Summer Theatre presented "This Fair Land," a historical regional drama, "Shakertown Revisited," "Three Men on a Horse," and "The Night of the Iguana," all directed by Dr. Miller. Chapter officers were Toni C. Martin and Louatha Banks.

**DELTA LAMBDA**, Northwestern College, Orange City, Iowa. The college theatre directed by Mrs. H. L. England, presented "Under the Gaslight," "The Wizard of Oz," "The Glass Menagerie," and the short plays, "The Wind and the Wall," "All His Little Fingers," and "A Sunny Morning." Plays selected for the current season are "Streets of New York," "Emperor's New Clothes," "Devil's Disciple," and "Electra." Choral Readers group continues to grow in popularity and effectiveness. The group gave thirty some concerts and toured extensively, coast to coast. Chapter officers are Ruth Kennerde and Sheryl Jansma.



*"The House of Bernarda Alba," directed by Herschel Zohn, University of New Mexico.*



*"Six Characters in Search of an Author," a production of the Western Players, Russell Miller, director, Western Kentucky College.*

NU NU, Findlay College, Findlay, Ohio. Irene Sharninghouse, director. A reader's theatre was organized this year and presented one production. The two major productions were "Death of a Salesman" and "Take Her, She's Mine." Four one-act plays were student-directed. Cast officers were Ned Powell and Don Gix.

KAPPA MU, Oregon College of Education, Monmouth, Oregon. Richard A. Davis, director. Fred Norman directed "All My Sons" and "The Curious Savage," and George Harding directed "H.M.S. Pinafore." Cast president was Betty McFarlane, and secretary, Virginia Black.

SIGMA DELTA, Viterbo College, La Crosse, Wis. College Players, Sister Marie Leon, director. The major plays of the past season were "The Lady's Not for Burning," "The Little Foxes," and a Reader's Theatre presentation of "Under Milkwood." Cast officers were Sheila Powers and Vickie Burk.

LAMBDA XI, Fort Hays Kansas State College, Hays, Kans. The opening of the new Felton-Start Theatre was dedicated March 1965 with a production of "The Affected Young Ladies" by Moliere, directed by Harriett Ketchum. A Reader's Theatre presentation of "J. B." was given, directed by Leon Tilbury, and Miss Ketchum directed "The Death of Bessie Smith" by Edward Albee. Cast officers were Linda Ohlemeier and Kay Finley.

SIGMA KAPPA, California Western University, San Diego, Calif. Donald L. Barbe, director. The major plays of the 64-65 season were "Hamlet," Thurber's "Thirteen Clocks," "Ring Around the Moon," and "Volpone." One-act plays were Shaw's "Bury the Dead" and "The Bald Soprano." A Greek Festival this summer will utilize the outdoor theatre. Sigma Kappa Cast was installed in April with 25 charter members. Chapter officers are Barry K. Bostwick, Katie Brand and Jim Stiles.

ALPHA, Fairmont State College, Fairmont, W. Va. The Masquers and Fairmont State College Theatre presented four major productions: "The Imaginary Invalid" and "Between Two Thieves," directed by William Hanks. Joanne Lough directed "The Crucible." Mr. Hanks directed and staged "The Fantasticks." A season of summer theatre was again presented in a tent on campus with four shows: "The Fantasticks," "The Chalk Garden," "Maybe Tuesday," and a sell-out week's run of "The Sound of Music." The director of the college theatre program is L. A. Wallman.

ALPHA MU, Winthrop College, Rock Hill, S. C. W. I. Long and Christopher Reynolds, directors. The major productions included "A Member of the Wedding," "Caribbean Holiday," "The Little Foxes," and a double bill consisting of "The Last Word" and "The American Dream."



**PI XI**, Chadron State College, Chadron, Neb. Thomas Turner, director. The long plays of the past season were "Brigadoon," "She stoops to Conquer," and "The Hairy Ape." The following one-act plays were directed by students: "Oh Dad, Poor Dad," "The Typist," "The Lesson," "The Trifles," "In the Zone," and "Krapps's Last Tape." Officers of the chapter are Larry Ireland and Carol Hanson.

**THETA TAU**, University of Southern Louisiana, Lafayette, La. Prof. William Ellis, director of University Theatre. The major productions were "Pygmalion," "Glass Menagerie," "Roshomon," "Mad Woman of Chaillot," and "Charley's Aunt." The Theta Tau officers were Larry Cook and Julie Haack.

**THETA ALPHA**, Glenville State College, Glenville, W. Va. J. Rodney Busch, director of college theatre. Mr. Busch directed "Angel Street" and "Romeo and Juliet." Student directed plays were "Impromptu," "The Smallest One," "The Leader," "The Still Alarm," "Aria da Capo," "Beyond the Fringe," and "Junkmen." The student-written play, "Junkmen" by James Bush, was presented by invitation at the University of Pittsburgh. Cast officers were Harold Daugherty and Eugene Nesbitt.

**KAPPA DELTA**, Bethel College, McKenzie, Tenn. B. W. Clifton, director. For the 1964-65 season the Gold Masquers presented "A Midsummer Night's Dream" and "The Fare to Tarshish," a religious touring play which was presented for about 20 performances. Chapter officers were Pat Overton and Linda Allen.

**RHO NJ**, Glassboro State College, Glassboro, N. J. Richard Wilcox, director. A presentation was given of excerpts from plays including "Kings and Queen," which included "Alice in Wonderland," "Mary Queen of Scots," "Victoria Regina," and "The Tenth Muse." The presenting of two evenings of one-act plays included "The Bedtime Story," "Mooney's Kid Don't Go," "The Ugly Duckling," "The Clod," "The Importance of Being Earnest," "The Boor," "The Unsatisfactory Supper," and "The Stronger."

**ETA PSI**, West Liberty State College, West Liberty, W. Va. Dr. R. H. Miller, director. The major productions of "Richard III," "The Fantasticks," and "Mr. Roberts" were directed by Harrison, and the short play, "The Mother," directed by Steiner. Chapter officers were Alan R. Steiner and Jim Jones.

**THETA SIGMA**, Missouri Valley College, Marshall, Mo. Jerald A. Cunningham, director. The Valley Players presented "The Passing of the Third Floor Back," "The Hollow Crown," "Life With Father," and the short, student-directed plays, "Sorry, Wrong Number," "The Still Alarm," and "The Social Event." Cast president was Jack Alongi, and secretary, Gerilyn Thompson.

**ETA PSI**, Seattle Pacific College, Seattle, Wash. The College Theatre, directed by Prof. James L. Chapman, presented "The Merchant of Venice," and our traveling drama troupe presented the short plays, "The Faith Hawker" and "Aria da Capo." Chapter officers are David C. Abbott, Mical Andrew and Faith Lambertson.

**BETA ALPHA**, Humboldt State College, Arcata, Calif. The Sequoia Masque Theatre presented four major productions: "A Midsummer Night's Dream," directed by John Pauley; N. F. Simpson's "One Way Pendulum," directed by George Goodrich; Walter Farley's "The Man Who Sings in the Streets" and "Desire Under the Elms," directed by Richard Rothrock; and "Dark of the Moon," directed by Mr. Goodrich.

**PI OMICRON**, Lamar State College of Technology, Beaumont, Texas. Dr. Ted Skinner, Dean of School of Fine Arts. A Film Classic Series was sponsored, and The Cardinal Theatre presented "Charley's Aunt," "The Rivalry," and an evening of student directed one-act plays. The same number of stage productions was given for the spring semester.

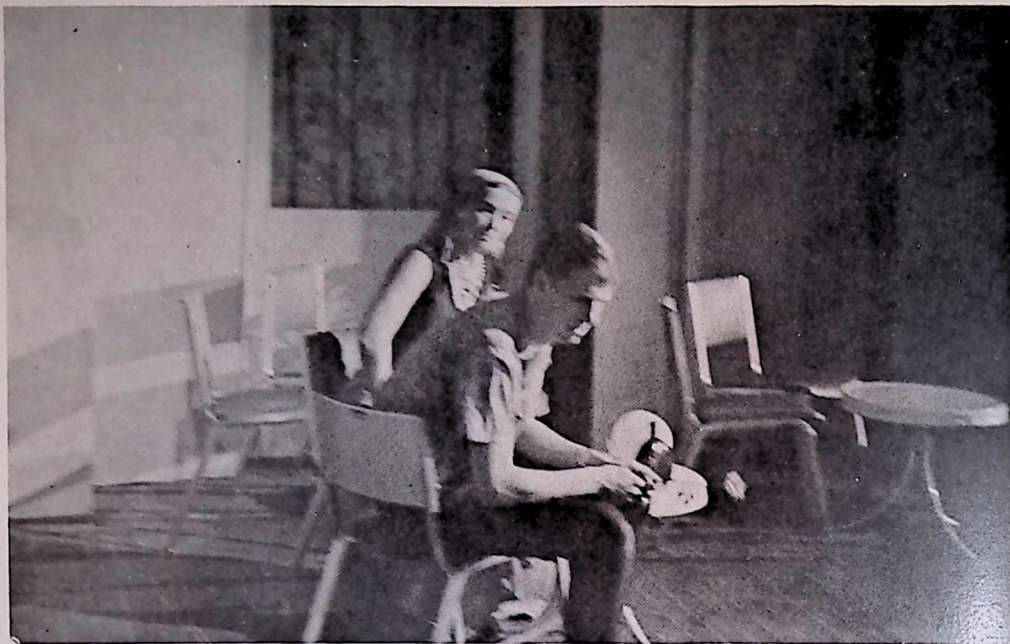
THE 1965 PLAYBILL



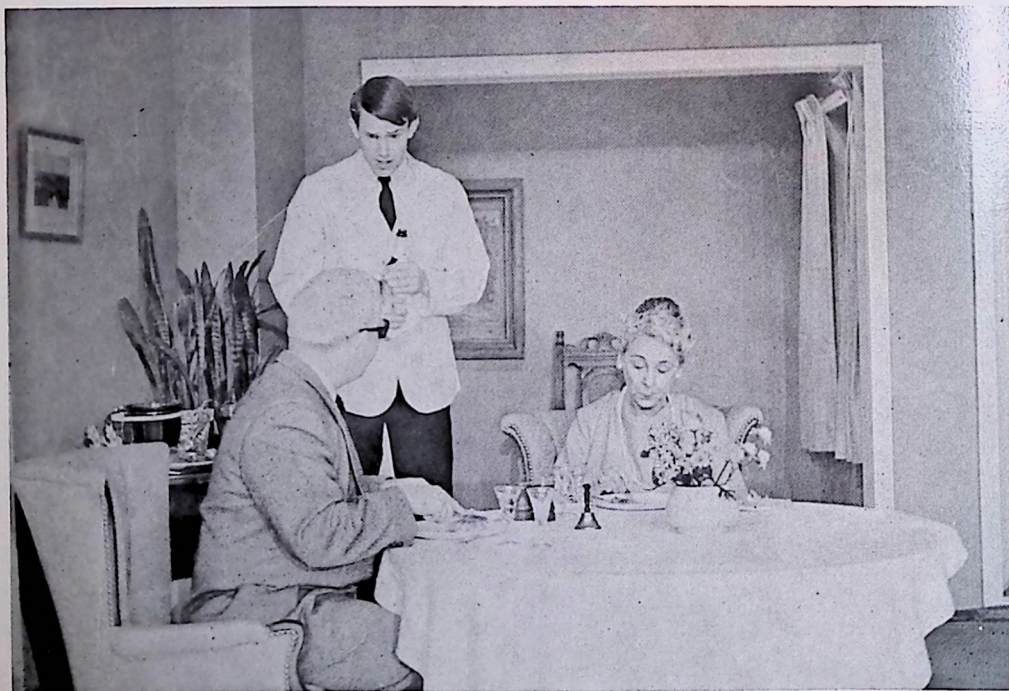
ABOVE: Toni Martin and Frank Hammond in "Antigone." Western Kentucky State College, Dr. R. H. Miller, director. BELOW: Sally Lambert, Leo Burmester, Steve Shaikun, Tara Jones, and Randy Moore in "Bye Bye Birdie." Western Kentucky State College, Dr. R. H. Miller, director.



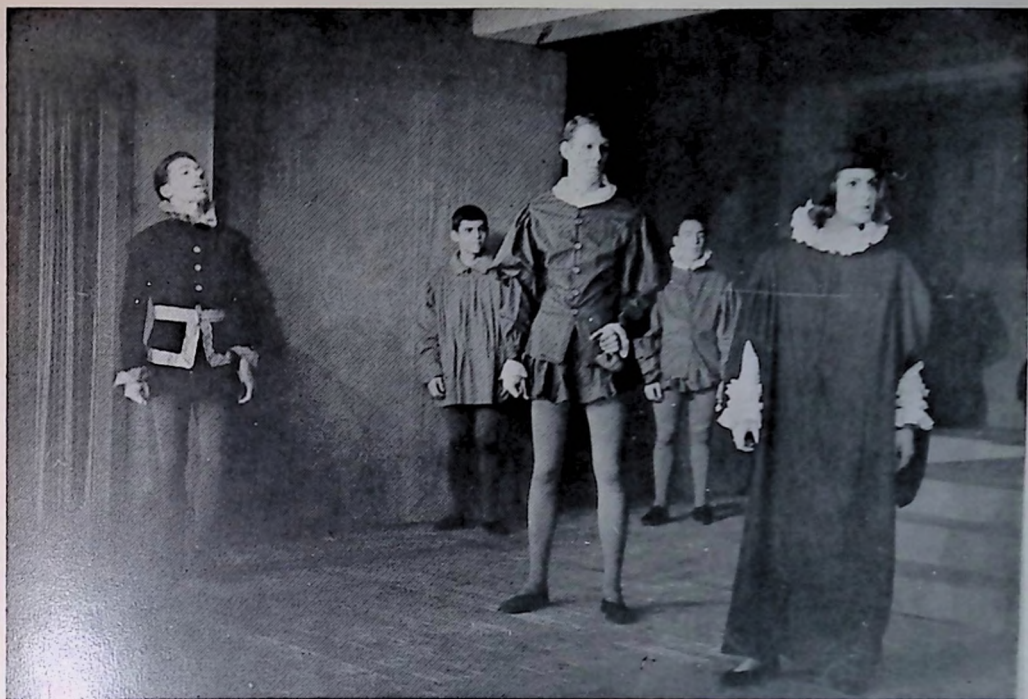




ABOVE: Barbara Wright and Larry Roher in "Camino Real," directed by Hugh McCausland, Washburn University, Topeka, Kansas. BELOW: Don Longren, Fred Eberhart and Mabel Remmers in "The Chalk Garden," Washburn University, Topeka, Kansas, directed by Hugh G. McCausland.







Kathleen and Larry Roher in the trial scene from "Merchant of Venice," Hugh G. McCausland, director, Washburn University.

ETA THETA, Washburn University, Topeka, Kans. Hugh McCausland, director. "Camino Real," "Merchant of Venice," and "The Garden." "Medea" was given as a concert reading. The season's dramatic awards went to Penny Hancock and Wil Loves. Chapter officers of Eta Theta were Larry Roher and Fred Eberhart.

IOTA LAMBDA, Westmar College, Le Mars, Iowa. James Fletcher, director. The major productions were "Which Way the Wind?" and "Tartuffe"; Loren Pinkerman produced "The Fantasticks." "Which Way the Wind?" was taken on tour for 14 performances. The acting awards for the year went to Lon Moon, LaVon Lehner, Neil Hindman, and Jill Ruhlman. The directing and technical awards were given to Alberta Fleming and Pat Schopert.

RHO PSI, Erskine College, Due West, S. C. Mrs. Barbara Paul directed "The Little Foxes," "The Curious Savage," and the short plays, "The Ugly Duckling," "Hello Out There," and two modern language plays. Drama awards this season were won by Moyo Suarez, Lynda Parton, Chuck Stith, and Jennie Sue Alexander. Chapter officers were Moyo Suarez and Janie McFerrin.

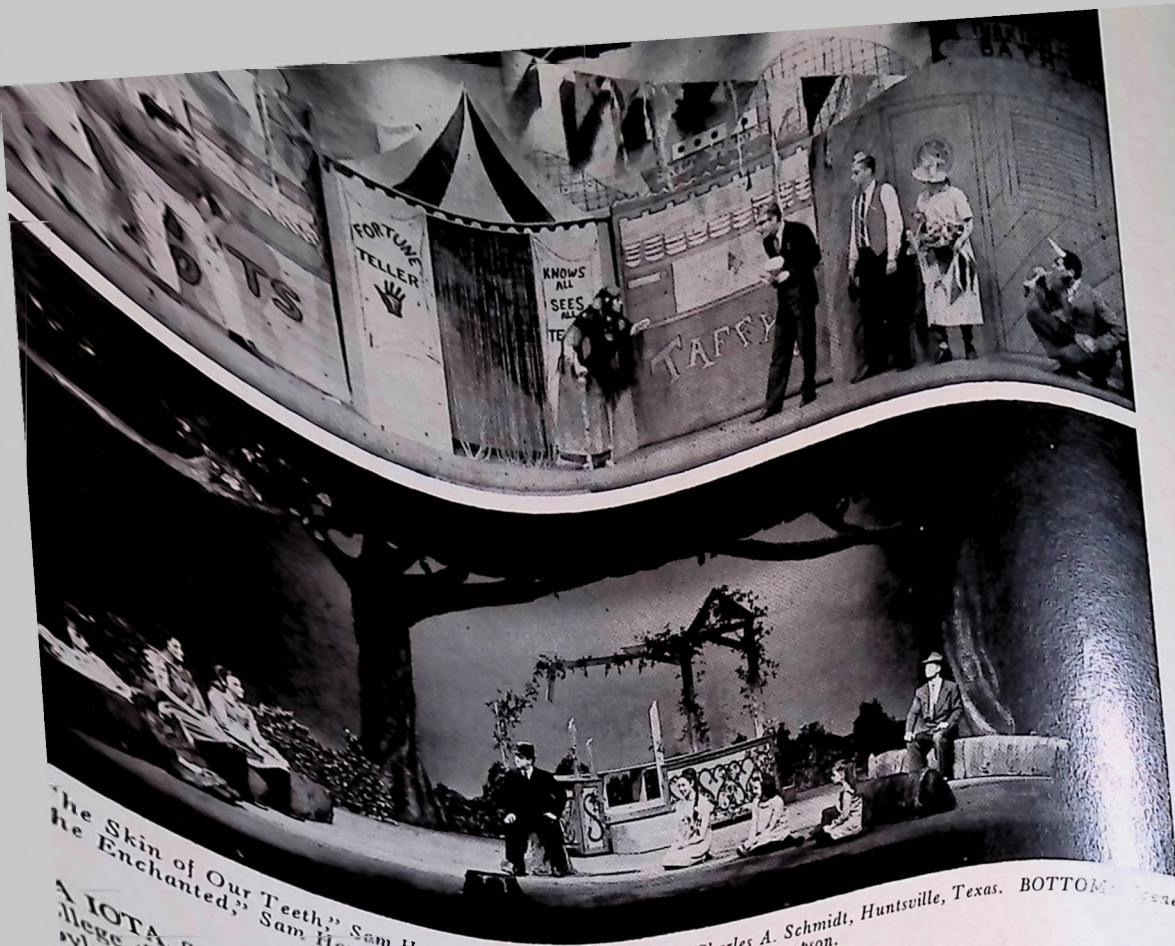
IOTA EPSILON, S. W. Texas State College, San Marcos, Texas. The College Drama Department staged "Heartbreak House," directed by Harold Tedford; "J. B." and "King Lear," directed by James G. Barton; "Twelfth Night," directed by Gresdna Doty; and the children's theatre play, "Alice in Wonderland," also directed by Gresdna Doty. Costumes for all plays were designed by Beverly Whitaker.

LAMBDA PHI, Dickinson College Mermaid Players, Carlisle, Pa. Thornton Wilder's "Our Town," directed by David Brubaker, was an unusually exciting production since it was used to dedicate our new theatre. This was followed by Shaw's "Devil's Disciple" and the two one-act plays, Beckett's "Endgame" and Fielding's "Tragedy of Tragedies." Twelve members were admitted to Lambda Phi chapter, and the chapter officers were Carol Nuetyman and Maureen D. Newton.

PI NU, Marygrove College, Detroit, Mich. Marygrove College Dramatic Society, Sister Mary Avila, director. The twentieth anniversary of "The Glass Menagerie" was observed by staging this Tennessee Williams' play. Michael Krause was the director. Other major productions were "Winnie the Pooh" and "Cinderella." A surprising highlight of our season was the success of "The Chinese Wall" in Reader's Theatre form. "Un Caprice" by de Musset was given in French and directed by Jean Andrzejewski. Cast officers were Linda Hicks and Charlotte Leisinger.

IOTA CHI, Columbia College, Columbia, S. C. In the fall of 1965 the Columbia College Players presented "The Glass Menagerie" in their new Arena theatre. The second show was the musical "Brigadoon" followed by "I remember Mama," which was given in the spring. The summer students were the backbone for the productions of "Ah, Wilderness!" and "Charley's Aunt." The latter was performed in the 120-seat arena. This year the college plans to open the new season with "Antigone" and "Death of a Salesman." Cast president was Jane H. Dawson.





TOP: "The Skin of Our Teeth," Sam Houston State College, directed by Charles A. Schmidt, Huntsville, Texas. BOTTOM: "The Enchanted," Sam Houston State College Theatre, directed by Robert Thompson.

**ALPHA IOTA**, Sam Houston State College, Huntsville, Texas. The college theatre opened the season with "An Angel Comes to Babylon," directed by Gene Traylor. "The Skin of Our Teeth" was given December, 1964, directed by Charles A. Schmidt. The next and final plays were "The Enchanted," directed by Robert Thompson and "Carnival," directed by Gaylan Collier.

"Happy Journey," Chekov's "Marriage Proposal," and "The Bald Soprano." Eta Zeta officers were Sally Smith and Susan Kind.

**LAMBDA SIGMA**, South Dakota State University, Brookings. The major plays of the season were "The Comedy of Errors," directed by Dr. Lawrence Stine, "Winterset" directed by Max Huss, and "Camelot" directed by Dr. Stine. The past season's "Easter," and "Early Frost," directed by Mr. Karl Theman in charge of the musical direction. About fifteen new members were admitted to Alpha Psi Omega. Chapter officers were Illona M. Clark and Sharon Develder.

**RHO PI**, Notre Dame College of Staten Island, Staten Island, N. Y. Little Theatre, directed by Edward C. Purring-ton. The past season's major plays were Gogol's "Inspector General," Strindberg's "Easter," and "The Bald Soprano," directed by Dorothy Neumann, and "Early Frost," directed by Lilyan Zaccaria. Seventeen members were admitted to the honor society, and chapter officers were Lilyan Zaccaria and Mary Joan Cassidy.

**GAMMA RHO**, Northwestern State College, Alva, Okla. Dr. R. Boyce Pennington, director of the College Theatre, staged "The Heiress," "The Spider," "Oklahoma," and "Down in the Valley." The production of the children's play, "Rumpelstiltskin" was a major project sponsored by Gamma Rho cast. Cast president was Kent Smith.

**ETA ZETA**, Upsala College, East Orange, N. J. Workshop 90, directed by Dr. D. G. Smith presented "Tiger at the Gates" and "The Misanthrope." Dr. R. Henson directed the Faulkner play, "As I Lay Dying." The short plays were

**ZETA THETA**, Hardin-Simmons University, Abilene, Texas. "Rehearsal For Tomorrow" by Ramsey Yelvington, a play commissioned by the The Baptist General Convention of Texas, was directed by Robert Scales and Darrel Baergen. "Tartuffe," directed by Harry Thompson, was presented in April by the HSU Theatre, and Mr. Scales directed "The Crucible" during the summer.

THE 1965 PLAYBILL





ABOVE: Scene from "Carnival," Sam Houston State College, directed by Gaylan Collier. BELOW: "An Angel Comes to Babylon" by Duerrenmatt, directed by Gene Traylor, Sam Houston State College.



# DIRECTORY OF ALPHA PSI OMEGA

## GRAND DIRECTOR

**DR. YETTA G. MITCHELL**

New York University  
Washington Square

## GRAND BUSINESS MANAGER

**DR. PAUL F. OPP**

Box 347, Fairmont, West Virginia  
(Address all communications to the Grand  
Business Mgr.)

## GRAND STAGE MANAGER

**DR. DONALD GARNER**

Eastern Illinois University  
Charleston, Illinois

- ALPHA**, Fairmont State College, Fairmont, W. Va.  
**BETA**, Marshall University, Huntington, W. Va.  
**GAMMA**, Washington & Lee University, Lexington, Va.  
**DELTA**, Acadia University, Wolfville, N. S., Canada  
**EPSILON**, Lynchburg College, Lynchburg, Va.  
**ZETA**, Western State College, Gunnison, Colo.  
**ETA**, University of Richmond, Richmond, Va.  
**THETA**, Baker University, Baldwin, Kan.  
**IOTA**, The Johns Hopkins University, Baltimore, Md.  
**KAPPA**, Ottawa University, Ottawa, Kan.  
**LAMBDA**, Washington & Jefferson College, Washington, Penna.  
**MU**, University of Texas, Austin, Texas  
**NU**, University of Houston, Houston, Texas  
**XI**, Chico State College, Chico, Calif.  
**OMICRON**, Northeast La. State, Monroe, Louisiana  
**PI**, West Virginia University, Morgantown, W. Va.  
**RHO**, Lincoln Memorial University, Harrogate, Tenn.  
**SIGMA**, Linfield College, McMinnville, Ore.  
**TAU**, Texas Technological College, Lubbock, Texas  
**UPSILON**, Kansas Wesleyan College, Salina, Kan.  
**PHI**, Colorado State College of Education, Greeley, Colo.  
**CHI**, Buena Vista College, Storm Lake, Iowa  
**PSI**, Lindenwood College, St. Charles, Mo. 63301  
**OMEGA**, Iowa Wesleyan College, Mt. Pleasant, Iowa  
**ALPHA ALPHA**, University of Mississippi, University of Mississippi  
**ALPHA BETA**, Coker College, Hartsville, S. C.  
**ALPHA GAMMA**, Morningside College, Sioux City, Iowa  
**ALPHA DELTA**, Tarkio College, Tarkio, Mo.  
**ALPHA EPSILON**, Westminster College, Fulton, Missouri  
**ALPHA ZETA**, Central College, Pella, Iowa  
**ALPHA ETA**, Geneva College, Beaver Falls, Penna.  
**ALPHA THETA**, McKendree College, Lebanon, Ill.  
**ALPHA IOTA**, Berea College, Berea, Ky.  
**ALPHA KAPPA**, University of Tampa, Tampa, Fla.  
**ALPHA LAMBDA**, Wisconsin State Univ., Superior, Wis.  
**ALPHA MU**, Emory and Henry College, Emory, Va.  
**ALPHA NU**, Colgate University, Hamilton, N. Y.  
**ALPHA XI**, Arkansas College, Batesville, Ark.  
**ALPHA OMICRON**, Bloomsburg State Coll., Bloomsburg, Pa.  
**ALPHA PI**, Millsaps College, Jackson, Miss.  
**ALPHA RHO**, West Virginia Wesleyan Coll., Buckhannon, W. Va.  
**ALPHA SIGMA**, Louisiana College, Pineville, La.  
**ALPHA TAU**, Mt. Union College, Alliance, Ohio  
**ALPHA UPSILON**, Clarion State College, Clarion, Pa.  
**ALPHA PHI**, State Teachers College, Valley City, N. D.  
**ALPHA CHI**, Shepherd State College, Shepherdstown, W. Va.  
**ALPHA PSI**, Wisconsin State University, La Crosse, Wis.  
**ALPHA OMEGA**, Augustana College, Rock Island, Ill.  
**BETA ALPHA**, Humboldt State College, Arcata, Calif.  
**BETA BETA**, St. Norbert College, West De Pere, Wisc.  
**BETA GAMMA**, Bethany College, Bethany, W. Va.  
**BETA DELTA**, New York University, Washington Square, New York  
**BETA EPSILON**, Rutgers University, New Brunswick, N. J.  
**BETA ZETA**, East Central State College, Ada, Okla.  
**BETA ETA**, Huntington College, Montgomery, Ala.  
**BETA THETA**, University of Georgia, Athens, Ga.  
**BETA IOTA**, Valparaiso University, Valparaiso, Ind.  
**BETA KAPPA**, Upper Iowa University, Fayette, Iowa  
**BETA LAMBDA**, University of Delaware, Newark, Del.  
**BETA MU**, Union University, Jackson, Tenn.  
**BETA NU**, Arizona State College, Flagstaff, Ariz.  
**BETA XI**, Concord State College, Athens, W. Va.  
**BETA OMICRON**, California State College, California, Pa.  
**BETA PI**, William Jewel College, Liberty, Mo.  
**BETA RHO**, Nebraska State Teachers Coll., Wayne, Neb.  
**BETA SIGMA**, North Dakota State College, Mayville, N. D.  
**BETA TAU**, Newberry College, Newberry, S. C.  
**BETA UPSILON**, Western New Mexico University, Silver City, N. M. 88061  
**BETA PHI**, Stephen F. Austin College, Nacogdoches, Texas  
**BETA CHI**, Defiance College, Defiance, Ohio  
**BETA PSI**, Kent State University, Kent, Ohio  
**BETA OMEGA**, Keuka College, Keuka Park, N. Y.  
**GAMMA ALPHA**, Southeastern State Coll., Durant, Okla.  
**GAMMA BETA**, Trinity University, San Antonio, Texas  
**GAMMA GAMMA**, University of Alabama, University, Ala.  
**GAMMA DELTA**, New Mexico Highlands University, Las Vegas, N. M.  
**GAMMA EPSILON**, Murray State College, Murray, Ky.  
**GAMMA ZETA**, Colorado State Univ., Ft. Collins, Colo.  
**GAMMA ETA**, Lenoir Rhyne College, Hickory, N. C.  
**GAMMA THETA**, Indiana Central College, Indianapolis, Ind.  
**GAMMA IOTA**, Saul Ross State College, Alpine, Texas  
**GAMMA KAPPA**, Edinboro State College, Edinboro, Pa.  
**GAMMA LAMBDA**, Lakeland College, Sheboygan, Wisc.  
**GAMMA MU**, St. Vincent College, Latrobe, Pa.  
**GAMMA NU**, Georgia State College, Atlanta, Ga. 30303  
**GAMMA XI**, Dickinson State College, Dickinson, N. D.  
**GAMMA OMICRON**, Texas Lutheran Coll., Seguin, Texas  
**GAMMA PI**, Tift College, Forsythe, Ga.  
**GAMMA RHO**, Northwestern State College, Alva, Okla.  
**GAMMA SIGMA**, Cascade College, Portland, Ore.  
**GAMMA TAU**, University of South Carolina, Columbia, S. C.  
**GAMMA UPSILON**, Northern Illinois University, DeKalb, Ill.  
**GAMMA PHI**, Rocky Mountain College, Billings, Mont.  
**GAMMA CHI**, Southwestern State College, Weatherford, Okla.  
**GAMMA PSI**, Roanoke College, Salem, Va.  
**GAMMA OMEGA**, Montana State Univ., Bozeman, Mont.  
**OKLA. GAMMA**, Oklahoma City University, Oklahoma City, Okla.  
**DELTA ALPHA**, University of New Brunswick, Fredericton, N. B., Canada  
**DELTA BETA**, Alma College, Alma, Mich.  
**DELTA GAMMA**, Alderson-Broadbent Coll., Philippi, W. Va.  
**DELTA DELTA**, Hampden-Sydney College, Hampden-Sydney, Va.  
**DELTA EPSILON**, North Central College, Naperville, Ill.



DELTA ZETA, University of Dubuque, Dubuque, Iowa  
DELTA ETA, Northwestern State College, Natchitoches, La.  
DELTA THETA, State Teachers College, Minot, N. D.  
DELTA IOTA, Centenary College, Shreveport, Louisiana  
DELTA KAPPA, Baylor College, Belton, Texas  
DELTA LAMBDA, Northwestern College, Orange City, Iowa  
DELTA MU, Winthrop College, Rock Hill, S. C.  
DELTA NU, Florida Southern College, Lakeland, Fla.  
DELTA XI, Rensselaer Polytechnic Inst., Troy, N. Y.  
DELTA OMICRON, Doane College, Crete, Neb.  
DELTA PI, California State Polytechnic College, San Luis Obispo, Calif.  
DELTA RHO, Russell Sage College, Troy, N. Y.  
DELTA SIGMA, Bethel College, North Newton, Kan.  
DELTA TAU, Ursinus College, Collegeville, Pa.  
DELTA UPSILON, Texas Christian Univ., Fort Worth, Texas  
DELTA PHI, Slippery Rock State College, Slippery Rock, Pa.  
DELTA CHI, Panhandle Agri. and Mech. College, Goodwell, Okla.  
DELTA PSI, Mississippi State College, Columbus, Miss.  
DELTA OMEGA, Judson College, Marion, Ala.  
DELTA ALPHA, Abilene Christian College, Abilene, Texas  
DELTA BETA, Stout State University, Menomonie, Wis.  
DELTA GAMMA, Simpson College, Indianola, Iowa  
DELTA DELTA, Arkansas State Teachers Coll., Conway, Ark.  
DELTA EPSILON, Delta State College, Cleveland, Miss.  
DELTA ZETA, Bethany College, Lindsborg, Kan.  
DELTA ETA, University of Pittsburgh, Pittsburgh, Penna.  
DELTA THETA, Hardin Simons University, Abilene, Texas  
DELTA IOTA, Drexel Institute of Tech., Philadelphia, Pa.  
DELTA KAPPA, Salem College, Salem, W. Va.  
DELTA LAMBDA, Central Methodist College, Fayette, Mo.  
DELTA MU, University of Buffalo, Buffalo, New York 14214  
DELTA NU, State College of Education, Geneseo, N. Y.  
DELTA XI, La Verne College, La Verne, Calif.  
DELTA OMICRON, Hendrix College, Conway, Ark.  
DELTA PI, Mercer University, Macon, Ga.  
DELTA RHO, State Teachers College, Florence, Ala.  
DELTA SIGMA, Stonehill College, North Easton, Mass.  
DELTA TAU, Texas Western College, El Paso, Texas  
DELTA UPSILON, Heidelberg College, Tiffin, Ohio  
DELTA PHI, Eastern Ky. State College, Richmond, Ky.  
DELTA CHI, Union College, Barbourville, Ky.  
DELTA PSI, Colo. Woman's College, Denver 20, Col.  
DELTA OMEGA, Lewis College, Lockport, Ill.  
DELTA ALPHA, Marietta College, Marietta, Ohio  
TENN ETA, Milligan College, Milligan College, Tenn.  
IDAHO ETA, College of Idaho, Caldwell, Idaho  
INDIANA ZETA, Ball State College, Muncie, Ind. 47306  
CAP AND BELLS, St. Joseph's College, Philadelphia 31, Penna.  
COLO. ZETA, Southern Colo. State College, Pueblo, Colo.  
COLO. ETA, Ft. Lewis A. and M. College, Durango, Colo.  
KY. LAMBDA, Kentucky Wesleyan College, Owensboro, Ky.  
OKLA. GAMMA, Oklahoma City University, Oklahoma City, Okla.  
VT. ETA, Norwich University, Northfield, Vermont  
ETA BETA, Carson Newman College, Jefferson City, Tenn.  
ETA GAMMA, Virginia Polytechnic Inst. Blacksburg, Va.  
ETA DELTA, Central State College, Stevens Point, Wis.  
ETA EPSILON, Spring Hill College, Mobile, Ala.  
ETA ZETA, Upsala College, East Orange, N. J.  
ETA ETA, Mary Washington College, Fredericksburg, Va.  
ETA THETA, Washburn University, Topeka, Kan.  
ETA IOTA, West Texas State College, Canyon, Texas  
ETA KAPPA, Northern Montana College, Havre, Montana  
ETA LAMBDA, E. Montana College of Ed., Billings, Mont.  
ETA MU, Little Rock University, Little Rock, Ark.  
ETA NU, Meredith College, Raleigh, N. C.  
ETA XI, Thiel College, Greenville, Pa.  
ETA OMICRON, Carthage College, Kenosha, Wisconsin  
ETA PI, Mississippi State University State College, Miss.  
ETA RHO, West Liberty State College, West Liberty, W. Va.  
ETA SIGMA, State Teachers College, Troy, Ala.  
ETA TAU, Wisconsin State University, Platteville, Wisconsin  
ETA UPSILON, Bridgewater College, Bridgewater, Va.  
ETA PHI, Youngstown University, Youngstown, Ohio  
ETA CHI, Pacific University, Forest Grove, Ore.  
ETA PSI, Seattle Pacific College, Seattle 99, Wash.  
ETA OMEGA, Harding College, Searcy, Ark.  
THETA ALPHA, Glenville State College, Glenville, W. Va.  
THETA BETA, Georgia State College for Women, Milledgeville, Ga.  
THETA GAMMA, La Grange College, La Grange, Ga.  
THETA DELTA, The University of Tenn., Knoxville, Tenn.  
THETA EPSILON, McPherson College, McPherson, Kan.  
THETA ZETA, Lock Haven State College, Lock Haven, Pa.  
THETA ETA, Hood College, Frederick, Maryland  
THETA THETA, Waynesburg College, Waynesburg, Pa.  
THETA IOTA, Western Carolina College, Cullowhee, N. C.  
THETA KAPPA, San Francisco State Coll., San Francisco, Calif.  
THETA LAMBDA, Georgia Southern Coll., Statesboro, Ga.  
THETA MU, University of Minnesota, Duluth, Minn.  
THETA NU, Oakland City College, Oakland City, Ind.  
THETA XI, D. of C. Teachers College, Washington, D. C.  
THETA OMICRON, Texas Wesleyan College, Fort Worth, Texas  
THETA PI, Pacific Lutheran College, Parkland, Wash.  
THETA RHO, Whitworth College, Spokane, Wash.  
THETA SIGMA, Missouri Valley College, Marshall, Mo.  
THETA TAU, Univ. of Southwestern Louisiana, Lafayette, La.  
THETA UPSILON, Radford State College, Radford, Va.  
THETA PHI, Susquehanna University, Selingsgrove, Pa.  
THETA CHI, Eastern Oregon College, La Grande, Ore.  
THETA PSI, Hastings College, Hastings, Neb.  
THETA OMEGA, State University of N. Y., Fredonia, N. Y.  
IOTA ALPHA, Pembroke State College, Pembroke, N. C.  
IOTA BETA, Wisconsin State University, River Falls, Wis.  
IOTA GAMMA, Cedar Crest College, Allentown, Pa.  
IOTA DELTA, McMurray College, Abilene, Texas  
IOTA EPSILON, S. W. Texas State College, San Marcos, Texas  
IOTA ZETA, Mercyhurst College, Erie, Pa.  
IOTA ETA, C. W. Post College, Greenvale, N. Y.  
IOTA THETA, Moravian College, Bethlehem, Pa.  
IOTA IOTA, Sam Houston State College, Huntsville, Texas  
IOTA KAPPA, Davidson College, Davidson, N. C.  
IOTA LAMBDA, Westmar College, Lemars, Iowa  
IOTA MU, Arkansas A. M. and N. College, Pine Bluff, Ark.  
IOTA NU, Immaculata College, Immaculata, Pa.  
IOTA XI, Incarnate Word College, San Antonio, Texas  
IOTA OMICRON, State Teachers College, East Stroudsburg, Pa.  
IOTA PI, Our Lady of the Lake College, San Antonio, Texas  
IOTA RHO, Coe College, Cedar Rapids, Iowa  
IOTA SIGMA, Maryland State College, Towson, Maryland  
IOTA TAU, Longwood College, Farmville, Va.  
IOTA UPSILON, Belhaven College, Jackson, Miss.  
IOTA PHI, American University, Washington, D. C.  
IOTA CHI, Columbia College, Columbia, S. C.  
IOTA PSI, Manchester College, North Manchester, Ind.  
IOTA OMEGA, Davis-Elkins College, Elkins, W. Va.  
KAPPA ALPHA, Berry College, Mount Berry, Ga.  
KAPPA BETA, Gannon College, Erie, Pa.  
KAPPA GAMMA, S. W. Missouri State College, Springfield, Mo.  
KAPPA DELTA, Bethel College, McKenzie, Tenn.  
KAPPA EPSILON, Briarcliff College, Sioux City, Iowa  
KAPPA ZETA, Fenn College, Cleveland, Ohio  
KAPPA ETA, Ferris Institute, Big Rapids, Mich.  
KAPPA THETA, Central Michigan State University, Mt. Pleasant, Mich.  
KAPPA IOTA, Southwestern College, Memphis, Tenn.  
KAPPA KAPPA, University of Portland, Portland, Ore.  
KAPPA LAMBDA, St. Andrews College, Laurinburg, North Carolina  
KAPPA MU, Oregon College of Education, Monmouth, Ore.  
KAPPA NU, West Virginia Institute of Technology, Montgomery, W. Va.  
KAPPA XI, Frostburg State College, Frostburg, Md.  
KAPPA OMICRON, Belmont College, Nashville, Tenn.  
KAPPA PI, Greensboro College, Greensboro, N. C.  
KAPPA RHO, Georgetown College, Georgetown, Ky.

KAPPA SIGMA, N. W. Missouri State Coll., Maryville, Mo.

KAPPA TAU, Idaho State College, Pocatello, Idaho

KAPPA UPSILON, Eastern New Mexico University, Portales, N. M.

KAPPA PHI, Texas College of Arts and Ind., Kingsville, Texas

KAPPA CHI, Lewis and Clark College, Portland, Ore.

KAPPA PSI, William Penn College, Oscaloosa, Iowa

KAPPA OMEGA, Wayland Baptist College, Plainview, Texas

LAMBDA ALPHA, Blue Mountain College, Blue Mountain, Miss.

LAMBDA BETA, Keene State College, Keene, N. H.

LAMBDA GAMMA, Middle Tennessee State College, Murfreesboro, Tenn.

LAMBDA DELTA, Morris Harvey College, Charleston, W. Va.

LAMBDA EPSILON, East Tennessee State University, Johnson City, Tenn.

LAMBDA ZETA, Appalachian State College, Boone, N. C.

LAMBDA ETA, Drew University, Madison, N. J.

LAMBDA THETA, Anderson College, Anderson, Ind.

LAMBDA IOTA, Midland College, Fremont, Neb.

LAMBDA KAPPA, Wagner College, Staten Island, N. Y.

LAMBDA LAMBDA, Arkansas State College, State College, Ark.

LAMBDA MU, Wartburg College, Waverly, Iowa

LAMBDA NU, University of Southern Miss., Hattiesburg, Miss.

LAMBDA XI, Ft. Hays Kansas State Coll., Hays, Kan.

LAMBDA OMICRON, Elon College, Elon, N. C.

LAMBDA PI, Villanova University, Villanova, Pa.

LAMBDA RHO, Central State College, Edmond, Okla.

LAMBDA SIGMA, South Dakota State Coll., Brookings, S. D.

LAMBDA TAU, Emmanuel College, Boston, Mass.

LAMBDA UPSILON, Mansfield State Coll., Mansfield, Pa.

LAMBDA PHI, Dickinson College, Carlisle, Pa.

LAMBDA CHI, University of Omaha, Omaha, Neb.

LAMBDA PSI, Tusculum College, Greenville, Tenn.

LAMBDA OMEGA, State University College, Oneonta, N. Y.

MU ALPHA, Hillsdale College, Hillsdale, Mich.

MU BETA, Emory University, Emory University, Ga.

MU GAMMA, Northeastern State College, Tahlequah, Okla.

MU DELTA, New Mexico A. & M. College, University Pk., New Mex.

MU EPSILON, Adams State College, Alamosa, Colo.

MU ZETA, Austin Peay State College, Clarksville, Tenn.

MU ETA, Texas State College, Commerce, Texas

MU THETA, John Carroll University, Cleveland, Ohio

MU IOTA, Oswego State College, Oswego, N. Y.

MU KAPPA, Sacramento State College, Sacramento, Calif.

MU LAMBDA, Western Ky. State College, Bowling Green, Ky.

MU MU, Beaver College, Jenkintown, Pa.

MU NU, Francis T. Nicholls State College, Thibodaux, Louisiana

MU XI, Boston University, Boston, Mass.

MU OMICRON, Memphis State University, Memphis, Tenn.

MU PI, Creighton University, Omaha, Neb.

MU RHO, Rhode Island College, Providence, R. I. 02908

MU SIGMA, Albright College, Reading, Pa.

MU TAU, Central Wash. College of Ed., Ellensburg, Wash.

MU EPSILON, Lycoming College, Williamsport, Pa.

MU PHI, Southern State College, Magnolia, Ark.

MU CHI, Adelphi College, Garden City, L. I., N. Y.

MU PSI, Hofstra University, Hempstead, N. Y.

MU OMEGA, Duquesne University, Pittsburgh, Pa.

NU ALPHA, State Teachers College, Livingston, Ala.

NU BETA, Parsons College, Fairfield, Iowa

NU GAMMA, Westminster College, New Wilmington, Pa.

NU DELTA, Saint Mary's College, Winona, Minn.

NU EPSILON, Evansville College, Evansville, Ind.

NU ZETA, Jersey City State College, Jersey City, N. J. 20017

NU ETA, Niagara University, Niagara University, N. Y.

NU THETA, Hamilton College, Clinton, N. Y.

NU IOTA, Hartwick College, Oneonta, N. Y.

NU KAPPA, Austin College, Sherman, Texas

NU LAMBDA, Notre Dame College of Md., Baltimore, Md.

NU NU, Marylhurst College, Marylhurst, Oregon

NU NU, Findlay College, Findlay, Ohio

NU XI, St. Mary's Dominican College, New Orleans, La.

NU OMICRON, Indiana State College, Indiana, Pa.

NU PI, North Georgia College, Dahlonega, Ga.

NU RHO, The College of Emporia, Emporia, Kan.

NU SIGMA, Lake Forest College, Lake Forest, Ill.

NU TAU, Carroll College, Waukesha, Wis.

NU UPSILON, Kearney State College, Kearney, Neb.

NU PHI, Morgan State College, Baltimore, Md.

NU CHI, Northeastern University, Boston 15, Mass.

NU PSI, Newark College of Rutgers University, Newark, N. J.

NU OMEGA, College of St. Teresa, Winona, Minn.

SCARLET MASQUE CAST, Wabash College, Crawfordsville, Ind.

PI ALPHA, Eastern Michigan University, Ypsilanti, Mich.

PI BETA, Mount Mary College, Milwaukee, Wis.

PI GAMMA, McNeese State College, Lake Charles, La.

PI DELTA, Midwestern University, Wichita Falls, Texas

PI EPSILON, Gettysburg College, Gettysburg, Pa.

PI ZETA, St. Francis College, Brooklyn 1, N. Y.

PI ETA, Birmingham Southern College, Birmingham, Ala.

PI THETA, Guilford College, Greensboro 10, N. C.

PI IOTA, Southern Oregon College of Education, Ashland, Ore.

PI KAPPA, David Lipscomb College, Nashville, Tenn.

PI LAMBDA, Illinois College, Jacksonville, Ill.

PI MU, Brooklyn College, Brooklyn, N. Y.

PI NU, Marygrove College, Detroit, Mich.

PI XI, Nebraska State College, Chadron, Neb.

PI OMICRON, Lamar State College of Technology, Beaumont, Texas

PI PI, Converse College, Spartanburg, S. C.

PI RHO, Friends University, Wichita, Kansas

PI SIGMA, Mercy College, Detroit, Mich.

PI TAU, Pennsylvania State College, Shippensburg, Pa.

PI UPSILON, Tenn. Polytechnic Inst., Cookeville, Tenn.

PI PHI, Springfield College, Springfield, Mass.

PI CHI, Mississippi College, Clinton, Miss.

PI PSI, State College at Westfield, Westfield, Mass.

PI OMEGA, Sterling College, Sterling, Kansas

RHO ALPHA, Pfeiffer College, Misenheimer, N. C.

RHO BETA, Boston State College, Boston 15, Mass.

RHO GAMMA, Martin Branch, Univ. of Tennessee, Martin, Tenn.

RHO DELTA, Black Hills State Teachers College, Spearfish, S. D.

RHO EPSILON, Valdosta State College, Valdosta, Ga.

RHO ZETA, Fairleigh Dickinson University, Madison, N. J.

RHO ETA, Lebanon Valley College, Annville, Pa.

RHO THETA, Paterson State College, Wayne, New Jersey

RHO IOTA, Eastern Washington College, Cheney, Washington

RHO KAPPA, Worcester Polytechnic Inst., Worcester, Mass.

RHO LAMBDA, Framingham State College, Framingham, Mass.

RHO MU, West Chester State College, West Chester, Pa.

RHO NU, Glassboro State College, Glassboro, N. J.

RHO XI, University of Corpus Christi, Corpus Christi, Texas

RHO OMICRON, Sioux Falls College, Sioux Falls, S. D.

RHO PI, Notre Dame College Staten Island, Staten Island, N. Y.

RHO RHO, Monmouth College, West Long Branch, New Jersey

RHO SIGMA, Millersville State College, Millersville, Pa.

RHO TAU, Luther College, Decorah, Iowa

RHO UPSILON, Kutztown State College, Kutztown, Penna.

RHO PHI, Grand Canyon College, Phoenix, Ariz.

RHO PSI, Erskine College, Philadelphia 31, Penna.

RHO CHI, St. Joseph's College, Due West, South Carolina

RHO OMEGA, Notre Dame College, Cleveland, Ohio

SIGMA ALPHA, Oklahoma Christian Coll., Oklahoma City, Okla.

SIGMA BETA, Principia College, Elmhurst, Ill.

SIGMA GAMMA, North Tex. State Univ., Denton, Texas

SIGMA DELTA, Viterbo College, La Crosse, Wis.

SIGMA EPSILON, East Carolina College, Greenville, N. C.

SIGMA ZETA, Randolph-Macon College, Ashland, Va.

SIGMA ETA, Merrimack College, North Andover, Mass.

SIGMA THETA, Xavier University, Cincinnati, Ohio 45207

SIGMA IOTA, Dana College, Blair, Nebr.

SIGMA KAPPA, California Western Univ., 3902 Lomaland Dr., San Diego, Calif. 92106

SIGMA LAMBDA, La. State Univ. in New Orleans, New Orleans, La.

SIGMA MU, Pan American College, Edinburg, Texas



# Triumph of the Jewelers Art

## YOUR BADGE —

a triumph of skilled and highly trained Balfour craftsmen is a steadfast and dynamic symbol in a changing world.



**WEAR YOUR PIN WITH PRIDE  
AS IT REFLECTS THE RICH TRADITIONS  
OF YOUR FRATERNITY LIFE.**

### ALPHA PSI OMEGA PRICE LIST EFFECTIVE, JAN., 1966:

Standard plain badge, 10K yellow gold.....	\$ 6.00
Standard plain badge, Balfour quality.....	4.25
Close set pearl badge, 10k.....	10.50
Crown set pearl badge, 10k.....	14.50
Crown set pearl, 3 ruby points.....	16.00
Standard key, 10k yellow gold.....	8.25
Standard key, Balfour quality..... (Standard key-pin, \$5.25)	4.25
Standard key pin, 10K.....	9.25
Coat-of-arms guard.....	1.75
Coat-of-arms guard, 10k.....	3.00

Insignia listed are carried in stock for IMMEDIATE SHIPMENT.

Federal excise tax has been dropped, but include any state sales or use tax in addition to ALL prices.

### REGULATIONS

All orders must be sent directly to your National Headquarters.

Write for complete insignia price list  
OFFICIAL JEWELER TO ALPHA PSI OMEGA



*L. G. Balfour Company*  
ATTLEBORO MASSACHUSETTS

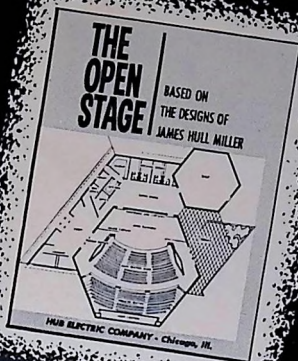
IN CANADA L G BALFOUR COMPANY, LTD. MONTREAL AND TORONTO

# OPEN STAGE THEATRE

AN EXCITING 50th  
ANNIVERSARY

REFERENCE MANUAL FROM HUB

BASED ON THE DESIGN PRINCIPLES OF JAMES HULL MILLER



Four major sections on 72 pages, covering all aspects of Open Stage design and staging.

This important manual is free to drama and speech teachers, administrators, architects and engineers. Available to students at \$1.00 per copy. Write for Hub Bulletin 109, on your letterhead.

Also included are:

- Design of the Open Stage
- Open Stage Scene Design
- Backstage Projection System
- Accessory Curtains
- Lighting and Sound equipment
- Six typical theatre designs

## HUB STAGE LIGHTING AND LIGHTING CONTROL SYSTEMS

Let Hub assist you in achieving the very best in stage lighting control regardless of the size of your budget or the size of your stage. Hub design engineering will tailor-make recommendations to fit your exact requirements . . . at no obligation to you.



### OTHER HUB BULLETINS

- EC-58—The Elementary School Stage
- SL-56—The High School and College Stage
- 102—The Open Stage Theatre

Your choice of six other Hub Bulletins, written by leading theatre designers and lighting consultants . . . all free to you.

- 104—The Children's Theatre
- 105—New School Stages for Old
- 107—Little Theatres from Modest Spaces



## HUB ELECTRIC COMPANY, Inc.

2255 West Grand Avenue, Chicago, Illinois 60612

Over 50 years of Service to the Educational Theatre  
Resident engineers in principal cities