

# The PLAYBILL

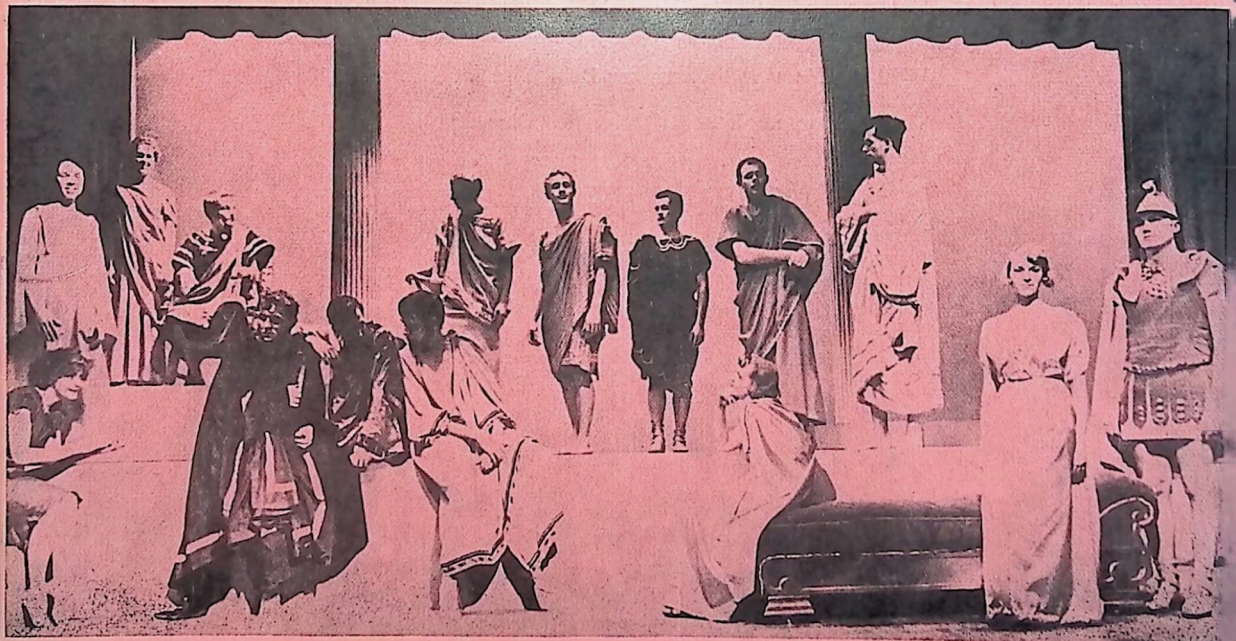
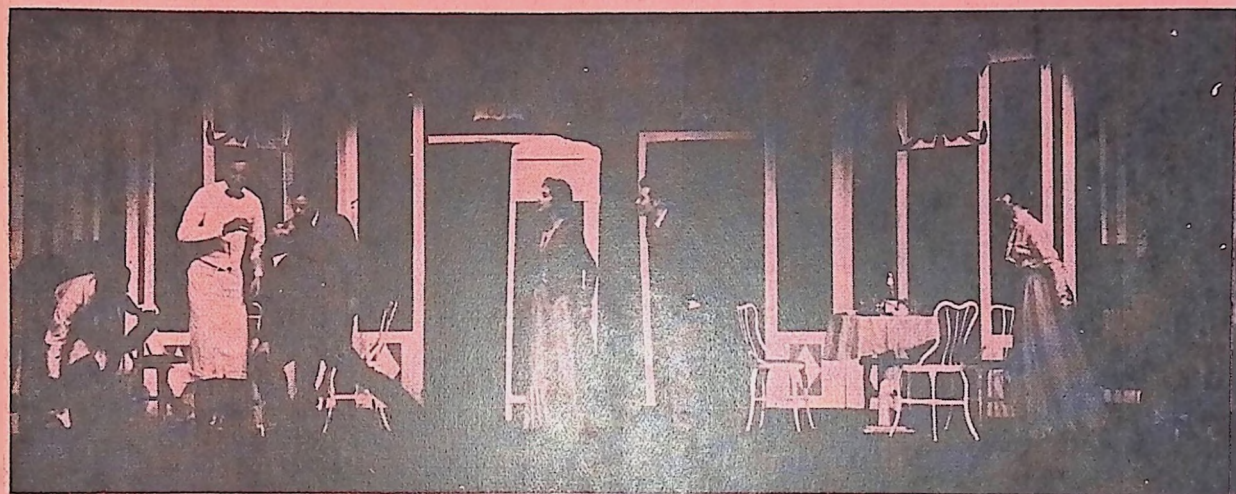
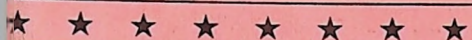


ALPHA PSI OMEGA

19



61



## TABLE OF CONTENTS

★ ★ ★

Professor Stump's Dream Becomes a Reality.....	3
by William Zuccherro	
Southwest Missouri Makes USO Tour.....	5
by Duane Hunt, Kappa Gamma	
Campus-Wide Effort Honors Two.....	6
by Kathleen Ladner and William O'Dell	
Children's Theatre With College Players.....	8
by Dr. Dorothy Stolp	
Baylor University Director Receives Award.....	9
by Don Garner	
Northwestern College Cast Installed.....	9
New College Theatre at Wartburg College.....	11
by Kathryn Koob, Lambda Mu	
Notes on Ionesco and "THE KILLER".....	12
by Dr. Gerald D. Larson	
Maskrafters Receive Good Reviews.....	15
by Orlin Corey	
Plays at Special Royalty Rates.....	16
What the Member Colleges are Doing.....	19
The Directory of National Officers and Chapters.....	46

### COVER PICTURES

Top — Scenes from "THE MATCHMAKER" by Thornton Wilder, directed by Dr. Leslie Irene Coger, Southwest Missouri State College, Springfield, Mo.

Lower picture — "CAPACITY FOR WINGS," a new play by M. C. Kurer, directed by Don Tornquist, Augustana College, Rock Island, Ill. (Feb. 1961). Setting by Ford Larsen, Womens costumes designed by Gail Englund. (L to R) Nancy Salen, Janice Holcomb, Joan Lindstrom, Dean Peterson, Arnold Blatt, George Nance, Ford Larsen, Robert Larson, Eldon Arden, Kenneth Beausang, Dagny Hilstrom, James Storms, Ralph Peterson, Solveig Leraas, John Almberg.



---

# *The* PLAYBILL

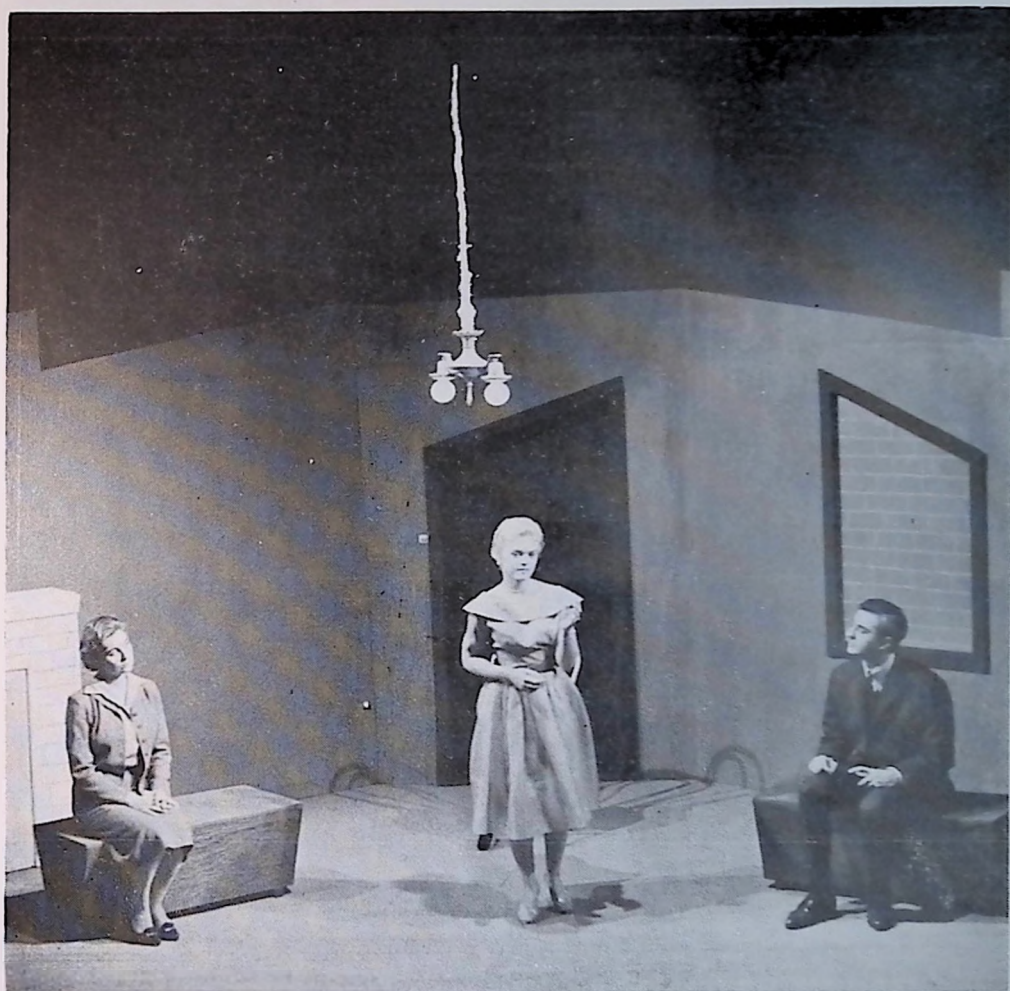
A YEAR BOOK OF COLLEGE DRAMATICS

DR. PAUL OPP, *Editor*

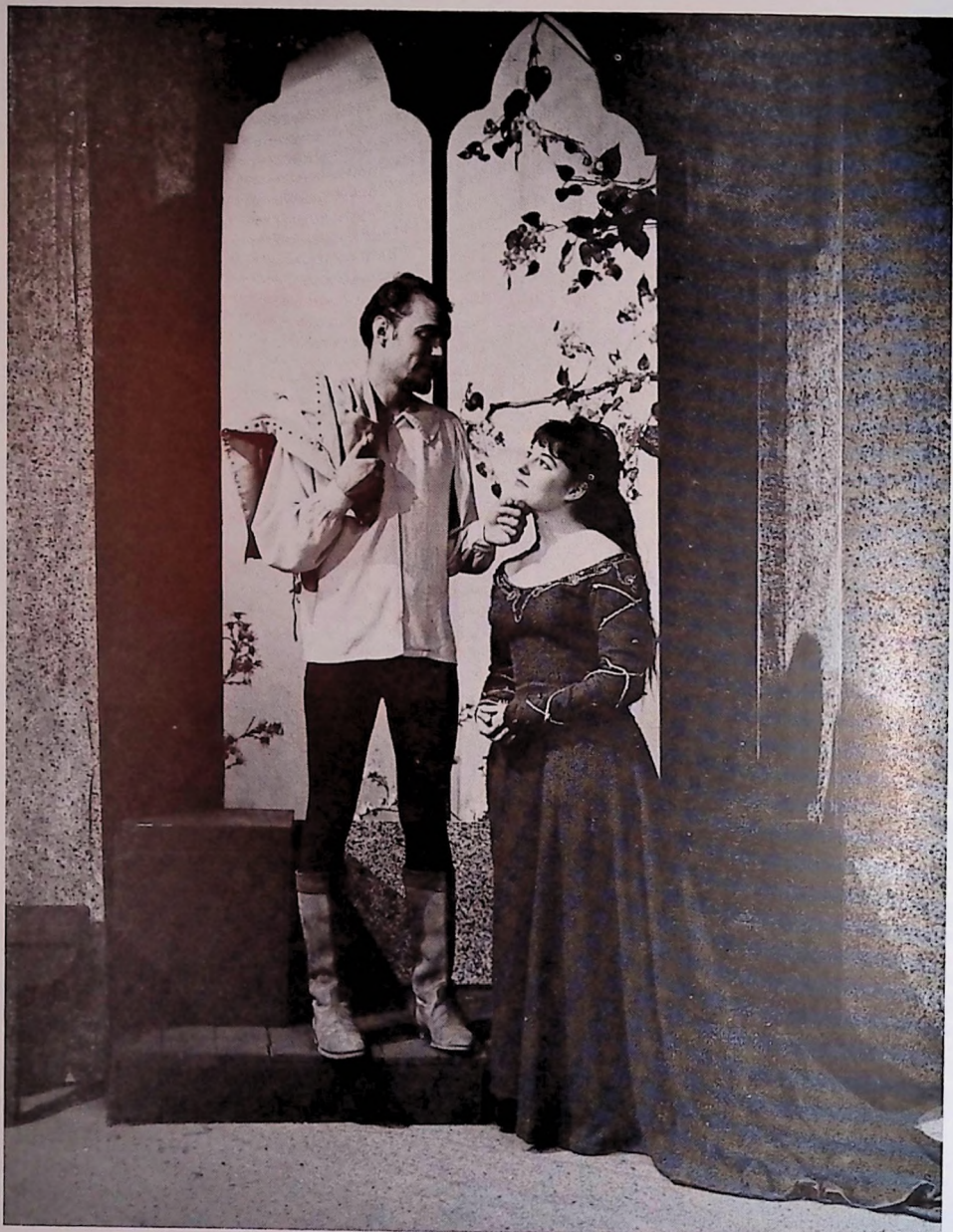
*A Publication Devoted to College Plays and How to Stage Them*

1961

---



Paula Minter, Kay Clifton and Erik Reeves in a scene from "NO EXIT", by Jean Paul Sartre, direction and set design by Dr. Rosemary Owens, East Texas State College, Commerce, Texas.



Scene from the "Lady's not for Burning" by Christopher Fry, directed by Prof. David F. Brubaker, Dickinson College, Carlisle, Pa. L to R. Wayne Claeren and Jane Endrizzi.



## The PLAYBILL

*Published Annually*

### ALPHA PSI OMEGA DRAMATIC FRATERNITY

*Dr. Paul P. Opp, Grand Business Manager,*

*Box 347, Fairmont, W. Va.*

*Address Communications to Business Manager*

*The purpose of THE PLAYBILL is to afford college and university dramatic organizations opportunity to acquaint themselves with what is being done by their contemporaries and to serve the Fraternity as an official organ.*

# PROF. STUMP'S DREAM BECOMES A REALITY

by William H. Zucchero

On the evening of November 2, 1960, a thirty-year old dream came true on the campus of Kent State University in Kent, Ohio. Permanent theatre facilities for the University Theatre had been envisioned as early as 1930 by the late Professor E. Turner Stump, and when that dream became a reality the reality was appropriately named "The E. Turner Stump Theatre." Professor Stump served in the national office of Grand Director from the inception of Alpha Psi Omega until his death in 1953. When he came to the Kent campus in 1930, Professor Stump brought with him a dream of a physical plant for speech training which would include a modern, well-equipped theatre. Drawings of his own design were revised from year to year keeping them abreast of advancing trends in theatre architecture. When, in 1956, the present University Theatre staff was asked to give suggestions to the architect concerning the functional features of a projected new theatre, Professor Stump's plans were used as a point of departure.

When plans were initiated in the late summer of 1960 for the dedication of the new theatre facilities, a formal letter was prepared by Kent's Director of Dramatic Activities, Professor G. Harry Wright, and his staff, and presented to the Board of Trustees and the President of the University. Acting on the unanimous recommendation of the staff, the Board of Trustees announced that the theatre would be named for Professor Stump and dedicated to his memory.

The E. Turner Stump Theatre and the facilities of the University Theatre are housed in wings "B" and "C" of the new Music and Speech Center on the Kent State campus. Each of the 526 seats in this continental-styled theatre provides the audience with perfect sight-lines. A suspended sound-styled ceiling and specialized wall treatment contribute to the accoustical arrangement of the theatre.

Seated in the air-conditioned comfort of this richly decorated theatre, the audience normally faces a proscenium opening of sixty feet by twenty feet; however, the arrangement of the two side

stages and the rigging and the stage draperies make the opening flexible enough to serve the most spectacular production as well as the smallest interior settings. The walls of the auditorium are a soft gold in color, warmly accented by the chocolate of the act curtain, grand drape, and side-stage curtains.

The stage measures one-hundred feet by forty-five feet with a gridiron height of sixty-eight feet. The stage floor contains sixteen traps which can be used in any combination to provide for such requirements as the "gravedigging" scene in *Hamlet* or the appearance of Mephistopheles in *Faust*. When the traps are completely removed, the thirty-two by sixteen foot opening should adequately service the swimming pool necessary for *Wish You Were Here*. In addition, a modest apron, removable stairs, and a concealed orchestra pit add to the flexibility of the Stump Theatre.

The stage is equipped with sixty counter-weighted sets of lines and operates in a "T" bar track system. These lines and their attached battens are so arranged that within an average space of nine inches a drop, set piece, or complete set can be flown out of sight of the audience. In addition to the normal complement of stage draperies, there are also seven close-off tracks and curtains, a silk-screened printed drop, and a wavercrest damask olio curtain.

Productions for the initial season in the E. Turner Stump Theatre were designed to utilize as many of these facilities as conceivable. In *Cyrano de Bergerac* the entire back wall of Ragueau's bakery shop was flown; in *Electra* the stairs leading from the apron to the auditorium were used to help simulate the architectural elements of a Greek theatre; in *Pygmalion* the side stages were employed for scenes seldom used in contemporary productions of the play; in *The Tempest* Caliban made many of his entrances through a removed (but concealed) trap; and in *Six Characters in Search of an Author* units of front stairs were removed and a prompter's box was erected.



Scene from "Cyrano de Bergerac" on the spacious stage of the new E. Turner Stump Theatre, Kent State University. This classic drama, directed by Prof. G. Harry Wright, was part of the dedicatory program.

The lighting equipment seen in the E. Turner Stump Theatre represents intensive research in most recent innovations. The basic unit around which the system is designed is the silicon rectifier dimmer. The component parts of the system consist of 250 stage circuits terminating in a safe-patch interconnecting board located stage-right, a remote control console with a five-scene preset panel located in the glass-enclosed gallery to the rear of the auditorium, a beam wall for front lighting, tormentor and teaser lighting positions, and a light bridge.

The stage house contains a costume construction and dye room, scenery and property storage areas, and a large rehearsal room (currently being utilized as shop space). The theatre plant also houses a make-up room, dressing rooms complete with showers, wardrobe storage, a "green room" with fully equipped kitchen facilities, and the theatre foyer complete with box-office, snack bar, and coat check-room. In addition to the performance which links the audience, staff, crew, and actors together, an intercommunication system warns the actors of entrances, cues the various crews, and invites the audience back to the theatre for the next act.

Since the opening of the theatre audiences have viewed thirty-five performances of seven major productions and twenty-one one-act plays.

With the addition of a proposed scene shop and studio theatre, Kent State University will have one of the finest theatre plants in the country. A great deal of the credit for making this dream become a reality goes to the man for whom the theatre is named. The E. Turner Stump Theatre not only stands as a monument to the man and to theatrical activities on the Kent State campus, but also to those ideals upon which Professor Stump's professional life was based—those ideals which are so much a part of the organization which he served so capably, Alpha Psi Omega.



"Major Barbara", Wisc. State College, Superior. (L-R) Carolyn Mattis, Ray Myer, Judith Russell, Marjorie Ralsch, Joseph Novak and Lauren Nashlund; directed by Priscilla Bussan.



# SOUTHWEST MISSOURI MAKES USO TOUR

by Duane Hunt, Kappa Gamma

Southwest Missouri State College's production of Finian's Rainbow toured Europe for eight weeks during the months of April and May. In Germany and France the cast of eighteen played some thirty-five performances before armed forces personnel. The conditions under which they performed were varied. Many of the theatres were excellent, while other stations had only a small eight by six stage and nothing else. "From palaces to cow pastures" covered the range of facilities.

In many instances the cast had to perform on the floors of service clubs. Blocking had to be altered somewhat in order to provide for the audience's seeing. The cast was kept on its feet. At one point a rainstorm came to the rescue of the players. There was no water for make-up, but thirty minutes before the show went on a short rain shower came up. The cast collected water in some buckets and paper cups. If it hadn't been for the

storm, the cast would have gone on without make-up.

The relation with French and German nationals went quite well. Wherever the cast turned there were people anxious to show them interesting places and people. In Paris they were asked by the American Embassy to present the show for the English speaking students. Facilities in the student's center were quite adequate if a bit unusual. It was necessary to go out a window and crawl down a ladder to the ground and then run around the building and scamper up a ladder into a window on the other side. The cast became quite proficient at ad-libbing because entrances were frequently ill-timed.

The pace was fast and hectic, but everyone kept driving at top speed and managed to wait until they returned home before anyone suffered the ill effects of too much tension.



Award winners inspect their trophies, Annual "Albert" Awards of Texas College of Arts and Industries, Dr. Albert E. Johnson, director. Seated—Sharon Rice, Kaye Franklin, Cathi Wise, Evelyn Officer, Jerry Nunns. Standing—Walter Smith, Joe Benavides, Yolanda Castaneda, Troy Wicker, Duane Klenke, and Bob White.



Honey Bun number from "South Pacific," Northeastern University Boston, Eugene Blackman, director, Charles M. Devlin, technical director.

## CAMPUS-WIDE EFFORT HONORS TWO

by Kathleen Ladner and William O'Dell,

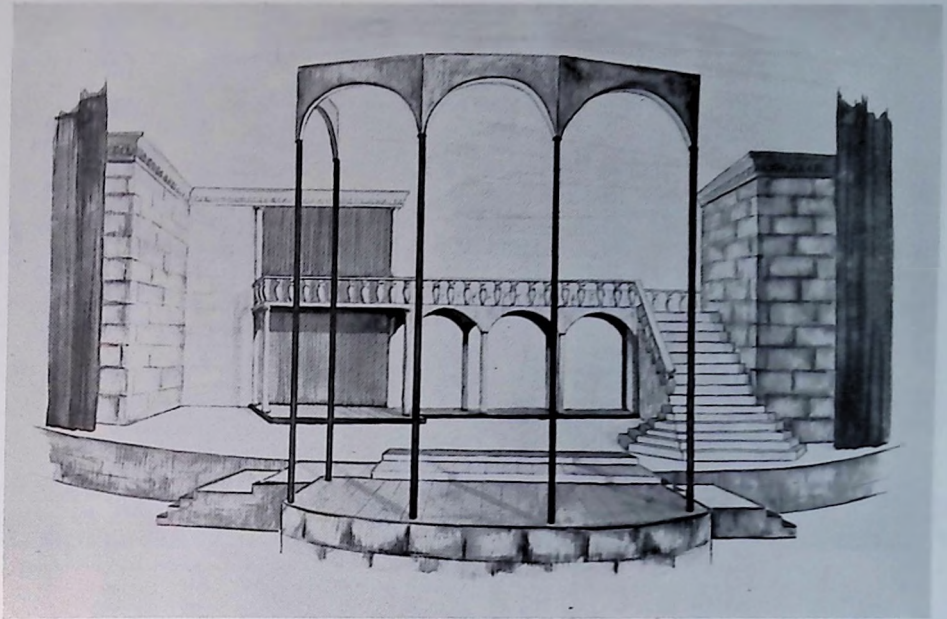
Alpha Psi Omega alumni of the past ten years honored and witnessed the progress of the Edinboro State College theatre program April 20, 1961. The alumni attended the final performance of the Shakesperean Festival production of *Much Ado About Nothing*. Later they were honored at a banquet where they in turn joined in tribute to the banquet's guest of honor, Miss Jane Ludgate. Miss Ludgate was the charter sponsor of the Gamma Kappa cast of Alpha Psi at Edinboro. She is retiring after thirty-four years of service as head of the department of speech.

The festival production and banquet climaxed ten years of devoted labor to the college and the Edinboro theatre by Mr. Lawrence Vincent, the theatre's director. The festival which featured campus-wide participation, had Dr. Dina Rees Evans as special guest speaker during the week. She spoke to the faculty and students on *Dramatics*

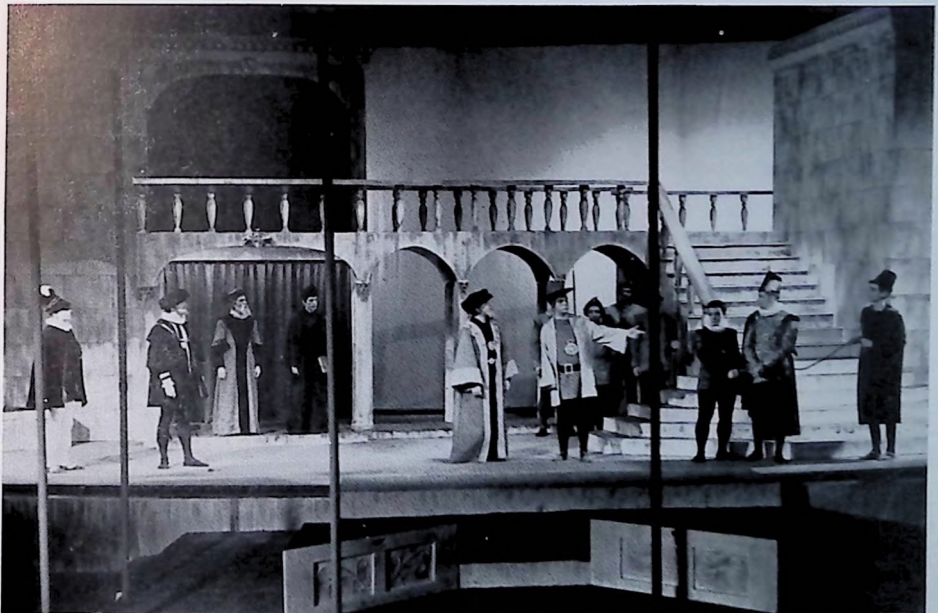
*Belongs in the School Curriculum*. An exhibit of costumes and properties were secured by the Edinboro Players from the Shakespeare theatre, Stratford, Canada.

The festival highlight, the production of *Much Ado About Nothing*, was the result of concentrated effort and cooperation of several college departments. Richard Mowrer, of the art department, designed and constructed a facsimile of the Globe stage which projected out into the auditorium. Mrs. Esther Campbell, of the music department, composed original music for the production. Art classes, theatre classes and a group of student madrigal singers, who opened each performance with a concert combined their efforts for the ten year tribute. Theatre classes and the Edinboro Players designed and made all the Italian Renaissance costumes and accessories used for the performance.





Globe Theatre projection, a stage design for Edinboro State College production of "Much Ado about Nothing" by Prof. Richard Mowrer.



Scene from "Much Ado about Nothing". Edinboro State College, Edinboro, Pa. Prof. Lawrence Vincent, director.



The cast of the annual children's play, "The Clown Who Ran Away." Directed by Jean Taylor; Technical Director Keith Kennedy. Texas College of Arts and Industries.

## CHILDREN'S THEATRE WITH COLLEGE PLAYERS

By Dorothy Stolp

The Southern Oregon College Players observed their fifth anniversary of presenting children's theatre plays with their production this season of Charlotte Chorpenning's dramatization of James Thurber's *Many Moons*. This comedy was a departure from a pattern of producing traditional fairy tales. In previous years *Aladdin*, *Cinderella*, *Rumpelstiltskin*, and *The Sleeping Beauty* have been included in the production schedule.

The SOC Players have found appreciative child audiences in Ashland and nearby Medford for their performances which are sponsored in part by the American Association of University Women. The sponsoring organizations help with touring expenses and the making of costumes, and any profits realized go to their scholarship funds. The Ashland group this year also voted an award to the member of the children's theatre company judged by the directors to be "the most valuable company member." The award, a theatre production book, went to William Strong, for his work in stage management and in designing and building special properties.

Since the productions are toured, special unit sets of eight-foot flats which can be used as interiors and exteriors with interchangeable doors, gates, and windows have been designed. Further changes of locale have been indicated by the addition of profiles and set pieces and by interchanging banners, wall hangings, and draperies. Some of the properties have been used in various combinations: the back of the throne in *Many*

*Moons* doubled in the next scene as the headboard for the bed, and single benches were later used in different ways to produce other seating arrangements.

For the past four years, the company has been building a wardrobe which can be used in a variety of plays. Basic dresses (long, full skirts and tight bodices) for the women, and tunics, long robes and knee-length breeches for the men have worked to good advantages. Changes in sleeves, trimming, headgear, and hand "props" have been used to vary the costumes from play to play and to indicate a more definite period or style. When plays have been double cast, two separate costume plots have been worked out so that it has been possible to accumulate a "backlog" of costumes in a relatively short period of time.

Many Pi Iota cast members have earned points for membership by participating in this activity. The SOC Players plan to keep a children's theatre play in their production schedule, and they hope that this account of their experiences will inspire other casts to include a play for children in their season if they do not already do so.

One of the recommendations of the 1960 White House Conference on Childhood and Youth was concerned with making good theatrical productions available to children. Alpha Psi Omega casts could assist other organizations such as the Children's Theatre Conference of the American Educational Theatre Association in making these recommendations become a reality.





Scene from "Romeo and Juliet", Lamar State College of Technology, Beaumont, Texas, George Bogush, director, Patrick Harrigan, technical director — eleven performances were given.

## Baylor University Director Receives Award

By Don Garner

Annual awards are becoming commonplace with Mr. Paul Baker, Baylor University Alpha Psi Omega cast director and director of the Dallas Theatre Center in Texas. Mr. Baker was presented the first Rodgers and Hammerstein award as the person who has contributed "most to the theatre in the Southwest" during 1960. The award, which carries a cash prize of \$1,000 and a bronze medalion, was presented to Mr. Baker on April 7, 1961, at the Brook Hollow Golf Club in Dallas by Stanley Marcus, chairman of the awards committee.

Mr. Baker was cited for his outstanding work in the experimental theatre and especially for his creation of the Dallas Theatre Center which was designed by Frank Lloyd Wright. One of fourteen persons nominated for the honor, he was chosen after six months of deliberation. The award, established last October, recognized nominations in the fields of acting, writing, direction or production in the community, college or commercial theatre.

Mr. Baker has received national recognition many times as the director of Baylor's University

Theatre. Charles Laughton and Burgess Meredith have been featured in his Shakespearean productions and have returned on occasion because of their interest in Mr. Baker's work. Laughton has said that Baker may conceivably alter the whole future trend of the theatre. Eliot Elisofon, staff photographer of LIFE, has said he is one of the most effective college teachers in the United States.

## NORTHWESTERN CHAPTER INSTALLED

The installation ceremonies for the Northwestern College Chapter were conducted in a most impressive manner by Prof. Maurice Birdsall and his students from Central College. Northwestern College is located in Orange City, Iowa. Guests included faculty advisors and students from Wartburg, Westmar, Buena Vista and Central Colleges, as well as the administrative staff of Northwestern. The Woman's Auxiliary of the college served the installation banquet at tables decorated with pink roses, amber candles and greens. Telegrams and letters of greeting were read from other colleges and fraternity officials. Mrs. H. L. England, the faculty director, is taking a year's leave of absence to work on her doctorate at the University of Minnesota.



Scene from "The Lady's Not For Burning," spring production of Southwest Mo. State College, directed by Dr. Robert Gilmore.



Sharon Harbour, Katharine Rankin, Bob Weiner in Mississippi College production of "The Matchmaker," directed by Bob Leonard.



# NEW THEATRE AT WARTBURG COLLEGE

by Kathryn Koob (Lambda Mu cast)

For many years the mecca of the stage-struck at Wartburg College was the Little Theatre. This building was a converted gymnasium, seating at the most 300 people. About three years ago a speech major was introduced at this liberal arts college in Waverly, Iowa. With the department now a full-fledged part of the college, the students and faculty began to dream of a new and more adequate building. This became a reality in the fall of 1960 with the dedication of the \$400,000 chapel-auditorium.

The dedicatory program included a Reformation pageant, **Martin Luther**. The many changes of scenes were handled quickly and efficiently with use being made of the 55 foot fly gallery and the complete system of counter-weights. Special lighting effects were also used. It was amazing to see one person on the light board handle the work that required four or five students in the Little Theatre.

For this production every inch of the large stage was used. Two alleyways open onto the apron of the stange and are used mainly for special effects. The backstage area is 74 feet wide, 32 feet deep and the proscenium opening is 42 feet. The shop is on the same level as the stage, and the large doorways opening onto the stage makes work much easier. The building is multi-purpose, and when one looks at the blueprints and specifications, or attends a convocation, concert, or movie in the building, it is apparent how much planning went into its design.

Sound and lighting are flexible. The building is completely wired for sound with a total of thirteen speakers. Any combination of speakers to any parts of the building may be used. During plays the sound equipment is used for music and special effects. Acoustics are good. Lighting can be handled by remote control with controls from the speaker's stand to dim lights for the showing of slides.

Possibilities of the new building are just beginning to be explored. With the coming year the plan is to move ahead in the realm of experimental theatre doing as much as possible with lighting. Plans for the coming year are expanding in other directions, also: an outdoor Shakespearean production; a musical in cooperation with the music department, a religious drama for Religious Emphasis

Week; the presentation of live and taped radio programs over Wartburg radio, KWAR-FM. Lambda Mu has in the past sponsored the Iowa One-Act Playwriting Contest. Each spring the three winning one-act plays have been presented by the cast and the speech department. These plays are student-written, directed and produced.

The Little Theatre will probably be used for studio production and arena theatre, as a laboratory theatre and for rehearsals. To former players it will always be a mecca, but all eyes are now focused on Wartburg's new theatre.



Front view of Wartburg College Theatre, Waverly, Iowa.

## TCU HOST FOR SOUTHEASTERN THEATRE CONFERENCE

One of the features on the program of the Southeastern Theatre Conference was a production of *Joan of Arc* by Max Mell, directed by Dr. Walter Volbach. This was the American premiere of this play and was staged October 26-28 and Nov. 1-4. Two ballet productions will be included this year in the productions of the Department of Theatre Arts of Texas Christian University, directed by Mr. David Preston.

Among the other major productions, Mr. Henry Hammack will direct *The Innocents* and *Dear Brutus*, and Dr. Volbach will direct the *Trojan Women*.

# NOTES ON IONESCO AND THE KILLER

By Dr. Gerald D. Larson

Take one part Franz Kafka, mix with sizeable portions of the Marx brothers, Laurel and Hardy, and Samuel Beckett, add a soupcon of nihilism and a dash of lost hope. Heat for a few minutes over a fire of fury and disgust at man's sheep-like qualities, and serve in a cracked dish. This serving of Ionesco will result in a burning sensation, not in the stomach, but in the heart. It also serves as an antidote for moral dyspepsia. To dispense quickly with this culinary metaphor, Eugene Ionesco is a Rumanian who lives in France. Starting rather late in life as a playwright, he has been having a vogue in the western world for the past five years. His plays have a chaotic, formless style that seems in part to be stream of consciousness. His characters people a cold world in which one can get a pie in the face or a knife in the ribs. Ionesco seems to be angered at the state of society today, not only in France, but in America and England. He does not offer the panacea of living in a proletarian commune, but he finds great fault with the customs, standards, and morals of the great middle class in which most of us live.

*The Killer* represents a transition play for Ionesco from the cold and pessimistic laughter of his earlier plays like *The Chairs*, *The Lesson*, *The New Tenant*, to the recent off-Broadway production of *The Rhinoceros*. Examination of these plays suggests that Ionesco, in *The Rhinoceros* has finally found a hero who is willing to stand up for his rights as an individual in a society which has no longer any respect for self will. The Killer has a protagonist who is just this side of being a hero. He cannot resist the forces against him. He succumbs, whereas the hero of *The Rhinoceros* refuses to give in to the animals around him.

For all that Ionesco writes with bitterness and savage satire, he is able to introduce into his plays a stylistic humor that borders on bizarre farce. The exaggeration of the actions, the mercurial temperaments, the facelessness of the crowds and the inflexibility of civil servants, all add to the laughter of his plays. The objectivity of laughter operates well in Ionesco because he will not get sentimental about any of his people. One cannot feel too sorry about man because man may not be worth the tears.

Ionesco's world is unreal, but horrifyingly with us. We may not recognize individuals, but we recognize pawns, symbols, and standards that constrict us. There is one thread throughout all of Ionesco that offers a clue to his attitude toward the world. He dislikes authority. "The air here is suffocating me," says the protagonist of *The Killer*.



Scene from "Phaedra," Greek classic play. A production of Sacramento State College

To which his friend replies, "I've come to terms." Coming to terms, to Ionesco, means resigning one's self to authority, power, that inevitably turns out to be Fascism of Communism or some other control which is anathema to man's anarchial spirit.

Seeing Ionesco is like scraping your fingernails across a blackboard. You pay your money to be ex cruciated. Obviously, then, Ionesco is not everybody's cup of strychnine—and he was not at our West Coast premiere production at Sacramento State College. A few were offended; a few were bored; but most were stimulated, excited, and provoked. In short, it stirred controversy which is so important in the theatre.

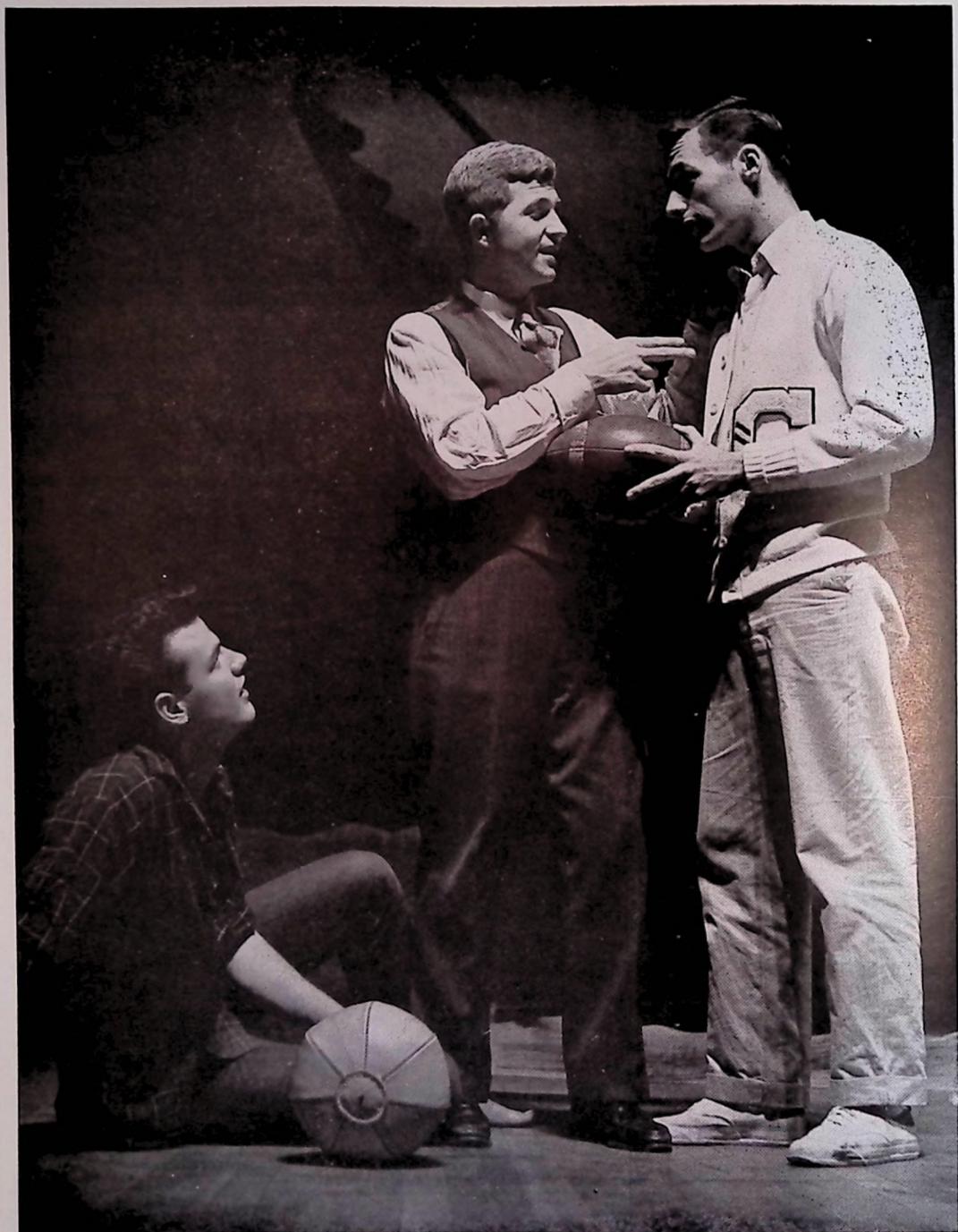
From a production point of view, there was an interesting mixture of style. Act One was completely bare of furniture; the only scenic device was a Linnebach projection of a cubistic city, a la Feininger. Furniture was rolled on and off as the script required. Act Two was divided into one part presentational theatre with actors working throughout the auditorium; the second part between the hero and his confidant was tightened into more realistic representational acting. The third act, which has circus-like qualities, used only a set of steps upstage. Groups of actors could be worked into interesting spatial designs as a result of the elevations. One could also manage one action upstage, and another downstage, so that the flow would be even at all times.

Presenting *The Killer* was magnificently challenging to the director and the actors. This new theatre, daring and controversial, may not be the answer to the decaying theatre of the past, but it serves as a welcome relief from the banalities of *The Sound of Music* and *The World of Suzie Wong*. We certainly found it so at Sacramento State.





Nancy Frazier and Kaye Franklin in a scene from "Twelfth Night", Texas College of Arts and Industries, Dr. Aiberi E. Johnson, director.



Tom Fowlkes, Eddie Harris and T. J. Noblin in the Millsaps Players production of "Death of a Salesman" by Arthur Miller, Millsaps College, Jackson Miss. directed by Prof. Lance Goss.





"OUR TOWN", directed by Harold Hunt, The Maskrafters is the oldest drama group in the state of Kentucky.

## MASKRAFTERS RECEIVE GOOD REVIEWS

by Orlin Corey

"Kentucky Colonels Made History; Audience and Scenery Were Magnetized!" This was the theatre page headline of the Brighton and Hove, England, *Herald*, after their performance. The critic continued: "The Maskrafter's visit has made local theatrical history with a production of a folk-music play, "John Henry," about a legendary strong men which captures the spirit of Moon Rocket Age American." This was the last review received by the Maskrafters of Georgetown College, Georgetown, Kentucky, at the close of their nine weeks' summer tour of Europe. But it was typical of their reception throughout their performances in Canada, the Brussels' World Fair, England and Wales. The Brighton Critic's reference to "Kentucky Colonels" came from Kentucky's Governor Albert Chandler who made Colonels of the entire company in recognition of their tour.

Invited to bring two American plays for tour to churches and theatres, the Maskrafters commissioned two original works. Orlin Corey, now of Centenary College, adapted a new version of the biblical Book of Job for performance in churches of the English Baptist Union. Jim Peyton, a graduate of Georgetown College, created a musical legend for the stage out of the ballads about

John Henry, for production in theatres associated with the British Drama League.

The critic of *The Coventry Standard*, wrote "I rate the Maskrafter presentation of... 'John Henry'... the most unusual piece of theatre I have ever seen... To give it life this extremely competent company from Georgetown, Kentucky, gave us a unique demonstration of robust voice, movement, and precision timing." "Job... was a moving experience," said the *Coventry Evening Telegraph*, "The players, wearing effective costumes and make-up masks in a mosaic design, appear as images rather than characters. They give a performance rich in sincerity." Performances were given in sanctuaries of churches in Nottingham, Great Yarmouth, Coventry, Leicester, Derby, Wales and the south coast of England.

Nearly ten thousand people attended the thirty performances given by the Maskrafters on this tour. The company went as official representatives of the Southeastern Theatre Conference. But the response of audiences and the hospitality of numerous hosts impressed the company with the fact that they represented all of the American college theatres, and the United States itself.

## PLAYS AT SPECIAL ROYALTY RATES

All the principal publishers of plays have been generous in supplying a list of titles that are available to the members of our national honorary society at special royalty rates. All payments of royalty are made direct to the publisher. Directors of dramatics are advised to conduct negotiations for royalties on plays that are not on this list with the company holding the royalty rights. An agreement on the royalty should be reached before beginning rehearsals. If forms are wanted for applying for a special royalty quoted on these plays, please write to the Grand Business Manager.

### SAMUEL FRENCH

25 West 5th Street, New York 36, N. Y.

#### Three-Act Plays

	Catalogue Rates	Special Rates
Drink to Me only	\$50	\$35
Emperor's Clothes	50	25
Escapade	50	25
Love and Let Love	50	25
Green Bough	25	20
Hay Fever	50	25
This Happy Breed	50	25
Tons of Money	25	15
Glad Tidings	50	25
Black Chiffon	50	35
The Power and the Glory	35	25
George and Margaret	25	15
Ring Around Elizabeth	25	20
Deep Blue Sea	50	25
The Vigil	35	25
I Like It Here	35	25
Magnificent Yankee (Lavery)	50	25
You Touched Me	50	25
Lace on Her Petticoat	50	25
Comic Strip	35	25
The Beautiful People	25	20
All Summer Long	50	25
A Play for Mary	35	25
Yes, My Lord	35	25
Pink String and Sealing Wax	25	20
The Gioconda Smile	35	25
It's Never Too Late	25	20
Midsummer	50	25
Girls of Summer	50	35
His and Hers	50	25
Quadrille	50	25
Ladies of the Corridor	50	25
Mademoiselle Colombe	50	25
The Confidential Clerk	50	25
To Dorothy a Son	35	25
The Guest Cottage	35	25
The Righteous Are Bold	50	25
Dragnet	35	25
The Young and Beautiful	50	25
The King's Standards	25	20
Pictures in the Hallway	50	25
Square Root of Wonderful	50	25
The Living Room	50	35
Maybe Tuesday	50	30
Natures' Way	50	30
Uncle Willy	50	30

## WALTER H. BAKER COMPANY

109 Summer St., Boston 10, Mass.

Title	Catalogue Rates	Special Rates 1st Per. 2nd Per.	
Five Little Peppers	\$ 5.00	\$ 5.00	\$ 2.50
Adventures of Huckleberry Finn, The	10.00	7.50	7.50
Adventures of Tom Sawyer, The	10.00	7.50	7.50
Matter With Mildred	25.00	20.00	15.00
Paper Plates for Papa	25.00	20.00	15.00
The Overnight Ghost	25.00	20.00	15.00
The Christies	25.00	20.00	15.00
Sing Out, Sweet Land	50.00	50.00	25.00
House of Atreus	10.00	7.50	7.50
The Barretts	25.00	20.00	15.00
Ghosts (Ginsbury)	15.00	10.00	10.00
Brontes of Harworth Parsonage, The	15.00	10.00	10.00
Connecticut Yankee	25.00	20.00	15.00
Doctor's Orders	25.00	20.00	15.00
Enchanted Cottage, The	25.00	20.00	15.00
Fellow Needs a Friend, A	25.00	15.00	10.00
First Mrs. Fraser, The	25.00	20.00	15.00
Fountain of Youth, The	25.00	15.00	10.00
Gold in the Hills	25.00	20.00	15.00
I Have Five Daughters	15.00	15.00	12.50
Inspector General, The	15.00	15.00	10.00
Jane Eyre (Carleton)	15.00	15.00	10.00
Edie-Across-the-Street	25.00	20.00	15.00
Man Who Married a Dumb Wife, The	25.00	20.00	15.00
Mary, Mary, Quite Contrary	25.00	20.00	15.00
Milestones	25.00	20.00	15.00
Mollusc, The	25.00	20.00	15.00
Monsieur Beaucaire	10.00	10.00	7.50
Old Homestead, The	25.00	15.00	10.00
Royal Occasion	25.00	20.00	15.00
Rip Van Winkle	15.00	15.00	10.00
Shubert Alley	25.00	20.00	15.00
To My Husband	25.00	20.00	15.00
Master Pierre Patelin	5.00	5.00	5.00
Hit With a Horseshoe	25.00	20.00	15.00
Miranda	25.00	20.00	15.00
Knee Deep in Trouble	10.00	7.50	5.00
Feminine Touch	15.00	15.00	10.00
Too Young, Too Old	25.00	20.00	15.00
And There Were Voices	15.00	10.00	10.00
Glad Tidings	25.00	20.00	15.00
Jump Over the Moon	25.00	20.00	15.00
Still Small Voice	25.00	20.00	15.00
Wuthering Heights	25.00	20.00	15.00
Gentlemen's Daughters	25.00	20.00	15.00
Legend of Sleepy Hollow (musical)	25.00	15.00	15.00

### The Playmakers 1962 Season Announced

New Mexico State University, University Park, New Mexico announces that the 1961-62 season will consist of the following productions: "J.B." by Archibald MacLeish, Oct. 16-21; a double bill, Dec. 4-9, "Chairs" by Ionesco and "No Exit" by Sartre, and a program of two original one-act plays by faculty members of the English Department, Jan. 8. Prof. Hershel Zohn is director of the Playmakers.





Five scenes from "THE DIARY OF ANNE FRANK", a Dominican College Players' production, directed by Sister Mary Joanna, Ph. D., St. Mary's Dominican College, New Orleans. (Lower right) Barbara Breaux as Ann Frank.



Scene from "The Far-Away Princess" by Herman Suderman, directed by Robert Douglas Hum, Lindenwood College, St. Charles, Mo.



# CAST REPORTS

## WHAT THE MEMBER-COLLEGES ARE DOING

### IOTA

#### JOHNS HOPKINS UNIVERSITY

Baltimore, Md.

With the help of the faculty director, Dr. William McClain, the officers of the Iota cast (Charles Davis, President; Chips Lickson, Vice President; Fred Teets, Secretary-Treasurer) worked with the Hopkins Barnstormers to bring about another successful year. The two major dramatic productions, *End as a Man*, directed by William Bevins, and *Mr. Roberts*, directed by Lester Wolf, were very favorably received. In addition the short play, *The Zoo Story*, which was presented as a reading, continued the tradition established in previous years. Four new members were admitted to the cast this year. They were Frank Oelschlagel, Thomas Frazier, Mike Sundermeyer, and Jeffrey Bremer.

### RHO BETA

#### BOSTON STATE COLLEGE

Boston, Mass.

The 1960-61 season was a truly impressive one at Boston State College. Our first workshop production, *The Glass Menagerie* was directed by Paul A. Zakrzewski, a senior, who also assumed the part of Tom Wingate. The selection of the *Pajama Game* to be the annual musical was a happy one, and, under the direction of Mr. Robert Guest, the play was an artistic and financial success. Presented on a double bill in March were two one-act plays—*Oh Dad, Poor Dad, Mama's Hung You in the Closet and I'm Feelin' so Sad*, a satire by Arthur L. Kopit and William Butler Yeats' fantasy, *The Land of Heart's Desire*, directed by Edward Morely. Toward the end of the season, the Drama Club chose to present Ibsen's *A Doll House*, again directed by Mr. Zakrzewski. Janice O'Leary as Nora and Edward LeClair as Dr. Rank surpassed themselves in this famous drama. Nine new members were initiated into Alpha Psi Omega. Cast officers were John McGrath and Paul Zakrzewski.

### MU OMICRON

#### Memphis State University

Memphis, Tennessee

The University Theatre, directed by Eugene Bence, presented *The Matchmaker*, *The Diary of Ann Frank*, and *Madam Butterfly*. *Julius Caesar* was staged for the Memphis 10th annual Shakespeare Festival. One-act shows were *Aria da Capo*, *The Starring Match* and *The Bald Soprano*. Thirty people attended the annual awards banquet. Cast officers were Susanne L. Smith and Gene Jackson. New officers for 1961-62 are Phil Arnout, Bennie Crosby, and Bob Gaskill.



Hal Eisenberg, Frank Wildman, Tony Parker, Fred Gordon, Lynn Phillips, and Carl Westerdahl in "*Born Yesterday*", Washington College, directed by Barbara Frey; set by Jeff Lawrence and Ann Kane.

**PI ZETA**, Washington College, Chestertown, Maryland. The Washington Players, E. Winifred Opgrande, director, presented *All My Sons*, directed by Fred Gordon and *Born Yesterday*, directed by Barbara Frey. Twelve members were admitted to Pi Zeta cast. Chapter officers were Diane Dickinson and Robert Rohdie.

**NU ETA**, Niagara University, Niagara Falls, New York. The University Players, Father D. J. Sullivan, director, enjoyed a very successful season. The feature productions were *Solid Gold Cadillac* and *Harvey*. Four students were admitted to Alpha Psi Omega. Cast president was Don Peters; secretary, Pat Casale.

**KENTUCKY LAMBDA**, Kentucky Wesleyan College, Owensboro, Kentucky. The Wesleyan Players presented *Uncle Harry* by Thomas Job, directed by Prof. Douglas Reid Sasser, and Beverly Byers directed *Separate Tables* and Kathy William Hello, *Out There*. Ten members were admitted to Alpha Psi Omega. Frances Hoagland is cast president.

**MU SIGMA**, Albright College, Reading, Pennsylvania. The Domino Club staged two major plays: *A Midsummer Night's Dream* and *Blithe Spirit* by Noel Coward, both directed by Patricia A. Hostetter.



Betty Denton as Portia and Edward Harris as Brutus in "Julius Caesar." Presented November 2-5 at Millsaps College, Directed by Lance Goss.





Scene from "Our Town", directed by Patrick H. Horrigan. Sam Houston State College, Huntsville, Texas.



"THE MOUSETRAP", Sam Houston State College, Oct. 1960, directed by Lynn Murray.

#### THETA

Baker University

Baldwin, Kansas

The fall production of the Baker Players was *Inherit The Wind* by Lawrence and Lee and the spring production was a musical comedy, a British spoof, *The Boyfriend* by Sandy Wilson. The combined efforts of the Drama department, Musical department, Economics department, Women's Physical Education department, and Art department made this production possible. The head of the Speech department and director of these productions was Mrs. Thelma Morreale. A group of one-act plays was presented as projects by the play direction class. Some of these plays were presented in an experimental theatre. Four members were initiated into Theta Cast: Cliff Brisbois, Janet Irby, Gil Merritt, and Steve Schiff. Those initiated into Baker Players, a junior dramatic organization, were Larry Poore, Jack Ballow, Barbara Erickson, Jon Vannerson, Marlan Mertes, Jean Eimas, Pat Maben, Nancy Stockwell, Paul Frary, Bill Soper, Bob Nelson, Judy Obermeier, and Judy Gentry.

#### MU GAMMA

Northeastern State College

Tahlequah, Okla.

Northeastern State College presented two major productions during the 1960-61 season. The first production was *Harvey*, a comedy by Mary Chase, and the second show was *The Bad Seed* by Maxwell Anderson. Miss Ruth Arrington, sponsor, directed both productions. The annual college Stunt Night, staged by Alpha Psi Omega, was entered by eleven campus organizations who prepared sketches on the theme, *The Good 'Ole Days*. Six new cast members were honored at the Annual Award Banquet held in the spring. Recipients of the Northeastern Oscars were: Jim Matthews, Best Actor; Colleen Cadion, Best Actress; Arnold Dotson, Best Supporting Actor; Sally Adams, Best Supporting Actress; David Budd, Best Technician; and Carl White, Special Service Award. Arnold Dotson was past president; Rennard Strickland, vice president; Colleen Cadion, secretary; and Beverly Harl, historian. New officers are Rennard Strickland, president; Beverly Harl, vice president; Sandy Deonier, secretary; and Wilda Wood, historian.



Duane Klenke, Cathi Wise, Don Howell in "Twelfth Night", directed by Albert E. Johnson. Texas College of Arts and Industries.



Scene from "The Women", Zeta Delta Cast, directed by Leona Scott, Conway, Ark.

## NU OMICRON

Indiana State College Indiana, Pennsylvania

The State College Summer Theatre productions were: Anniversary Waltz, State of the Union, Glass Menagerie, Amphitryon 38, Pety's Choice, and The Tender Trap. The fall play was The Way of the World by Congreve, and the spring plays were Epitaph for George Dillon and Where's Charley by Loesser and Abbott. Short plays were The Ugly Duckling and How He Lied to Her Husband. Where's Charley played to full houses for four nights. Gary Couch who played Charley did a tremendous job. Prof. Robert Ensly directed these productions. Twenty members were admitted to Alpha Psi Omega. Chapter officers were Will Foltz and Sylvia Kattouf.

## LAMBDA THETA

Anderson College Anderson, Indiana

The Anderson College Theatre increased the major productions from two to four this past season. Prof. Malcom Gressman directed two and two were directed by outstanding theatre students under his supervision. Two children's theatre plays were staged; Peter, Peter, Pumpkin Eater, and King Midas and The Golden Touch. The long plays were The Girls in 509, Diary of Ann Frank, On the Third Day and Bad Seed. We did our fifteenth annual tour of religious drama over the Easter holiday, giving performances in Ky., Tenn., Georgia, Florida, and Alabama. Our highest drama award went to Kenneth Crouch. Officers for 1961-62 will be Gary Gerould and Carl Thomas.

## THETA SIGMA

Missouri Valley College Marshall, Missouri

The college theatre directed by Prof. Gerald A. Cunningham presented The Caine Mutiny Court Martial, Bell, Book and Candle, and the musical, The Medium. James Smith and Claudia Headen directed the fall festival of one-act plays, and scenes from Romeo and Juliet and If Men Played Cards as Women Do composed the spring festival. Guest director of Caine Mutiny was Ralph Vorhis and Prof. Cunningham appeared as Lt. Greenwald. He Ain't Done Right by Neil by Braun entertained a student assembly.

## PSI

Lindenwood College St. Charles, Missouri

Psi Cast staged four productions during the 1960-61 school year. The season opener was John Patrick's The Curious Savage, directed by Kenneth Cox. Steven Kardaleff directed an arena-style production of The Cocktail Party, by T. S. Eliot, and the 1845 work of Anna Cora Mowatt, Fashion; or Life in New York. Patricia Payne and Keith Hammel staged A Festival of International Theatre, a series of five one-act plays, including The Faraway Princess, by Hermann Sudermann; Sir James M. Barrie's The Twelve-Pound Look, Job's Kinfolks, by L. C. Bailey; Sunday Costs Five Pesos, by Josephina Niggli, and the Quintero Brothers' A Sunny Morning. Psi Cast initiated Juliann Bottorff, Judy Leson, Freda Grace Miller, and Robert Donald Hilliard. Next year's president will be Patricia Payne and Robert Donald Hilliard as treasurer. All activities of Psi Cast were under the supervision of Robert Douglas Hume. Associate Professor of Speech and Director of Theatre.



### DELTA PHI

Slippery Rock State College  
Slippery Rock, Pennsylvania

Dr. Milton E. Carless directed four major productions during the past season: *The Heir-ess*, *Beggar on Horseback*, *Teach Me How to Cry*, and *See How They Run*. One-act student-directed plays were *Mooney's Kid Don't Cry* and *Dark Room*. A series of one-act arena productions, student-directed, were presented, using seminar technique for audience, cast, and technical participation. Seventeen people qualified for Alpha Psi Omega. Cast president was Donald Miller, Marianne Cianfarano was secretary.

### DELTA THETA

Minot State College Minot, North Dakota

Prof. Joseph G. Svec director of Campus Players presented *The Madwoman of Chaillot*, *Antigone*, and *Teach Me How to Cry*. The dean of the college, Lawrence S. Flaum, wrote a one-act play *Korvelt* that was directed by Prof. Svec. Seven other one-act plays were student-directed. The summer theatre production is *Only an Orphan Girl* and selected for 1961 are Priestley's *Dragonmouth*, *Summer and Smoke*, and *Anatol* by Schnitzler. A conference is being planned by Campus Players as the North Central Theatre Arts Workshop for the Spring of 1962. Chapter officers were James Martin and Karen Pederson.

### MU EPSILON

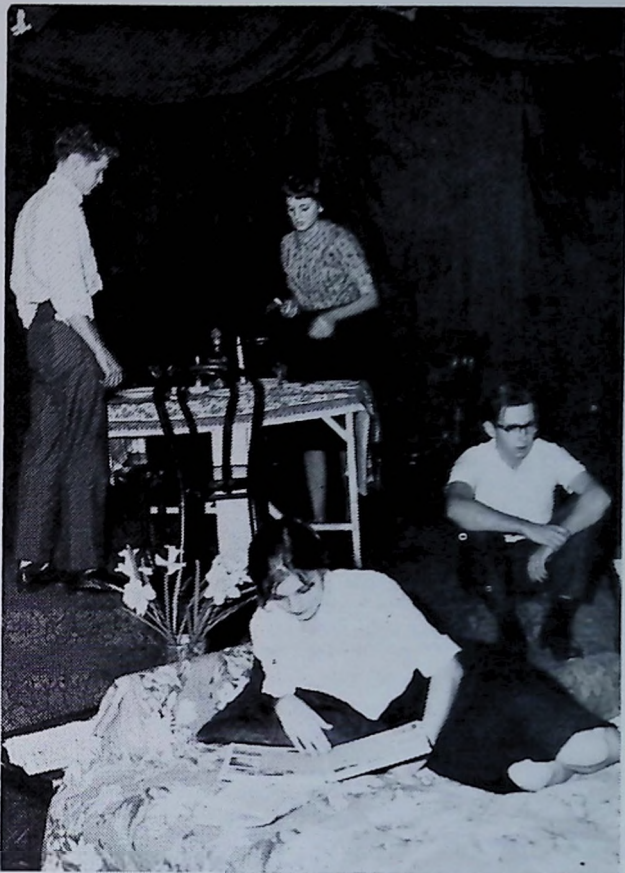
Lycoming College Williamsport, Penna.

The grand opening of the 1960-61 season was the Eva Le Gallienne translation of Henrik Ibsen's *Hedda Gabler*. It was the first time we designed and executed our own costumes, and the production brought much acclaim from the college community as well as the city. We next presented an evening of one-act plays. *Rouge Atomique* by Richard Nash and the *Bald Soprano* by Eugene Ionesco, were presented and following the performance, the actors and directors faced the audience for a shower of questions concerning the plays and their performance. Mr. Myers, the Director, again took the reigns in hand for the final production which was *The Beggar's Opera* by John Gay. It was presented with much originality by using stylized settings and costumes.

### PI IOTA

Southern Oregon College Ashland, Oregon

Pi Iota cast members earned points for membership this year by working on the staging of a concert reading of *Oedipus the King* and by acting and staging assignments in *Many Moons* (double cast), *Our Town*, and *The Ugly Duckling*. William Strong received an award from the Ashland Branch of AAUW, one of the organizations sponsoring the children's theatre productions for his work as stage manager for *Many Moons*. The Annual acting and production awards were presented at Annual Awards Assembly by cast director, George Brown. Acting awards went to David O'Donahue and Rose Mary White. A special award in production went to Gary Kranenberg for his work in lighting.



"The Glass Menagerie", directed by Miss Leona Scott, Ark. State Teacher's College, Conway, Arkansas.



Connie Deorner, Betty Whitney, Debbie Hunt, Jim Whitledge, and Judy Swain in "The Heritage of Wimpole Street" Oakland City College, Indiana.



Helen Claire, noted actress, and her husband, Dr. Milton Smith author of the text, "Play Production", received membership in Beta Eta Cast from Claire Gray, cast president, and faculty advisor, Dr. Maryland Wilson, Huntingdon College.

#### BETA ETA

Huntingdon College

Montgomery, Alabama

The Huntingdon Playmakers, directed by Dr. Maryland Wilson, presented *She Stoops to Conquer*, *The Florist Shop*, and *Mad Woman of Chaillot*. Some Beta Eta members appeared in the Montgomery Theatre Guild's *The Yellow Jacket*, directed by Dr. Milton Smith, retired director of the Brander Matthews Theatre of Columbia University and author of the text, *Play Production*. Miss Helen Claire (Mrs. Smith), Alabama star of Broadway, of network radio and TV, gave a chapel talk on acting. Later the Smiths were honored at a coffee and a luncheon. Honorary memberships in Alpha Psi Omega were conferred on Miss Claire and Dr. Smith, and eight students were initiated in an impressive candlelight ceremony. Marcia Worrell, received the Ethel Lyddon Kuter Dramatics Plaque, which is awarded each year to a senior, outstanding in dramatics. The final meeting of the year was an informal cook-out, and new officers were elected: Deana Baird, Hazel Hall, Mary Nell Hatcher, and Peggy Jacobs.

#### ZETA ALPHA

Abilene Christian College

Abilene, Texas

The Melpomenean Players. Mrs. Rex Kyker director, presented a notable series of productions beginning with the musical *Brigadoon* in October, directed by Dr. Rex Kyker, head of the Dept. of Speech. *I Remember Mama* was directed by Mrs. Kyker who also staged *Winterset* and *Christ in the Concrete City*. *Twelfth Night* was directed by graduate drama student, Don Wilmeth. A highlight of the year was a Theatre Alliance production of *J. B.* on Feb. 14. The beginning and advanced directing classes each staged a program of one-act plays. Cast officers were Don Wilmeth, president; and Nancy Swanson.

#### MU NU

Nicholls State College

Thibodaux, Louisiana

*Blithe Spirit* was staged by Mrs. Lera R. Kelly in the round using a system of double casts. Each cast appeared on alternate nights. We found this to be a good box office attraction and a challenge to student actors. Mrs. Kelly also directed *Lil Abner* by N. Panama-Frank. *Our Town* has been selected for the 1961-62 season. Chapter officers are Don Cicet, president; and Carole Webster, secretary.

#### DELTA NU

Florida Southern College

Lakeland, Florida

The Vagabonds of Florida Southern College welcomed a new director this season, Prof. Melvin Wooten, who directed *All My Sons*, *Heartbreak House*, and *Ladies in Retirement*. Mr. Wooten also directed the short plays, *Riders to the Sea* and *The Breaking of Bread*. Two original one-act plays, written by Romer Justice were presented. In the new season we plan to add a musical to the three major shows. Cast officers were Delia Bird and Jim Kless.

#### BETA EPSILON

Rutgers University

New Brunswick, New Jersey

Queen's Theatre Guild of Douglas College and Rutgers University had a very busy season. Dr. Anetta Wood directed *Death of a Salesman*, Nancy Swartzell directed *Sabrina Fair*, and Mr. Erik Walz directed *She Stoops to Conquer*. Mr. Walz also directed the short play, *Sign of Jonah*. We also sponsored a production of *Romeo and Juliet*, performed by Joseph Popp's New York Shakespeare Festival, widely known for its performances in Central Park. Fifteen people were admitted to Alpha Psi Omega. Rose Mary Puglio was cast president. The new president is Xenia Koulomzin.





Sandra Martin, Bobbi Jo Thome, and Ben Giorgio in "Arsenic and Old Lace".  
Mermaid Players of Dickinson College, David F. Brubaker, director.



George Worrell and Travis Franklin in "The Last of My Solid Gold Watches" by Tennessee Williams, directed by Clifford Haislip, Little Rock Univ.

#### LAMBDA PHI

Dickinson College

Carlisle, Pennsylvania

As evidence of the great success of the past season, each play was sold out for every night. The major productions were *Arsenic and Old Lace*, *Crime and Punishment* (a dramatization of the Russian novel by Marcel DuBois) and *The Lady's not for Burning*. The director of the Mermaid Players is Prof. David F. Brubaker. Ten players became members of Alpha Psi Omega. Margot Rice and Andrea Adams were Lambda Phi cast officers.

#### TAU

Texas Technological College

Lubbock, Texas

The department of speech of Texas Tech sponsored a European Theatre Tour this summer to all the theatrical and festival centers of England, Scotland, Germany, Holland, Austria, and France. The major productions of the college theatre were *The World of Sholom Aleichem*, and *Tea and Sympathy* by Robert Anderson, directed by Shirley Cadle. Prof. Ronald Shulz directed *Ondine* by Giraudoux and *The Merry Wives of Windsor* with Shirley Cadle assisting as technical director, and the dances under the direction of Diane Burke.

#### LAMBDA UPSILON

Mansfield State College

Mansfield, Pennsylvania

The Players presented *Teahouse of the August Moon* and *The Glass Menagerie* directed by Prof. Joseph E. Conaway. For the 1st Annual Arts Festival—the Players presented an evening of off-beat drama. The Players Marionette Theatre, featuring marionettes created by Ruth Baum, performed Chekhov's *The Marriage Proposal* on WNEB TV in Binghamton, N. Y. Russell Eiffert, Elaine Plieskatt and Patrick Clancy are the members of the marionette troupe.

#### ETA MU

Little Rock University

Little Rock, Arkansas

The 1960-61 theatre season at Little Rock University offered the members of Theatre Guild and Alpha Psi Omega some challenging acting assignments. The four major productions were *Of Mice and Men*, *Come Back Little Sheba*, *Bell, Book and Candle*, and *The Philadelphia Story*. One-act plays produced included *The Emperor Jones*, *Tragedian in Spite of Himself*, *Lady of Larkspur*, *Lotion*, *Before Breakfast*, and *The Last of My Solid Gold Watches*. Other highlights included a concert reading of Civil War poetry and prose called *A Salute to the Confederacy* and a one-act play festival as a part of the State Speech Festival Plans for next year: *The Corn is Green*, *Ghosts*, *Song of Bernadette* and *The Little Foxes*. Nine new members were added this season. Officers were John Atkinson, Don Riffin, and Linda Kresse. Cliff Haislip is sponsor and director.

#### MU KAPPA

SACRAMENTO STATE COLLEGE

Sacramento, California

Dr. Carl Thomas and Dr. Charles Hume directed our feature productions for a very impressive season: *Look Homeward Angel* played to capacity audiences, Shaw's *You Never Can Tell* was done arena style and was taken on an extensive California tour. Our classic production was *Phaedra* by Jean Paul Racine. The designs, costumes, and acting were a challenge to actors and technicians. For our last production of the year we gave the West Coast premiere of Ionesco's *The Killer*. The style and method of acting and staging was startling and different. Only some props, drops, and stairs were employed in the staging. The opera, *Carousel*, was another feature of the season. Cast officers were Patricia Glycer, Gary Queale, Evon Ray, and Jean Fox.



Gail Alexander and J. T. Noblin in the Millsaps Players' production of "SMALL WAR ON MURRAY HILL" by Robert Sherwood, directed by Lance Goss, Millsaps College.





Mississippi College Tribal Players production of Emlyn Williams' "The Corn is Green," directed by Bob Leonard. James Gordon as Morgan Evans, Jo Russell as Miss Moffat.

## PI CHI

Mississippi College

Clinton, Mississippi

A brief review of the productions of the Tribal Players shows a most interesting series of productions: *The Matchmaker* by Thornton Wilder and *The Corn is Green* were directed by Prof. Bob F. Leonard. Student directed plays were *Gammer Gurton's Needle*, *Seven Women*, and *The Bear*. Next season a new translation of *Tartuffe* will be staged, also an arena production of *The Glass Menagerie*, and a concert reading of *Under Milkwood*. A series of awards have been established and those receiving them this year were Jo Russell, Sharon Harkew, Edward Spruill, and John Suddith. Cast officers were Jo Ann Stokes and Jo Russell.

## BETA NU

ARIZONA STATE COLLEGE

Flagstaff, Arizona

Beta Nu Cast and Arizona Playmakers instituted a three night run this year for each of their three major productions. *Sabrina Fair*, *Look Homeward, Angel*, and *Richard III*, all directed by Professor Ralph Holly, each drew approximately 1200 patrons. Four performances of *Richard* were given at the annual Shakespeare Festival in Phoenix in April. A cast and production staff of forty-two trouped to the capitol city for this production. Also presented at the Festival were *Hamlet* by The Phoenix Little Theatre and *The Merchant of Venice* by Arizona State University at Tempe. The second annual original one-act play contest was won by Sharon Allen with her comedy of theatrical life *Summer Fare*. For the third year Robert Riner received the best actor award, this time for his magnificent portrayal of the hunchback *Richard*. Other awards were won by Janet Horton, Jack Graves, Linda Lambert, Steve Sacco, Robert Powers, Gary Redman, and Cooper Coota.

## DELTA PSI

Miss. State College for Women

Columbus, Miss.

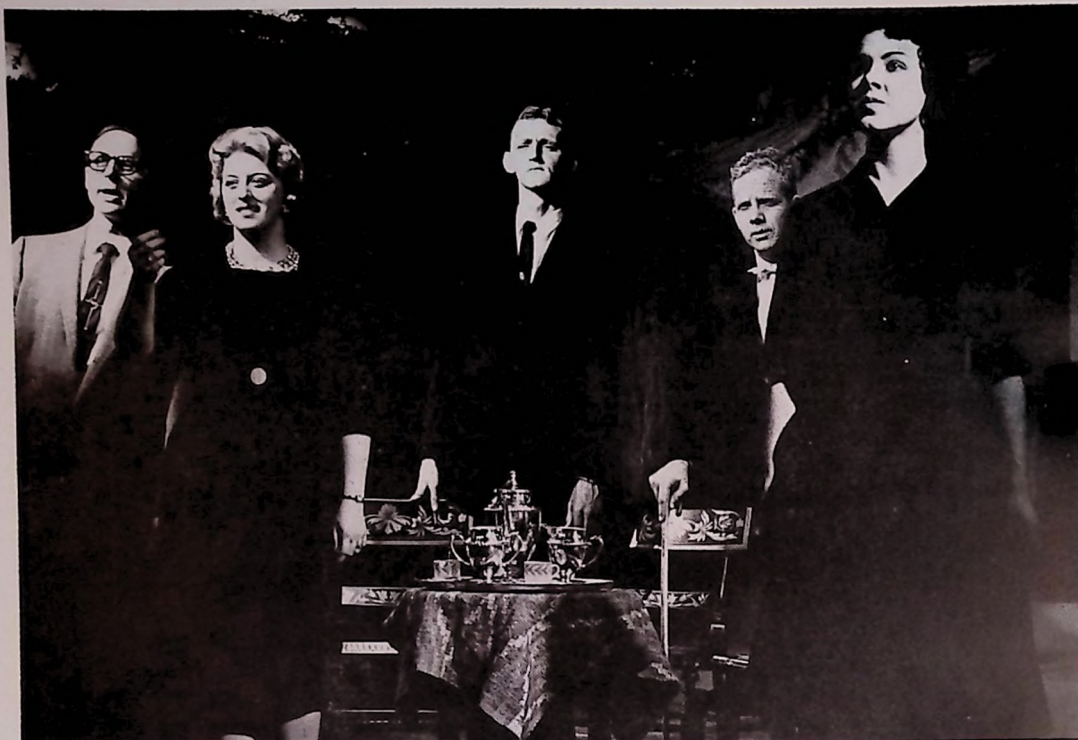
The highlight of the 1960-61 year at MSCW was the spring production, *The Trojan Women*, by Euripides, directed by Kay Caywood. For the first time, boys were used in male roles. Fall production was Oscar Wilde's *The Importance of Being Earnest*. In the one-act evening *Sarileia* Deaton directed *The Red Peppers* by Noel Coward. Sandra Brown directed *The Monkey's Paw* by W. W. Jacobs, and Nell Tucker directed *The Terrible Meek* by Charles Rann Kennedy. Nine members were received into our cast. Cast president was Kay Watt; secretary, Wynette Armstrong. The season ended with a banquet immediately following initiation, and "Franny" awards (statuettes) were given to the students who were selected by secret ballot of the entire membership. Miss Frances M. Bailey is faculty advisor.

## ALPHA UPSILON

Clarion State College

Clarion, Pennsylvania

Prof. Bob H. Copeland directed the major productions: *Dream Girl* by Elmer Rice, *Charley's Aunt*, *Macbeth*, and *Teahouse of the August Moon* in which Yoshika Skimajo, former Japanese motion picture star and a transfer student in Clarion State, played a leading role and provided Japanese costumes and performed traditional dances of Japan. *Macbeth* ran for five nights and then was taken on tour to five area highschools. Three plays selected for the 1961-62 season are *John Brown's Body*, *Hatful of Rain*, and *Amahl and the Night Visitors*. Cast officers are Jack C. King and Cathy Richardson.



Scene from "The Cherry Orchard", McNeese State College, directed by Margery Wilson; technical director, Betty Hinton.

#### THETA GAMMA

LaGrange College

LaGrange, Georgia

The LaGrange College Curtain Raisers opened the season with *The Curious Savage* directed by Miss Irene Arnett with Miss Sylvia Strickland as technical director. Our second production was *Antigone*. Two speech majors directed *Affairs of State* with Gail Woodruff and Larry Thomas in the leading roles, and *Pygmalion* starring Mary Ann Wages and Bill Griffin. Our new members are Larry Thomas and Beti Wheeler.

#### NU LAMBDA

Notre Dame College of Maryland

Baltimore, Maryland

Ye Merrie Masquers, directed by Miss Aileen Mize, staged as their major production, *The Late Christopher Bean*. A program of one-act plays included *Confession by Proxy*, directed by Joanne Rafferty, *Phoebe Louise* directed by Karen McGrath, *She Writes a Roof* directed by Shelia Kirchenbauer, and *Spreading the News* directed by Sister Mary Josepha. Elizabeth Silcott directed *Suppressed Desires* for a College Open House. A theatre party to see *Phaedra* at Catholic University was sponsored in January and two theatre evenings were held with members of Loyola College and Johns Hopkins University. The following received awards at the annual banquet: Carol Goode, Elizabeth Silcott, Karen McGrath, Lynda Welsheit, and Lynn Myers.

#### MU RHO

Rhode Island College

Providence 8, Rhode Island

The fall production of the Dramatic League of Rhode Island College was *Bus Stop*, and the spring play was *Hedda Gabler*, directed by Prof. Joseph D. Graham. Both shows played to 1200 each. We did a musical workshop revue that played to 700 people, and an assembly that

consisted of scenes from *Medea* and *The Man of Mode* or *Sir Fopling Flutter*, a restoration farce. The second annual High School Dramatic Festival was on April 8, and a theatre party to Boston was sponsored to see the pre-Broadway showing of *The Far Country*, starring Kim Stanley. Chapter officers are Lori Cimini, Sue Guillotte and Judith Duffney.

#### ALPHA PSI OMEGA

Bethel College

North Newton, Ks.

Professor Norman Lofland and the Bethel drama department had a very successful year with three major dramatic productions. George Bernard Shaw's famous light comedy *Pygmalion*, was chosen for the fall presentation. A heavier production, *Julius Caesar* by William Shakespeare, was chosen for winter quarter. The year reached a dramatic climax as the department closed out with the story of Job through Archibald MacLeish's *J. B.* Drama awards were presented to Arlo Kasper for best actor and to Ronald Hatchett for overall drama participation.

#### NU XI

St. Mary's Dominican College

New Orleans, La.

The Dominican Players won applause by an ambitious program, staging *Anastasia*, Shakespeare's *Twelfth Night*, and holding three drama festivals. Solo dramas in costume were presented, featuring scenes from classical and modern plays. Several invitations were accepted to entertain such clubs as the Confederate Daughters and the Association of University Women, and the Players provided judges for various high school talent shows and play tournaments. Sister Mary Joanna, Ph.D. is director of the Dominican College Players and adviser of Alpha Psi Omega. In the way of social events, the Players sponsored a Christmas dance and an award night aboard the *RIVER QUEEN*.





Scene from "The Matchmaker" by Thornton Wilder, directed by Margery Wilson, Betty Hinton, technical director, Bayou Players, McNeese State College, Lake Charles, Louisiana.

#### PI GAMMA

##### McNEESE STATE COLLEGE Lake Charles, Louisiana

The Bayou Players opened the 1960-61 season with Wilder's *The Matchmaker*, directed by Margery Wilson using a revolving stage and the newly installed light and sound equipment. A Fine Arts production of *The Mikado* followed. Bettie Heydon designed the sets for *The Cherry Orchard*, a three quarter round presentation, Betty Hinton, technician, and Margery Wilson, director. Nine one-act plays were directed by Raymond Crowfoot, Bill Dickerson, Paul Ellender, Amelia Franklin, Don Land, Dick Mercer, Annette Pousson, Sandra Sudduth, Carolyn Tomlinson. At the final party the group had a surprise entertainment in appreciation of the number of Shakespearean plays we have presented and to keep us on our toes. It was a fifteen minute *Macbeth* by children ranging from two to thirteen with lines in the scenes that were played, not adapted but Shakespeare's.

#### ALPHA

##### Fairmont State College

##### Fairmont, W. Va.

The Masquers had a full season with *Skin of our Teeth* directed by Jo Anne Lough. *Teach Me How to Cry* directed by Bradley Smoker. *Julius Caesar* with a Cuban background, directed by Prof. L. A. Wallman. *Guys and Dolls* was the musical production directed by Prof. Smoker. A program of summer theatre was inaugurated under the title of TOWN AND GOWN PLAYERS, and four shows were successfully staged: *Picnic* with Prof. Michael McHale of the Pitt Players, University of Pittsburgh as guest director. *The Mouse Trap* directed by JoAnne Lough and *Our American Cousin* directed by William Hanks and *Little Mary Sunshine* directed by JoAnne Lough with Mrs. William Hanks director of choreography. Plans are under way for an outdoor theatre for next summer's productions.

#### THETA ALPHA

##### Glenville State College

##### Glenville, West Virginia

The first major production of the season was *Golden Boy*, directed by Prof. William Coleman, who also directed an arena style *Hedda Gabler*, Shaw's *Major Barbara*, and *Summer and Smoke*. A new comedy, *A Ballad for John Hardy*, written by the director was presented with a bill of one-act plays, and another original play, *Courtship and Early Death* was presented live on Channel 5, last October.

#### ETA OMICRON

##### Carthage College

##### Carthage, Illinois

The major productions of the Carthage College Theatre were *Thieves Carnival*, *Hamlet* and *The Boy Friend*, directed by George Bedard and Shandy Holland. *Beyond The Horizon* was directed by Shandy Holland. Fred Bess was cast president. The Best Actress Award was won by Miss Jan Mason, and Best Actor by Gary Ginelman.



Noralle Barnett and Tom McKee in "Life with Father", Northeastern University, Boston, Prof. Eugene Blackman, director; Charles M. Devlin, technical director.



Betty Kyers as Mary, William Dallavo as David, and The Witnesses and The Judges, in the Hillsdale College arena production of LeRoy's "Between Two Thieves." Professor George Hale, director.





Scene from "The Trojan Women" by Euripides, directed by Sister Mary Helene, Incarnate Word College.



Noralle Barnett and Joyce Deneault in "Anastasia", staged by The Silver Masque of Northeastern Univ. and directed by Eugene J. Blackman.

#### IOTA XI

Incarnate Word College

San Antonio, Texas

The productions of the past season were most successful and very well received. Sister Mary Helene directed *The Trojan Women* and *The Knave of Hearts*. Next year we play a series of marionette shows with plays written by Peggy Sadler, and alumni members, with puppets by Senor Espinosa of Mexico. Miss June Titus is Iota XI president.

#### BETA PSI

Kent State University

Kent, Ohio

Under the direction of Professor G. Harry Wright, a brief dedication ceremony followed by the production of Rostand's *Cyrano de Bergerac*, opened the new E. Turner Stump Theatre on November 2, 1960. Among those present for the ceremonies were Dr. Yetta Mitchell, Grand Director, and Professor Donald P. Garner, Grand Stage Manager. Planned for 1961-62 are productions of *The Time of Your Life*, *The Adding Machine*, *The Member of the Wedding*, an original opera based on *The Legend of Sleepy Hollow*, *The Little Foxes*, and *Under Milkwood*. *Electra* was directed by Dr. Bedford Thurman; Shaw's *Pygmalion* was directed by Prof. William Zuchero. This play was given as part of the 16th Annual Drama Clinic for High Schools and was seen by 1200 high school drama enthusiasts, who also heard guest speaker, Dr. Roy H. Bowen of Ohio State University Theatre. Prof. Earl E. Curtis directed *The Tempest* and Inge's *The Dark at the Top of the Stairs*. In April the Kent Theatre audience saw Dr. Thurman's *Six Characters in Search of an Author* by Pirandello. Officers for the past year include Marcia Ross, Ralph Miller, John Keck, and Joanne Korosy.

#### NU UPSILON

Nebraska State College

Kearney, Nebraska

The College Theatre completed another successful season under the direction of Wesley J. Jensby and Phillip Jackman. The feature productions last season were *South Pacific*, *Death of a Salesman*, *Visit to a Small Planet*, and *The Rainmaker*. An Alpha Psi Omega show, produced and directed entirely by students, was the old melodrama, *Pure as the Driven Snow*. The audience was urged to boo the villain and cheer the hero. This will be an annual event, known as the Alpha Psi Omega Winter Show. A student directed program of one-act plays was presented and this too will be an annual affair. The productions scheduled for the coming season of 1961-62 will include *Othello*, *Playboy of the Western World*, *The Crucible*, and *Take Me Along*. Cast officers are Karen Lueck and Judy Waldmann. Fifteen people qualified for admission to Nu Upsilon Cast.

#### NU CHI

Northeastern University

Boston 15, Massachusetts

Four major productions were staged during the past season directed by Eugene J. Blackman and technical director, Charles M. Devlin: *Life with Father*, *Anastasia*, *South Pacific*, and *Good News*. Awards for the season were presented to Tom McKee, Noralle Barnett, John Brogna, Gail Silverstein, Dick Blue, Fred LaPlante, and Angelo Lopolito. The Silver Masque played host to the New England Theatre Conference and invited guests included Moss Hart, Jessica Tandy, Peggy Woods, and Elliot Norton. Jessica Tandy spoke to the Silver Masque about her theatre career. Prof. Blackman was elected to the presidency of The New England Theatre Conference. New cast president is Claire Baker.



"FASHION, or LIFE IN NEW YORK" by Anna Cora Mowatt, Linden vood Collage, St. Charles, Missouri, directed by Stephan Thomas Kardaleff





John Rosier and George Steggerda in Ferris Playhouse production of "FAUST". Dr. Lyle V. Mayer, director.



"ANTIGONE," Southwest Mo. State College, directed by Marcia Lee.

#### KAPPA ETA

##### Ferris Institute

##### Big Rapids, Michigan

The season of 1960-61 certainly was one of the finest in the history of the Ferris Playhouse. Under the talented direction of Dr. Lyle V. Mayer the opening production was *Volpone*. Dr. Herbert Carlson directed *The Physician in Spite of Himself* and Dr. Mayer directed *Salome* for the Ferris Festival of Arts during the winter. Dr. Mayer directed Goethe's *Faust*. Dr. Mayer adapted the play and staged it in arena style with extremely weird lighting, electronic sound, and stage and scenery effects arranged by our technical directors, Michael Sniderman and Harry Howard. Among the productions planned for next year are *Dark of the Moon*, *The Merchant of Venice*, and *Visit to a Small Planet*. At least one of these productions will be used in the dedication of our new theatre now under construction. Two members received awards at the annual banquet and the national honors were conferred upon twenty-three actors and actresses. Cast officers were Frederick Germaine, president, and Dorothy Kleinschmidt, secretary.

**MU XI, Boston University.** The productions of the Boston University Theatre were *Oedipus Rex*, *Oedipus at Colonus*, *Doctor Faustus*, and Ibsen's *Brand*. The series illustrated the changing role of the hero in drama.

#### RHO ALPHA

##### Pfeiffer College

##### Misenheimer, North Carolina

Prof. Robert Grubbs, director of the Pfeiffer Playmakers, staged a most successful season's productions, winning the praise and approval of faculty and students. The feature plays were *The Glass Menagerie*, *Bell, Book and Candle*, *Amahl and the Night Visitors*, *Accent on Youth*, and Arthur Miller's *The Crucible*. *The Crucible* was staged as a part of the first Pfeiffer College Fine Arts Festival. Also as part of this festival the Playmakers presented an hour of scenes from Shakespeare and modern dramatists. The Playmakers staged *One Man's Moon*, a short play by Dennis Savage. President of the Playmakers was Miss Linda Beadles and president of Rho Alpha cast was Blair Beasley.

#### LAMBDA DELTA

##### Morris Harvey College

##### Charleston 4, West Virginia

The Blackfriars staged three major productions and two one-act plays. The first play was *Lullaby* by Don Appeal. Miss Virginia Pomroy directed the play as well as *A Dash of Bitters*, and *Bell, Book, and Candle*. The short plays were *The Lottery* and *Hell and High Water*. William Hammack, a student, wrote the last one-act, and next year we plan to stage a full program of plays written by students and faculty. James Harper is president of the Lambda Delta cast. The plays selected for the 1961-62 season are *Kind Lady*, *Goodbye, My Fancy*, and *Dark Lady of the Sonnets*.



Susan McColl (Katherine), Stanley Pratt (Petrucio), and Thomas Hinks (Baptista) in "THE TAMING OF THE SHREW", arena production, Hillsdale College, Prof. George Hale, director.

#### PI OMICRON

Lamar State College of Tech.

Beaumont, Tex.

The Cardinal Theatre began its season with *Blithe Spirit*, directed by Dr. Ted Skinner, Dean of the School of Fine Arts. *Romeo and Juliet* was given for eleven performances, and the Tech-Beaumont Opera Workshop production was *Rigoletto*, directed by George Bogush with W. Patrick Harrigan, technical director. The annual double bill consisted of the musical, *Amelia Goes to the Ball*, by Menotti and the Geyer-Wodehouse play, *Candle-light*. Three evenings of one-act plays included a shortened version of *Antigone*, Ionesco's *Improvisation*, *The Shepherd's Chameleon*, *My Hornbook* and *Top* and *The Precious Damsels*. A reader's theatre production of *Tiger at the Gates* was directed by G. E. Bogush and Mrs. Jean Blanton. For the first season of summer theatre Mr. Harrigan directed *Say Darling!* and Prof Bogush directed *Bell, Book and Candle*.

#### KAPPA XI

State Teachers College

Frostburg, Md.

We were again invited to represent the State Colleges in presenting a television show on the "College Days" series in Hagerstown, Maryland. *Noah*, a biblical fantasy, by Andre Obey, was the major production of the first semester. To stimulate interest in our reading performance of *The Importance of Being Earnest*, Kappa XI members sponsored an Oscar Wilde Hour with a speaker from the English department followed by discussion and refreshments. Proceeds from this performance went to the fraternity's annual scholarship fund of which John Clark was the 1961 recipient. Alpha Psi members directed *Theatre Showcase* using scenes from modern plays. Miss Dorothy Stone White supervised and directed all production. The social activities were highlighted by a coffee for alumni members, a Homecoming, a banquet, and an installation dessert party.

#### MU ALPHA

Hillsdale College

Hillsdale, Michigan

Shakespeare's *The Taming Of The Shrew* and Warner LeRoy's *Between Two Thieves* were directed by Professor George H. Hale, and played to enthusiastic audiences. Outstanding actors were Pamela Britton, William Dallavo, Jeffrey Fair, Thomas Hinks, Susan McColl, Stanley Pratt, and Arthur Widman; outstanding production staff members were Scott Hall, Thomas Hinks, Susan McColl, Barbara McGeorge, and Roger Purdy. Five members were admitted to Mu Alpha Cast.

#### THET ETA

HOOD COLLEGE

Frederick, Maryland

Dr. Barbara Canning directed *The Glass Menagerie* as the major fall productions of Marionettes, and the spring production consisted of three one-act plays: *Cathleen ni Houlihan*, *Overtones* and *The Apollo of Bellac*. At the Marionettes banquet in May awards were presented to Jayne Polhemus, Betty Dolbey, Joy Engle, Margaret Jones, Susan Aufer Heyde, Marcia Powell, and Joan Angotti. Nine members were admitted to Alpha Psi Omega. Pamela Roberts is cast secretary.

#### ALPHA ZETA

Central College

Pella, Iowa

The long plays presented this season were *Knickerbocker Holiday*, *The New Pilgrim*, *The Taming of the Shrew*, and *The Golden Fleece*. In the future we intend to present a Shakespeare play each season instead of every other year. The religious play, *The Sons of Adam*, was toured in Iowa and *The New Pilgrim* was taken on tour in Iowa, Illinois, and Pennsylvania. Prof. Maurice Birdsall will travel in Europe this summer. Eight members were admitted to Alpha Psi Omega. Chapter officers were Bob Wegter and Carolyn Fuhr.



## MU PHI

Southern State College Magnolia, Arkansas

During the first semester of the season the Stagecrafters presented *High Tor* and *Twilight Walk*, under the direction of Margaret Harton. For the spring production they gave *Family Portrait*, under the direction of members of the directing class. Each student was responsible for one scene of the play. At the annual banquet in May, awards were presented to Baker Joe Jameson, Phyllis Muncrief, Grady Higgs, Ann Cearley, Betty Webb, and Harry Thomason. Medallions were given to Terry Wheelis, Kathy Wheelis, and Ann Sizemore.

**IOTA GAMMA**, Cedar Crest College, Allentown, Pennsylvania. The major productions of the Buskin Society were *Women of Thraceis* and *Blithe Spirit*. The annual Greek Play *Women of Thraceis* was presented in the outdoor Greek theatre. Both productions were assisted by the male members of neighboring colleges and also by Cedar Crest faculty members. A student directed one-act play *Overtones* was presented, directed by Miss Phoebe Mayer. Cast officers were Phoebe Mayer and Scarle Winters.

**DELTA GAMMA**, Alderson-Broaddus College, Philippi, W. Va. The *Glass Menagerie* and *No Time for Sergeants* were directed by Mary Belle Smith, and two short plays *Finders Keepers*, and *The Dutches Says Her Prayers*. We also participated in the Civil War Centennial pageant. A *House Divided*. Bonne Sue Corey is Delta Gamma Cast secretary.

**ALPHA OMICRON**, Bloomsburg State College, Bloomsburg, Pa. The Bloomsburg Players presented *The Curious Savage* directed by Miss H. Kelly, *The Skin of our Teeth* directed by G. Godwin, and *Amahl and the Night Visitors*, directed by William Cope. Alpha Psi Omega sponsored the annual variety show and presented the mental health play, *The Room Upstairs*, for civic groups in Bloomsburg. President was Bruce Van Housen; Treasurer, Jean Valentiner.

**ZETA ZETA**, Bethany College, Lindsborg, Kansas. Warren Kilewer directed *The Trojan Women*. The short plays were *The Brome Abraham and Isaac*, *The Stronger*, *Eurydice Abandoned*, *The Last Word*, *The summoning of Everyman*, and *The Shoemaker's Wife*. Cast officers were Sandra Walker and Eldon Eliason.

**BETA XI**, Concord College, Athens, W. Va. The Concord College Players presented *Inherit the Wind* and *Bus Stop*, directed by Prof. Whitehead who also staged the short play, *The Flattering Word*. Cast officers were Jim Meredith, president; and Myrna Moles, Secretary.



Arvill Callis, Oakland City College, winner of A.P.O. Best Acting Award for his interpretation of the Prince of Denmark.



John Wood, Alton Davis, Ken Bentley, and Brenda Haas in "Hamlet", Oakland City College, Margaret Earl McConnell, director.



Scene from "Macbeth", directed by Prof. James W. Swain, Sam Houston State College, (March 1961).



Scene from the musical, "SOUTH PACIFIC", (Apr. 1961), directed Prof. Charles A. Schmidt, Sam Houston State College, Huntsville,

#### IOTA IOTA

Sam Houston State Teachers College      Huntsville, Texas

There was a steady increase in interest in the major productions of the Sam Houston Players. The attendance ranged from 950 for the first show to 3,335, who attended the fourth production. Prof. Lynn Murray directed *The Mousetrap*. Patrick Horrigan directed *Our Town*. James Swain directed *Macbeth*, and Prof. Charles A. Smith directed *South Pacific*. The plays selected for the 1961-62 season are *Blithe Spirit*, *The Crucible*, *Come Back Little Sheba*, and *Oklahoma or Guys and Dolls*. Cast officers are Janet Baker and Ruby Hall.

#### LAMBDA OMICRON

Elon College

Elon, North Carolina

The Elon Players, Prof. E. R. Day, director, had both an active and successful season, staging *The Doctor in*

*Spite of Himself* and *The Rainmaker*. The Christmas program was two student-directed one-act plays. The Sixth Annual Awards Night was held late in the year. Samuel W. White, a senior, was given a gavel in appreciation of the work he had done in the past four years at Elon. The service awards were presented to Carol Trageser, Tony Markosky, Rosalie Radcliffe, John Williams, and Sandra Russell. William Troutman was the recipient of the Jerry Dalton Strader Award, presented each year to the most outstanding student in dramatic arts. Cast officers are Richard L. Milteer, president; Rosalie Radcliffe, secretary.

**TARKIO COLLEGE THEATRE**, Tarkio College, Tarkio, Missouri. Prof. Henry Blanke, Jr., is the director of the Tarkio College Theatre. The productions of last season were *Inherit the Wind*, *Gigi*, and *Death of a Salesman*. The short plays for this season were *The Happy Journey*, *Curse You Jack Dalton*, *Twelve Pound Look*, and *Suppressed Desires*. Chapter officers were Dodie Schroedter and Jane Craig.





Joe Benavides, Bob White, Troy Wicker, Kaye Franklin (above), Cathi Wise, Barbara Breed, Don Howell and Jerry Munns in "DIARY OF ANNE FRANK", directed by Keith Kennedy, Texas College of Arts and Industries.

#### KAPPA PHI

Texas College of A. and I.

Kingsville, Texas

The Footlights Club opened its 1960-61 season on October 24 with four performances of Shakespeare's *Twelfth Night*, directed by Dr. Albert E. Johnson. Some 2,300 high school students from the South Texas area attended. Next was a most successful run of *The Diary of Anne Frank*, directed and designed by Keith Kennedy. The annual children's play was *The Clown Who Ran Away*, directed by Jean Taylor. Over 2,000 local school children from the first six grades saw the play. Dr. Johnson directed *Morning's at Seven*, presented March 27-29 in the little theatre. On May 2-3 eight one act plays were produced by the acting and directing classes: *Joint Owners in Spain*, *A Marriage Has Been Arranged*, *The Still Alarm*, *Spark-in*, *The Workhouse Ward*, *The Boor*, *Minnie Field*, and *The Sisters McIntosh*. At the Sixth Annual Awards Banquet on April 28, Alberts were awarded to Kaye Franklin and Yolanda Castaneda as Best Actresses, Troy Wicker and Robert White as Best Actor, and Jerry Munns as Best Crew Member. On May 10 seven members were initiated into Alpha Psi Omega: Kaye Franklin, Cathi Wise, Troy Wicker, Duane Klenke, Joe Benavides, Evelyn Officer, and Suzan McClain.

**DELTA UPSILON**, Texas Christian University, Fort Worth, Texas. The Little Theatre announces as its 1961-62 playbill: *Joan of Arc* by Max Melli, the American premiere to be performed at the annual convention of the Southwest Theatre Conference, Dr. Walter Volbach, director; *The Innocents* in December with Mr. Hammack as designer and director; *Dear Brutus* in March, director, Mr. Hammack; and *The Trojan Women* in April Dr. Volbach, director and Mr. Greenleaf, technical director.

#### KAPPA TAU

Idaho State College

Pocatello, Idaho

The Idaho State College Theatre directors are Dr. Gaylan Collier and Allan Bloomquist, and the productions of 1960-61 were *The Pajama Game*, *Murder in the Cathedral* a readers' theatre version of *A Sleep of Prisoners*, *Sabrina Fair*, *Oedipus Rex*, and *The Tender Trap*. The proceeds of the annual children's plays go to our drama scholarships. This play was *The Elves and the Shoemaker*. At our first annual Awards Dinner, Marion Rossi and Kathy McCune received the awards for outstanding actor and actress, and the supporting trophies went to Dennis Goodenough and Linda Larson.

**KAPPA**, Ottawa University, Ottawa, Kans. The Ottawa University Players under the direction of Katharine Pappas staged *Outward Bound*, *All My Sons* and six student-directed one-act plays and scenes from the classic drama.

**IOTA SIGMA**, Towson State College, Baltimore 4, Md. The Glen Players presented *First Lady and Summer and Smoke* and scenes from three modern plays and *Him* by E. E. Cummins. Ronald Budny is cast president and Sharie Lacey, secretary. Prof. W. C. Kramer is the faculty director.

**GAMMA KAPPA**, Edinboro State College, Edinboro, Pennsylvania. The Edinboro Collegiate Players staged *Door of New York* by Dion Boucicault, and *Much Ado About Nothing*, both directed by Lawrence Vincent. For the current season, *The Crucible* and *The Beaux Strata-gem*. Twelve members received honor society membership in Alpha Psi Omega. DeVerne Bookwalter was cast president; Doris Stewart, secretary.



Scene from "Skin of Our Teeth", staged and directed by Prof. David Ashburn, Greensboro College.



Nell McPhee, Frederick Germaine, Alfred Greenwood and Robert Luckey in Goethe's "FAUST", directed by Dr. Lyle V. Mayer, Ferris Institute.

#### KAPPA PI

Greensboro College

Greensboro, N. C.

Under a new director, Mr. David Ashburn, the Greensboro College Players have presented two highly successful productions. The fall production was *Skin Of Our Teeth* by Thornton Wilder, and the spring production was *Between Two Thieves* by Warner LeRoy, adapted from Diego Fableri's "Processeo A Gesu." This was the first college production of *Between Two Thieves*, and it was produced in the chapel of the college. Alpha Psi Omega was organized on our campus this year, and has initiated sixteen members. The charter members are: David Davis, Ruth Baker Hunt, Lynn Almond, Helen Baum, Carolyn Ratcliffe, Ann Lane Thompson, Gail Young, Betty Lou Hardin, and Jane Beane.

**ALPHA PSI**, Wisconsin State College, La Crosse, Wis. The first play *Green Grows the Lilacs* was directed by Dr. Marie Toland. The Chalk Garden presented Feb. 1961, was directed by Robert L. Frederick. Dr. Toland directed *Secret Service* by William Gillette. Eighteen members were admitted to Alpha Psi Cast. President was Rodney Opprecht, Linda Hoeft, secretary.

**KAPPA NU**, West Virginia Institute of Technology, Montgomery, W. Va. Prof. Byron Schaffer directed *The Rainmaker*, which drew a record audience through a "Theatre Party Plan." *He Who Gets Slapped* was presented in Dec. and Barbara and Byron Schaffer gave a concert reading in November.

**PI**, West Virginia University, Morgantown, W. Va. The major shows of the 1960-61 season were *Charley's Aunt*, *Brigadoon*, and *Tiger at the Gates*. A double bill included *The Story of Androcles* and *The Shoemaker's Wife*. Studio productions were *An Evening of Mime*, *Medea*, and a concert reading of *Caesar and Cleopatra*.

**BETA GAMMA**, Bethany College, Bethany, W. Va. *The Glass Menagerie*, *Bus Stop* and a musical were presented under the direction of Prof. John D. Babington.

#### RHO ETA

Lebanon Valley College

Annville, Pennsylvania

The major production of the Wig and Buckle Club was the old melodrama by Morland Cary, *Love Rides the Rails*. An evening of one-act plays included *The Telephone* by Gian Carlo, *Suppressed Desires* and *Aria da Capo*. *Love Rides the Rails* was done in the style of a musical; songs were inserted between the scenes and each act had an overture. The show involved almost fifty people and was co-directed by Prof. James L. Kline and George W. Smith. When completed the show contained two dance routines and twenty solos, duets, trios and quartettes. We conducted our annual theatrical field trip to New York, and between the acts of one production, the group met outside the theatre to present the seniors their Alpha Psi Omega Keys. Cast officers were George Smith and Mary Louise Lamke.

**DELTA ZETA**, University of Dubuque, Iowa. Dr. Arnold Savage was the author and director of the long play, *Fantasio*. The drama society sponsored and exchange of plays with Hamline College, St. Paul, that brought to our campus a production of *Volpone* by Ben Johnson. Fourteen members were admitted to Alpha Psi Omega. Chapter officers were Margaret Fox, Ruth Flage, and Charles Wagner.

**KAPPA SIGMA**, Northwest Missouri State College, Maryville, Missouri. The major productions of the past season were *The Man Who Came to Dinner*, *The Importance of Being Earnest*. Dr. Ralph E. Fulson also directed *The Mikado* (musical) and *The Play's the Thing* by Molnar. An evening of one-act plays was directed by speech majors. *Christ in the Concrete City* and *Aria da Capo* were an Alpha Psi Omega project. Next year's plans include *Tall Story* and *The Little Foxes*. We also plan to sponsor a production of the Cleveland Playhouse. Cast officers are Marilyn Gillis, Mary Prichard, and Roland King.

**LAMBDA KAPPA**, Wagner College, Staten Island, New York. The last production of the 1961 season was *The Boy Friend* directed by Dr. John F. Hruby, Prof. Louis Trahan, technical director.





W. Scott Andrus and Elizabeth Arey in a scene from "Hotel Universe", directed by Prof. Morris Koffman, Rensselaer Polytechnic Institute, Troy, N. Y.



Scene from "The Seven Year Itch", Washburn University, Prof. Hugh G. McCausland, director.

### MU ETA

East Texas State College

Commerce, Texas

The College Theatre at East Texas State College staged two major productions each semester. Dr. Curtis Pope directed an original musical for Homecoming and Look Homeward Angel by Ketti Frings. Dr. Rosemary Owens directed No Exit by Paul Sartre. We gave two drama scholarships this year and will give two or three for 1961-62. These scholarships are given for outstanding crew and cast work. At the spring banquet awards for outstanding work were given to Winston Williams and Barbara Ellis White. Chapter officers were Winston Williams and Nancy Harber.

### ETA THETA

Washburn University

Topeka, Kansas

The Male Animal, Separate Tables and The Seven Year Itch, directed by Hugh G. McCausland, were the three major productions of Washburn Players during the year. The Washburn Players Award for the outstanding performer of the year went to senior, Denis Bonnett. The award for the outstanding freshman in drama went to Martha Blaisdell. Special projects of Eta Theta chapter included a production of Twenty Seven Wagons Full of Cotton, directed by Eldon Harding and the sponsorship of Footlight Follies, an all campus variety revue. Newly elected officers of Eta Theta are Molly Hoover, Dorothy Alcorn, and Lee Ann Seem.

**NU KAPPA.** Austin College, Sherman, Texas. Prof Paul W. Beardsley directed J. B. by Archibald MacLeish, An Inspector Calls, and Arsenic and Old Lace. There was a tremendous audience response for J. B. There was a two performance extension, and we were sold out for all performances before opening night. Chapter president was Jayne Chamberlin; secretary, Marcia Wallace.

**THETA EPSILON.** McPherson College. McPherson, Kans. The college theatre of McPherson College presented The Rainmaker and Hamlet under the direction of Prof. James Peter Coulson. Theta Epsilon president was Terrell Phenice; secretary Ihma Wymore.



Scene from Terrence Rattigan's "SEPARATE TABLES", directed by Hugh G. McCausland, Washburn University, Topeka, Kans.



Don Garnett, Nonnie Sanders and Peggy Popplewell in a scene of "BELL, BOOK and CANDLE", Harding College. Ben Holland, director.

**ETA OMEGA**, Harding College, Searcy, Arkansas. The major productions were *The Diary of Anne Frank*, *Bell, Book and Candle*, and *Connecticut Yankee* directed by Ben Holland and Darrel Alexander. The Little Theatre productions were *The Importance of Being Earnest*, *The Marriage Proposal*, *Sorry, Wrong Number*, *The Ugly Duckling*, and *The Old Lady Shows Her Medals*. The productions planned for 1961-62 are *Antigone*, *My Three Angels*, *The King and I*, and *Androcles and the Lion*. The very successful season was climaxed by Alpha Psi Omega's First Annual **SPOTLIGHT** a program of Drama Awards. Recording artist George Grindley V provided the entertainment and the annual awards went to: **BEST BACK-STAGE** - Terry McRae, **BEST DIRECTOR OF A ONE ACT PLAY** - Marvin Growson, **BEST SUPPORTING ACTRESS** - Linda Graff, **BEST SUPPORTING ACTOR** - Gary Aday, **BEST ACTRESS** - Nonnie Sanders, **BEST ACTOR** - Ben Stewart, **THESPIAN OF THE YEAR** - Marcus Walker. Drama Director Ben Holland will return for the 61-62 season.

**GAMMA RHO**, Northwestern State College, Alva, Oklahoma. The major productions were *Anastasia*, *Quality Street*, and *The Rainmaker*. There were nine one-act plays. A children's Theatre production *Beauty and the Beast* was also presented. These plays were directed by Dr. R. Boyce Pennington. Eight members were admitted to Alpha Psi Omega. Gamma Rho cast president was Judi Brown and the sec'y-treas. was Clydene Jones.

**DELTA OMICRON**, Doane College, Crete, Nebraska. Prof. Don Johannes directed *The Patriots*, *Angel Street*, and an evening of one-act plays that included *The Boor*, *A Happy Ending*, and *The Marriage Proposal*. Cast secretary was Peggy Curry.

**SCARLET MASQUE CAST**, Wabash College, Crawfordsville, Indiana. Prof. Charles Scott, director. The long plays presented were *The Skin of our Teeth*, *Othello*, *Death of a Salesman*, and *The Importance of Being Earnest*. Plays selected for the current season are Ibsen's *Brand* and Volpone by Ben Johnson. Ten members were admitted to Alpha Psi Omega. Scarlet Masque president was Brent Sutton and Secy-Treas. was James Ludwig.

**GAMMA DELTA**, New Mexico Highlands University, Las Vegas, New Mexico. Director of the Highlands University Theatre is Dr. Richard O'Connell who directed *Kiss Me Kate*, *Ah Wilderness* and *The Miser* for the 1960-61 season. Cast president was William Henderson; Frances Tur- sic, secretary.

**BETA KAPPA**, Upper Iowa University, Fayette, Iowa. Mrs. William Esters directed *The Matchmaker*, *The King and I*, by Rogers and Hammerstein, *The Soul of Nicholas Snyder* by Jerome K. Jerome. The one-act play, *Cabbages* was presented. The plays selected for 1961-62 are *Inherit the Wind*, *Ghosts* and *The Heiress*. Much greater attention has been given our production this year than last year. Cast president was Gary L. Shaver; cast secretary, Janice Lamport.

**LAMBDA EPSILON**, East Tennessee State College, Johnson City, Tennessee. Prof. Harold E. Frank is director of Patchwork Players. The productions of last season were *The Lark* and *The Diary of Ann Frank*. Chapter officers were Dorsey Smith and Suzanne Cooper.





Ann Whitmore, George Steggerda and John Rosier in John-son's "VOLPONE", Ferris Playhouse, directed by Lyle V. Mayer.

**GAMMA XI**, State College, Dickinson, North Dakota. Our fall production was the old-fashioned melodrama, *Pure as the Driven Snow* with Isben's *A Doll's House* presented early in May. Both productions were directed by Dr. Nydia Joan Reynolds.

**THETA TAU**, University of Southwestern Louisiana, Lafayette, Louisiana. The Southwestern Players, directed by Prof. William W. Ellis staged five major productions: *The Solid Gold Cadillac*, *Twelve Angry People*, *The Importance of Being Earnest*, *Macbeth*, and *A Streetcar Named Desire*. There was an all time high for attendance at our shows. Thirteen were admitted to Alpha Psi Omega. Chapter president was John Leinhardt; secretary, Norman Belieu.

**PI PSI**, Westfield State College, Westfield, Mass. Dr. Wallace Goldstein, director. The Footlighters presented the three-act comedy, *The Late George Apley*, three one-act plays, and several skits and monologues at an assembly program. Twelve students were admitted to Alpha Psi Omega. Betty Thurston was the recipient of a special award for "outstanding contributions to drama at Westfield."

**DELTA TAU**, Ursinus College, Collegeville, Pennsylvania. The Curtain Club of Ursinus College presented as the feature play, *Mr. Barry's Etchings* directed by Dr. George Storey. Cast officers were Irvin Moore, Sandra Motta, and Robert E. Vannucci.

**PI RHO**, Friends University, Wichita Kansas. Prof. Jerry Turpin directed *The Trojan Women* and *The Importance of Being Earnest*. Richard Sutton, cast secretary.



Bob Brewer, Carolyn Stephens, Ben Stewart and Carl Heffington in "Connecticut Yankee in King Arthur's Court," Harding College, Prof. Ben Holland, director.

#### KAPPA RHO

Georgetown College

Georgetown, Kentucky

The Maskrafter productions for the past season were *Our Town*, and *The Madwoman of Chaillot* directed by Prof. Harold L. Hunt. Walter Reed directed *Medea* by Jean Anouilh. Short plays for this season are as follows: *Trifles* by Susan Glaspell, *The New Neighbor* by John Murray, *Overtones* by Alice Gerstenberg, *Which is the Way to Boston* by Ronald Lorenzen, *Riders to the Sea* by John Synge, *The Maker of Dreams* by Oliphant Down, and *Eternal Life* by Fred Eastman. Tentative major productions for next year include the musical *Oklahoma* and *A Midsummer Night's Dream* and *The Glass Menagerie*. Chapter officers were Linda Gay Braner, Dane Rithey, and Marty Deusner.



John Burton, Jo Ellen Barr, Larry Adams, and Billy Lutes in "DIAL M FOR MURDER", Ark. State College, E. Shaw Robinson, director.

**LAMBDA LAMBDA AND ARROWHEAD PLAYERS**, Arkansas State College, State College, Ark. The major productions were *Blithe Spirit* and *Dial M for Murder* directed by E. Shaw Robinson, Jr. There were three short plays entitled *Cry for the Moon* by Gayla Dennis, and *The Dance and Poppa's Reproduction*, both by Elizabeth Lindsay Hilton. Cast officers were Charles L. Hughes and Rosemary Taggart. Productions planned for 1961-62 include *Antigone*, *School for Scandal* and *The Boy Friend*.



Agnes Carlson, Anne Petty, A. W. Powell, Dick School, Dick Schoonman, and Nancy Johnson in "LO AND BEHOLD", directed by Mrs. Dorethe Tucker, Middle Tenn. State College.



Scene from "Look Homeward Angel", directed by Prof. J. Alan Hammack, Central Michigan Univ. Mt. Pleasant, Mich.

**LAMBDA GAMMA**, Middle Tenn. State College, The Buchanan Players, Mrs. Dorethe Tucker, director. The major productions staged during 1960-61 were *Lo and Behold*, *The Mikado*, *The Man Who Came to Dinner*, and *Guest in the House*, a psychological drama. Eighteen members were admitted to Alpha Psi Omega. Cast officers were Betsy Sims and Agnes Carlson. Special awards and trophies were given to Bonnie Hudgens, Burt Barrett, and Bruce Hancock.

**LAMBDA ALPHA**, Blue Mountain College, Blue Mountain, Mississippi. The Mountain Masqueraders staged *Anastasia* by Guy Bolton, directed by Silvia Ann Hall. Shakespeare's *The Tempest* was presented as a May Day production and was a smash hit! Six members were received into Alpha Psi Omega. Cast officers were Rachel Hamilton and Janice Witherspoon.

**NU OMEGA**, College of St. Teresa, Winona, Minnesota. The major productions were *Carousel* and *Mrs. McThing*, directed by Prof. John E. Marzocco. Mr. Robert E. Oram directed *Tartuffe* by Moliere. *Bloomer Girl* will be presented this current season of 1961-62. Seven members were admitted to Alpha Psi Omega. Cast officers are Carole Dwyer, president; Jackie Sieban, secretary.

**RHO DELTA**, Black Hills Teachers College, Spearfish, South Dakota. Props and Liners Drama Club staged *Blithe Spirit*, directed by Steve Archer, *Angel Street*, *Time out for Ginger and Rashomon*, all directed by Charlotte Forsberg. Cast officers were Michael Townsend and Verla Hieb.

**THETA RHO**, Whitworth College, Spokane 53, Washington. Prof. Lloyd Waltz directed *Little Women* and *The Rivals*. Short plays were *Christ in the Concrete City*, *Beauty and the Beast*, *The Happy Journey*, and *When His Kingdom Began* by Sumerau. A brief version of *Romeo and Juliet* was given also. Gordon Warren was president of Theta Rho Cast and ten members were admitted to Alpha Psi Omega.

**ETA NU**, Meredith College, Raleigh, N. C. The Meredith College Playhouse, directed by Miss Velma Gorsage, staged *The Innocents* by William Archibald and *Years Ago* by Ruth Gordon. Cast officers were Zeema Greene and Suzanne Sault.

**PI BETA**, Mount Mary College, Milwaukee 10, Wisconsin. Mrs. S. W. Lister and Edmund Torrance directed *The Other Cinderella* and *The Royal Gambit*. Marianne Steckbeck directed *The Curious Savage*. Maynard Swanson was the technical director of all productions. One-act plays were *Christmas on the Village Square*, Jean Moran, director; *Fear is a Murderer*, Barbara Nemoir, director; *So Long*, Donna Dries, director; *Parade at the Devils Bridge*, Patt Simmons, director; and *Materia Medica*, directed by Sandra Schneider. Barbara Nemoir and Donna Dries were awarded pins as outstanding graduates in drama.

**ETA UPSILON**, Bridgewater College, Bridgewater, Va. Mrs. Elizabeth Geiser directed *The Solid Gold Cadillac* and *Grammercy Ghost*. Our one-act plays rounded out a very successful season; *April 1622*, *The Apollo of Bellac*, *The Marriage Proposal*, and *The Happy Journey*. Cast officers were Alice V. Cudlipp, president; and Judy Row, secretary.

**BETA PHI**, Stephen F. Austin State College, Nacogdoches, Texas. Three major productions were directed by Prof. Merle M. Lentz. *The Gazebo* by Alec Coppel, *The Lady's Not for Burning*, and *Carousel* and two short plays: *The Lesson* by Ionesco and *Red Peppers*. Fourteen people received membership in Beta Phi. Cast officers were Vincent Stewart and Carol Myers.

**IOTA SIGMA**, State Teachers College at Towson, Maryland. Prof. William C. Kramer director. Fifteen students earned national honor society membership in the productions of the College theatre. Cast officers were Paul Budny, Paul Maniloff, and Craig Gerard. *The Snow Man* was given as a Christmas Play for orphan children.

**GAMMA CHI**, Southwestern State College, Weatherford, Oklahoma. The College Theatre directed by Damarise C. Kitch staged two major shows: *Seven Keys to Baldpate* and *Father of the Bride*. Five members were elected to Alpha Psi Omega. Cast president, Reece Elliott.

**LAMBDA**, Washington and Jefferson College, Washington, Pa., Prof. Robert L. Brindley, director of *The Buskin Club*, staged *Twelve Angry Men* by Reginald Rose and *Julius Caesar*. Russell Bell is president of Lambda cast.





Benny Vickous, Marla Brandon, Frank Hammond, and Don Helm in "Dark of the Moon" at Western Kentucky State College. Russell H. Miller director.

## MU LAMBDA

Western Ky. State College

Bowling Green, Ky.

The Western Players, directed by Prof. Russell H. Miller, staged the musical, *Oklahoma*, *Our Town*, *The Male Animal*, and the fantasy, *Dark of the Moon*. The Western Summer Theatre staged *Night Must Fall*, *The Importance of Being Earnest*, and *Our Town*. Our members helped with Community Theatre productions of *Desk Set*, *Bernardine*, and *Separate Tables*. Four plays were staged by the experimental theatre, one of them showing how plays are used to propagandize the Communist philosophy. At the annual Awards Banquet the following members and pledges received awards: Alice Chumbley, Charles Flener, Kay Anderson, Chet Day, Larry Siria, Gloria Cooper, Al Young, Marla Brandon, Wendy Harrison, Don Helm, Judy Vanover, and Benny Vickous. Jane Lovell Pfingston was chapter reporter.



Judith Tartaglia, Jo Ann Blackwood, Anthony Mattar, Mary Robb, Janet Casha, William Reed in "The Silver Cord", Marygrove College, Detroit, directed by Michael Krause.

**PI NU**, Marygrove College, Detroit, 21 Michigan. The Marygrove College Dramatic Society directed by Michael Krause staged *The Silver Cord*, *Amahl and the Night Visitors*, and two children's theatre productions, *Sleeping Beauty* and *Rumpelstiltskin*. Sara Lee Stadelman gave a demonstration of dance drama, and a dance drama production will be given this year. Our members were represented at the Medieval Drama Workshop at Saint Mary's, Notre Dame University, Indiana. Cast officers are Joanne Blackwood and Nan Ellen Rose.

**PI ALPHA**, Eastern Michigan University, Ypsilanti, Michigan. Prof. B. Hulsapple arranged a concert reading of *Look Homeward Angel*, and directed *Teahouse of the August Moon*, and *Othello*. Prof. George Bird directed *Cock-a-Doodle Dandy* by Sean O'Casey and Prof. William Work directed *Pajama Game*. Cast officers were Peter J. Saputo and Karen Boesen.



Scene from the Eva LeGallienne version of Ibsen's "Hedda Gabler," Lycoming College, Williamsport, Pa., directed by Prof. Myers.

**ZETA PI**, Mercer University, Macon, Georgia. Five major productions were staged last season. Audrey Needles directed *What Every Woman Knows*, *The Trojan Women* (Tyronne Guthrie's version of Euripides), and *The Heiress*. Charles Love directed *A Sleep of Prisoners* and *Tartuffe* (Morris Bishop's version of Moliere). Selected for the new season are *Twelfth Night* and *Sarovan's Cave Dwellers*. Cast officers are Brenda Stoney and Susan Otwell.

**GAMMA EPSILON**, Murray State College, Murray, Kentucky. *The Mousetrap* and *The Moon is Blue* by F. Hugh Herbert were both done in arena theatre. *Sleeping Beauty* was a children's theatre play; all three plays were directed by Prof. Robert E. Johnson. Student-directed short plays were *The Boor*, *Riders to the Sea*, *Hello, Out There*, and *Suppressed Desires*. Cast officers were Virginia Below and Bob Wright.

**LAMBDA SIGMA**, South Dakota State College, Brookings, South Dakota. Prof. Karl Theman directed *Carousel*, and Prof. Lawrence Stine directed *George Washington Slept Here*, *Medea*, and a program of original one-act plays written by Mary Kay Fischbach, William Gilbert and Robert Litke. Cast officers were Carole Ries, president; and Gary Kerr, secretary.

**PI OMEGA**, Sterling College, Sterling, Kansas. Prof. Clayton C. Campbell directed *Our Town* and *Everyman Today*, a version by Sorrell. Five student-directed plays were given. Cast officers are George Cain and Glendarae Benbrook.

**BETA OMEGA**, Keuka College, Keuka, Park, New York. The Arion Dramatic Society, Maxine Manther, director, staged *Alice in Wonderland* by Eva LeGallienne and *The Children's Hour* by Lillian Hellman. Chapter officers are Wilma Brewer and Lucy Barnard.

**NU NU**, Findlay College, Findlay, Ohio. The College Theatre presented *The Happiest Millionaire* by Kyle Crichton and the short play, *The Happy Journey to Camden and Trenton*, directed by Irene Sharninghouse. Honor awards were presented to Kenneth Zimmerman, Edward Varian, and Judy Horn. Ronald Martin was cast president.



Paula Minter, Erik Reeves, Travis Williams and Kay Clifton, in "NO EXIT" by Jean Paul Sartre, set designed and play directed Dr. Rosemary Owens, East Texas State College, Commerce, Texas

**THETA PSI**, Hastings College, Hastings, Nebraska. Dr. Harrold C. Shiffler and The Hastings Players staged *Doctor in Spite of Himself*, *The Rivalry* by Norman Corwin, and *The Lark*. Selected for next season are *J. B.*, *Our American Cousin*, and *The Andersonville Trial*. Cast officers are David Cunningham and Carl Manion.

**THETA LAMBDA**, Georgia Southern College, Statesboro, Georgia. The long plays were *Twelfth Night*, *Royal Gambit*, and *See How They Run* all directed by Prof. Robert Overstreet. Dr. Fielding Russell and Miss Kling directed a program of short plays that included *Aria da Capo*, *The Shoemakers Wife*, *Talk to Me Like the Rain*, and *Tiny Closet*. Masquer, our drama organization, has plans to stage *The Crucible* and *Ten Nights in a Barroom* this season. Cast officers are Claude Astin and Jim Fields.

**MU IOTA**, State College of Education, Oswego, New York. Directors of College Theatre are John F. Kingston and Olla G. Rickett. The feature production was *The Browning Version* by Terrance Rattigan. Cast officers were R. Price Milam and Marguerite Boyle.

**LAMBDA MU**, Wartburg College, Waverly, Iowa. The Wartburg Players, Vernon Lestrud, director, presented three major productions: *Martin Luther*, *The Silver Whistle*, and *The Glass Menagerie*. The short plays were *Christ in the Concrete City*, *A Family of Fools*, *An Agon for Athenians*, and *The Wager*. Cast officers are Bruce Bergquist and Kathryn Koob.

**BETA**, Marshall University, Huntington, West, Va. Prof. Clayton Page, director of the University Theatre staged *Dear Delinquent* and *Royal Gambit*. William Kerns directed *The Matchmaker* and a cutting from *The Sea Gull*. Elanie Novak directed *Annie Get Your Gun*. Officers of Beta Cast were Nancy Jett and Betsy Rucker.

**THETA NU**, Oakland City College, Oakland City, Indiana. The College Dramatic Club presented its most outstanding production in its history, *Hamlet*, directed by Margaret E. McConnell. *Grammercy Ghost* was the spring play. Acting award winners this year were Orvil Collis, Brenda Haas, Bill Fonst, Alton Davis, John Wood, Phil Hunt, Judy Ranes, and Sue Gladish.





McPherson College production of "HAMLET" (March, 1961), directed by Prof. James Peter Coulson, Theta Epsilon Capt.



Steve Garman (Paris), Marjorie Thurston (Casandra), and Darrell Woolwine (Hector) in "Tiger at the Gates", directed by Prof. Lee Roy Hicks, Central State College, Edmund, Okla. Costumes by Darlene Hicks. Armor by Beverly Clark.

**IOTA OMICRON**, East Stroudsburg State College, East Stroudsburg, Pennsylvania. Mr. Ralph W. Smith directed *The Diary of Ann Frank*. Faculty advisor is Katherine McFarland. Cast officers were Andrea Shovarsky, Blanche Wassner and Sue Masters. Nine members were accepted by Alpha Psi Omega.

**KAPPA DELTA**, Bethel College, McKenzie, Tennessee. The Bethel Players, directed by Prof. Harry D. Lux, presented *Night Must Fall* by Emyln Williams, *Spark in Judea* by R. F. Delderfield, and the short plays, *Mooney's Kid Don't Cry*, *Case of the Crushed Petunia's* and *The Long Stay Cut Short*. Cast president was Peggy Chalk and secretary, Ann Sisk.

**THETA PSI**, Susquehanna University, Selinsgrove, Pennsylvania. Dr. Bruce L. Nary directed *The Corn is Green* and *Othello*. Five new members were accepted in Alpha Psi Omega. Charles Nelson was cast president and Lynn Manning, secretary.

**GAMMA ETA**, Lenoir Rhyne College, Hickory, North Carolina. The Lenoir Rhyne Playmakers presented four major productions directed by Prof. George J. Spence: *The Taming of the Shrew*, *Family Portrait*, *Trial by Jury*, and *Diary of Ann Frank*. Selected for the present season are *Twelve Angry Men*, *Antigone*, and *South Pacific*. Eighteen members qualified for Alpha Psi Omega. Judy Bittinger was president of the Gamma Eta Cast.

**UPSILON**, Kansas Wesleyan University, Salina, Kan. The major productions were *Angel Street* and *I Remember Mama*, directed by Lilybelle Lewin Carlisle. Seven new members were qualified for membership.

**DELTA EPSILON**, North Central College, Naperville, Illinois. Prof. Donald T. Shanower, director of Theatre Guild staged *The Girl in 509*, *Othello*, and *The Boy Friend* (musical). Prof. Shanower directed *Ile*, *Emperor Jones*, and fourteen workshop plays. Appearances on campus of Eric Salmon, Director of Theatre Outlook, England; and Basil Rathbone were highlights of the past season.

**IOTA NU**, Immaculata College, Immaculata, Pennsylvania. The plays of the Cue and Curtain Club were *The Diary of Anne Frank* and the one-act play, *Riders to the Sea*, directed by Sister Mary Donatus. I. H. M. Iota Nu also sponsored a Theatre Day at which area colleges presented one-act plays for the benefit of high school students. We also sponsored the annual Intramural Play Contest. Cast officers were Justine Maksymik and Diane Viti. Carolyn Seeman is the incoming president.

**PI DELTA**, Midwestern University, Wichita Fall, Texas. The University Theatre presented *The Mouse Trap*, Mark Neiman, director; *The Importance of Being Earnest*, Randall Buchanan, director; *Jack and the Beanstalk* (children's play), Dr. Jennie Louise Hindman, director; *Look Homeward Angel* directed by Dr. Hindman; and *Bell Book, and Candle* directed by Prof. Buchannan. *Waitin' Fer Sun-up* directed by Bain Ellis was presented as part of the Western Week Celebration. Four one-act plays were *The Bear*, *The Browning Version*, *The Trysting Place*, and *Dear Brutus*. A 1961 summer production was *King Midas* and the *Golden Touch*, Pi Delta Cast officers were Kaye Williams and Deanna Marlin.

# DIRECTORY OF THE ALPHA PSI OMEGA

## GRAND DIRECTOR

**DR. YETTA G. MITCHELL**  
New York University  
Washington Square

## GRAND BUSINESS MANAGER

**DR. PAUL F. OPP**  
Box 347, Fairmont, West Virginia  
(Address all communications to the Grand Business Mgr.)

## GRAND STATE MANAGER

**PROF. DONALD GARNER**  
Wayne State University  
Detroit, Michigan

**ALPHA**, Fairmont State College, Fairmont, W. Va.  
**BETA**, Marshall University, Huntington, W. Va.  
**GAMMA**, Washington & Lee University, Lexington, Va.  
**DELTA**, Acadia University, Wolfville, N. S., Canada  
**EPSILON**, Lynchburg College, Lynchburg, Va.  
**ZETA**, Western State College, Gunnison, Colo.  
**ETA**, The College of Idaho, Caldwell, Idaho  
**THETA**, Baker University, Baldwin, Kan.  
**IOTA**, The Johns Hopkins University, Baltimore, Md.  
**KAPPA**, Ottawa University, Ottawa, Kan.  
**LAMBDA**, Washington & Jefferson College, Washington, Penna.  
**MU**, University of Texas, Austin, Texas  
**NU**, University of Houston, Houston, Texas  
**XI**, Chico State College, Chico, Calif.  
**OMICRON**, Wilmington College, Wilmington, Ohio  
**PI**, West Virginia University, Morgantown, W. Va.  
**RHO**, Lincoln Memorial University, Harrogate, Tenn.  
**SIGMA**, Linde College, McMinnville, Ore.  
**TAU**, Texas Technological College, Lubbock, Texas  
**UPSILON**, Kansas Wesleyan College, Salina, Kan.  
**PHI**, Colorado State College of Education, Greeley, Colo.  
**CHI**, Buena Vista College, Storm Lake, Iowa  
**PSI**, Lindenwood College, St. Charles, Mo.  
**OMEGA**, Iowa Wesleyan College, Mt. Pleasant, Iowa  
**ALPHA ALPHA**, University of Mississippi, University, Mississippi  
**ALPHA BETA**, Coker College, Hartsville, S. C.  
**ALPHA GAMMA**, Morningside College, Sioux City, Iowa  
**ALPHA DELTA**, Tarkio College, Tarkio, Mo.  
**ALPHA EPSILON**, Westminster College, Fulton, Missouri  
**ALPHA ZETA**, Central College, Pella, Iowa  
**ALPHA ETA**, Minnesota Teachers College, Moorhead, Minn.  
**ALPHA THETA**, McKendree College, Lebanon, Ill.  
**ALPHA IOTA**, Berea College, Berea, Ky.  
**ALPHA KAPPA**, University of Tampa, Tampa, Fla.  
**ALPHA LAMBDA**, Wisconsin State College, Superior, Wis.  
**ALPHA MU**, Emory and Henry College, Emory, Va.  
**ALPHA NU**, Colgate University, Hamilton, N. Y.  
**ALPHA XI**, Arkansas College, Batesville, Ark.  
**ALPHA OMICRON**, Bloomsburg State College, Bloomsburg, Pa.  
**ALPHA PI**, Millsaps College, Jackson, Miss.  
**ALPHA RHO**, West Virginia Wesleyan College, Buckhannon, W. Va.  
**ALPHA SIGMA**, Louisiana College, Pineville, La.  
**ALPHA TAU**, Mt. Union College, Alliance, Ohio  
**ALPHA UPSILON**, Clarion State College, Clarion, Pa.  
**ALPHA PHI**, State Teachers College, Valley City, N. D.  
**ALPHA CHI**, Shepherd State College, Shepherdstown, W. Va.  
**ALPHA PSI**, Wisconsin State College, La Crosse, Wis.  
**ALPHA OMEGA**, Augustana College, Rock Island, Ill.  
**BETA ALPHA**, Humboldt State College, Arcata, Calif.

**BETA BETA**, Lafayette College, Easton, Pa.  
**BETA GAMMA**, Bethany College, Bethany, W. Va.  
**BETA DELTA**, New York University, Washington Square, New York  
**BETA EPSILON**, Rutgers University, New Brunswick, N. J.  
**BETA ZETA**, East Central State College, Ada, Okla.  
**BETA ETA**, Huntington College, Montgomery, Ala.  
**BETA THETA**, University of Georgia, Athens, Ga.  
**BETA IOTA**, Valparaiso University, Valparaiso, Ind.  
**BETA KAPPA**, Upper Iowa University, Fayette, Iowa  
**BETA LAMBDA**, University of Delaware, Newark, Del.  
**BETA MU**, Union University, Jackson, Tenn.  
**BETA NU**, Arizona State College, Flagstaff, Ariz.  
**BETA XI**, Concord State College, Athens, W. Va.  
**BETA OMICRON**, California State College, California, Pa.  
**BETA PI**, William Jewell College, Liberty, Mo.  
**BETA RHO**, Nebraska State Teachers College, Wayne, Neb.  
**BETA SIGMA**, North Dakota State College, Mayville, N. D.  
**BETA TAU**, Newberry College, Newberry, S. C.  
**BETA UPSILON**, New Mexico Western College, Silver City, N. M.  
**BETA PHI**, Stephen F. Austin College, Nacogdoches, Texas  
**BETA CHI**, Defiance College, Defiance, Ohio  
**BETA PSI**, Kent State University, Kent, Ohio  
**BETA OMEGA**, Keuka College, Keuka Park, N. Y.  
**GAMMA ALPHA**, Southeastern State College, Durant, Okla.  
**GAMMA BETA**, Trinity University, San Antonio, Texas  
**GAMMA GAMMA**, University of Alabama, University, Ala.  
**GAMMA DELTA**, New Mexico Highlands University, Las Vegas, N. M.  
**GAMMA EPSILON**, Murray State College, Murray, Ky.  
**GAMMA ZETA**, Colorado State Univ., Ft. Collins, Colo.  
**GAMMA ETA**, Lemoyne College, Hickory, N. C.  
**GAMMA THETA**, Indiana Central College, Indianapolis, Ind.  
**GAMMA IOTA**, State Teachers College, Abilene, Texas  
**GAMMA KAPPA**, Edinboro State College, Edinboro, Pa.  
**GAMMA LAMBDA**, Baylor University, Waco, Texas  
**GAMMA MU**, Muhlenberg College, Allentown, Pa.  
**GAMMA NU**, Georgia State College of Business ADM., Atlanta, Ga.  
**GAMMA XI**, Dickinson State College, Dickinson, N. D.  
**GAMMA OMICRON**, Shurtleff College, Alton, Ill.  
**GAMMA PI**, Tift College, Forsythe, Ga.  
**GAMMA RHO**, Northwestern State College, Ark.  
**GAMMA SIGMA**, Cascade College, Portland, Ore.  
**GAMMA TAU**, University of South Carolina, Columbia, S. C.  
**GAMMA UPSILON**, Northern Illinois University, DeKalb, Ill.  
**GAMMA PHI**, Rocky Mountain College, Billings, Mont.  
**GAMMA CHI**, Southwestern State College, Weatherford, Okla.  
**GAMMA PSI**, Roanoke College, Salem, Va.  
**GAMMA OMEGA**, Montana State College, Bozeman, Mont.  
**OKLA. GAMMA**, Oklahoma City University, Oklahoma City, Okla.  
**DELTA ALPHA**, University of New Brunswick, Fredericton, N. B., Canada

**DELTA BETA**, Alma College, Alma, Mich.  
**DELTA GAMMA**, Alderson-Broaddus College, Philippi, W. Va.  
**DELTA DELTA**, Hampden-Sydney College, Hampden-Sydney, Va.  
**DELTA EPSILON**, North Central College, Naperville, Ill.  
**DELTA ZETA**, University of Dubuque, Dubuque, Iowa  
**DELTA ETA**, Northwestern State College, Natchitoches, La.  
**DELTA THETA**, State Teachers College, Minot, N. D.  
**DELTA IOTA**, Centenary College, Shreveport, Louisiana  
**DELTA KAPPA**, Baylor College, Belton, Texas  
**DELTA LAMBDA**, Northwestern College, Orange City, Iowa  
**DELTA MU**, Winthrop College, Rock Hill, S. C.  
**DELTA NU**, Florida Southern College, Lakeland, Fla.  
**DELTA XI**, Rensselaer Polytechnic Institute, Troy, N. Y.  
**DELTA OMICRON**, Doane College, Crete, Neb.  
**DELTA PI**, California State Polytechnic College, San Luis Obispo, Calif.  
**DELTA RHO**, Russell Sage College, Troy, N. Y.  
**DELTA SIGMA**, Bethel College, North Newton, Kan.  
**DELTA TAU**, Ursinus College, Collegeville, Pa.  
**DELTA UPSILON**, Texas Christian University, Fort Worth, Texas  
**DELTA PHI**, Slippery Rock State College, Slippery Rock, Pa.  
**DELTA CHI**, Panhandle Agri. and Mech. College, Goodwell, Okla.  
**DELTA PSI**, Mississippi State College, Columbus, Miss.  
**DELTA OMEGA**, Judson College, Marion, Ala.  
**ZETA ALPHA**, Abilene Christian College, Abilene, Texas  
**ZETA BETA**, Stout State College, Menomonie, Wis.  
**ZETA GAMMA**, Simpson College, Indianola, Iowa  
**ZETA DELTA**, Arkansas State Tchrs. College, Conway, Ark.  
**ZETA UPSILON**, Delta State Teachers College, Cleveland, Miss.  
**ZETA ZETA**, Bethany College, Lindsborg, Kan.  
**ZETA ETA**, University of Pittsburgh, Pittsburgh, Penna.  
**ZETA THETA**, Hardin Simons University, Abilene, Texas  
**ZETA IOTA**, Drexel Institute of Tech., Philadelphia, Pa.  
**ZETA KAPPA**, College of the Ozarks, Clarksville, Ark.  
**ZETA LAMBDA**, Central College, Fayette, Mo.  
**ZETA MU**, Ashland College, Ashland, Ohio  
**ZETA NU**, State College of Education, Geneseo, N. Y.  
**ZETA XI**, La Verne College, La Verne, Calif.  
**ZETA OMICRON**, Hendrix College, Conway, Ark.  
**ZETA PI**, Mercer University, Macon, Ga.  
**ZETA RHO**, State Teachers College, Florence, Ala.  
**ZETA TAU**, Texas Western College, El Paso, Texas  
**ZETA UPSILON**, Heidelberg College, Tiffin, Ohio  
**ZETA PHI**, Eastern Ky. State College, Richmond, Ky.  
**ZETA CHI**, Union College, Barbourville, Ky.  
**ZETA PSI**, Ball State College, Muncie, Ind.  
**ZETA OMEGA**, West Virginia State College, Institute, W. Va.  
**ETA ALPHA**, Marietta College, Marietta, Ohio  
**TENN. ETA**, Milligan College, Milligan College, Tenn.  
**KY. LAMBDA**, Kentucky Wesleyan College, Owensboro, Ky.



**TENN. ZETA**, Tennessee Wesleyan College, Athens, Tenn.  
**OKLA. GAMMA**, Oklahoma City University, Oklahoma City, Okla.  
**VT. ETA**, Norwich University, Northfield, Vermont.  
**ETA BETA**, Carson Newman College, Jefferson City, Tenn.  
**ETA GAMMA**, Virginia Polytechnic Institute, Blacksburg, Va.  
**ETA DELTA**, Central State College, Stevens Point, Wis.  
**ETA EPSILON**, Spring Hill College, Mobile, Ala.  
**ETA ZETA**, Upsala College, East Orange, N. J.  
**ETA ETA**, Mary Washington College, Fredericksburg, Va.  
**ETA THETA**, Washburn University, Topeka, Kan.  
**ETA IOTA**, West Texas State College, Canyon, Texas.  
**ETA KAPPA**, Northern Montana College, Havre, Montana.  
**ETA LAMBDA**, E. Montana College of Ed., Billings, Mont.  
**ETA MU**, Little Rock University, Little Rock, Ark.  
**ETA NU**, Meredith College, Raleigh, N. C.  
**ETA XI**, Thiel College, Greenville, Pa.  
**ETA OMICRON**, Carthage College, Carthage, Ill.  
**ETA PI**, Mississippi State College, State College, Miss.  
**ETA RHO**, West Liberty State College, West Liberty, W. Va.  
**ETA SIGMA**, State Teachers College, Troy, Ala.  
**ETA TAU**, Carroll College, Waukesha, Wisconsin.  
**ETA UPSILON**, Bridgewater College, Bridgewater, Va.  
**ETA PHI**, Youngstown College, Youngstown, Ohio.  
**ETA CHI**, Pacific University, Forest Grove, Ore.  
**ETA PSI**, Furman University, Greenville, S. C.  
**ETA OMEGA**, Harding College, Searcy, Ark.  
**THETA ALPHA**, Glenville State College, Glenville, W. Va.  
**THETA BETA**, Georgia State College for Women, Milledgeville, Ga.  
**THETA GAMMA**, La Grange College, La Grange, Ga.  
**THETA DELTA**, The University of Tennessee, Knoxville, Tenn.  
**THETA EPSILON**, McPherson College, McPherson, Kan.  
**THETA ZETA**, Lock Haven State College, Lock Haven, Pa.  
**THETA ETA**, Hood College, Frederick, Md.  
**THETA THETA**, Waynesburg College, Waynesburg, Pa.  
**THETA IOTA**, Western Carolina College, Cullowhee, N. C.  
**THETA KAPPA**, San Francisco State College, San Francisco, Calif.  
**THETA LAMBDA**, Georgia Southern College, Statesboro, Ga.  
**THETA MU**, University of Minnesota, Duluth, Minn.  
**THETA NU**, Oakland City College, Oakland City, Ind.  
**THETA XI**, George Peabody College, Nashville, Tenn.  
**THETA OMICRON**, Texas Wesleyan College, Fort Worth, Texas.  
**THETA PI**, Pacific Lutheran College, Parkland, Wash.  
**THETA RHO**, Whitworth College, Spokane, Wash.  
**THETA SIGMA**, Missouri Valley College, Marshall, Mo.  
**THETA TAU**, Univ. of Southwestern Louisiana, Lafayette, La.  
**THETA UPSILON**, Radford State College, Radford, Va.  
**THETA PHI**, Susquehanna University, Selinsgrove, Pa.  
**THETA CHI**, Eastern Oregon College, La Grande, Ore.  
**THETA PSI**, Hastings College, Hastings, Neb.  
**THETA OMEGA**, State University of N. Y., Fredonia, N. Y.  
**IOTA ALPHA**, Pembroke State College, Pembroke, N. C.  
**IOTA BETA**, River Falls State College, River Falls, Wis.  
**IOTA GAMMA**, Cedar Crest College, Allentown, Pa.  
**IOTA DELTA**, McMurry College, Abilene, Texas.  
**IOTA EPSILON**, S. W. Texas State College, San Marcos, Texas.  
**IOTA ZETA**, Mercyhurst College, Erie, Pa.  
**IOTA ETA**, C. W. Post College, Greenvale, N. Y.  
**IOTA THETA**, Moravian College, Bethlehem, Pa.  
**IOTA IOTA**, Sam Houston State College, Huntsville, Texas.  
**IOTA KAPPA**, Davidson College, Davidson, N. C.  
**IOTA LAMBDA**, Westminster College, Lemars, Iowa.  
**IOTA MU**, Arkansas A. M. and N. College, Pine Bluff, Ark.  
**IOTA NU**, Immaculate College, Immaculate, Pa.  
**IOTA XI**, Incarnate Word College, San Antonio, Texas.  
**IOTA OMICRON**, State Teachers College, East Stroudsburg, Pa.  
**IOTA PI**, Our Lady of the Lake College, San Antonio, Texas.  
**IOTA RHO**, Coe College, Cedar Rapids, Iowa.  
**IOTA SIGMA**, Maryland State College, Towson, Maryland.  
**IOTA TAU**, Longwood College, Farmville, Va.  
**IOTA UPSILON**, Belhaven College, Jackson, Miss.  
**IOTA PHI**, American University, Washington, D. C.  
**IOTA CHI**, Columbia College, Columbia, S. C.  
**IOTA PSI**, Manchester College, North Manchester, Ind.  
**IOTA OMEGA**, Davis-Elkins College, Elkins, Va.  
**KAPPA ALPHA**, Berry College, Mount Berry, Ga.  
**KAPPA BETA**, Gannon College, Erie, Pa.  
**KAPPA GAMMA**, S. W. Missouri State College, Springfield, Mo.  
**KAPPA DELTA**, Bethel College, McKenzie, Tenn.  
**KAPPA EPSILON**, Briarcliff College, Sluox City, Iowa.  
**KAPPA ZETA**, Penn College, Cleveland, Ohio.  
**KAPPA ETA**, Ferris Institute, Big Rapids, Mich.  
**KAPPA THETA**, Central Michigan State University, Mt. Pleasant, Mich.  
**KAPPA IOTA**, Southwestern College, Memphis, Tenn.  
**KAPPA KAPPA**, University of Portland, Portland, Ore.  
**KAPPA LAMBDA**, Flora MacDonald College, Red Springs, N. C.  
**KAPPA MU**, Oregon College of Education, Monmouth, Ore.  
**KAPPA NU**, West Virginia Institute of Technology, Montgomery, W. Va.  
**KAPPA XI**, Frostburg State College, Frostburg, Md.  
**KAPPA OMICRON**, Belmont College, Nashville, Tenn.  
**KAPPA PI**, Greensboro College, Greensboro, N. C.  
**KAPPA RHO**, Georgetown College, Georgetown, Ky.  
**KAPPA SIGMA**, N. W. Missouri State College, Maryville, Mo.  
**KAPPA TAU**, Idaho State College, Pocatello, Idaho.  
**KAPPA UPSILON**, Eastern New Mexico University, Portales, N. M.  
**KAPPA PHI**, Texas College of Arts and Ind., Kingsville, Texas.  
**KAPPA CHI**, Lewis and Clark College, Portland, Ore.  
**KAPPA PSI**, Clemson College, Clemson, S. C.  
**KAPPA OMEGA**, Wayland Baptist College, Plainville, Tex.  
**LAMBDA ALPHA**, Blue Mountain College, Blue Mountain, Miss.  
**LAMBDA BETA**, Keene Teachers College, Keene, N. H.  
**LAMBDA GAMMA**, Middle Tennessee State College, Murfreesboro, Tenn.  
**LAMBDA DELTA**, Morris Harvey College, Charleston, W. Va.  
**LAMBDA EPSILON**, East Tennessee State College, Johnson City, Tenn.  
**LAMBDA ZETA**, Appalachian State College, Boone, N. C.  
**LAMBDA ETA**, Drew University, Madison, N. J.  
**LAMBDA THETA**, Anderson College, Anderson, Ind.  
**LAMBDA IOTA**, Midland College, Fremont, Neb.  
**LAMBDA KAPPA**, Wagner College, Staten Island, N. Y.  
**LAMBDA LAMBDA**, Arkansas State College, State College, Ark.  
**LAMBDA MU**, Wartburg College, Waverly, Iowa.  
**LAMBDA NU**, Mississippi Southern College, Hattiesburg, Miss.  
**LAMBDA XI**, Ft. Hays Kansas State College, Hays, Kan.  
**LAMBDA OMICRON**, Elon College, Elon, N. C.  
**LAMBDA PI**, Villanova University, Villanova, Pa.  
**LAMBDA RHO**, Central State College, Edmond, Okla.  
**LAMBDA SIGMA**, South Dakota State College, Brookings, S. D.  
**LAMBDA TAU**, Emmanuel College, Boston, Mass.  
**LAMBDA UPSILON**, Mansfield State College, Mansfield, Pa.  
**LAMBDA PHI**, Dickinson College, Carlisle, Pa.  
**LAMBDA CHI**, University of Omaha, Omaha, Neb.  
**LAMBDA PSI**, Tusculum College, Greenville, Tenn.  
**LAMBDA OMEGA**, State Teachers College, Oneonta, N. Y.  
**MU ALPHA**, Hillsdale College, Hillsdale, Mich.  
**MU BETA**, Emory University, Emory University, Ga.  
**MU GAMMA**, Northeastern State College, Tahlequah, Okla.  
**MU DELTA**, New Mexico A. & M. College, University Pk., New Mex.  
**MU EPSILON**, Adams State College, Alamosa, Colo.  
**MU ZETA**, American University, Cairo, Egypt.  
**MU ETA**, Texas State College, Commerce, Texas.  
**MU THETA**, John Carroll University, Cleveland, Ohio.  
**MU IOTA**, Oswego State College, Oswego, N. Y.  
**MU KAPPA**, Sacramento State College, Sacramento, Calif.  
**MU LAMBDA**, Western Ky. State College, Bowling Green, Ky.  
**MU MU**, Beaver College, Jenkintown, Pa.  
**MU NU**, Francis T. Nicholls State College, Thibodaux, Louisiana.  
**MU XI**, Boston University, Boston, Mass.  
**MU OMICRON**, Memphis State University, Memphis, Tenn.  
**MU PI**, Creighton University, Omaha, Neb.  
**MU RHO**, Rhode Island College of Education, Providence, R. I.  
**MU SIGMA**, Albright College, Reading, Pa.  
**MU TAU**, Central Wash. College of Ed., Ellensburg, Wash.  
**MU UPSILON**, Looming College, Williamsport, Pa.  
**MU PHI**, Southern State College, Magnolia, Ariz.  
**MU CHI**, Adelphi College, Garden City, L. I., N. Y.  
**MU PSI**, Hofstra College, Hempstead, N. Y.  
**MU OMEGA**, Duquesne University, Pittsburgh, Pa.  
**NU ALPHA**, State Teachers College, Livingston, Ala.  
**NU BETA**, Parsons College, Fairfield, Iowa.  
**NU GAMMA**, Westminster College, New Wilmington, Pa.  
**NU DELTA**, Saint Mary's College, Winona, Minn.  
**NU EPSILON**, Evansville College, Evansville, Ind.  
**NU ZETA**, Trinity College, Washington, D. C.  
**NU ETA**, Niagara University, Niagara University, N. Y.  
**NU THETA**, Hamilton College, Clinton, N. Y.  
**NU IOTA**, Hartwick College, Oneonta, N. Y.  
**NU KAPPA**, Austin College, Sherman, Texas.  
**NU LAMBDA**, Notre Dame College of Md., Baltimore, Md.  
**NU MU**, Marylhurst College, Marylhurst, Ore.  
**NU NU**, Findlay College, Findlay, Ohio.  
**NU XI**, St. Mary's Dominican College, New Orleans, La.  
**NU OMICRON**, Indiana State Teachers College, Indiana, Pa.  
**NU PI**, North Georgia College, Dahlonega, Ga.  
**NU RHO**, The College of Emporia, Emporia, Kan.  
**NU SIGMA**, Lake Forest College, Lake Forest, Ill.  
**NU TAU**, Carroll College, Waukesha, Wis.

**NU Upsilon**, Kearney State College, Kearney, Neb.  
**NU Phi**, Morgan State College, Baltimore, Md.  
**NU Chi**, Northeastern University, Boston 15, Mass.  
**NU Psi**, Newark College of Rutgers University, Newark, N. J.  
**NU Omega**, College of St. Teresa, Winona, Minn.  
**SCARLET MASQUE CAST**, Wabash College, Crawfordsville, Ind.  
**PI Alpha**, Eastern Michigan University, Ypsilanti, Mich.  
**PI Beta**, Mount Mary College, Milwaukee, Wis.  
**PI Gamma**, McNeese State College, Lake Charles, La.  
**PI Delta**, Midwestern University, Wichita Falls, Texas  
**PI Epsilon**, Gettysburg College, Gettysburg, Pa.  
**PI Zeta**, Washington College, Chestertown, Md.  
**PI Eta**, Birmingham Southern College, Birmingham, Ala.  
**PI Theta**, Newark College of Engineering, Newark, N. J.

**PI Iota**, Southern Oregon College of Education, Ashland, Ore.  
**PI Kappa**, David Lipscomb College, Nashville, Tenn.  
**PI Lambda**, Illinois College, Jacksonville, Ill.  
**PI Mu**, Brooklyn College, Brooklyn, N. Y.  
**PI Nu**, Marygrove College, Detroit, Mich.  
**PI Xi**, Nebraska State College, Chadron, Neb.  
**PI Omicron**, Lamar State College of Technology, Beaumont, Texas  
**PI Pi**, Converse College, Spartanburg, S. C.  
**PI Rho**, Friends University, Wichita, Kansas  
**PI Sigma**, Mercy College, Detroit, Mich.  
**PI Tau**, Pennsylvania State Teachers College, Shippensburg, Pa.  
**PI Upsilon**, Tenn. Polytechnic Inst., Cookeville, Tenn.  
**PI Phi**, Springfield College, Springfield, Mass.  
**PI Chi**, Mississippi College, Clinton, Miss.

**PI Psi**, State Teachers College at Westfield, Westfield, Mass.  
**PI Omega**, Sterling College, Sterling, Kansas  
**RHO Alpha**, Pfeiffer College, Misenheimer, N. C.  
**RHO Beta**, Boston State College, Boston 15, Mass.  
**Rho Gamma**, Martin Branch, Univ. of Tennessee, Martin, Tenn.  
**RHO Delta**, Black Hills State Teachers College, Spearfish, S. D.  
**RHO Epsilon**, Valdosta State College, Valdosta, Ga.  
**RHO Zeta**, Northern Teachers College, Aberdeen, S. D.  
**RHO Eta**, Lebanon Valley College, Annville, Pa.  
**RHO Theta**, Paterson State College, Paterson, New Jersey  
**RHO Iota**, Eastern Washington College, Cheney, Washington  
**RHO Kappa**, Worcester Polytechnic Inst., Worcester, Mass.  
**RHO Lambda**, Framingham State College, Framingham, Mass.



ALPHA PSI OMEGA KEY AND BADGES

## The Balfour Bluebook

The newest edition of this complete fraternity jewelry catalog brings to you selections for gifts and personal accessories. New crested rings, bracelets, tie bars, cuff links, jewel cases and initiation gifts.

Mail post card for free copy.

L. G. BALFOUR COMPANY  
ATTLEBORO, MASSACHUSETTS

Date.....

Please send:

- ☐ Blue Book  
☐ Knitwear Flyer  
☐ Ceramic Flyers

- ☐ Christmas Cards  
 Samples:  
☐ Stationery  
☐ Invitations  
☐ Programs

Name .....

## BALFOUR SERVICE . . . WORTHY OF YOUR TRUST

10% Federal Tax and any State or City Tax in addition.

### PRICE LIST

Plain badge,

1/10 double rolled gold plate	\$ 4.00
Plain standard badges, 10K gold	5.00
Close set pearl badge	8.50
Crown set pearl badge	12.50
Coat of arms guard,	
Coat of arms guard, gold plated	1.50
10K gold, with 1 pearl	3.00
Key, 10K gold	7.50
Key, 1/10 10K double rolled gold plate, 10K ends	5.25

For Key-Pin add \$1.00 to price.

10% Federal Tax and any State or City Tax in addition.

### HOW TO ORDER:

Regulations: All orders for keys, pledges and recognitions to come in on official slips are to be approved by: Paul F. Opp, Box 347, Fairmont, West Virginia.

### STATIONERY—PROGRAMS INVITATIONS

Samples on Request

Official Jeweler to  
Alpha Psi Omega

*L. G. Balfour Company*  
ATTLEBORO, MASSACHUSETTS

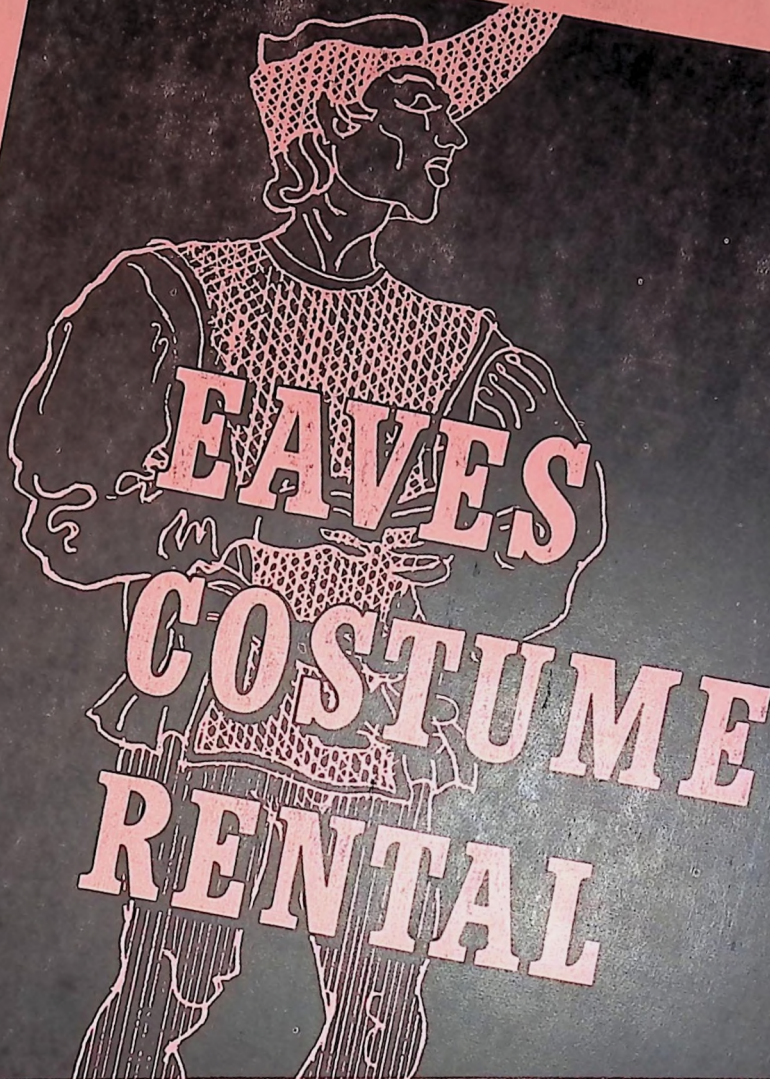
Attleboro, Massachusetts





Walter Reed, genial staganager of "OUR TOWN", Georgetown College, Georgetown Kentucky, Mr. Harold Hunt, director. Mr. Reed is a graduate student in acting this year.





a specialized costume rental service for:

- Schools • Colleges • Little Theatres
- Church Groups • Lodges • Clubs
- and all other non-professional groups

"Send name and date of production for free description or illustrated plot and estimate now—reasonable rental prices."

WIN up to \$1,000.00

ANNUAL EAVES AWARDS

EAVES BONUS PLAN GIVES YOU  
FREE THEATRICAL EQUIPMENT as a no-cost bonus!

EAVES COSTUME COMPANY, INC.

Eaves Building  
New York 19, N. Y.

151 West 46 Street  
Plaza 7-3730

FAIRMONT PRINTING & OFFICE FURNITURE COMPANY