



The PLAYBILL



ALPHA PSI OMEGA

19



60



TABLE OF CONTENTS

★ ★ ★

Univ. of Mississippi Makes USO Tour.....	3
by Dr. Charles M. Getchell	
Evolution of the One-Act Play.....	5
by Byron Schaffer, Jr.	
Another Children's Touring Theatre.....	8
by Jerry Richards	
Oswego Stages Everyman.....	9
by John C. Fisher	
Painless Summer Theatre.....	11
by George Harding	
Using Originality in Your Review.....	12
by Tom Behm	
The Dramatic Reading of Poetry.....	13
by John Lee Welton	
Supper Theatre Is Super Theatre.....	15
by J. R. Hancock	
Plays at Special Royalty Rates.....	16
What the Member Colleges Are Doing.....	19
Directory of Chapters.....	46

COVER PICTURE

Holden Potter as Richard III in battle scene of Vagabonds production of "RICHARD III," directed by Vivian Fusillo, Florida Southern College, Lakeland, Florida.

FRONTISPIECE PICTURE

Barbara Breau, as Anne, in "THE DIARY OF ANNE FRANK," a Dominican College Players' production, directed by Sister Mary Joanna, O.P., Ph.D., St. Mary's Dominican College, New Orleans, La.



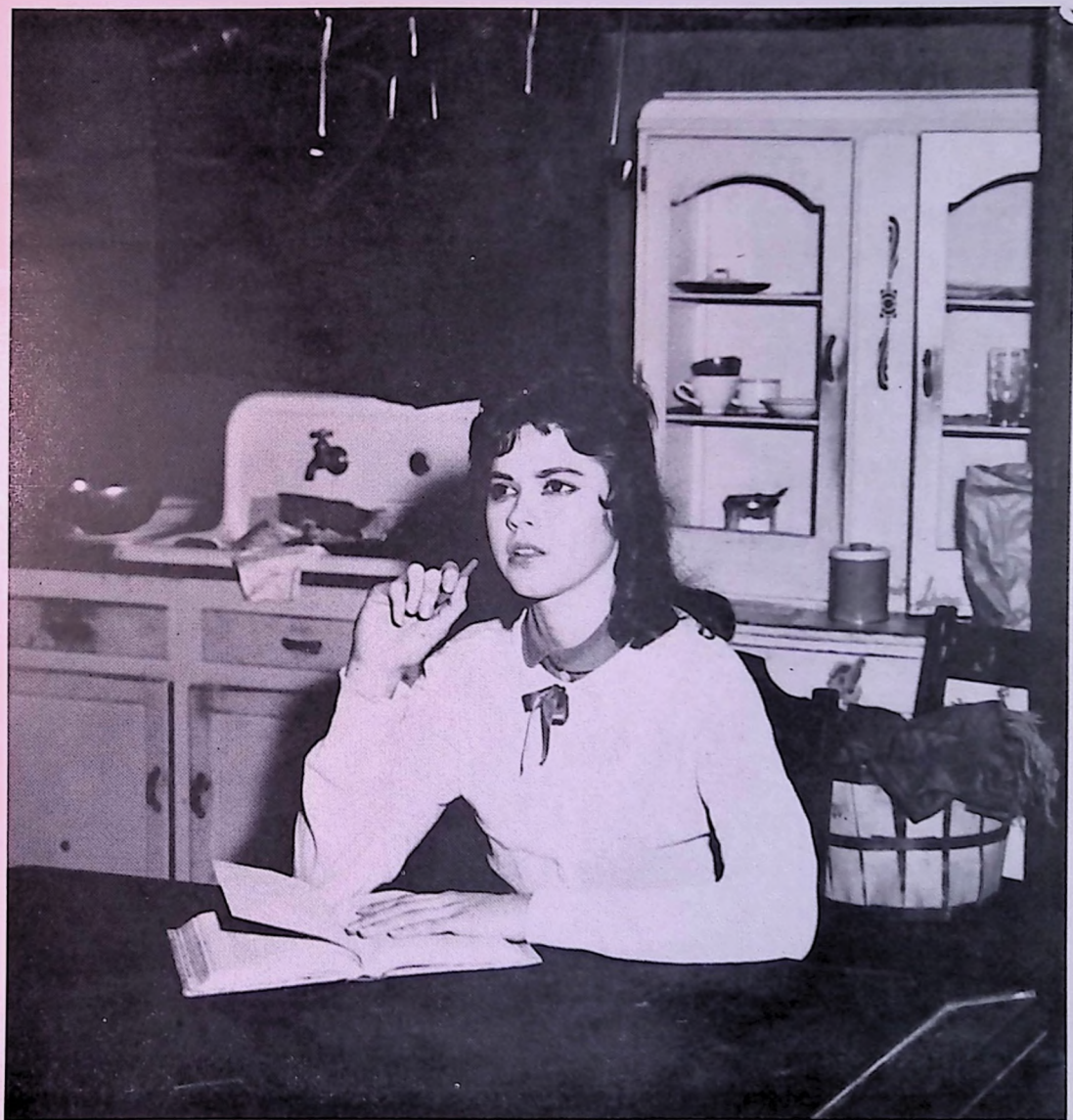
The PLAYBILL

A YEAR BOOK OF COLLEGE DRAMATICS

DR. PAUL F. OPP, *Editor*

A Publication Devoted to College Plays and How to Stage Them

1960





Scene from "Life With Father," directed by Lance Goss, Millsaps College Players, Jackson, Miss. Costumes by Eaves.—
Photo by Billy Bowie

The PLAYBILL

Published Annually

ALPHA PSI OMEGA DRAMATIC FRATERNITY

*Dr. Paul F. Opp, Grand Business Manager,
Box 347, Fairmont, W. Va.*

Address Communications to Business Manager

The purpose of THE PLAYBILL is to afford college and university dramatic organizations opportunity to acquaint themselves with what is being done by their contemporaries and to serve the Fraternity as an official organ.

UNIV. OF MISSISSIPPI MAKES USO TOUR

by Dr. Charles M. Getchell, Alpha Alpha

During the past season the University Theatre of the University of Mississippi was selected by the touring committee of the American Educational Theatre Association to make a USO tour of the North-East Command with a production of "The Glass Menagerie." This production was taken to the military installations of Newfoundland, Labrador, Greenland and Iceland, leaving the campus October 21. Prior to the tour performances were given on campus and at Biloxi and Jackson, Mississippi, to publicize the tour and call attention to the AETA and USO. Final preparations were made at McGuire Air Force Base, New Jersey, where special arctic clothing was provided before the flight to Thule, Greenland, where five performances were given. At Sondrestrom base a performance was given to an enthusiastic audience, and many expressions of appreciation were received for a TV broadcast of the show over the closed circuit system of the base so that men on

duty at outlying stations could enjoy the performance.

The troupe then took plane for a flight to Goose Bay for several performances there and at Pepperell AFB, Harmon Field, and the Naval Air Station at Argentia. At Argentia, movies were cancelled on the days of performances, and this was a great help in setting up for the show and the matter of developing audiences. Members of the company visited schools and talked to classes on theatre and play production. The final phase of the trip was the flight to Iceland for performances at Keflavik Air Base. The opportunity for sightseeing in the capital city, Reykjavik, was appreciated. The company returned to the university on November 26, 1959, having traveled over 15,000 miles and having given nineteen performances.

The personnel of the company consisted of



Scene from University of Mississippi USO show, "The Glass Menagerie", Dr. Charles M. Getchell, director.

the director and six students, each of whom had specific technical duties. Four were graduate assistants, carrying all their course work in theatre. The students making the tour were Mrs. Helen Ward Cassell, Gulfport, playing Amanda; Donald McBryde, Poplarville, as the Gentleman Caller;

Bob Grubbs, Winston-Salem, N. C., as Tawn; Josephine Alexander, Vicksburg, as Laura; Jon Keady, Starkville, as electrician for the production, and Sara Lockhard, McComb, doing hand props and sound. Everyone was enthusiastic about the experience and the project as a whole.



Cast of "The Importance of Being Earnest," directed by Don Tornquist at Augustana College, Rock Island, Illinois. Left to right are Carolyn Munson, Jim Storms, Sam Wilson and Nancy Saelen.

EVOLUTION OF THE ONE-ACT PLAY

by Byron Schaffer, Jr.

The one-act play is a form of theatre which has existed from the very beginnings of drama, but it has only achieved significant notice in recent years. Masters of modern drama such as Strindberg, Materlinck, and Synge, to name a few, have devoted a great deal of their talents to writing one-act plays; contemporary playwrights such as Williams and Ionesco have established their early reputations in part because of their facility with the one-act form; and one of the most talked about productions in New York this season is a one-act play: Samuel Beckett's "Krapp's Last Tape."

One of the greatest difficulties in studying the evolution of the one-act play form is making an inclusive definition of the term. Christopher Fry's "A Sleep of Prisoners," a serious verse drama which runs for one hour and 45 minutes, has been called a one-act play, and "The Tridget of Greva," a farce by Ring Lardner, has been included in Bennett Cerf's *24 Favorite One-Act Plays* in spite of the fact that it has a total running time of three minutes. One-act plays have been designed for a single character on a single set, and other productions labeled as one-act plays have employed as many as 30 characters and a multitude of sets. The fact that most modern plays which purport to be one-acts are devoid of any intermissions is not

sufficient to warrant the assumption that lack of intermissions is a hallmark of the one-act play, for by this standard most of Shakespeare's work would be one-acts, for most, if not all, of his plays were performed without being marred by such intervals. The sorry best one can do in defining the term "one-act play" is to say that it applies generally to plays which are written to be performed without intermission and with a total running time of something less than one hour.

The earliest manifestation of the one-act in an organized form is found in the scripts of the classic Greek theatre. During the annual festival to the God of Wine, Dionysus, the Athenians presented a public play contest. The writer who competed in the portion of the contest which was devoted to tragedy was required to submit four plays. Three of these plays were tragedies which were performed together as a trilogy; the fourth play, called a "satyr play," was performed immediately after the presentation of the major works. This satyr play was generally ribald in nature and dealt with some of the characters from the preceding trilogy in situations related to the general plot narrated in the trilogy. The only complete extant script of a satyr play is Euripides' "Cyclops"; scholars generally feel that the bawdy, less elevated nature of this play is typical of the satyr plays of the period.



STREETCAR NAMED DESIRE—Directed by Prof. James W. Swain, October 1959. Sam Houston State College, Huntsville, Texas.

Probably they were designed to ease the tensions created by the preceding tragedies and thus allow the audience a less abrupt return to normality.

The early eighteenth century witnessed a revival of the Greek custom in England, where the short comical play following a more serious work was called an "after piece." Although the after piece reflected a general awakening of interest in classic forms, it was slightly different in concept than the satyr play. The after piece was usually a farce which often contained singing and dancing and was designed to "mitigate the horrors of the preceding tragedy." The after piece was sometimes little more than an abbreviated version of a popular full-length comedy; however, many after pieces were written especially for the purpose by such well known people as David Garrick.

As the tradition of the after piece grew firmly entrenched in the minds of the theatre-going public, various producers began to supplement the playbill still more by adding another short play at the beginning of the program. These "curtain raisers" were generally farcical in nature, and by the middle of the nineteenth century they were common additions to an evening's theatrical fare. An audience of the time certainly received its money's worth, for a typical complete bill included a one-act curtain raiser, a five-act tragedy, a one-act after piece, and perhaps a few solo songs and dance numbers thrown in as extra garnishment. Such a tradition is a direct forerunner of

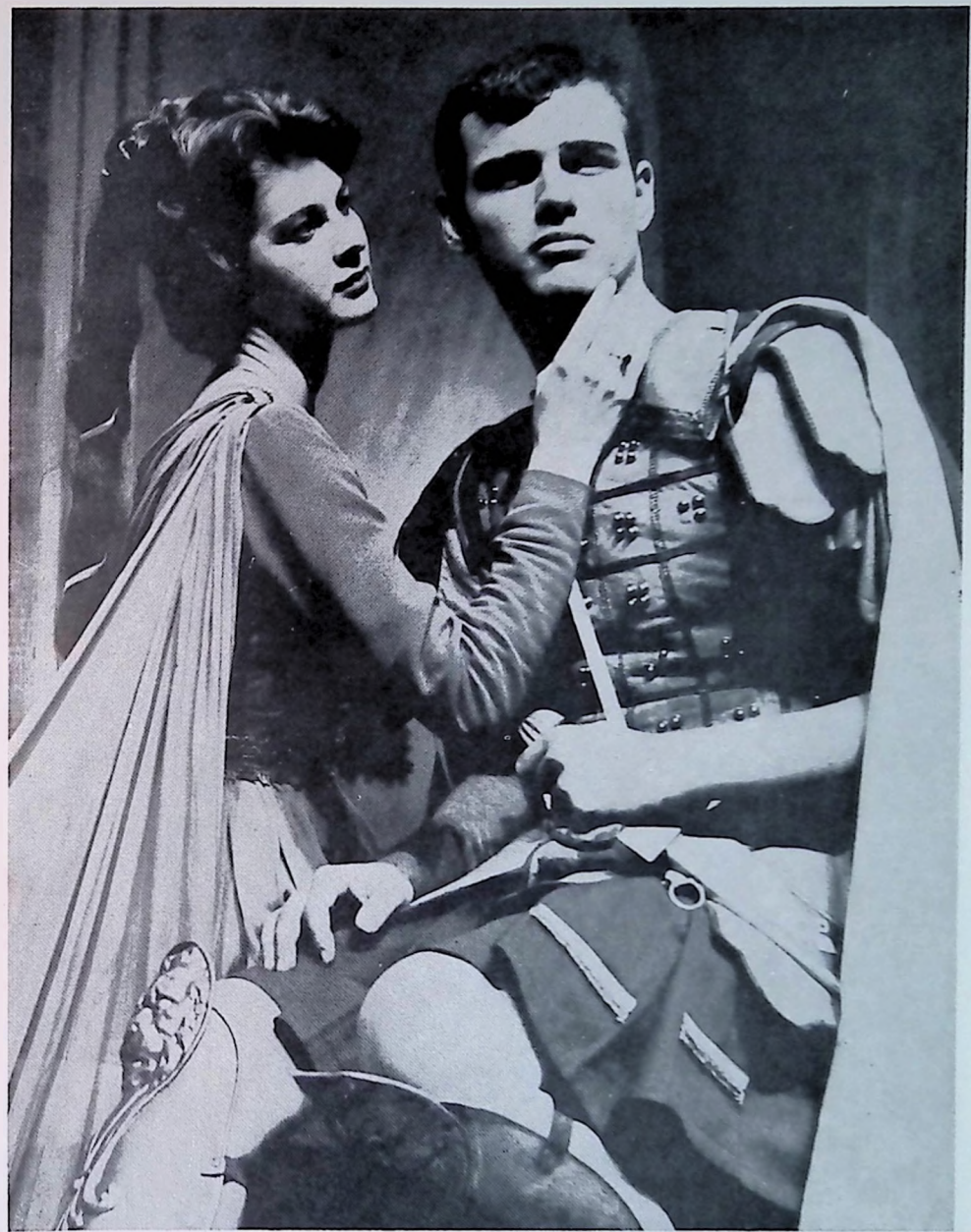
our present day "giant triple feature, plus cartoons, plus short subjects, plus newsreels, plus bingo" lures designed to bolster sagging motion picture box office receipts.

The last quarter of the nineteenth century witnessed a change of interest in the one-act play. Curtain raisers and after pieces began to lose their popularity, but at the same time serious writers began to experiment with shorter forms as an end in itself and not as a mere frivolous addition to a standard length play. It was recognized that the one-act form provided an admirable opportunity to create an uninterrupted mood or character relationship. In addition, the form allowed the ambitious playwright an opportunity to experiment with new technique without subjecting himself to the more arduous task of creating a full length play.

It was this shift in emphasis which gave the one-act play the stature it enjoys today. Its very brevity has the advantage of forcing the playwright, the director, and the actor to intensify the mood. With a tradition of comic effectiveness behind it, the one-act form begins to show lasting promise as a serious vehicle as well. O'Neill, Saroyan, Odets, Miller, Williams, and many others have begun the creation of a corpus of significant one-act drama. Numerous productions of these plays by school and civic groups has increased their popularity with audiences. The one-act play is growing up.



Scene from Act I of "Missouri Legend" by Elizabeth Ginty, on first permanent arena stage in West Va. directed by Prof. Byron Schaffer, Jr. West Virginia Inst. of Technology. (L. to R.) Dave Thompson, John Matheney, Anne Belmont, James Hopkins, Dale Henley.



Jackle Caden as Lavinia, Tem Fowlkes as the captain in the Millsaps College production of "Androcles and the Lion," by Lance Goss. Costumes by Eaves; Photo by Billy Bowle

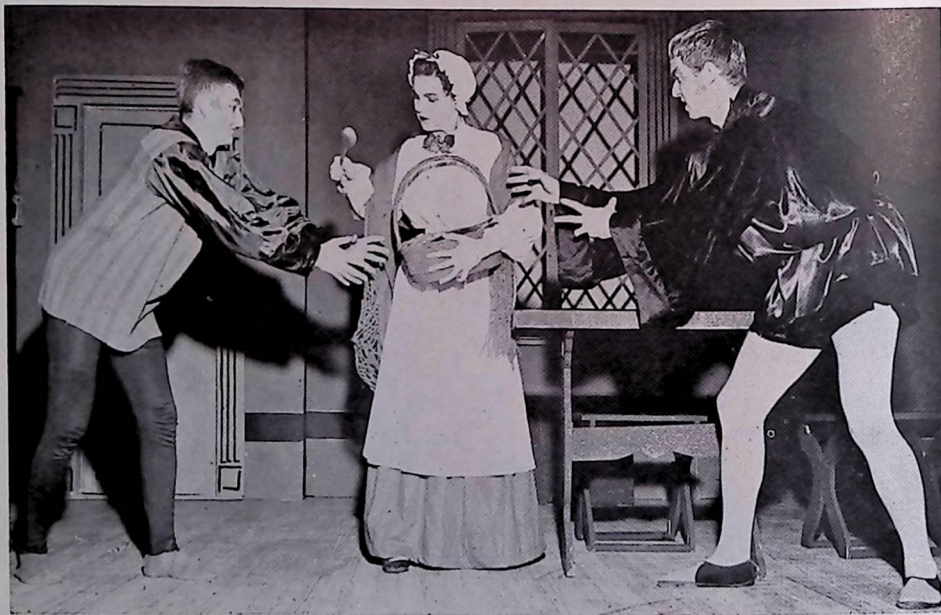
ANOTHER CHILDREN'S TOURING THEATRE

by Jerry Richards, Henry Ford Community College

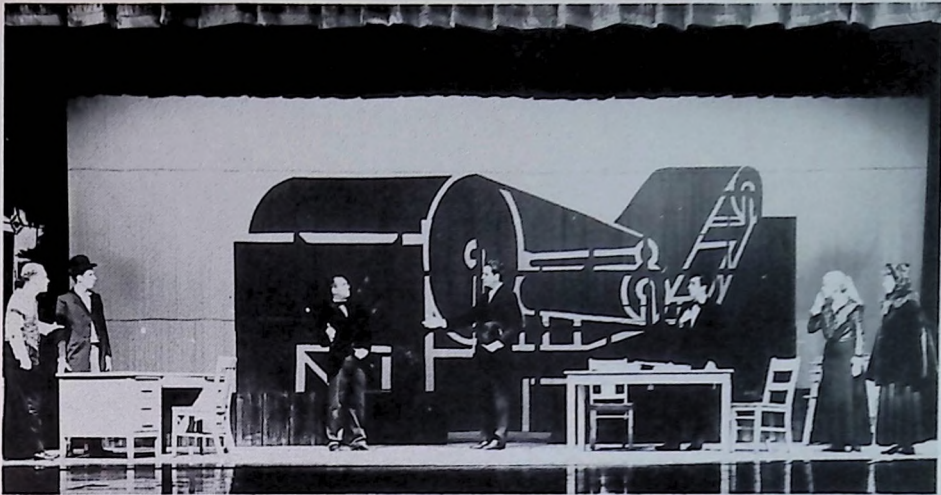
Another important problem was solved by selecting a liaison person to coordinate the elementary school schedule and the schedules of the college students. This person set up time schedules that would fit in with the elementary class periods and that would also fit the student's free time at the college. All the arrangements regarding packing, transportation, dressing rooms, and return transportation was handled by this person. This person also had the responsibility of keeping both the principal of the elementary school and the director of the show informed on all problems regarding time, space, equipment and technical problems. Bulletins were also sent occasionally to inform the elementary school of the planning and development that went into the production as well as a synopsis of the story to be presented. This bulletin also contained suggestions regarding critical or evaluation sheets that the elementary students could give us after the production. By this we hoped to learn what held the most appeal for the children so we might have a guide in the selection of our future presentations. On the whole, the group felt that this was a very inspiring as well as theatrically educational experience and plan to continue the program in the future.

This past year the Henry Ford Community College was proud to join the growing list of colleges presenting an annual children's touring show. After some investigation we were encouraged to learn that the elementary schools of the Dearborn area would welcome this type of educational experience for their students. Our theatre group then began a thorough study of the areas of children's shows: play selection, scenery and costume design, scene construction, lighting, sound, and the transportation involved in the tour. After much reading of scripts we decided that "Rainbow Palace," by Helen McKimmon met all the standards of our evaluation chart.

Our entire group worked together in the construction of scenery and costumes. Set pieces were designed with winged and hinged additions so that both sides could be used in different acts. Costumes were also designed so that one article could be changed or something could be added to a costume to make it serve the needs of several characters. This compactness of scenery and costumes helped solve the transportation problem to different schools. The technical crew drew a complete layout of each auditorium in order that the crews in charge of lighting, sound and scenery would know beforehand what facilities and what problems each auditorium presented.



L. to R: John Kuba, Julie Chandler, and Don Howell in the annual children's play, "The King of the Golden River," Texas College of Arts and Industries. Jean Taylor, director; Keith Kennedy, technical director.



Scene from the Miller-Ibsen "An Enemy of the People," Bakersfield College production, directed by Dr. Frank Wat-
trion, Bakersfield, California. Robert Clark, technical director.

OSWEGO STAGES EVERYMAN

by Prof. John C. Fisher

In presenting "Everyman" at the College of Education, Oswego, New York, it was our purpose to capture the mood of the fifteenth century allegory and to embellish upon it, to some extent, with modern theatrical devices such as lighting and music. Masks made up on the face were designed to reveal character to the audience in the manner of the medieval mask. Fellowship, for instance, wore a clown-like make-up with a perpetual smile; Kindred wore a vivid red; Goods a gold, and Good Deeds, a white mask with soft blue, Madonna-like features. Tights, leotards and capes of allegorical colors gave both a medieval and a modern sense that attested the universality of the drama.

Area lighting was also used symbolically with the various moods portrayed in red, white, and blue spots, and music was called upon to supplement the mood. "Veni Sancte Spiritus," by John Dunstable, the fifteenth century composer, formed the background music at the beginning of the play as the lights came up on an over shadowing Celtic cross, part of the set by George McDade, the student director. An English part-song, "Tappster, Drinker," introduced Everyman, and the Gregorian "Requiem Mass" saw him to the tomb as the lights faded on the cross.

The purpose of this experimental production is to broaden experience with the use of new techniques and with plays not usually produced. In the recent past under the direction of the present advisor, we have presented "Don Juan in Hell" and a program entitled "Men and Women: Variations on a Theme" in which Browning's poems were read. We have also recorded parts of plays upon the request of the faculty of the English Department of the college.



Leonard M. Sutton as Everyman, George McDade, Death in "Every-
man," Oswego College of Education, John C. Fisher, director



"Medea" was presented by the Dominican College Players, under the direction of Sister Mary Joanna, O.P., Ph.D., head of the speech and drama department of St. Mary's Dominican College, celebrating the Golden Jubilee anniversary of the college.

PAINLESS SUMMER THEATRE

by George Harding, Oregon College of Education

(The PLAYBILL has carried several articles on conducting summer drama courses for credit in connection with a summer theatre at some recreation area and established by the college or university Drama Department. This article presents another approach . . . setting up drama courses in connection with a nearby well-established summer theatre.)—Editor's note.

The subtitle of this article could be "No Blood, Sweat, or Tears." Of course, neither the title nor subtitle are strictly true, because looking at the subject from the standpoint of an administrator, there are certain additional responsibilities to be assumed. However, this added burden is so slight, compared with what it would be if the Speech Department conducted a Summer Theatre program of its own, that it can almost be called "painless."

For many years we have wanted to establish a summer theatre at the Oregon College of Education. Giving a summer school play lacked the concentration of effort and educational value of a summer theatre. A lack of faculty "manpower" and commuting summer students were other handicaps, and a small community that could offer little financial support made it impossible to set up our own summer theater. There is always a group of students, however, who have an interest and a desire to participate in dramatic activities, and who would profit educationally from such a

program. This interest and need of the students, the Drama Department felt should be met. Fortunately near our campus we have the Pentacles Summer Theatre that has been in operation for the past six years and has gained a high reputation for the excellence of its productions; and during the season, tickets are at a premium. Like most independent production groups, Pentacle is composed of a small number of enthusiastic, dedicated individuals, surrounded by a larger group of volunteers that are continually changing from play to play. A certain percentage of these volunteers will often start out with a great deal of enthusiasm which quickly fades under pressure. Since the theatre has no hold over them, they drop out and their unfulfilled responsibilities must be assumed by others. This situation holds true particularly in respect to the field of production. Everyone seems to want to act, but few want to devote the hours, in the evenings and on week ends, necessary to build and paint sets, make properties, assemble or make costumes, and arrange lights.

Two years ago a cooperative plan was devised which tended to solve the problems of the Theatre and satisfy the desires of the College, but, at the same time, preserved the independence of each in their respective fields. A course, Summer Theatre, was offered by the Drama Department which carried a variable amount of credit, from one to three hours. The students in this course report to the Theatre and, after a conference with the pro-



Scene from "St. Joan," Eastern New Mexico Univ., Dr. R. Lyle Hagan, director. George W. McKinney, technical director. The setting featured five projections on theater's plaster dome cyclorama.

duction director, are assigned to the supervision of a person in charge of a mutually agreeable phase of the production. They work under his exclusive direction.

After the close of the production each student submits a written report to the College instructor who has general supervision of the course. This report lists the specific activities the student has carried out, under whose supervision or direction he worked, the extent of the activity or activities, the approximate time consumed, and, most important of all, what he gained, in terms of increased knowledge or skill in the field of play production, from these activities. The Instructor, after reading these reports confers with the individuals who supervised the students' activities at the Theatre, to determine the quality of the work done. From these two sources he determines the grade. During the life of this course students have

participated in all phases of play production and several, in addition, have been members of casts. From their reports it appears that they have gained a great deal from their participation, and their Theatre supervisors have enthusiastically confirmed their claims.

Through this course the College has secured the educational benefits of a Summer Theatre with a great deal less responsibility and effort than would have been necessary if we had conducted our own organization, and, at the same time, Pentacle Theatre has gained through the efforts of the students. In addition, neither has infringed upon the province of the other.

We hope, as the enrollment in this course grows, to add a course of study, with regular class meetings. In this way the course would be enriched for the student and the Theatre would gain the benefits of more thoroughly trained personnel.

USING ORIGINALITY IN YOUR REVIEW

by Tom Behm, Iota Rho

A college revue that is made up of sketches and popular song hits might be easy to arrange and to stage, but it certainly would not be very original or very good. We call our Coe College revue *Pasquinade*, a word that means a satirical point or lampoon. *Pasquinade '60* was a project that called for a variety of talent and required original treatment of every sketch, skit, song and dance number that we used. Our faculty advisor wrote a good opening number and music for it was composed by a music major, Don Haerle. With this rousing opening number the pace did not lag one minute. This is the first essential of the good college review: Keep it light, keep it fast, and keep it varied.

The main fixture for obtaining originality in the successful review is to use a running vein of comedy or satire about different problems of the local campus such as the disappearance of the five-cent cup of coffee at the Student Center, or the problem of the Old Main pigeons. These numbers and this ingredient never fails to delight and entertain our audience.

Another essential of the successful review is varied arrangement of dances, sketches, novelties, one-line blackouts, and musical numbers. Separate solos and sketches with a nice mixture of both, and keep as many people as possible in the eye of the audience by using a large cast, but one that is

not too unwieldy. We also approve the trend of simplicity in costuming the show. Place a premium on elegance and slickness. In *Pasquinade '60* we selected black as a basic color; the girls adding aprons and hats in certain numbers. Costumes and stage setting was kept to a minimum.



Scene from "*Pasquinade '60*," Coe College, Cedar Rapids, Iowa, Tom Behm, director, Clemma Mosier and Steve Semmelmeier.

Following our performance of *Pasquinade '60*, we had several offers for performances in the area, but we limited our outside performances to one before the Cedar Rapids Executives Club. Plans are already in progress for *Pasquinade '61*.

THE DRAMATIC READING OF POETRY

by John Lee Welton, Wayland Baptist College

One of the most rewarding experiences that has come to Wayland Baptist College in many years was its dramatization of James Weldon Johnson's "God's Trombones." "God's Trombones" is a collection of old time Negro folk sermons written in poetry. Some of our world's greatest dramatic happenings have been written into a few well chosen words of poetry. Many poems contain all of the elements of a good play: plot, characterization, mood, color.

As in most dramatic productions, imagination and hard work are the main factors for success. Dramatized poetry can be a simple reading with a few lighting effects or an entire stage production with sound effects, choral and instrumental background, and settings to match the moods. It can be presented in a small room or a huge auditorium. It can be presented once or a dozen times with little or no additional cost. It can be toured to schools, churches, or anywhere there is an audience.

The Wayland drama department started the project, in connection with the music department, in preparation for a Christmas program. We intended to give only one performance, but we immediately started receiving requests for more performances. Before we had finished the run of the presentation, we had given "God's Trombones"

seven different times and had toured it to five different towns. Approximately three thousand people viewed the seven performances.

The Wayland International Choir started working on the background music at the first of the school year. A few weeks later the drama department started to work on the solo readings and staging for the production. The setting for the production consisted of a plain canvas backdrop which reflected various colors of lights, a platform with steps on each side for the speakers, and the choir risers. The platform was located center stage with the choir risers on either side and to the front. Along with the choral background we also used a drum and cymbals to simulate thunder and lightning. For the changing moods of the selections, we changed the color of the lights on the canvas backdrop. The speakers were side lighted with two overhead spotlights and the choir was lighted with the border reds and blues.

In the original script only two solo readers were used. However, we felt that variety could be added by letting a different person read each of the different poems. We had five students as solo readers, rather than the original two.

The readers found a wonderful experience in working with the aid of the music and lighting



"The Creation," a scene from the dramatized collection of poems called God's Trombones. Presented by Wayland Baptist College under the direction of Mr. John Lee Welton.



Scenes from Central College's Mid-West premiere of "Romanov and Juliet," Prof Maurice Birdsall, director. (L. to R.) Norma DeBeer as Juliet; John Grooters, Igor—Robert Wiersema, Dave Loynachon—Bill Lubenow as the Primemilster.

effects. The readers seemed to capture the moods of poems with a much deeper understanding than most readers who read the material without added back ground. The readers and the choir worked separately until the last few rehearsals, and both were amazed at how well the two components seemed to blend together when we did combine them.

The program opened with the choir singing a hymn. As the last strains of the hymn faded out, the first speaker climbed the steps to the platform. As each new speaker ascended the steps, the choir offered background music in the mood of the next selection.

The first selection is in the form of a prayer, followed by "The Creation," telling how God created the heavens and earth and finally man. Opportunities for excellent lighting effects are present in this number. "Noah Built the Ark" and "Go Down Death" were the next two readings. "The Judgment Day," the closing number, also provided opportunities for excellent lighting. In its original form the program lasted only twenty minutes, so we introduced the reading "Noah Built the Ark" which extended the program another ten minutes. We are certainly glad that we did this, since the number turned out to be the most thrilling of the selections given.

The first step in preparing for a program of this type is to be sure of a good dramatic selection. "God's Trombones" is a professionally prepared selection with the choral background composed to fit the moods of the various readings. Many other poems, however, would lend themselves to choral backgrounds which were not written especially

for them. The selections should have a main theme around which the program would be built.

The director should then analyze each of the selections and see what moods are presented in them. He can then build his lighting effects and staging around these various moods. While the choir and readers are working, the lighting director should be plotting out his lighting to fit the moods.

The director should select his readers not only for reading ability, but also for physical appearance. We felt that make-up and costume would detract from the general feeling of the production, therefore we played it in formal attire. Without the aid of make-up and costume, the natural physical appearance of the reader becomes of major importance.

If a choral background is to be used, your choral director should have the analyzed script in his hands in plenty of time to find the particular musical selections for the various moods found in the reading selections. He will also need more time to work with the choir than the reading director will need with his readers. Each of the reading selections can be worked with individually, thereby making rehearsal periods more convenient to the director and the reader. We used only about four rehearsals together before presentation. With careful planning, these four rehearsals were all that were needed to make the show fit together.

If you have never tried any dramatized poetry, we would like to suggest that you plan some for the coming season. We think you will find it to be one of the most rewarding dramatic experiences you have ever had.



"Under Milk Wood" by Dylan Thomas, College of Saint Teresa, Winona, Minn. Prof. John Marzocco, director. In presenting the concert reading of this poem-play, using fourteen readers, the director insisted upon almost perfect voice flexibility to characterize the many roles of the play. The whole spectacle was centered in the "organ of voices" projecting the town's population to the audience.

SUPPER THEATRE IS SUPER THEATRE

by Prof. J. R. Hancock, Frank Phillips College

Educational theatre is in our curriculums to provide the student with a challenge, chance for experimentation, and an expansion of the mind. And as Frank Lloyd Wright has said, "The mind is a combination of the hand, heart, head, and imagination all working together." The directors of educational theatre find their work stimulating but their function as directors is to communicate this "stimulation" to their students. There is no one thing which can accomplish all of these—rather, it is a composite.

One idea which could help to meet some of these criteria for educational theatre is supper theatre. Supper theatre is different and certainly provides a challenge—as well as jobs for everyone! As the name indicates, supper is served, then the dramatic performance is presented.

The supper does not have to be a big problem. Students can furnish different dishes and it can be served buffet style. You can make it as fancy as you wish but I have found that the simplicity of the supper aids the relaxed atmosphere which is conducive to a receptive audience for the production.

The intimacy connected with supper is easily attained with producing your plays in-the-round. If you have space problems, a cafeteria or gymnasium would serve very well. If you have lighting problems *The Playbill* has had some articles in the past on some easily planned lighting for arena style productions. Lighting is not an unsurmountable problem however.

Play selection is always a problem but supper theatre poses no more problems than your usual proscenium or arena style productions. Some possibilities are: a long one-act (Fry, Miller, Perl, and Ionesco are authors who come to mind immediately as furnishing scripts), several good, short one-acts, scenes or cuttings from longer plays, or any combination you wish to devise. A caution might be that you continue to stress quality drama since you are offering supper as an inducement. Your play should furnish more food—for thought!

Supper theatre is such a different and cooperative undertaking that students enjoy it very much. I think you will find that you and your audience will have had a fine time too—and isn't that what theatre is for!

PLAYS AT SPECIAL ROYALTY RATES

All the principal publishers of plays have been generous in supplying a list of titles that are available to the members of our national honorary society at special royalty rates. All payments of royalty are made direct to the publisher. Directors of dramatics are advised to conduct negotiations for royalties on plays that are not on this list with the company holding the royalty rights. An agreement on the royalty should be reached before beginning rehearsals. If forms are wanted for applying for a special royalty quoted on these plays, please write to the Grand Business Manager.

SAMUEL FRENCH

25 West 45th Street, New York 36, N. Y.

Three-Act Plays

	Catalogue Rates	Special Rates
Drink to Me Only.....	\$50	\$35
Emperor's Clothes.....	50	25
Escapade.....	50	25
Love and Let Love.....	50	25
Green Bough.....	25	20
Hay Fever.....	50	25
This Happy Breed.....	50	25
Tons of Money.....	25	15
Glad Tidings.....	50	25
Black Chiffon.....	50	35
The Power and the Glory.....	35	25
George and Margaret.....	25	15
Ring Around Elizabeth.....	25	20
Deep Blue Sea.....	50	25
The Vigil.....	35	25
I Like It Here.....	35	25
Magnificent Yankee (Lavery).....	50	25
You Touched Me.....	50	25
Lace on Her Petticoat.....	50	25
Comic Strip.....	35	25
The Beautiful People.....	25	20
All Summer Long.....	50	25
A Play for Mary.....	35	25
Yes, My Lord.....	35	25
Pink String and Sealing Wax.....	25	20
The Gioconda Smile.....	35	25
It's Never Too Late.....	25	20
Midsummer.....	50	25
Girls of Summer.....	50	35
His and Hers.....	50	25
Quadrille.....	50	25
Ladies of the Corridor.....	50	25
Mademoiselle Colombe.....	50	25
The Confidential Clerk.....	50	25
To Dorothy a Son.....	35	25
The Guest Cottage.....	35	25
The Righteous Are Bold.....	50	25
Dragnet.....	35	25
The Young and Beautiful.....	50	25
The King's Standards.....	25	20
Pictures in the Hallway.....	50	25
Square Root of Wonderful.....	50	25
The Living Room.....	50	35
Maybe Tuesday.....	50	30
Natures' Way.....	50	30
Uncle Willie.....	50	30

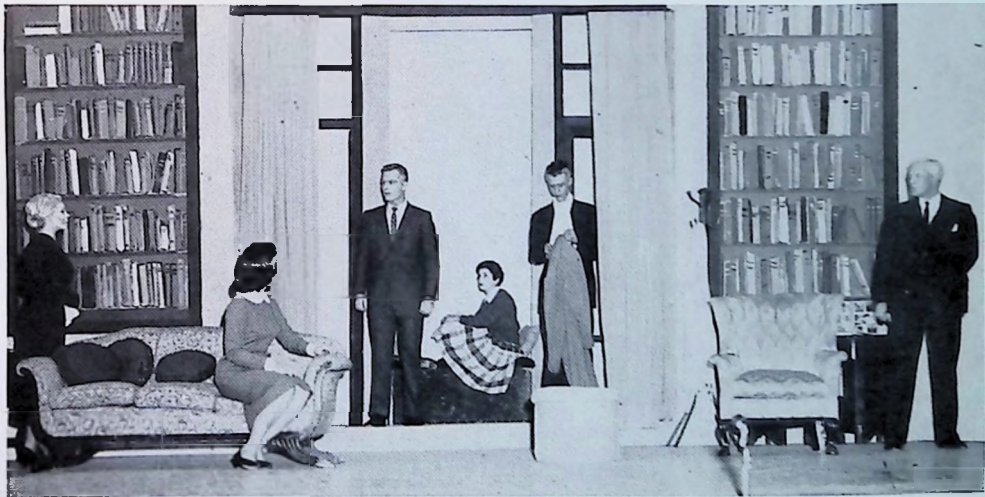
WALTER H. BAKER COMPANY

109 Summer St., Boston 10, Mass.

Title	Catalogue Rates	Special Rates	
		1st Per.	2nd Per.
Five Little Peppers.....	\$ 5.00	\$ 5.00	\$ 2.50
Adventures of Huckleberry Finn, The.....	10.00	7.50	7.50
Adventures of Tom Sawyer, The.....	10.00	7.50	7.50
Matter With Mildred.....	25.00	20.00	15.00
Paper Plates for Papa.....	25.00	20.00	15.00
The Overnight Ghost.....	25.00	20.00	15.00
The Christies.....	25.00	20.00	15.00
Sing Out, Sweet Land.....	50.00	50.00	25.00
House of Atreus.....	10.00	7.50	7.50
The Barretts.....	25.00	20.00	15.00
Ghosts (Ginsbury).....	15.00	10.00	10.00
Brontes of Harworth Parsonage, The.....	15.00	10.00	10.00
Connecticut Yankee.....	25.00	20.00	15.00
Doctor's Orders.....	25.00	20.00	15.00
Enchanted Cottage, The.....	25.00	20.00	15.00
Expressing Willie.....	25.00	20.00	15.00
Fellow Needs a Friend, A.....	25.00	15.00	10.00
First Mrs. Fraser, The.....	25.00	20.00	15.00
Fountain of Youth, The.....	25.00	15.00	10.00
Gold in the Hills.....	25.00	20.00	15.00
I Have Five Daughters.....	15.00	15.00	12.50
Inspector General, The.....	15.00	15.00	10.00
Jane Eyre (Carleton).....	15.00	15.00	10.00
Edie-Across-the-Street.....	25.00	20.00	15.00
Man Who Married a Dumb Wife, The.....	25.00	20.00	15.00
Mary, Mary, Quite Contrary.....	25.00	20.00	15.00
Milestones.....	25.00	20.00	15.00
Mollusc, The.....	25.00	20.00	15.00
Monsieur Beaucaire.....	10.00	10.00	7.50
Old Homestead, The.....	25.00	15.00	10.00
Royal Occasion.....	25.00	20.00	15.00
Rip Van Winkle.....	15.00	15.00	10.00
Shubert Alley.....	25.00	20.00	15.00
To My Husband.....	25.00	20.00	15.00
Tourists Accommodated.....	15.00	10.00	10.00
Wappin Wharf.....	25.00	20.00	15.00
Master Pierre Patelin.....	5.00	5.00	5.00
Hit With a Horseshoe.....	25.00	20.00	15.00
Miranda.....	25.00	20.00	15.00
Knee Deep in Trouble.....	10.00	7.50	5.00
Feminine Touch.....	15.00	15.00	10.00
Too Young, Too Old.....	25.00	20.00	15.00
And There Were Voices.....	15.00	10.00	10.00
Glad Tidings.....	25.00	20.00	15.00
Jump Over the Moon.....	25.00	20.00	15.00
Prexy and Son.....	10.00	7.50	5.00
Still Small Voice.....	25.00	20.00	15.00
Wuthering Heights.....	25.00	20.00	15.00
Gentlemen's Daughters.....	25.00	20.00	15.00
Legend of Sleepy Hollow (musical).....	25.00	15.00	15.00



Howard Skinner, seated, with (L. to R.) Jerry Weaver, Joe Johnson, Ronnie McManus, Harry Gambino, Dick MacConnell
In Texas Wesleyan College production of "Kiss Me Kate," Mason Johnson, director.



(L. to R.) Sharon Brown, Nina Dugger, Ronnie McManus Rosalee Graves, Rob Pritchett, and Bob Cash in a scene from
Texas Wesleyan's production of "The Potting Shed," Mason Johnson, director.



Marti Hinson (Antigone), Bonnie Reeves Scott and Jan Adair in "Antigone," West Texas State College Buffalo Masquers, Prof. William A. Moore, director. Set by Robert L. Antrim. Photo by Gort Rushmer.

CAST REPORTS

WHAT THE MEMBER-COLLEGES ARE DOING

ETA IOTA

West Texas State College

Canyon, Texas

Our new Branding Iron Theatre was opened on this, the Golden Anniversary year of our campus, and the Buffalo Masquers staged four major plays, directed by Prof. William A. Moore: *Midsummer Night's Dream*, *Visit to a Small Planet*, *Antigone* and *Rope*. The Christmas Show was written by a student and was called *The Child and the Star*. Nine pledges were invited to Eta Iota Cast. Cast officers are Erin Wertenberger, Rena Aikens, and J. Scott Glenn.

ALPHA ALPHA

University of Mississippi

University, Mississippi

A highly successful U.S.O. tour to South America with *The Glass Menagerie*, under the direction of Dr. Charles M. Getchell was made during the past year by the University Players. Other plays of the season were *RUR*, directed by Miss Anne Daniel. Dr. Getchell directed *Berkeley Square*. Bob Grubbs directed *Great God Brown* and Shaw Robinson directed *The Women*. Thirteen people were admitted to Alpha Psi Omega. Andrew J. Ritch is president of Alpha Alpha and Jon Keady, secretary.

BETA IOTA

Valparaiso University

Valparaiso, Indiana

The 1958-59 season began with Capek's *RUR*. Following this impressionistic drama came Thornton Wilder's delightful farce *The Matchmaker*. In February the selection was Menotti's music drama *The Consul*. The year's classic was Euripides' *Electra*, and the final major production of the year was the musical *Kismet*. Eleven one-act plays were produced by graduating seniors. Outstanding events sponsored by Beta Iota included a program of dramatic scenes presented by Madame Tore Segelke, Norway's leading actress; a theatre trip to Chicago to see *My Fair Lady*; a lecture, film, and slides on the Japanese Noh and Kyogen plays presented by Dr. Seth Ulman; and an informal workshop at which the leading speaker was Prof. John Gassner. Dr. Gassner, a speaker on the University Centennial Lecture Series, was also our guest of honor at the annual Alpha Psi Omega banquet given for the eight newly initiated members of the organization.



Scene from "The Crucible," Mercyhurst College, directed by Miss Helen Kelley.

LAMBDA UPSILON

Mansfield State College

Mansfield, Pennsylvania

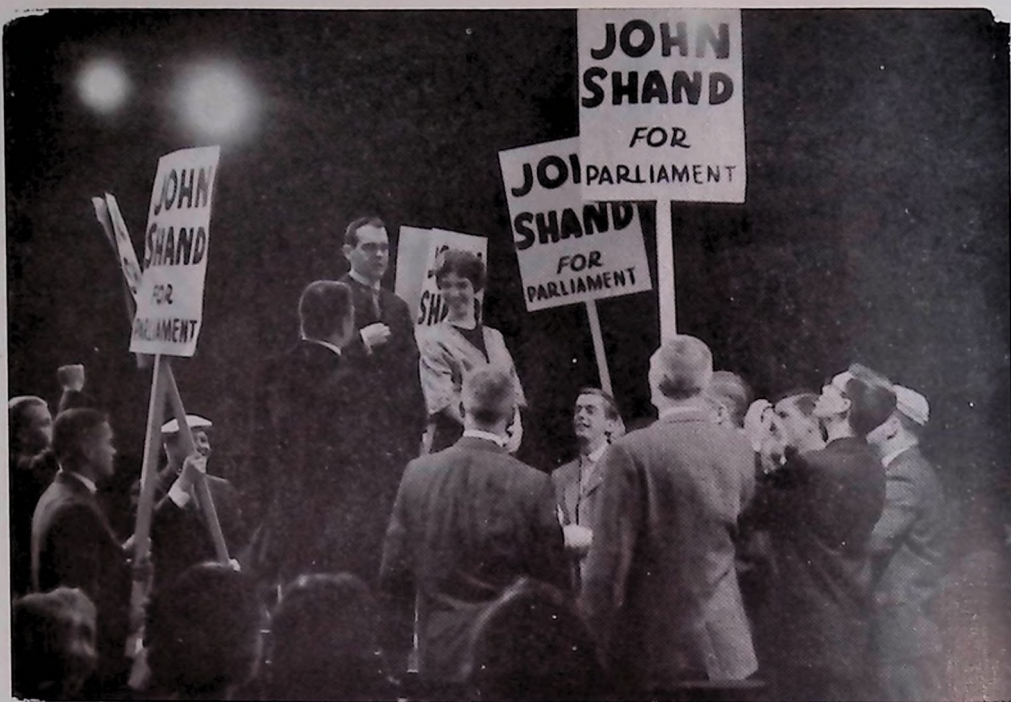
The major production of The Players was Thornton Wilder's *The Matchmaker*, directed by Joseph E. Conaway. This play was taken to the Alfred Drama Festival in May. A highlight of the season was *A Theatre Omnibus*, featuring scenes from contemporary plays that was presented in arena style on the stage of the college auditorium with the audience seated on risers surrounding the action. The Theatre Omnibus played to good audiences for six evening performances and was an innovation in intimate style theatre which was well received by the audience. Eight members were received into Alpha Psi Omega. Cast president was Ted Newton; secretary, Bonnie Lugg.

IOTA ZETA

Mercyhurst College

Erie, Pennsylvania

The Mercyhurst College Drama Society staged as its fall production Arthur Miller's *Crucible*, depicting the Salem witch trials. The directing class produced *An Evening of Drama*, consisting of three one-act plays in March: *The Plum Tree*, *Strange Victory*, and *A Man Goes Forth to War*. This provided an entertaining program. The spring production of *Pride and Prejudice*, by Helen Jerome was a happy ending to a successful year. Miss Helen Kelly, faculty director, supervised all productions. President of the Club this year was Lolly Lockhart, who will work in stock this summer. The secretary-treasurer was Peggy Baldwin.



Stanley Pratt and Susan Cole as "John" and "Maggie Wylie" in the Hillsdale College production of Barrie's "What Every Woman Knows." Professor George Hale, director.

MU ALPHA

Hillsdale College

Hillsdale, Michigan

Barrie's *What Every Woman Knows*, Latham's Christmas one-act, *A Sign Unto You*, and Osborne-Creighton's *Epitaph for George Dillon* were directed by Prof. George H. Hale. We had our first experience as a "traveling company," with three performances of *A Sign Unto You* in churches in metropolitan Detroit and environs. Audiences were enthusiastic about this venture and scheduled for this fall are more performances in other cities of Michigan. Outstanding actors were Susan Cole, Craig Kallen, Walter R. Martin, Susan McColl, Stanley Pratt, and Anna Stonehouse; and outstanding production staff members were Jane Berry, Barbara McGeorge, Roger Purdy, and Melissa Williams. Five members were admitted to Mu Alpha Cast.

PI ALPHA

Eastern Michigan University

Ypsilanti, Michigan

Eastern Michigan University presented the first full season in our new Daniel L. Quirk Dramatic Arts Center. The season commenced with three student-directed one-acts: *Hello Out There*, *Red Peppers*, and *The Ugly Duckling*. Prof. George Bird next presented *Dark of the Moon*, Bill Hulsopple directed Tennessee Williams' *Summer and Smoke*, William Work directed Shakespeare's *Taming of the Shrew*, and Bill Hulsopple directed the 1960 summer production, *Time of the Cuckoo*. At our annual banquet, awards were presented to the following people: Marshall Borden, Karen Boesen, Donna Snyder, Richard Thiede, Daryl Fairchild, Peter Saputo, Leona Pohonski; and Joanne Regan was awarded the Unsung Hero Key. Nineteen new members were added to the Pi Alpha cast. In 1960-61, the season of plays will be: *Teahouse of the August Moon*, *Cock-a-Doodle Dandy*, *Othello*, and *Pajama Game*. A classic film program will also supplement the regular season of plays.

ZETA XI

La Verne College

La Verne, California

This was by far one of La Verne's most successful seasons. Miss Dorothy Dupler, faculty director, chose Giraudou's *The Madwoman of Chaillot* and Kao-Tong-Kia's classic *Lute Song* to open and close our schedule of productions. Lloyd Thomas made outstanding contributions to the success of our work by skillfully directing Jean Anouilh's version of *Antigone* and Albert Johnson's one-act play, *Roger Williams and Mary*. Denny Wise directed *Mama's Getting Married*, by Jay Tobias; Carol Arnold directed Ruth Angell Purkey's *Hangs Over Thy Head*. Ten students were initiated into Alpha Psi Omega with the aid of the cast president, Don Kindell, and secretary, Annamae Rensberger. Outstanding performances of the year were given by Carol Mazmanian, Dave Richardson, Annamae Rensberger, Lloyd Thomas, and Lorna Kwon. John Eby, Denny Wise, and Beverly Butterbaugh toured *Roger Williams and Mary* in various Brethren churches in Southern California.

THETA

Baker University

Baldwin, Kansas

The fall production of the Baker Players was *Our Town*, by Thornton Wilder and the spring production was *The Happiest Millionaire*, by Kyle Crichton. The head of the speech department and director of these plays was Mrs. Thelma Morreale. At our annual awards Chapel the Baker Players of the Year was awarded to Jerry Holley. Eleven members were initiated into Theta Cast: Pam Austin, G. D. Blackwood, Don Blades, Mel Chastain, Sonja Erickson, Jerry Holley, Connie James, Charlene Lewis, Betty Mikesell, Judi Plaskett, and Gordon Shewmake. Those initiated into Baker Players, a junior dramatic organization, were Gloria Barnes, Sue Gordon, Janet Irby, Gil Merritt, and Steve Schiff.



MEDEA—Directed by Prof. Lynn Murray, March, 1960 Sam Houston State College, Huntsville, Texas.



THE MALE ANIMAL—Directed by Prof. Patrick Horrigan, December, 1959 Sam Houston State College, Huntsville, Texas.

GAMMA OMEGA

Montana State University

Bozeman, Montana

Outstanding achievements of the Sock and Buskin Drama Club and the Student Union Theatre were the success of the summer theatre, the opening of a children's theatre program, staging *Alladin* and the *Wonderful Lamp*, directed by Ann Dunbar and Harvey Jung, and the staging of our first opera, *Amahl and the Night Visitors*. Also to be noted was the tour of *Streetcar Named Desire*, directed by Prof. Joseph C. Fitch. Prof. Fitch also directed *Bell, Book, and Candle*, and *The Biggest Thief in Town*. Mr. Charles M. Billings directed *Piepie, Tea and Sympathy* and *The Night Visitors*. Mr. Stephen C. Sevener directed "Bus Stop." The short plays included a program of three student-written one-acts, *The Dear Departed*, *No Exit*, *Let There Be Farce*, *The Last of My Solid Gold Watches*, by T. Williams, and *The Chairs*, by Ionesco. The plays planned for the current summer schedule are *Tom Sawyer*, *A Visit to a Small Planet*, *Lady Windermere's Fan*, and *Anastasia*. Alpha Psi Omega membership was conferred upon seven members.

KAPPA UPSILON

Eastern New Mexico University

Portales, N. M.

Eastern climaxed one of its finest seasons in history with a production of Shaw's *Saint Joan*, directed by Dr. R. Lyle Hagan, director of the University Theatre. The modified formalistic setting was designed by George W. McKinney, technical director. In addition to a series of ramps, platforms and steps, the setting featured five projections on the theatre's plaster dome cyclorama. Other major productions included *On Borrowed Time*, *The Reluctant Debutante*, and a Children's Theatre production of *The Three Bears*, which was performed nine times before more than 12,000 children in seven Eastern New Mexico cities. The workshop produced and directed Archibald MacLeish's *This Music Crept by Me Upon the Waters* and scenes from modern plays. Carolyn Cantrell was named best actress of the year, and other acting awards went to Dennis Williams, Ronnie Cox and Mary Maddox. Productions planned are *Romanoff and Juliet*, *The Rope Dancers*, *Macbeth*, and a Children's Theatre production, not yet selected.



(L. to R.) Don Howell, Norman Chandler, Luther Schulze in "Romeo and Juliet," Texas College of Arts and Industries. Dr. Albert E. Johnson, director; Keith Kennedy, technical director.

THETA EPSILON, McPherson College, McPherson, Kans. Prof. James Peter Coulson directed *The Matchmaker* and *Othello*. The plays selected for 1960-61 are *The Rainmaker* and *Hamlet*. Theta Epsilon officers are Vernard Foley, president; Karen York, secretary.



Rehearsal scene, "The Matchmaker," Mansfield College Players, Mansfield, Pa. Prof. Joseph Conaway, director. (Standing) Joseph Conaway, Gayle Matthews, Peggy Davis, Eveleine Morgan, Zane Kemler. (On floor) James McGrath and Mike McNaney.

KAPPA PHI

Texas College of Arts and Industries
Kingsville, Texas

The opening production of *Romeo and Juliet*, directed by Dr. Albert E. Johnson was attended by almost 3500 high school students from the South Texas area. This was the largest high school attendance since the annual Shakespeare production was inaugurated eight years ago. In November Professor Keith Kennedy, technical director, presented *The Glass Menagerie* to christen the new little theatre, seating 244, in our new Speech Building. The Footlights Club in December offered its traditional performance of *The Second Shepherd's Play*, directed by Dr. Johnson. *The King of the Golden River*, our annual childrens' play, was directed by Miss Jean Taylor, and attended by some 2,000 local school children. In March, Dr. Johnson directed J. M. Barrie's *Dear Brutus*, and early in May the speech faculty and students gave a concert reading of *The Importance of Being Earnest*. At the Fifth Annual Awards Banquet, the following were awarded "Alberts": Best Actresses, Barbara Biddison and Barbara Petry; Best Actors, Don Howell and Gaymon Thompson; Best Crew Member, Walter Smith; Outstanding Service, Manford Barber.

GAMMA ALPHA

Southeastern State College Durant, Okla.

Members of Gamma Alpha were on hand to represent Alpha Psi Omega at the formal opening of the Dallas Theatre Center, December 28, 1959. This celebrated theatre is directed by Paul Baker and was designed by Frank Lloyd Wright. Jesse Stuart completed his production, *The Thread That Runs So True*, in time to be used as part of the Golden Anniversary Celebration of Southeastern State College. Prof. Vivian Downs directed *The Accusers*, by Kilcullen, *Kind Sir*, by Krasna, and *On the Third Day*, by Belford Forrest. Cast officers are Teloa Holder and Raymond Pillar.

PI MU

Brooklyn College Brooklyn, N. Y.

Prof. Catherine Myers opened the 1959-60 season at Brooklyn College with *Glass Menagerie*, followed by Prof. Joseph Davidson's production of *Saint Joan*. Prof. William E. Hatch designed the sets for Prof. Wilson Lehr's *The Critic*. Dr. Bernard Barrow and Prof. Eldon Elder staged *The Tiger at the Gates*, and Prof. Wilson Lehr directed the Rodgers and Hart musical, *Pal Joey*. The School of General Studies presented *Dial M for Murder*, and the experimental drama group, *The Masquers*, staged several original scripts, an original review, and *Waiting for Godot*. This year's winners of the Elizabeth P. Casey award were Alan Hauser and Mona Fink Berner. Brooklyn College has been selected by AETA to tour a play to foreign countries during the summer of 1961.

MU DELTA, New Mexico State University, University Park, N. M. The Coronado Playmakers staged four major productions in the 1959-60 season. *Inherit the Wind*, *Diary of Ann Frank*, *Midsummer Night's Dream*, and Eugene O'Neill's *Touch of a Poet*. Twenty Playmakers received Alpha Psi Omega membership, and special acting and technical awards were given to Rock Campbell, Amy Shook, and Carl Price. Cast officers were Lyndell Mitchell and Karen Gardner.

KAPPA MU

Oregon College of Education Monmouth, Ore.

Three major productions were presented during the 1959-60 season by the Drama Department. The first and third, *Summer and Smoke* and *The Taming of the Shrew*, were directed by Prof. Alan Robb. These excellent productions were both very well received. The first musical ever to be presented at O.C.E., *The Pirates of Penzance*, was produced in cooperation with the Music Department. Prof. George Harding, Head of the Drama Division, acted as Director-in-Chief while Dr. Smith, Head of the Music Department, supervised the direction of the musical portion of the show, assisted by Profs. Hutchinson and Reddin. The annual dramatic award winners were: Robert Gates, Arlie Holt, Sandra Ritter, David McMurray, Launa Drummond, and outstanding staff members, Robin Beach and Margaret Thompson.

ALPHA

Fairmont State College Fairmont, W. Va.

The season for The Masquers was opened with the fantasy, *Visit to a Small Planet*, directed by Prof. L. A. Wallman, Joann Lough directed the musical, *Boy Friend*, and Ah, Wilderness. Bradley Smoker directed *Inherit the Wind*. Prof. Smoker did beautiful sets and provided the technical direction for all four shows. Miss Lough took the first steps toward a Fairmont summer theatre with the staging of *The Reluctant Debutante* which was so enthusiastically received that four productions may be attempted next year.

MU TAU

Central Washington College Ellensburg, Wash.

The three major plays of our college theatre were *The Diary of Ann Frank*, and *Finian's Rainbow*, directed by Prof. Milo B. Smith and *The Torchbearers*, directed by Dr. Lyman Partridge. The children's play, *The Snow Queen* and *The Goblin*, was presented in Yakima, Wash., for Yakima Junior Programs and here in Ellensburg, sponsored by the American Association of University Women. The receipts from the five showings will finance four drama scholarships next year. The students awarded these scholarships are Marilyn Peterson, Jack E. Smith, Richard Davis and Concie Dallman. Our production of *Finian's Rainbow* was a joint effort with the music and dance departments. Four shows were played to 4,000 patrons. One hundred twenty students were in the cast and crew.

NU UPSILON

Nebraska State College Kearney, Nebr.

The 1959-60 season was one of the most successful seasons in recent years for the College Theatre under the direction of Wesley J. Jensby. The musical production was Jerome Kern's *Show Boat*. Mr. William Lynn of the music department collaborated with Mr. Jensby for this fine production. Other plays presented last season were *The Diary of Anne Frank*, *Teahouse of the August Moon*, and Tennessee Williams' *Summer and Smoke*. The musical played to sell-out audiences each night of its four-night run, and hold over performances were given. Among the productions planned for next year are *South Pacific* and *Death of a Salesman*. Nineteen members were initiated into Alpha Psi Omega this year. The organization plans play reading sessions and an original one-act play-writing contest for next season.



(L. to R.) Karen Gannit, Dollie Gilliam, Joe Mendez, Nancy Wesley in "Dear Brutus," Texas College of Arts & Industries. Dr. Albert E. Johnson, director; Keith Kennedy, technical director.

KAPPA MU, Eastern Oregon College, Monmouth, Oregon. The Sock and Buskin Club staged *The Solid Gold Cadillac*, *Glass Menagerie*, and the children's musical *O'd King Cole*, directed by Prof. Richard Hiatt. Prof. Hiatt and Neil Wilson directed *The Medium*. Student-directed one-act plays were *Sunday Costs Five Pesos*, *Good Night Caroline*, and *Fumed Oak*. We sponsored a showing of the Bishop's Players production of *The Devil and Dan'l Webster*.



Scene from Theatre Omnibus, Mansfield College Players. (L. to R.) Bonny Lugg, Tim McMullene and Marilyn Montgomery; directed by Joseph Conaway.

IOTA

Johns Hopkins University

Baltimore 18, Maryland

The Barnstormers of the Johns Hopkins University opened the year with **Three Men on a Horse**, by John Cecil Holm and George Abbott. This production featured freshman talent and was student directed. Major productions of the year were **The Rainmaker**, by N. Richard Nash and **My Three Angels**, by Sam and Bella Spewack. A one-act play, **Box and Cox**, was presented for the alumni and a reading of **No Exit** was so successful that more readings will be tried in the future. Lester Wolf directed the major productions and all others were under student direction. Dr. William McClain was re-elected faculty advisor. The annual awards were presented to the best actor and technician and six persons were awarded membership in the Iota Cast. Charles Davis was elected president; Chip Lickson, vice president, and Fred Teets, business manager.

ALPHA OMEGA

Augustana College

Rock Island, Illinois

Our Town, presented in new Centennial Hall was an ideal play to give as part of the Centennial Arts Festival that made Augustana's Centennial Year a little more special. We gave an original Christmas play, **Woodland Christmas**, five times in grade schools of the area. Three one-act plays were presented by acting and directing classes as a One-Act Play Festival in January. **The Importance of Being Earnest** was presented in May. A group of drama students from the State University of Iowa gave a reading of an unpublished play, **The Blind Mouth**, by Richard Power. An interesting discussion followed. At the final initiation service gold keys were awarded and slides were shown of the touring play of last summer. Prof. Don Tornquist is director of the College Theatre, and the cast officers were Karen Looze, Arlene Johnson, Cynthia Roseman, and Jim Storms.



Douglas Yates and Sue Pennington in a scene from "All My Sons," Dr. Rosemary Owens, director, East Texas State College, Commerce, Texas.

DELTA NU

Florida Southern College

Lakeland, Florida

The Vagabonds, drama association of Florida Southern College, directed by Vivian Fasillo, produced Richard III, Our Town, and Thieves Carnival. Staging Shakespeare in-the-round was very exciting and effective. Arranging battle scenes with twenty soldiers on stage at once was successfully accomplished. Delia Bird was chapter president of Alpha Psi Omega; Don Vandenburg was secretary.

MU BETA

Emory University

Atlanta 22, Ga.

The Emory Players under the direction of Mr. Kenneth Barry staged *The Young and the Beautiful*, by G. B. Shaw, *The Great God Brown*, by Eugene O'Neill, and *Loves' Labours Lost*, by Shakespeare. Mu Beta Cast officers are Bill Bracewell, president; Dorothy Veach, secretary.

PI GAMMA

McNeese State College

Lake Charles, La.

The Bayou Players opened the season with *Twelfth Night*, *Annie Get Your Gun* and Gounod's *Faust*, represented the combined efforts of the Music and Speech division of Fine Arts, and were directed by Betty Hinton. Pirandello's *Six Characters in Search of an Author*, was directed by Margery Wilson with Betty Hinton, technical director. Two original plays were directed by Walter Farque and Coralie Guidry. Marilyn Penn directed *Aria Da Capo*. Ionesco's *The Lesson*, was presented during the summer session.

KAPPA OMEGA

Wayland Baptist College

Plainview, Texas

The major plays, directed by Prof. John Lee Welton, were *Dear Brutus* and *The Glass Menagerie*. Three student-directed one-acts were *The Dear Departed*, *The Maker of Dreams*, and *He Done Her Wrong*. The presentation of *God's Trombones* with the assistance of the Wayland International Choir was such a great success that we toured it to five different towns. Cast officers were Bill Barnes and Leon Blevins.

PI ZETA

Washington College

Chestertown, Maryland

Director of the Washington Players is Miss E. Winifred Opprande. During the season of 1959-60 *Twelfth Night* and *The Boy Friend* were the major plays. The presentation of the latter, a musical, was an innovation. Harold Frischman was cast president.

BETA PI

William Jewell College

Liberty, Missouri

The plays produced during the season ran the gamut from farce to classical tragedy: *Charley's Aunt*, *A Doll's House*, *Twelve Angry Men*, *Antigone*, and *Sabrina Fair*. Mrs. Gloria Lane directed *Sabrina Fair*, so that Mrs. Virginia D. Rice, director of the college theatre, could make preparations for an extended tour of Europe this summer. Stanley Lemons, Kermit Wilkins, and Mary Worthington received the Austin Cooper Edwards Memorial Award in acting, and Henry Lines received a scholarship this summer with the Huron Theatre in Ohio.



"Six Characters in Search of an Author," by Pirandello. (L. to R.) Don Land, holding Mary Ellen Bracato; Carolyn Tomlinson, Annette Pousson, and Roy Harmon, holding John Harmon. Director, Margery Wilson; technical director Betty Hinton, McNeese State College, Lake Charles, La.



Layne Stone and Ray Beasley in "Twelfth Night," presented by the Bayou Players of McNeese State College, directed by Mrs. Margery Wilson; Miss Betty Hinton, technical director.



(L. to R.) Peter Klabo, Paula Jacobs, and James Martin in "Hedda Gabler" by Ibsen, directed by Prof. Joseph C. Svec, Minot State College, North Dakota.

DELTA THETA

Minot State College

Minot, North Dakota

Campus Players conducted a smoothly organized program for the theatre season of 1959-60 with an open house in September; then at regular intervals came four major shows directed by Prof. Joseph G. Svec: *Our Town*, *Dirty Work at the Crossroads*, *Hedda Gabler*, *Teahouse of the August Moon*, and *The Silver Cord*. A musical will be included in the current season and three regular productions: *The Madwoman of Chaillot*, *Antigone*, and *Teach Me How to Cry*.

ALPHA PI

Millsaps College

Jackson 10, Mississippi

Prof. Lance Goss, director of The Millsaps Players directed *Life With Father*, *Picnic*, *Bells Are Ringing*, and *Androcles and the Lion*. Nine members were recognized by Alpha Psi Omega. Cast president was Ruth Tomlinson; secretary, Sandy Aldridge.

BETA

Marshall College

Huntington, West Virginia

The Marshall College Theatre, directed by Prof. Clayton Page, presented three major plays. Mr. Page directed *Visit to a Small Planet* and *The Heiress*. Mr. William Kers directed *The Girl in 509*. Separate Tables has been selected for the first play of the 1960 season. Beta chapter officers were president, Miss Nancy Jett; secretary, Betsy Rucker.

ZETA ETA

University of Pittsburgh

Pittsburgh 13, Pennsylvania

The Pitt Players enjoyed an outstanding season, staging two musicals and two major productions under the able direction of Prof. Michael J. McHale. *Teach Me How to Cry* and *My Three Angels* were the stage shows. Al Wagner was the technical director for the feature musical, *The Pajama Game*. Prof. McHale also directed the medieval musical, *Robin and Marion*; The Players sponsored the Arnold Moss Touring Co. in Shakespeare's "The Tempest." The Alpha Psi Omega annual awards were given to Eva La Gallienne and Mr. Arnold Moss. Alpha Psi Omega membership was conferred upon twelve members. Cast officers were Steve Gordon, Bette L. Gratz and Paula Brunsak.

THETA SIGMA

Missouri Valley College

Marshall, Missouri

The Valley Players, directed by Prof. Jerald A. Cunningham, staged *See How They Run*, *Amahl and the Night Visitors*, *The Heiress*, and a program consisting of *Trial by Jury* and *The Jewel Merchants*. The Fall Festival of One-Act Plays consisted of *Overtones*, *The More the Merrier*, and *Still Alarm*, by Kaufman. The spring festival of one-acts were: *Before Breakfast*, directed by Karen Mott; *The Valiant*, directed by Shirley Dallwitz; *The Sheriff*, directed by Tom Bishop, and *Here We Are*, directed by Bill Lubensky. Three one-act plays were given at the State School for the Handicapped in May. Cast officers are Shirleyann Dallwitz and Bruce Henry.



Top - Brian McCullough, Carl House, Kenneth Cox, Steven Kardaleff, Robert Douglas Hume, Ricky McCullough and Jo Lovins in "Mrs. McThing," Lindenwood College, St. Charles, Mo. Keith Edward Hammel, director.
Below - "East Lynne" was presented as part of the celebration of the seventy fifth anniversary of Oakland City College, Margaret Earl McConnel director.



Anna Stone, Walter R. Martin as "George Dillon," Stanley Pratt, and Tom Hinks, in the Hillsdale College production of John Osborne's "Epitaph For George Dillon." Professor George Hale, director.

BETA EPSILON

Douglas College of Rutgers

New Brunswick, N. J.

The first major production, *Allegro*, by Rogers and Hammerstein was directed by Dr. Annetta L. Wood. Mr. Erik Walz directed *The Cave Dwellers* and *Murder in the Cathedral*, and Mr. Christian Hamilton directed *Tiger at the Gates*. As a short play Mr. Irwin Jaffe directed a scene from Shaw, and Thomas Vaga directed *Death Watch*. For the current season of 1960-61, Dr. Wood will direct *Death of a Salesman*, Nancy Swortzell will direct *Sabrina Fair* and Erik Waltz will stage *She Stoops to Conquer*. Barbara Caruso and Robert Walsh were selected to attend the Royal Academy for the next two years. Thirteen were admitted to Alpha Psi Omega, and cast officers are Xenia Koulomzin, president, and Ruth Kandler, secretary.

LAMBDA RHIO

Central State College

Edmond, Oklahoma

The college theatre, Prof. Lee Roy Hicks, director, produced the musical, *Guys and Dolls*, *The Matchmaker*, *Detective Story* and *King Lear*. Cast officers for 1950-60 were Verna Wright, president; John Stork, secretary.

BETA OMEGA

Keuka College

Keuka Park, New York

Prof. William Hammack directed two long plays during the season of 1959-60: *Oedipus Rex* and *The Rivals* and three short plays written by alumnae: *Places Please*, *Lavender*, and *Pete*. Beta Omega Cast officers were Gayle Foster, Wilma Brewer and Lucy Barnard.

DELTA PSI CAST

Mississippi State College for Women Columbus, Miss.

The opening production of the year was *You Can't Take It With You*, presented in November. The remainder of the year was given over to an original pageant commemorating the seventy-fifth anniversary of our college. The pageant, entitled *Across the Years*, used about sixty-five in the cast, and about forty back-stage crew. About twenty-five of the cast were faculty. All productions were under the direction of Miss Frances M. Bailey. Seven new members were taken into our group and at the banquet, special awards were given: best actress, Marilyn Norris; best supporting actress, Kay Watt; best male major role, Marjorie Hess; best supporting male role, Julia Platt; outstanding stage manager, Yatesy Davis, and most cooperative person on stage, Marjorie Hess. Next year the college theatre will be directed by Miss Caye Caywood.

ALPHA CHI

Shepherd College

Shepherdstown, W. Va.

The Alpha Psi Omega staged three productions this past school year. We started the season with *The Little Foxes*, by Lillian Hellman; in March the Music and Drama Departments presented the musical comedy *Plain and Fancy*, by Stein and Glickman. We closed our season with the Greek tragedy *Antigone*, by Sophocles. All three productions were directed by Dr. Vera Ellen Malton. The productions were designed and staged by Mr. Donald Loughrie, the technical director. The president, Dorothy Katherine Poisal, of the Alpha Chi cast was presented the award as the outstanding student in Drama for the year 1959-1960. For 1960-61 the following officers were elected: Thomas Sine, president; Gaylord Dillow, vice-president; secretary-treasurer, Dorothy Poisal; Dale Hicks, senator.



THE MOUSE TRAP, Agatha Christie, directed by Prof. Eugene J. Blackman, Charles Devlin, technical director. Northeastern University.



Scene from "The Bat," Stout State College, Menomonie, Wisconsin; Lora S. Lengfeld, director.



Bill Cole, Marie Braden, and Ron Springfield in "Taming of the Shrew," directed by Dr. Dorothy I. Summers, East Central State College.

BETA ZETA

East Central State College

Ada, Oklahoma

Dr. Dorothy I. Summers directed *Taming of the Shrew*, *Joan of Lorraine*, and *The Night of January 16th*. Nancy Lansford and Lola Cunningham directed *The Pot Boiler*, Billye Parks directed *Bury the Dead*, and Ron Springfield directed a cutting of a modern play. Trophies were awarded to Marie Braden as best actress, Bill Cole as best actor, and Fran Jones as best technician. Thirteen members were awarded Alpha Psi Omega membership. Cast officers were Bill Cole and Ellen Hall.

ETA OMICRON

Carthage College

Carthage, Illinois

The 1959-60 season included *All My Sons*, *A Midsummer Night's Dream*, *The Pajama Game*, and Eugene Ionesco's *The Chairs*, and *Victims of Duty*. The season was a huge success. Prof. T. Shandy Holland, Jr., and Prof. George Bedard were the faculty directors. Joan Skow, Jim Reinard and Liz Hosford directed the following one-act plays: *Bury the Dead*, *The Old Lady Shows Her Medals*, and Mr. F. Miss Barbara Jerde received the Alpha Psi Omega senior award, and other awards given at the annual banquet went to Ed McCann, Barbara Jerde, Marcia Sebein, and Fred Bess. Eight new members were initiated. Cast officers are Gene Freeman, Jan Mason, and Joan Skow.

THETA ALPHA

Glenville State College

Glenville, West Virginia

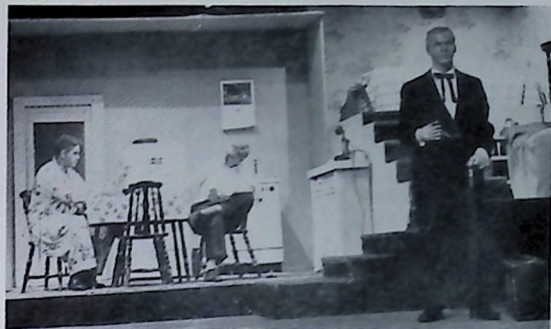
The major plays at Glenville State College were *Monique*, *A Physician in Spite of Himself*, and *Glass Menagerie*, with Barbara Whiting as guest star. The use of stereo sound in the first play was an interesting innovation. Faculty director, Prof. William Coleman contributed two original scripts, *A Ballad for John and Montage*. Other one-act plays were *Something Unspoken*, *Sorry*, *Wrong Number*, *Quare Medicine*, and *Last of the Lowries*. Cast officers were Robert Gainer and Patricia Hornor. Plays selected for next year are *The Country Girl* and *The Making of Moo*, by Nigel Dennis.

ALPHA SIGMA

Louisiana College

Pineville, Louisiana

Louisiana College opened its fall dramatic season with the presentation of *The Diary of Anne Frank*, directed by Professor Frank David Bennett. Various effects were brought about by different stage levels and impressive lighting. Four new members were initiated into Alpha Psi Omega and the officers were Emma Jean Tollett, James Hall, and Dudley Lehew.



Scene from "Death of a Salesman," Wisc. State College, Priscilla Bussan, director.

ETA ZETA

Upsala College

East Orange, New Jersey

Awards for dramatic achievement for the past season went to Miss Sandy Herschli, Barry Weisler, John Lollos, Miss Pat Grant, Edward Hardwick, and Paula Malone, and eight were initiated into Eta Zeta Cast. Prof. Earl Dossey directed Shakespeare's *Measure for Measure*, *The Penthouse*, and a program of three one-act plays: *Helena's Husband*, *Aria da Capo*, and Pirandello's *The Vise*. Eta Zeta officers were president, Robert Gyle, and secretary, Sylvia Child.



"When Shakespeare's Ladies Meet," Dr. Wallace Goldstein, director, Westfield, Conn. Mass.

PI PSI

Westfield State College

Westfield, Mass.

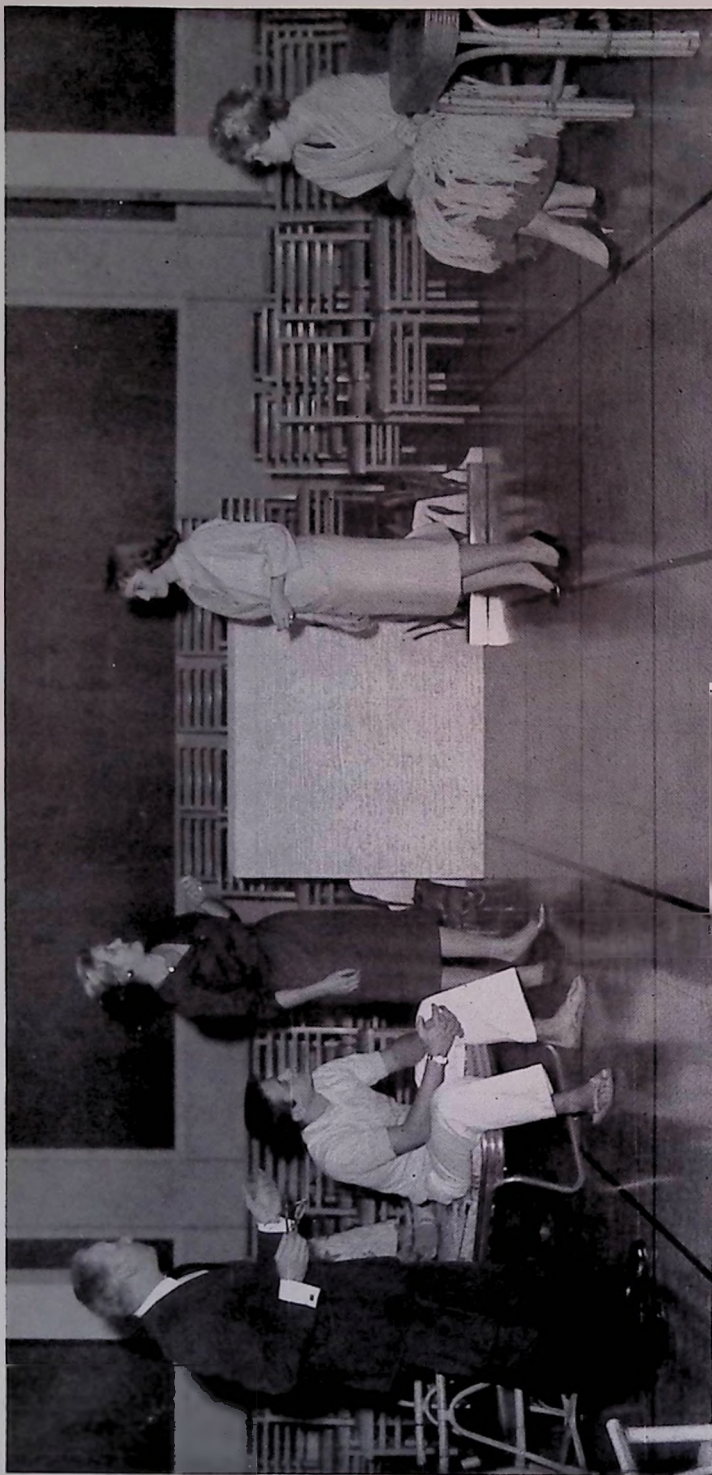
The Footlighters of Westfield State College presented *Father of the Bride*, and the following one-act plays during the year: *Director's Nightmare*, *When Shakespeare's Ladies Meet*, *Mooncalf Muford*, and a reading of *Stuffed Owls*. Special awards were presented to Justine Kelleher and Jean Richardson for their outstanding contributions in dramatics and to Mary Pothier and Francis LaMontagne for outstanding work in stage management. Plays were directed by Dr. Wallace L. Goldstein, assisted by Miss Alice Barton. Arno Maris was in charge of stage work.

ETA NU

Meredith College

Raleigh, North Carolina

The Meredith College Playhouse presented *Midsummer Night's Dream*, directed by Betty Gorsage, and a theatre reading of *Hedda Gabler* during the past season. Eta Nu officers were Zelma Green and Suzanne Sault.



Robert Douglas Hume, Keith Edwards, Hammel, Pat Payne, Jo Lovins, and Betty Darnall in "Sabrina Fair," Lindenwood College, St. Charles, Mo. directed by Robert Douglas Hume.



Johnny Taylor (black, front) and Walter Lynn (center, White Hat) were the Principals in Texas Wesleyan's Opera Workshop Production of "The Jumping Frog of Calaveras County," directed Howard Skinner, staged by Mason Johnson.

BETA MU

Union University Jackson, Tennessee

Union University Players under the direction of Elizabeth B. Loyd scored tremendous success with SRO, two night runs of *Cricket on the Hearth*, and *The Big Fisherman*. Beta Mu cast also staged an evening of one-acts which included: *The Valiant*, *The Opening of a Door*, John Turner Davis, and *Boy Meets Family*.

THETA MU

University of Minnesota Duluth, Minnesota

The University Theatre of Duluth Branch staged a season of five major productions during 1959-60. Prof. Harold Hayes directed *Carousel* arena style, *Caesar* and *Cleopatra*, and *Uncle Vanya*. David Erickson served as student director with Prof. Hayes in staging *Juno and the Paycock*. Prof. Fred Meitzer directed *The Madwoman of Chaillot*. Mr. Hayes' production of *Carousel* was the biggest highlight of the season and was a financial, artistic, and theatrical success. A musical version of *Lysistrata* called *The Happy Idea*, adapted by Raymond Hursh with words and music by Dick Amos and Allen Spilton will be given in July at the Duluth Community Playhouse. This will be the second summer theatre sponsored by the Cast of Alpha Psi Omega. At the annual awards banquet, acting awards went to David Erickson, Cornelia Dacy, Loretta Loose, and Gerald Nyquist.

NU CHI

Northeastern University Boston, Massachusetts

The Silver Masque staged three major shows: *Teahouse of the August Moon*, *Tea and Sympathy*, and *The Mousetrap*. The fourth play was a musical, *Fanny*, by S. N. Behrman and Joshua Logan. Joshua Logan was a guest of Silver Masque speaking on the theatre in general, and he also spoke about the play with which he was in Boston, *There Was a Little Girl*. Prof. Eugene J. Blackman was director in charge of all productions; Mr. Charles M. Devlin, technical director. Eight members were admitted to Alpha Psi Omega. Chapter officers were Tom McKee, Richard Blue, and Noralie Barnett. Plays selected for the current season of 1960-61 are *Life With Father*, *Anastasia*, *Picnic*, and *South Pacific*. Members of Nu Chi Cast led by Prof. Eugene Blackman installed the newly formed Chapter of Alpha Psi Omega at Emmanuel College.

LAMBDA XI

Ft. Hays Kans. State College Hays, Kansas

The major plays of the 1959-60 season at Ft. Hays Kansas State College were *The Country Girl*, *The Sea Gull*, and *Ah, Wilderness*. Oscar awards in the form of play anthologies were presented to Rex Mahan, Jerry Harrington, Martha Dirks, William Inman, Judy Braswell, Bill Ohlemeier, Sharon Utz, and Lynn Wickizer. The fol-

lowing earned sufficient points for Alpha Psi Omega membership: Judy Braswell, Clarann Weis, Lori Socha, and Myrna Domingo. New cast officers are Glenda Morris, president; Gay Paustian, secretary. Dr. Geneva Herndon is faculty advisor.

THETA OMICRON

Texas Wesleyan College Ft. Worth, Texas

The Texas Wesleyan Players presented two major productions this year: Graham Greene's *The Potting Shed* in the fall and Arthur Miller's *The Crucible* in the spring. Both productions were under the capable direction of Mr. Mason Johnson. A series of experimental dramas were given in our Arena Theatre under the direction of advanced theatre students. Cole Porter's *Kiss Me Kate* was our sixth annual musical production, directed by Prof. Johnson who was assisted by Dr. D. W. Bellah of the Fine Arts division. The Alice M. Beckett award for the best student actress and the Boaz award for the best student actor went to Miss Sharon Brown and Mr. Stanley Crow, respectively. The TW Players awards went to Bob Cash, Jan Wever, John Robinson, and Sarah Bussey.

KAPPA CHI

Lewis and Clark College Portland, Oregon

This year the Fir-Acres Theatre, Dr. Clifford Hamar, director, presented *Doctor in Spite of Himself*, *Uncle Vanya* and *Bell, Book and Candle*. A student-directed bill of one-act plays consisted of *The Ugly Duckling*, *Lightning and Thunder*, a Mark Twain story adapted to the stage by George Bieber, and *On Baile's Strand*, a poetic play by Yeats. Alpha Psi Omega sponsored Philip Hanson of the Ashland Shakespeare Theatre in a program called *Kings and Clowns*. Cast officers of 1959-60 were Karen Wiseup, Tom Speros, Charles Mansfield, and Sangwan Zimmerman.

DELTA ZETA

University of DuBuque DuBuque, Iowa

The fall production was a double bill consisting of two one-act farces: *The Marriage Proposal*, by Tchekov, and *Pierre Patelin*. The mid-season production, done in co-operation with the Music Department, was two one-act operas: *The Telephone* and *Down in the Valley*. The Miser, a five-act play by Moliere, constituted the spring production. The Delta Zeta cast also presented two short plays by Bertold Brecht, *He Who Says Yea* and *He Who Says No* in Chapel. All the year's productions were directed by Dr. Donald Savage; musical direction of the operas was furnished by Professor Kenneth Nielsen of the Music Department. The best acting award was won by Michael Weatherbee and the general theatre award was given to Janice Tindall. Cast officers were Eldon Benedict, Charles Wagner, Donna Jones, and Douglas Hickerson.

MU RHO

Rhode Island College of Education Providence, R. I.

A production of *Madwoman of Chaillet* with music is the first show for the new season at Rhode Island College of Education. We have great expectations for this version. Prof. Joseph Graham directed *The Crucible* last season and a series of experimentally handled workshop plays with student directors, Michael Iacona and Edward Rondeau. The Alpha Psi Omega awards outstanding contribution to the College Theatre went to Gerald L. Schooley, Edward F. Kelly, and Judith Brown. Cast secretary was Ann Schattell.

ZETA TAU

Texas Western College

El Paso, Texas

Texas Western College announces the formation of a new department of theatre and drama. Prof. Milton Leech is director of the College Theatre, and this past season he staged *The Remarkable Mr. Pennypacker* and *Marco Polo*. J. Henry Tucker directed *The Grass Harp*, and Prof. Frank R. Harland directed *Salt for My Partner* and *Boy Friend*. Jeanne Massey directed *The Children's Hour*, and Richard Clark staged *Farcy Meeting You Again*. Mr. Tucker then staged the eighth long play of the season, *Summer and Smoke*. The Texas Western College Press will publish the Will Greene play, *Salt for My Partner*, with designs by Carol Hertzog. Zeta Tau Cast president was Sylvia Summers, and Suzanne Payne, secretary. Eight members were admitted to Alpha Psi Omega.

NU XI

St. Mary's Dominican College

New Orleans, La.

Under the superior direction of Sister Mary Joanna, Ph. D. The Dominican College Players observed the Golden Jubilee of the college by staging a season of outstanding performances. Shakespeare's *Heroines* was an original presentation of Shakespearean solo dramas. The first major production was *The Diary of Anne Frank*, presented in the fall. *Medea* was successfully staged in the spring, and was hailed by the critics as the "finest presentation of a Greek tragedy by an amateur group." A Gold Tea and a Mardi Gras masked ball were held in honor of the golden jubilee. Dramatic awards for outstanding achievement were presented at the college honor assembly. Sister Mary Joanna, O.P., Ph.D., is the director of the Dominican College Players.

MU KAPPA

Sacramento State College

Sacramento, Calif.

The staging of *Romeo and Juliet* with a unit set of platforms, ramps and sweeping arches combined with an 8-foot revolving unit topped by a 20-foot arch was the biggest success of the season. All attendance and box office records were broken. The annual musical was *Guys and Dolls*, directed by Dr. Gerard Larson. Dr. Carl Thomas directed *Desire Under the Elms* and *The Rainmaker*. Five student-directed one-act plays and four one-act operas were also presented. Seventeen high schools attended our annual drama festival. At our annual awards banquet the following received acting awards: Dave Clegg, London Green, Vern Coleman, Austin Nelson, Evon Ray, Liz Dokimos, Maggie Adair, and Elaine Blanchard. The following were given Technical awards: Sandy Fowler, Judy Trainer, Connie Rosensteel, Peggy Scherman, Fred Garner, Jim Hawkins, Dave Clegg, and Mack Bridges. Outstanding student award was given to Peggy Ann Scherman. Cast officers were Charles Walker and Patricia Geyer.

THETA KAPPA

San Francisco State College

San Francisco 27, Calif.

The Theatre Arts season of San Francisco State College included *Misalliance*, by Geo. Bernard Shaw, directed by Jack Cook, *The Enemy of the People*, directed by Jules Irving, *Kiss Me Kate* (musical), *Murder in the Cathedral*, *A Tale of Two Cities* (opera), and *Time Remembered*. The Players Club presented three performances of *The Imaginary Invalid*, directed by Geoffrey Lardner. The Children's Theatre production was *The Clown Who Ran Away*, directed by Dale Mackley.

THETA GAMMA

La Grange College

La Grange, Georgia

Our first major play, *Visit to a Small Planet*, was staged in arena style, directed by a senior, Charles Jones. *The Fool* was chosen as our annual religious drama; our director, Miss Irene Arnett directed *The Diary of Ann Frank* and *Anastasia*. A reading of *Saint Joan* was presented for our Fine Arts Festival, and the nineteen member cast traveled for another presentation in Douglas, Georgia. Prof. Burnet M. Hobgood of AETA was the guest speaker for our first initiation banquet. Summer theatre jobs were obtained by Mary Ann Wages at the Barter Theatre and by Charles Jones with the Stephen Foster Story at Bardstown, Kentucky. Larry Thomas will do technical work with the Carolina Playmakers, and Gail Woodruff will be at the Pioneer Playhouse.

ALPHA LAMBDA, Wisconsin State College

Superior, Wisc. Prof. Pacey Beers directed *Much Ado About Nothing* and Priscilla Bussan directed *Death of a Salesman*. *Look Homeward Angel* has been selected for the fall season of 1960. Acting awards were presented to Arlene Tobias and Robert Berg, and service awards went to Richard Treadway, Vernon Hollister, and Henry Clement. Secretary of the Alpha Lambda Cast was Marjorie Ralsch.

TAU, Texas Technological College, Lub-

bock, Tex. The Texas Tech. Theatre is enlarging its facilities for its theatre workshop which will house new costume and make-up rooms, scene shop, office, and a Green Room. Prof. Ronald Schulz, director, staged *Blood Wedding*, *Picnic*, and *A View from the Bridge*. Shirley M. Cadle directed *The Imaginary Invalid*. Cast officers were William Leonard, president; Jo Fields, secretary.



Bonnie Field and Rod Rosenbury in "Kind Lady," Margaret Earl McConnell, director, Oakland Cy. College, Indiana.

PSI

Lindenwood College

St. Charles, Mo.

Four major productions were staged at Lindenwood in 1959-60. Robert Douglas Hume directed the arena style production of *Sabrina Fair*. Mrs. McThing, directed by Keith Hammel, and *Death Takes a Holiday*, directed by Anne Bloebaum, were the proscenium presentations. Also in-the-round was *Letters to Lucerne*, directed by Marilyn Wilson, who also presented selections from W. H. Auden's *For the Time Being* as an interpretation project. Psi Cast initiated six members. Keith Hammel is president; Pat Payne, vice president; Kenneth Cox, secretary, and Steven Karda-leff, treasurer.

MU PHI

Southern State College

Magnolia, Ark.

During the 1959-60 season, the Stagecrafters presented *Witness for the Prosecution*, *The Solid Gold Cadillac*, *A Phoenix Too Frequent*, *Leaping Dogs and Taxi*, directed by Margaret Harton. Awards for the year went to best actor, Bill Wells; best actress, Margaret Cooper; best supporting actor, Hamp Dickens; best supporting actress, Linda Houck; Mr. Stagecrafter, John Mook; Miss Stagecrafter, Ann Oliver. New officers for the coming year are Bill Wells, Baker Joe Jameson, Ann Oliver, and John Mook.

BETA PSI

Kent State University

Kent, Ohio

The Kent State University Theatre carried out its usual extensive schedule of productions, staging *What Price Glory*, *All My Sons*, *Summer and Smoke*, and *The Cave Dwellers*. Beta Psi Cast sponsored a variety show and a theatre trip to Cleveland to attend *West Side Story*. Prof. William Zucchero will rejoin the theatre staff for the current season. The fall quarter dinner was held at the home of faculty advisor, Prof. Earle E. Curtis and the annual banquet was held June 2nd, at Green Trees Inn.

LAMBDA DELTA, Morris Harvey College, Charleston, W. Va. The major productions of Blackfriars were *Blithe Spirit* and *The Bat*, directed by Miss Virginia Pomroy. One-act plays were *Mansions* and *The Twelve Pound Look*. Acting and technical awards were given to Clara Finch, Till Curry, and Ruth Legg.

LAMBDA LAMBDA, Arkansas State College, State College, Ark. The major productions of the Arrowhead Players were *Noah and Night Must Fall*, directed by Prof. E. R. Day, who was given a plaque for his contributions to the college theatre. Student drama awards were received by Sharon Harrelson, John Barton, Brenda Dickson, Larry McAdams, Jean Harley, and Joyce Gorham. Eight members were admitted to Alpha Psi Omega.



Ronnie McManus and Dancers in "Kiss Me Kate," (L. to R.) Liz Tocher, Sharon Lemons, Pat Brown, Mary Stevens, (seated) Hesta Wendell, staged by Mason Johnson, Texas Wesleyan College.

DELTA OMICRON, Doane College, Crete, Nebr. The major plays staged by the Doane Players were *Krasna's Who Was That Lady I Saw You With*, the old German drama *Ignomar* and *King Lear*, directed by Virginia H. Floyd.

ETA BETA, Carson-Newman College, Jefferson City, Tenn. Miss Sylvia Hall directed the 1959-60 productions: *St. Joan*, *The Happiest Millionaire*, and *The House of Bernarda Alba*. Cast president is James Kayler; secretary, Paul Medling.

DELTA UPSILON, Texas Christian Univ., Fort Worth, Tex. Dr. Walther Volbach announces the 1960-61 season. Dept. of Theatre: *The Dark at the Top of the Stairs*, William Inge; *The Three Sisters*, Chekov; *Jezebel's Husband*, Nathan; *The Mistress of the Inn*, Goldoni.



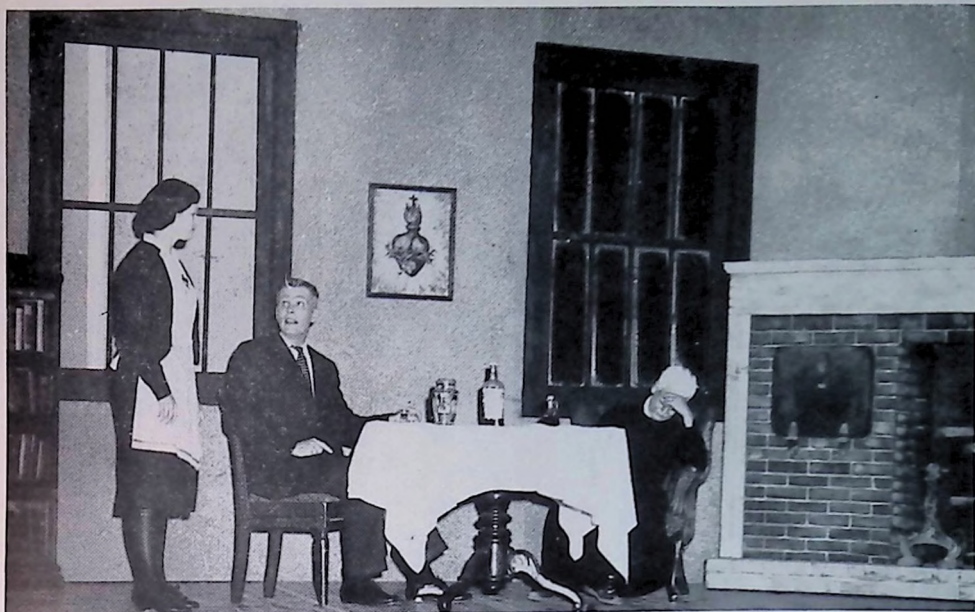
A scene from "Finnegan's Rainbow," Southwest Missouri State College, Springfield, Mo. Directed by Dr. Leslie Irene Cogar. Set by Byrne Blackwood.



Scene from "Kismet," directed by Prof. Charles A. Schmidt Sam Houston State College, Huntsville, Texas.

LAMBDA GAMMA, Middle Tennessee State College, Murfreesboro, Tennessee. Dorethe Tucker, director of Buchanan Players, staged *Ladies in Retirement*, and *Light Up the Sky*. An evening of one acts included *Trifles*, *The Happy Journey*, and *The Lottery*. *Samson and Delilah* was produced in collaboration with the Varsity Choir. Alpha Psi Omega membership was conferred on twelve members. Acting award of the year went to Sara Jane Croft. Production award went to Beverly Sadler. Cast president, Beverly Sadler; cast secretary, Bruce Hancock.

PI IOTA, Southern Ore. College, Ashland, Ore. Dr. Dorothy Stolp directed the children's play, *Sleeping Beauty*, Shaw's *Arms* and the Man and Spewack's *Boy Meets Girl*. *The Maker of Dreams* was presented during the orientation week for freshmen. Acting awards for the 1959-60 season went to Peter Lungreen, Ellis Vance and George Brown. David Bowdoin received the production award and Mr. William Oyler and Mr. George Bell received faculty honorary membership for their contributions to the college theatre.



Jean Smith, Ronnie McManus, and Stanley Crow, in a scene from Graham Green's "The Potting Shed," Texas Wesleyan College.

KAPPA TAU

Idaho State College

Pocatello, Idaho

Sponsoring the Children's theatre production and the sale of refreshments at productions enabled Kappa Tau to give \$468.00 in drama scholarships this year. The 1959-60 plays were *Lil Abner*, *The Clown and the Circus* (children's play), *Hamlet*, *The Glass Menagerie*, *Teahouse of the August Moon*, *Of Mice and Men*, *The Matchmaker*, and *The Moon is Blue* (reader's theatre) With the retirement of Dr. Vio M. Powell, Allen P. Bloomquist and Dr. Gaylan Collier will become our new sponsors. Cast officers are Roy Zitting, Dennis Goodenough, and Phyllis Seely.

GAMMA DELTA

New Mexico Highlands University

Las Vegas, N. M.

The musical *Of Thee I Sing* and the performance of *Death of a Salesman* made the season of 1959-60 outstanding in dramatic history on the campus of New Mexico Highlands University. Three Sean O'Casey one-act plays were given: *Time to Go*, *End of the Beginning*, and *Hall of Healing*. Dr. Richard O'Connell directed all productions. Prof. O'Connell also directed *Twelfth Night* as a 1960 Summer Play. Eight people were honored by Alpha Psi Omega membership. Cast president is David Gordon; treasurer, William Henderson.

PI TAU

Shippensburg State College

Shippensburg, Penna.

Inherit the Wind, directed by Dr. Carolyn V. Cox, proved to be extremely successful, in fact, it was the most successful production of the past five years. The Masquers also produced *The Curious Savage* which was lighter but very popular. Two Crooks and a Lady, *Enter the Hero*, *Hour of Honor*, *Sunstroke*, *Goodnight, Caroline*, and *The Boor* were all short plays produced and directed by students. Fourteen were admitted to Alpha Psi Omega this season. Cast officers were Miss Linda Bayeas, president, and Miss Sandra Wallace, secretary.

GAMMA UPSILON, Northern Illinois University, DeKalb, Illinois. The University Theatre is happy to announce the opening of its new theatre in the Fine Arts Building. Faculty advisors are Dr. Willard Welsh and Mr. Dale Jeffrys. The major plays staged this past season were *Dark of the Moon*, *School for Wives*, *Lilliom*, and *Skin of Our Teeth*. Cast officers were Kenneth Swanson, Elinor Pires, and Gerald Hallaron.

PI BETA, Mount Mary College, Milwaukee 10, Wis. The major plays, *Craig's Wife* and a musical version of *Lute Song*, were directed by Mrs. S. W. Lister. *Hansel and Gretel*, was directed by E. B. Torrance. The one-act plays, *Three Lepers of Suk-el-Gareb*, *The Maker of Dreams*, and a radio adaptation of de Maupassant's *The Necklace* were given. Donna Dries and Margaret Schumy were student directors.

PI OMEGA, Sterling College, Sterling, Kansas. Director of the College Theatre, Prof. Clayton C. Campbell, staged *Victoria Regina*, and *Papa is All*. Student-directed one-act plays were *The Dwelling Oaks*, *The Valiant*, *Miss Personality Plus*, *Safe Harbor*, and *Game of Chess*. Next year we will stage *Our Town* and *Everyman Today*. Cast officers are Richard Stewart and Pete Kinyon.

IOTA EPSILON, Southwest Texas State College, San Marcos, Texas. The College Players presented *The Diary of Ann Frank*, directed by Willard Booth; *Rockspring*, by Russ Vliet, directed by James Barton, and a staged reading of Anouilh's *Antigone*, directed by Gredna Galloway. The children's play was *Six Who Pass While the Lentils Boil*, by Stuart Walker. For the current season we are staging *The Skin of Our Teeth* and *Time Remembered*.



Scene from "Waiting for Godot," Pacific Lutheran College, Tacoma, Wash. Dr. Theodore H. Karl, director.

THETA PI

Pacific Lutheran College Tacoma 44, Washington

Dr. Theodore O. H. Karl supervises the College Theatre at Pacific Lutheran University. Mr. Eric Nordholm designed the sets and directed two Children's Theatre productions, *Rip Van Winkle* and *Beauty and the Beast*. Miss Jane Smith directed *Hedda Gabler*, and *Visit to a Small Planet* was the Homecoming Play. Jane Ross directed *Waiting for Godot*, and received the treasured Dramatic Award by earning 365 points in her college career. Alpha Psi Omega directed Dickens' *Christmas Carol* and three one-act plays: *Lord Byron's Love Letters*, *The Brute*, and *Ille*.

ZETA ALPHA

Abilene Christian College Abilene, Texas

The Zeta Alpha cast of Alpha Psi Omega started the year with the production of *The Student Prince*, in cooperation with the music department. The show played to over 5000 people at Homecoming. Two originals, written by Peter Dart, were directed by him for a December opening. *Time Limit!* was staged on February 4, 5, and 6. The season ended with the production of *Shaw's Arms and the Man*. Faculty sponsor, Dr. Gaylan Collier, directed *Anastasia* for the Abilene Community Theatre, and a number of members of the Zeta Alpha cast played roles, including Connie Bennett as the titular lead. Members of the cast are: Peter Dart, David Rigney, Jo Ann Rigney, Frank Morris, Don Wilmeth, Bee Harbin, Connie Bennett, Peggy Ward, Floyd Odom, Nancy Hood, Jayleta Glaze, Ed Voss, and Sue Rummell.

ALPHA KAPPA

University of Tampa Tampa, Florida

The University Theatre had one of its most interesting and challenging seasons in many years. Director John J. von Gossel directed *Dial "M" for Murder*, and started a "Salon Theatre" series of original plays and experimental productions. An evening of Shakespeare and Shaw was concluded with a reception-discussion and refreshments. An original play, *The Hunt*, by Jerry Wehring and Don Coast provided another program of the series. Nine writers have qualified for Alpha Psi Omega. President of Alpha Kappa Cast is Joy Ellis Giele; Sally Correll, secretary.



Terry Reister (Judge) and Gene Minick in scene from "Inherit the Wind," Lynchburg College, Robert C. Hailey, director.

GAMMA PHI

Rocky Mountain College Billings, Montana

This year we began our drama season with the staging of the *Student Prince*. Then we put on the *Christmas Carol* for our annual Christmas production. After three successful nights of our feature play, *Romanoff and Junietz*, in Billings, we went on our annual drama tour across Montana. This year our tour covered about 1000 miles of western, central, and southeastern Montana. Mrs. Marjorie Lauson directed all productions. Cast president was David Dover; secretary was Marlen C. Anderson.

ALPHA DELTA

Tarkio College Tarkio, Missouri

The Tarkio College Theatre season began with the production of *The Mousetrap*, by Agatha Christie. Goodrich and Hackett's *The Diary of Anne Frank* followed, and Shaw's *Pygmalion* was the last of the major productions. All were directed by Henry H. Blanke, Jr., who is the sponsor of Alpha Psi Omega. A children's play, *Mr. Bunch's Toys*, and a play reading of *The Green Pastures* were directed by Mrs. Phyllis Blanke, who also designed and built the costumes for the major productions. Also, the department sponsored a Tri-State Speech Contest for high school students. The best actor and actress were Rob Collins and Sharon Grandstaff. Alpha Delta grew from three to twelve members, and Dora Schroedter is the new president.

NU UPSILON

Nebraska State College Kearney, Nebraska

The 1959-60 season was one of the most successful seasons in recent years for the College Theatre under the direction of Wesley J. Jensby. The musical production was Jerome Kern's *Show Boat*. Mr. William Lynn of the music department collaborated with Mr. Jensby for this fine production. Other plays presented last season were: *The Diary of Anne Frank*, *Teahouse of the August Moon*, and Tennessee Williams' *Summer and Smoke*. The musical played to sell-out audiences each night of its four-night run, and hold-over performances were given. Among the productions planned for next year are *South Pacific* and *Death of a Salesman*. Nineteen members were initiated into Alpha Psi Omega this year. The organization plans play reading sessions and an original one-act play-writing contest for next season. The cut included is a scene from the production of *Summer and Smoke*, featuring Gabrielle Peterson and Jim Wheeler.

EPSILON

Lynchburg College

Lynchburg, Va.

The Fall Production, 1959, was *The Tea-house of the August Moon*. The Spring Production, 1960, was *Inherit the Wind*, both directed by Prof. Robert C. Hailey. Two initiation ceremonies were conducted during the year, and thirteen new members were accepted to the cast. Officers for the coming year are: Tony Mendez, Bill German, Nancy McMalns, and Clifton Potter. The Alpha Psi senior award was presented to John Barnett, who designed and built the sound system for our theatre. The award is given for meritorious service to the Lynchburg College Theatre.

ALPHA GAMMA

Morningside College

Sioux City 6, Ia.

The Morningside College Speech and Drama Department produced Elmer Rice's *The Adding Machine* and James Thurber's *Many Moons*, directed by Prof. Robert Quinn. The Rice play toured to Yankton College, South Dakota, and the Thurber play was given at local schools. A student directed *Murder in the Cathedral* was a part of Religious Emphasis Week. *Christ in the Concrete City* was produced at a Young People's League, college chapel programs, and as a Sunday Church service in Akron, Ia.

OKLAHOMA GAMMA

Oklahoma City Univ. Oklahoma City, Okla.

The University Theatre of Oklahoma City University captured the public interest with its 1959-1960 season of high quality productions. Dr. Jack Cogdill, chairman of the department, opened the season with *Carousel*. Marianna Davenport directed *Dial M for Murder* and *Death of a Salesman*. Dr. Cogdill directed *Antigone* and *Twentieth Century*. The short plays were *A Phoenix Too Frequent*, *Boy With a Cart*, *The Apollo of Bellac*, and *Amahl and the Night Visitors*. The current season's selections are *Brigadoon*, *Androcles and the Lion*, *The Glass Menagerie*, *The Crucible* and *Come Back Little Sheba*, and *The Taming of the Shrew*. Eleven students qualified for Alpha Psi Omega. Cast officers are Buzz Moore and Mary Lynn Gill.

IOTA GAMMA

Cedar Crest College

Allentown, Pa.

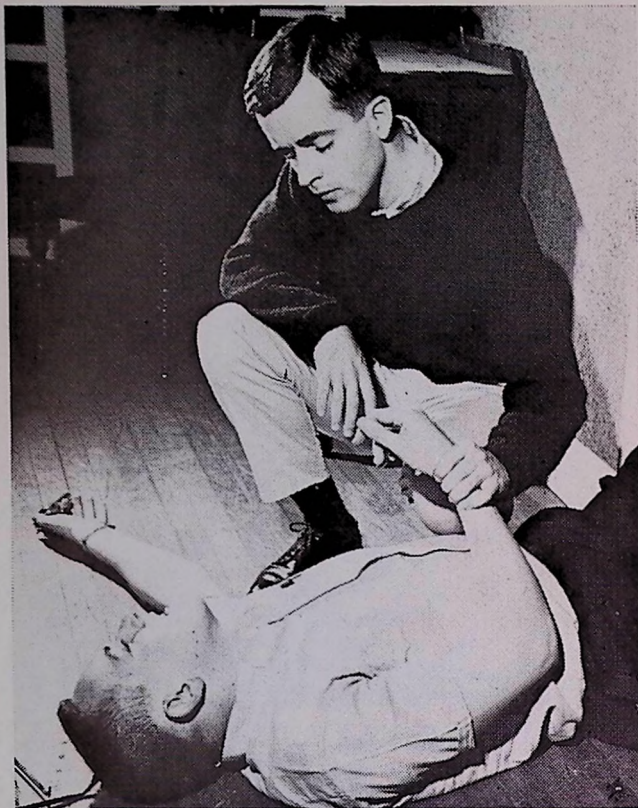
The Chalk Circle, an authentic Chinese Drama opened the 1959-60 season of the Buskin Society. Easter season was observed by the production of the original "Maastrich Easter Pageant." This was done in conjunction with the Concert Choir of Cedar Crest College. The dramatic effects were under the direction of Dr. Constance Ruys and the musical element was directed by Wilber W. Hollman. This play was presented both at Cedar Crest College and at Muhlenberg College. The spring dramatic presentation was the *Trojan Women*, of Euripides. This performance marked the 36th annual Greek Drama given on campus. Three new members were received into Alpha Psi Omega: Anne Lynn, Elizabeth Seyfert, and Karlene Reinhardt.



Scene from Act I of "Skin of Our Teeth," West. Va. Inst. of Technology, Byron Schaffer, Jr., director. (L. to R.) Nancy Anderson, Phyllis Bailey, Kenley Hamlin, Gail McMellon, Ken Rayl.



Linda Martin in "The Glass Menagerie," Texas College of Arts & Industries. Keith Kennedy, designer and director.



Denver Wilson and John Holt in "The Bat," directed by Virginia Pomroy, Morris Harvey College, Charleston, W. Va.

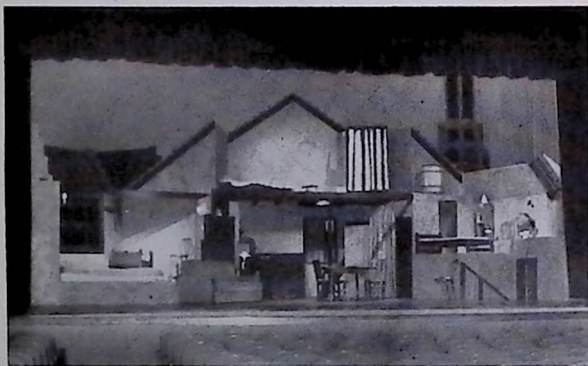
KAPPA RHO, Georgetown College, Georgetown, Ky. The major productions of Maskrafters Theatre were *Outward Bound*, *Joan of Lorraine*, and the musical show, *Brigadoon*, all directed by Prof. Harold Hunt. Kappa Rho cast officers are George Bryan and Charles Bush.

ALPHA ZETA, Central College, Pella, Ia. Faculty director, Prof. Maurice Birdsall staged the Mid-West premier of Ustinov's *Romanov and Juliet*, and the U. S. premier of the religious play, *Go Down Moses*. Other long plays were *The Diary of Ann Frank*, *Only an Orphan Girl*, and the touring plays, *The Sons of Adam* and *Christ in the Concrete City*. During 1960-61, the touring plays will be *The Sons of Adam* and *Go Down Moses*. Awards and honors were presented to Bill Lubenow, Judy Smith, Bob Wegter, Jim Redeker, Carolyn Te Beest, Dave Lynachon and Neal Busker. Evelyn Wilkins was cast secretary.

KAPPA XI, State Teachers College, Frostburg, Md. The Little Theatre, director, Prof. Dorothy Stone White. The long plays this year were *Hay Fever*, *Pygmalion*, and *Damn Yankee*, musical. Kappa Xi Cast did the lighting for the Junior Woman's Club Extravaganza. The Cast has established a drama scholarship. Miss Suzanne Ebersole, Kappa Xi President, is the first recipient. Other cast officers are Louise Downton, secretary, and Donald Turley, treasurer.

PI XI, Nebraska State Teachers College, Chadron, Nebraska. The Chadron State Players staged *The Importance of Being Earnest*, *Ondine*, by Giraudoux, and *South Pacific*, by Oscar Hammerstein, II, all directed by Dr. Eugene Rydahl. One-act plays were *The Man in the Stalls*, *The Waxen Man*, by Mary Reynolds, *The Boor*, and a student-written play, *Aveant Courier*, by Paul Moss. Nine other one-acts were staged during the year. Selected for the current season of 1960-61 are *J. B.*, *Glass Menagerie*, and *Three Men on a Horse*. Eleven Players were honored by Alpha Psi Omega membership. Cast officers were Paul T. Mailander and Marlene Rassmussen.

IOTA, Incarnate Work College, San Antonio, Texas. The staging of *The Knight of the Burning Pestle*, by Beaumont and Fletcher required much theatre research in Elizabethan drama to stage effectively. Sister Mary Helene and Mr. Charles Myler of St. Mary's College were co-directors. Sister Mary Helene also directed *The Upper Room*, by Robert Beuson. Judy Colgan directed the one-act play *Be a Little Coo Coo*. Productions of *Machbeth* and *Comedy of Errors* by Players Incorporated were a highlight of the season.



MODESTO JUNIOR COLLEGE, setting for "The Diary of Anne Frank." Director, Frank Delamarter, Tech. Director, Don Roe.

MU PI, Creighton University, Omaha, Nebr. The University Theatre, directed by Rev. Anthony P. Weber, S.J., presented *Skin of Our Teeth*, the musical show, *Paint Your Wagon*, both directed by Harry Langdon, and a student-directed variety show, *Creighton Capers*. Cast officers were Steve Cannon and Marian A. Schiel.

NU LAMBDA, College of Notre Dame of Maryland, Baltimore. On May 18, The Merrie Masquers celebrated the Silver Jubilee of our faculty director, Miss Aileen Mize, with a formal banquet. Our major production was *Lady Precious Stream*. One-act plays were *The Bad Penny* and *The Shadowed Star*. Mary Lou Donnelly and Barbara McGrath acted in leading roles of *Othello* at Loyola College. Eleven students made up the charter group at the installation of Nu Lambda Cast.

ALPHA UPSILON, Clarion State College, Clarion, Pa. The College Players under the direction of Prof. Bob Copeland, staged *Time Limit*, *The Taming of the Shrew*, and *The Girl of the Golden West*. Plays selected for the 1960-61 season are *Harvey*, *Teahouse of the August Moon*, *Glass Menagerie*, and *Macbeth*. Cast officers are Jack C. King, president; Cathy Richardson, secretary. Ten members were admitted to Alpha Upsilon Cast.

PI ETA, Birmingham Southern College, Birmingham, Ala. Dr. Arnold Powell, director of the College Theatre, presented three major plays: *The Cherry Orchard*, by Chekov; *The Boy Friend*, and *Visit to a Small Planet*. *Caught Dead*, a musical by Dr. Powell and Hugh Thomas, is planned for the current season. Eight students were admitted to Alpha Psi Omega. Cast officers were John Kitchin and Pat King.

IOTA NU, Immaculata College, Immaculata, Pa. Cue and Curtain Players, Sister Mary Donatus, director, will sponsor a Play Festival with ten neighboring colleges in the Philadelphia area participating. During the past season, *The Merchant of Venice* was staged under the co-direction of Sister Mary Donatus and Mr. Thomas Corr. Ann Lowell and Patricia Weidenbacher were assistant directors. The Iota Nu members sponsored an intramural one-act play contest. Eight girls received Alpha Psi Omega membership. Cast officers were Ann Lowell and Barbara Barry.

NU NU, Findlay College, Findlay, Ohio. Irene Sharninghouse, director. Long plays: *My Three Angels* and *Witness for the Prosecution*, both directed by Mrs. Sharninghouse. A short play was *If Men Played Cards as Women Do*. A special award was given to Ronald Martin as the student contributing the most to the dramatic program for the year. The members also presented four programs outside the college and designed the set for *Manhattan Tower*. The chapter wrote the script and directed the program for the annual College May Day Festival. Three were admitted to Alpha Psi Omega. Cast officers were Ronald Martin, president, and Ken Zimmerman, secretary.

RHO THETA, Paterson State College, Paterson, N. J. Pioneer Players, Robert C. Leppert, director. Long plays: *Antigone*, by Anouilh, and *Hay Fever*, by Noel Coward. Both were directed by Robert Leppert. Five were admitted to Alpha Psi Omega membership this year. The Cast officers were Toni Kewal, president, and Adrienne Levine, secretary.



Phyllis Clark and Brent Thomas in a scene from "The Matchmaker" by Thornton Wilder, Idaho State College, Dr. Vio M. Powell, director.



(L. to R.) Nancy Wesley, Karen Gannt, Manford Barber in "Dear Brutus," Texas College of Arts & Industries. Dr. Albert E. Johnson, director; Keith Kennedy, technical director.



"Fanny" by S. N. Behrman and Joshua Logan, Prof. Eugene J. Blackman, director. Mr. Charles Devlin, technical director, Northeastern Univ., Boston. Set by Larry Blumsack costumes by Roberta Tobin and Natalie Barnett.

IOTA PSI

Manchester College North Manchester, Indiana

Prof. John Baldwin, director. Long plays: *Diary of a Scoundrel*, *Rainmaker*, and *Romeo and Juliet*, directed by Prof. Baldwin. Short plays: *Family Affair*, *Sorry, Wrong Number*, and *The Lesson*. Fourteen were admitted to Alpha Psi Omega this year. Cast officers were Dorothy Kreglow, president, and Joyce Rupel, secretary-treasurer.

ALPHA OMICRON

Bloomsburg State College Bloomsburg, Penna.

Miss Mary Homrighous, director. Long plays: *The Cave Dwellers*, directed by Mr. William Cope and *The Heiress*, directed by Miss Mary Homrighous. Short plays: *Twelve Pound Look*, directed by Judith Wolf, *Overruled*, directed by Carol Mazza, and *Lord Byron's Love Letter*, directed by Bob Deibler. Four were admitted to Alpha Psi Omega this year. Cast officers were Gloria Glahn, president; Anna Czepukaitis, secretary, and Joseph Zapach, treasurer.

ETA RHO

West Liberty State College West Liberty, W. Va.

Prof. Vernon D. Riemer, director. Long plays: *My Three Angels* and *Antigone* in modern dress. We did thirteen student-directed one-act plays. Our main production for next year is *Visit to a Small Planet*. Ten were admitted to Alpha Psi Omega membership. Cast officers were Cheryl Schleiter, president, and Mary Ann Trombeta, secretary.

DELTA SIGMA

Bethel College North Newton, Kansas

The Bartered Bride, directed by Mr. Gordon Corwin and Dr. Rupert Hohmann.

LAMBDA ETA

Drew University Madison, New Jersey

The Drew Foresters and the Drama Workshop, Dr. Ralph Johnson, director. *The Crucible* was directed by Dr. Johnson. *Guys and Dolls* was directed by Norton Wettstein. One-act plays were *Submerged*, *The Boor*, and *Sorry, Wrong Number*. Cast officers were Judith Smith and Norman MacArthur.

PIONEER PLAYERS

Tusculum College Greenville, Tennessee

Prof. Bruffie Connor, director. Long plays: *The Night Is My Enemy* and *The Silver Cord*, directed by Bruffie Connor. Short plays included *Family Portrait*, *Daughters of Atreus*, and *Suppressed Desires*. Three new members qualified for Alpha Psi Omega membership. Cast officers were Michael McLaughlin, president; Moritt Pharo, secretary.

KAPPA LAMBDA

Flora MacDonald College Red Springs, North Carolina

Prof. John Williams, director. The production selected for next year is *The Glass Menagerie*, by Tennessee Williams. Five new members were admitted to Alpha Psi Omega. Cast officers were Carolyn Harriss, president, and Linda Burkhead, secretary.

IOTA RHO

Coe College Cedar Rapids, Iowa

Jeannette Ringland, director. Long plays: *Thieves Carnival*, *Caesar and Cleopatra*. Short plays: *Hands Across the Sea*, *Where the Cross Is Made*, *Hello Out There!*, *Private Lives*, and *Chee-Chee*. The short plays were directed by the directing class. The chapter produced and presented a musical and satirical review about campus life. Seven new members were admitted to Alpha Psi Omega. Cast officers were Tom Behm, president; Elaine Tsoutsouris, secretary.

OMEGA

Iowa Wesleyan College Mt. Pleasant, Iowa

Long plays: *Sabrina Fair*, *The Crucible*, and *Skin of Our Teeth*, directed by Mrs. Jean Gatch and Bob Fronterhouse. Ten new members qualified for Alpha Psi Omega membership this year. Cast officers were James Payne, president; Patty Hileman, secretary.

RHO ETA

Lebanon Valley College Annville, Pennsylvania

Wig and Buckle, Prof. James Kline, director. Long plays: *Importance of Being Earnest*, by Wilde and *Twelfth Night*, by Shakespeare. Seven were admitted to Alpha Psi Omega this year. Cast officers are George Smith, president and Mary Louise Louke, secretary-treasurer. *Importance of Being Earnest* was also presented on TV.

ARKANSAS DELTA

Little Rock University Little Rock, Arkansas
University Theatre Guild, Prof. Clifford Haislip, director. A highlight of the past season was the touring of a two-hour adaptation of *Macbeth* and *Hamlet* to various high schools. The major plays were *Visit to a Small Planet*, *Diary of Ann Frank*, *All My Sons*, and *Dark of the Moon*. The Shakespeare plays and a one-hour cutting of *Antigone* were student-directed. Plays for the 1960-61 season include *Philadelphia Story*, *Come Back Little Sheba*, *Ghosts*, and *Ah Wilderness*. Cast officers are George Worrell and Aileen Wilbur. Nine members were honored by Alpha Psi Omega membership.

KAPPA NU

West Virginia Institute of Technology Montgomery, West Virginia

The Tech. Players, Byron Schaffer, Jr., director. The Tech. Players have constructed the first permanent arena stage in West Virginia and staged two long plays: *The Skin of Our Teeth* and *Missouri Legend*, by Elizabeth Gibly and the one-act plays: *Hello Out There* and *Fumed Oak*. Plans for next year include *Rainmaker*, *Everyman*, and *The Adding Machine*. Cast officers were James Hopkins and Kenley Hamlin.

PEGASUS PLAYERS

Norwich University Northfield, Vermont

Prof. George R. Turner, director. We presented one long play, *Born Yesterday*, by Garson Kanin. Our short play was *The Celestial Library*, written and directed by J. R. Brownfield. A new auditorium was built and turned over to us in time for *Born Yesterday*. It has all of the latest facilities. Two were admitted to Alpha Psi Omega membership this season: Charles T. Herberle and Christopher D. Righter. Cast officers are Richard H. Negus and Christopher Righter.

IOTA IOTA

Sam Houston State Teachers College Huntsville, Texas

Charles A. Schmidt, director. Long plays: *A Streetcar Named Desire*, directed by James Swain; *The Male Animal*, directed by Patrick Horrigan; *Medea*, directed by Lynn Murray; and *Kismet*, directed by Charles A. Schmidt. Eight were admitted to Alpha Psi Omega this season. Cast officers were James Alfred, president, and Janet Baker, secretary.

BETA SIGMA

State Teachers College Mayville, North Dakota

Dr. Agnes Denman Nelson, director. Long plays: *The Glass Menagerie*, by Tennessee Williams and *Little Women*, by Marion De Forest. Six were admitted to Alpha Psi Omega membership this season. Cast officers were Gary Bonde, president, and Saralee Bateman, secretary-treasurer.

NU ZETA

Trinity College Washington 17, D. C.

Miss Charlotte Brannen, director. Our first year as members of Alpha Psi Omega was an exciting one. The fall production, *The Chalk Garden*, by Enid Bagnold, played to SRO audiences, an unprecedented event. Adele Jones took the leading role of Madrigal and Sheila Garvan played Mrs. St. Maugham. Act II of Giraudoux's *The Madwoman of Chaillot* and scenes from Tennessee Williams' *The Glass Menagerie*, both done in the round, sparked the spring season. Sheila Garvan and Charlotte Tighe starred in the two plays. Men from Georgetown University and Catholic University took male roles. Three were admitted to the Alpha Psi Omega Fraternity this season. Cast officers were Adele Jones, director, and Jane Donovan, secretary-treasurer.

ALPHA IOTA

Berea College Berea, Kentucky

Frederick J. Parrott, director. *The Happy Journey*, *Arla Da Capo*, and twenty-nine other one-act plays were presented during the year. Four were admitted to Alpha Psi Omega membership. Cast officers were Kenton Kyle, president and ???, secretary-treasurer.

BETA XI

Concord College Players, Concord College Athens, West Virginia

Jake J. Whitehead, director. Long plays: *Ten Little Indians*, *The Diary of Anne Frank*, and *My Three Angels*, all directed by Jake J. Whitehead. A scene from a modern play was presented at W. Va. Speech Festival. Alpha Psi Omega fraternity reorganized this year and eight new members were admitted. Cast officers were J. M. Meredith, president and Evelyn Wiley, secretary.

PI KAPPA

David Lipscomb College Nashville 5, Tennessee

Prof. Ben Holland, director. Long plays: *The Miser*, *My Three Angels*, and *Martin Luther*. Our short plays were *For All Our Dead*, *Sorry Wrong Number*, and *So Ends the Night*; the first two directed by Ben Holland and the latter by Alma Sneed. Nine new members were admitted to Alpha Psi Omega. Cast officers are Allan Peltier, president, and Jim Pounders, secretary.

DELTA ALPHA

University of New Brunswick College Hill, Fredericton, N. B., Canada

Prof. Alvin J. Shaw, director. Long plays: *The Mousetrap*, directed by Michael Gordon and *Summer of the 17th Doll*, directed by Prof. Shaw. Some rehearsed readings were produced for the annual Festival of the Arts. The group participated in the New Brunswick Region of Dominion Drama Festival this year. The award for the best supporting actress in the Festival was won by Joyce Campion as "Emma" in *Summer of the 17th Doll*. The cast officers were Walter Learning, president, and Wendy Tidmarsh, secretary.

DELTA CHI

Panhandle Agric. & Mech. College Goodwell, Okla.

Dr. Earle Winters, director. Long plays: *Antigone*, by Jean Anouilh, and *Oklahoma*, by Rodgers and Hammerstein. Short plays: *Forever Till April* and *Thursday Evening*, directed by Jim Clark and Bill Sapp. Five new members were admitted to Alpha Psi Omega. Cast officers were Zetta Moore, president, and Alice Jarvis, secretary-treasurer.

KAPPA ALPHA

Berry College Mt. Berry, Georgia

Dr. William L. Gorden, director. Long plays: *Jane Eyre*, *An Enemy of the People*, directed by Dr. Gorden, and *Antigone*, directed by Mrs. Barbara Paul. Short plays: *Displaced*, *Breaking of Bread*, *Quiet Please*, *Sorry*, *Wrong Number*, *Terrible Meek*, directed by Dr. Gorden, and *Tender Edge*, directed by Mrs. Paul. Our productions for next year include *Ladies Not for Burning*, by Christopher Fry and *Inherit the Wind*, by Jerome Lawrence and R. E. Lee. Seven new members were admitted to Alpha Psi Omega this year. Cast officers were David Johnson, president and Tommie Chandler, secretary and treasurer.

DELTA PI

California State Polytechnic College San Luis Obispo, California

Keith Nielson, director. Long plays: *Picnic* and *Death Takes a Holiday*, both directed by Keith Nielson. One short play was produced this year—*The Valiant*, directed by Jan Ferry. Eight new members were inducted into Alpha Psi Omega. Cast officers were Tom Crawford, president, and George Greelman, secretary-treasurer.

IOTA THETA

Moravian College Bethlehem, Pennsylvania

Blackfriars, Robert Burcaw, director. Long plays: *Medea* and *Blithe Spirit*, both directed by Robert Burcaw. Six members were admitted to Alpha Psi Omega. Cast officers were Cynthia Geiman, president, and Vicki Tinnes, secretary.



Scene from "Teahouse of the August Moon," directed by Prof. Eugene J. Blackman, technical director Charles Devlin; costumes, Norma Barnett, Northeastern University, Boston.



John Schroettner and Joan Roberson in a scene from "The Corn Is Green," directed by Frank Delmarter. Tech. Director, Don Roe Modesto College, California.

ZETA DELTA, Arkansas State Teachers College, Conway, Ark. Leona Scott and Sue Livebark, directors. Long plays: *Speaking of Murder*, directed by Sue Livebark; *Witness for the Prosecution*, and *Silver Whistle*. Seven scenes from Shakespeare and several studio one-act plays were given also. Eleven were admitted to Alpha Psi Omega. Cast officers were Julia Evans, president, and Lula Davis, secretary-treasurer.

LAMBDA MU, Wartburg College, Waverly, Ia. Vernon Lestrud, director. Long plays: *Doctor Faustus*, by Christopher Marlowe and *The Importance of Being Earnest*, by Oscar Wilde. Both were directed by Vernon Lestrud. Short plays: *Le Valet de M. Bouchard*, directed by Don Ehlers; *Melody for Two Apples*, directed by Arlow Rice, and *Altar in the Hills*, directed by Bruce Bergquist. Four were admitted to Alpha Psi Omega. Officers were Robert Rosenberg, president, and June Marolf, secretary.

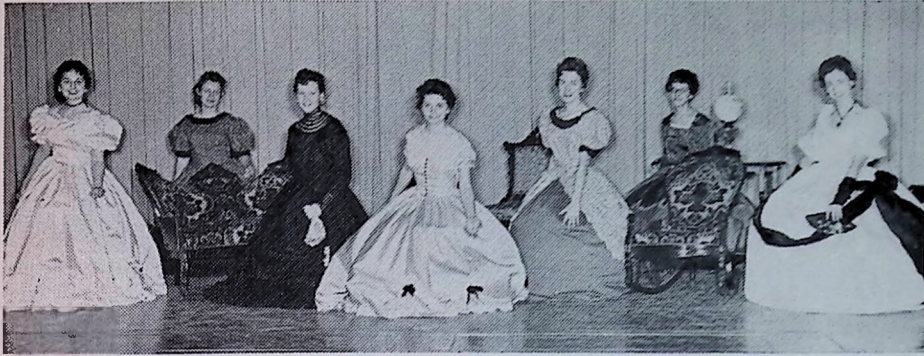
LAMBDA TAU, Emmanuel College, 400 The Fenway, Boston 15, Mass. Sister Catherine Edward, director. Long plays: *Murder in a Nunnery*, by Lavery and *The Crucible*, by Miller. All were directed by Sister Catherine Edward. Ten were admitted to Alpha Psi Omega. Officers are Helen Prescott, president, and Kathleen McEnaney, secretary-treasurer.

DELTA TAU, Ursinus College, Collegeville, Pa. Dr. George Storey, director. Long plays: *Major Barbara*, by Shaw, and *Bel and Candle*, by Van Druten. Both were directed by Dr. I. B. Leaman. Five were admitted to Alpha Psi Omega this season. Cast officers were Philip Rowe, president, and Joan Rifford, secretary.

ZETA EPSILON, Delta State College, Cleveland, Miss. Delta Playhouse, Ruth M. Williams, director. Long plays: *The Kids and The Chalk Garden*, both directed by Ruth M. Williams. Short plays: *Aria De Capo*, directed by Peggy Stallings; *The Banjo Man*, directed by James Onzts, and *The Boor*, directed by Jeanette Bagwell. Five were admitted to Alpha Psi Omega this year. Cast officers were Nancy McLeod, president, and Jeanette Bagwell, secretary-treasurer.

GAMMA EPSILON, Murray State College, Murray, Kentucky. Robert E. Johnson, director. Long plays were *Beyond the Horizon*, *Second Threshold*, *Biography*, and *Cinderella*. Three were admitted to Alpha Psi Omega. Cast officers were C. Kelly McCord, president, and Annette McKnight, secretary-treasurer.

MU NU, Nicholls State College, Thibodaux, La. Mrs. Lera R. Kelly, director. Long plays: *Death Takes a Holiday*, *Good Housekeeping*, and *The Man Who Came to Dinner*. Seven were admitted to Alpha Psi Omega membership. Officers were Miss Jackie Clause, president, and C. Curtis Cook, secretary-treasurer. The highlights of the past drama season were the outstanding work in the field of speech and drama. We also presented a scholarship to an outstanding freshman.



(L. to R.) Pat O'Neal, Connie Perry, Ruth Brumit, Judy Bates, Sharon Holder, Patty Morris and Linda Tison in "One Love Had Mary," Oakland City College, directed by Kerby Ridenour and Dianne Cloin.

PI DELTA

Midwestern University

Wichita Falls, Texas

Dr. Jennie Louise Hindman, director. Long plays: *Sabrina Fair*, directed by Dorothy Derryberry; *Tiger at the Gates*, directed by Loven Orr, and *The Moon Is Blue*, directed by Dr. Hindman. Short plays: *The Apollo of Bellac* and *More to Be Pitied Than Scorned*, both directed by Betty Henderson. This year we have inaugurated a "Green Room" for the comfort and relaxation of the actors. At the close of the 1958-59 season the Pi Delta Cast initiated an award system. Awards were presented to Delenna Rogers, Bain Ellis, and Kaye Williams for Actress of the Year, Actor of the Year, and Technician of the Year respectively. Doyle D. Smith received the Phil Kouri Award for "service above and beyond the call of duty." Eight members were admitted to the Pi Delta cast this year. Officers were Robert E. Moore, president, and Kaye Williams, secretary.

NU KAPPA

Austin College

Sherman, Texas

Paul Beardsley, director. Long plays: *The Mousetrap*, by Agatha Christie, *Christ in the Concrete City*, by Paul W. Turner, and *The Heiress*, by Ruth and Augustus Goetz. Four new members were admitted to Alpha Psi Omega. Cast officers were Richard G. Wood, president; John Cahill, secretary.

GAMMA KAPPA

Edinboro State College

Edinboro, Pennsylvania

Lawrence C. Vincent, director. Long plays: *Julius Caesar*, by Shakespeare; *South Pacific*, by Rogers and Hammerstein, both directed by L. C. Vincent. Short plays: *Gammer Gurton's Needle*, *Trifles*, *Monkey's Paw*, *Sunday Costs Five Pesos*, and *One Bad Penny*. The short plays were all student productions. Cast officers were Richard Smith, president; Sharon Owens, secretary; Rita Balbo, treasurer.

DELTA OMEGA

Judson College

Marion, Alabama

Charles C. Fuller, Jr., director. Long plays: *Twelfth Night*, by Shakespeare, and *The Diary of Anne Frank*, dramatized by Goodrich and Hackett. Short plays: *The Christmas Stranger*, directed by Sandra Macon; *Lady Rosa*, directed by Harriet Lang, and *The Blue Lie*, directed by Mary C. Fogers. Four members were admitted to Alpha Psi Omega. Cast officers were Doris Haskins, president; Barbara Parks, secretary and treasurer.

THETA PSI

Hastings College

Hastings, Nebraska

Dr. Harrold Shiffler, director. Long plays: *Two Blind Mice* and *Antigone*, both directed by Dr. Shiffler. Short plays: *Phoenix Too Frequent*, *Gammer Gurton's Needle*, *The Marriage Proposal*, *If Men Played Cards As Women Do*, and *Really, My Dear . . . Phoenix Too Frequent*, on a double bill, with the one-act comic opera, *La Serva Padrona*, by Pergolesi was presented in cooperation with the music department. This season's awards are: Purple Mask (scholarship and participation), Karen Froyd, Robert Stoner, Gerd Skagen; Senior Achievement Award: Karen Froyd; Freshman Achievement Award: Lanette Adams; Folson Award (for outstanding contribution during the year—\$50.00): David Cunningham; Best Actress Award: Karen Froyd; Best Actor Award: William Bovey; Best Supporting Actress Award: Gerd Skagen; Best Supporting Actor Award: Bob Mandell. Four were admitted to Alpha Psi Omega this season. Cast officers were Karen Froyd, president, and Bob Hill, secretary-treasurer.

THETA TAU

Southwestern Louisiana Institute Lafayette, Louisiana

William W. Ellis, director. Long plays: *Ladies in Retirement*, directed by Harold W. Poe; *The Lady's Not for Burning*, *Medea*, and *Pygmalion*, directed by Mr. Ellis. Eight were admitted to Alpha Psi Omega this season. Cast officers were Pauline Harding, president, and Catherine Cox, secretary-treasurer.

PI LAMBDA

Hilltop Players, Illinois College

Jacksonville, Illinois

Mr. M. Darrell Reagan, director. Long plays: *The Bat*, *Big Inch* (original musical), and *Macbeth*. Short plays: *Nine North Chetotah Lane*, *The Choir*, and *One More Chance*. Twelve were admitted to Alpha Psi Omega this season. Cast officers were Martha Thomason, president, and Dorothy Ivemeyer, secretary-treasurer.

PI RHO

Friends University

Wichita 13, Kansas

White A. Jacob, director. Long plays: *A Man Called Peter* and *Smilin' Through*, all directed by White A. Jacob.

DELTA EPSILON

North Central College

Naperville, Illinois

Dr. Donald T. Shanower, director. Long plays: *The Mousetrap*, *Diary of Anne Frank*, *Antigone*, and *Everyman Today*, all directed by Dr. Shanower. Cast officers were Robert Welk, president, and Mark Minor, secretary-treasurer.

DIRECTORY OF THE ALPHA PSI OMEGA

GRAND DIRECTOR

DR. YETTA G. MITCHELL

New York University
Washington Square

GRAND BUSINESS MANAGER

DR. PAUL F. OPP

Box 347, Fairmont, West Virginia
(Address all communications to the Grand
Business Mgr.)

GRAND STAGE MANAGER

PROF. DONALD GARNER

Wayne State University
Detroit, Michigan

ALPHA, Fairmont State College,
Fairmont, W. Va.
BETA, Marshall College,
Huntington W. Va.
GAMMA, Washington & Lee University,
Lexington, Va.
DELTA, Acadia University,
Wolfville, N. S., Canada
EPSILON, Lynchburg College,
Lynchburg, Va.
ZETA, Western State College,
Gunnison, Colo.
ETA, The College of Idaho,
Caldwell, Idaho
THETA, Baker University,
Baldwin, Kan.
IOTA, The Johns Hopkins University,
Baltimore, Md.
KAPPA, Ottawa University,
Ottawa, Kan.
LAMBDA, Washington & Jefferson College,
Washington, Penna.
MU, University of Texas,
Austin, Texas
NU, University of Houston,
Houston, Texas
XI, Chico State College,
Chico, Calif.
OMICRON, Wilmington College,
Wilmington, Ohio
PI, West Virginia University,
Morgantown, W. Va.
RHO, Lincoln Memorial University,
Harrington, Tenn.
SIGMA, Linfield College,
McMinnville, Ore.
TAU, Texas Technological College,
Lubbock, Texas
UPSILON, Kansas Wesleyan College,
Salina, Kan.
PHI, Colorado State College of Education,
Greely, Colo.
CHI, Buena Vista College,
Storm Lake, Iowa
PSI, Lindenwood College,
St. Charles, Mo.
OMEGA, Iowa Wesleyan College,
Mt. Pleasant, Iowa
ALPHA ALPHA, University of Mississippi,
University, Mississippi
ALPHA BETA, Coker College,
Hartsville, S. C.
ALPHA GAMMA, Morningside College,
Sioux City, Iowa
ALPHA DELTA, Tarkio College,
Tarkio, Mo.
ALPHA EPSILON, Westminster College,
Fulton, Missouri
ALPHA ZETA, Central College,
Pella, Iowa
ALPHA ETA, Minnesota Teachers College,
Moorhead, Minn.
ALPHA THETA, McKendree College,
Lebanon, Ill.
ALPHA IOTA, Berea College,
Berea, Ky.
ALPHA KAPPA, University of Tampa,
Tampa, Fla.
ALPHA LAMBDA, Wisconsin State Teachers
College, Superior, Wis.
ALPHA MU, Emory and Henry College,
Emory, Va.
ALPHA NU, Colgate University,
Hamilton, N. Y.
ALPHA XI, Arkansas College,
Batesville, Ark.
ALPHA OMICRON, State Teachers College,
Bloomington, Pa.
ALPHA PI, Millsaps College,
Jackson, Miss.
ALPHA RHO, West Virginia Wesleyan College,
Buckhannon, W. Va.
ALPHA SIGMA, Louisiana College,
Pineville, La.
ALPHA TAU, Mt. Union College,
Alliance, Ohio
ALPHA UPSILON, State Teachers College,
Clarion, Pa.
ALPHA PHI, State Teachers College,
Valley City, N. D.
ALPHA CHI, Shepherd State College,
Shepherdstown, W. Va.
ALPHA PSI, State Teachers College,
La Crosse, Wis.
ALPHA OMEGA, Augustana College,
Rock Island, Ill.
BETA ALPHA, Humboldt State College,
Arcata, Calif.

BETA BETA, Lafayette College,
Easton, Pa.
BETA GAMMA, Bethany College,
Bethany, W. Va.
BETA DELTA, New York University,
Washington Square, New York
BETA EPSILON, Rutgers University,
New Brunswick, N. J.
BETA ZETA, East Central State College,
Ada, Okla.
BETA ETA, Huntington College,
Montgomery, Ala.
BETA THETA, University of Georgia,
Athens, Ga.
BETA IOTA, Valparaiso University,
Valparaiso, Ind.
BETA KAPPA, Upper Iowa University,
Fayette, Iowa
BETA LAMBDA, University of Delaware,
Newark, Del.
BETA MU, Union University,
Jackson, Tenn.
BETA NU, Arizona State College,
Flagstaff, Ariz.
BETA XI, Concord State College,
Athens, W. Va.
BETA OMICRON, State Teachers College,
California, Pa.
BETA PI, William Jewel College,
Liberty, Mo.
BETA RHO, Nebraska State Teachers College,
Wayne, Neb.
BETA SIGMA, North Dakota State College,
Mayville, N. D.
BETA TAU, Newberry College,
Newberry, S. C.
BETA UPSILON, New Mexico Western College,
Silver City, N. M.
BETA PHI, Stephen F. Austin College,
Nacogdoches, Texas
BETA CHI, Defiance College,
Defiance, Ohio
BETA PSI, Kent State University,
Kent, Ohio
BETA OMEGA, Keuka College,
Keuka Park, N. Y.
GAMMA ALPHA, Southeastern State College,
Durant, Okla.
GAMMA BETA, Trinity University,
San Antonio, Texas
GAMMA GAMMA, University of Alabama,
University, Ala.
GAMMA DELTA, New Mexico Highlands
University, Las Vegas, N. M.
GAMMA EPSILON, Murray State College,
Murray, Ky.
GAMMA ZETA, Colorado State Univ.,
Fort Collins, Colo.
GAMMA ETA, Lenoir Rhyne College,
Hickory, N. C.
GAMMA THETA, Indiana Central College,
Indianapolis, Ind.
GAMMA IOTA, State Teachers College,
Arlene, Texas
GAMMA KAPPA, State Teachers College,
Flinnboro, Pa.
GAMMA LAMBDA, Baylor University,
Waco, Texas
GAMMA MU, Muhlenberg College,
Allentown, Pa.
GAMMA NU, Georgia State College of
Business ADM., Atlanta, Ga.
GAMMA XI, Dickinson State College,
Dickinson, N. D.
GAMMA OMICRON, Shurtleff College,
Alton, Ill.
GAMMA PI, Tift College,
Forsythe, Ga.
GAMMA RHO, Northwestern State College,
Alva, Okla.
GAMMA SIGMA, Cascade College,
Portland, Ore.
GAMMA TAU, University of South Carolina,
Columbia, S. C.
GAMMA UPSILON, Northern Illinois
University, DeKalb, Ill.
GAMMA PHI, Rocky Mountain College,
Billings, Mont.
GAMMA CHI, Southwestern State College,
Weatherford, Okla.
GAMMA PSI, Roanoke College,
Salem, Va.
GAMMA OMEGA, Montana State College,
Bozeman, Mont.
OKLA. GAMMA, Oklahoma City University,
Oklahoma City, Okla.
DELTA ALPHA, University of New Brunswick,
Frederickton, N. B., Canada

DELTA BETA, Alma College,
Alma, Mich.
DELTA GAMMA, Alderson-Broaddus College,
Phillippi, W. Va.
DELTA DELTA, Hampden-Sydney College,
Hampden-Sydney, Va.
DELTA EPSILON, North Central College,
Naperville, Ill.
DELTA ZETA, University of Dubuque,
Dubuque, Iowa
DELTA ETA, Northwestern State College,
Natchitoches, La.
DELTA THETA, State Teachers College,
Minot, N. D.
DELTA IOTA, Ouachita College,
Arkadelphia, Ark.
DELTA KAPPA, Baylor College,
Belton, Texas
DELTA LAMBDA, Arizona State College,
Tempe, Ariz.
DELTA MU, Winthrop College,
Rock Hill, S. C.
DELTA NU, Florida Southern College,
Lakeland, Fla.
DELTA XI, Rensselaer Polytechnic Institute,
Troy, N. Y.
DELTA OMICRON, Doane College,
Crete, Neb.
DELTA PI, California State Polytechnic
College, San Luis Obispo, Calif.
DELTA RHO, Russell Sage College,
Troy, N. Y.
DELTA SIGMA, Bethel College,
North Newton, Kan.
DELTA TAU, Ursinus College,
Collegeville, Pa.
DELTA UPSILON, Texas Christian University,
Fort Worth, Texas
DELTA PHI, Slippery Rock State College,
Slippery Rock, Pa.
DELTA CHI, Panhandle A&M and Mech.
College, Goodwell, Okla.
DELTA PSI, Mississippi State College,
Columbus, Miss.
DELTA OMEGA, Judson College,
Marion, Ala.
ZETA ALPHA, Abilene Christian College,
Abilene, Texas
ZETA BETA, Stout State College,
Menomonie, Wis.
ZETA GAMMA, Simpson College,
Indianola, Iowa
ZETA DELTA, Arkansas State Teachers College,
Conway, Ark.
ZETA UPSILON, Delta State Teachers College,
Cleveland, Miss.
ZETA ZETA, Bethany College,
Lindsborg, Kan.
ZETA ETA, University of Pittsburgh,
Pittsburgh, Penna.
ZETA THETA, Hardin Simons University,
Ablene, Texas
ZETA IOTA, Drexel Institute of Tech.,
Philadelphia, Pa.
ZETA KAPPA, College of the Ozarks,
Clarksville, Ark.
ZETA LAMBDA, Central College,
Fayette, Mo.
ZETA MU, Ashland College,
Ashland, Ohio
ZETA NU, State College of Education,
Geneseo, N. Y.
ZETA XI, La Verne College,
La Verne, Calif.
ZETA OMICRON, Hendrix College,
Conway, Ark.
ZETA PI, Mercer University,
Macon, Ga.
ZETA RHO, State Teachers College,
Florence, Ala.
ZETA TAU, Texas Western College,
El Paso, Texas
ZETA UPSILON, Heidelberg College,
Tiffin, Ohio
ZETA PHI, Eastern Teachers College,
Richmond, Ky.
ZETA CHI, Union College,
Barboursville, Ky.
ZETA PSI, Ball State College,
Muncie, Ind.
ZETA OMEGA, Women's College of N. C.,
Greensboro, N. C.
ETA ALPHA, Marietta College,
Marietta, Ohio
TENN. ETA, Milligan College,
Milligan College, Tenn.
KY. LAMBDA, Kentucky Wesleyan College,
Owensboro, Ky.

TENN. ZETA, Tennessee Wesleyan College, Athens, Tenn.

OKLA. GAMMA, Oklahoma City University, Oklahoma City, Okla.

VT. ETA, Norwich University, Northfield, Vermont.

ETA BETA, Carson Newman College, Jefferson City, Tenn.

ETA GAMMA, Virginia Polytechnic Institute, Blacksburg, Va.

ETA DELTA, Central State Teachers College, Stevens Point, Wis.

ETA EPSILON, Spring Hill College, Mobile, Ala.

ETA ZETA, Upsala College, East Orange, N. J.

ETA ETA, Mary Washington College, Fredericksburg, Va.

ETA THETA, Washburn University, Topeka, Kan.

ETA IOTA, West Texas State College, Canyon, Texas.

ETA KAPPA, Northern Montana College, Havre, Montana.

ETA LAMBDA, E. Montana College of Ed., Billings, Mont.

ETA MU, Little Rock University, Little Rock, Ark.

ETA NU, Meredith College, Raleigh, N. C.

ETA XI, Thiel College, Greenville, Pa.

ETA OMICRON, Carthage College, Carthage, Ill.

ETA PI, Mississippi State College, State College, Miss.

ETA RHO, West Liberty State College, West Liberty, W. Va.

ETA SIGMA, State Teachers College, Troy, Ala.

ETA TAU, Carroll College, Waukesha, Wisconsin.

ETA UPSILON, Bridgewater College, Bridgewater, Va.

ETA PHI, Youngstown College, Youngstown, Ohio.

ETA CHI, Pacific University, Forest Grove, Ore.

ETA PSI, Furman University, Greenville, S. C.

ETA OMEGA, Harding College, Searcy, Ark.

THETA ALPHA, Glenville State College, Glenville, W. Va.

THETA BETA, Georgia State College for Women, Milledgeville, Ga.

THETA GAMMA, La Grange College, La Grange, Ga.

THETA DELTA, The University of Tennessee, Knoxville, Tenn.

THETA EPSILON, McPherson College, McPherson, Kan.

THETA ZETA, State Teachers College, Lock Haven, Pa.

THETA ETA, Howard College, Frederick, Md.

THETA THETA, Waynesburg College, Waynesburg, Pa.

THETA IOTA, Western Carolina College, Cullowhee, N. C.

THETA KAPPA, San Francisco State College, San Francisco, Calif.

THETA LAMBDA, Georgia State Teachers College, Collegeboro, Ga.

THETA MU, University of Minnesota, Duluth, Minn.

THETA NU, Oakland City College, Oakland City, Ind.

THETA XI, George Peabody College, Nashville, Tenn.

THETA OMICRON, Texas Wesleyan College, Fort Worth, Texas.

THETA PI, Pacific Lutheran College, Parkland, Wash.

THETA RHO, Westworth College, Spokane, Wash.

THETA SIGMA, Missouri Valley College, Marshall, Mo.

THETA TAU, Southwestern Louisiana Institute, Lafayette, La.

THETA UPSILON, Radford State College, Radford, Va.

THETA PHI, Tusculum College, Selingsgrove, Pa.

THETA CHI, Eastern Oregon College, La Grande, Ore.

THETA PSI, Hastings College, Hastings, Neb.

THETA OMEGA, State University of N. Y., Fredonia, N. Y.

IOTA ALPHA, Pembroke State College, Pembroke, N. C.

IOTA BETA, River Falls State College, River Falls, Wis.

IOTA GAMMA, Cedar Crest College, Allentown, Pa.

IOTA DELTA, McMurry College, Abilene, Texas.

IOTA EPSILON, S. W. Texas State College, San Marcos, Texas.

IOTA ZETA, Mercyhurst College, Erie, Pa.

IOTA ETA, C. W. Post College, Greenvale, N. Y.

IOTA THETA, Moravian College for Women, Bethlehem, Pa.

IOTA IOTA, Sam Houston State College, Huntsville, Texas.

IOTA KAPPA, Davidson College, Davidson, N. C.

IOTA LAMBDA, Westmar College, Lemars, Iowa.

IOTA MU, Arkansas A. M. and N. College, Pine Bluff, Ark.

IOTA NU, Immaculata College, Immaculata, Pa.

IOTA XI, Incarnate Word College, San Antonio, Texas.

IOTA OMICRON, State Teachers College, East Stroudsburg, Pa.

IOTA PI, Our Lady of the Lake College, San Antonio, Texas.

IOTA RHO, Coe College, Cedar Rapids, Iowa.

IOTA SIGMA, State Teachers College, Towson, Maryland.

IOTA TAU, Longwood College, Farmville, Va.

IOTA UPSILON, Belhaven College, Jackson, Miss.

IOTA PHI, American University, Washington, D. C.

IOTA CHI, Columbia College, Columbia, S. C.

IOTA PSI, Manchester College, North Manchester, Ind.

IOTA OMEGA, Davis-Elkins College, Elkins, W. Va.

KAPPA ALPHA, Berry College, Mount Berry, Ga.

KAPPA BETA, Gannon College, Erie, Pa.

KAPPA GAMMA, S. W. Missouri State College, Springfield, Mo.

KAPPA DELTA, Bethel College, McKenzie, Tenn.

KAPPA EPSILON, Briarcliff College, Sioux City, Iowa.

KAPPA ZETA, Fenn College, Cleveland, Ohio.

KAPPA ETA, Ferris Institute, Big Rapids, Mich.

KAPPA THETA, Central Michigan State College, M. Pleasant, Mich.

KAPPA IOTA, Southwestern College, Memphis, Tenn.

KAPPA KAPPA, University of Portland, Portland, Ore.

KAPPA LAMBDA, Flora MacDonald College, Red Springs, N. C.

KAPPA MU, Oregon College of Education, Monmouth, Ore.

KAPPA NU, West Virginia Institute of Technology, Monticemy, W. Va.

KAPPA XI, Frostburg State College, Frostburg, Md.

KAPPA OMICRON, Belmont College, Nashville, Tenn.

KAPPA PI, University of Puerto Rico, Rio Piedras, P. R.

KAPPA RHO, Georgetown College, Georgetown, Ky.

KAPPA SIGMA, N. W. Missouri State College, Marysville, Mo.

KAPPA TAU, Idaho State College, Pocatello, Idaho.

KAPPA UPSILON, Eastern New Mexico University, Portales, N. M.

KAPPA PHI, Texas College of Arts and Ind., Kingsville, Texas.

KAPPA CHI, Lewis and Clark College, Portland, Ore.

KAPPA PSI, Clemson College, Clemson, S. C.

KAPPA OMEGA, Wayland Baptist College, Plainview, Texas.

LAMBDA ALPHA, Blue Mountain College, Blue Mountain, Miss.

LAMBDA BETA, Keene Teachers College, Keene, N. H.

LAMBDA GAMMA, Middle Tennessee State College, Murfreesboro, Tenn.

LAMBDA DELTA, Morris Harvey College, Charleston, Va.

LAMBDA EPSILON, East Tennessee State College, Johnson City, Tenn.

LAMBDA ZETA, Appalachian State College, Boone, N. C.

LAMBDA ETA, Drew University, Madison, N. J.

LAMBDA THETA, Anderson College, Anderson, Ind.

LAMBDA IOTA, Midland College, Fremont, Neb.

LAMBDA KAPPA, Wagner College, Staten Island, N. Y.

LAMBDA LAMBDA, Arkansas State College, State College, Ark.

LAMBDA MU, Wartburg College, Waverly, Iowa.

LAMBDA NU, Mississippi Southern College, Hattiesburg, Miss.

LAMBDA XI, Ft. Hays Kansas State College, Hays, Kan.

LAMBDA OMICRON, Elon College, Elon, N. C.

LAMBDA PI, Villanova University, Villanova, Pa.

LAMBDA RHO, Central State College, Edmond, Okla.

LAMBDA SIGMA, South Dakota State College, Brookings, S. D.

LAMBDA TAU, Emmanuel College, Boston, Mass.

LAMBDA UPSILON, State Teachers College, Mansfield, Pa.

LAMBDA PHI, Dickinson College, Carlisle, Pa.

LAMBDA CHI, University of Omaha, Omaha, Neb.

LAMBDA PSI, Tusculum College, Greenville, Tenn.

LAMBDA OMEGA, State Teachers College, Oneonta, N. Y.

MU ALPHA, Hillside College, Hillside, Ill.

MU BETA, Emory University, Emory University, Ga.

MU GAMMA, Northeastern State College, Tahlequah, Okla.

MU DELTA, New Mexico A. & M. College, University Park, New Mex.

MU EPSILON, Adams State College, Cairo, Egypt.

MU ZETA, American University, Alamosa, Colo.

MU ETA, Texas State College, Commerce, Texas.

MU THETA, John Carroll University, Cleveland, Ohio.

MU IOTA, Oswego State College, Oswego, N. Y.

MU KAPPA, Sacramento State College, Sacramento, Calif.

MU LAMBDA, Western Ky. State College, Bowling Green, Ky.

MU MU, Beaver College, Jenkintown, Pa.

MU NU, Francis T. Nicholls State College, Thibodaux, Louisiana.

MU XI, Boston University, Boston, Mass.

MU OMICRON, Memphis State College, Memphis, Tenn.

MU PI, Creighton University, Omaha, Neb.

MU RHO, Rhode Island College of Education, Providence, R. I.

MU SIGMA, Albright College, Reading, Pa.

MU TAU, Central Wash. College of Ed., Ellensburg, Wash.

MU UPSILON, Lyscoming College, Williamsport, Pa.

MU PHI, Southern State College, Magnolia, Ark.

MU CHI, Adelphi College, Garden City, L. I., N. Y.

MU PSI, Hofstra College, Hempstead, N. Y.

MU OMEGA, Duquesne University, Pittsburgh, Pa.

MU ALPHA, State Teachers College, Livingston, Ala.

MU BETA, Parsons College, Fairfield, Iowa.

MU GAMMA, Westminster College, New Wilmington, Pa.

MU DELTA, Saint Mary's College, Winona, Minn.

MU EPSILON, Evansville College, Evansville, Ind.

MU ZETA, Trinity College, Washington, D. C.

MU ETA, Niagara University, Niagara University, N. Y.

MU THETA, Hamilton College, Clinton, N. Y.

MU IOTA, Hartwick College, Oneonta, N. Y.

MU KAPPA, Austin College, Sherman, Texas.

MU LAMBDA, Notre Dame College of Md., Baltimore, Md.

MU MU, Peru State Teachers College, Peru, Nebraska.

MU NU, Findlay College, Findlay, Ohio.

MU XI, St. Mary's Dominican College, New Orleans, La.

MU OMICRON, Indiana State Teachers College, Indiana, Pa.

MU PI, North Georgia College, Dahlonega, Ga.

MU RHO, The College of Emporia, Emporia, Kan.

MU SIGMA, Lake Forest College, Lake Forest, Ill.

MU TAU, Carroll College, Waukesha, Wis.

NU UPSILON, Kearney State College,
Kearney, Neb.

NU PHI, Morgan State College,
Baltimore, Md.

NU CHI, Northeastern University,
Boston 15, Mass.

NU PSI, Newark College of Rutgers
University, Newark, N. J.

NU OMEGA, College of St. Teresa,
Winona, Minn.

SCARLET MASQUE CAST, Wabash College,
Crawfordsville, Ind.

PI ALPHA, Eastern Michigan College,
Ypsilanti, Mich.

PI BETA, Mount Mary College,
Milwaukee, Wis.

PI GAMMA, McNeese State College,
Lake Charles, La.

PI DELTA, Midwestern University,
Wichita Falls, Texas

PI EPSILON, Gettysburg College,
Gettysburg, Pa.

PI ZETA, Washington College,
Chestertown, Md.

PI ETA, Birmingham Southern College,
Birmingham, Ala.

PI THETA, Newark College of Engineering,
Newark, N. J.

PI IOTA, Southern Oregon College of
Education, Ashland, Ore.

PI KAPPA, David Lipscomb College,
Nashville, Tenn.

PI LAMBDA, Illinois College,
Jacksonville, Ill.

PI MU, Brooklyn College,
Brooklyn, N. Y.

PI NU, Marygrove College,
Detroit, Mich.

PI XI, Nebraska State College,
Chadron, Nebr.

PI OMICRON, Lamar State College of
Technology, Beaumont, Texas

PI PI, Converse College,
Spartanburg, S. C.

PI RHO, Friends University,
Wichita, Kansas

PI SIGMA, Mercy College,
Detroit, Mich.

PI TAU, Pennsylvania State Teachers
College, Shippensburg, Pa.

PI UPSILON, Tenn. Polytechnic Inst.
Cookeville, Tenn.

PI PHI, Springfield College,
Springfield, Mass.

PI CHI, Mississippi College,
Clinton, Miss.

PI PSI, State Teachers College at Westfield,
Westfield, Mass.

PI OMEGA, Sterling College,
Sterling, Kansas

RHO ALPHA, Pfeiffer College,
Misenheimer, N. C.

RHO BETA, State Teachers College at
Boston, Boston 15, Mass.

RHO GAMMA, Martin Branch, Univ. of
Tennessee, Martin, Tenn.

RHO ETA, Lebanon Valley College,
Annville, Penna.

RHO THETA, Paterson State College,
Paterson, New Jersey

RHO IOTA, Eastern Washington College,
Cheney Washington

RHO DELTA, Black Hills State Teachers
College, Spearfish, S. D.

RHO EPSILON, Valdosta State College,
Valdosta, Ga.

RHO ZETA, Northern Teachers College,
Aberdeen, S. D.



ALPHA PSI OMEGA KEY AND BADGES

The Balfour Bluebook

The newest edition of this complete fraternity jewelry catalog brings to you selections for gifts and personal accessories. New crested rings, bracelets, tie bars, cuff links, jewel cases and initiation gifts.

Mail post card for free copy.

L. G. BALFOUR COMPANY
ATTLEBORO, MASSACHUSETTS

Date.....

Please send:

- ☐ Blue book
☐ Knitwear Flyer
☐ Ceramic Flyers

☐ Christmas Cards

Samples:

- ☐ Stationery
☐ Invitations
☐ Programs

Name.....

BALFOUR SERVICE . . .

WORTHY OF YOUR TRUST

10% Federal Tax and any State or City Tax in addition.

PRICE LIST

Plain badge,

1/10 double rolled gold plate	\$ 4.00
Plain standard badges, 10K gold	5.00
Close set pearl badge	8.50
Crown set pearl badge	12.50
Coat of arms guard, sterling or gold plated	1.50
Coat of arms guard, 10K gold, with 1 pearl	3.00
Key, 10K gold	7.50
Key, 1/10 10K double rolled gold plate, 10K ends	5.25

For Key-Pin, add \$1.00 to price.

10% Federal Tax and any State or City Tax in addition.

HOW TO ORDER:

Regulations: All orders for keys, pledges and recognitions to come in on official slips are to be approved by: Paul F. Opp, Box 347, Fairmont, West Virginia.

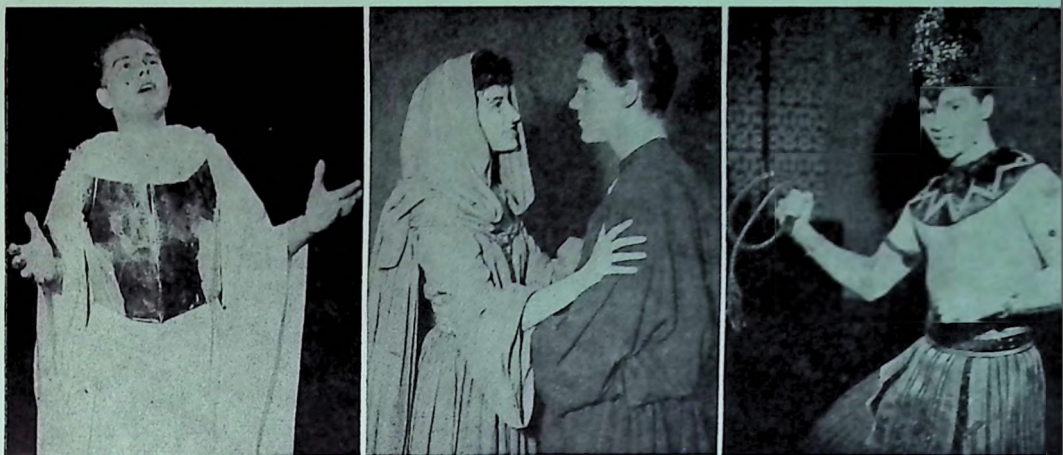
STATIONERY—PROGRAMS INVITATIONS

Samples on Request

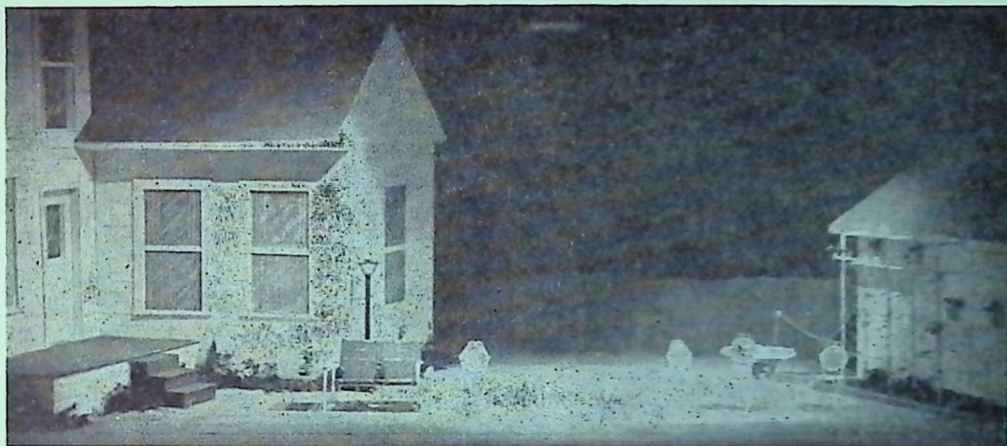
Official Jeweler to
Alpha Psi Omega

L.G. Balfour COMPANY

Attleboro, Massachusetts



(L. to R.) Harlan Ratmeyer as Michael, (center) Mary Boat and Bob Wegler, (left) Bob Brodersen as Pharoah in the religious drama "Go Down Moses," a first U. S. production of the play by Central College, Maurice Birdsall, director.



Setting for "ALL MY SONS," Dr. Rosemary Owens, director, East Texas State College. Set designed by Clarence Strickland.



(L. to R.) Meredith Greenfield, Jim Redeker, Dave Loynachon, and Bob Brodersen in the old-fashioned melodrama, "Only an Orphan Girl," Central College, Prof. Maurice Birdsall, director.



a specialized costume rental service for:

- Schools • Colleges • Little Theatres
- Church Groups • Lodges • Clubs
- and all other non-professional groups

"Send name and date of production for free description or illustrated plot and estimate now—reasonable rental prices."

WIN up to \$1,000.00

send for complete information on the
ANNUAL EAVES AWARDS

EAVES BONUS PLAN gives you
FREE THEATRICAL EQUIPMENT as a no-cost bonus!

EAVES COSTUME COMPANY, INC.

Eaves Building

New York 19, N. Y.

151 West 46 Street
Plaza 7-3730

FAIRMONT PRINTING & OFFICE FURNITURE COMPANY