



The PLAYBILL



ALPHA PSI OMEGA

19



58



TABLE OF CONTENTS

* * *

Clarifying The Method and "The Method"	3
By James H. McTeague	
Why Not Tour a Religious Play	5
By Maurice Birdsall	
Easter Pageant Becomes a Tradition	7
By Nancy J. Fry	
Theatre Service for a Community	9
By Jayclyde Bacom and Corleene Hammond	
Alfred Tech Makes Summer Tour	11
By Mort Clark	
More Shakespeare Experimentation	12
Stock Pavilion Becomes "A Globe" Theatre	
By Roland Schultz	
"Much Ado" in Modern Dress	
By Rev. Richard A. Richards	
The Founder of A Famous Shakespearean Festival	15
By Dorothy E. Stolp	
Committee of A.E.T.A. To Make Eaves' Award	16
College Observes Silver Anniversary	17
By Subert Turbyfill	
Plays at Special Royalty	18
What the Member-Colleges are Doing	19
Chapter Directory	46

COVER PICTURE

Scene from "TEAHOUSE OF THE AUGUST MOON", Hartnell
College, Salinas, California, Mr. Harold Ulrici, director.



The PLAYBILL

A Publication Devoted to College Plays
And How to Stage Them

1958

A Year Book of College Dramatics
DR. PAUL F. OPP
Editor



Caroline Browder as Liza in Shaw's "Pygmalion",
Florida Southern College, directed by Vivian
Fusillo.

LEFT—

Top: Linda London as Kate, and Dick Durbin as
Petruchio in "The Taming of the Shrew", directed
by Vivian Fusillo.

Below: "The Silver Cord", (final curtain), Caroline
Browder as Mrs. Phelps; Tim Minar as Robin.
Florida Southern College, Vivian Fusillo, director.



Sherry Wright as Lotus Blossom and Richard Blount as Captain Frisby in "Teahouse of the August Moon", directed by Lance Goss, Millsaps College production.—Photo by Alton Boyd

The PLAYBILL

Published Annually

ALPHA PSI OMEGA DRAMATIC FRATERNITY

Dr. Paul F. Opp, Grand Business Manager,

Box 347, Fairmont, W. Va.

Address Communications to Business Manager

The purpose of THE PLAYBILL is to afford college and university dramatic organizations opportunity to acquaint themselves with what is being done by their contemporaries and to serve the Fraternity as an official organ.

CLARIFYING THE METHOD

AND "THE METHOD"

by James H. McTeague, Alpha

A subject of considerable controversy in the modern theatre is **The Method**, but before you throw up your arms and decry for or against **The Method**, let us briefly examine what is meant by **The Method** and the method. The principal source of material for the basic concepts of **The Method** is Stanislavsky's **An Actor Prepares**, an amazingly simple system that actors might use in preparing themselves to comprehend the difficult emotional "inner life" of a character. The theatre is eternally grateful to Stanislavsky's friends and associates who urged him to publish this book; since, for the first time, it gave a completely penetrating picture of what is desired in an actor, and more important, it gave a codified, creative, and constructive method of obtaining a very intangible element—dramatic imagination. This dramatic imagination was suggested as the result of extensive cultivation of concentration, emotional recall, relaxation, and other terms that might confuse a layman, but were to cause a revolution in acting.

Stanislavsky was aware that he had said nothing new. In fact, he gave voluminous credit to other actors, directors, and associates for much of his philosophy. However, Stanislavsky accomplished what Talma, Fanny Kemble, Coquelin, and, among the moderns, Louis Calvert ultimately failed to do; interpret acting in a functional, clearly defined practical manner. **An Actor Prepares** is a brilliant expression of the concept of acting. It states very simply, what many actors have been attempting to say for nearly two hundred years. Few actors and directors have had the temerity to deny Stanislavsky's fundamental philosophy on acting. Many have disagreed with the concept of "living the part." Toby Cole has accomplished a masterful coup in his **Actors on Acting**, which gives needed illumination to the thoughts of the great and not so great actors and actresses on the question of "living the part." Stanislavsky, a great

*Mr. McTeague is Assistant Professor of Speech and Dramatics. He is a graduate of School of Drama, (MFA), Carnegie Institute of Technology.



Cast and setting of "The Traveling Lady" by Horton Foote, directed by Don Tornquist, Augustana College, Rock Island, Ill.

scholar of the theatre as well as a great actor and director, codified the philosophy of acting, so that it might be readily available to those who were seeking to express themselves through acting.

The approach that Stanislavsky suggested was through cultivation of our emotions through a definite control or mastery of them. He is quite definite that untrammelled emotion is not the answer to a creative imagination, but, on the contrary, an awareness of our ability to guide and control the emotion is the answer. **An Actor Prepares**, then, is something like an emotional primer, it aids the actor in discovering the deficiency of his capacity and then, shows him how to use his emotions constructively, imaginatively, and creatively.

At this point, the actor, let us assume, has the emotional capabilities to become an accomplished, sincere, and an effective performer. He is necessarily introspective, since he has concentrated his efforts on the emotional "inner life." The Method has stopped the development of the actor at this crucial point. The present day Method has left the realm of its conception. The Method actors have lost contact with the "realities" of the theatre in their search for the realities of life. In other words, the present day actors are preoccupied with gleaning only the minute details from the bones of life and presenting them undigested, to an audience. This is The Method.

Stanislavsky, however, did not stop here. The point is, that Stanislavsky realized all too well, through his own experimentation, that actors are quite prone to dwell on the introspective. "To feel is not to act," said Stanislavsky. Emotion, without the equipment to project it effectively, is not creative acting.

It seems that Method people forget that Stanislavsky's initial idea was to combine the internal elements with the external elements of acting. His oft-forgotten **Building the Character**, was a book which discusses the external techniques, and was designed to be the companion **An Actor Prepares**. It was only because of pressing circumstances that the two books were not one. This does not mean that he wanted to diminish the importance of the



"Dark of the Moon", Jane Kissling (witch girl), Thomas McKee (witch boy), Northeastern Univ., Boston, Prof. Eugene J. Blackman, director.

emotional aspect of acting, far from it. Stanislavsky, wanted **Building a Character** to bulwark **An Actor Prepares**.

It must be admitted that the material in **An Actor Prepares** is of greater importance. It is the basis, the blood of acting.

The distinction between the method of Stanislavsky and The Method then, is this: The Method denies or ignores the need for the "external" techniques for actors. The result of this lack of complete development in the Method actor is the present-day type of introspective acting. Acting, that no longer elevates, but lowers the audience. It seems that these actors are more interested in "scratching believably" than in enriching the audience. They seem interested in the conversation on stage to the extent that the audience has difficulty in hearing it. They overwhelm the audience with so much unnecessary small detail that eventually the basic nature of the character is completely submerged. What is needed is some reliance upon technique, as well, and Stanislavsky would be among the first to assert as much.

WHY NOT TOUR A RELIGIOUS DRAMA?

by Maurice Birdsall, Alpha Zeta

* * * * *

College and church audiences are becoming more and more interested in modern religious drama, and this fact was convincingly demonstrated to the director and players of Central College, Pella, Iowa, this past season when we toured 7500 miles over weekends and vacations

with "Christ in the Concrete City". We played for 45 different church groups in nine states from Iowa to New York. This hour long religious play in blank verse by Phillip W. Turner played for audiences that ranged from country churches in the Mid-West to the young adult group and its guests in Marble Collegiate Church in New York City and for such large assemblies as the national meeting of the Education Division of the National Council of Churches in Omaha and the meeting of the General Synod of the Reformed Church in America at Buck Hill Falls, Pa.

"Christ in a Concrete City" played to responsive audiences because the script is articulate and meaningful to people everywhere. The theme of the play is that Christ was crucified both by us and for us. The play takes the events of the last days of Christ on earth from the betrayal in the garden to Mary's meeting Jesus on Easter morning. In addition, it comments on these events and shows us how they affect our lives today.

The play requires no settings, and the costuming is symbolical rather than actual. In our production the six members of the cast sit on stools behind music racks containing the script and talk directly to the audience. For the actual historical scenes the actors move down in front of the stools and play the scene. They then return to their seats and comment directly to the audience on the meaning of the historical event. Each member of the cast except the narrator plays eight or nine characters during the performance. They dress in modern costumes representing typical U.S. citizens. During the flashbacks to Biblical times a shawl or a piece of material is draped over the shoulders, on their heads, around the waist, or over their arms to suggest the dress of the day. The color of the material varies with the type of character they are portraying. Organ music was used twice in our production, beginning with a cacophonous modern theme and closing with the



Parts in the crucifixion scene were played by Robert Noler, Gwen Venden Berg and Joyce Bennett, "Christ in a Concrete City," directed by Maurice Birdsall.

triumphant music of the resurrection.

The experience of the past season convinces us that people across the country are anxious to see modern religious drama. We were asked to play nearly twice the number of dates that we booked. We could not accept every request because each member of the cast was carrying a full academic load and Alpha Psi felt it could not impose too much upon time for study. We will book a number of places we had to pass up last season and shall try to fill many of the requests for return engagements, providing we can find another effective religious play to send out during 1958-59. Nearly 80% of the places we played last year asked for return engagements. I would like to suggest to directors in college theatres, especially those in church related schools that a religious play be added to your productions during the current season. If you do, you will find it a rewarding and inspiring adventure.

NOTE—Copies of the play "Christ in the Concrete City" and permission to do it and royalty rates may be secured from The Religious Drama Society of Gr. Britian, 166 Shaftsbury, W.C. 2. London. The play, written by an Anglican minister was intended to take the message of the church to the common people of England who were not attending church. It was played professionally for five years before it was released for production in the fall of 1956.

The professional acting company hired to present the play was called The New Pilgrim Players. It was staged in churches, school auditoriums, and even manufacturing plants. It was one of the plays presented at the World Religious Drama Conference at Oxford in 1955.

Late Bulletin: Copies of "Christ in the Concrete City" may be secured from the U. S. Agent, Mr. Robert Seavers, 3041 Broadway, New York 27, N.P. 85c per copy; Royalty, \$15.00.

Colleges touring religious dramas:
Iowa Wesleyan College, Chapel Players, Mt. Pleasant, Iowa.
Louisburg College, Louisburg, N. C. "Paul, the Christian Prisoner", Ruth N. Merritt, director.
Endicott Jr. College, Beverly, Mass. Robert J. Sanborn, director. "Peace at Bethany", "Everyman", "Job", and "Martha and Mary".



Scene from Eugene O'Neill's "Ah Wilderness", McNeese State College, Lake Charles, La., Margery Wilson, director.

Easter Pageant Becomes A Tradition

by Nancy Fry

An Easter dawn pageant has become a tradition at Mary Hardin-Baylor College, Belton, Texas, and 1958 marked the 19th annual performance of a production that has become so significant that hundreds of Central Texans make annual pilgrimages to observe the event. The pageant is a reverent portrayal of Christ's last days on earth, and the first of the thirteen scenes, Christ's Triumphant Entry into Jerusalem takes place outside the iron gates of the campus, and most of the other scenes take place before or on the steps of various campus buildings. The script was completely revised this season, adding more narration and pantomime. Mrs. Bonnie Hedges wrote a plain hymn which was used to close the scene of the "The Last Supper". This hymn was sung by Mary Hardin-Baylor campus boys, and all the music used was tape-recorded.

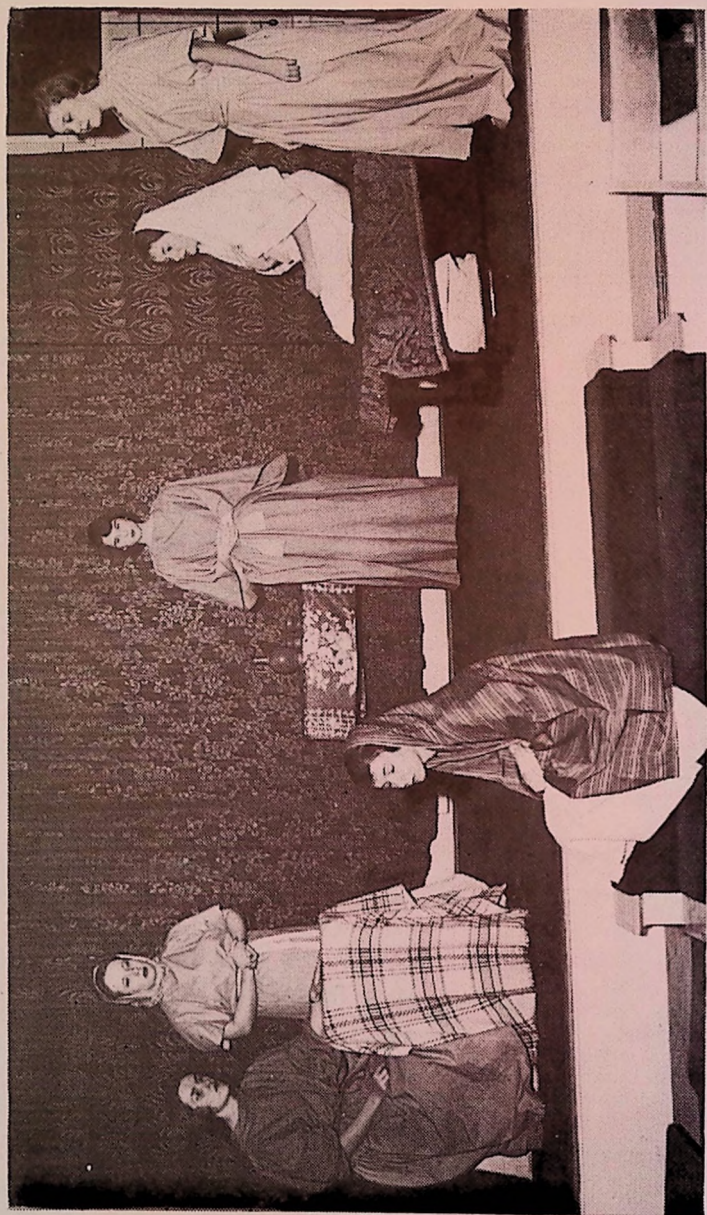
Miss Nancy Fry was director in charge of the production; Randy Carter was student-director, and Miss Tommye Sartain was narrator. Kathy Jacobs was chosen by students and faculty to portray Christ, and Joyce Williams was cast as Judas, one of the most difficult roles in the pageant.



TOP—Resurrection scene, Easter Pageant, Mary Hardin-Baylor College.

RIGHT—Christ's Triumphant Entry into Jerusalem, the opening scene of the 19th Annual Easter Pageant at Mary Hardin-Baylor College. This scene begins at the iron gates of the 113-year-old college. The cast proceeds to the outdoor stage on the campus for the remaining twelve scenes.





Fourteen showings of "Peace at Bethany" by Joan Brockelsby were staged in Massachusetts and New Hampshire by The Endicott Players, Endicott Jr. College. Prof. Robert J. Sanborn, director. From L. to R.: Ruby Saunders, Annette Lawrence, Joan Robbins, Linda Jeffers, Fran Davenport, and Roma Wright.

THEATRE SERVICE TO A COMMUNITY

by Corleene Hammond and Jayclyde Bacom, Theta Kappa

Members of the San Francisco State College Cast interpret their oath of membership to be a pledge of service and usefulness that goes beyond their college campus to a world community. The San Francisco State College Drama Department has a theatre and facilities the equal of any college or university in the nation, and when theatre students have attained Alpha Psi Omega membership they have had such a wealth of acting and production experience that they are ready to undertake any project that the community may offer. During the past season, for example, the theatre department under the direction of Dr. Fenton McKenna, has had a rich and varied program of classics, popular shows, an opera, and three children's theatre classics, plus a summer Shakespearean festival. Two of the major productions, "Guys and Dolls" and "Teahouse of the August Moon", were directed by Dr. Clarence W. Miller with Alex S. Flett, technical director. Dr. Miller and Mr. Flett are faculty advisors.

Aside from doing their share of acting, members have designed all the sets for the children's productions. Another member designed the arena-staged, "Antigone" and gave a splendid performance of Creon in the same play. Alpha Psi Omega members took full responsibility for working out the dance numbers and the narration for Dr. Wendel Otie's original production of "Westward, the Tide", and they also co-directed the large, all-student variety show.

We are proud that the City Convention Bureau and city officials have confidence in the near-pro-



Dr. J. Fenton McKenna, Executive Director of San Francisco State College Theatre

fessional skill of our members when some project needing theatre know-how arises in the Bay-area. Thus reaching out beyond the college theatre, our members have utilized their collective talents to contribute to a wide variety of community service. Our chapter president, assisted by members, acted as producer-director of "Scout-O-Rama", a scouting jamboree built along a Western theme and presented at San Francisco's famous Cow Palace.

Another chapter officer directed the religious play, "The Sign of Jonah", for a local church, and other members participated in dramatic events in



Scene from "Guys and Dolls", Dr. Clarence W. Miller, director; Alex S. Flett, technical director, a San Francisco State College Theatre production.

the 1958 national convention of the National Red Cross. The latest venture is the collection of books to be sent to India. Two members have the distinction of being part of a Phi Beta musical revue entitled, "I Want a Man", which has been touring West Coast Army bases this summer and has been selected for an overseas tour of the Far East this summer.

A member who has brought outstanding honor to our cast this year is Bob Ackerman, who was one of fifteen actors in the United States to be selected as a Ford Foundation Fellow for the Cleveland Playhouse project. Bob will spend two years in residence, getting advanced training in the professional theatre. In our theatre this season Bob played leads in "Noah", "Danton's Death", "Antigone", and "Tartuffe".

The past year has been one of continued growth and achievement, but notably and most important this has been a year of expansion and usefulness in community service to a wide, wide community which has gone out as far as India and the Far East and as near at hand as our own college children's theatre.

NEW PLAY PRODUCTION TEXTS

PLAYS FOR PLAYERS, and **Play Production Guide**, prepared by Verne Powers, Row, Peterson and Company, 1957, Evanston, Ill. Since this book contains the texts of a variety of one-act plays with an extensive treatment of every phase of production: scenery, lighting, properties, costumes and make-up, it will fit in with every instructor's class techniques if he emphasizes the creative impulse. Experience is provided with every type of play from farce to poetic tragedy. None of the fundamentals of design and staging are overlooked.

HERE'S HOW! A Basic Stagecraft Book by Herbert V. Hake, (128pp.) 1958, Row, Peterson and Company. This is a splendid workbook for the play production or workshop course. The copious designs and illustrations, provided by the author, are detailed and thoroughly practical. Nothing is more effective in constructing sets and properties than the helpful drawings which are an outstanding feature of this work. The inclusion of the problems of arena staging brings this workbook up-to-date.



Vern Knight as "Christy Mahon" in the Hillsdale College production of Synge's "The Playboy of the Western World." Professor George H. Hale, director.

ALFRED TECH MAKES SUMMER TOUR

★ ————— by Mort Clark ————— ★

The Alfred Tech Drama Department, that made an extensive summer tour of Army bases in England, France, and Germany last summer, turned Westward for the summer of 1958. After presenting "Macbeth" at the National Thespian Conference at Purdue University, our company crossed the Mississippi and on to Ft. Sill, Oklahoma where we did "Ah, Wilderness" and "All My Sons" in Arena style; all other performances during the trip were on proscenium stages. Our next engagement was at Sandia Base, near Albuquerque, and from there to Los Angeles where the Chapel

Players, Manhattan Beach, sponsored our performance. After paying a visit to Mexico, we traveled to Brooks Army Medical Center, Fort Sam Houston, Texas. We spent one afternoon doing ward shows and skits for patients and did a workshop in acting, make-up, and directing for special service personnel. At Ft. Polk, Leesville, La. we did three workshops and our shows enjoyed our largest audiences of the trip. On the return trip to Alfred, we stopped at Gatlinburg, Tenn. to see the historical play, "Chucky Jack", and stopped at Hazelton, Pennsylvania to do one of our shows for the Hazelton Thespians for a scholarship project.



Walter R. Martin, Leonidas Lagakos, and Susan Cole in the Hillsdale College production of "Sabrina Fair."
Professor George H. Hale, director.

MORE SHAKESPEARE EXPERIMENTATION . . .

Numerous reports within the circles of our own organization show that Shakespeare was not of an age but for all time. This issue of Playbill reports a production of "The Taming of the Shrew", directed by Mr. Ralph J. Holly of Arizona State College in Western costumes: squaw dresses for the women and cowboy boots and ten-gallon hats for the men. Nothing in the play was changed. The two following articles by Prof. Schulz of Texas Tech and Father Richards of Assumption College concerns other lively experimentation in style and technique.

A LIVESTOCK PAVILION BECOMES

A "GLOBE" THEATRE

by Roland Schulz, Tau*

The inclusion of a play by Shakespeare in the annual drama program at Texas Tech, Lubbock, Texas, is an established tradition. The spring production of "Macbeth" in April, 1958, was an experimental effort in the style of staging. By constructing an Elizabethan stage in the Livestock Pavilion of the campus it was possible to produce

the play in a setting remarkably resembling the Globe Theatre for which Shakespeare wrote. By utilizing the architectural similarities of the Pavilion to the Globe, it was possible to use platforms, balconies, window stages, and playing areas available to the Elizabethans, and we were able to recapture more readily the spirit of the play as Shakespeare must have intended it. The use of the separate stage areas encourages a communicative intimacy between actors and audience and provides the smooth flow and continuity between scenes that the plot of the story suggests, and at the same time, helps to suggest the transitions of time and place between the scenes.

Simplicity prevailed in every phase of the production and was more effective than luxuriance in lighting and costuming. Only the minimum of furnishings and properties, needed to illustrate the dialog and action of the play, were used. Since Shakespeare performed his plays in daylight, no special lighting effects were needed. Natural lighting was used for the matinee performance, the light coming from the windows of the Pavilion, as

*Prof. Schulz is Chairman of Dept. of Speech, Texas Technological College.

CURTAIN CALL FOR "MUCH ADO"

Assumption College
Rev. Richard A. Richards,
director

l. to r.

Anne Marie Nadeau
(Beatrice)

Paul Archambault
(Benedick)

Charles Paquette
(Claudio)

Mary Dauphinais
(Hero)



it did from the Globe's unroofed pit, and lighting for the evening performances simulated daylight. All in all the Livestock Pavilion proved ideal for this experimental project, and the Department of Speech owes a debt of gratitude to the Department of Animal Husbandry for the use of it.

A feature of the summer drama program at Texas Tech is a Speech department theatre tour

that enables about twenty students to study theatre facilities and see productions at drama centers like Denver and Los Angeles, see more Shakespeare at the Ashland, Oregon, Shakespeare Festival and the Globe Theatre, San Diego. The tour includes other educational theatres like the University of Washington Penthouse Theatre in Seattle. The 5,000-mile tour is a coverage of every variety of educational, professional and summer theatres available in the great West.

★ ★ ★ ★ ★

"MUCH ADO" IN MODERN DRESS

by Rev. Richard A. Richards

For their second production of Shakespeare in recent seasons, the Genesians of Assumption College, Worcester, Mass. staged "Much Ado About Nothing" in modern dress by presenting Benedick as a United States Army Captain and Dogberry as a small-town police chief. The project proved that Shakespeare "was not of an age but for all time". The patio-type staging was in keeping with the concept of the play as a house-part comedy, and the lighting, thanks to recently acquired dimmers, was flexible enough to permit a smooth flow of scenes. Costumes were simple twentieth century with the military uniforms blending with informal

civilian fashions. The girl's gowns, especially for the wedding scene, were tasteful and colorful.

As in any production of Shakespeare, "the play's the thing", and the direction requires just the right touch, alternating, gusto with restraint as called for by the play. The young lovers, Hero and Claudio, are overshadowed in the performance as in Shakespeare's script by the witty, bickering pair, Beatrice and Benedick. Benedick, the devil-may-care misogynist, if played to the hilt, can carry most of the cast along with his enthusiasm and characterization. The play even has its scene-stealer, Don John, the slick, mustachioed, cocktail-guzzling villain.



Julian Dey as Shylock in "The Merchant of Venice", directed by Irene C. Arnett, LaGrange College Curtain Raisers.



Miss Jo Anne Tiegs, College of St. Teresa, and Mr. Richard Orsinger, St. Mary's College in "Much Ado About Nothing", Mr. John Marzocco, director.



Bunny Cowan as Andromache, Jack Taylor as Ajax, Don Lisle as Hector, Melanie Matthews as Cassandra in the Millsaps College production of "Tiger at The Gates" by Jean Giraudoux, directed by Lance Goss.—Photo by Alton Boyd.

THE FOUNDER OF A FAMOUS SHAKESPEAREAN FESTIVAL

by Dr. Dorothy E. Stolp, Pi Iota*

Members of our national honor society in college dramatics may someday wish to attend a performance at the Ashland Shakespearean Festival. The founder of this world-famous festival, Mr. Angus L. Bowmer, was recently honored with Alpha Psi Omega membership. Professor Bowmer has been a member of the Southern Oregon College faculty since 1931 and has directed many campus productions. He has been producer-director of the festival since its founding in 1935. He became interested in Shakespeare production during his graduate days at the University of Washington while working with B. Iden Payne, veteran producer of Shakespeare, who advocated and inspired his students to stage Shakespeare as his plays were staged in Elizabethan times.

After Mr. Bowmer came to Southern Oregon College, he produced several Shakespearean plays on the college's traditional stage, but he dreamed of the day when he could produce them on an Elizabethan stage. One day, when he was walking in Ashland's Lithia Park, he was struck by the resemblance of the remains of an old Chautauqua

shell to the walls of the theatres of Shakespeare's day. He could visualize an Elizabethan stage on one side of the enclosure, and he went about trying to make the vision come true. With the support of the college and community and with WPA funds, an Elizabethan-type theatre was constructed and Shakespeare's *Twelfth Night* was put into rehearsal for opening night, and *The Merchant of Venice*, which had been produced at the college, was revived as a companion piece. America's first Elizabethan theatre was opened to the public July 2, 1935 with a cast and staff made up of people from the college and community. Three performances were given.

Shakespeare was popular with theatre patrons from the beginning, and the second season a third play was added. The fourth season featured four plays and a pattern of production was established. Patrons could then "stay four days—see four plays." During the fourth season the festival was incorporated, and the first festival broadcast over

*Dr. Stolp is a member of the Speech Dept., Southern Oregon College.



Prof. Angus L. Bowmer, (An after-rehearsal talk) "Dangerous Corner" by J. B. Priestly. With him are Molly Walker, Audrey Hite, Carolyn Schoenberg, and Nancy Davies.

NBC was made. The company also made an appearance at the World's Fair in San Francisco. The Ashland Festival became known nationally. Unfortunately, the stage area caught fire and all costumes and properties were destroyed at the end of the 1940 season. Since World War II seemed imminent, the board of directors invested the festival assets in war bonds and closed the theatre until after the war. In 1947, after returning from military service, Mr. Bowmer and the board set about reviving the festival; and in reconstructing the playhouse, they used the existing plans of an Elizabethan theatre, the Fortune.

The Ashland Shakespearean Festival is unusual in that it is one of the few theatres to present all of Shakespeare's plays. Productions are planned ten years in advance and the history plays are given in chronological order. The season has been extended until it now runs six weeks. (The 1958 season was from July 28 through September 4.) The facilities have been expanded and improved and plans are in the offing for a half-million dollar plant. Actors and technicians come from all parts of the country and from England to work on the productions. Since 1951 a limited number of board and room scholarships are available and applications for them should be submitted before March 31 each year. College credit for some courses offered in connection with the festival may be obtained by enrolling through Southern Oregon College or Stanford University. A special program of short courses is offered also by the Institute of Renaissance Studies, the festival's educational program.

Professor Bowmer continues to be the producing director of the festival and occasionally acts with the company. This season he played Shylock, his eighth appearance in the role.—For his work

as a college and community director, for his stature as an actor, and for his contribution to the national theatre scene by founding the Ashland Shakespearean Festival with its high standards of production, Pi Iota Cast felt it fitting to recognize his achievements by conferring membership upon him.

COMMITTEE OF A.E.T.A.

TO MAKE EAVES' AWARD

The first of the annual awards of \$1,000.00 offered by the Eaves Costume Co. Inc. of New York City will be made December 30, 1958. The American Educational Theatre Association will be the organization assigned with the responsibility of making the award. The award shall be made each year to an individual, or group in the college or little theatre bracket. The sole criterion to be employed by the judges shall be merit, and in reaching their decision the judges may consider talent, imagination, presentation and leadership. All persons and groups active in the non-professional theatre shall be eligible. It will be taken for granted that the committee will not be aware of all deserving or significant work in production, directing playwriting, designing, composing, acting, or other artistic or promotional accomplishments unless brought to the attention of the committee through nominations or applications. The A.E.T.A. has set up a committee on awards, Mr. Lee Mitchell, Chairman. A similar award of \$500.00 will also be made to an organization or worker in the High School Theatre, and consideration will be given to nominations or suggestions for making this award. The executive offices of AETA are at the Univ. of Minnesota, Mr. Kenneth Graham, Exec. Secretary.



Scene from "The Scarecrow", Northern Illinois Unyves supervising director.

director; Mr. Dale Jeffriversity, Dekalb, Ill.; Dr. Raymond Wilderman,

COLLEGE OBSERVES SILVER ANNIVERSARY ! !

by Subert Turbyfill

We found the ideal play for the observation of the twenty-fifth year of Canal Zone Junior College in "Love is Eternal", dramatized by Ruth Sergel from Irving Stone's book-of-the-month-club novel. The story concerns Mary Todd, the girl who married Abraham Lincoln. American citizens, employees of the Panama Canal, are proud of their citizenship, and we found this play of the Dramatic Publishing Company of particular interest to them. We had found the play, but it was really the method of staging and performance that gave us the complete answer. Feeling that the problems of setting, make-up and costuming would affect the dignity of the story, for the observation of the Silver Anniversary Year; therefore, we decided to present "Love is Eternal" in an "Impressionistic table-production" with twenty-eight different players, gowned in choir robes with dark red color highlights, and using the scripts to make clear that the story was supreme.

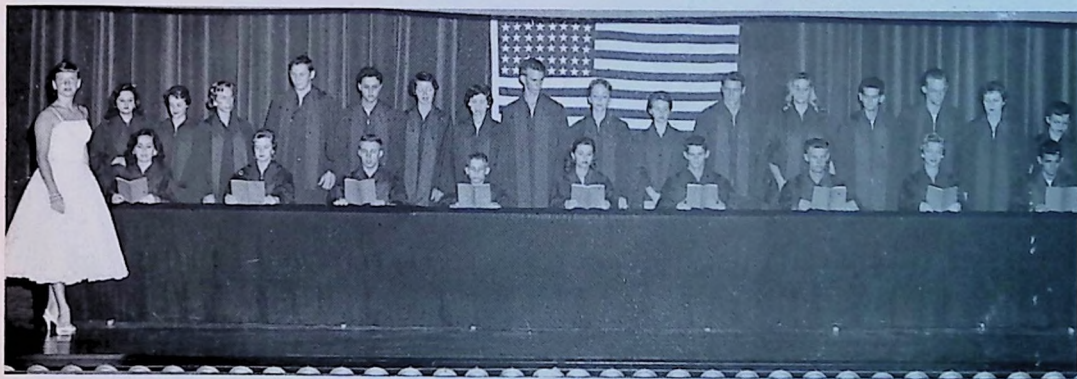
A table 30 inches wide by 30 inches high and 24 feet long was covered with black cloth down to the floor. Each player had an individual spotlight which he turned off and on when he entered or left the scene, ("left" by merely being seated). The play was completely memorized and rehearsed for effective interpretation, and it was clear to the audience that no actor was "reading" in the sense that he was hunting for words. Characters sat when they were not on stage, and stood when they were taking part in a scene. The players faced each other as the roles demanded, and modified body action and gestures helped the detailed expression of the various speeches. Extra characters were introduced in the second and third acts by having characters at the ends of the table depart after their parts were completed and their seats occupied in the dark by the new characters. The stage man-

ager, a young lady in evening gown, appeared before the play began and before each act to make all explanations, including the fact that the action of the play takes over twenty years in widely different places. Interest and enthusiasm grew as the play progressed, and many of the audience told me that they received a greater emotional uplift, a greater interest in the love story of Mary Todd and Abraham Lincoln than they ever thought possible.



Scene from "Medea", Rutgers University, directed by Christian Hamilton.

When the old traditional "make believe" type of thing begins to pale, when the college director tires of having to present really important plays which cannot be done convincingly because of the extreme demands of make-up, costuming, or scenery, I can recommend that he consider a "table production" of a really difficult drama. And I place *Love Is Eternal* high on the list.



Cast of "Love is Eternal", Impressionistic table production, directed by Mr. Subert Turbyfill, Canal Zone College.

PLAYS AT SPECIAL ROYALTY

Plays Available to Member Colleges During 1958-1959

All the principal publishers of plays have been generous in supplying a list of titles that are available to the members of our national honorary society at special royalty rates. All payments of royalty are made direct to the publisher. Directors of dramatics are advised to conduct negotiations for royalties on plays that are not on this list with the company holding the royalty rights. An agreement on the royalty should be reached before beginning rehearsals. If forms are wanted for applying for a special royalty quoted on these plays, please write to the Grand Business Manager.

SAMUEL FRENCH, 25 West 45th Street, New York City, has removed eight titles from the list published in the 1956 Playbill and added eight more for your consideration. The titles removed are BRIEF MUSIC, HARRIET, LADY IN WAITING, THE SILVER CORD, RAISING A RIOT, MAGNIFICENT YANKEE, NOT FOR CHILDREN, and AND HAPPY DAYS. Consult your 1956 PLAYBILL for the complete list of forty-two plays. The plays added and the specialty royalty rates are as follows:

	Catalogue Rates	Our special Rates
The Magic and the Loss.....	\$35	\$25
The Confidential Clerk.....	50	25
To Dorothy A Son.....	35	25
The Guest Cottage.....	35	25
The Queen's Gambit.....	25	20
The Righteous Are Old.....	50	25
Dragnet.....	35	25
The Young and Beautiful.....	50	30
Added for 1958-1959:		
The King's Standards.....	25	20
Pictures in the Hallway.....	50	35
The Square Root of Wonderful.....	50	35

WALTER BAKER CO. Boston 16, Mass. For the complete list of Baker Plays see the 1956 Playbill, page 17. The following religious plays have been added for 1958-59:

Design for a Stained Glass Window...	\$25	\$20
Spark in Judea.....	25	20
He Knew The Master.....	10	7.50
Dark Days.....	10	7.50

Row Peterson Co. Evanston, Ill.—See 1956, PLAYBILL, page 13.

The terms and conditions for special rates on the plays of DRAMATISTS' PLAY SERVICE and LONGMANS, GREEN & CO. are explained on pages 17-20 of any edition of the Playbill, 1950-1956.



Tom McKee speaks with Gordon MacRae, Curley in "Oklahoma" motion picture. Tom played Curley in Northeastern Univ. production, Boston.

ROTARY HONORS

ALPHA PSI OMEGA MEMBERS

Malcolm R. Williamson, Alpha Psi Omega member from Davidson College, was one of 126 outstanding graduate students to be awarded a Rotary Foundation Fellowship for advanced study abroad. He will study literature and philosophy at the University of Delhi, India, during 1958-59. These all-expense fellowships for foreign study have been granted since 1947 as Rotary International's contribution to furthering international good will. It was also recently announced that Dr. Merrill R. Patterson, Dean of Marietta College and Alpha Psi Omega member, has been named to the international service consultative group of Rotary. Last year three Alpha Psi Omega members received Rotary fellowships.



LaNelle Schreck and Delbert Curry in a mind-reading act from "The Great Sebastians", Central State College, Edmond, Oklahoma, directed by Leroy Hicks.



WHAT THE MEMBER-COLLEGES ARE DOING!

VERMONT ETA

Norwich University

Northfield, Vermont

The Pegasus Players enjoyed another splendid season, producing Sophocle's "Antigone" and Shaw's "Pygmalion" under the capable direction of Robert H. Newall. Rosemary Fitzgerald did brilliant performances in the leading roles of both major plays. William Gannon's acting also helped to set a new standard for the quality of the work of Pegasus Players. Six new members were admitted to Vermont Eta. Mr. John Buck was cast president, and Bryant Taggart, secretary.

DELTA UPSILON

Texas Christian University

Forth Worth, Texas

The administration of TCU has decided to establish a department of theatre. The divisions of ballet and opera will also become divisions within the Department of Theatre. Dr. Walther R. Volbach will be chairman of the new department. Mr. Cleve Hairbold of the University of Texas has been engaged to head the costume division. During the 1958-59 season Dr. Volbach will direct "The Marriage Wheel" and "Mary Stuart" in a new version of the Schiller play by Jean St. Goldstone and John Reich. Professor Henry Hammack will direct "The Importance of Being Earnest" and "The Sleeping Prince". The program will include a production of "Snow White and the Seven Dwarfs" in January, to be prepared by the Fallis Players.

ZETA

Western State College

Gunnison, Colorado

The Mountaineer Players, presented as a summer production, Cocteau's version of "Antigone", directed by Jess Gern with a non-representational setting by Martin Hatcher. Allen Snair was outstanding in the portrayal of Creon. The fall quarter play was "Little Foxes"! In the winter quarter, Prof. Gern supervised the Annual One-act Play Festival, which was held arena style in the Home-made Theatre and was seen by capacity audiences for three nights. The Plays were "The Two Pierrots" by Rostand, "Wheat Fire", directed by Leon Tilbury, and "Where the Cross is Made", directed by Shirley Skufca. Mr. Hatcher supervised the children's theatre show, which was taken on tour. Betty Jean Kelly directed "Six Who Pass While the Lentils Boil", and Judy Lorens directed "The Siege of Rhodes, Part I" which was staged in the

Arena Theatre. Bob Towse, technical director, used the drawings of the original production and the shutters and stage machinery were operated as closely as possible to the first production. The final play was "Sabrina Fair", directed by Martin Hatcher with Dr. Ted Johnson as technical director. Alpha Psi Omega cast officers were Phyllis Clark and Patty Macy.

NU SIGMA

Lake Forest College

Lake Forest, Ill.

The Garrick Players look upon "Dark of the Moon" as its outstanding play of the season, including as it did, some fine acting, and many musical and ballet selections. The other plays directed by Professor John C. Converse



Scene from "Dark of the Moon", Lake Forest College, Susan Brehmer, (Barbara Allen), Joan Kwekkeboom, Michael Dau, (witch boy), and Vada Belshaw. John C. Converse, director.

were "The Mousetrap", "Tea and Sympathy" and "The Matchmaker". The following received acting awards at the Annual Awards Banquet: Dave Umbach, Paula Ernst, Bill Perrin, Caroline Shields, Tom Brennan and Roz Chernoff. The children's theatre award went to Joan Cervenka and Caroline Shields was chosen as the senior contributing most to all phases of theatre. Cast officers were Bill Stauber, Joan Kwekkeboone and Judy Hartley.



Erma Beeson, Barbara Jones, Leta Reinhold, and Carolyn Condon in the Mazurka scene of "The Madwoman of Chailiot", Washburn Univ., Prof. Hugh G. McCausland, director.

ETA THETA

Washburn University

Topeka, Kansas

The Washburn Players presented "The Madwoman of Chailiot", and "The Silver Cord", directed by Prof. Hugh G. McCausland. The highlight of the year was "Dracula" in which our director had a leading role. Miss Carolyn Condon was presented the trophy for the best performance of the year for her part of Countess Aurelia in "The Madwoman". Carolyn worked with the Barter Theatre this summer. The season was brought to close with a reading of "The Importance of Being Earnest". Seven new members were admitted to Alpha Psi Omega at the annual banquet in May. Miss Judy Finley was Cast secretary.

THETA ALPHA

Glenville State College

Glenville, W. Va.

"Blythe Spirit", our first fall play, was taken on tour to Webster Springs, and Trent Bush directed Steinbeck's "Of Mice and Men" in a constructivist set. Professor William Coleman directed Shaw's "Misalliance" and Pirandello's "Right You Are", staging both in arena style. The short plays were a concert version of "Everyman" and a studio production of Langner's "Another Way Out". Professor Coleman wrote a verse play, "Rondo", that was given at the State Speech Festival. Alpha Psi Omega sponsored two Regional Drama Festivals for high schools. The summer season featured an arena production of "Affairs of State" directed by Rodney Bush and James White.

DELTA OMICRON

Doane College

Crete, Nebraska

The Doane Players used "Antingone" as the fall production to introduce new black antigone backdrops and other splendid new equipment for the Little Theatre on the campus. Two operas were done in conjunction with the Doane Singers. "Everyman" was done in centennial observation of the founding of higher education in Nebraska. Virginia Hastings Floyd, Chairman of the Speech-Drama Department directed all productions. Seven members were admitted to Alpha Psi Omega.

Page Twenty



Lloyd Ebel as Sakine in "Teahouse of the August Moon", Hartnell College, Prof. Harold Urlric, director.

ZETA ETA

University of Pittsburgh

Pittsburgh, Pa.

The long plays staged by the Pitt Players this past season were "Bus Stop", "Skin of Our Teeth", and "Teahouse of the August Moon", directed by Professor Michael McHale. Short plays for Senior Show were "A Phoenix too Frequent" and Noel Coward's "Red Pepper". The Christmas play was "The Second Shepherd's Play" staged in authentic medieval style in the Commons Room. A special feature this year was the instituting of the Players Studio, an experimental, student-directed laboratory theatre with all plays produced in the round. Sixteen members were the charter group of the newly chartered Zeta Eta Chapter. Chapter president is William Alvah Stewart, secretary, Ethel Sohncter.

ETA RHO

West Liberty State College

West Liberty, W. Va.

The Hilltop Players enjoyed so much success with their first TV plays from the studio of Wheeling station, WTRF-TV, that our speech and drama department will present twelve one-half hour TV shows each year. The first TV play this year was "A Cup of Tea" by Ken Parker, directed by Professor Vernon Riemer. Our major plays directed by Mr. Riemer were "Harvey" and "Dial M for Murder". Ten new members were admitted to Alpha Psi Omega. Chapter officers were George Myers, president, and June Richards, secretary.

KAPPA XI

State Teachers College

Frostburg, Maryland

After Little Theatre's spring production of "Claudia", directed by Dorothy Stone White, twelve new members were admitted to Kappa Xi Cast. Using sequenses from Gordon Jenkin's "Manhattan Towers", students from the drama department were among the five finalists in the annual College Variety Night program sponsored by the Pegasus Club of Hagerstown. Other activities were the sponsoring of a float in the annual homecoming parade and a trip to see "The Plays The Thing" at the Mountain Playhouse and dinner at Greengables Inn, Jennerstown. Marina Tuya and Jeanette Hicks received guard pins in recognition of leadership in Kappa Xi activities.



Mary Alice Schulte and Frank Strunk, "Kiss Me Kate", joint production, College of St. Teresa and St. Mary's College, Mr. John Marzocco, director.



Sandra Winner, John Ostrander, Edward Walter, and Daniel Culhane in "Kiss Me Kate", St. Mary's College and College of St. Teresa, John Marzocco, director.

NU OMEGA

College of St. Teresa

Winona, Minn.

This was the first year that the College of St. Teresa has ever undertaken a Shakespearean production. "Much Ado About Nothing" was produced using men from St. Mary's in the male roles and directed by Mr. John Marzocco with Charles Kempster as technical director. Our musical show, "Kiss Me Kate" was jointly produced with St. Mary's College and with equally marvelous success. Eleven members were admitted to Alpha Psi Omega. Chapter officers were Miss Marian Flanagan, Miss Timmie Harrington, and Kitty Merrick.

MU RHO

Rhode Island College of Education

Providence, R. I.

This fall, the college will move to a new campus with a new theatre where the Dramatic League and Alpha Psi Omega anticipate an expanded theatre program and will play hosts to the Rhode Island Drama Festival for secondary schools next April. Last fall workshop scenes were presented for freshmen, and again at the annual party during the second semester. Professor Joseph D. Graham directed the major plays, "The Potting Shed" and "Subrina Fair". Miss Eleanor Gallogly received the trophy for the member making the outstanding contribution to dramatics. New chapter officers are Rose Vallyely, Claire Horan, and Marilyn Hunt.

ETA OMEGA

Harding College

Searcy, Ark.

"A Comedy of Errors", "An Enemy of Society" and "Night Must Fall", all directed by Dr. Edwin Hughes, were the major productions given at Harding College this year. The following cast members received acting awards for work in these plays: Carolyn Hightower, Helen Hendrix, Lany Robinson, and James Kellet. Helen Hendrix received the award for having produced the best one-act play, "A Slave With Two Faces", and Ed Snow received the best backstage worker award. Officers for next year are: Pat Forsee, Peachy Hightower, and Annette McDougald.

MU OMICRON

Memphis State College

Memphis, Tennessee

The college theatre of Memphis State College maintained its full schedule of plays, presenting "The Chalk Garden" and "Bus Stop" directed by Professor Eugene Bence. Professor Bradford White enlisted the help of the Memphis Civic Ballet in an elaborate production of "The Midsummer Nights Dream". Best actor and technical awards for the year were given to Bob Rhodes, Allen H. Bates, Anastasia Herin and Charles Bullard. Six people were awarded Alpha Psi Omega membership. Chapter officers were Blanch Pope and Martha Owen. "King Lear" is already selected for the coming year.



John Simon and Marcia Adlerstein in a new play, "This is Reath", directed by Prof. Earl Dossey, Upsala College.—Photo by Bob Gyle.

LAMBDA THETA

Anderson College

Anderson, Ind.

The college theatre of Anderson College is now the proud possessor of its own little theatre facilities in the new C. E. Wilson Library. It will seat 350. An excellent series of productions were staged under the direction of M. G. Gressman who is returning for the 1958-59 season. Six new members were admitted to Alpha Psi Omega by earning their credentials in the season's plays: "A Man Called Peter", "Shadow of A Cross" and "Antigone". Two children's plays, a religious drama and a comedy, were staged. Chapter officers were Ronnie Lougstreth and Jane Ritchey.

ETA ZETA

Upsala College

East Orange, N. J.

The Footlight Club presented four full-length plays, all directed by Prof. Earl Dossey. "This is Reath" was a science-fiction morality play by Mrs. Gladys Foster of Morristown, N. J. The futuristic set was designed and constructed by the Art Dept. of the college. The next play, Strindberg's "Easter" was received with great success. One of the most popular productions ever staged at the Upsala theatre was our third show, Moliere's "Misanthropie", which was played in full Restoration style, enhanced by an elaborate black, white, and gold set, and colorful costumes designed and made by the club. Shakespeare's "The Tempest", presented in the round, ended one of the most rewarding seasons the Upsala Theatre has ever known. Recipients of Alpha Psi Omega awards were Waldron Coon, Marcia Adlerstein, John Simon, Mildred Cella, Art Campbell, Sandra Herschli. The plays announced for next year are "Billie Budd", "Ring Around the Moon", "Dr. Faustus", and "The Yellow Jacket", a Chinese fantasy. Seven members were added to Eta Zeta Cast.

BETA PSI

Kent State University

Kent, Ohio

Variety was the pleasant keynote of the Kent State University Theatre season of 1957-58. Prof. G. Harry Wright directed "Teahouse of the August Moon", Prof. Earl E. Curtis followed in Nov. with "The Taming of the Shrew", Dr. Bedford Thurman directed "Lilliom" for the 13th Annual Drama Clinic, and Mr. Curtis directed "The Bluebird" which toured area schools as a children's theatre offering. Dr. Thurman selected "Hedda Gabler" for Studio Theatre presentation, and Prof. William Zuchero directed William Inge's "Picnic" to close the regular season in May. Prof. Wright treated the summer students to a showing of Agatha Christie's "Witness for the Prosecution". A student-direction project was a series of one-act plays and "Desire Under the Elms". Officers for the year were Joy Goodman and Carolyn Mazzatenta.

IOTA RHO

Coe College

Cedar Rapids, Iowa

The Coe College Theatre, directed by Jeanette Ringland, presented "The Italian Straw Hat" by Labiche and "Glass Menagerie". Mr. Bruce Kellner designed the costumes and sets, and will direct the first show of the current season of 1958-59. Shaw's "Arms and the Man" has

been tentatively selected and an evening of experimental theatre will be done later. Five new Alpha Psi Omega members were admitted. Chapter officers were Maryanna Dickinson and Mary Lou Pazour.

MU PI

Creighton University

Omaha, Nebraska

The proceeds of the third annual variety show sponsored by Mu Pi Cast furnished the first contribution for the construction of a new campus theatre for Creighton University. Mr. Harry Langdon, faculty director, staged a stylized production of the old melodrama "East Lynn" and an original mounting of "Bridgadoon" on three stages utilizing two scrims. These were all attended by packed houses. Workshop productions included nine one-acts. Two events are scheduled for the summer, a children's theatre production of "Sleeping Beauty and an evening of highlights from musical comedies. Many of our Alpha Psi Omega members are employed as union workers on Omaha's three TV outlets and others participate in Omaha's two community theatres. Mr. Langdon will be working next year on his doctorate at the University of Iowa. Cast officers for '58-'59 will be John Fogarty, Walter Molden and Rosemary Sulter.

THETA GAMMA

Lagrange College

Lagrange, Ga.

The first play of the Curtain Raisers' season was "Mrs. Moonlight". Lagrange College holds two House Parties each year, and about 100 high school seniors come as our guests for the week-end. This year, "The Seventh Veil" was our first houseparty play. "The Merchant of Venice" served as the second houseparty play, and was so successful that we plan to do a play from Shakespeare each year from now on. Mr. Sam Baker directed and produced "Picnic" in March. The Drama Department brought Cornelia Otis Skinner for the Fine Arts Festival in April. She stayed on the campus and the Curtain Raisers were able to meet her informally. The Curtain Raisers were invited to present the pageant, Pioneers of Progress, for the Association of University Women in Athens, Ga. Miss Irene Arnett directed the commencement play, "Quality Street". Four Curtain Raisers worked on summer scholarships or in summer stock: Nancy Childs, Pasadena Playhouse; Julian Dey, Gateway Theatre in New York; Charles Jones, Priscilla Beach; Nancy Gibson, Long Beach, L.I. Summer Theatre. The plays considered for the current season are "The Late Christopher Bean", "Double Door", "Dark Victory", and "The Royal Family".

IOTA PI, Our Lady of the Lake College, San Antonio, Texas, Sister Mary of Lourdes, director. "The Cradle Song" and "The Curious Savage". Short plays: "Joint Owners in Spain" and "The Flattering Word". Cast president, Katharine McMahon; secretary, Rosemary Sherwin.



John Simon, Pat Hill, and Marcia Adlerstein rehearsing a scene from "The Tempest", Upsala College, Prof. Earl Dossey, director.

DELTA ZETA

University of Dubuque

Dubuque, Iowa

The dramatics season for 1957-58 consisted of three major productions: "Peg O' My Heart" by J. Hartley Manners, "Angel Street" by Patrick Hamilton, and "Journey's End" by R. C. Sheriff, which consisted of an all male cast. These plays were all directed by Miss Janet Groh. In the spring, Alpha Psi Omega sponsored its annual one-act play contest. Each class presents a play in competition with the other classes, and awards are given. The film "Oedipus Rex" was shown on campus, and was very successful. We had one spring initiation bringing in eleven new members. At the annual Honors Convocation, Alpha Psi presented trophies to the best actress of the year, Dolores McNabb, and the best actor of the year, Mike Weatherbee.

DELTA XI

Rensselaer Polytechnic Institute

Troy, New York

The Rensselaer Polytechnic Institute Players will celebrate thirty years of college theatre this season, and the first play this year will be its 100th production. The occasion will be observed with suitable ceremonies. Our 1957-58 productions were most successful: "Darkness at Noon", "Love Rides the Rails", and "Six Characters in Search of An Author". Professor Morris Koffman contributed with excellent directing, and the science-minded students of R. P. I. were especially excited and impressed by "Darkness" and "Six Characters". Nine new members were admitted to Alpha Psi Omega.

ZETA GAMMA

Simpson College

Indianola, Iowa

The Blackfriars of Simpson College staged "Hamlet" and "The Curious Savage", directed by Mrs. Paul A. Merkle. Ninety percent of a class of fifty motivated by a study of "Hamlet" in speech class saw the performance as compared with fifty percent of a control group not so motivated. "Goodnight Please" by James Doggett was presented with several student-directed scenes from modern plays. Six members were admitted to Alpha Phi Omega. Miss Mary Ann Bullis was chapter president.

NU BETA

Parsons College

Fairfield, Iowa

The Parsons Players presented "Our Town" by Thornton Wilder as the major spring production. Professor Jerald A. Cunningham directed this play and "A Phoenix too Frequent" which was taken on tour to surrounding high schools during April. An Easter pageant was presented with the music department. Alpha Psi Omega members directed a program of one-act plays in December. "Auto Da Fe", "The Constant Lover", and "Fog", and a class in play production staged a two evening play festival in March, presenting "Illuminati in Drama Libre", "Even Exchange", "Hearts", "If Men Played Cards As Women Do" and "A Pair of Lunatics". Cast officers were Celia Harvey and Marge Breon.



Joy Anne Cuoco as Sabrina in Dominican College Players production of "Sabrina Fair", Sister Mary Joanna, O.P., Ph.D., director; St. Mary's Dominican College, New Orleans, La.

NU XI

St. Mary's Dominican College

New Orleans, La.

According to the theatregoers, the past season of The Dominican Players was superior and professional. Sister Mary Joanna, Ph. D. directed the comedy hit, "Sabrina Fair" and "The Barretts of Wimpole Street". "The Dust of the Road" was given during the Christmas season, and a workshop of one-act plays was presented by Joy Ann Cuocco, Mary Virginia Berdou, and Janet Bagnetto. The Lourdes Centennial Program was also a highlight of the season, and a Shakespearean Festival featured scenes from some of the Bard's most popular works. "Sabrina Fair" was taken on tour during the summer.

KAPPA THETA

Central Michigan College

Mt. Pleasant, Mich.

Dr. J. Allan Hammack, technical director of the college theatre, directed "All My Sons". Prof. Fred Bush, who is chairman of the Speech and Drama Dept., conducted a group of 48 students on a tour of Europe and England this summer. Among the theatre events enjoyed was a performance at Stratford-on-Avon. The other productions of the '57-'58 season were "Lilliom", and "Excursion" by Wolfson, and "The Ponder Heart" by Fields and Chodorov. Kappa Theta sponsored the annual High School Play Festival. Twenty-eight members were admitted to Alpha Psi Omega. The new officers are Earl Burley, Allen Weed, Reba O'Bryant, and Niki Pelietes.

BETA IOTA

Valparaiso University

The University Players presented "Light Up the Sky," "Anastasia", "Dido and Aeneas," "The Wingless Victory", and "Carousel", directed by Dr. Vera T. Hahn. Numerous one-act plays were produced by students in the directing classes, the lecture recitals and reading theatre were presented by seniors in the Department of Speech and Drama. The University Players sponsored two theatre trips to Chicago. "The Diary of Ann Frank" and "Long Day's Journey Into Night" were attended by a large number of students. In the spring, eight outstanding students were initiated into Alpha Psi Omega. The ceremony was followed by a banquet at which Dr. Marilyn Savason spoke on the theatre of the English Universities.

ZETA OMEGA

Woman's College of Univ. of N. C.

Greensboro, N. C.

Five major productions including a children's play to tour the state of North Carolina are the plans of the Theatre of Woman's College of the Univ. of N. C. for the current season. During this past season we received two superior ratings given at the play division of the Fine Arts Festival held at State College of Univ. of N. C. at Raleigh, using the one-act play "Hello from Bertha" by Tennessee Williams. The major campus productions were "Oklahoma", "L'Histoire du Soldat", and "Sister Angelica" directed by Professor Herman Middleton. Robert Hennon directed "The Cherry Orchard" and Maynard Freney directed "Bus Stop". The Laboratory Theatre plays were "Salome", "Talk to Me Like the Rain and Let Me Listen" by Williams, "Second Overture", "Hello from Bertha", "A Phoenix to Frequent", a cutting from "Caesar and Cleopatra", and two original plays, "My Son, Jasper", written by Ellen Acker and "The Proposal" by George Hall. Eight people were admitted to Zeta Omega Cast.

MU SIGMA

Albright College

Reading, Pa.

The Domino Club of Albright College assisted the public relations department by taking the one-act play "Aida Revisited" by Roy Irwin on a tour of the area high schools. The cast consisted of Joy Detweiler, Alan Kutner, and Eustace Renner, a student from South Africa. Director, Patricia Hostetter, staged two major plays, "The Imaginary Invalid" in November and "Pygmalion" in March. Cast secretary was Mary Ellen Wray.

GAMMA SIGMA

Cascade College

Portland 17, Ore.

The fall presentation was the comedy hit, "The Family Nobody Wanted", which was about the "international family" of Mr. and Mrs. Doss who adopted twelve children of mixed racial parentage. The spring production was "Cry, the Beloved Country" adapted from the novel by Felician Komai. It was the most moving production ever offered on our stage. The best acting awards were given to Wayne Dondurant and James Chapman. Geraldine Hess directed all productions.



Scene from "The Family Nobody Wanted", Cascade College, Miss Geraldine Hess, director.

PI IOTA

Southern Oregon College

Ashland, Oregon

Twelve SOC Players earned points for Alpha Psi Omega membership, and three faculty members were honored for their theatre contributions: Mr. Angus L. Bowmer, founder and producing director of the Ashland Shakespeare Festival; Mr. Leon C. Mulling, director of the Southern Ore. Speech and Hearing Center; and Mr. Henry E. Francis, member of the English Dept. The season's major plays were "The Caine Mutiny Court Martial", directed by Angus Bowmer; "Cinderella", directed by Dorothy Stolp with Mr. Bowmer technical director; and the "The Loud Red Patrick", given during Mothers' Weekend on the campus and directed by Dr. Stolp. The children's play was given seven performances with a double cast, locally and at Medford, Oregon, sponsored by the Association of University Women. It is estimated that about 3,000 people in the Rogue Valley saw the play. Cast officers of Pi Iota were Peter Lungreen, William Harbin, and Patsy Roberts Anglin.

DELTA CHI

Panhandle Agri. and Mech. College

Goodwell, Okla.

"Our Town" was presented this spring for Fine Arts Week and the formal opening of our newly remodeled stage and auditorium. Dr. Jack Cogdill was director. "Amahl and the Night Visitors" and "The Male Animal" were the other major productions, also directed by Dr. Cogdill. Chapter officers were Kay Johnson, President, and Ruby Ledbetter, secretary.

KAPPA ETA

Ferris Institute

Big Rapids, Michigan

During the 1957-58 season, we presented two three-act plays and two one-act plays. The fall play was "Arms and the Man" and the winter play was "Room Service", both directed by J. B. Bensich. In the spring we presented the two one-act plays, "Phoenix too Frequent", and "The Boor", directed by J. B. Bensich and student directors, Richard Rome and Richard Brown. Officers for the current year are Ed Toland, Richard Brown, and Judy Evens.

IOTA GAMMA

Cedar Crest College

Allentown, Pa.

Theatre enthusiasts found themselves in the midst of an impressive interpretation of Renaissance drama when we presented "Everyman" and "The Second Shepherd's Play" in December, directed by Dr. Constance Ruys. Second semester saw the student production of "Enterprize", a play written by Marilyn Bullock, a student, and directed and enacted by fellow students. Spring marked the climax of months of preparation when campus thespians turned their talents toward Euripides' tragedy, "The Bacchae" in our out-of-door, Greek Theatre. Students and their director made the armor by using a process similar to that of a bone surgeon. After the individual casts were fitted and dried, they were painted appropriate colors.



"The Caine Mutiny Court-Martial, Angus L. Bowmer director. Judge Advocate, Peter Lungreen, Captain Queeg, Isaac McCarley, President of the Court, Orion Hammett, Recorder, Dale Flowers, Southern Oregon College.

TRI ALPHA

Manchester College

North Manchester, Indiana

The staging of Part II of Shakespeare's "King Henry IV" was the highlight of the year's production effort at Manchester College. Two other plays directed by Professor John Baldwin were "The Crucible" and "Right You Are, if You Think You Are". The staging of a program of one-act plays gave opportunities to a large group of students. Twenty-four people were admitted to Alpha Psi Omega. Chapter officers were Bob Durnbough and Muriel Weybright.

ALPHA NU

Colgate University

Hamilton, New York

Colgate University has a newly rebuilt little theatre with some additions to the regular stage that will be suitable for Shakespearean plays. Plays produced this year were "Wurzel Flummery" by A. A. Milne and "The Fourflushers" by Cleves Kinkad. The new Alpha Psi Omega members were Richard Kopp, Phillip W. Hart, Jr. and Richard Alderman. New honorary members were Professor Herbert Hackett, his wife, Sarah Hackett, and Mr. Raymond West. Chapter president this current year is Mr. William L. Marcy, III.

DELTA NU

Florida Southern College

Lakeland, Florida

The Vagabonds of Florida Southern College play in a theatre-in-the-round designed by Frank Lloyd Wright. Director Vivian Fusillo staged "The Taming of the Shrew" and "Pygmalion", and the following were student directed under the supervision of Vivian Fusillo: "The Silver Cord", directed by Jim Connor, "Hamlet" by Jacqueline McMurray, "The Doctor in Spite of Himself" by Sara Ann Smith and "One Day More" directed by Barbara Hoppeler. Chapter officers of Alpha Psi Omega were Bob Lott and Dick Ford. Representatives of the Vagabonds attended the Southeastern Theatre Conference at Chapel Hill and Dick Tatro was hired as an equity actor at Barter Theatre and Bob Lott was hired for the cast of "Unto These Hills".

ETA KAPPA

Northern Montana College

Havre, Mont.

The Footlights Club enjoyed its first season in its new little theatre. The major productions were "The Rainmaker" and "Harvey" directed by Mr. Joe Keller. Kurt Weil's opera, "Down in the Valley" was our first opera and was jointly sponsored with the Music Dept. "The Valiant" was student-directed by Wilbur Williams. Professor W. E. Lisenby, Theatre Director, is faculty advisor of Alpha Psi Omega and Wilbur Williams and Bill Thackeray, cast officers.

KAPPA KAPPA

University of Portland

Portland, Oregon

The university theatre produced a highly successful season, presenting "The Boy Friend", "The Scarecrow", "The Cocktail Party" and "The Doctor in Spite of Himself", all directed by Professor Paul E. Ouellette, who also staged the children's theatre play, "The Emperor's New Clothes" for the Portland Junior League. This play was toured to about 25 elementary schools. An innovation that has proved very popular is a platform presentation of plays and selected cuttings that has been toured to clubs and other organizations. Seven members were admitted to Alpha Psi Omega. Cast officers were Douglas Nigh and Robert Utz.

PI XI

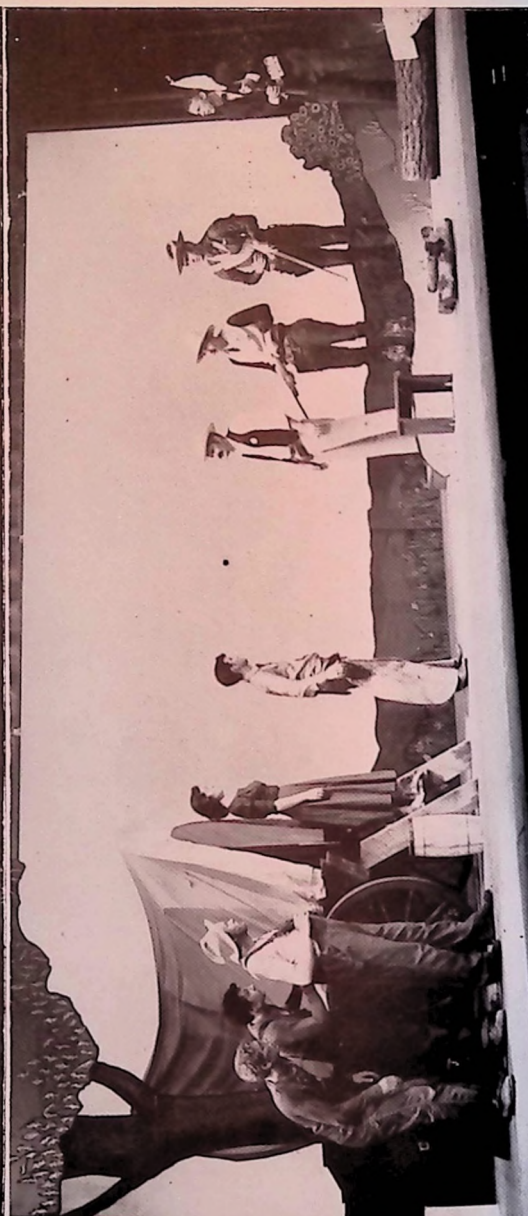
Nebraska State Teachers College

Chadron, Nebraska

The Drama Department of Chadron State under the direction of Mr. L. Neil McArthur presented during the last season "The Reluctant Debutant" and "The Madwoman of Chaillot". "The Madwoman of Chaillot" was given March 10-11 as part of the week-long Fine Arts Festival. The Pi Xi Players added a season melodrama by staging six performances of, "The Farmer's Daughter" for the Chadron College Rodeo, converting an old cattle sales ring into a theatre. A performance was also given on TV at Rapid City. Pi Xi officers were Gary Naylor and John Oster.



Scene from "The House of Bernarda Alba", by Lorca, Sam Houston State Teachers College, directed by Lynn Murray.



Top—"The Beautiful People" by Saroyan, directed by Ruth Smith, Sam Houston Stated Teachers College, Huntsville, Texas.
Below—"Roadside" by Lynn Riggs, directed by Delores Tanner, Sam Houston State Teachers College.



Carmita Hedges, in her award-winning role as Elizabeth Barrett in "The Barretts of Wimpole Street", presented by MU GAMMA cast.

MU GAMMA

Northwestern State College

Tablequah, Okla.

"The Barretts of Wimpole Street", in-the-round was something new for NSC, and was a very successful evening of entertainment. The second production was "The Drunkard". The second course in Play Production presented a program entitled "The Other Masques of Love", which included scenes from long plays, depicting four types of love. At the annual Alpha Psi awards banquet, Carmita Hedges was named Best Actress, and Onis McHenry received an "oscar" for Edward Barrett in "The Barretts". Best Supporting Actor and Actress went to Jack Evins and Sharon Fields Herron. Best Technician went to Jerry Sawyer. Arnold Dotson and Diane Shropshire were named Best one-act actor and actress.

DELTA ALPHA

University of New Brunswick, Fredericton, N. B., Canada

The University of New Brunswick Drama Society's production of "Journey's End", directed by Dr. Alvin J. Shaw was a stellar campus success and was entered in the Regional Drama Festival, winning the Calvert Regional Trophy, the Calvert Cash Award and the D. L. McLaren Trophy. Michael Gordon in the leading role also won the best actor award for the festival. Our group later received an invitation to appear in the Dominion Drama Festival. Professor Shaw directed "The Seven Year Itch" and Mr. Stephen Fay directed Ibsen's "The Master Builder". Eight members qualified for Alpha Psi Omega membership. Chapter officers were Michael Gordon and Noreen Keith. The productions planned for the current season are "The Moon is Blue" and "A View from the Bridge".



"The Glass Menagerie", directed by James Hodges, Lindenwood College. (Diane Floyd and Don Grimes)

PSI

Lindewood College

St. Charles, Missouri

During the 1957-1958 season Psi Cast has presented "The Glass Menagerie," "Jane Eyre," "Hay Fever," "Miranda," and scenes from "Richard III," "Merchant of Venice," and "Hamlet". Both proscenium and arena styles were employed. A new theatre, suitable for both forms, has been provided in the parish hall of the new college chapel. A group reading of CHRISTMAS CAROL given and there were also two individual recitals. Two queens, Victoria and Cleopatra, were subjects for dramatic interpretation. Julie Orr is president-elect. Robert Douglas Hume continues as director, and he and Juliet Key McCrory are cast sponsors.

IOTA SIGMA

State Teachers College at Towson

Baltimore 4, Md.

Many new features were added to The Glen Players productions this year. First was colorful staging of "The Skin of Our Teeth" with music, dancers and combo added to Act II. Second we employed a guest star Aline McMahon to act with the students in "The Corn is Green"; and third, arena staging, new to most of our audience was used for "Picnic" and was extremely appreciated and enjoyed. Professor William C. Kramer enjoyed his most successful year in his direction of productions. "Aria da Capo" was directed by Bruce Johnson and was our entry in the District of Columbia One-act Play Contest. Plans for 1958-1959 include sponsoring a film series, participation in the District of Columbia contest, and a production of "The Wizard of Oz" to tour the elementary schools in the Baltimore area. Cast secretary was Margaret Sakers.

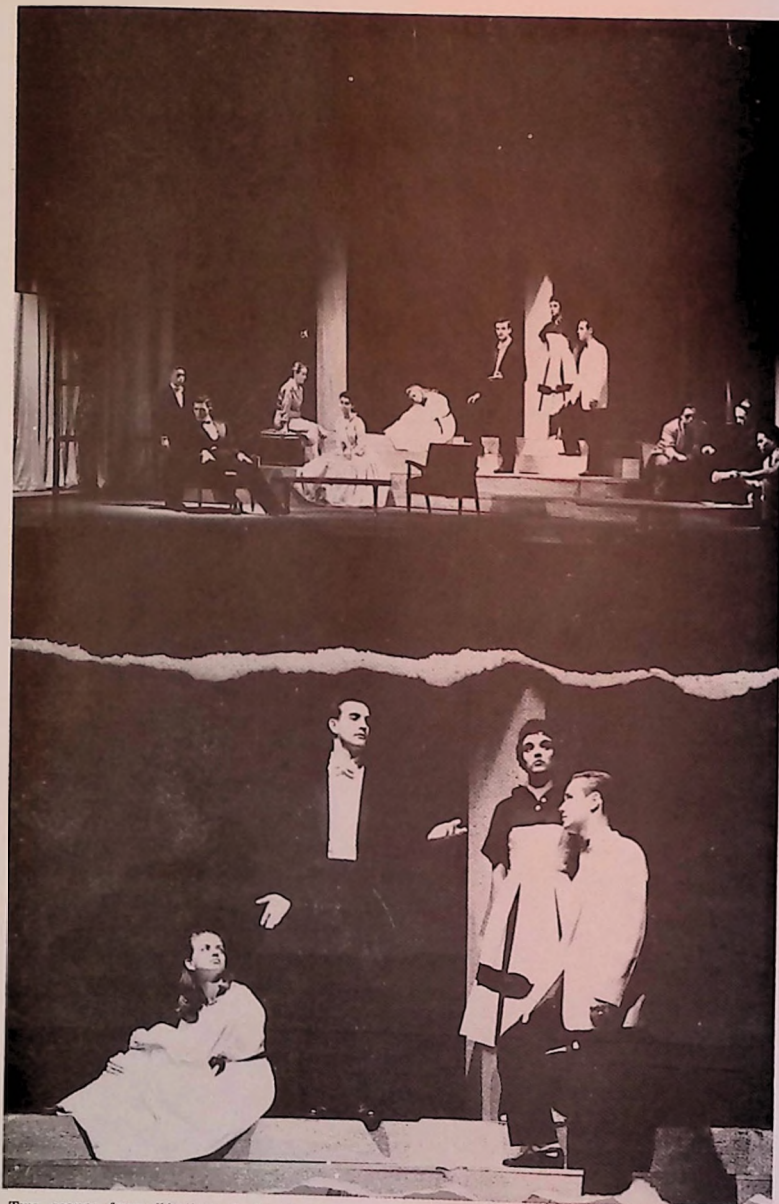
LAMBDA DELTA

Morris Harvey College

Charleston, W. Va.

Morris Harvey Blackfriars, under the direction of Mrs. Eleanor Roney, celebrated its 35th Anniversary on the campus and enjoyed a very successful season. Two major productions, "Night Must Fall" and "Family Portrait" and

two minor productions "Fog on the Valley" and "Happy Journey" were presented. At the annual awards assembly Nancy Trotter was designated best actress; Dale Dillon, best actor; and Ruth Legg, best technical worker. The year ended with the annual banquet held at the Ruffner Hotel. The first fall production will be "Tea and Sympathy". Chapter officers are Nancy Trotter, Mary Ellen Parsons, and Dale Dillon.



Two scenes from "Antigone", David Lipscomb College, Nashville, Tenn. Prof. Donald Garner, director.



Art Campbell as Caliban and Frank Hamm as Stephano in "The Tempest", Prof. Earl Dossey, director, Upsala College.



Jim Klein, Dick Zimmerman, and Duane Munson in "Cyrano", Iowa Wesleyan College, directed by Jean Gatch.

NU THETA

Hamilton College

Clinton, New York

The Charlatans, one of the nation's oldest college drama societies, is proud of their national membership in Alpha Psi Omega. Mr. William Kent-Miller Tennant, director of Charlatans, directed and staged "All My Sons", and Walter W. Smyth directed "You Can't Take It With You". Two student-written plays and "Waiting for Godot", Act II, directed by Walter Smyth were presented. William Poole wrote "You Can't Climb with A Chip On", directed by T. R. Parker and John Nelson directed his own play, "Alto Ride". Chapter secretary of Nu Theta is T. R. Parker.

PI KAPPA

David Lipscomb College

Nashville, Tenn.

The Footlighters of David Lipscomb College designed and built a new arena theatre, thus giving the college two stages instead of one. The announcements that only original scripts would be used for the program of one-acts to be used in the first arena production brought out twice as many plays as could be used. The plays ran for five nights and still many patrons were turned away who could not be seated. The original plays were "The Red Geraniums" by Sara Taylor, "Sheer Poetry" by Doug Crenshaw, "Lawyer Outwitted" by Dick Brackett, and "The Moon Saw Me" by Sara Taylor. The feature productions of the season, directed by Professor Don Garner, were "The Medium" and "The Telephone", "Ladies in Retirement", "The Enchanted Cottage" and "Antigone". Sara Whitten made an original adaptation of Eudora Welty's "Why I Live at the P. O." At the annual awards

banquet eighteen people received awards and five received pins for three years outstanding service. Others receiving awards were: Miss Bobby Lou Menefee, Larry Davis, Miss Jackie Malone, Miss Sharon Jones, and Dick Brackett.

OMEGA

Iowa Wesleyan College

Mt. Pleasant, Iowa

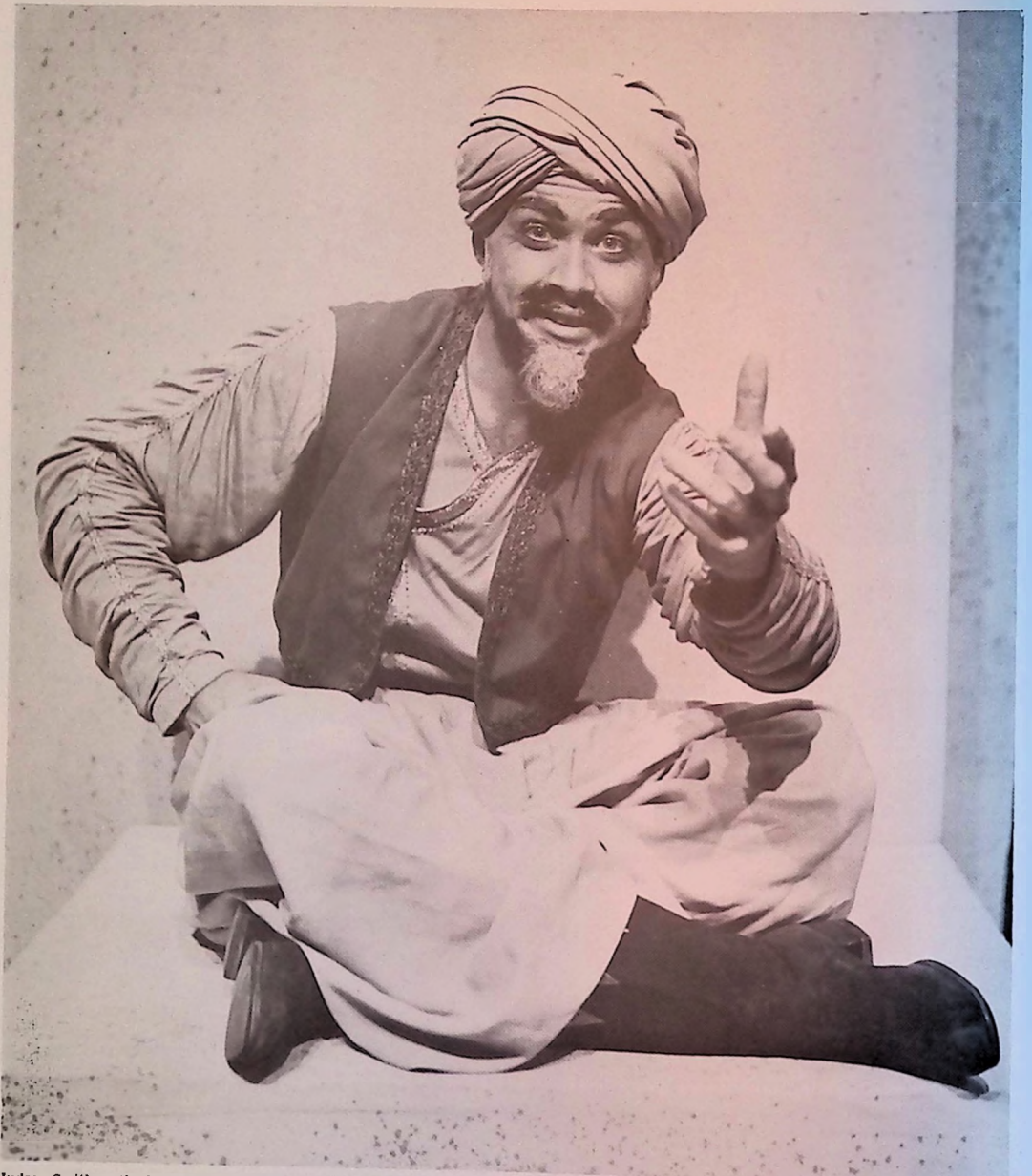
Iowa Wesleyan has added a new group to its drama department, The Chapel Players. It is a small touring company that provides entertainment and inspirational programs for the clubs and churches of the area. It is now in its second season under the direction of Mrs. Jean Gatch of the speech and drama department. The show is written in units or acts that can be assembled to fit the needs of any particular group. The major shows staged this past season, directed by Mrs. Gatch, were "The Hasty Heart" and "Cyrano". All but four of the costumes were made by the students.

EPSILON

Lynchburg College

Lynchburg, Va.

The major plays of the Lynchburg College Players for 1957-58 were "The Hasty Heart" and "Joan of Lorraine", directed by Professor Joseph W. Cohron. Dr. Robert C. Hailey will return for the '58-59 season after leave of absence for completing MFA and Ph.D. degrees. Four members were admitted to Alpha Psi Omega. President of Epsilon Cast was Kenneth Bowen; secretary, Martha Caldwell.



Judson Smith as the beggar-poet Hajj in the Millsaps College production of the musical *Kismet*, directed by Lance Goss. Photo by Alton Boyd.



Sherrie Reynolds, Thomas Walters, Paul Symanski, Joan Bracken, and Sandy Maples in the Hillsdale College production of Priestley's "An Inspector Calls". Prof. George H. Hale, director.

MU ALPHA

Hillsdale College

Hillsdale, Michigan

The Tower Players of Hillsdale College, enjoyed a very successful 1957-1958 season, presenting "The Playboy of the Western World", "An Inspector Calls", and "Sabrina Fair". Arena staging was used, and we had full houses. Each play was given two performances. Cast President was Raymond J. Perrotta, and Susan Cole was Secretary-Treasurer. New members are Joseph N. Brown, Walter R. Martin, and Ronald Pierceall.

LAMBDA GAMMA

Middle Tennessee State College Murfreesboro, Tenn.

The season 1957-'58 was a successful one for Middle Tennessee State College. The Lambda Gamma cast added fourteen new members to their roll. During this past season the group presented three productions, "Dial M For Murder", "The Curious Savage", and "My Three Angels", and the opera, "Carmen", all directed by Mrs. Dortha Tucker. The officers for the coming year are Margie Johnston, Andy Young, and Patricia Baer. The group tentatively plans to do "The Little Foxes" for their fall production.



Charlie Morris as Mr. Antrobus and Billie Dee Combs, Sabina, in "Skin of Our Teeth", Central State College, Oklahoma, Mr. Leroy Hicks, director.

BETA EPSILON

Rutgers University

New Brunswick, N. J.

This past year Queen's Theatre Guild of Rutgers University and Douglass College produced three major productions. "Teahouse of the August Moon," directed by Dr. Annetta Wood, was the season's opener. Robinson Jeffers' version of "Medea," directed by Christian Hamilton, was given in celebration of International Theatre Month. The final production was Arthur Miller's "All My Sons," directed by Erik Walz. A student written musical directed by students, and "Woyzeck" by Georg Buchner were presented as Workshop productions. At our annual banquet, Estelle Baroff received the service award and Patricia Cranmer was named the best actress of the senior class. Officers of the past year were David K. Weber, Ernest Albrecht and Jane Ringel.



Herb McLellan and Wallace Sinclair in "The Rivals", directed by Dr. Jerry Turner. Humboldt State College. Dr. Turner, Mr. McLellan, and Mr. Sinclair played the 1958 season with the Ore. Shakespeare Festival.

BETA ALPHA

Humboldt State College

Arcata, California

The Humboldt Players opened the season with an original master's thesis production of Herbert McLennan's drama, "The Barbaric Scalpel", followed by Sheridan's "The Rivals", directed by Dr. Jerry Turner. Mrs. Evelyn McCurdy directed "The Glass Menagerie", and Gilbert and Sullivan's "Yeomen of the Guard", directed by Dr. Turner with musical assistance by Dr. Leon Wagner, closed the season. The faculty play reading in January was "A Phoenix Too Frequent", with "Helena's Husband", directed by Patricia Hammond, and "The Lottery", directed by Dr. John Pauley. Mr. Angus Bowmer and Richard Graham of the Oregon Shakespearean Festival presented a program of selected scenes for the student body in March. Herbert McLellan, Wallace Sinclair, and Dr. Turner were accepted as members of this summer's Oregon Shakespearean Festival in Ashland, Oregon. Cast officers for the coming year are: Lester Cannon and Diane Anderson. The summer production was "Witness For The Prosecution", directed by Dr. John Pauley.

PI SIGMA

Mercy College

Detroit, Michigan

The Mercy College Drama Department staged "The Importance of Being Earnest", directed by Victor L. Dial, as its major production. As a partial requirement for a Drama Major, one-act plays were directed and staged: Mary Ellen Favara directed "The Woman Along the Road", Carol Langlois directed "Overtones", and Patricia Francis directed "Everyman". "Everyman" was entered in an Inter-Collegiate Drama Festival held at Assumption University, Windsor, Ontario. Six members were added to Pi Sigma Cast. Barbara Schneider was cast president, and Patricia Francis, secretary.

Page Thirty-Four

GAMMA UPSILON

Northern Illinois University

DeKalb, Ill.

This season the Gamma Upsilon assisted with three plays presented by the Northern Illinois University Speech Department. These plays, which were directed by Raymond Wilderman and Mr. Dale Jeffries, were "The Silver Whistle", "The Scarecrow", and "The Menacechmi". "Visit to a Small Planet" was the play seen during the group's banquet and play party trip to Chicago. The traditional post-play parties given for the casts of the University presentations were under the direction of the chapter officers: Peter Davies, Lloyd Larson, Pat Schmidt, and Karen Edlund.

ZETA CHI

Union College

Barboursville, Kentucky

A feature started in 1956-57 by director David Ashburn was the staging of three original one-act plays written, acted, and directed by students. It proved so successful that it has become an annual event. The major plays of this year was "Blithe Spirit" and Beckett's "Waiting for Godot". This was the first college production anywhere of this latter play. The present season began with Kingsley's "Darkness at Noon". Area lighting was used in this production and Chavez's Percussion Suite was used for scene transitions. We again had three original one-acts and Mr. Ashburn, assisted by three students presented "Don Juan In Hell". The spring production was the contemporary comedy, "The Reluctant Debutante".

GAMMA PSI

Roanoke College

Salem, Virginia

This past season Gamma Psi presented "Tiger at the Gates", directed by Miss Dorothy Rector. Later in the season, "Master Pierre Patelin" was presented at the Play Festival in Richmond, Virginia, and was rated by the festival critic as "the most successful production of the day". Harold Clurman, guest critic, has directed such Broadway Plays as "Bus Stop" and "Tiger at the Gates". Six members were admitted to Gamma Psi Cast: Bambi Wolberg, Susie Rice, Dorothy Teaford, George Henning, Charles Stagliano, and Jim McCorkindale. Mr. James McDaniel Heldman Jr. will be the faculty director for 1958-1959. He has spent the last three summers as actor-technician with "Unto These Hills".

KAPPA MU

Oregon College of Education

Monmouth, Ore.

Mr. Alan Robb directed the fall play, a revival of Pinero's farce, "Dandy Dick", and the spring play, "The House of Bernarda Alba" by Lorca. Prof. George Harding directed the winter play, "Elizabeth, the Queen". All the costumes were made by students and form a valuable addition to the costume collection. A number of one-act plays were directed by Kappa Mu cast members. Twelve members were admitted to Alpha Psi Omega, the largest group since 1952. The annual dramatic award winners were: Best Actor, Logan Foster; Best Actress, Deanne Bauman; Best Minor Role Actress, Karen Jensen; and Outstanding Staff Members, Ray Barley and Brad Everson.



Ray Schellenger, Billie Dee Combs and Johnny Edwards in a scene from Shaw's "Pygmalion", Central State College (Okla.), Directed by Prof. Leroy Hicks.

DELTA TAU

Ursinus College

Collegeville, Pa.

The Curtain Players owe Professor H. Lloyd Jones a debt of gratitude for staging a very successful season, including "Ten Little Indians", and "She Stoops to Conquer". The one-act play, "The Shirkers" was given with a dramatic reading of "Rostand", "Cyrano", and "The Doctor in Spite of Himself" with Ibsen's "The Enemy of the People". Philip Sterling won a scholarship at St. Andrew's in Scotland next year. Cast officers were Diana J. Vye and Ed Gobrecht.

DELTA PSI

Mississippi State College for Women

Columbus, Miss.

The fall production, "Ponder Heart", was presented as the first event in the newly remodeled auditoriums following a previous fire. In our annual one-act contest, the top award went to the Sophomore class who presented "Fog". Other one-acts were, "The Old Lady Shows Her Medals", "Joint Owners in Spain" and "Three Pills in a Bottle". Betsey Cabiness was selected Best Actress. A children's play, "The Sleeping Beauty" was the spring production. Following performances on the campus, the cast and crew toured several elementary schools in surrounding towns. Our annual Alpha Psi Omega Banquet this year was the occasion for again presenting our "Fanny" awards in honor of our faculty director. Six new members were initiated into the cast. New officers for the next year are Kay Gunter, President, Rosa Carlisle, Vice-President, Shelby Pinto, Secretary-Treasurer.

IOTA MU

Ark. A. M. & N. College

Pine Bluff, Arkansas

The past season proved to be one of the most spectacular yet difficult dramatic programs the department of drama has ever had. "Caesar and Cleopatra" by Shaw; "Macbeth" and "Romeo and Juliet" by Shakespeare; the "Wizard of Oz", a children's play; and "I Will Repay", a Greek adaption by Prof. James Ross, all costume plays, taxed the department to the utmost. On Oscar Day, Dorothy Jackson won the first acting award for the second time; George Whitfield won the Alpha Psi Omega Scholarship Trophy and was Magna Cum Laude, and Ruth Patterson also finished Magna Cum Laude. Six of our graduates will be very difficult to replace. In January, the Alpha Psi Omega New Year's Frolic was the opener of the campus social season. The plays for the 1958-1959 season will include "Anne of a Thousand Days", "Berkeley Square", and "Voice of the Turtle". The officers for the ensuing college year are Calvin Matlock, Joe Ellison, and Laura Barnett.

THETA THETA

Waynesburg College

Waynesburg, Penna.

Four successful plays sparkled on the Players' stage at Waynesburg in the 1957-58 season. The lively comedy, "The Loud Red Patrick" opened the season. "The Velvet Glove" followed in January. A modernized version of "Everyman" captivated the audience early in the spring, and the final play was "The Doctor in Spite of Himself" translated and adapted from the French by our director, Mr. F. B. Randolph. The crowning event was the annual spring banquet. With most of the cast returning next year, an enthusiastic Alpha Psi group is now planning a lively and active season.



Ferol Finch, James Hodges, and Suellen Purdie in "Jane Eyre", Lindenwood College production, directed by Robert Douglas Hume.

THETA

Baker University

Baldwin, Kansas

With the production of two fine plays the Baker Players have had a very successful year. The fall play was Sydney Howard's "The Silver Cord". The spring play, "Teahouse of the August Moon", by John Patrick was very well received. The head of the speech department and director of these productions was Mrs. Thelma Reinhard Morreale. At our annual "Awards Chapel", Kay Keirns, a veteran of many Baker productions, was acclaimed "Baker Player of the Year". Four members were initiated into the Theta cast: Mike O'Byrne, Joe Low, Dennis Storer, and Charles Caywood.

PI DELTA

Midwestern University

Wichita Falls, Texas

Our new faculty member is Dr. Thomas J. Pace, and the productions of our university theatre this past year were "Dial M for Murder", "The Reluctant Debutant" and "Carousel". Our annual Children's Theatre production was "The Crazy Cricket Farm". Nine members were admitted to the national honor society in dramatics. James Rochester was cast president.

ALPHA UPSILON

Clarion State Teachers College

Clarion, Pa.

The College Players of Clarion State Teachers College produced three one-acts: "Nobody Sleeps", "Steps from Beyond" a Christmas play, "O Come Let Us Adore Him". Dr. Ralph Mead directed the full length spring production "Asenik and Old Lace". Alpha Upsilon cast increased this year with an addition of eight new members.

Mr. Ralph Mead is the faculty director of the cast and the new officers are president, Fred Hall; vice-president, Fred Thickey; and secretary-treasurer, Helen Thompson.

KAPPA CHI

Lewis and Clark College

Portland, Oregon

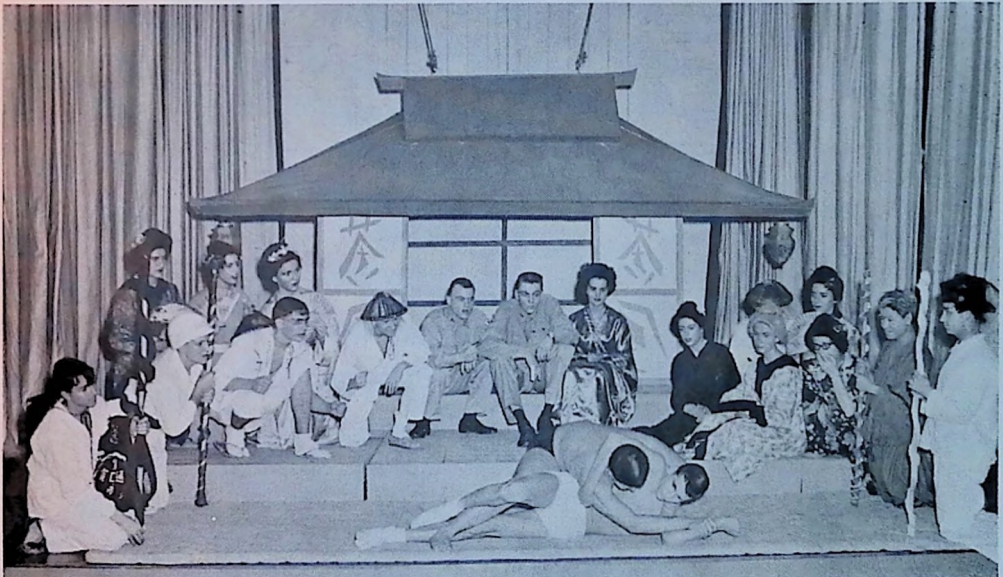
Dr. Carolyn Silverthorne directed "Papa is All" and "Beyond the Horizon", and Dr. Clifford E. Hamar directed "The Merchant of Venice" during the 1957-1958 season. Three one-act plays were student-directed: "Aria da Capo", "Knives from Syria", and "Beauty and the Jacobin". Some of the workshop plays were "The Tender Edge" by Brock Brower, "The Twelve Pound Look" by Barrie, "No Exit" by Sartre, and "Purgatory" by W. B. Yeats. The winner of the Best Actor and Best Actress Awards were Mr. J. M. Svendsen and Miss Sangwan Zimmerman. Cast officers were George H. Bieber, Eric Standius, Karem Wiscup, and Sangwan Zimmerman.

KAPPA PHI

Texas College of Arts and Ind.

Kingsville, Tex.

About 3200 high school students saw our production of "Hamlet", directed by Dr. Albert E. Johnson. Dr. Johnson also directed Shaw's "Misalliance" for International Theatre Month. "The Hasty Heart" was directed by Josephine B. Moran, and Madge Miller directed the children's theatre play, "Hansel and Gretel". Dr. Johnson directed a reading of "Macbeth" and staged "The Second Shepherd's Play". During the current year we will have a new technical director, James Keith Kennedy, who will direct an arena production, and a new assistant technical director, Miss Jean Taylor, who will direct the children's play. Dr. Johnson will direct "The Merchant of Venice" as the first fall production.



The wrestling scene from "Teahouse of the August Moon", Central College, Pella, Ia. . . . Maurice Birdsall, director.



Scenes from "The Barretts of Wimpole Street", production by The Dominican College Players of St. Mary's Dominican College, New Orleans, La. Directed by Sister Mary Joanna, O.P., Ph.D. Upper left, Louis Massa and Ruth Moise; right, Ethel Muller. Lower left: Joan Ciesl, Ruth Moise, and Paul Lemke; right, Vincent Fertitta, Jr., and Marcla Mock.



Scene from "Stalag 17", Lenoir Rhyne College, Prof. George Spence, director.

GAMMA ETA

Lenoir Rhyne College

Hickory, N. C.

The Lenoir Rhyne Playmakers had a highly successful year under the direction of Professor George Spence. The major productions "GLASS MENAGERIE" and "STALAG 17" were presented in the new P. E. Monroe Auditorium. Lenoir Rhyne's first musical royalty show "OKLAHOMA" was presented by the music and drama departments and proved to be a sell-out affair. The Playmakers and the Religious Council presented an inspiring one-act play during Religious Emphasis Week. A series of six one-act plays was presented during the year. Members of the Playmakers conducted the try-outs, cast, directed, and produced the plays in a professional manner. The last major production of the season was "THE MALE ANIMAL" which, presented arena style, played to a full house.

BETA SIGMA

State Teachers College

Mayville, N. D.

Dramatic work at State Teachers College, Mayville, North Dakota, has been revitalized during 1957-58. Under the direction of Dr. Agnes Denman Nelson, the following plays were produced: "Papa is All" and "Our Town". Seven one-act plays were presented: "Riders to the Sea," "A Night at an Inn," "Spreading the News," "Enter the Hero," "If Men Played Cards as Women Do," "The Valiant," "Neighbors". The children's theatre play, "Hansel and Gretel," will be produced during the summer session. Seven new members were initiated into Alpha Psi Omega. Best actor awards were given to Bonnie Torkelson and to Guy Hayford.

GAMMA KAPPA

State Teachers College

Edinboro, Penna.

A College Centennial Pageant was presented in December and again at Alumni Day in May. "A Midsummer Night Dream" was the first production and was so successful that it ran for three nights. Next came a bill of student-directed one-act plays. We gave two studio productions in February: Euripides "Electra" and "Alice Through the Looking Glass". In April, "Oklahoma" played for three nights and because of the heavy ticket sale an extra performance had to be scheduled. Prof. Lawrence C. Vincent, director of theatre, and Miss Jane Ludgate are cast sponsors. Cynthia Clemente is cast secretary. "As You Like It" has been selected as the fall play.



"Kantan", a Japanese Noh play, Rutgers, Newark Division, Lester L. Moore, director.
Myrna Cooperman. The Hostess; Richard Schoener—Rosci.

BETA NU

Arizona State College

Flagstaff, Arizona

Mr. Glen Olmstead, technical director, built a good working Emerac for "The Desk Set", the opening play; and after the show, hordes of people came backstage to get a closer view of automation. In February, "The Lark" drew the largest crowd of the season. Prof. Ralph J. Holly, director of these productions, next staged "The Taming of the Shrew", using Western motif for costumes and set. Squaw dresses, ten-gallon hats, western shirts and cowboy boots, and even Padua and Verona, did not seem incongruous in the dude ranch country. None of the lines were changed. In March senior drama students, Helen Aldon, Donna Roth, and Max Wager, staged a program of three one-act plays. This was so successful that next year senior members of Alpha will again direct this program. The winners of the Arizona Playmaker Awards were: Best Actor, Max Wager, Best Actress, Marilyn Morris, Best Supporting Actor, and Actress, Bob Cox and Sari Friend, Best Technical Work, Glen Olmstead, and Most Significant Playmaker Contributions, Sharon VanderSys, Glenda Blando, and Donna Roth.

THETA PI

Pacific Lutheran College

Tacoma 44, Wash.

"A Christmas Carol" is an annual performance at Pacific Lutheran College, and every student who receives a part, plays this role every year he is in college. The play is entirely student-directed and produced. Dr. Theodore O. H. Karl directed "The Mousetrap", and Miss Jane Smith directed "The Man Called Peter". "The Mousetrap" was staged arena-style. Rod Baschore was the student director and Karen Knutzen was assistant director. Nine members were qualified for Alpha Psi Omega. Chapter officers were Robert Fleming and Arlene Halvor.

1957-1958 PRODUCTIONS

KAPPA GAMMA, Southwest Missouri State College, Springfield, Missouri, Leslie Irene Coger, director. Children's plays: "Huckleberry Finn" directed by Dan McCarter and "Ali Baba and the Forty Thieves" directed by Judith Mayes. Long plays: "Kiss Me Kate" directed by Leslie Irene Coger and "The Chalk Garden" directed by Bill Kelsay. Student directed workshops plays under the supervision of Harry Carlson: Three Shaw plays: "Polson and Petrification", "How He Lied to Her Husband", "The Dark Lady of the Sonnets" and "The World of Sholem Aleichem".

PI OMEGA, Sterling College, Sterling, Kansas, Mask and Wig Players, Professor Clayton C. Campbell, director. "The Man Called Peter" and "The Solid Gold Cadillac". Two programs of one-acts, Ruth Hammond, director of Studio Theatre, 1958; Four plays, March 14: "The Last Curtain", "Three on a Bench", "The Twelve Pound Look" and "The Boor". (Mar. 28) "Proof of a Man", "The Lottery", "The Shoemaker's Wife" and "The Old Lady Shows Her Medals". Chapter officers: Barbara Wilson and Marilyn Kremer.



"Ali Baba and the Forty Thieves", Children's Theatre production of Springfield State College, directed by Judith Mayes.



Scene from "Death Takes a Holiday", Gay Collier, director, Abilene Christian College, Abilene, Texas.

ALPHA OMEGA

Augustana College

Rock Island, Ill.

The major productions of the Augustana College Theatre were "Mr. Pim Passes By" by A. A. Milne, "The Traveling Lady" by Horton Foote, and "Ghosts" by Ibsen, directed by Prof. Don Tornquist. The Alpha Psi Omega chapter took complete responsibility in arranging a festival of nine one-act plays and a Christmas play for the student body. We also produced "Unto Thine Own House" for the Rock Island Mental Health Society. The Milne play was taken on tour to Creston, Iowa. In the past two years we have added and installed over twelve-hundred dollars worth of lighting equipment. Cast officers for the current year will be Dick Stratton, Karen Lindquist, Karen Looze, Nancy Honette, and Suzanne Johnson.

RHO BETA

State Teachers College at Boston

Boston, Mass.

The Rho Beta Cast was installed this spring with nine charter members. The Harlequin Players staged one long play, "The Madwoman of Chaillot" with Robert Guest, faculty director. Six student-directed one act plays were presented this year: "A Child is Born", "Riders to the Sea", "Auf Wiedersehen", "The Happy Journey", "Lord

Byron's Love Letters" and "Red Peppers". Mr. Henry L. Gormley, Jr. is faculty director of the Harlequin Players. Cast officers are president, David McGuire, and secretary, Elenore Rosenberg.

ETA SIGMA

Troy State College

Troy, Alabama

The Playmakers and Eta Sigma Cast are establishing a reputation for a complete job of playmaking. This year, "Oasis", a mystery-comedy in three acts was written by Charles Oliver and George Christo. The production was dedicated to Miss Thelma Goodman for her many contributions to the theatre on the Troy State campus. The set called for a shabby barroom in an isolated hotel in the Sahara Desert, and the student-written, student-directed play was pleasingly melodramatic throughout. The authors have already completed the play for the current season, a psychological drama entitled "Call Me Larry". The major plays of the Playmaker season, directed by Professor Jack Solomon were "Teach Me to Cry", "A Connecticut Yankee in King Arthur's Court", and "Medea". A program of one-act plays were "Incident on 4th Street", "The Story of the Mirror", "Londonderry Air", and "A Phoenix too Frequent". Cast president was Mary Olive Schlich and secretary was Marian Lauder.



In-the-round production of Mollere's, "The Miser", directed by Mrs. Murgery Wilson, McNeese State College, (La.)

KAPPA TAU

Idaho State College

Pocatello, Idaho

The members of the staff of the Idaho State College Theatre presented six feature productions: Dr. Hal Todd directed "The Duchess of Malfi", "The Silver Tassie" by O'Casey, and "The Miser". Charles Billyen directed "Finian's Rainbow" and "Bus Stop". Dr. Vio Mae Powell, director of State College Theatre, directed "Dear Brutus". Money for several acting scholarships in the college theatre was provided by presenting two children's plays, "The Land of the Dragon" and "Peter, Peter Pumpkin Eater" for the elementary schools, over 3,000 children seeing the plays. Ten members were admitted to Alpha Psi Omega. Jan Peck was chapter president.

NU KAPPA, Austin College, Sherman, Texas. Blackfrairs, Mr. Paul M. Beardsley, director. "Thunder Rock", "Twelfth Night", and "Our Town". Cast president, Frank Meyer; secretary, Elizabeth Hurley.

ZETA ZETA, Bethany College, Lindsborg, Kansas. Mary Jane Davis, director "Macbeth" and "The Lady's not for Burning" by Christopher Fry. Cast officers, Gloria Force, president; Patricia Anderson, secretary.

Page Forty Two

ZETA DELTA

Arkansas State Teachers College

Conway, Arkansas

One of our outstanding successes this year was a thriving drama workshop sponsored by Alpha Psi Omega. This is the second year this has been conducted and twenty one-act plays were presented as studio plays. All Productions were by students and new people have acquired training and experience that have benefitted the whole college theatre program. The major plays directed by Professor Leona Scott were "My Three Angels", "Kind Lady", and "Twelve Angry Men". "Don Juan in Hell" was presented by a drama quartette in our recently acquired little theatre. Alpha Psi Omega officers were Dan Skelton and Jean Edwards.

KENTUCKY LAMBDA

Kentucky Wesleyan College

Owensboro, Ky.

Professor Douglas Reid Sasser directed the Wesleyan Players in their productions of "Hamlet" which was taken on a tour of Eastern Kentucky and to Lexington and Louisville. Peggy Childers directed the Rose Frank-en comedy, "Claudia." Six new members were admitted to Alpha Psi Omega. Anita Simmons is cast president and John Douglas, cast secretary. The recipients of awards at the college Recognition Convocation were C. M. Miller, best actor; Jean Goodaker Sanders, best actress; Bill Fowler, Anita Simmons, and Bruce Benson. The drama group presented a silver tray to their faculty sponsor, Douglas R. Sasser.

THIETA MU

University of Minnesota

Duluth 3, Minn.

The University Theatre, University of Minnesota, Duluth Branch, has staged its usual full schedule of productions under the direction of Professor Harold L. Hayes. The season included a children's theatre play, "Bombino", by Stanley Kauffman. The childrens plays were student-directed. The feature plays were "Desire Under the Elms" by O'Neill, "The Flowery Peach" by Odets, A Christmas Mystery play, and "The House of Bernarda Alba". Our students also helped with the four major plays of the Duluth Little Theatre. Seventeen members were admitted to Alpha Psi Omega. Carol J. Gould is cast secretary.

PI TAU

State Teachers College

Shippensburg, Pa.

Through the use of student directors, our Masquers organization has a one-act play ready to present to the club every two weeks. From these plays, we select plays for college assemblies and to take to schools in the surrounding area. Our one-act plays for the past year included: "Finger of God," "The Twelve-Pound Look," "Mad Breakfast," "The Monkey's Paw," "The Old Lady Shows Her Medals," "Three on a Bench," "Time is a Thief," "Minikin and Manikin," and two original plays "The Best Man Wins" and "Ellies' Furnishin'". Our director, Dr. Carolyn Cox, directed "Little Bird of a Woman" for a P.T.A. program and Chekhov's "The Marriage Proposal" for a television presentation. Our major productions were "You Can't Take it With You" and "Angel Street," which we double-cast. Next year we plan to do "Blithe Spirit" and possibly Shakespeare.

TAU, Texas Technological College, Lubbock, Texas. Sock and Buskin, Ronald Schultz, director. "Dark of the Moon" and "Macbeth". The highlight of the season was temporary conversion of the Livestock Pavilion into an "Elizabethan" theatre. Short play: "The House of Bernarda Alba". Cast president, Arthur Evans; secretary, Roland Myers.



Joseph Gallison and Donald Stoddard in "The Man Who Came to Dinner", Northeastern University, Eugene J. Blackman, director; setting by Charles Devlin.

NU CHI

Northeastern University

Boston, Mass.

The Silver Masque staged four major productions, all directed by Prof. Eugene J. Blackman: "The Man Who Came to Dinner", "Dark of the Moon", "Oklahoma", and "Caine Mutiny Court Martial". Alpha Psi Omega alumni furnished the entertainment for the Silver Masque Banquet in the spring and the best acting awards were made to Joseph Gallison and Lorna Herzberg. The best supporting actor awards went to Stanley Mullen and Gilda Gregorio. Thomas Tobin was named outstanding senior of the year. Ten new members were admitted to Alpha Psi Omega, of which the chapter officers were Charles Devlin, James DeFelice, Don Stoddard, and Vera Schlossberg. Plays selected for 1958-59 are "Pygmalion", "The Great Sebastians", "Carousel", and "Bus Stop".

ETA IOTA

West Texas State College

Canyon, Texas

This season was the first time that our drama department made all the costumes for a Shakespearean production—"The Merchant of Venice." Our first summer theatre workshop play, "The Tender Trap," was cast and staged in ten days. A program of one-act plays included "Teach Me How To Cry," "Out Of The Frying Pan," and "A Dash Of Bitters." Another first event for us was the staging of "As You Like It" in an improvised out-of-door theatre on the steps of the Education Building. It ran for six wonderful nights and was re-staged for three more performances for the second summer session. Dr. and Mrs. William Moore directed all productions with Mr. Bob Antrim acting as technical director. Theatre awards for outstanding work were made to Eddie Thomas, Martha Hinson, Roberta Hickman, Jerry Williams, Merle Dean Campbell, and Tommy Culpepper. An award for outstanding technical work was made to Mr. Robert Antrim.

UPSILON, Kansas Wesleyan University, Salina, Kansas, director, Lilybelle Lewin Carlisle. The introduction of faculty members in the production of "Julius Caesar" stimulated the cast and brought out talent never before experienced. One act plays: "Hello, Out There", "Trifles", and "A Voice Remembered". Cast president, Wesley Jackson; secretary Edie Ann Baustian.

LAMBDA IOTA

Midland College

Fremont, Nebraska

"The Devil's Disciple" directed by Mrs. Sara Hawkinson was the Puppets and Players first show of the year. The highlight of our drama season at Midland College was the annual tour held in March. "The Servant In the House" was performed in Lutheran Churches in the states of Nebraska, Colorado, New Mexico, Texas, Oklahoma, and Kansas. An interesting experiment was tried successfully in that we played it straight through without act or scene breaks. The effect was enhanced considerably, and the mood was well sustained. Following our policy in Puppets and Players five one-act plays were presented throughout the year. Eight members were admitted into the cast. New cast officers are Elsie Holm, Mike Monnich, and Janice Foster.

OTHER PRODUCTION RECORDS, 1957-1958

ALPHA, Fairmont State College, The Masquers, "Angel Street" directed by Jo Ann Lough, "Bus Stop" and "Detective Story", directed by James McTeague, and "The Silver Whistle", directed by L. A. Wallman.

THIETA RHO, Whitworth College, Spokane, Washington. "The Late Christopher Bean" and "The Merchant of Venice", directed by Prof. Loyd B. Waltz, and "The Lark", directed by Prof. Mark Lee. First play of the 1958-59 season, "The Great Big Doorstep". Cast president, Mr. Ted O. McAtee.

NU ALPHA, Livingston State College, Livingston, Alabama. Theatron Drama Society, Mrs. Nell C. Ennis, director. "Mother is a Freshman". One-act plays: "The Apple of His Eye" by Millard Crosby and "The Advantage of Being Shy" by Probie Hoffman. Cast officers: Nan Kile and Marjorie Lindsay.

ALPHA CHI, Shepherd College, Shepherdstown, W. Va. Dr. Vera Ellen Malton, director. Long plays: "Outward Bound", "The Rivals", "Mr. Pim Passes By". As part of a Fine Arts Festival, the drama department presented "A Living History of the Theatre" using cuttings from seven great plays with Fred Buzzard as narrator. Cast president, Charles Woodward; secretary, Mahlon Stiles.

PI UPSILON, Tennessee Polytechnic Institute, Cookeville, Tennessee, Dorothy Pennebaker and Clement Eyer, directors. Long plays: "Silver Cord", "Laura", and "Ghosts". Cast president, John H. Ansley; secretary, M. D. Webb.

RHO DELTA, University of Tennessee, Martin Branch, Martin, Tennessee, Vanguard Theatre, J. Robert Swain, director. Long plays: "The Glass Menagerie", "Oklahoma", and "Born Yesterday". Short plays: "The Boor" and "The Red Key". Cast president, James Dallas; secretary, J. Douglas Chandler.

ETA IOTA, West Texas State College, Canyon, Texas, Professor William A. Moore, director. "The Merchant of Venice", Shakespeare.

PI PI, Converse College, Spartanburg, South Carolina, Palmetto Players, James W. Parker, director. "The Matchmaker", "Blythe Spirit", and "Don Juan in Hell", senior recital of Miss Tina Nunnamaker. Productions planned for next year: "Thieves' Carnival", "Romeo and Juliet", and "Rain". Cast president, Jean C. Watkins; secretary, Tina Nunnamaker.



Chas. Saccardo (Curley), Jack Wade (Jud) and Jane Kissling (Laurey) in "Oklahoma", Northeastern Univ., director, Eugene J. Blackman; backdrop by Richard Bice.



Bill Donohue, Waldron Coon, Joe Ippolito, marcia Adlerstein, and John Simon in the scene from Mollere's "LeMisanthrope", Upsala College, Prof. Earl Dossey, director.

IOTA, Johns Hopkins University, Baltimore, Md. "The Barnstormers," Dr. McClain, faculty advisor. "Stalag 17," (Freshman production), "The Doctor's Dilemma", and "Charlie's Aunt". Francis Bowen, director of The Hopkins Playshop, directed "The Concert". President of Iota Cast, Edward J. Ross, II.

DELTA SIGMA, Bethel College, West Newton, Kansas. Faculty director of dramatics, Virginia Edgett. Full length productions: "The Apple of His Eye", "The Rock" (religious drama), and "The Magic Flute". Short play, "The Twelve Pound Look". Cast officers: Albert G. Braun, Zona Platt, and Hilda Regier, reporter.

IOTA RHO, Coe College, Cedar Rapids, Iowa. Coe College Players. Director, Jeanette Ringland. "Anastasia" by Marcelle Maurette, "Huck Finn," and three reader's theatre productions "Faust," Goethe; Richard II," and "Marriage" by Gogol. President, Gene Henning; sec.-treas., Lois Hahn.

THETA NU, Oakland City College, Oakland City, Indiana. Director, Margaret McConnell. "Dial M for Murder" by Frederick Knott, "Family Portrait" and "Footfalls" by B. Dufield. Cast president, Nick Goble; secretary, Edith Pike.

THETA UPSILON, Radford College, Radford, Virginia, Miss Mary Homrighous, director. "The Madwoman of Chailot", "The House of Bernarda Alba", and "The Chalk Garden". Short plays: "A Sunny Morning" and "Arla da Capo". Cast president, Marie Knight; secretary, Marjorie Angle.

MU MU, Beaver College, Jenkintown, Pennsylvania, Beaver College Theatre Playshop, Judith Elder, director. "Skin of our Teeth" and "Sister Beatrice". Student-directed short plays: "Rouge Atomique", "Fall of the City", "The Will", and "Dear Departed". Cast president, Patricia Thompson; Secretary, Maureen McKeown.

NU ETA, Niagara University, Niagara University, New York, Niagara University Players, Rev. John A. Murray, C. M., director. "My Three Angels" and "The Song of Bernadette". Cast president, Clifton Weed; secretary, Cathy Socka.

ALPHA RHO, West Virginia Wesleyan College, Buckhannon, West Virginia, Playshop, Betty Groak, director. "The Silver Cord" and "The Importance of Being Ernest". Cast president, Ruth Gross; secretary, Thomas Goheen.

KAPPA IOTA, Southwestern at Memphis, Memphis, Tennessee, Southwestern Players, Raymond S. Hill, director. "Harvey" and "The Insect Comedy". Cast president, Adele Wolf.

BETA RHO, Nebraska State Teachers College, Wayne, Nebr. Lenore P. Ramsey and Dr. Dorothy Selz, directors of the college theatre. "The Playboy of the Western World", "The Admirable Crichton", and "The Matchmaker". One-act plays given in the round: "One Day More", "Op O' Me Thumb", and "One of Many".

NU CHI, Northeastern University, Boston, Mass. The Silver Masque, Prof. Eugene J. Blackman, director. Long plays: "The Dark of the Moon", by Richardson and Burney, "Oklahoma", (musical), and "The Man Who Came to Dinner".

THETA OMEGA, Wake Forest College, Winston Salem, Professor James H. Walton, director. "Pure as the Driven Snow". Workshop and laboratory plays provided entertainment for clubs and groups in Winston-Salem. An awards banquet was sponsored. Officers for the current year are Dinah Guttis, Karen Walker, Rozella Jewell and Jim Herring.



Joyce Leu and Bob Noler in "Witness For the Prosecution", Central College, Pella, Ia. Maurice Birdsall, director.

ALPHA PI. Millsaps College, Jackson, Mississippi, Lance Goss, director. "Tiger at the Gates", "Teahouse of the August Moon", "Summer and Smoke", and "Kismet". Workshop productions (student directed): "In April Once", "Sorry, Wrong Number", and Act II of "The Torchbearers". Selected for 1958-59 season: "Paint Your Wagon", "The Sea Gull", "Julius Caesar", and "The Brothers Karamazov".

NU PHI. Morgan State College, Baltimore, Md. Arthur C. Lamb, director. "Janus", "The Bend in the Road", "The Living Room", "Murder Without Crime", and "Dream for Tomorrow". A number of one-acts and six TV shows were produced over WJZ, a local commercial station.

MU ETA. East Texas State College, Commerce, Texas, Dr. Rosemary J. Owens and Dr. Curtis Pope, directors. "The Rainmaker", "Summer" and "Smoke", "Rope" arena-style.

ALPHA GAMMA. Morningside College, Sioux City, Iowa, Dr. Philip B. Clarkson, director. "The Grass Harp". An impressionistic set, designed by Mr. Tom Priestman, proved very workable and effective.

IOTA XI. Incarnate Word College, Sister Mary Helene, director. Long play: "The Upper Room" by Monsignor Benson. Drama Department sponsored a performance of the Dublin Players from Irish Abbey Theatre. Cast president, Roberta Kretzmeier.

THETA SIGMA. Missouri Valley College, Marshall, Missouri, William M. Force, director. Long play: "Bus Stop". Cast president, Roberta Ingrossia; secretary, June Hales.

ETA XI. Thiel College, Greenville, Pa., Professor V. Spencer Goodreds, director. Long plays: "The Mouse Trap" and "The Man Who Married A Dumb Wife." Short play: "Suppressed Desires". Cast president, Walter Messenger; secretary, Deidre Fox.

PI ZETA. Washington College, Chestertown, Maryland, Professor E. Winifred Opgande, director. Long plays: "The Detective Story" and "Blithe Spirit". Cast president, Sally Anne Groome; secretary, Mary Norton.

EPSILON. Lynchburg College, Lynchburg, Virginia, Joseph W. Cohorn, director. Long plays: "The Hasty Heart" and "Joan of Lorraine". Cast president, Don H. Martin; secretary, Roberta D. Hiscock.



Ruby Neuman, Bill Lubenow, Bob Klein in "Finian's Rainbow" produced for Pella's 23 annual Tulp Time, Bob Omick and Maurice Birdsall, director.

ALPHA ZETA. Central College, Pella, Iowa, Mr. Maurice Birdsall, director. "The Teahouse of the August Moon", "Witness for the Prosecution", "Finian's Rainbow". Cast officers, Miss Gwen Vanden Berg and Miss Joyce Leu.

ZETA PI. Mercer University, Macon, Georgia, Mercer Players, Audrey Needles, director. "The Solid Gold Cadillac", "Antigone", and "The Beautiful People". One-act play: "Pierre Patelin". Cast president, Max Croft; secretary, Jimmy Prescott.

GAMMA SIGMA. Cascade College, Portland, Oregon, Geraldine Hess, director. "The Family Nobody Wanted", and "Cry, the Beloved Country". Cast president, James Chapman; secretary, Marlyn Myers.

LAMBDA LAMBDA. Arkansas State College, State College, Arkansas, Arrowhead Players, Professor E. Ray Day, director. "Guest in the House" by Hagar Wilde and Dale Everson. One-act plays: "Overtones", "A Marriage Proposal", and "The Happy Journey to Trenton". Cast president, Lorna Jean Gurley.

ETA. College of Idaho, Caldwell, Idaho, Scarlet Masque, John Ford Sollers, director. "The Crucible", "The Glass Menagerie", and "Twelfth Night". One-act plays: "Hello Out There", "How He Lied to Her Husband" and "The Boor". Cast president, Larry Brooks; secretary, Betty Steele.

BETA PHI. Stephen F. Austin State College, Nacogdoches, Texas, Dr. Sally M. Gearhart, director. "Liliom" and "Blithe Spirit". Cast president, Patsy Jumper; Secretary, Florine Alexander.

KAPPA SIGMA. Northwestern Missouri State College, Maryville, Missouri, Dr. Ralph E. Fulsom, director. "Charley's Aunt", "Night Must Fall", and "Born Yesterday". Cast president, Delbert Smith; Secretary, Ruth Curfman.

MU UPSILON. Lycoming College, Williamsport, Pennsylvania, Lycoming College Players, Dr. Linn and Mr. Sonder, Directors. "The Would Be Gentleman", "The Winslow Boys" and "Let's Go Abroad". Cast president, Robert D. Carlyon; secretary, Nancy Hall Gieniec, and James H. Poulliott, treasurer.

DIRECTORY OF THE ALPHA PSI OMEGA

GRAND DIRECTOR

DR. YETTA G. MITCHELL

New York University
Washington Square

GRAND STAGE MANAGER

PROF. DONALD GARNER

David Lipscomb College
Nashville, Tenn.

GRAND BUSINESS MANAGER

DR. PAUL F. OPP

Box 347, Fairmont, West Virginia

BETA, Marshall College,
Huntington, W. Va.
GAMMA, Washington & Lee University,
Lexington, Va.
DELTA, Acadia University,
Wolfville, N. S., Canada
EPSILON, Lynchburg College,
Lynchburg, Va.
ZETA, Western State College,
Gunnison, Colo.
ETA, The College of Idaho,
Caldwell, Idaho
THETA, Baker University,
Baldwin, Kan.
IOTA, The Johns Hopkins University,
Baltimore, Md.
KAPPA, Ottawa University,
Ottawa, Kan.
LAMBDA, Washington & Jefferson College,
Washington, Penna.
MU, University of Texas,
Austin, Texas
NU, University of Houston,
Houston, Texas
XI, Chico State College,
Chico, Calif.
OMICRON, Wilmington College,
Wilmington, Ohio
PI, West Virginia University,
Morgantown, W. Va.
RHO, Lincoln Memorial University,
Harrington, Tenn.
SIGMA, Linfield College,
McMinnville, Ore.
TAU, Texas Technological College,
Lubbock, Texas
UPSILON, Kansas Wesleyan College,
Salina, Kan.
PHI, Colorado State College of Education,
Greely, Colo.
CHI, Buena Vista College,
Storm Lake, Iowa
PSI, Lindenwood College,
St. Charles, Mo.
OMEGA, Iowa Wesleyan College,
Mt. Pleasant, Iowa
ALPHA ALPHA, Concordia College,
Moorhead, Minn.
ALPHA BETA, Coker College,
Hartsville, S. C.
ALPHA GAMMA, Morningside College,
Sioux City, Iowa
ALPHA DELTA, Tarkio College,
Tarkio, Mo.
ALPHA EPSILON, Westminster College,
Fulton, Missouri
ALPHA ZETA, Central College,
Pella, Iowa
ALPHA ETA, Minnesota Teachers College,
Moorhead, Minn.
ALPHA THETA, McKendree College,
Lebanon, Ill.
ALPHA IOTA, Berea College,
Berea, Ky.
ALPHA KAPPA, University of Tampa,
Tampa, Fla.
ALPHA LAMBDA, Wisconsin State Teachers
College, Superior, Wis.
ALPHA MU, Emory and Henry College,
Emory, Va.
ALPHA NU, Colgate University,
Hamilton, N. Y.
ALPHA XI, Arkansas College,
Batesville, Ark.
ALPHA OMICRON, State Teachers College,
Bloomsburg, Pa.
ALPHA PI, Millsaps College,
Jackson, Miss.
ALPHA RHO, West Virginia Wesleyan College,
Buckhannon, W. Va.
ALPHA SIGMA, Louisiana College,
Pineville, La.
ALPHA TAU, University of Richmond,
Richmond, Va.
ALPHA UPSILON, State Teachers College,
Clarion, Pa.
ALPHA PHI, State Teachers College,
Valley City, N. D.
ALPHA CHI, Shepherd State College,
Shepherdstown, W. Va.
ALPHA PSI, State Teachers College,
La Crosse, Wis.
ALPHA OMEGA, Augustana College,
Rock Island, Ill.
BETA ALPHA, Humboldt State College,
Arcata, Calif.
BETA BETA, Lafayette College,
Easton, Pa.

BETA GAMMA, Bethany College,
Bethany, W. Va.
BETA DELTA, New York University,
Washington Square, New York
BETA EPSILON, Rutgers University,
New Brunswick, N. J.
BETA ZETA, East Central State College,
Ada, Okla.
BETA ETA, Huntington College,
Montgomery, Ala.
BETA THETA, University of Georgia,
Athens, Ga.
BETA IOTA, Valparaiso University,
Valparaiso, Ind.
BETA KAPPA, Upper Iowa University,
Fayette, Iowa
BETA LAMBDA, University of Delaware,
Newark, Del.
BETA MU, Union University,
Jackson, Tenn.
BETA NU, Arizona State College,
Flagstaff, Ariz.
BETA XI, Concord State College,
Athens, N. Va.
BETA OMICRON, State Teachers College,
California
BETA PI, William Jewell College,
Liberty, Mo.
BETA RHO, Nebraska State Teachers College,
Wayne, Neb.
BETA SIGMA, North Dakota State College,
Mayville, N. D.
BETA TAU, University of South,
Sewanee, Tenn.
BETA UPSILON, New Mexico Western
College, Silver City, N. M.
BETA PHI, Stephen F. Austin College,
Nacogdoches, Texas
BETA CHI, Defiance College,
Defiance, Ohio
BETA PSI, Kent State University,
Kent, Ohio
BETA OMEGA, Keuka College,
Keuka Park, N. Y.
GAMMA ALPHA, Southeastern State
College, Durant, Okla.
GAMMA BETA, Trinity University,
San Antonio, Texas
GAMMA GAMMA, University of Alabama,
University, Ala.
GAMMA DELTA, New Mexico Highlands
University, Las Vegas, N. M.
GAMMA EPSILON, Murray State College,
Murray, Ky.
GAMMA ZETA, Colorado A&M College,
Ft. Collins, Colo.
GAMMA ETA, Lehigh Rhyne College,
Hickory, N. C.
GAMMA THETA, Indiana Central College,
Indianapolis, Ind.
GAMMA IOTA, State Teachers College,
Alpine, Texas
GAMMA KAPPA, State Teachers College,
Edinboro, Pa.
GAMMA LAMBDA, Baylor University,
Waco, Texas
GAMMA MU, Muhlenberg College,
Allentown, Pa.
GAMMA NU, Georgia State College of
Business ADM, Atlanta, Ga.
GAMMA XI, Dickinson State College,
Dickinson, N. D.
GAMMA OMICRON, Shurtleff College,
Alton, Ill.
GAMMA PI, Tift College,
Fayette, Ga.
GAMMA RHO, Northwestern State College,
Alva, Okla.
GAMMA SIGMA, Cascade College,
Portland, Ore.
GAMMA TAU, University of South
Carolina, Columbia, S. C.
GAMMA UPSILON, Northern Illinois
University, DeKalb, Ill.
GAMMA PHI, Rocky Mountain College,
Billings, Mont.
GAMMA CHI, Southwestern State College,
Weatherford, Okla.
GAMMA PSI, Roanoke College,
Salem, Va.
GAMMA OMEGA, Montana State College,
Bozeman, Mont.
DELTA ALPHA, University of New
Brunswick, Fredericton, N. B., Canada
DELTA BETA, Alma College,
Alma, Mich.
DELTA GAMMA, Alderson-Broaddus
College, Phillippi, W. Va.

DELTA DELTA, Hampden-Sydney College,
Hampden-Sydney, Va.
DELTA EPSILON, North Central College,
Naperville, Ill.
DELTA ZETA, University of Dubuque,
Dubuque, Iowa
DELTA ETA, Northwestern State College,
Natchitoches, La.
DELTA THETA, State Teachers College,
Minot, N. D.
DELTA IOTA, Ouachita College,
Arkadelphia, Ark.
DELTA KAPPA, Baylor College,
Belton, Texas
DELTA LAMBDA, Arizona State College,
Tempe, Ariz.
DELTA MU, Winthrop College,
Rock Hills, S. C.
DELTA NU, Florida Southern College,
Lakeland, Fla.
DELTA XI, Rensselaer Polytechnic Institute,
Troy, N. Y.
DELTA OMICRON, Doane College,
Crete, Neb.
DELTA PI, Missouri School of Mines,
Rolla, Mo.
DELTA RHO, Trinity College,
Hartford, Conn.
DELTA SIGMA, Bethel College,
North Newton, Kan.
DELTA TAU, Ursinus College,
Collegeville, Pa.
DELTA UPSILON, Texas Christian
University, Fort Worth, Texas
DELTA PHI, Slippery Rock State Teachers
College, Slippery Rock, Pa.
DELTA CHI, Panhandle A&I and Mech.
College, Goodwell, Okla.
DELTA PSI, Mississippi State College,
Columbus, Miss.
DELTA OMEGA, Judson College,
Marion, La.
ZETA ALPHA, Abilene Christian College,
Abilene, Texas
MANUAL ARTS PLAYERS, Stout State
College, Menomonie, Wis.
ZETA GAMMA, Simpson College,
Indianola, Iowa
ZETA DELTA, Arkansas State College,
Conway, Ark.
ZETA UPSILON, Delta State Teachers
College, Cleveland, Miss.
ZETA ZETA, Bethany College,
Lindsborg, Kan.
ZETA ETA, University of Pittsburgh,
Pittsburgh, Penna.
ZETA THETA, Hardin Simmons University,
Abilene, Texas
ZETA IOTA, Drexel Institute of Tech.,
Philadelphia, Pa.
ZETA KAPPA, College of the Ozarks,
Clarksville, Ark.
ZETA LAMBDA, Central College,
Fayette, Mo.
ZETA MU, Ashland College,
Ashland, Ohio
ZETA NU, Armstrong College,
Berkeley, Calif.
ZETA XI, La Verne College,
La Verne, Calif.
ZETA OMICRON, Hendrix College,
Conway, Ark.
ZETA PI, Mercer University,
Macon, Ga.
ZETA RHO, State Teachers College,
Florence, Ala.
ZETA TAU, Texas Western College,
El Paso, Texas
ZETA UPSILON, Heidelberg College,
Tiffin, Ohio
ZETA PHI, Eastern Teachers College,
Richmond, Ky.
ZETA CHI, Union College,
Barbourville, Ky.
ZETA PSI, Ball State College,
Muncie, Ind.
ZETA OMEGA, Women's College of N. C.,
Greensboro, N. C.
ETA ALPHA, Marietta College,
Marietta, Ohio
TENN ETA, Milligan College,
Milligan College, Tenn.
KY. LAMBDA, Kentucky Wesleyan College,
Owensboro, Ky.
VT. ETA, Norwich University,
Northfield, Vermont
ETA BETA, Carson Newman College,
Jefferson City, Tenn.

ETA GAMMA, Virginia Polytechnic Institute, Blacksburg, Va.
 ETA DELTA, Central State Teachers College, Stevens Point, Wis.
 ETA EPSILON, Spring Hill College, Mobile, Ala.
 ETA ZETA, Upsala College, East Orange, N. J.
 ETA ETA, Mary Washington College, Fredericksburg, Va.
 ETA THETA, Washburn University, Topeka, Kan.
 ETA IOTA, West Texas State College, Canyon, Texas
 ETA KAPPA, Northern Montana College, Havre, Montana
 ETA LAMBDA, E. Montana College of Ed., Billings, Mont.
 ETA MU, Butler University, Indianapolis, Ind.
 ETA NU, Meredith College, Raleigh, N. C.
 ETA XI, Thiel College, Greenville, Pa.
 ETA OMICRON, Carthage College, Carthage, Ill.
 ETA PI, Mississippi State College, State College, Miss.
 ETA RHO, West Liberty State College, West Liberty, W. Va.
 ETA SIGMA, State Teachers College, Troy, Ala.
 ETA UPSILON, Bridgewater College, Bridgewater, Va.
 ETA PHI, Youngstown College, Youngstown, Ohio
 ETA CHI, Pacific University, Forest Grove, Ore.
 ETA PSI, Furman University, Greenville, S. C.
 ETA OMEGA, Harding College, Searcy, Ark.
 THETA ALPHA, Glenville State College, Glenville, W. Va.
 THETA BETA, Georgia State College for Women, Milledgeville, Ga.
 THETA GAMMA, La Grange College, La Grange, Ga.
 THETA DELTA, The University of Tennessee, Knoxville, Tenn.
 THETA EPSILON, McPherson College, McPherson, Kan.
 THETA ZETA, State Teachers College, Lock Haven, Pa.
 THETA ETA, Hood College, Frederick, Md.
 THETA THETA, Waynesburg College, Waynesburg, Pa.
 THETA IOTA, Western Carolina College, Cullowhee, N. C.
 THETA KAPPA, San Francisco State College, San Francisco, Calif.
 THETA LAMBDA, Georgia State Teachers College, Collegeboro, Ga.
 THETA MU, University of Minnesota, Duluth, Minn.
 THETA NU, Oakland City College, Oakland City, Ind.
 THETA XI, George Peabody College, Nashville, Tenn.
 THETA OMICRON, Texas Wesleyan College, Fort Worth, Texas
 THETA PI, Pacific Lutheran College, Parkland, Wash.
 THETA RHO, Whitworth College, Spokane, Wash.
 THETA SIGMA, Missouri Valley College, Marshall, Mo.
 THETA TAU, Southwestern Louisiana Institute, Lafayette, La.
 THETA UPSILON, Radford State College, Radford, Va.
 THETA PHI, Susquehanna University, Selingsgrove, Pa.
 THETA CHI, Eastern Oregon College, La Grande, Ore.
 THETA PSI, Hastings College, Hastings, Neb.
 THETA OMEGA, Wake Forest College, Winston-Salem, N. C.
 IOTA ALPHA, Pembroke State College, Pembroke, N. C.
 IOTA BETA, River Falls State College, River Falls, Wis.
 IOTA GAMMA, Cedar Crest College, Allentown, Pa.
 IOTA DELTA, McMurry College, Abilene, Tex.
 IOTA EPSILON, Bridgewater State College, Bridgewater, Mass.
 IOTA ZETA, Mercyhurst College, Erie, Pa.
 IOTA ETA, Clarkson College of Technology, Potsdam, N. Y.
 IOTA THETA, Moravian College for Women, Bethlehem, Pa.
 IOTA IOTA, Sam Houston State College, Huntsville, Texas
 IOTA KAPPA, Davidson College, Davidson, N. C.
 IOTA LAMBDA, Westmar College, Lemars, Iowa.
 IOTA MU, Arkansas A. M. and N. College, Pine Bluff, Ark.
 IOTA NU, Immaculata College, Immaculata, Pa.
 IOTA XI, Incarnate Word College, San Antonio, Texas
 IOTA OMICRON, State Teachers College, East Stroudsburg, Pa.
 IOTA PI, Our Lady of the Lake College, San Antonio, Texas
 IOTA RHO, Coe College, Cedar Rapids, Iowa
 IOTA SIGMA, State Teachers College, Towson, Maryland
 IOTA TAU, Longwood College, Farmville, Va.
 IOTA UPSILON, Belhaven College, Jackson, Miss.
 IOTA PHI, American University, Washington, D. C.
 IOTA CHI, Columbia College, Columbia, S. C.
 IOTA PSI, Manchester College, North Manchester, Ind.
 IOTA OMEGA, Davis-Elkins College, Elkins, W. Va.
 KAPPA ALPHA, Berry College, Mount Berry, Ga.
 KAPPA BETA, Quincy College, Quincy, Ill.
 KAPPA GAMMA, S. W. Missouri State College, Springfield, Mo.
 KAPPA DELTA, Bethel College, McKenzie, Tenn.
 KAPPA EPSILON, Briarcliff College, Sioux City, Iowa
 KAPPA ZETA, Fenn College, Cleveland, Ohio
 KAPPA ETA, Ferris Institute, Big Rapids, Mich.
 KAPPA THETA, Central Michigan State College, Mt. Pleasant, Mich.
 KAPPA IOTA, Southwestern College, Memphis, Tenn.
 KAPPA KAPPA, University of Portland, Portland, Ore.
 KAPPA LAMBDA, Flora MacDonald College, Red Springs, N. C.
 KAPPA MU, Oregon College of Education, McMinnville, Ore.
 KAPPA NU, West Virginia Institute of Technology, Montgomer, W. Va.
 KAPPA XI, Frostburg State College, Frostburg, Md.
 KAPPA OMICRON, Belmont College, Nashville, Tenn.
 KAPPA PI, University of Puerto Rico, Rio Piedras, P. R.
 KAPPA RHO, Georgetown College, Georgetown, Ky.
 KAPPA SIGMA, N. W. Missouri State College, Marville Idaho
 KAPPA TAU, Idaho State College, Pocatello, Idaho
 KAPPA UPSILON, Eastern New Mexico University, Portales, N. M.
 KAPPA PHI, Texas College of Arts and Ind., Kingsville, Texas
 KAPPA CHI, Lewis and Clark College, Portland, Ore.
 KAPPA PSI, Clemson College, Clemson, S. C.
 KAPPA OMEGA, St. Louis University, St. Louis, Mo.
 LAMBDA ALPHA, Blue Mountain College, Blue Mountain, Miss.
 LAMBDA BETA, Keene Teachers College, Keene, N. H.
 LAMBDA GAMMA, Middle Tennessee State College, Murfreesboro, Tenn.
 LAMBDA DELTA, Morris Harvey College, Charleston, W. Va.
 LAMBDA EPSILON, East Tennessee State College, Johnson City, Tenn.
 LAMBDA ZETA, Appalachian State College, Boone, N. C.
 LAMBDA ETA, Drew University, Madison, N. J.
 LAMBDA THETA, Anderson College, Anderson, Ind.
 LAMBDA IOTA, Midland College, Fremont, Neb.
 LAMBDA KAPPA, Wagner College, Staten Island, N. Y.
 LAMBDA LAMBDA, Arkansas State College, State College, Ark.
 LAMBDA MU, Wartburg College, Waverly, Iowa
 LAMBDA NU, Mississippi Southern College, Hattiesburg, Miss.
 LAMBDA XI, Ft. Hays Kansas State College, Hays, Kan.
 LAMBDA OMICRON, Elon College, Elon, N. C.
 LAMBDA PI, Villanova University, Villanova, Pa.
 LAMBDA RHO, Central State College, Edmond, Okla.
 LAMBDA SIGMA, South Dakota State College, Brookings, S. D.
 LAMBDA TAU, Mundelein College, Chicago, Ill.
 LAMBDA UPSILON, State Teachers College, Mansfield, Pa.
 LAMBDA PHI, Dickinson College, Carlisle, Pa.
 LAMBDA CHI, University of Omaha, Omaha, Neb.
 LAMBDA PSI, Tusculum College, Greenville, Tenn.
 LAMBDA OMEGA, State Teachers College, Oneonta, N. Y.
 MU ALPHA, Hillsdale College, Hillsdale, Mich.
 MU BETA, Emory University, Emory University, Ga.
 MU GAMMA, Northeastern State College, Tahlequah, Okla.
 MU DELTA, New Mexico A. & M. College, State College, New Mexico.
 MU ETA, American University, Cairo, Egypt
 MU EPSILON, Adams State College, Alamosa, Colo.
 MU ETA, Texas State College, Commerce, Texas
 MU THETA, John Carroll University, Cleveland, Ohio
 MU IOTA, Oswego State College, Oswego, N. Y.
 MU KAPPA, Sacramento State College, Sacramento, Calif.
 MU LAMBDA, Western Ky. State College, Bowling Green, Ky.
 MU MU, Beaver College, Jenkintown, Pa.
 MU NU, Loyola University, Chicago, Ill.
 MU XI, Boston University, Boston, Mass.
 MU OMICRON, Memphis State College, Memphis, Tenn.
 MU PI, Creighton University, Omaha, Neb.
 MU RHO, Rhode Island College of Education, Providence, R. I.
 MU SIGMA, Albright College, Reading, Pa.
 MU TAU, Xavier University, Cincinnati, Ohio
 MU UPSILON, Lyscoming College, Williamsport, Pa.
 MU PHI, Southern State College, Magnolia, Ark.
 MU CHI, Adelphi College, Garden City, L. I., N. Y.
 MU PSI, Hofstra College, Hempstead, N. Y.
 MU OMEGA, Duquesne University, Pittsburgh, Pa.
 NU ALPHA, State Teachers College, Livingston, Ala.
 NU BETA, Parsons College, Fairfield, Iowa
 NU GAMMA, Westminster College, New Wilmington, Pa.
 NU DELTA, Saint Mary's College, Winona, Minn.
 NU EPSILON, Evansville College, Evansville, Ind.
 NU ETA, Fordham College, New York, N. Y.
 NU ETA, Niagara University, Niagara University, N. Y.
 NU THETA, Hamilton College, Clinton, N. Y.
 NU IOTA, Hartwick College, Oneonta, N. Y.
 NU KAPPA, Austin College, Sherman, Texas
 NU LAMBDA, College of St. Scholastica, Duluth, Minn.
 NU MU, Peru State Teachers College, Peru, Nebraska
 NU NU, Loretto Heights College, Loretto, Colo.
 NU XI, St. Mary's Dominican College, New Orleans, La.
 NU OMICRON, Indiana State Teachers College, Indiana, Pa.
 NU PI, North Georgia College, Dahlonega, Ga.
 NU RHO, The College of Emporia, Emporia, Kan.
 NU SIGMA, Lake Forest College, Lake Forest, Ill.
 NU TAU, Carroll College, Waukegan, Wis.
 NU UPSILON, Kearney State College, Kearney, Neb.
 NU PHI, Morgan State College, Baltimore, Md.
 NU CHI, Northeastern University, Boston 15, Mass.
 NU PSI, Newark College of Rutgers University, Newark, N. J.
 NU OMEGA, College of St. Teresa, Winona, Minn.

SCARLET MASQUE CAST, Wabash College, Crawfordsville, Ind.
PI ALPHA, Eastern Michigan College, Ypsilanti, Mich.
PI BETA, Mount Mary College, Milwaukee, Wis.
PI GAMMA, McNeese State College, Lake Charles, La.
PI DELTA, Midwestern University, Wichita Falls, Texas
PI EPSILON, Gettysburg College, Gettysburg, Pa.
PI ZETA, Washington College, Chestertown, Md.
PI ETA, Birmingham Southern College, Birmingham, Ala.
PI THETA, Newark College of Engineering, Newark, N. J.
PI IOTA, Southern Oregon College of Education, Ashland, Ore.

PI KAPPA, David Lipscomb College, Nashville, Tenn.
PI LAMBDA, Illinois College, Jacksonville, Ill.
PI MU, Brooklyn College, Brooklyn, N. Y.
PI NU, Marygrove College, Detroit, Mich.
PI XI, Nebraska State College, Chadron, Nebr.
PI OMICRON, Lamar State College of Technology, Beaumont, Tex.
PI PI, Converse College, Spartanburg, S. C.
PI RHO, Friends University, Wichita, Kansas
PI SIGMA, Mercy College, Detroit, Mich.
PI TAU, Pennsylvania State Teachers College, Shippensburg, Pa.

PI UPSILON, Tenn. Polytechnic Inst. Cookeville, Tenn.
PI PHI, Springfield College, Springfield, Mass.
PI CHI, Mississippi College, Clinton, Miss.
PI PSI, State Teachers College at Westfield, Westfield, Mass.
PI OMEGA, Sterling College, Sterling, Kansas
RHO ALPHA, Pfeiffer College, Misenheimer, N. C.
RHO BETA, State Teachers College at Boston, Boston, 15, Mass.
RHO GAMMA, Martin Branch, Univ. of Tennessee, Martin, Tenn.
RHO EPSILON, Grambling College, Grambling, La.
RHO DELTA, Black Hills State Teachers College, Spearfish, S. D.
RHO ZETA, Northern Teachers College, Aberdeen, S. D.



ALPHA PSI OMEGA KEY AND BADGES

The Balfour Bluebook

The newest edition of this complete fraternity jewelry catalog brings to you selections for gifts and personal accessories. New crested rings, bracelets, tie bars, cuff links, jewel cases and initiation gifts.

Mail post card for free copy.

L. G. BALFOUR COMPANY
 ATTLEBORO, MASSACHUSETTS

Please send:
☐ Blue book
☐ Knitwear Flyer
☐ Ceramic Flyers

Date
 Samples:
☐ Stationery
☐ Invitations
☐ Programs
☐ Christmas Cards

Name

BALFOUR SERVICE . . . WORTHY OF YOUR TRUST

10% Federal Tax and any State or City Tax in addition.

PRICE LIST

Plain badge,	
1/10 double rolled gold plate	\$ 4.00
Plain standard badges, 10K gold	5.00
Close set pearl badge	8.50
Crown set pearl badge	12.50
Coat of arms guard, sterling or gold plated	1.50
Coat of arms guard, 10K gold, with 1 pearl	3.00
Key, 10K gold	7.50
Key, 1/10 10K double rolled gold plate, 10K ends	5.25

For Key-Pin, add \$1.00 to price.

10% Federal Tax and any State or City Tax in addition.

HOW TO ORDER:

Regulations: All orders for keys, pledges and recognitions to come in on official slips are to be approved by: Paul F. Opp, Box 347, Fairmont, West Virginia.

STATIONERY—PROGRAMS INVITATIONS

Samples on Request

Official Jeweler to
 Alpha Psi Omega

L.G. Balfour COMPANY

Attleboro, Massachusetts

An Educational Magazine for Directors, Teachers and Students of Dramatic Arts

Published for the advancement of dramatic arts in education and recreation, DRAMATICS is edited as an educational service for teachers whose duties include the direction of plays, pageants, assembly programs, and the sponsorship of dramatics clubs and classes. It is well adapted to the needs of recreational centers, church drama groups, children's theatres, college drama departments and libraries. DRAMATICS is especially recommended for high school dramatics classes and clubs.

A subscription for DRAMATICS brings you a wealth of articles on the following subjects:

ACTING	MAKE-UP	STAGE CREWS
REHEARSALS	HANDBILLS	STAGECRAFT
COSTUMING	PLAY SELECTION	LIGHTING
CASTING	PUBLICITY	DESIGNING
ORGANIZATION OF DRAMATICS CLUBS	DRAMA FESTIVALS	
HOW TO TEACH DRAMATICS	THEATRE HISTORY	

DEPARTMENTS

RADIO AND TELEVISION	THEATRE AND MOVIES
THEATRE FOR CHILDREN	PLAYS OF THE MONTH
BRIEF VIEWS OF PLAYS AND BOOKS	

Detach Here

19

THE NATIONAL THESPIAN SOCIETY

College Hill Station

Cincinnati 24, Ohio

Gentlemen:

Please enter my (our) subscription for DRAMATICS for which I (we) enclose

U.S.A. \$2.50 for one year \$4.75 for two years \$6.00 for three years

Canada \$2.75 for one year \$5.25 for two years \$7.00 for three years

Foreign \$3.00 for one year \$5.75 for two years \$7.50 for three years

Name _____

Address _____

City and Zone _____ State _____

PUBLICATIONS FOR TEACHERS, DIRECTORS, AND STUDENTS OF DRAMATIC ARTS

- THE HIGH SCHOOL DRAMA COURSE** by Willard J. Friederich. Head, Drama Department, Marietta College, Marietta, Ohio. A complete and detailed syllabus for teaching the Dramatic Arts in secondary schools. .60c
- A SUGGESTED OUTLINE FOR A COURSE OF STUDY OF DRAMATIC ARTS IN THE SECONDARY SCHOOL (ETJ-1950).** Compiled by a special sub-committee for the Committee on Secondary Schools of the AETA 75c
- DRAMATICS DIRECTOR'S HANDBOOK.** (Revised Edition). Edited by Ernest Bavely. Contains a comprehensive discussion on how to teach dramatics at the secondary school level by Katherine Ommanney, a thorough discussion on the organization of a high school dramatics club, and articles on play standards, organization of the production staff, play rehearsal schedule, publicity, preparation of handbills, etc. 1.00
- ARENA STAGING** by Ted Skinner, Chairman, Department of Speech, Texas College of Arts and Industries, Kingsville. Contents: Housing; Lighting Equipment; Lighting Control; Scenery, Properties, Sound; Make-up and Costuming; Directing; Acting; Publicity, Promotion, Performance. 60c
- HIGH SCHOOL THEATRE** by Robert W. Ensley, Indiana (Pa.) State Teachers College. Contents: The Play's the Thing, The Hour of Decision, Rehearsal, Building Efficient Stage Crews, Dressing the Stage, And There Shall Be Light . . . Control, Getting the Hay in the Barn, First Nights 60c
- HISTORY OF THE THEATRE TO 1914** by Arthur H. Ballet, University of Minnesota. Contents: The Classic Theatre; Greece and Rome, Medieval Theatre, Elizabethan England, Restoration England, European Theatre in Transition, Nineteenth Century England, Early American Theatre, The American Theatre to World War I 60c
- HISTORY OF THE THEATRE (Finis)** by Arthur H. Ballet, University of Minnesota. Contents: Theatre Today in Europe, Theatre Today in France, Theatre Today in the Orient, Theatre Today in England, Theatre Today in the United States (Part I), Theatre Today in the United States (Part II), The Non-professional Theatre in the United States, A Short History of the Theatre: Overview 60c
- ELEMENTS OF PLAY DIRECTION** by Delwin B. Dusenberry, Speech Dept., Temple University, Philadelphia, Pa. Contents: A Play with a Soul, Selecting the Play, Casting the Play, Rehearsal Procedures: General Blocking, Specific Business and Picturization, Directing in the Round, Directing the Musical Comedy, Looking Backward 60c
- FROM FILLETS TO FLAPPERS** (A History of Costumes) by Charles R. Trumbo, Bartow, Fla., High School. Contents: Costumes of Ancient Greece, Costumes of Ancient Rome, Costumes of the Middle Ages, Costumes of the Elizabethan Era, Costumes of the Eighteenth Century, The Victorian Age, The Gay Nineties, Came the Flapper 60c
- PERIOD FURNITURE AND HAND PROPS** by Charles R. Trumbo, Bartow, Fla., High School. Contents: Egyptian, Greek and Roman, The Middle Ages, The Elizabethan Period, The Seventeenth Century, The Eighteenth Century, The Victorian Age 60c
- ORAL INTERPRETATION (NEW)** by Leslie Irene Coger, Professor of Speech and Dramatic Arts, Southwest Missouri State College, Springfield, Missouri. Contents: So You Want to Read Aloud, Let's Tell a Story, So You Want to Read a Play, Let's Give a Book Review, So You Want to Make Them Laugh, Let's Give a Reading Recital, Let's Have a Readers' Theater 60c
- A HISTORY OF THE AMERICAN MUSICAL THEATRE (To 1920) (NEW)** by Delwin B. Dusenbury, Temple University, Philadelphia, Pennsylvania. Contents: The Beginning: From "Black Face" to "The Black Crook," A Gay Galaxy of Stars, The Influence of Gilbert and Sullivan, The Operetta: Vienna to Victor Herbert, Variety and Vaudeville, A Review of Revues, American Musical Comedy: 1900-1920, American Musical Theater: Production Problems 75c
- COSTUMES WORN BY ROYALTY (NEW)** by Charles R. Trumbo and Pollyann. Mr. Trumbo is Thespian Regional Director for Central Florida and sponsor of Thespian Troupe 728, Barlow, Florida, High School. Contents: From Matilda of Flanders to Eleanor of Aquitaine, From Berengaria of Navarre to Anne of Bohemia, From Isabella of Valois to Margaret of Anjou, From Elizabeth Woodville to Katherine of Aragon, From Katherine of Aragon to Anne Boleyn, From Jane Seymour to Anne of Cleves, From Katherine Howard to Mary Tudor, The Great Elizabeth 60c

*Write for Descriptive circular of twenty additional publications
about the Theatre.*

Please Include Remittance With Your Order.

THE NATIONAL THESPIAN SOCIETY

COLLEGE HILL STATION

CINCINNATI 24, OHIO