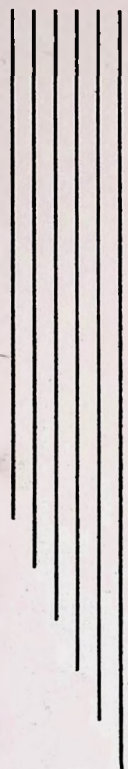


The PLAYBILL



1946

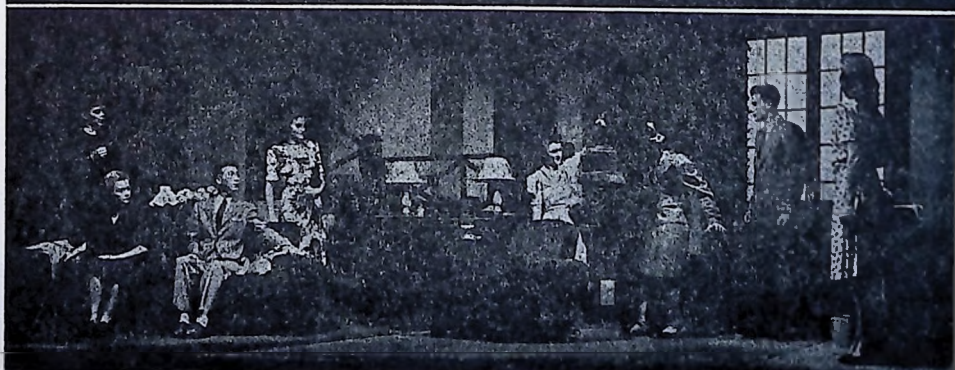
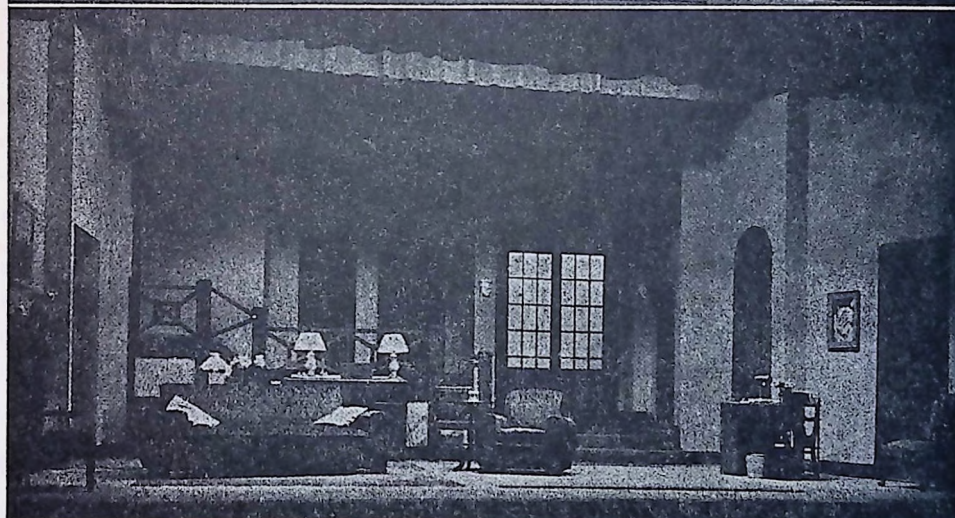


TABLE OF CONTENTS

	Page
Power Behind the Scenes.....	3
Summary of Our Wartime Productions.....	4
Let's Do A Children's Play.....	6
The Birch Grove Theatre.....	7
Central Staging Experiment.....	9
Some Successes of 1945-46.....	12
Using Wigs in Make-Up.....	14
"Once More, Please".....	15
Make Social Events a Tradition.....	16
Chicago Selected as Convention City.....	19
Plays at Special Royalty Rates.....	20
Cast Reports.....	23
Directory of Officers and Chapters.....	41

COVER PICTURE

Staff, setting and scene from "GUEST IN THE HOUSE." Theta Tau Chapter, Southwestern Louisiana Institute, Lafayette, Louisiana. Prof. Verne Powers, Director.

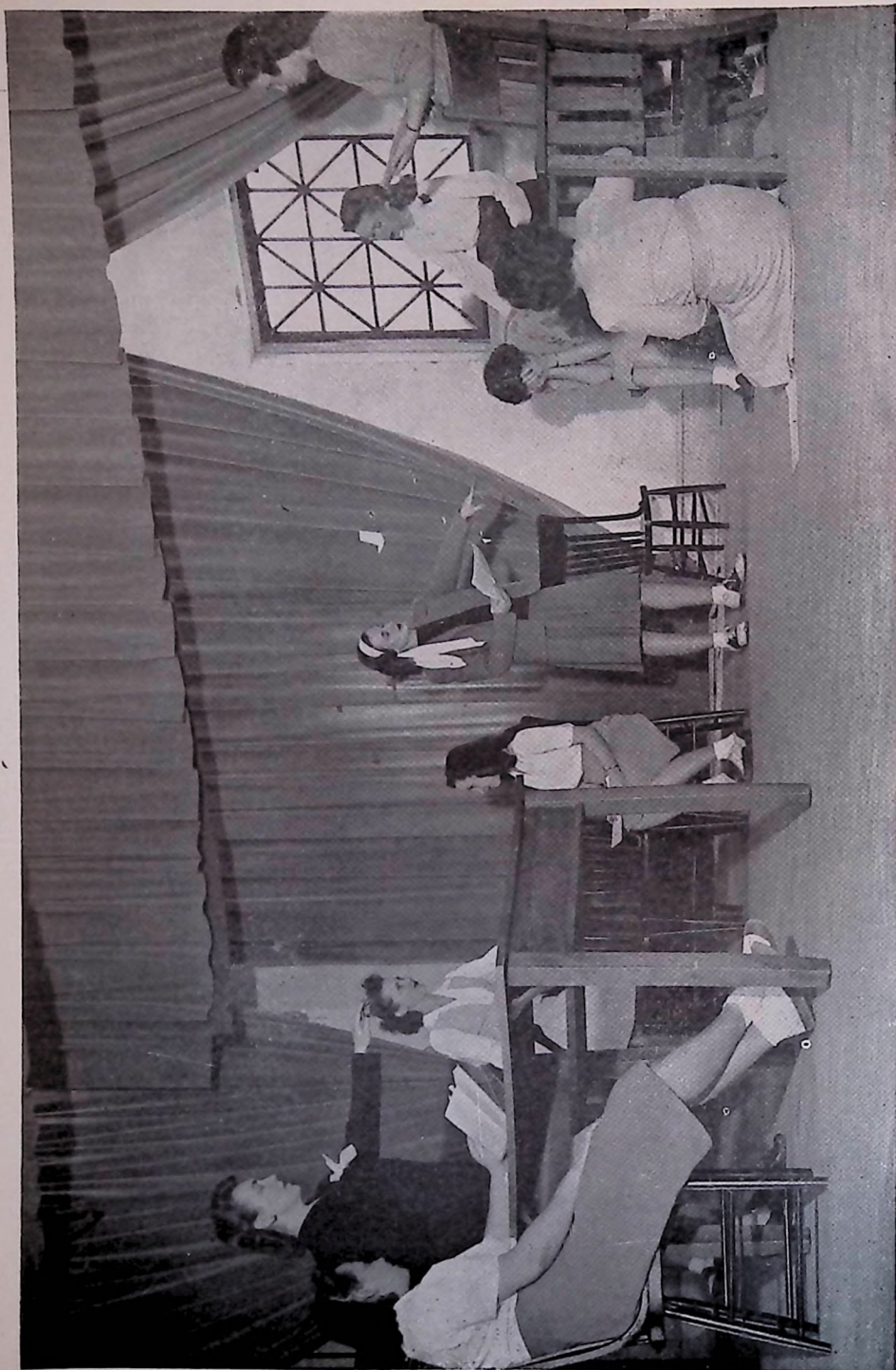
THE PLAYBILL

A Magazine Devoted to College Plays and How to Stage Them

PAUL F. OPP, Editor



Scene from "Nine Girls," Central College, Conway, Ark. Miss Judith Mayes, director of dramatics.



Rehearsal scene from "For The Love of Allah."
Merry Hardin-Taylor College, Belton, Tex. Miss Emilie Johnson, director.

The PLAYBILL

Published Annually

ALPHA PSI OMEGA DRAMATIC FRATERNITY

Dr. P. F. Opp, Grand Business Manager, Box 347, Fairmont, W. Va.

(Address Communications to Business Manager)

The purpose of THE PLAYBILL is to afford colleges and university dramatic organizations opportunity to acquaint themselves with what is being done by their contemporaries and to serve the Fraternity as an official organ.

"The Power Behind The Scenes"

By Prof. Verne Powers

* * * * *

Just because Shakespeare said 300 or more years ago that "the play's the thing," many in our educational theatre have reduced it to a much simpler, and (they think) more artistic generalization: "The Acting is the Thing!" Excellence in acting is of course desirable, but no more significant than excellence in the creation of its environment. It's true that no play is better than its acting, but why let a slipshod setting detract from your and the actors' collective effort? With power tools behind the scenes, you can have a well-built, effective setting that will be an inspiration to your actors, an enjoyment to your audiences, and a source of prestige to your organization.

The veterans, who are flocking back to college in droves may feel that they've got to "accelerate" to catch up on those lost months or years; and so they'll let everything but the textbooks go into the discard. I doubt it. There will be those who continue to look to the stage for vocational, avocational, and recreational opportunities. And here-in lies the real challenge to the educational and community theatre. Not all the people who are returning to the college halls are veterans of Guadalcanal, and Normandy. Many of them will be veterans of the tank lines and the bomber plants. These will have seen the industrial might that can crush a tyrannical foe. Will they be disappointed now at what they find in the under-equipped and over-crowded backstage areas of our college and community theatres? I think they will be! They know now what machines can do. They'll be wondering why the theatre is so slow! They'll be asking, "Where is the power saw, the jointer, the band saw, the jig, the lathe?" What can our answer be?

If this be propaganda to industrialize the theatre, then so be it. Shoptools have their places pretty well established in the American theatre. The trouble is that so many of our artists—in the long-haired sense of that word—feel that any robot can guide a board through a jig-saw. This is a luxurious superstition that the theatre cannot af-

ford. It takes intelligence and skill to operate power equipment in the scene shop; and it takes artistry and imagination to realize the vast new possibilities of this humming, leaping power at our fingertips. Arches, grillwork, properties, furniture, multi-set shows—the things we've always dreamed of, admired, and wanted for our own productions are now within our reach—as close as the button on the wall or the floor plug in our creaking stage.

The succeeding assertions are the conclusions of fifteen years of firsthand experience with actively producing groups—groups which did and did not have power equipment. They are offered here for what value they might have.

1. Power tools save time. Items demanding construction can be completed in from forty to sixty per cent less time. This means more time for your actors and your classes.

2. Power tools save money. Stage units built with precision tools fit together better, stay together longer, and can be renovated, remodeled, and reused easier.

3. Power tools mean better stage settings—and more of them. Levels, steps, ramps, columns, arches, railings, and exterior settings can be "dreamed up" and realized with power equipment.

5. Power tools mean competence and confidence to you and your mechanical staff. For a further detailed "slant" on this value, look at your 1944 PLAYBILL, "The All-Woman Stage Crew."

Thus is rested the case for power tools. May it not rest in peace! Play production is not "dirty" work. If the educational and community theatre is to grow and prosper, we've got to do more than admit this; we must proclaim it! Let's remember that there are plenty of people in this country who don't care about acting but who thrill to the joy of creative, cooperative accomplishment. The stage, with all of its glamor and excitement, can offer them a full measure if we but give it a chance in an up-to-date, power-equipped scene shop.

SUMMARY OF WARTIME PRODUCTIONS

By Waldo W. Braden, Omega
Louisiana State Univ.

• • •

Now that the perplexing war years are passed, perhaps a summary of our activities during those years will be of value. Too vividly many of us remember the search for all-girl shows, the casting from limited personnel, and the building of sets out of left-overs. However, in spite of all the trials and tribulations, I think Casts of Alpha Psi Omega have a record of which they may be justly proud. Using the Cast Reports as a source, I present the following summary:

The 1942-43 Season

Total cast reports	87
Total long productions	190
Total different long productions	114
Number of productions presented by chapters:	

Three percent gave no productions
Twenty-nine percent gave one production
Thirty percent gave two productions
Twenty-two percent gave three productions
Fifteen percent gave four or more

The most popular three-act plays: "Arsenic and Old Lace" (12), "Letters to Lucerne" (17), "Ladies in Retirement" (8), "Watch on the Rhine" (5).

One-act plays were presented by fifty-one chapters, thirty of which gave three or more.

The 1943-44 Season

Total cast reports	84
Total long productions	186
Total different productions	105
Number of productions presented by chapters:	

Thirteen percent produced no productions
Sixteen percent presented one production
Thirty-one percent presented two productions
Twenty-one percent presented three productions
Nineteen percent presented four or more

The most popular three-act plays: "Cry Havoc" (15), "Ladies in Retirement" (11), "Letters to Lucerne" (11), "Nine Girls" (9), "Brief Music" (6), "Junior Miss" (5).

One-act plays were presented by thirty-five chapters, eighteen of which gave three or more.

The 1944-45 Season

Total cast reports	70
Total long productions	156
Total different long productions	113
Number of productions presented by chapters:	

Eight percent presented no long productions
Sixteen percent presented one long production
Thirty-one percent presented three long productions
Thirty-six percent presented four or more productions
Nine percent presented four or more productions.

The most popular three-act plays: "Arsenic and Old Lace" (5), "Ladies in Retirement" (4), "Our Town" (4), "Papa Is All" (4), "Tomorrow the World" (4).

One-act plays were presented by thirty-nine chapters, twenty-six of which gave three or more.

The number of the productions presented by the Casts each year compares favorably with the prewar seasons of 1938-1939 and 1939-1940. Only a slight tendency to reduction of numbers was observed.

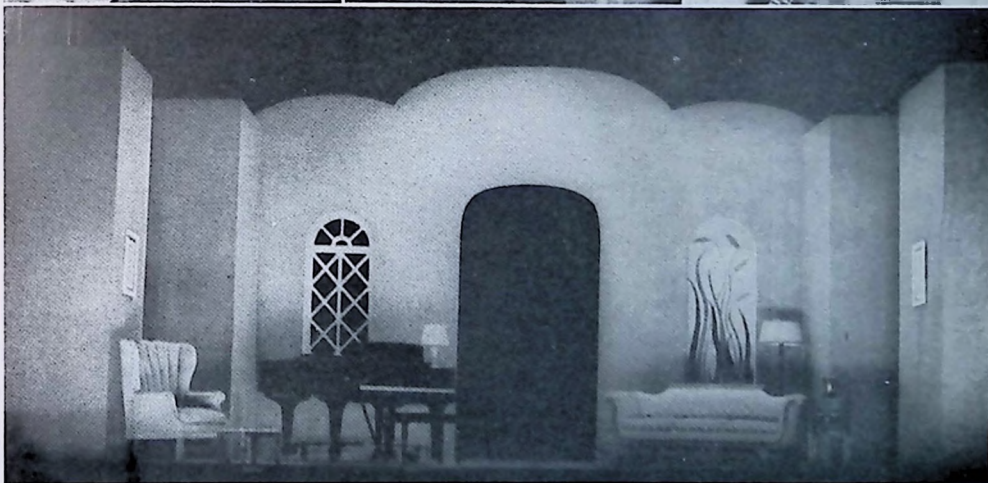
If the information were available, I am of the opinion we would discover that many chapters attempted to present as many productions as before the war, but they selected shows that involved smaller groups of students.

Originally in an effort to throw light on the quality of our productions I checked the number of Burns Mantle "best plays" presented. A comparison of the two earlier seasons with those of the war years is enlightening. For the year 1938-39, the percent of total productions from Burns Mantle was 18; for 1939-40, 28 per cent; 1942-43, 35 per cent; 1943-44, 27 per cent; and 1944-45, 37 per cent.

If we were to judge on this basis alone, there is little indication that there has been a noticeable decrease in the quality of plays selected for presentation. I realize, of course, that many other items should be considered in attempting to appraise the quality of the plays. Noteworthy is the fact that several chapters continued their custom to present Shakespeare. No doubt Shakespeare will be increasingly popular this season.

One surprising trend in our war time program was the number of serious productions presented. Before the war, the Casts presented about two light plays for every serious one. I had surmised that light plays would be increasingly more popular due to the desire to escape from the war. But the popularity of "Cry Havoc," "Letters to Lucerne," "Tomorrow the World," and "Watch on the Rhine" reflects the efforts of the Casts to do their part in heightening the war fervor.

The Cast reports provide the chapters with an excellent inter-school contact. From them we may get many new ideas, and we may compare our own programs with those of other schools. Now that the war is passed, I hope we will have a far greater number of Cast reports.



Top: Setting for "Junior Miss," (center), scenes from the play. Bottom: Three-minute setting for acting class projects, Verne Powers, director, Southwestern Louisiana Institute.

Let's Do A CHILDREN'S PLAY!

By Frances M. Bailey • • •

If you have never done a children's play, you have missed a lot of enjoyment that doesn't come from doing a play for adults. The reaction of an audience of youngsters is entirely different, their enjoyment seems to reach out to those performing.

This past season at Furman University we decided to do a play for children, and "Heidi" was selected as the play. So many students had shown an interest in dramatics that we used the double cast idea. Two people were cast for every character with the exception of the Alm Uncle and in rehearsal the cast on the stage changed every few minutes. Thus, no one knew with whom he was finally to play nor was he assured of a chance to play unless he measured up to standard. This provided an opportunity for twenty-five students to participate in a college performance. For many of them it was their first experience.

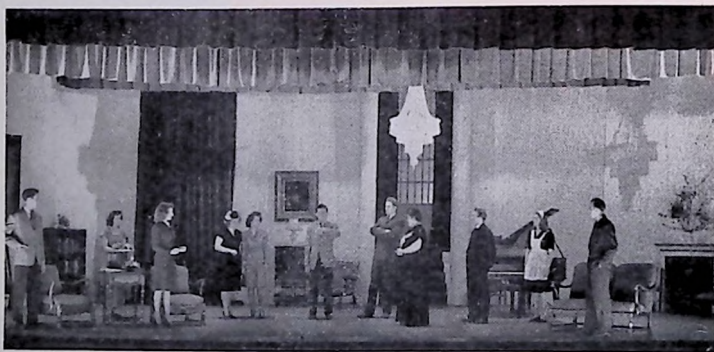
In order to help keep the interest and to give variety, three sets were used. These varied scenes gave opportunity for expression of a quite different nature than the plays we had been doing and the snow-covered peaks caught the eye of most everyone in the audience. Cut down sets were used for the Seseman's drawing room and a rustic log interior for Peter's cottage.

The cast for this play includes not only people but goats, kittens and a turtle. We secured a goat about six weeks old and just keeping it about the campus was excellent publicity. Our goat was young enough to love attention and it came out of its little goat house on the stage every time anyone came near it. We gave an opportunity after each

performance for the children to come up on the stage and pet the goat or see the kittens and turtle. Many children came back again for each performance as did some adults.

Children's audiences are much the same the world over except when it comes to a special kind of children's audience. We gave our play three times here at the college, and then took it to the Shriner's Hospital for Crippled Children. It was a little difficult at first for the students to swallow the lump in their throat as we performed in a regular room in the middle of the afternoon and the actors saw the expressions on the children's faces. Imagine, if you will, three or four rows of little chairs filled with little people, all with their crutches beside them; then two or three rows of children's wheel chairs, and on one side a row of stretcher cases. Doctors and nurses made equally as good listeners as the children. When the play was over the property girl carried the little goat out among the crippled children to touch and to pet it. One colored boy on a stretcher wanted to see the turtle.

The letters and expressions of appreciation from the hospital, the schools, the parents and the children were sufficient proof that a children's play definitely has a place in the community. If you haven't included such a play in your season's program be sure to do so, as it is worth all the time and the effort. You may arrange the story yourself or buy copies of most of the popular stories that are already adapted for the stage. When arranging your program for next year, try a children's play. It's lots of fun.



Scene from "Nothing But the Truth," Miss Jane Ludgate, Director, Edinboro, Penna. State College.

BIRCH GROVE THEATRE

DON CATE, ETA CHI CAST

THE BIRCH GROVE THEATRE on the beautiful campus of Pacific University at Forest Grove, Oregon, is the only one of its kind on the Pacific Coast. In fact, it is one of the very few outdoor theatres in use in the United States.

It was back in 1942 when Director A. C. Hings-ton began a campaign for the theatre. With the help of Mr. Fred Mills, building superintendent of Pacific, and Ralph Shumm, business manager, Professor Hings-ton designed the theatre building and selected as its permanent location a long shaded spot surrounded by birch trees; hence the name Birch Grove.

The theatre is sufficiently equipped to handle almost any production. Modern lighting equipment and stage scenery are but a part of the theatre itself. A natural patio with flowering shrubs and flowers serve as a lounge between acts and at intermissions. The natural wooded glade has its advantages as an excellent place to produce Shakespearean or Greek drama.

The Theatre Workshop

Every year applications are received from interested students from all over the United States and Canada. Since the theatre workshop offers a concentrated study in all phases of the theatre, it was deemed wise to select only twenty-five applicants. This would mean that each student would be able to participate in several plays in

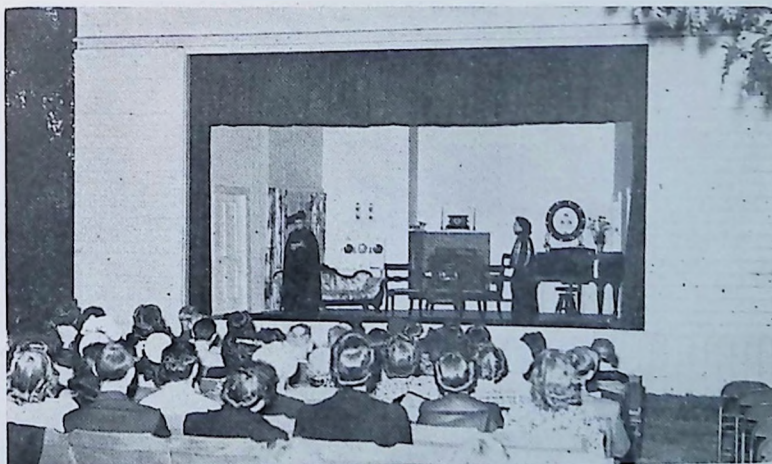
both production and acting, therefore giving them an opportunity for better training and experience. Students are selected on the basis of talent and ability, scholarship, interest in the theatre arts, and participation in plays.

This year, 1946, marked the first summer stock company in the history of Pacific University. Arrangements were made with Seaside, a Pacific Coast resort city, to bring the summer theatre troupe there during July and August. This plan gave Pacific University the only collegiate summer stock company on the Coast, presenting a new play each week for five weeks at the Birch Grove Theatre, and then a new play each week for five weeks at the Seaside Theatre.

Students who are enrolled for summer theatre are enrolled for no other courses. At the end of the ten weeks period they earn twelve semester hours of college credit in the field of drama. Classes and rehearsals make for a full day, and with productions in the evening, the summer theatre student really "lives" in the theatre.

During the 1945 season the following plays were presented: "Ladies in Retirement" by Percy and Dunham, "Fresh Fields" by Ivor Norvello, "Brief Music," Lavery, "Her Husband's Wife," A. E. Thomas, "Blythe Spirit," Noel Coward, and "A Murder Has Been Arranged" by Emlyn Williams.

Eta Chi Cast of Alpha Psi Omega Dramatic Fraternity was installed at Pacific University



The Birch Grove Theatre, Pacific University, during a performance.



Prof. A. B. Hingston, Pacific University, Director of the Birch Grove Theatre.

January 30, 1940 with ten charter members. Prof. H. H. Brockhaus was faculty director. Mr. Brockhaus, now working on his doctorate at the University of Wisconsin, spent several years in the armed forces.

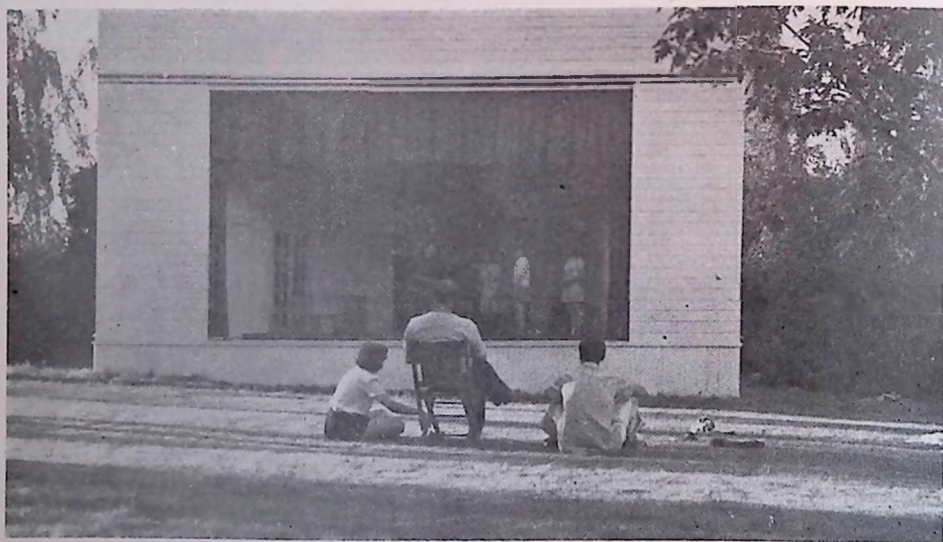
The Staff

The theatre staff consists of three regular members: Prof. Albert C. Hingston, Director, George Harding, Assistant Director, and Miss G. E. Jacques Wade in charge of costuming.

It was in 1941 that Mr. Hingston came to Pacific University as professor of speech and drama. He is a graduate of Washington State College with graduate work in the speech and drama departments of the University of Washington, and has spent most of his life in and around the theatre. For a period of time motion picture and radio work kept him busy. He has played many roles in plays, in operas, and in musical comedy as a featured tenor. It was in 1945 that he realized one of his big objectives in the completion of the Birch Grove Theatre. As a result, the great interest and enthusiasm of the students, faculty and Forest Grove residents have proved that the summer theatre program is a worthy one and that it will continue to grow.

Playwriting Contest Announcement

The Play House of Ferris Institute will have a contest of one-act plays with three prizes ranging from fifty to fifteen dollars. The three winning plays will be produced and widely advertised. Every resident of the United States will be invited to enter the contest. For specific information contact the president of The Play House, Mr. Russel Reed, Box 338, Big Rapids, Michigan.



The Birch Grove Theatre, the out-of-door theatre of Pacific University, Forest Grove, Oregon.

CENTRAL STAGING EXPERIMENT

By Marion McGuire

★ ★ ★ ★

Early in the second semester of the 1945-46 season, the Drama Workshop of Arizona State college considered the possibility of producing "Dover Road" with central staging. Our supplies of stage hardware, flat lumber and muslin had long been depleted. With an excellent cast of experienced "war veteran" actors available for the male character roles it seemed sensible to simplify the mechanics of the production and to place the emphasis on the basic art of acting. The application of the "circus" technique is, of course, a tried and ancient method of producing plays. The playing of little scenes in the medieval church with the congregation on every hand, the acting out of the lesson in the kindergarten in the midst of the class, the Elizabethan stage surrounded on three, and sometimes on four, sides by the audience, the experiments of Rinehardt in Berlin—all these are essentially examples of Central Staging. A large room or hall is the main requirement.

After making the necessary arrangements to use a large campus ballroom, we marked off a carpeted area in the center, approximately 14 by 18 feet. Carpeted aisles extended from each of the four corners to the actors entrances. Special overhead lighting was designed and installed by the campus electrical engineer. A fifteen hundred watt reflector with a 1500 watt bulb was suspended from an opening in the ceiling from which college dance decorations had previously hung. An effort was made to concentrate the light on the stage and to prevent glare in the eyes of any portion of the audience who would be seated on the four sides. To prevent shadows cast by the actors, 250 and 400 watt spotlights were installed at each of the four corners of the carpeted acting area. Extension cords were attached to a central switchboard at one side of the room.

The essential pieces of furniture were arranged in groups to suggest a living room-dining room combination effect. Low backed "love seats" were placed on both sides of one corner of the living room in order not to obstruct the view of the audience.

After six weeks of intensive rehearsing we were ready for the opening night performance. An audience of about 250 students, faculty and a few outsiders were seated in folding chairs that had been staggered in four rows on the four sides. A complete blackout took the place of a curtain. The actors rehearsed regularly with these blackouts and had become accustomed to finding their way quietly and accurately to their stage positions or

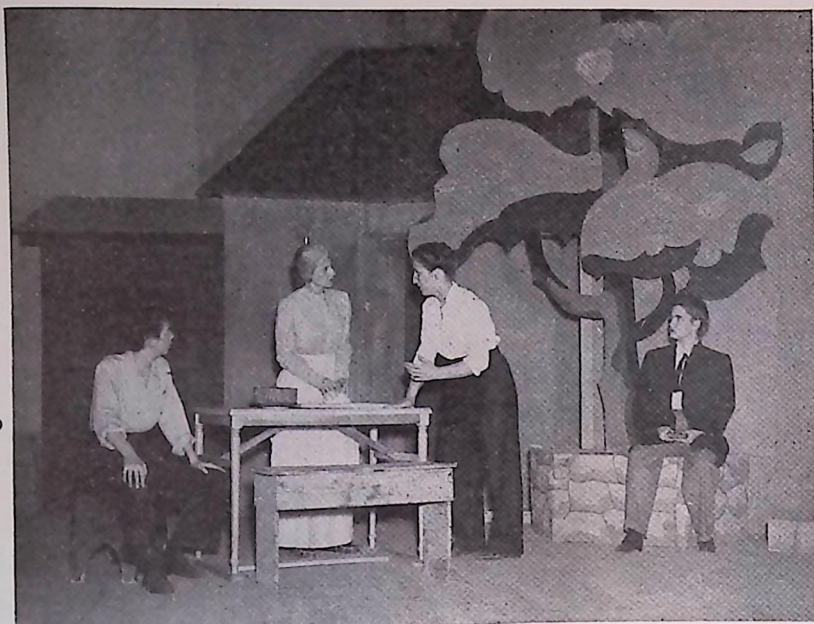
to the exits. So when the central overhead light came up Dominic and The Staff were in their places for the opening scene. As the play progressed Leonard and Anne appeared at the Northwest or front door entrance and approached the acting area along the carpeted aisle. The maid later escorted Anne along the Southwest carpeted aisle, leading to the white wing, or women's quarters. The Southeast aisle led to the Blue wing or men's quarters and the Northeast aisle to the



"Dover Road," presented by Central. Miss Marion McGuire, director.

kitchen wing. A real kitchen, fully equipped, was just outside this exit door and greatly facilitated the task of the production group responsible for supplying all the food and service for all the dinner courses and the varied English breakfast menus. During the blackout that followed each act the actors were allowed plenty of time to leave by the various exits before the houselights came up gradually. And our audience was delightfully surprised by the magical effect of this kind of opening and ending.

But it was not easy. We heartily agree with Glenn Hughes when he warns in his "Pent House Idea" pamphlet that "without the aid of scenic background and conventional stage atmosphere (including distance from the audience) the ordinary amateur actor is not a very effective instrument." In a central staging production he must be very good. He is thrown into the arena with nothing but his art and the words of the play, and to survive that ordeal he must be a good deal better than he usually is. We are very glad to report that our student actors were able to meet the challenge. The audience was delighted with the intimacy established and the laughter was more infectious and spontaneous than it had ever been in the auditorium.



Two scenes from "Family Portrait," directed by Miss Emilie Johnson, Mary Hardin Baylor College,
Delta Kappa Cast.



Scenes from productions of Cedar Crest College, Madeleine Skelly director. From top to bottom: "The Merchant of Venice," "Claudia," and "Ghosts" by Hendrik Ibsen.

SOME SUCCESSES OF 1945-1946

Staging Cyrano In A Unit Set---

Sister Mary Donatus, Immaculate College

We had long hoped to do *Cyrano de Bergerac*—but were waiting until we had a typical “Cyrano.” This year we found him—or shall I say—her, not only a “Cyrano,” but a cast that was a Director’s dream come true. But the setting! That was another problem. We have a little stage, 16 feet proscenium arch, 10 feet high, and—this is something to be grateful for—16 feet deep. How could we do *Cyrano* on that stage? There was the theatre in the first act, the pastry shop in the second, the balcony scene—we talked in whispers about that—the camp, and a convent garden.

To start with, we used triple arches cut in an old drop and painted brown. The stage could be the middle arch, so we built up the platform in the back, and with steps leading up to it, presto! we had a stage for the Hotel de Burgoyne! As background for this was a curtain through which appeared Monfleur, the actor and *Cyrano*’s victim. The other two arches provided the boxes for the ladies to look on the play, and seats for the gal-

lants, giving the impression that they were really seated on the stage in the best Shakespearian tradition! In front of the arches, we had the crowd surging back and forth through the door leading into the street by the Siene, and the flower girl’s stand. It was perfect!

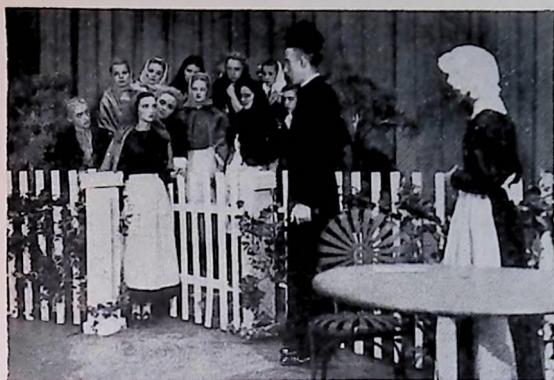
For the Pastry Shop, we removed the chairs on the different platforms, putting a large table on the middle one back of the large arch, and two smaller tables on different levels in the left and right arches. People came in and out of the shop from one table to another with perfect ease. *Cyrano*’s table, really Ragueneau’s desk, some stools for the Cadets were placed outside the arches where the action was unobstructed. Red curtains in the background, and red light, gave the warmth of the pastry shop and the friendliness of the good-natured proprietor.

The balcony scene was no trouble at all. Our honorary member, Mr. Francis X. Monville, donated two medieval doors, and a balcony, with an upper window through which streamed a gold light on the face of the romantic Roxane. The illusion was very fine indeed.

When we came to the camp, or the battle scene, we removed every prop from the platforms back



Scene from “*Cyrano de Bergerac*,” directed by Sister Mary Donatus, Immaculate College.



Scene 2, Act II, "The Song of Bernadette," Georgia State College for Women, Irma Stockwell, director.



"The Song of Bernadette," Hendrix College Little Theatre, Prof. Garrett L. Starnes, director.

of the arches, covered the steps with grass rugs, and we had the appearance of distant terraces. In front of the arches the cadets slept in peace, but we played the commands and the illusion of battle with its flag-waving scene on the terraces in the background, against a blue sky-drop.

The Convent Garden was the easiest of all. We dropped a cut-out foliage drop with an opening in the center between two large trees, over the brown arches, and they looked through the net like the arches of a cloister. The steps still grass-covered served to emphasize the terrace idea here also.

Finally, our three-arched Cyrano was quite well received, which we took to mean that the setting framed the play very well. There were no waits between scenes—the bane of so many amateur productions. If your cast wants to do Cyrano de Bergerac thus simplified, it will be an unforgettable experience.

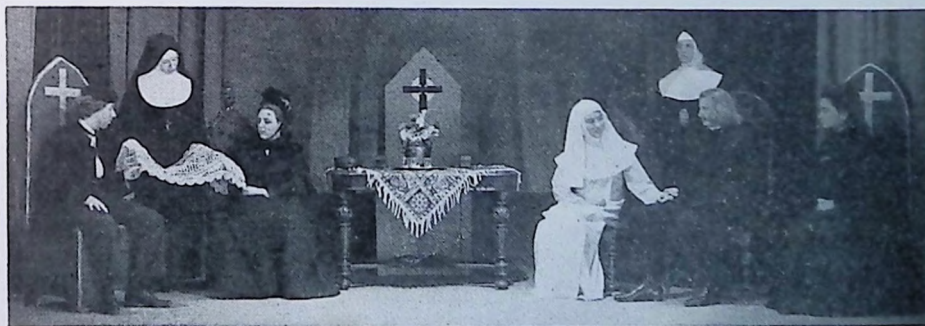
"The play's the thing"; let the concentration be on the players who are bringing to life the characters, not on the setting.

How Bernadette Was Presented At Keuka College

By Professor Mae H. Baker

Our feature play was Walter and Jean Kerr's dramatization of Franz Werfel's Bernadette. Prof. Kerr belongs to the dramatic department of Catholic University, Washington, D. C. This script gives a remarkable reflection of the beauty, simplicity and religious tone of the work, all condensed into three good playing acts. The scenes were in beautiful harmony because of the slides, which were in color and thrown by means of projectors on the back-drop, necessitating no long curtains.

My first acquaintance with the use of slides in this play was when I saw the production on Broadway. I was so deeply impressed by the atmosphere obtained that I visited backstage and learned of the slides. It was here that I learned that the slides were painted in color at Catholic University under the direction of Ralph E. Brown.



Scene from "The Song of Bernadette," directed by Prof. Mae H. Baker, Keuka College, Arlon Dramatic Club, Beta Omega Cast.

technical director. Professor Kerr's pamphlet on directing Bernadette is most helpful, and Mr. Brown's careful instructions pertaining to the making of the slides is invaluable.

When I returned to Keuka College I made a lengthy report on Bernadette and as a result it was chosen as our final production. The lead was given to Miss Mary Yaw, a senior speech major, who had been playing male roles for three years. She was very happy over the assignment.

It was our intention to rent the slides used on Broadway, but it seemed impossible to secure them and we made other plans. We were very much surprised at the last moment when we did secure them and they added materially to the production of the play.

I should like to emphasize that The Song of Bernadette is suitable for production in any college or university and is considered one of the most popular ever produced here.



Scene from "Bread," Iowa Wesleyan College. Dr. Waldo C. Braden, director.



"VIENNA LEGEND," production by Johns Hopkins Playshop, Paul Hinrichs, director. This play by Heddy Rossi, Kathryn Etn cast, will be staged at Ferris Institute this season, and will have a professional production in Switzerland.

Using Wigs In Make-up

By Dr. Harry Raymond Pierce

Berry College, Mt. Berry, Ga.

There is a great deal to be said about make-up for the stage in these days, when a modern school of acting advances the argument that wigs should seldom be used, because they can be detected from the audience, as wigs.

In an experiment in make-up made by the writer "The Passing of the Third Floor Back," was presented with the part of the stranger played by a young man of 22 years of age. In the first performance, the stranger was made up, employing a wig in this important character part. The second night of the performance, in order to satisfy some of the more modern critics of the drama, the character of The Stranger was made up by using his own hair, with a heavy coat of white grease paint and powder, but the hair line could not be changed to any great extent, so the result was a young man with white hair. The character, otherwise, was well represented, in voice and bodily action, but something of The Stranger, his spiritual manifestation, as could be detected even in photographs, was not there without the wig.

The conclusion may therefore be drawn that directors of college plays must spend more time on the actual study of make-up. If the audience can see the wigs, as of course they can, they must accept the picture as a whole, just as we do when we view a painting in an art gallery, for age must be depicted on the stage, just as it is in everyday life.

"ONCE MORE PLEASE"

By Charles Edwin Shank

Blue and amber and purple shadows covered the grassy floor of the outdoor stage. Crickets and all the late summer orchestra "pointed" the mood created by Orlando, Celia and Rosalynde.

"This last scene. Once more please; we're not right yet. We need to work for—"

"Yes," quoted Audry, "don't say it." For smoothness! Build for climax, oral and pictorial. Above all act with sincerity and sympathy and simplicity.

Though my forest scene is one of yesteryear, in this scene I learned when, how, where, to whom, why and what to communicate to my cast that would bring the proper result. Here it is, "Once more please."

Enthusiasm is like fire. It spreads. For the past twenty years I've directed many productions on the campus, beside conducting weekly meetings of our all-male Dramatic Club. These various groups were made up of engineering students. I've learned how to be enthusiastic. This, I know to be every dramatic director's "sine qua non."

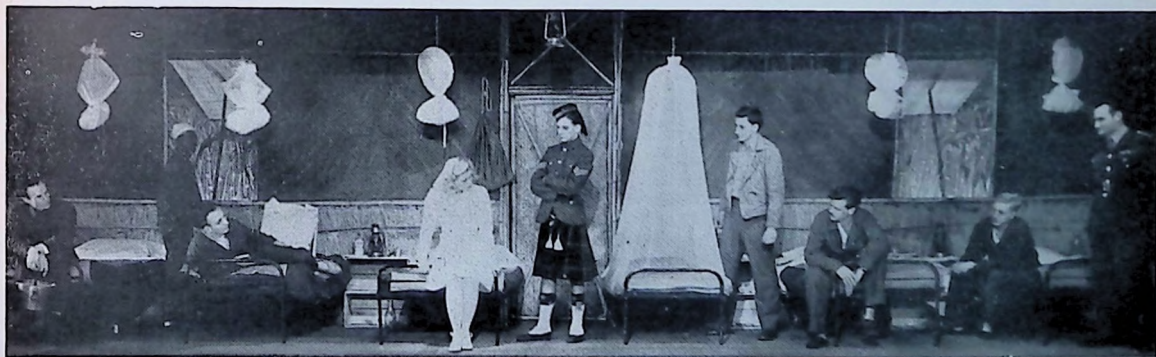
When working with returned GI's a sure fire mechanical technique is essential. How to walk, sit, fall, exit and enter. Natural shyness and self-consciousness is, believe it or not, the GI's persistent enemy but practical and interesting discussion

subjects help loose the spirit. Men welcome an open forum dealing with movies, i. e., why did you like the movie? Did it help you in any way? What did you learn? These are sure to bring forth many "Mr. Chairmans."

Dramatic Club meeting programs may be brightened by the inclusion of pantomime—single or group. There is material here for the performer, the audience and amateur critic! Also original sketches (you'll be surprised) one word plays, monologs, a scene from a current play or movie—cowboy or tough guy—are always welcome on our programs. Scenes, rehearsed and memorized, and one-act plays like "If Men Played Cards Like Women Do" and Cohan's "Jazz Trial" are all exhilarating and real fun in catching cues, building for climax and rhythm.

Today's G. I. audience is prepared for much better fare than they are receiving. They demand and need the theatre now. Any play if written, produced and acted with sincerity (truth) sympathy (understanding) and simplicity will be accepted and acclaimed on the plus side. We found this to be true when, assisted by talented girls of our community, we presented "Papa is All," "Snafu," "The Hasty Heart," "The Jazz Trial," an opry house revival and "As You Like It."

Any director who makes an honest effort to guide his group through the maze of these times with the three S's, is sure to be rewarded by a cheerful "O.K." when he says, "Once more please."



Scene from "The Hasty Heart," directed by Charles Edwin Shank, Zeta Psi Cast, Tri-State College.

Make Social Events A Tradition

By Subert Turbyfill—Canal Zone Jr. College

• • • • •

It is only sound psychology to use the social instinct to serve in our college dramatics program. All stage work is not glamorous, and if the dramatic director cannot offer proper incentives and rewards to get some of the unpleasant things done, he will have to do them himself. The director can use the social incentive of the dramatic honor society to get things done, and to raise the quality of the work; for the student knows that if the work is indifferently done, he will receive no credit for it toward membership in the fraternity. This social interest in the society may even be used to recruit promising dramatic students from surrounding high schools.

Students in the Canal Zone Junior College, on the banks of the Panama Canal, enroll in the Class in Dramatics in order to "make" Delta Psi Omega for one of several reasons, and a considerable number of those same students tell me that they want to be "in the fraternity" because of social events which it sponsors. Granting that this is a true statement of fact (and as faculty sponsor I am only too glad to grant that it is), the "traditional aspect of our social events is the largest single contributing factor to that feeling.

The first group in the Class in Dramatics, who supplied the first six charter members for The Panama Canal Cast of Delta Psi Omega, presented "The Moon is Down" on the Atlantic Side, and stayed at the Washington Hotel in Colon. After the chapter of the fraternity was established here, in the spring following, those same members again returned for a "Spring Party," with swimming in salt water and a dinner at which each person present performed, and thus the tradition of the party in the spring was started.

When the new police pistol range was built at the water's edge near Balboa, the first outside group to hold a "dry season" picnic on the new range was Delta Psi Omega of the Canal Zone Junior College. Now a school year would not be complete without a Delta Psi Omega "Dry Season" picnic. That picnic is in the nature of a party for college students, while the "Spring Party" is somewhat a "Rush Party" for the outstanding graduates in drama work from the two Canal Zone High Schools.

A new private dining room was opened in the Hotel Tivoli during the second year that the fra-

ternity was active in our college. It was intended for the use of government and federal officials. The first local group to give a dinner in the private dining room was the Delta Psi Omega with its first "Chris'tmas Dinner," and that dinner (with its centerpiece) is now a firmly established tradition with the fraternity and with the college.

The other "big" social event for the fraternity is the annual banquet given by the class in dramatics in honor of the Delta Psi Omega group, at the end of the theatre season. Each person who has had any connection with any dramatic production during the school year is entitled to attend that banquet, at which the newest pledges of Delta Psi Omega furnish the entertainment, and so a 100 per cent attendance has been noted at each of the "Theatre Banquets."

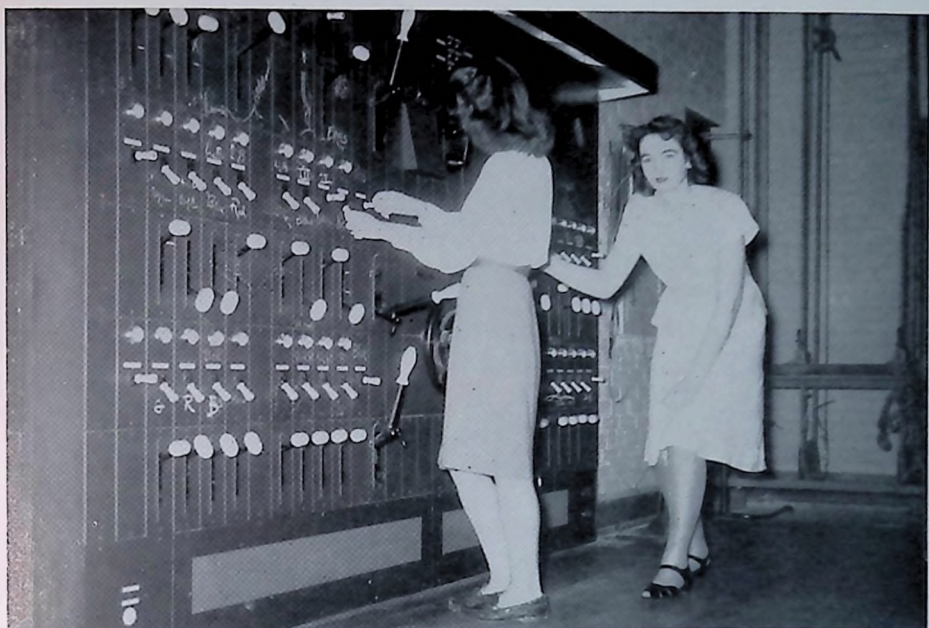
Of course, Delta Psi Omega has other social events during the school year. But these four affairs are now scheduled on the school activities calendar, which is released in the early fall each year. Students who attend the college here know that we will have the "Christmas Dinner" in December, the "Dry Season Picnic" in March, the "Theatre Banquet" in May, and the "Spring Party" in June.

Making the big social events traditional has aided the fraternity in the college here, and has made a very definite addition to the dramatic activity and the class in dramatics. I would like to recommend it as a policy for any chapter faculty sponsor who is looking for a new "promotion scheme."

—o—

A Dramatics Program for Champlain College

Miss Leora Weimer, Gamma Theta Chapter, formerly head of the Speech and Drama Department of Indiana Central College, is in charge of instituting the dramatics program in the newly organized college for veterans, Champlain College, Plattsburg, New York. This college is using the buildings and installations of a former army post at Plattsburg. Miss Weimer was one of the first directors to enter the service, and as a member of the Woman's Army Corps, served in Colorado, and Lexington, Virginia.



The switchboard of theatre, Northwestern State College, and a scene from "A Murder Has Been Arranged," Dr. Robert H. Capel, director of dramatics.



Scene from "Blithe Spirit," directed by Mrs. Edmund Nell, West Virginia Wesleyan College.

Chicago Selected As Convention City

Grand Rehearsal is Scheduled for December 30

The fourth national convention of the Alpha Psi Omega Dramatic Fraternity will be held, December 30, 1946, at the Hotel Sherman, Chicago. This is not only a central point for holding our Grand Rehearsal, but it will afford all faculty advisors and delegates who attend an opportunity to enjoy the programs of the National Theatre Conference, the National Educational Theatre Association, and the Speech Association of America. All of these organizations are holding their conventions this year in Chicago with their programs and exhibits utilizing the facilities of the Hotel Sherman. This program, covering every branch and phase of the speech arts, and the theatre arts, will be very instructive and entertaining to every teacher of speech and every director of drama. The best authorities in speech, drama, and radio from the United States and Canada will be heard in the group meetings.

By scheduling the Grand Rehearsal for December 30th, those attending may have the remainder of the time for attending the special convention programs in which they are most interested on Dec. 31 and Jan. 1. The regular attendance of many faculty members at the national speech and theatre convention has in the past assured a goodly attendance of faculty advisors as chapter delegates. Student members of the active chapters, as delegates and visitors, have always added much to the enthusiasm and interest of the national meetings, and their presence in large numbers is highly desirable. Registration for the entire four-day convention program will be \$2.50. There will be no fraternity registration fee but we hope to schedule a banquet or luncheon. A brief idea of the convention program is as follows:

Monday, December 30, 1946

- 8:30 A. M. Registration of delegates, Hotel Sherman
- 10:00 A. M. Opening of business session. Appointment of committees. Officers reports.
- 12:00 A. M. Luncheon
- 2:00 P. M. Business session
- 4:30 P. M. Adjournment

Dec. 31 to Jan. 1, 1947

This time is given over for attending the program of the National Theatre Conference and the program of the Speech Association of America.



Hotel Sherman, Chicago, Ill. Convention Headquarters

Special Royalty Rates Available On Plays

Chapters to Enjoy Special Rates on Many Plays During Season of 1946-1947

Many plays from authorized publishers at special rates will be available this year to all colleges in our national honor society. A special form is provided by the central office for making application for using any play on this list. It is always advisable to complete arrangements to use the play before beginning rehearsals. If chapters desire a special royalty on a play or a play not on this list, they should correspond directly with the publisher holding the copyright and royalty privileges. These plays are available to any theatre group of the college in which there is a chapter of our national fraternity.

Suggestions as to plays that should be added to the list, or suggestions as to plays that should be deleted from the list will be welcomed. Send all such suggestions to Grand Business Manager, Box 347, Fairmont, W. Va.

SAMUEL FRENCH

25 West 45th Street, New York City

Three-act Plays

	Catalogue Rates	Our Special Rates
Mr. Pim Passes By.....	\$50	\$35
Cry Havoc.....	50	35
The Dover Road.....	50	35
The Romantic Age.....	50	35
Death Takes a Holiday.....	50	40
The Goose Hangs High.....	50	35
Your Uncle Dudley.....	50	35
Cock Robin.....	50	25
Hay Fever.....	50	25
Brief Music.....	25	20
Harriet.....	50	35
Nine Pine Street.....	25	15
Green Grow the Lilacs.....	25	20
Dulcy.....	25	20
Laff That Off.....	25	15
On the Hiring Line.....	25	15
Tons of Money.....	25	15
Hope for the Best.....	35	25
Common Ground.....	35	25
Mr. January and Mrs. Ex.....	35	25
In the Next Room.....	25	15
The Love Expert.....	25	15
The Detour.....	25	15
Not So Fast.....	25	15
House Party.....	25	15
The World We Live In.....	25	15
The House Beautiful.....	25	15
Nothing But the Truth.....	25	15
George and Margaret.....	25	15
The Silver Cord.....	25	15

Berkeley Square.....	25	15
Spring Again.....	35	25
Our Town.....	25	20
Philadelphia Story.....	50	35
Murder Without Crime.....	25	20
Yes, My Darling Daughter.....	35	25
Old Acquaintance.....	35	25
Here Today.....	25	20
Walrus And The Carpenter.....	25	20
The Beautiful People.....	25	20

LONGMANS, GREEN & COMPANY

55 Fifth Avenue, New York, N. Y.

	Catalogue Rates	Special Rates
Smothered.....	\$25	\$20
Sun Kissed.....	25	20
The Whole Town's Talking.....	25	20
The Hill Between.....	25	20
The Queen's Husband.....	25	20
Bridal Chorus.....	25	15
Second Childhood.....	25	20
Saturday's Children.....	25	20
The Swan.....	25	20
Night of January 16th.....	25	20
Icebound.....	25	20
The Millionaire.....	25	15
A Lucky Break.....	25	15
Loose Ankles.....	25	15
Strangers At Home.....	25	15
The New Poor.....	25	15
The Call of the Banshee.....	25	15
Go Ahead.....	10	5
He Comes Up Smiling.....	10	5
The Girl From Childs.....	10	5
Watch Your Step.....	10	5
The Radio Mystery.....	10	5

One-act Plays

The Nativity.....	10	5
The Mouse.....	10	5
His Blue Serge Suit.....	10	5
Town Hall Tonight.....	10	5

THE NORTHWESTERN PRESS

220 Park Avenue, Minneapolis, Minn.

	Catalogue Rates	Our Rates Performance	
		1st	2nd
Giants In the Earth.....	\$25.00	\$15.00	\$15.00
The Tower Room Mystery.....	25.00	15.00	12.50
The Hoosier Schoolmaster.....	25.00	15.00	15.00
Rosemary For Remembrance.....	25.00	15.00	15.00
The Adorable Age.....	25.00	15.00	15.00
The Valiant One.....	25.00	15.00	15.00
The Unseen Way.....	25.00	15.00	15.00
The Miracle.....	25.00	15.00	15.00
The Hoosier Schoolboy.....	25.00	15.00	15.00
Lady Be Good.....	25.00	15.00	15.00
Young Lincoln.....	25.00	15.00	15.00
Jane Eyre.....	25.00	15.00	15.00
Ramona.....	25.00	15.00	15.00

DRAMATISTS' PLAY SERVICE

6 East 39th Street, New York City

(Barrett Clark, Director)

Dramatists' Play Service will grant royalty reductions to our organization on any of their plays on which such concessions can be arranged, depending upon the publishers' agreement with the author of the play in question and the circumstances under which the play will be produced. Write direct to Dramatist Play Service requesting printed forms provided for making application for reduced royalty rate upon the play desired.

WALTER BAKER COMPANY

178 Tremont Street, Boston, Mass.

Title	Catalogue Rates	Special Rates	
		1st Per.	2nd Per.
Adventures of Huck Finn.....	\$10.00	\$ 7.50	\$ 7.50
Adventures of Tom Sawyer.....	10.00	7.50	5.00
And There Were Voices.....	15.00	10.00	5.00
Anthony and Anna.....	25.00	15.00	10.00
Barretts, The.....	25.00	15.00	15.00
Ben Franklin.....	15.00	15.00	10.00
Belles Of The Nineties.....	10.00	7.50	5.00
Boyd's Shop.....	25.00	15.00	15.00
Bride Regrets, The.....	25.00	10.00	15.00
Connecticut Yankee.....	25.00	15.00	15.00
Crime At Blossoms.....	25.00	15.00	15.00
Crime At The Club.....	10.00	10.00	7.50
The Devil's Host.....	25.00	15.00	10.00
Disraeli.....	25.00	20.00	15.00
The Enchanted Cottage.....	25.00	15.00	10.00
Expressing Willie.....	25.00	15.00	7.50
The First Mrs. Fraser.....	25.00	15.00	15.00
The Fountain of Youth.....	25.00	15.00	10.00
Ghosts.....	15.00	10.00	10.00
Gold In The Hills.....	25.00	15.00	10.00
The Great Adventure.....	25.00	15.00	15.00
Happy Is The Bride.....	10.00	7.50	5.00
He And She.....	10.00	10.00	7.50
Honest Abe.....	10.00	7.50	5.00
I Have Five Daughters.....	15.00	10.00	10.00
The Inspector General.....	15.00	10.00	7.50
Jane Eyre (Carleton).....	15.00	10.00	5.00
Larry.....	25.00	15.00	15.00
Little Shepherd of Kingdom.....			
Come.....	10.00	7.50	5.00
Local Color, Ltd.....	10.00	7.50	5.00
Loures.....	25.00	20.00	15.00
The Mad Hatters.....	10.00	7.50	5.00
A Man Who Married A.....			
Dumb Wife.....	25.00	15.00	10.00
Mary, Mary, Quite Contrary.....	25.00	15.00	10.00
Mary The Third.....	25.00	15.00	7.50
Milestones.....	25.00	15.00	10.00
The Mollusc.....	25.00	15.00	10.00
Nathan Hale.....	10.00	7.50	5.00
The Old Homestead.....	25.00	15.00	10.00
Prexy And Son.....	25.00	20.00	15.00
Raggedy Nan.....	10.00	7.50	5.00
Recipe For Murder.....	25.00	15.00	10.00
Return Engagement.....	25.00	20.00	15.00
Rip Van Winkle.....	10.00	5.00	5.00
Sherlock Holmes.....	10.00	5.00	5.00
Short Story.....	25.00	15.00	10.00
Shubert Alley.....	25.00	20.00	15.00
Monsieur Beaucaire.....	10.00	7.50	5.00
Silas The Chore Boy.....	25.00	15.00	10.00
Squaring The Circle.....	15.00	10.00	5.00
A Star Comes Home.....	10.00	7.50	5.00
Stars May Change.....	15.00	10.00	10.00
39 East.....	15.00	10.00	7.50
To My Husband.....	25.00	15.00	10.00
Wappin' Wharf.....	25.00	15.00	10.00

Stop Over.....	25.00	15.00	10.00
The Front Porch.....	10.00	7.50	5.00
Little Shot.....	25.00	15.00	10.00
Tourists Accommodated.....	15.00	10.00	5.00
The Wing Is On The Bird....	10.00	7.50	5.00
The Years Of The Locusts....	15.00	10.00	5.00

ROW, PETERSON & COMPANY

Evanston, Ill.

131 E. 23rd Street, New York 10, N. Y.

1233 S. Hope Street, Los Angeles 15, California

For each production of the plays listed below, the royalty is 1/5 of the gross receipts, after Federal Tax has been deducted, with a minimum charge of \$25, and, in some cases, a minimum charge as indicated below. A flat rate will be quoted on request.

For College and Junior College

	Maximum	Minimum
Fresh Air.....	\$25.00	None
Love Is Too Much Trouble.....	25.00	None
Maybe You're Wrong.....	25.00	None
The More the Merrier.....	25.00	None
Stage-Struck.....	25.00	None
Trouble Shooter.....	25.00	None
The Inner Willy.....	25.00	None
Two Gentlemen and Verona.....	25.00	None
Beginner's Luck.....	25.00	None
Black Wings.....	25.00	None
The Cuckoo's Nest.....	25.00	None
Days Without Daddy.....	25.00	None
It's Done In Your Head.....	25.00	None
Double Exposure.....	25.00	None
The Green Vine.....	25.00	None
The Guest Room.....	25.00	None
Hasty Pudding.....	25.00	None
Headed for Eden.....	25.00	\$10.00
The Hoosier Schoolmaster.....	25.00	None
The King Rides By.....	25.00	None
Leave It to Youth.....	25.00	None
Leave to Marry.....	25.00	None
Love Your Neighbor.....	25.00	None
Once and for All.....	\$5.00	\$10.00
Remember the Day.....	25.00	10.00
Sky Road.....	25.00	10.00
Cash and Carrie.....	25.00	None
Wings of the Morning.....	25.00	\$10.00
The Wooden Slipper.....	25.00	None
The Taming of the Shrew.....	No Royalty	None
The Green Scarab.....	25.00	None

Forty-Minute Classics

The Rivals	
The Importance of Being Earnest	
The Christmas Carol	
Twelfth Night	
She Stoops to Conquer.....	No Royalty

One-Act Plays

	Royalty
Andante.....	\$5.00
Gray Bread.....	5.00
Mind Set.....	5.00
The High Heart.....	5.00
Jacob Comes Home.....	5.00
High Window.....	5.00
A Message from Khufu.....	5.00
Senor Freedom.....	5.00
The Sound and the Fury.....	5.00
Strange Road.....	5.00
Submerged.....	5.00
They Also Serve.....	5.00
The Voice of America.....	5.00
A Deer of Another Color.....	No Royalty
Ladies of the Mop.....	No Royalty



Scene from "Uncle Harry," staged at Kansas Wesleyan College, directed by Lilybelle Lewin Carlisle.



"The Little Foxes," Linfield College, McMinnville, Ore., directed by Prof. R. D. Mahaffey.



WHAT THE MEMBER --- COLLEGES ARE DOING!

ETA ETA

Mary Washington College

University of Virginia

Ellen E. Bono, Secretary

The Eta Eta Chapter opened the year by producing "Death Takes a Holiday." The entire fall quarter was devoted to production activities. The play attracted the largest audience and netted the greatest financial returns ever obtained from our auditorium. During the winter our chapter sponsored the "Taming of the Shrew," and in the spring quarter, "Little Women."

This year, the Eta Eta chapter initiated the following: Dr. Alvy, Dee Ambrose, Ann Bradley, Shirley Booth, Betty Caum, Jean Crotty, Mr. Graves, Ann Gregg, Barbara Hickman, Ellen Lane, Mary Jane Lindenberger, Ruth Meyer and Virginia Pinchbeck.



"Death Takes a Holiday," Eta Eta Cast, Mary Washington College of University of Virginia. Prof. Harold H. H. Weiss, Director.

ALPHA ALPHA

Concordia College

Moorehead, Minn.

Norma Gooden Gilbert, Director of Dramatics

Alpha Alpha Cast celebrated the fraternity's 20th year with the largest membership in the Concordia Theatre and the second largest membership in the chapter. At our open-house tea in September we entertained over 400 college students by presenting scenes from the plays of the previous year. Over 200 of our guests became theatre members that day.

Our first play was "White Banners," adapted from the Lloyd C. Douglas novel. As an entertainment feature the Cast presented two one-acts in late February: Shaw's "Dark Lady of the Sonnets," and "Sparkin'." Alpha Alpha Cast celebrated the 20th anniversary of the founding of the fraternity at a banquet in the Silver Room of the Hotel Graver in Fargo on April 17, 1946. On May 10th we produced the unforgettable "I Remember Mama" for the largest audience ever to see a Concordia Theatre play.

The annual Memorial Day outing was resumed this year at the summer lake cottage of the director, Mrs. Gilbert, on Lake Melissa, Detroit Lakes, Minn. This year the representative member award went jointly to Lois MacNab and Margaret Schroeder. Both girls were presented with Alpha Psi pins as appreciation for their service and fine acting during their 4 years in college. Norma Gooden Gilbert, director for the past 14 years retired this spring, and Alpha Alpha Cast will have a new director in the fall.

GAMMA ETA

Lenoir Rhyne College

Hickory, North Carolina

By Claire Holling

The year 1945-46 proved to be one of "happy days are here again," for old members returned from the armed forces and the man shortage was beginning to be a situation of the past. Two major productions, "Junior Miss" and "The Art of Being Bored," were well produced and received.

Gamma Eta initiated six new members, and one honor member, Dr. O. H. Browns. The fraternity sponsored the annual Playmakers Banquet and a breakfast in honor of the graduating members of the cast, and also two trips to Charlotte to attend productions of the Little Theatre in that city: "Junior Miss" and "Blithe Spirit." Officers elected for next year are: Lawrence Thorneberg, Ruth Lineberger, and Eleanor Sheets.



Photo-story of "HIGH WINDOW," a one-act play produced by the Drama Guild, Southwestern Louisiana Institute. Director, Verne Powers.

DELTA LAMBDA

Arizona State College

Tempe, Arizona

By Marion McGuire, Faculty Director

The fall season of The Drama Workshop began with very elaborate preparations for the production of "Stage Door." Because of an influenza epidemic, it finally became necessary to postpone the production dates until the second semester. Early in the second semester, we tried an experiment in central staging for a production of "The Dover Road." Our next production was a version of an old-style melodrama, "Only an Orphan Girl," by Henning Nelms. Entr'Acte Entertainment was also featured. A good time was had by all.

A very successful production of "Little Women," on the evening of February 26, directed by Marilyn Lee, was also sponsored by the Drama Workshop. An evening of one-act plays, "The Will o' The Wisp," "Purple Doorknob," and a Curtain skit were presented as a final program by the Acting class in the college auditorium on the evening of May 16th.

On the evening of May 13th, a formal initiation ceremony was held for eight new members of Delta Lambda Cast of Alpha Psi Omega. A banquet followed at a downtown cafe.

IOTA PHI

American University

Washington, D. C.

By Mary Ann Brown

Iota Phi started with a tea for all those interested in dramatics. Soon after came the announcement of "Arsenic and Old Lace," as our fall play. Spring brought forth a series of one-act plays, which were given on many occasions, including the annual Spring Tea of Alpha Psi Omega. The "Taming of the Shrew" was presented in our new outdoor Grotto Theatre, directed by Miss Mary Francis Miller. The lighting arrangements and scenery were unusually effective.

ZETA NU

Armstrong College

Berkeley, California

By Zola C. Pulsipher

Despite enrollment in highly concentrated courses, the Thespians, workshop of the Zeta Nu chapter, produced four one-act plays as their 1945-46 offerings to an appreciative student body.

"New School for Wives" was voted the finest yet produced by the organization. A highly humorous hit, "If Men Wore Hats as Women Do," was played with an all-veteran cast who no doubt dreamed up the dizzy creations they modeled while in foreign foxholes and on daily air missions.

The Thespians attaining membership in Zeta Nu included: Ann Brixey, Raymond Mink, Alice Iwaki, Leonard Ward, Zola Pulsipher, Dabney Linthicum, Earla Foose, Norman Thompson, Winona Fangelina, and Larry Samora. The two annual awards of the dramatic fraternity were presented to Thelma W. Lafferty for her constant efforts in the promotion of Alpha Psi Omega and its standards within the college, and to Norman Thompson for his interpretation of Daniel Boone. The new officers, cooperating with cast director, Mrs. Rosalie Winslow Johnson, are: Norman Thompson, Dabney Linthicum, and Leonard Ward.

Twenty Five

PI

West Va. University

Morgantown, W. Va.

By Cathie Moore, Secretary

The Pi Cast of Alpha Psi Omega, W. Va. University, Morgantown, has big plans for the year '46-'47. Along with sponsoring the season ticket sale for the University Players' five major productions, in which our goal is 5,000 tickets, we are presenting a children's play, free to all the children of Morgantown. This was done last year and was highly successful. "Jack and the Bean Stalk" was the play used.



Scene from "The Little Foxes," West Virginia Univ., Sam Boyd, director.

Since approximately fifty veterans have enrolled in the speech department, we have decided to sponsor a Mozart's Ball, open to all majors and minors, which will serve as a get-acquainted party. Friendliness makes for better cooperation. Our long plays last year were: "The Little Foxes," "Blithe Spirit," "Outward Bound," and "Angel Street."

ALPHA BETA

Coker College

Hartsville, S. C.

Nyra Turbeville

The Queen Bess Players of Coker College, under the direction of Miss French Haynes presented three full-length plays: "Spring Green," "Green Stockings" and "Sorority House." Among the one-act plays staged for various occasions were: "He Ain't Done Right by Nell," a war-bond play, and a religious play, "Respectable Robbers."

ALPHA OMICRON

State Teachers College

Bloomsburg, Pa.

The director had a year's leave of absence doing Speech Rehabilitation in an Army Hospital, but Alpha Omicron members aided materially in keeping up dramatic interest. During the latter part of the college year, the interest centered in a production of "The Man Who Came to Dinner." The production was a great success. One noteworthy item was the excellent portrayal of the minor parts. It was a good play to mark the beginning of what we hope will be a good post war season.

THETA NU

Oakland City College

Oakland City, Indiana

Evelyn Kilbert

Since there was still a shortage of men and an over supply of women on the Oakland City campus last fall, we presented the comedy, "He Couldn't Marry Five," by Robert St. Clair for the opening play of the season.

The season was closed with a successful production of "Tish," by Alice Chadwicke. To set the mood of the play a program of Mexican music was given by the girls chorus and Bill Monical. They were dressed in very lovely Mexican costumes.

On June 3 four new members were admitted to Alpha Psi Omega: Naomi Wiggs, Sarah I. Douglas, Imol Fritz, and Esther Annis.

BETA PSI

Kent State University

Kent, Ohio

Edwin Suvanto, Cast President

The fall production of Noel Coward's "Blithe Spirit" was directed by Professor E. Turner Stump. Opal Wigner Boffo directed the winter play, "The Enchanted Cottage." Professor G. Harry Wright, recently returned from the service, directed "Snafu," the spring production. In this play most of the made parts were played by returned servicemen. David Ryan, also a member of our cast, directed the annual all-student-written-produced-and-acted musical, "No Time for Classes." This production was well-received by the audience.

Beta Psi Cast took into membership three novices—Vincent Fox, Felice Faust, and Jane Filler. The graduating members are Arlene Riggie and David Ryan.

EPSILON

Lynchburg College

Lynchburg, Va.

Rebecca Bolton

The Epsilon Cast had a most successful theater year. Our curtain rose for the first time in the fall on two one-act plays, "Andante" and "Ringing in the Groom." They had as student directors Libbie Keeton and Ruth Smith. As an assembly program, "Mooncalf Mugford" was directed by Kathryn Speck.

The Lynchburg College Players gave as the spring production "A Bell for Adano," by Paul Osborn. Our faculty sponsor, Miss Jessie May Wild, was the director, and crew members were from the Players and the Cast.

GAMMA RHO

Northwestern State College

Alva, Oklahoma

Dorothy Hoch, President

The Gamma Rho Cast of Northwestern College chose as one of its major productions, "Dark Victory." We made this choice realizing that it was a psychological play and would require great acting ability. Our other major play was of an entirely different nature—"Snafu" by George Bowers, Jr., and Bertram Bloch. Our only short play was "Escape by Moonlight," by Kenneth Crotty.

During the dramatic season of 1945-46 Dorothy Hoch served as president of Alpha Psi Omega, Carol Prentice as secretary-treasurer. Mrs. Maud A. Drake Bingham was director of dramatics.

Left—Two scenes from "Berkeley Square," Acadia University.
Prof. H. F. Stuprell, director.

Right—(top) Scene from "Everyman," (2) Scene from "Berkeley Square," (3 and 4) Two scenes from "King John, Acadia Univ.



Photos by Marriott

DELTA

Acadia University

Wolfesville, Canada

George Ann Fleming

With the return of several old members and the addition of many newcomers, Delta Cast and its fellow dramatic organizations on the Acadia campus, enjoyed a most successful season during 1945-46. The first group of plays was comprised of "The Trysting Place," "The Monkey's Paw," and "Murder is Fun." Near Christmas a group of plays from the pen of George Bernard Shaw was given. "The Man of Destiny," "The Dark Lady of Sonnets" and others were chosen. In February the cast sponsored the production of the morality play, "Everyman," which was first given as part of the university church service and later taken to Windsor, N. S. where it was presented in the chapel of King's Collegiate School. In April the energies of the entire group were directed to the production of "Berkeley Square." Shakespear's "King John" was the closing play of the year.

DELTA NU

Southern College

Lakeland, Florida

By Mr. J. Ogden Jr.

Delta Nu cast of Alpha Psi Omega initiated five new members at their annual banquet held April 30: F. A. Moody, Jr., Bill Madsen, Jessie Prarish, Carole Salentine and Arthur Swinnerton.

The Vagabonds, local dramatic group on the campus of Florida Southern College, sponsored by Alpha Psi, presented three plays this year, directed by Damarise Kitch. They were "The Importance of Being Earnest," "The Taming of the Shrew," and "Claudia." The Reader's Theatre gave a candle light tea and a reading of Maxwell Anderson's "High Tor" to the students and guests of the college in the spring. More projects of this type will be sponsored by Alpha Psi in 1946-47.

IOTA DELTA

McMurry College

Abilene, Texas

Billie Jeanne Fowler

Dramatic activities returned to prominence at McMurry College March 11 and 12 this year with a McMurry Theatre Production of Shakespeare's immortal comedy, "A Midsummer Night's Dream." under the direction of our new director, W. Fredric Plette. Authentic Elizabethan costumes were used and the play was staged in the raucous Elizabethan style.

McMurry Theatre Productions organized this year to act as a producing group for future showings. Harold Fees was elected president. To reactivate Iota Delta Cast, Billie Jeanne Fowler, Gene Hooper Jr., and Gwenelle Eagan were chosen for membership. Initiation was held, and members went to Abilene Christian College to see their Alpha Psi Omega production of "Rebecca."

ZETA DELTA

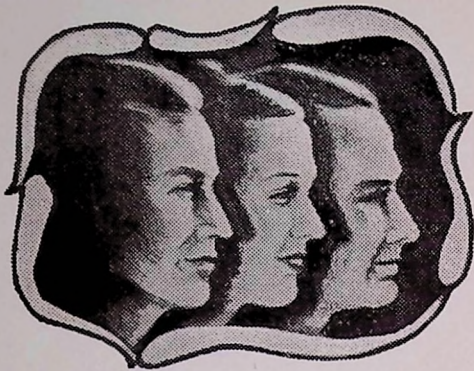
Arkansas State College

Conway, Ark.

Our major plays for the past season were: "Little Foxes," "Come Rain or Shine," "Blithe Spirit," and "Macbeth." The stage sets for the last two were beautiful and fun to construct. Miss Leona Scott is faculty director. The one-act plays were: Coward's "Fumed Oak," "Challenge of the Cross," "Dust of the Road," "Red Carnations," "The Same Old Thing," "Gallant Lady," "Good Night Caroline," and "A Question of Morality."

Twenty Seven





Charica Henson, Jane Jones, and Joe Fitch. The triangle in "A Bill of Divorcement," Murray State College.

GAMMA EPSILON

Murray State College

Murray, Ky.

Three major plays presented by the Sock and Buskin Dramatic Club were the popular comedy: "Janie," "A Bill of Divorcement," and "Family Portrait." Several short plays were student directed and staged at club meetings. They include "The Under Dog," "A Matter of Husbands," "Overtones," "Tea Pot on the Rocks," "A Moment of Darkness," "The Juber Bird," "The Bishop's Candlesticks," and "A View from the Porch."

Miss Jane Jones, former cast director, was selected outstanding dramatic student of the year. An effort was launched this year to maintain contact with former members of Alpha Psi Omega, who were invited to the spring initiation banquet. Their presence and their comments added new encouragement to the present active group.

THETA ETA

Hood College

Frederick, Maryland

Jane O. Young, Secretary

For our major productions this year we chose Noel Coward's "Blithe Spirit" and Thornton Wilder's "Our Town." "The Sandalwood Box," "Riders to the Sea," and "For Distinguished Service," were shorter plays. During the year Miss Sally Holland served as director of dramatics, Miss Charlotte Sheffer as president of Dramatic Club, and Miss Jean Neel as secretary.

GAMMA BETA

Trinity University

San Antonio, Texas

E. Clayton McCarty, Director

One of the most outstanding events of this dramatic year was the River Parade and Pageant which opened San Antonio's Fiesta Week. This production involved 400 participants, 100 decorated boats, and an audience of 400,000. The students who attended Trinity during the fall and winter semesters wrote the continuity for the radio script of the pageant which was used by the American Broadcasting Co.

During the dramatic season we produced four long plays: "Dulcy," "The Man Upstairs," "The Taming of the Shrew," and "Death Takes A Holiday." Two shorter plays were produced.

During the year Mary Jane Parker and Doris Nielsen were the officers of the Trinity University Players. During 1946-47 the group will be co-directed by Prof. Clayton McCarty and Miss Lucille Todd.



Scene from "Family Portrait," Murray State College, Gamma Epsilon Cast, Prof. Joseph Cohron, director.

GAMMA PI

Bessie Tift College

Forsyth, Georgia

Dorothy Bailey

During the past season Gamma Pi case produced three long plays: "Moor Born," "The Girl with Two Faces," and "I Remember Mama." Several members of the Dramatics club qualified for membership because of these productions and the year was very successful. In addition to the long plays, shorter plays were given. Among the shorter plays were: "When Shakespeare's Ladies Meet," "The Happy Journey from Camden to Trenton," and "Midnight Ghost."

ETA BETA

Carson Newman College

Jefferson City, Tenn.

Franklin R. Shirley

During the year of 1945-46 the Eta Beta cast of Carson Newman College placed special emphasis upon the production of long plays; and only one one-act play was produced. The long plays produced were: "The Great Big Doorstep," "You Can't Take It With You," "Pride and Prejudice," and "Last Step." The shorter play was "Two Lunatics." We consider the year very successful and expect to be even more active during 1946-47.

ZETA

Western State College

Gunnison, Colorado

H. W. Taylor, Director

Western State College produced two major plays during the dramatic season of 1946-46. In November Noel Coward's "Blithe Spirit" was presented. The concluding production for the term was given in May 1946. The play chosen was appropriately enough, "Spring Dance," by Philip Barry.

ETA UPSILON

Bridgewater College

Bridgewater, Va.

Mrs. F. D. Dove, Director

Our dramatic season at Bridgewater College was made far more successful than usual because of the return of many veterans to the campus, and many of them participated in the plays which were presented.

"Little Women" was presented on December 8th under the direction of Prof. John Basta. "The Barretts" was given March 2nd. with Doris Cline as Elizabeth Barrett and was directed by Prof. Ben. W. Fuson. "Lost Horizon" was presented March 18th under the direction of Mrs. F. D. Dove. "The Corn Is Green" was presented under the direction of Dr. Fuson. Constance Dewese had the leading role as Miss Moffatt. On May 7, 1946 we accepted an invitation to present "Luncheon for Six" at Franklin City High School, Franklin, W. Va. Six new members were initiated during the season. Geraldine Zigler was president of the dramatic club.

ALPHA PHI

Valley City State College

Valley City, N. D.

Sigried Moe, Director

During the 1945-46 season, Douglas Thorkelson served as president of the dramatic club, and Ardelle Johnson as vice-president. The cast presented a variety of plays. On November 3rd, A. Gerstenberg's, "The Pot Boller" was presented, on October 25th, Molnar's "A Matter of Husbands," on November 27th and 28th, George Kaufman's, "If Men Played Cards as Women Do," and the final play of the year was Ryerson and Clement's, "Hot Lemonade." The major production of the year was Moliere's, "The Imaginary Invalid," which was presented on March 4th.

One of the most amusing productions of the year was "He Ain't Done Right by Nell." This production was presented with costumes, old stage sets, and proper theme songs.

Twenty Nine



Bob Sinclair and Mary Lou Howard in "The Boor,"
Slippery Rock State College, Delta Phi Cast.

DELTA PHI

State Teachers College

Slippery Rock, Penna.

By Jannette Burns, Director

A theatre party to see "Blithe Spirit," an initiation banquet, and a picnic added variety to our regular monthly meetings. Fifteen new members were initiated on March 22. Robert Sinclair, Marcia Carlson, Jean Pratt, and Lois Poppelreiter will be our officers for 1946-47.

The college dramatics organizations, including Alpha Psi Omega, sponsored the following performances during '45-'46: "The Victory Revue"—an original variety show, November '45, "Stage Door," February '46, and the following one-acts: "The Boor," "The Powers That Be," "Boy Meets Family," "Ladies Alone," "The Valiant," "There's Always Tomorrow," "Nobody Sleeps," "Trial by Moonlight," and "Strange Road."

ALPHA

Fairmont State College

Fairmont, W. Va.

By Denzil Marks

During the year of 1945-46, The Masquers of Fairmont State College were directed by Lawrence Wallman. As one of the major productions, "The Great Big Doorstep" by Goodrich and Hackett was very successful. "Mr. and Mrs. North" was a murder thriller and enjoyed repeat performances. Several one-act plays were produced.

Miss Cecilia Plymale capably served as president of Alpha Psi Omega during the dramatic season, and Miss Jean George served as secretary-treasurer.

UPSILON

Kansas Wesleyan University

Salina, Kansas

Lillybelle Lewin Carlisle, Director of Dramatics

During the 1945-46 season we produced two long plays and two short ones. One of the most successful was "Uncle Harry." The other long play was "Moor Born." Our short plays were "Oh Those Days!" and "Sunlight."

Miss Wreath Hicks served as president of Alpha Psi Omega during the past dramatic season, Miss Dorothy Beck as secretary.

THETA SIGMA

Missouri Valley College

Marshall, Missouri

By Lois Cross, Director

The destinies of Theta Sigma cast were jointly directed during 1945-46 by Mrs. Dorothy Patterson and Miss Lois Cross. This year we staged "The Teeth of the Gift Horse," "The Bride Wore Red Pajamas," and "Miss Sydney Carton." Ella Mae Hartford served as president of the Dramatic Club, while Steve Murphy took over the secretarial responsibility of keeping the records of the cast in order.

IOTA ZETA

Mercyhurst College

Erie, Penna.

Marilyn Cumminskey

We were busy during our first post-war year, for we chose as our full length productions, "Career Angel," by Murray, and "I'll Leave It to You," by Noel Coward. Both of these productions were successful.

We did not neglect shorter plays for we produced Henri Ghian's "Christmas in Village Square," and during the season we presented numerous skits over radio station WERC. On "Talent Night" we presented, "The Lights Went Out," which was an original radio skit, and several dances and monologues.

Our president for the year was Natalie Hirtle; our secretary, Marilyn Cumminskey.

GAMMA NU

Bluffton College

Bluffton, Ohio

By Betty Hilty, President

The long plays produced by Bluffton College this past year were: "The Little Minister" and "Taming of the Shrew." Our main objective for next season is to stage another Shakespearean play, for which we expect to make the costumes. Short plays given were: "Back Seat Driver," "Light of My Life," "Hard Boiled," and "Thankful at Last."

CHI

Buena Vista College

Storm Lake, Iowa

By Nancy J. Ford, Director

The dramatic organization of Buena Vista College and Alpha Psi Omega staged as their feature production Sidney Howard's "Late Christopher Bean," which was presented to a large audience. Miss Louise Crouch was president of the Dramatic Club. Faculty director, Professor Nancy J. Ford, has made plans for a very active program of production for the coming year.

IOTA GAMMA

Cedar Crest College

Allentown, Pa.

Margaret Valentine, Cast Director

This season has been a busy one for the Drama Department of Cedar Crest. Shakespeare's "The Merchant of Venice," Franken's "Claudia," and Ibsen's "Ghosts" were presented under the direction of Miss Madeleine Skelly, cast advisor. The fourth production, "The Man Who Washed His Hands," by Madeleine Skelly, was directed by Margaret Valentine. Euripides' "Electra," the twenty-second annual Greek festival, was presented in the Greek Theatre, on the campus, under the direction of Miss Skelly, assisted by the Departments of Music and Dance.

This year two casts, under the direction of Marcia Co-han and Dorothea Kleist, presented "The Other Kingdom" by Madeleine Skelly in New Jersey and Pennsylvania. The productions were sponsored by the colleges and churches in the communities visited.

Bette Lu Souser, Cast Director for next year, will play Tracy in "Philadelphia Story," at Lehigh. Kitty Hann will soon be given an audition at the Paper Mill Playhouse, Milburn New Jersey. Next year Cedar Crest plans to present six full-length plays and again go "on the road."

Several "theatre parties" were held this year at the Drawing Room Theatre of Bethlehem and the Mustard and Cheese Club of Lehigh University.

THETA CHI

Eastern Oregon College

La Grande, Oregon

By Ruth Barlow

The Theta Chi cast of Alpha Psi Omega held its spring initiation Tuesday, May 28, 1946. Charter members William G. Wilson and Bernadine Roberts conducted the initiation. Thirteen new members were admitted into Theta Chi Cast. The final act of a busy year was the election of officers. Jack Brown was elected Director, Maurine Browning, stage manager, and Ruth Barlow, business manager.

GAMMA MU

Muhlenberg College

Allentown, Penna.

W. Robert Oswald

Several members of our dramatic club qualified for membership into Alpha Psi Omega during the 1945-46 season. Officers of the Gamma Mu Cast are—president, Harold Helferich, Jr., vice-president, Gerald S. Rogers, and secretary, Robert Oswald. We had a very successful year of dramatics and should do better this coming season.

ALPHA PI

Millsaps College

Jackson, Miss.

During the past season, members of Alpha Pi cast with the Millsaps Players presented three three-act plays under the direction of our sponsor, Dr. M. C. White. The first, "Arsenic and Old Lace," was double cast for the women's parts and was presented three times. "Her Step Husband" was completely double cast with each cast playing one night. "Mr. Pim Passes By" was the last production of the season.

At an informal banquet sixteen new members were initiated into Alpha Psi Omega. Bill Dennet, Craig Castle, Edith Gussio, Rosemary Nichols, Ethel Eastman, Elizabeth Welsch, Tom Harrison, Bob Ray, Flora Geraldina, Mary Ridgeway, Gene Nettles, Marilyn Mitchell, Jenny Vontenleary, Billy Moore, Janie Williams, and Frances Williams.



Buena Vista (Chi)
Scene from "The Late Christopher Bean," direction of Nancy J. Ford.



Beta Eta cast group, Huntingdon College

BETA ETA

Huntingdon College

Montgomery, Ala.

Beta Eta Cast began its activities for 1945-46 with the formal initiation in November, honoring nine new members at a luncheon just preceding the Christmas holidays. Members of the cast helped with the Pierrette Club production of "Career Angel," which was directed by Kitty Riddle. In the early spring the cast sponsored "Lady of Letters," a comedy directed by Wacile Williams.

The newly elected officers for 1946-47 are: Kitty Riddle, Catherine Cobb, Jean Hornsby, Sally Wedekind, and Lulu Mae Gates. Our faculty advisor is Miss Frances Cattrell. New members to be initiated in the fall of 1946 are: Charlotte Dickinson, Ruth Milner, Kay Murphy, Frances Pearson, and Dale Ryland.

THETA GAMMA

LaGrange College

LaGrange, Georgia

June Barbour

We opened our 1945-46 season with an evening of one-acts—"The Legend of Camille," and "The Forgotten Man." The forgotten man was a poignant religious drama about Christ (the forgotten man) and the church. We selected for our next production Lavery's realistic "Brief Music," a true-to-life affair of life in a Girls' College. We played ourselves, and the audience loved it.

For our Christmas production we gave "Why the Chimes Rang." The local Catholic priest helped us make things authentic. After Christmas we supported the Junior Curtain Raisers in their production of "The Adorable Age." Later we played their mothers and aunts in "A Woman of Fifteen."

With the return of veterans we were able to draft a few men. "The Silver Cord" was the result, and "Death Takes a Holiday."

Our "pre-Alpha Psi-ites" produced, under the supervision of student directors an evening of one-acts—"The Tenth Word" and "Grandma Pulls the Strings"—and a 3-act play, "Ladies in Waiting." These are what we call lab plays, and they serve as conditioners for heavier productions. For several months every Sunday night we presented a "radio adaptation" of some play.

Thirty One



"Listen Professor." Fred L. Bush, director,
Central Mich. College.



"Mr. and Mrs. North," Ursinus College,
Dr. Harold Helfferich, director.

DELTA TAU

Ursinus College

Collegeville, Penna.

Charlene Taylor

The Delta Tau cast of Alpha Psi Omega has had a very successful season. The two major productions were "Mr. and Mrs. North," a very exciting mystery comedy, and "Spring Again," a delightful three-act comedy. Both of these were directed by students, with the able help of Mr. and Mrs. Helfferich, our sponsors. Throughout the year, several one-act plays, some original, were presented to the student body.

The formal initiation was conducted on June 16th. New members include: Susan Bellis, Carolyn Howells, Howard Strawcutter, Jack Thompson, Marian Sare, Henrietta Walker, and Ruth Reese.

KAPPA GAMMA

S. W. Missouri State College

Springfield, Mo.

The Kappa Gamma cast was organized in Springfield, during the summer of 1946. The sponsor is Miss Leslie Irene Coger. Charter members include Lloyd E. Johnson, Joan Krafft, Louise Miller, Marcella Lester, Virginia Baker, Doris Noblitt, Joye Clouse, Mary Turrentine, Nelson Kifer, and Basil Boritzki.

Plays produced during the past year include, "My Sister Eileen," "Berkeley Square," "The Male Animal," and "Angel Street."



Scene from "Shubert Alley," Incarnate Word College,
Sister Helene Probst, director.

IOTA XI

Incarnate Word College

San Antonio, Texas

Sister Mary Helene

Eleven new promising members have been added to the already active and alert Iota Xi Cast of Alpha Psi Omega. In February, Mary Louise Hickey, noted solo-dramatist, spent an enjoyable evening with the club members. The renowned lecturer on Shakespeare, Reverend Henry Courtney, O. S. B. was guest-speaker of Alpha Psi Omega during March. He urged the group to produce on our picturesque campus some of of Shakespeare's comedies.

The major productions during the 1945-46 season were: "Shubert Alley" and Robert Hugh Benson's Passion drama, "The Upper Room." Among the shorter plays were: "Between Dances," "A Christmas Gift from Heaven," "Christmas Lost and Found," "Whither Goest Thou?" and the "Joyful Mysteries."

BETA OMEGA

Keuka College

Keuka Park, N. Y.

Arion, Keuka's Dramatic Club, went through an unusually successful year with Alpha Psi members, Mary Yaw and Betty Grant, as president and program chairman. The season opened with a one act play, "The Untitled" by Norman Corwin, followed by the fall play "The Bishop Misbehaves." The winter quarter saw the court room scene



Scene from "Junior Miss," Concord College, directed by
Mrs. E. P. Bengert, director.

from "The Merchant of Venice," "The Color Line," a one act play of race prejudice.

Meetings of the club included guest artists, and reviews of Broadway plays as seen by director, Mae Baker.

The final production of the year climaxed in the unusually exciting "Song of Bernadette."

BETA XI

Concord State College

Athens, W. Va.

By Ruth Combs

Beta Xi had a very successful year; we presented two long plays: "Junior Miss" and James Thurber's "The Male Animal." Both plays were directed by Mrs. E. P. Bengert. "Junior Miss" was taken "on tour" to Mutoaka High School. "The Male Animal" featured many of the veterans who have enrolled at Concord College. After the performance, Miss Laurie Ann Sarvay, a charter member of Beta Xi cast, gave a supper for the actors and backstage workers. In May members of journalism fraternity, and members of Beta Xi cast held a joint picnic.

BETA IOTA

Valparaiso University

Valparaiso, Indiana

Vera T. Hahn, Director

The University Players opened their season with Chodorov's "Kind Lady." The annual presentation of "Eager Heart," the Christmas mystery, was given.

The Clare Tree Major Players were brought here for a performance of "Romeo and Juliet" and Alpha Psi Omega members entertained Cornelia Otis Skinner after her evening's entertainment here on the campus. During the second semester the one-act play "Our Dearest Possession," was given. The outstanding performance of the year was the spring production, "Papa Is All."

IOTA THETA

Moravian College for Women

Bethlehem, Penna.

By Ann Root

We began our Little Theatre season with a Broadway murder chiller, "Nine Girls." In January Ann Root played the only female role in "A Bell for Adano," which was given by Lehigh University's dramatic group, Mustard and Cheeze. In March was presented a series of one act

plays directed by Laura Fairchild, Jean Mandell and Ann Root. After completion these plays were given in the various clubs and organizations in Bethlehem and Allentown.

Directed by Mrs. Maybelle H. Meyer, professor of drama, "The Merchant of Venice" was produced May 31st.

The officers for Alpha Psi Omega are: Doris Helms, Becky Wuchter, and Mickey Coleman.

BETA PI

William Jewel College

Liberty, Missouri

Virginia D. Rice

Beta Pi Cast at William Jewel spent a busy year; two of its members, Jerry Schoech and Mary Ellen Jones were seniors and starred in "Blithe Spirit."

The William Jewell Players presented a modernized version of "The Famous Mrs. Fair" in the fall, and "Death Takes a Holiday" in the winter. Spring brought three one-acts, "On the Boards," "The Twelve Pound Look," "Submerged" and "The Happy Journey."

Our Players were happy to cooperate with the Red Cross in sending "The Happy Journey" for the entertainment of the patients at the Government Hospital at Wadsworth, Kansas.



Vivian E. Burton, faculty director of the Mercer Players.

ZETA PI

Mercer University

Macon, Georgia

Rose Langdale, Business Manager

The Zeta Pi Chapter of Mercer University sponsored four productions during the past year: "The Importance of Being Earnest," "Happy Journey," and a three act presentation, "Our Town." The spring program was an out-door presentation of "As You Like it."

The Mercer Players, after a period of inactivity during the war years, has been re-organized. Prospects for dramatics next year are very encouraging. The cast wishes to express its appreciation to Miss Vivian Burton who has directed each of the presentations. New members and officers for 1946-47 include: Christy Harp, Tom Morton, Rose Langdale, Bill Bizzell, Jim Ivey, Dupree Jordan, Emma Laura Keaton, Rose Mary Ricks.

Thirty Three



From top to bottom: "The Famous Mrs. Fair," "Death Takes a Holiday," and the family group in "The Happy Journey." William Jewell Players, Virginia D. Rice director.



Scene from "Blithe Spirit," directed by Carleton Ames, River Falls State College.

IOTA BETA

State Teachers College

River Falls, Wis.

Carleton C. Ames, Director

Iota Beta cast, almost dormant for two or three years, initiated in April, 1945 Betty Patterson, Louellyn Reiss, Marion Hope, William Crommett, Terry Hayes, Lorraine Thannum, Marguerite Baird, and Marie Breslin.

On November 29, 1945, Noel Coward's "Blithe Spirit" was presented to an enthusiastic audience, and with the same cast and crew it was again presented in the Hudson (Wis.) High School auditorium on the following evening. On March 21 and 22, the Masquers presented a "Gay Nineties Cabaret" in the college gymnasium. Card tables transformed the gym into a night club, while a stage had been built at one end. A floor show of an hour and a half, including a one-act play as well as a varied assortment of song, dance and novelty numbers was repeatedly encored. Fifteen minute intervals for dancing were interpolated in the program. Pop, Coca Cola, hotdogs, popcorn, were dispensed by faculty men who obligingly consented to act as waiters. The faculty director even sang bass in the Singing Waiters Quartet. We can recommend this sort of an event as a money-maker as well as an audience pleaser.

The cast of "Blithe Spirit" attended the production of the same play at the University Theater, University of Minnesota in January. The University Theater's director, Dr. Frank Whiting, was most kind in inviting us back stage.

OMEGA

Iowa Wesleyan College

Mt. Pleasant, Iowa

Waldo W. Braden, Director

The Omega Cast enjoyed another busy year under the joint direction of Dr. and Mrs. Waldo W. Braden. The season opened with a melodrama, "The Curse of an Aching Heart," directed by Mrs. Braden.

Upon his discharge from the army, Dr. Braden resumed his activities as director of the Cast. The second semester opened with the presentation of Fred Eastman's one-act play, "Bread." Next, nine student directed one-act plays involving over fifty student actors. Several of these were "Sauce for the Gosling," "Teeth of the Gift Horse," "Not Such a Goose," "Either or Eyther," "Silence, Please," and "Murder in Absentia," an original play by Eleanor Starkey. Two original radio dramas were presented on the Iowa Wesleyan Variety Hour, broadcast over WSUI. The season was closed with the commencement play, "Seven Sisters," a delightful Hungarian farce.

DELTA OMEGA

Judson College

Marion, Alabama

Ruth Ann Hall, Director

The Delta Omega chapter has had a most successful and active year. We carried on an accelerated program in an understudy group known as Apperprince Players, which had sixty members. Under the direction of Miss Ruth Anne Hall, head of the speech department, we presented the three-act play "Ladies in Retirement." One-act plays were given, including "Riders to the Sea," "Two Slatterns and a King," "A Sunny Morning," and "Overtones." The advanced acting class gave a program of acting scenes from various plays demonstrating acting techniques.

This year six new members have been initiated into the Delta Omega chapter. The season closed with a coffee in honor of the new members.



"Ladies in Retirement," Judson College, Miss Louise Thornton, director of dramatics.

ETA PSI

Furman University Greenville, South Carolina

By Frances Landrum

The Theater Guild of Furman University presented "Papa Is All" for its first play of the season. It was very well received. The next production was Thornton Wilder's "Our Town." After the performance the entire cast and backstage crew enjoyed a chicken supper prepared by the Home Economics department.

A double cast was used for the next, the children's play, "Heidi," and each person had opportunity to take part in two of the four performances. The students also gave the play at the Shriner's Hospital for Crippled Children. Many of the children wrote pencilled notes of appreciation to the cast. The succeeding dramatic event of the season was a bill of one-act plays: "Cabbages," "The Other One," by Arthur Ketchum, and "Three Pills in a Bottle." Twenty students had roles in "The Swan," the final dramatic offering of the year. Miss Bailey, sponsor for both the Theater Guild and the Eta Psi Cast, directed the first three plays of the year. Mr. Kenneth Erfft was director for "The Swan."

Alpha Psi Omega concluded its school year at Furman with the initiation service followed by a banquet, and twenty upperclassmen were initiated. The following officers were chosen for 1946-47: President, Jane Magruder, vice-president, Pearl Payne and secretary-treasurer, Barbara Gresham.

THETA TAU

Southwestern Louisiana Institute

Lafayette, La.

Two performances of "Junior Miss" gave dramatics at Southwestern a lusty revival. May 8 and 9 brought the Drama Guild's interpretation of "Guest in the House" to Burke Auditorium. Interpretative skill and technical competence combined to make an exciting show. "Evening Dress Indispensable," "Ladies of the Mop," "Nobody Sleeps," "The Bond Between," and "High Window" were produced in acting classes. One new script was tested.

Fannie DeJean, June Shultz, Marvella McMillan, Dot Hilliard, Julius Dubois, Fonda Thompson, Lee Mayer, and Judith Mouton assumed major responsibility for the rejuvenation of the chapter. Verne Powers is Director of Dramatics and Cast sponsor.



Scene from "The Swan," Miss Frances M. Bailey, director, Eta Psi cast. Furman Univ.

SIGMA

Linfield College

McMinnville, Oregon

Shirley L. LaBrenze

Under the able direction of Prof. Roy D. Mahaffey the Little Theatre group has presented six major productions and conducted two one-act play contests. The plays presented were, "Dark Victory," "Blithe Spirit," "The Little Foxes," "The Cradle Song," "Our Town" and "Uncle Harry." Many lauded "Our Town" as the most moving drama that has been presented at Linfield for many years. During the first semester a group of six one-acts directed by members of the advanced drama class, and cast entirely of freshmen were produced. Second semester another group of inter-sorority-fraternity plays were presented and prize money was awarded the best comedies and best tragedies.

The new president of Alpha Psi Omega is Shirley LaBrenze, vice-president, John Giltner, and secretary, Donna Rolph. Special awards for outstanding services rendered during the year were presented to Patsey and Roland Worth, Virgil Bornmeier, Yvonne Gray, and Roy Dancer.



Members of Cardinal Masque, Linfield College. Prof. R. D. Mahaffey, Director of Dramatics.



Iota Sigma Cast, Lowell State Teachers College, A. Florence Kirby, faculty director.

IOTA SIGMA

Lowell State Teachers College

Lowell, Mass.

A. Florence Kirby, Director

Iota Sigma has completed an unusually busy and exciting year. Several one act plays were read and discussed, and acting scenes presented from various selected plays. Our play of the year was "Shubert Alley" by Mel Dinelli. This play gave the modern touch for variety.

Two of our returned soldiers contributed much to the drama and worked untiringly to further the ideals of Alpha Psi Omega. The cast admitted the following new

members in the fraternity: Helen Attaquin, Ariadne Moshos, Ethel McTaggart, and James P. Savas.

The officers for 1945-1946 were: President, Shirley Sevrens, vice-president, Margaret Movsesian, treasurer, Daida Vinecour, and secretary, Helen Collins.

ETA

The College of Idaho

Caldwell, Idaho

Annabel Anderson

During the 1945-1946 season the three dramatic societies on The College of Idaho campus combined to produce their usual group of plays, consisting of two regular productions and a group reading. Season tickets to the three events were sold to theater patrons early in the fall. "Blithe Spirit" was given December 13 as the first number on the program. This was followed by a group reading of "The Little Foxes" on March 15 and a production of "The Barretts" on May 16. A final initiation of new members into The Scarlet Masque and into the Alpha Psi Omega on May 24 closed the dramatic activities for the year.

BETA KAPPA

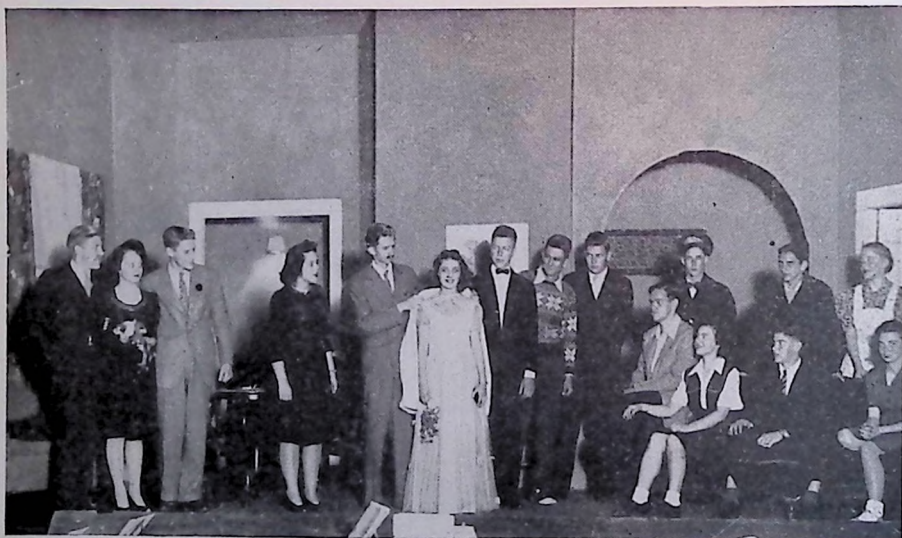
Upper Iowa University

Fayette, Iowa

Ivadell Brause

The Beta Kappa cast had a very successful year. The major production was "Junior Miss," presented at our annual homecoming to an enthusiastic audience. Several one-act plays were sponsored by our chapter during the year. Some of them are: "A Marriage Proposal," "A Cup of Tea," "Fright," "Curse You, Jack Dalton," and "Highness."

New members admitted to the Beta Kappa chapter were Kay Durnermuth, Connie Erion, Roberta Lockwood, Audrey Davis, and Arvid Stock.



"Junior Miss," Ivadell Brause, director, Upper Iowa University.

IOTA ETA

Queens College

Flushing, N. Y.

The first issue of The Promphook, our cast news letter, was in the nature of an invitation to our alumnae and student body to help us establish it as our theatrical publication with community significance... We are hoping the response will be encouraging.

On May 31 and June 1, the Queens College Playshop offered as its major production of the semester, the Seagull by Anton Chekhov. We also report with pleasure the production of "The Old Woman and Her Silver Brooch," an original play by Myron Rubin, at the yearly Drama Festival of the four city colleges at Brooklyn College.

The new officers of the Iota Eta Cast of Alpha Psi Omega are Carolyn Moskowitz, president; Lynne Rogers, vice-president; Arnold Rood, secretary-treasurer.

IOTA NU

Immaculata College

Immaculata, Penna.

Mary Ellen Quinn

In October, freshmen who had come out for dramatics gave two try-outs, the first a pageant celebrating the Centenary of the Foundation of the Sisters, Servants of the Immaculate Heart of Mary, who teach on the faculty; the second a revue, "Wee Blue Inn," featuring the freshmen. At Christmas the Cut and Curtain Players gave a Christmas pageant, "The King's Jongleur," written by the sponsor of Iota Nu Cast, Sister Mary Donatus. For National Drama Week February 3-9, an exhibition of costumes was sponsored by Iota Nu Cast.

In March, prospective members of the fraternity participated in three one-act plays about Ireland: "The Flight of the Gerald" and "A Brave New World," both original, and "The Monk and the Hermit," by Daniel Corkery, Irish dramatist. In early April, during Holy Week, we staged the annual Passion Play, with an original script in the spirit of the Oberammergau.

The climax of the year's events was the production of Rostand's "Cyrano de Bergerac" in January. In the Studio Workshop we were busy with writing scripts and producing one full length play, "Jane Eyre"; two others, "Rendezvous with Life" and the "Music Box"; several one-acters and try-out plays, with men from Saint Joseph's College, in Philadelphia taking the male leads. The newly-initiated members of the fraternity are at present working on the next big production in 1947—"Catherine of Aragon," an original script in three acts.

Two Cue and Curtain officers attended the Regional meeting of the National Catholic Theatre Conference in May in New York. With the publication of two issues of FOOTLIGHTS, and the News of Iota Nu Chapter, we brought to a close an unusually interesting and successful year.

THETA BETA

Georgia State College

Milledgeville, Ga.

Margaret Ann Wells

Miss Irma Stockwell served in capacity of dramatics director during the past season. Miss Edna West will return to direct the destinies of Theta Beta cast during 1946-47. The president of our cast during past season was Miss Bee McCormack, while our secretary was Miss Patsy Ingle.

"Junior Miss, "The Song of Bernadette," and "Angel Street," were our main productions for the year. Our shorter plays included: "Will o' the Wisp," "The Intruder," "For Distinguished Service," selections from "She Stoops to Conquer," "Enter the Hero," "Seeing Is Believing," and "A Woman of Judgment."

Thirty Seven

THETA ZETA

State Teachers College

Lock Haven, Pa.

Alpha Psi Omega members assisted this year in bringing to the campus the Clara Tree Major production of "Aladdin." The annual Christmas presentation was "The Nativity." With the return of some of our man power, College Players presented two three-act plays this past year: "Three's A Family" and "Susan and God," under the able direction of Miss Helen Thornton. A second performance of "Susan and God," was given for the benefit of the Lock Haven Hospital Fund.

Six members were initiated into Alpha Psi Omega this year: Dorothy Heston, Martha Badick, Virginia Speaker, Faye Bronson, Nancy Zimmerman and James Peet.



"Susan and God," Lock Haven State College, Miss Cordelia Bronz, director.

DELTA ETA

Northwestern State College

Natchitoches, La.

Five new members were initiated into the Delta Eta cast at Northwestern State College of Louisiana this spring. With the return of many service men to the campus, dramatic activity will be almost doubled this coming season. During the year several one act plays with student directors were produced. Most of the directors came from the senior dramatic organization, Davis Players. With the coming season, many more students will have become eligible for directing credit.

The major shows were "A Murder Has Been Arranged," and "Skidding," both directed by Dr. Robert B. Capel of the Speech Department.

CHI

Buena Vista College

Storm Lake, Iowa

Nancy J. Ford, M. A., Cast Director,
Professor of Speech Department

The Players of Buena Vista College gave a splendid presentation of Sidney Howard's comedy, "The Late Christopher Bean" to a large, enthusiastic audience. Players were: Bob McKenna, Elinor Adams, LoRaine Devereaux, Dar Kephart, Charles Olofson, Dorothy Picht, Louis Crouch and Vernon Kolb. Some one-act plays that were found most interesting were: "The Shepherd's Story," "Altering at the Altar," and "Antic Spring." No less exciting were stream-lined versions of William Shakespeare's "Romeo and Juliet" and "The Comedy of Errors."

Dependable workers behind scenes were: Daryl Stille, stage crew; "Penny" Marks, make-up; Jerry Schutter, lights; and Lola Laehr, property. The fraternity members entertained with a formal banquet and installation of new officers on May 29 at the Bradford Hotel.

GAMMA UPSILON

Northern Illinois State Teachers College De Kalb, Ill.

Gamma Upsilon cast of Alpha Psi Omega had a most active and interesting year on N. I.'s campus. The fall quarter production was "Claudia," by Rose Franken. Winter quarter saw "Kind Lady" by Edward Chodorov, under the lights; and during spring quarter, we gave two performances of "Soldier's Wife," by Rose Franken.

The cast now claims twenty active members, and during the year fifteen new members were pledged. On the spring trip to Chicago, thirty-two members of Alpha Psi saw "State of the Union." The spring banquet had an attendance of fifty-five, which establish a new record.

When the main building was redecorated, a large classroom was given to the speech department. The room has been equipped as a little theatre. For the large stage, we have a complete new set of scenery. A new ruling we have adopted and which is working very well, is that no chairman of a committee will leave his position until he has trained someone to take his place. During spring performance when the play was given two nights, Alpha Psi also admitted all faculty and students on their activity tickets. The cast also issued permanent free-admission cards to alumni for all Alpha Psi plays on campus.

The past season was one of the most successful artistically as well as financially. Dr. W. V. O'Connell is the director.

XI

State College

Chico, California

Anna Louise Barney, Director

Xi Cast is very happy to welcome back Dr. Harlan Adams, who was teaching at Stanford University during the war. Though short-handed the Department of Speech and Drama has been alive and functioning. We have managed to produce a number of one-acts, and at least one long play each year.

In the spring of 1945, we gave "The Cradle Song" so successfully that we feel that it is likely to be remembered as one of the most beautiful productions ever staged here. In the autumn we presented "Spider Island." The following semester, we gave "Papa Is All." Eldon Hunt did a fine job as Papa Aukamp. Joe Wadlington, our assistant director, produced a Pennsylvania Dutch interior that drew praise from several artists here.

One of the most interesting activities of the spring semester, 1946, was the radio production of a student written play which used the life of General John Bidwell, founder of Chico, as material. A sketch of the history of the college's annual Pioneer Day celebration was also given over KHSL. Members of Xi Cast were also to be credited with much of the success of the annual Pioneer Day Variety Show. Mildred Kuhnen was the general director of the show; and Fayne Porter, one of our returned veterans, the Master of Ceremonies



Anna Louise Barney, faculty director, Xi Cast.



Scene from "Wrong Numbers."



Doris Banhard, student director of "Spider Island."

BETA

Marshall College

Huntington, W. Va.

George Williams

"Suspect" was one of the most successful productions given by Beta Cast. It introduced to Huntington audiences Miss Catherine Martin who portrayed the role of Mrs. Smith to perfection. The second production, "Guest," was presented in conjunction with the Community Players. The final production of the year was "George Washington Slept Here." Many returned veterans aided in the production of this play. The play was produced under the direction of Ex-Capt. Clayton R. Page, a new member of the speech faculty.

Shirley Spradlin, Anna Hubbard, Cecil Simms, Norma Faye Brabe, and Russel Dunbar were actors who left this year. James R. Taylor, Joan Johnson, Betty Rawlins, and Ann Smith were members of our stage crew who graduated. At Christmas time we held a banquet in the Cabell Hotel as a farewell to Mr. Sanford Wheeler, our director, who left to work with Gamma Omega at Montana State College.

PHI

Colorado State College of Education Greeley, Colorado

Thelma Halmeister

Phi Cast of Colorado State College of Education presented Coward's "Blithe Spirit" and "Green Grew the Lilacs." These major productions were very successful, partly due to the return of interested veterans.

The shorter plays presented at Colorado State College were "The Monkey's Paw" and "Curse You, Jack Dalton." Miss Margaret Blackburn was director during 1945-46. Miss Helen Longworthy will be director during 1946-47. Thelma Halmeister served as president of the Dramatic Club, and Louise Huber as secretary-treasurer.

DELTA KAPPA

Mary Hardin Baylor College

Belton, Texas

Helen Osborne, Secretary

The long plays presented by Mary Hardin Baylor College were: "Family Portrait," "The Importance of Being Earnest," "Outward Bound," and the Centennial plays and an Easter Pageant. These were under the direction of Miss Emilie Johnson. The short plays staged were: "For Love of Allah," "Dark Minor," "More Perfect Union," and "Good Night Caroline."

Alpha Psi Omega

Statement of Accounts

INCOME

Balance in Bank July 1, 1944.....	\$ 470.80
Amount in U. S. Bonds.....	7,500.00
Income for year	
Membership and Charter fees	\$2,571.00
Shingles	16.25
Jewelry orders	862.22
Jewelry rebate	386.86

Total income 1944-45.. \$ 3,836.33

LIABILITIES

Shingles	\$ 61.19
Refund in fees	12.00
Bank charges	5.60
Dramatic Magazine	246.68
Postage	224.14
Secretarial expense	904.00
Printing and Stationery	223.86
Travel	70.00
PLAYBILL	709.62
U. S. War Bond	740.00
Jewelry orders	862.22

TOTAL EXPENSE

Cash in bank, June 30, 1945.....

U. S. Savings Bonds

TOTALS \$11,807.19 \$11,807.19

GAMMA KAPPA

State Teachers College

Edinboro, Penna.

Jane S. Ludgate

Three members were pledged to Gamma Kappa cast and will be initiated in October, 1946. They are Yvonne Davis, Therese Malinowski, and Joseph Spense.

During the first semester fourteen plays were given: "Where But in America," "The Lost Prince," "The Modern Masterpiece," "Overdue," "Three Potatoes for Mary," "The Powers That Be," "Did You Say Mink?" "Life Begins at 84," "The Rivals," "Sob Stuff," "Little Prison," "Saturday Evening," "Christmas Gift," and "Heigh Ho for the Holly."

During the second semester we were fortunate in having some former members who had been in the service and had had considerable experience with army shows. In spite of the lumber and cloth shortages we built two entirely new sets for the three-act comedy, "Nothing But the Truth." We found that by making a slight change in the plot that "Nothing But the Truth" could be made "up to the minute" in interest.



"Night Must Fall"



"Spider Island, Chico State College, directed by Anna L. Barney.



Scene from "The Silver Cord," Stratford College, Mrs. W. W. Parker, Director of Dramatics.



Scene from "Tovarich," Miss Elizabeth Flint, director, Pasadena, California Junior College.

DIRECTORY OF ALPHA PSI OMEGA

GRAND DIRECTOR

PROF. E. TURNER STUMP
Kent State University, Kent, Ohio

GRAND STAGE MANAGER

YETTA G. MITCHELL
New York University
Washington Square

GRAND BUSINESS MANAGER

DR. PAUL OPP
Box 347, Fairmont, West Virginia
(Address all communications to Grand Business Manager)

ALPHA, Fairmont State College,
Fairmont, W. Va.
BETA, Marshall College,
Huntington, W. Va.
GAMMA, Washington & Lee University,
Lexington, Va.
DELTA, Aetna University,
Wolfeboro, N. S. Canada.
EPSILON, Lynchburg College,
Lynchburg, Va.
ZETA, Western State College,
Gunnison, Colorado.
ETA, The College of Idaho,
Caldwell, Idaho.
THETA, Baker University,
Baldwin, Kans.
IOTA, University of Maryland,
College Park, Md.
KAPPA, Ottawa University,
Ottawa, Kans.
LAMBDA, Kentucky Wesleyan College,
Winchester, Ky.
MU, University of Texas,
Austin, Texas.
NU, Western Union College,
LeMars, Iowa.
XI, State Teachers College,
Chico, Calif.
OMICRON, Wilmington College,
Wilmington, Ohio.
PI, West Virginia University,
Morgantown, W. Va.
RHO, Lincoln Memorial University,
Harrington, Tenn.
SIGMA, Linfield College,
McMinnville, Ore.
TAU, Texas Technological College,
Lubbock, Texas.
UPSILON, Kansas Wesleyan University,
Salina, Kans.
PHI, Colorado Teachers College,
Greeley, Colo.
CHI, Buena Vista College,
Storm Lake, Iowa.
PSI, Lindenwood College,
St. Charles, Mo.
OMEGA, Iowa Wesleyan College,
Mt. Pleasant, Iowa.
ALPHA ALPHA, Concordia College,
Moorehead, Minn.
ALPHA BETA, Coker College,
Hartsville, S. C.
ALPHA GAMMA, Morningside College,
Sioux City, Iowa.
ALPHA DELTA, Tarkio College,
Tarkio, Mo.
ALPHA EPSILON, Westminster College,
Fulton, Mo.
ALPHA ZETA, Central College,
Pella, Iowa.

ALPHA ETA, Minnesota Teachers College,
Moorehead, Minn.
ALPHA THETA, McKendree College,
Lebanon, Ill.
ALPHA IOTA, Berea College,
Berea, Ky.
ALPHA KAPPA, University of Tampa,
Tampa, Fla.
ALPHA LAMBDA, Wisconsin State Teachers College,
Superior, Wis.
ALPHA MU, Emory and Henry College,
Emory, Va.
ALPHA NU, Colgate University,
Hamilton, N. Y.
ALPHA XI, Arkansas College,
Batesville, Ark.
ALPHA OMICRON, State Teachers College,
Bloomington, Pa.
ALPHA PI, Millsaps College,
Jackson, Miss.
ALPHA RHO, West Virginia Wesleyan College,
Buckhannon, W. Va.
ALPHA SIGMA, Louisiana College,
Pineville, La.
ALPHA TAU, University of Richmond,
Richmond, Va.
ALPHA UPSILON, State Teachers College,
Clarion, Pa.
ALPHA PHI, State Teachers College,
Valley City, N. Da.
ALPHA CHI, Shepherd State College,
Shepherdstown, W. Va.
ALPHA PSI, State Teachers College,
La Crosse, Wis.
ALPHA OMEGA, Augustana College,
Rock Island, Ill.
BETA ALPHA, Humboldt State College,
Arcata, California.
BETA BETA, Elmira College,
Elmira, New York.
BETA GAMMA, Bethany College,
Bethany, W. Va.
BETA DELTA, Washington and Jefferson College,
Washington, Pa.
BETA EPSILON, Rutgers University,
New Brunswick, N. J.
BETA ZETA, East Central State College,
Ada, Oklahoma.
BETA ETA, Huntingdon College,
Montgomery, Ala.
BETA THETA, University of Georgia,
Athens, Ga.
BETA IOTA, Valparaiso University,
Valparaiso, Ind.
BETA KAPPA, Upper Iowa University,
Fayette, Iowa.
BETA LAMBDA, University of Delaware,
Newark, Dela.
BETA NU, Northern Arizona State Teachers College,
Flagstaff, Ariz.

BETA XI, Concord State College,
Athens, W. Va.
BETA OMICRON, State Teachers College,
California, Pa.
BETA PI, William Jewell College,
Liberty, Mo.
BETA RHO, Nebraska State Teachers College,
Wayne, Neb.
BETA SIGMA, North Dakota State College,
Mayville, N. Dak.
BETA TAU, University of the South,
Sewanee, Tenn.
BETA UPSILON, New Mexico State College,
Silver City, N. Mex.
BETA PHI, Stephen F. Austin College,
Nacogdoches, Texas.
BETA CHI, Defiance College,
Defiance, Ohio.
BETA PSI, Kent State University,
Kent, Ohio.
BETA OMEGA, Keuka College,
Keuka Park, N. Y.
GAMMA ALPHA, Southeastern State College,
Durant, Okla.
GAMMA BETA, Trinity University,
San Antonio, Texas.
GAMMA GAMMA, Mississippi Woman's College,
Hattiesburg, Miss.
GAMMA DELTA, New Mexico Highlands University,
Las Vegas, N. Mex.
GAMMA EPSILON, Murray State Teachers College,
Murray, Ky.
GAMMA ZETA, Oklahoma City University,
Oklahoma City, Okla.
GAMMA ETA, Lenoir Rhyne College,
Hickory, N. C.
GAMMA THETA, Indiana Central College,
Indianapolis, Texas.
GAMMA IOTA, State Teachers College,
Alpine, Texas.
GAMMA KAPPA, State Teachers College,
Edinboro, Penna.
GAMMA LAMBDA, Baylor University,
Waco, Texas.
GAMMA MU, Muhlenberg College,
Allentown, Penna.
GAMMA NU, Bluffton College,
Bluffton, Ohio.
GAMMA XI, Dickinson State Teachers College,
Dickinson, N. Dak.
GAMMA OMICRON, Shurtleff College,
Alton, Ill.
GAMMA PI, Bessie Tift College,
Forsythe, Ga.
GAMMA RHO, Northwestern State College,
Alva, Okla.
GAMMA SIGMA, Maryland College for Women,
Lutherville, Md.
GAMMA TAU, University of South Carolina,
Columbia, S. C.

GAMMA Upsilon, State Teachers College, De Kalb, Ill.

GAMMA Phi, Billings Polytechnic Institute, Billings, Mont.

GAMMA Chi, Southwestern State Teachers College, Weatherford, Okla.

GAMMA Psi, Roanoke College, Salem, Va.

GAMMA Omega, Montana State College, Bozeman, Mont.

DELTA Alpha, University of New Brunswick, Fredericton, N. B., Canada

DELTA Beta, Alma College, Alma, Mich.

DELTA Gamma, Alderson-Brandenburg College, Philippi, W. Va.

DELTA Delta, Hampden-Sydney College, Hampden-Sydney, Va.

DELTA Epsilon, North Central College, Naperville, Ill.

DELTA Zeta, University of Dubuque, Dubuque, Iowa.

DELTA Eta, Louisiana State Teachers College, Natchitoches, La.

DELTA Theta, State Teachers College, Minot, N. Dak.

DELTA Iota, Ouchita College, Arkadelphia, Ark.

DELTA Kappa, Baylor College, Belton, Texas.

DELTA Lambda, State Teachers College, Tempe, Ariz.

DELTA Mu, Winthrop College, Rock Hill, S. C.

DELTA Nu, Southern College, Lakeland, Fla.

DELTA Xi, Rensselaer Polytechnic Institute, Troy, N. Y.

DELTA Omicron, Doane College, Crete, Neb.

DELTA Pi, Missouri School of Mines, Rolla, Missouri.

DELTA Rho, Trinity College, Hartford, Conn.

DELTA Sigma, Bethel College, Newton, Kans.

DELTA Tau, Ursinus College, Collegeville, Pa.

DELTA Upsilon, Texas Christian University, Fort Worth, Texas.

DELTA Phi, Slippery Rock State Teachers College, Slippery Rock, Pa.

DELTA Chi, Panhandle Agri. and Mech. College, Goodwell, Okla.

DELTA Psi, Mississippi State College, Columbus, Miss.

DELTA Omega, Judson College, Marion, Ala.

ZETA Alpha, Abilene Christian College, Abilene, Texas.

MANUAL ARTS PLAYERS, Stout Institute, Menominee, Wis.

ZETA Gamma, Simpson College, Indianola, Iowa.

ZETA Delta, Arkansas State College, Conway, Arkansas.

ZETA Epsilon, Delta State Teachers College, Cleveland, Miss.

ZETA Zeta, Bethany College, Lindsborg, Kans.

ZETA Eta, State Teachers College, St. Cloud, Minn.

ZETA Theta, Hardin Simmons University, Abilene, Texas.

ZETA Iota, Drexel Institute, Philadelphia, Pa.

ZETA Kappa, Davidson College, Davidson, N. Car.

ZETA Lambda, Peru State Teachers College, Peru, Neb.

ZETA Mu, Ashland College, Ashland, Ohio.

ZETA Nu, Armstrong College, Berkeley, California.

ZETA Xi, La Verne College, La Verne, California.

ZETA Omicron, Hendrix College, Conway, Ark.

ZETA Pi, Mercer University, Macon, Ga.

ZETA Rho, State Teachers College, Florence, Ala.

ZETA Sigma, Curry College, Boston, Mass.

ZETA Tau, Texas College of Mines, El Paso, Texas.

ZETA Upsilon, Heidelberg College, Tiffin, Ohio.

ZETA Phi, Eastern Teachers College, Richmond, Ky.

ZETA Chi, Union College, Barbourville, Ky.

ZETA Psi, Tri-State College, Angola, Ind.

ZETA Omega, Woman's College of N. C., Greensboro, N. Car.

RED MASQUE, University of Houston, Houston, Texas.

ETA Alpha, Marietta College, Marietta, Ohio.

ETA Beta, Carson-Newman College, Jefferson City, Tenn.

ETA Gamma, Virginia Polytechnic Institute, Blacksburg, Va.

ETA Delta, Central State Teachers College, Stevens Point, Wis.

ETA Epsilon, Spring Hill College, Mobile, Ala.

ETA Zeta, Upsilon College, East Orange, N. J.

ETA Eta, Mary Washington College, Fredericksburg, Va.

ETA Theta, Norwich University, Northfield, Vt.

ETA Iota, West Texas State Teachers College, Canyon, Texas.

ETA Kappa, York College, York, Neb.

ETA Lambda, Milligan College, Milligan College, Tenn.

ETA Mu, Butler University, Indianapolis, Ind.

ETA Nu, Meredith College, Raleigh, N. Car.

ETA Xi, Blue Ridge College, New Windsor, Md.

ETA Omicron, Carthage College, Carthage, Ill.

ETA Pi, Mississippi State College, State College, Mississippi.

ETA Rho, West Liberty State College, West Liberty, W. Va.

ETA Sigma, State Teachers College, Troy, Ala.

ETA Tau, University of Florida, Gainesville, Fla.

ETA Upsilon, Bridgewater College, Bridgewater, Va.

ETA Phi, Youngstown College, Youngstown, Ohio.

ETA Chi, Pacific University, Forest Grove, Oregon.

ETA Psi, Furman University, Greenville, S. C.

ETA Omega, Harding College, Searcy, Arkansas.

THETA Alpha, Glenville State College, Glenville, W. Va.

THETA Beta, Georgia State College for Women, Milledgeville, Ga.

THETA Gamma, La Grange College, La Grange, Ga.

THETA Delta, The University of Tennessee, Knoxville, Tenn.

THETA Epsilon, McPherson College, McPherson, Kansas.

THETA Zeta, State Teachers College, Lock Haven, Pa.

THETA Eta, Hood College, Frederick, Md.

THETA Theta, Waynesburg College, Waynesburg, Pa.

THETA Iota, Western Carolina College, Cullowhee, N. C.

THETA Kappa, San Francisco State College, San Francisco, Calif.

THETA Lambda, Georgia State Teachers College, Collegeboro, Georgia.

THETA Mu, State Teachers College, Duluth, Minn.

THETA Nu, Oakland City College, Oakland City, Ind.

THETA Xi, George Peabody College, Nashville, Tenn.

THETA Omicron, Texas Wesleyan College, Fort Worth, Texas.

THETA Pi, Pacific Lutheran College, Parkland, Washington.

THETA Rho, Whitworth College, Spokane, Washington.

THETA Sigma, Missouri Valley College, Marshall, Mo.

THETA Tau, Southwestern La. Institute, Lafayette, Louisiana.

THETA Upsilon, Radford State College, Radford, Virginia.

THETA Phi, Susquehanna University, Selingsgrove, Pa.

THETA Chi, Eastern Oregon College, La Grande, Oregon.

THETA Psi, Augustana College, Sioux Falls, S. D.

THETA Omega, Wake Forest College, Wake Forest, N. C.

IOTA Alpha, Pembroke State College, Pembroke, N. C.

IOTA Beta, River Falls State College, River Falls, Wis.

IOTA Gamma, Cedar Crest College, Allentown, Pa.

IOTA Delta, McMurry College, Abilene, Texas.

IOTA Epsilon, Bridgewater State College, Bridgewater, Mass.

IOTA Zeta, Mercyhurst College, Erie, Pa.

IOTA Eta, Queens College, Flushing, New York.

IOTA Theta, Moravian College for Women, Bethlehem, Pa.

IOTA Iota, Sam Houston State College, Huntsville, Texas.

IOTA Kappa, Macalester College, St. Paul, Minn.

IOTA Lambda, State College of Education, Cheyney, Washington.

IOTA Mu, University of Dayton, Dayton, Ohio.

IOTA Nu, Immaculata College, Immaculata, Pa.

IOTA Xi, Incarnate Word College, San Antonio, Texas.

IOTA Omicron, State Teachers College, East Stroudsburg, Penna.

IOTA Pi, Our Lady of the Lake College, San Antonio, Texas.

IOTA Rho, Coe College, Cedar Rapids, Iowa.

IOTA Sigma, State Teachers College, Lowell, Mass.

IOTA Tau, Huron College, Huron, South Dakota.

IOTA Upsilon, Siena Heights College, Adrian, Mich.

IOTA Phi, American University, Washington, D. C.

IOTA Chi, Columbia College, Columbia, South Carolina.

IOTA Psi, Manchester College, North Manchester, Indiana.

IOTA Omega, Davis-Elkins College, Elkins, W. Va.

KAPPA Alpha, Berry College, Mount Berry, Georgia.

KAPPA Beta, Quincy College, Quincy, Ill.

KAPPA Gamma, S. W. Mo. State, Springfield, Mo.

KAPPA Delta, Middle Tenn. State College, Murfreesboro, Tenn.

KAPPA Epsilon, Marylhurst College, Marylhurst, Oregon.

KAPPA Zeta, Fenn College, Cleveland, Ohio.

KAPPA Eta, Ferris Institute, Big Rapids, Michigan.

KAPPA Theta, Central Mich. State College, Mt. Pleasant, Mich.

A New Generation Faces the Future with Confidence

These resolute young people will succeed, especially if they **PLAN** wisely and carry through with convictions.

PLANNING is the Key!

We urge all Balfour friends and customers to **PLAN** their gift needs and requirements for their social season *as far in advance as possible.*

Materials are still scarce. Transportation has slowed even more. More time is required for making.

We are sure we can depend upon your cooperation to make Balfour Quality and Service possible.



YOUR COPY OF THE
**NEW BALFOUR BLUE
BOOK** MAILED FREE
FOR THE ASKING . . .
AND SAMPLES OF STA-
TIONERY TO THOSE
INTERESTED.

★

S T A T I O N E R Y
P R O G R A M S
I N V I T A T I O N E
P L A C E C A R D S
L E A T H E R G I F T S
F R A T E R N I T Y J E W E L R Y
R I N G S

★

On party **FAVORS** we in-
vite correspondence—give
quantity and budget as
well as when needed—**plan**
your needs in advance.

Official Jeweler to ALPHA PSI OMEGA

L. G. BALFOUR COMPANY

ATTLEBORO, MASSACHUSETTS

. . . . In CANADA we refer you to our associates—BIRKS in Association

—DRAMATICS MAGAZINE—

Articles Scheduled for Publication During the 1946-47 School Season

ACTORS AND ACTRESSES OF OTHER LANDS. In a series of seven extremely interesting articles, Paul Myers, young Broadway drama critic and member of the Theatre Collection staff of the New York Public Library, discuss the following world-famous stage personalities: Sir Henry Irving, Mei Lanfang, Alla Nazimova, Eleanora Duse, Helen Modjeska, Benoit Constant Coquelin, and Thommaso Salvini. These articles are designed primarily to enrich your student's knowledge of the theatre. Ideal material for your dramatics club meetings and classes.

STAGING THE ONE-ACT PLAY. This series of seven articles will bring you a wealth of helpful and timely information on the art of presenting the one-act play. The series will open with a discussion of the one-act play as theatre by Professor R. C. Hunter of Ohio Wesleyan University. The well-known playwright, Elizabeth McFadden, will follow with an article on "Writing the One-Act Play." The next five articles will be presented by Talbot Pearson of the Carnegie Institute of Technology. His articles will discuss selection of the one-act play for production, directing the one-act drama, comedy, farce, melodrama, and fantasy. Here is material designed to improve your skill as a director of one-act plays.

DESIGNING THE STAGE SET. Professor A. S. Gillette of the University of Iowa Theatre will offer you a series of seven highly informative articles on how to design sets for the theatre. His material is written primarily for directors in high schools and colleges who desire helpful, non-technical information. Both you and your dramatics students will enjoy reading these articles.

ARTICLES ON OTHER ASPECTS OF THE THEATRE. Each issue of DRAMATICS MAGAZINE will also bring you and your dramatics students interesting articles touching upon various phases of dramatic activities. Here are just a few of the articles scheduled for publication during 1946-47: "Organization of the Soviet Theatre," "Building an Amateur Audience," "A Project in Creative Dramatics," "Building a Stage Tree," "Production on the Handicapped Stage," and "Your Dramatics Club Program."

ONE-ACT PLAY

Each issue of DRAMATICS MAGAZINE will also bring you a one-act play especially chosen for its educational and theatre values for amateur drama groups. Especial consideration will be given to plays suitable for production by high schools and colleges. This service alone is worth the price of a year's subscription.

DEPARTMENTS

THEATRE ON BROADWAY. Each issue of DRAMATICS MAGAZINE brings you a two-page department concerning the latest developments on Broadway, reported by Paul Myers. Attention is directed to new plays of interest to educational theatre groups. You'll enjoy keeping up with Broadway as reported by Mr. Myers.

THE PLAY OF THE MONTH. Each issue of our magazine will also bring you an account of the actual production of an outstanding play chosen for its value to amateur theatre groups, prepared under the editorship of Dr. Earl W. Blank of Berea College. Among plays scheduled for discussion during 1946-47 are: *Ramshackle Inn*, *Dear Ruth*, *Snafu*, *Blithe Spirit* and *I Remember Mama*.

THE RADIO PROGRAM OF THE MONTH. S. I. Scharer of the Radio Department of New York University will offer each month a two-page department devoted to an outstanding radio program on the air during the season. His articles are written primarily to stimulate interest among students in the better radio program. Excellent material for club discussions.

DRAMA FOR CHILDREN. Every other issue of our magazine will bring you a two-page department devoted to news and developments pertaining to children's theatre activities, reported by Louise C. Horton, well-known leader in the Children's Theatre movement.

THE FILM OF THE MONTH. You and your students will want to follow the latest developments in Hollywood's outstanding films of the season as reported by Harold Turney of the Drama Department of Los Angeles City College. Mr. Turney secures his information directly from the leading film producers.

ON THE HIGH SCHOOL STAGE. Through reports and pictures published in this department, you and your students will be kept informed on the latest developments occurring in the high school theatre. A rich source of helpful information for high school directors.

WHAT'S NEW AMONG BOOKS AND PLAYS. The latest books and plays are reviewed by a staff of experienced dramatics directors. Emphasis is placed upon the selection of materials especially suited for the educational theatre.

DETACH HERE

ORDER FROM

The National Thespian Society

COLLEGE HILL STATION - CINCINNATI 24, OHIO

I (We) enclose \$_____ for a _____ year subscription for DRAMATICS MAGAZINE.
One Year \$2.50. Two Years \$4.50 (Canada \$2.75, Foreign \$3.00)

Name _____ Street or Institution _____

City and Zone _____ State _____

PUBLICATIONS RECOMMENDED FOR DRAMATICS DIRECTORS AND STUDENTS

- Syllabus for a Proposed Course in Dramatics at the High School Level.** Prepared originally by a committee of high school teachers for the American Educational Theatre Association. Contains units of study on History of Drama, Types of Drama, Technique, Interpretation, Criticism, Radio Appreciation, Motion Picture Appreciation, and Extra-Curricular Dramatics. Extensive bibliography. Price. \$1.00
- Dramatics Director's Handbook (Revised Edition).** Edited by Ernest Bavely. Contains a comprehensive discussion on how to teach dramatics at the secondary school level, by Katharine Ommanney, a thorough discussion on the organization of the production staff, play rehearsal schedule, publicity, preparation of handbills, etc. Price. \$1.30
- A Directory of Plays for All-Female Casts.** Prepared by a committee of dramatics directors. Contains a descriptive statement of over 400 titles of one and three-act plays. Price. \$0.50
- Planning and Equipping the Modern Educational Theatre,** by A. S. Gillette, Technical Director, University Theatre, State University of Iowa. A timely and authoritative publication on designing and furnishing the school theatre in terms of present-day requirements. Especially recommended for directors and school administrators. Price. \$0.60
- How They Were Staged,** edited by Earl W. Blank, Berea College. An amazing source of information for directors in schools, colleges, and community theatres. Contains a complete discussion on the actual casting, directing, costuming, advertising and staging of each of the following outstanding plays chosen for their suitability for amateur theatre groups: Junior Miss, Arsenic and Old Lace, What a Life, Stage Door, Two On An Island, Ladies in Retirement, Zaraguetta, Everyman, Boston Blues, The Green Vine, The Imaginary Invalid, The Eve of St. Mark, Lost Horizon, Sun-Up, Icebound, The Importance of Being Earnest, The Torch-Bearers, Nothing But the Truth, For Her Child's Sake, Kind Lady, Three Cornered Moon, The Trail of the Lonesome Pine, Charley's Aunt, Tish, The Fighting Littles, Captain Applejack, Skidding, Out of the Frying Pan, Snow White and the Seven Dwarfs, Green Stockings, Seven Keys to Baldpate, Peter Pan, Lavender and Old Lace, Outward Bound, Candida, Pride and Prejudice, Moor Born, Murder in a Nunnery, Cyrano de Bergerac, The Cradle Song, Family Portrait, Death Takes a Holiday, and Letters to Lucerne. Price. \$1.60
- Assembly Program Suggestions,** enlarged edition edited by Ernest Bavely. Based upon actual programs sponsored by schools. Price. \$0.50
- Theatres of Yesterday and Today,** by Barnard Hewitt, Brooklyn College. A series of seven articles reprinted from Volume XVII (season of 1945-46) of DRAMATICS MAGAZINE: "The Greek Theatre", "The Elizabethan Theatre", "The Baroque Theatre", "The Romantic Theatre", "The Naturalistic Theatre", "The Symbolist Theatre", "The Epic Theatre". (Group order of ten or more copies, 40c each.) Price. \$0.50
- Teaching Students How to Direct Plays,** by C. Lowell Lees, University of Utah. A series of seven articles reprinted from Volume XVII (season of 1945-46) of DRAMATICS MAGAZINE: "More Plays Through Student Directors", "What's in a Play", "Painting Action Pictures", "Seeing the Play as a Production", "Finding the Cast", "The Actor's Best Foot Forward", "Tying the Play Together". Excellent material for use in the dramatics club. (Group order of ten or more copies, 30c each.) Price. \$0.40

USE THE ORDER FORM FOUND BELOW

..... Detach Here

THE NATIONAL THESPIAN SOCIETY

Devoted to the Advancement of Dramatic Arts in the Secondary Schools

COLLEGE HILL STATION

CINCINNATI 24, OHIO

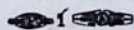
I (We) enclose \$..... for which please send me (us) the publications checked below:

- | | |
|--|--------|
| <input type="checkbox"/> Syllabus for a Proposed Course in High School Dramatics | \$1.00 |
| <input type="checkbox"/> Dramatics Director's Handbook (Revised Edition) | \$1.30 |
| <input type="checkbox"/> Directory of Plays for All-Female Casts | \$0.50 |
| <input type="checkbox"/> Planning and Equipping the Modern Educational Theatre | \$0.60 |
| <input type="checkbox"/> How They Were Staged | \$1.60 |
| <input type="checkbox"/> Assembly Program Suggestions (Enlarged edition) | \$0.50 |
| <input type="checkbox"/> Theatres of Yesterday and Today | \$0.50 |
| <input type="checkbox"/> Teaching Students How to Direct Plays | \$0.40 |

Name

Street

City State



FAIRMONT PRINTING COMPANY
FAIRMONT, W. VA.