

2005

Blinn College    McNeese State University    College of William & Mary    Concordia University

Wesleyan College    Fayetteville State University    Hardin-Simmons University    Troy University

**A l p h a   P s i   O m e g a   &   D e l t a   P s i   O m e g a**

Murray State College    North Carolina A & T University    Piedmont College    Converse College

State University of New York at Oswego    Kean University    University of North Alabama    Whittier College

Transylvania University    Tyler Junior College    University of Nebraska at Kearney

Missouri Southern State University

Centenary College of Louisiana

University of Richmond

Taylor University



# Playbill

Vol. XXVIII

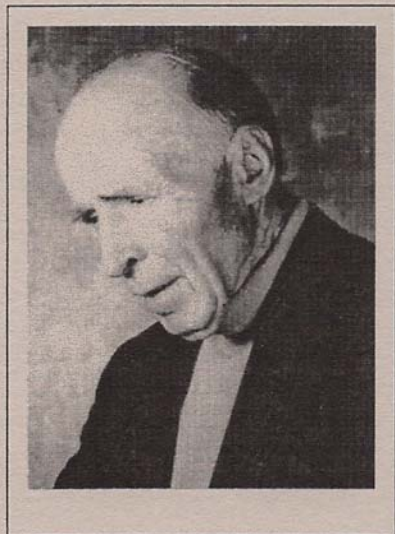
University of Southern Mississippi    Meredith College

**H i s t o r y    C h a p t e r s   i n   A c t i o n    S c h o l a r s h i p   W i n n e r s**

Lyon College    University of Mary Washington    Wabash College    Stephen F. Austin State University



# History of Alpha Psi Omega/Delta Psi Omega



The organization, development, and growth of Alpha and Delta Psi Omega is a result of the widespread interest of colleges and universities of America in the dramatic arts in the early twentieth century. By 1920 most colleges had some kind of a dramatic club that was staging annual play productions for students and its local community. The little theatre movement and dramatic workshop idea made its appearance about that time and greatly stimulated the importance of the college drama and the worthwhile nature of the programs presented. This was especially true in western colleges, and by 1920 several national honor societies to recognize and reward student participation in play production had been organized.

Alpha Psi Omega, the first of these societies to be founded in the East, was organized at Fairmont State College in Fairmont, West Virginia on August 12, 1925. The college theatre idea had begun to manifest itself in Fairmont about 1921, and, in 1923, a faculty director was employed, and an organization, called the Masquers, was instituted to present an annual program of four or five major theatre productions for students and the public. In 1924, the Masquers began to consider membership in some national honor society in dramatics as a means of rewarding its most faithful and loyal workers. Plans for forming such a national organization were seriously studied by a committee, composed of Elinor B. Watson, Robert Sloan, and Paul F. Opp, faculty director of dramatics at Fairmont. A proposed national constitution was drawn up, and, on August 12, 1925, those members of the Masquers who met the qualifications of the honor society approved the constitution and adopted the name, Alpha Psi Omega. It was decided that each chapter was to be called a "cast," and Fairmont became Alpha Cast. The interest of Marshall College in Huntington, West Virginia assured the immediate national character of Alpha Psi Omega with the establishment of Beta Cast. A member of Beta Cast suggested the name *Playbill*, for the national magazine.

During the course of the next year, eighteen new chapters were admitted, and twenty chapters were on the roll at the time of the meeting of the first national convention, at the Palmer House in Chicago, Illinois, on December 27-28, 1926. National conventions, called Grand Rehearsals, are held every five years; in recent years, these meetings have been held at the annual Southeastern Theatre Conference.

Alpha Psi Omega has sponsored the formation of honor societies in high schools and junior colleges, thus encouraging dramatic production at every step in a student's career, from the preparatory school to college graduation. Delta Psi Omega was organized among the junior colleges in 1929, and now has a membership of more than 350 chapters. The Alpha Psi Omega Grand Rehearsal meeting at St. Louis in 1936 voted to recognize Delta Psi Omega as an affiliated junior college division.

Alpha Psi Omega has enjoyed continuous national growth, and with over 600 chapters is the largest national honor society in America. Membership in Alpha Psi Omega is granted only to fully accredited institutions with a four-year curriculum in theatre and drama leading to a degree.

The business of Alpha and Delta Psi Omega is supervised by elected national officers. Such names as Paul Opp, Yetta Mitchell, Donald Garner, Jerry Henderson, and Susan S. Cole are familiar to longtime member casts as officers spanning the years from the 1920s to the 1980s. Current officers are E. Teresa Choate (President), Frankie Day (Vice President), and James Fisher (National Business Manager and Editor of *Playbill*).

---



2005

# Table of Contents

Alpha Psi Omega/Delta Psi Omega Playbill

A History of APO/DPO .....	Inside Front Cover
Table of Contents, Officers, Regional Representatives, and Nominee for new National Business Manager.....	1-4
2005 APO/DPO Scholarship Recipients.....	5-6
Policies of Pledging, Hazing, and Initiation Ceremony.....	7

## The Casts:

Blinn College .....	18
Centenary College of Louisiana .....	14-15
College of William & Mary .....	32
Concordia University.....	17
Converse College.....	23
Fayetteville State University .....	28
Hardin-Simmons University .....	29
Kean University .....	27
Lyon College.....	9
McNeese State University.....	26
Meredith College .....	12
Missouri Southern State University .....	19
Murray State College.....	32
North Carolina A&T University.....	36
Piedmont College.....	22
State University of New York at Oswego.....	24
Stephen F. Austin State University .....	35
Taylor University .....	34
Transylvania University .....	18
Troy University.....	33
Tyler Junior College .....	25
University of Mary Washington.....	13
University of Nebraska at Kearney .....	16
University of North Alabama.....	30-31
University of Richmond.....	20
University of Southern Mississippi.....	8
Wabash College .....	10-11
Wesleyan College.....	12
Whittier College .....	21



# Playbill



**Playbill** is published annually by Alpha Psi Omega/Delta Psi Omega to afford college and university theatre organizations the opportunity to acquaint themselves with what is being done by their contemporaries and to serve as the official communication organ of the society. Direct all business communications to: James Fisher, Theater Department, Wabash College, Crawfordsville, IN 47933. Phone: (765) 361-6394. Email: [fisherj@wabash.edu](mailto:fisherj@wabash.edu).

Grateful acknowledgment to Teresa Choate, Frankie Day, Eileen Bowen, Laura Conners, Dana Fisher, Sterling Carter, Braden Pemberton and Kwik Kopy Printing for assistance in the preparation and mailing of **Playbill**.

The Jerome Lawrence and Robert E. Lee Theatre Research Institute at the Ohio State University houses the archives of Alpha Psi Omega/Delta Psi Omega. Information can be obtained by writing to: The Jerome Lawrence and Robert E. Lee Theatre Research Institute, The Ohio State University, 1800 Cannon Drive, Columbus, OH 43210-1230. Phone: (614) 292-6614.

## National Officers



**E. Teresa Choate (President)**

Department of Theatre  
School of Visual and Performing Arts  
Kean University  
Union, NJ 07083  
(908) 737-4427  
Email: [choatet@cougar.kean.edu](mailto:choatet@cougar.kean.edu)  
FAX: (908) 820-3741



**Frankie Day (Vice President)**

Department of Theater  
North Carolina A&T University  
1601 E. Market Street  
Greensboro, NC 27411  
(336) 334-7852  
Email: [frankie@ncat.edu](mailto:frankie@ncat.edu) or  
FAX: (336) 334-4741



**James Fisher (National Business Manager)**

Theater Department  
Wabash College  
Crawfordsville, IN 47933  
(765) 361-6394  
Email: [fisherj@wabash.edu](mailto:fisherj@wabash.edu)  
FAX: (765) 361-6341



# Meet Your Regional Representatives

Become acquainted with your regional representative. They are there to assist you in carrying out the activities of Alpha Psi Omega and Delta Psi Omega.

**REGION 1 REPRESENTATIVE:** (Washington, Oregon, Wyoming, Alaska, Idaho, Montana, California, Arizona, Hawaii, Nevada, Utah)

Prof. Brian Reed, Theater Department, Whittier College  
13406 Philadelphia Street, Whittier, CA 90601-4413  
Phone: (562) 907-4831  
Email: breed@whittier.edu

**REGION 2 REPRESENTATIVE:** (Colorado, Iowa, Kansas, Minnesota, Missouri, Nebraska, North Dakota, South Dakota, Illinois, Indiana, Michigan, Ohio, Wisconsin)

Prof. Jack Garrison, Department of Theater, University of Nebraska at Kearney  
905 West 25th Street, Kearney, NE 68849  
Phone: (308) 865-8409  
Email: garrisonj@unk.edu

**REGION 3 REPRESENTATIVE:** (Connecticut, Maine, Massachusetts, New Hampshire, Rhode Island, Vermont, Maritime Provinces, Maryland, Delaware, DC, New Jersey, New York, Pennsylvania)

Dr. Ardencie Hall-Karambe, Theater Department  
Community College of Philadelphia  
1700 Spring Garden Street, Philadelphia, PA 19130  
Phone: (215) 751-8660  
Email: AhallKarambe@ccp.edu

**REGION 4 REPRESENTATIVE:** (Alabama, Florida, Georgia, Kentucky, Mississippi, North Carolina, South Carolina, Tennessee, Virginia, West Virginia, Puerto Rico)

Prof. John Bald, Theater Department, Converse College  
580 East Main Street, Spartanburg, SC 29302-0006  
Phone: (864) 596-9067  
Email: john.bald@converse.edu

**REGION 5 REPRESENTATIVE:** (Arkansas, Louisiana, New Mexico, Oklahoma, Texas)

Prof. Robert Buseick, Theater Department, Centenary College  
2911 Centenary Blvd., Shreveport, LA 71134-1188  
Phone: (318) 869-5075  
Email: rbuseick@centenary.edu

**DELTA PSI OMEGA REPRESENTATIVE:**

Prof. Lisa Coulter, Drama Department, Murray State College  
1 Murray Campus Street, Tishomingo, OK 73460  
Phone: (580) 371-2371  
Email: lcoulter@mscok.edu



## Meet Dr. Bret Jones

Designated Nominee for the APO/DPO National Business Manager position



On Friday, March 3, 2006 at the National Meeting of Alpha Psi Omega/Delta Psi Omega at the Southeastern Theatre Conference at the Wyndham Resort in Orlando, Florida, the APO/DPO membership will elect a new National Business Manager upon the retirement of James Fisher after twenty years in the position.

After a lengthy search, the National Officers have designed Dr. Jones for this position.

Dr. Jones is a longtime APO member from the Beta Zeta cast of East Central University in Ada, Oklahoma, where he received his undergraduate education. He holds a Ph.D in Education and an M.A. in Drama from the University of Oklahoma and is now Assistant Professor of Drama and Director of Theatre at his alma mater, ECU. He teaches a wide range of courses in Speech, Acting, Directing, Play Analysis, Scriptwriting, and Theatre History while supervising Summer Repertory, advising theatre majors, managing the ECU box office, and, of course, serving as faculty sponsor for ECU's APO chapter. His plays, *Kindred*, *The Mouth of the Lion*, and *The Isolation House* have won awards, and he received the Outstanding Young College Teacher award from the Oklahoma Speech Theatre Communication Association in 2000.

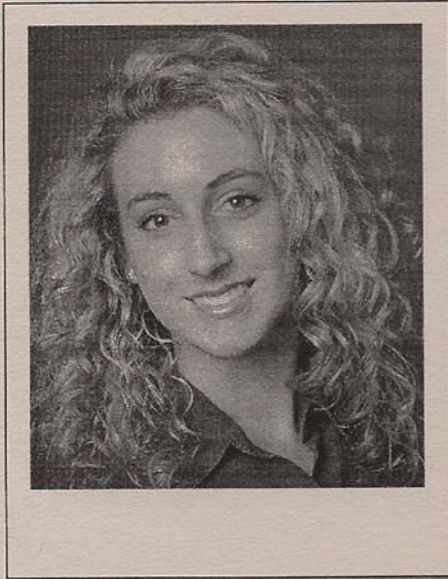


# 2005

## Alpha Psi Omega/Delta Psi Omega

### Scholarship Recipient

#### Christina Whitaker



In nominating Christina Whitaker for the 2005 APO/DPO Scholarship, Dr. Ann M. Demling of Brenau University commented on Christina's "sweet and sunny personality," which was plainly in evidence when Christina attended the national meeting of APO/DPO at the Southeastern Theater Conference in Greensboro, North Carolina, in early March 2005. Dr. Demling notes that Christina "is a young woman who lights up my day whenever I see her...as a student she is on task, polite to others, and enthusiastic about the material...[She] is one of those invaluable, unsung heroes, who does not seek recognition but who is the lifeblood of the organization with her quiet and steady dedication." Dedication – a word often used to describe the outstanding students who are nominated for this scholarship. It is a necessary trait for those doing theater in any venue and Christina is undoubtedly going to be a bright light in the world of theater. Christina, a double major in musical theater and mass communication, who believes that her combination of majors will make her "future rewarding," as she writes in her scholarship essay. Christina's goals for the future include "high aspirations of being able to maintain steady employment as a performer, scenic artist, or sound designer in the professional market. One way I plan to accomplish this is by auditioning and submitting resumes relentlessly, and by not covering in the face of rejection. As any artist knows, the life of a professional artist is never easy, and nothing is served on a silver platter. I am ready and willing to make the necessary sacrifices and accept the rejection and applause associated with the professional theater world." With a positive attitude like Christina's – and her obvious skills and talents – she will surely be successful.



Christina Whitaker, third from left, in *Anything Goes!*



Christina Whitaker, second from right, in *Ragtime*

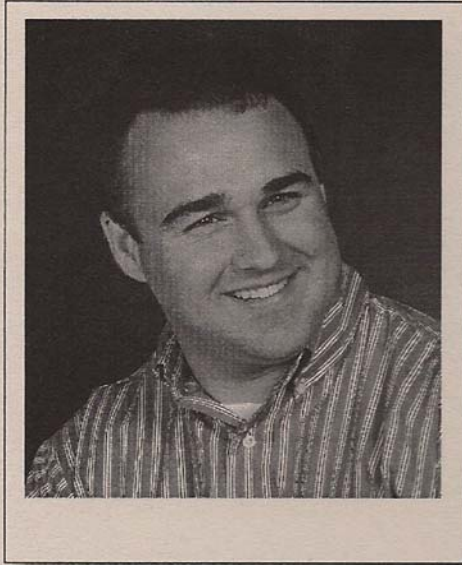


# 2005

## Alpha Psi Omega/Delta Psi Omega

### Scholarship Recipient

#### Aaron Thompson



Aaron Thompson is "a trusted (invaluable) member of production teams," writes Professor Susan Anthony of DePauw University's Department of Communication Arts and Theater. In recent times, as an intern with the American Ballet Theatre, Herron/Penn Productions, AMD Design, and the Metropolitan Arts Council of Birmingham, Aaron has immersed himself in the practice of theater. "Aaron works well with cast members, directors and members of the crew. His written work is well organized and thoughtful. He is able to juggle many competing obligations at the same time. He exhibits resourcefulness and tenacity in seeking out further training to enhance his skills," continues Professor Anthony. Aaron plans pursuing an advanced degree in theater management who finds himself inspired by companies like Cirque du Soleil that, as he says, "not only produce an excellent artistic product that entertains, but is also a very financially viable company." He wisely explains that "in theater, it seems we often learn by trial and error" and that the responsibility of a theater manager is to allow for that creative process while supporting the lives of the employees of a particular company or theater – and to ensure the survival of that entity. In earning his degree in theater management, Aaron aspires to "become an asset to my hometown of Birmingham, Alabama," where he hopes "to open a good regional theater" to fill what he calls an "arts vacuum" there. To do this, he sees the need to "become the most well-rounded theater professional possible. "I want to be the person that ensures the continued success of the performing arts," Aaron says, and he has chosen not only a demanding and difficult path to a goal that can reward not only Aaron himself, but also an entire community.

---



# Policies on Pledging Hazing and Initiation Ceremony

## **Invitation to Pledge**

It is an honor to be selected for membership in Alpha Psi Omega, and prospective members work hard to meet the requirements for the societies. Chapters should state clearly what requirements must be met and how one may apply for membership. National Standards, listed in the 1997 revised National Constitution, may be raised by individual chapters but may not be lowered. It is important to keep in mind that this is an Honor Society rather than a social fraternity or sorority. Once students have achieved the requirements, they are generally invited to pledge.

Some chapters vote on prospective members who have met the requirements but may decide to wait until later to invite the student to pledge for the following reasons: there is not a sufficient number or a good balance of pledges to form a viable pledge cast, because the GPA and participation points are not sufficient, or because the cast feels that the prospective pledge needs to exhibit a better attitude toward the work or a more mature behavior. In these cases, the student should be notified officially in writing what needs to be done to achieve pledge status.

## **Hazing Policy for pledge period and initiation ceremony**

The National Office supports the policy which prohibits hazing during the initiation process. It is permissible to ask pledges to participate in activities that are fun, theatre centered, and which strengthen the relationship between the pledges and the members. No pledge may be asked to participate in any activity which is demeaning, embarrassing, or physically dangerous nor may they be harassed by current members. No pledge should be required

to participate in any activity outside of the National Requirements listed in the 1997 revised National Constitution and Ceremonies if the pledge is unable or unwilling to do so. Most pledges are willing to participate in group activities which are fun and appropriate. The pledge card indicates those pieces of information which pledges are expected to know. However, not knowing a Shakespeare selection or the Greek alphabet are not reasons for excluding the pledge from the society if an honest attempt was made by the pledge.

## **Acceptable Reasons to withdraw a pledge from pledging or initiation process**

1. Engaging in any illegal activity that would reflect negatively on the organization, program or college/university
2. Academic standards fall below the National standard or higher Local standard
3. Dismissal from a production
4. Refusal to participate in any aspect of the pledge period.



The cast of *Much Ado About Nothing*, directed by Lou Rackoff, with scene design by Hyla Stellhorn and costume design by Larry Mullican and Eric Griffis.



# University of Southern Mississippi

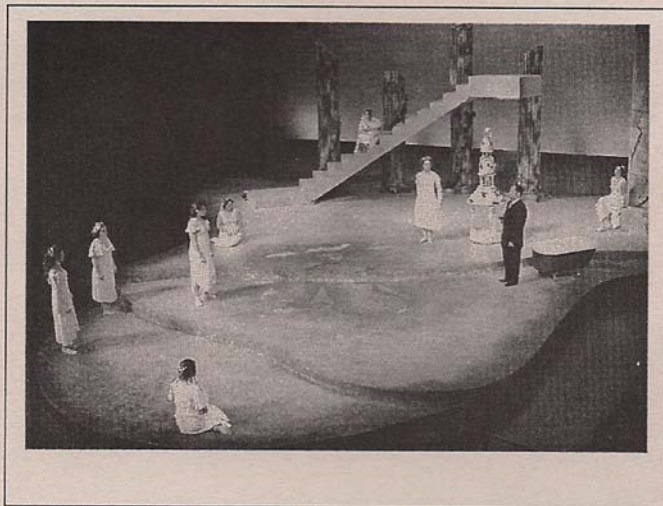
Hattiesburg, MS APO Chapter: Lambda Nu

Monica Hayes, Scot J. Mass, faculty sponsors. Other faculty and staff: Stacy Rischman, Stephen Judd, Robin Aronson, Steven Booth, Fred Lloyd, Larry D. Mullican, Mike Post, Lou Rackoff, David Stellhorn. Officers: Brad Oxnam, President; Whitney Uton, Vice-President; Courtney Higginbotham, Secretary; Heather Snider, Treasurer; Robden Sheffield, Pledge Trainer; S. Phillip Bryan, Historian; Joe Styron, Sergeant-at-Arms.

Theater season: *The Nerd*, *Coyote on a Fence*, *Much Ado About Nothing*, *I Love You, You're Perfect, Now Change*, *Shakespeare Alive!*, *Big Love*

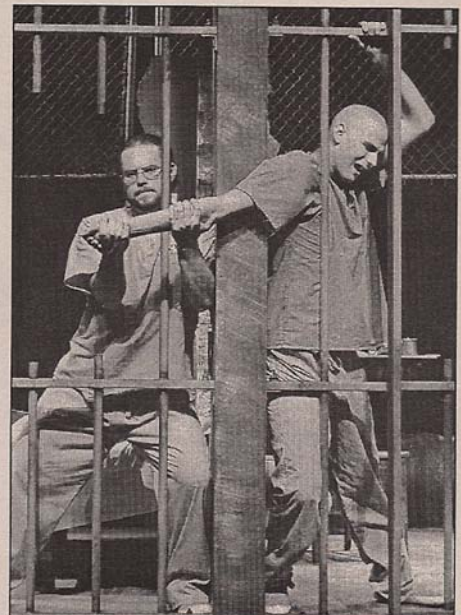


Melissa Barnick and Daniel Dauphin in *Shakespeare Alive!*, directed by Scot J. Mann, with scene design by Sal Mainnino and Skye Dickinson and costume design by Ellen Siedel.



The cast of *Big Love*, directed by Andrew Elliott, with scene design by Philip Wingerter and costume design by Eric B. Dahm.

Lee Crouse and Sal Mannino in *Coyote on a Fence*, directed by Robin Aronson, with scene design by Laura Happel and costume design by Jessica Realmuto.





Christina Cody, John Earney, and Gretchan West in *For Whom the Southern Belle Tolls*, directed by Michael L. Counts, with design by Gary M. Harris.



# Lyon College

Batesville, AR APO Chapter: Mask and Dagger

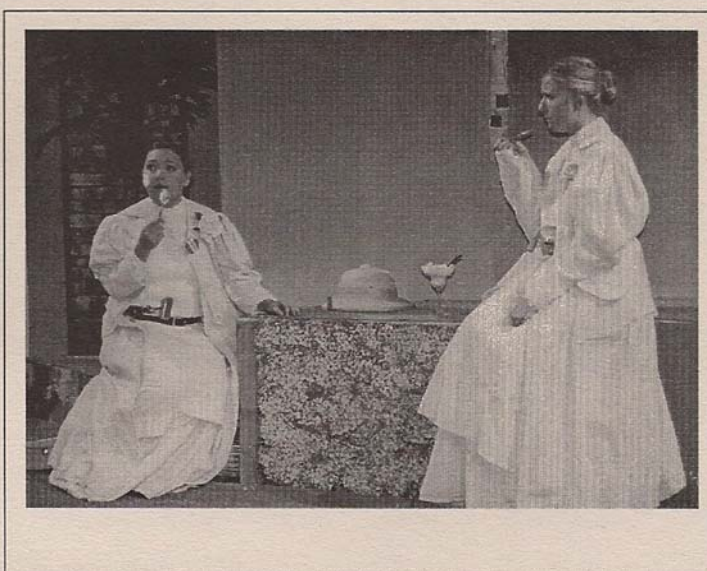
Michael L. Counts, faculty sponsor. Other faculty and staff: Gary M. Harris. Officers: Gretchan West, President; Christina Cody, Vice President; Jason Bugeja, Secretary.

Theater season: *On the Verge, Finding a Chord, For Whom the Southern Belle Tolls, It's Our Town, Too*



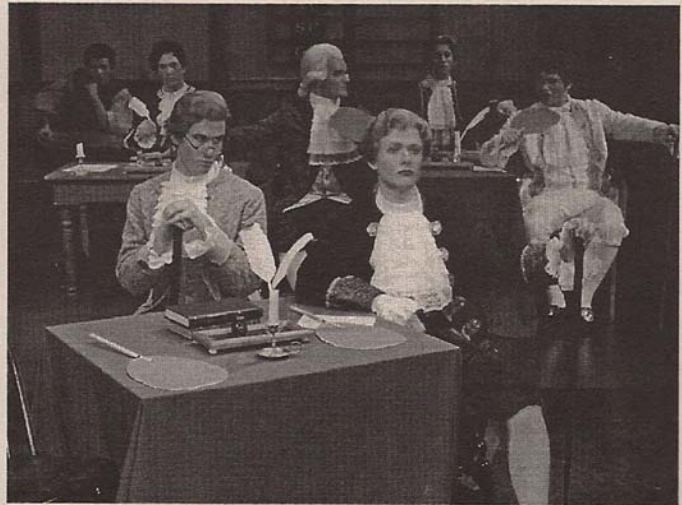
Jance Floyd, Jason Bugeja, and Jennifer Cross in *It's Our Town, Too*, directed by Michael L. Counts, with design by Gary M. Harris.

Christina Cody and Gretchan West in *On the Verge*, directed by Michael L. Counts, with design by Gary M. Harris.



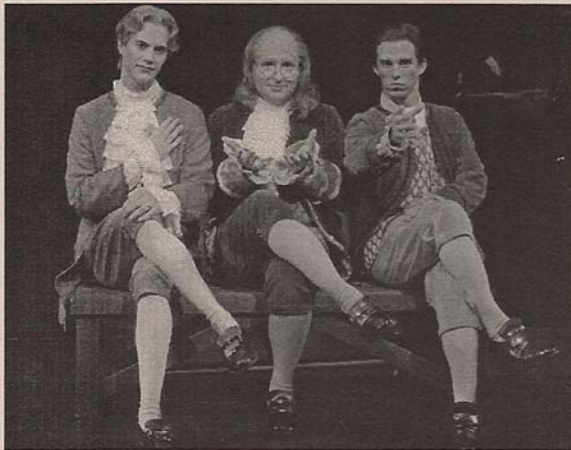


Front row: Jim Stephens, Denis Farr; back row: Filip Drambarean, Ryan Champion, Matt McKay, Nelson Barre, and Austin Crowder in *1776*, directed by James Fisher, with musical direction by Teresa O'Connell, choreography by Dana W. Fisher, scene and lighting design by James Gross, and costumes by Laura Conners.



## Wabash College

Crawfordsville, IN APO Chapter: Scarlet Masque



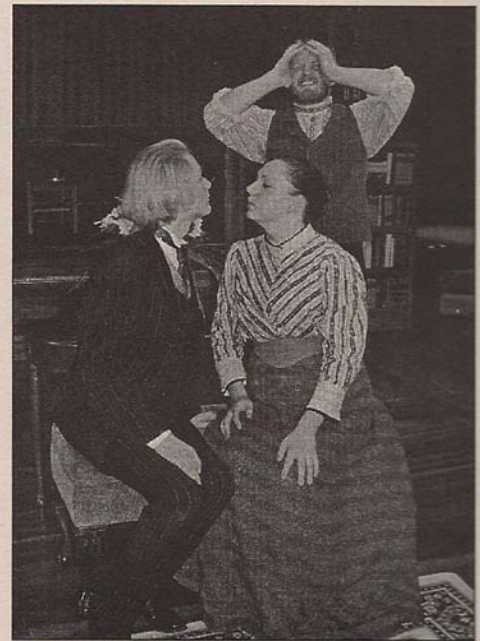
James Fisher, faculty sponsor. Other faculty and staff: Michael Abbott, Laura Conners, James Gross, Dwight Watson. Officers: Donald Claxon, President; Sterling Carter, Vice President; Brett Gann, Secretary; Richard Winters, Treasurer.

Theater season: *1776, All in the Timing, The Vaudevilles of Chekhov, This is Our Youth*

Sterling Carter, Wayne Lewis, and Jason Roberts in *1776*, directed by James Fisher, with musical direction by Teresa O'Connell, choreography by Dana W. Fisher, scene and lighting design by James Gross, and costumes by Laura Conners.



Naseema Mohammed and Wes Jacks in *This is Our Youth*, directed by Michael Abbott, with scene and lighting design by James Gross and costume design by Laura Conners.



Denis Farr, Amy Young, and Mark Mattern in *The Vaudevilles of Chekhov*, directed by Dwight Watson, with scene and lighting design by James Gross and costume design by Laura Conners.

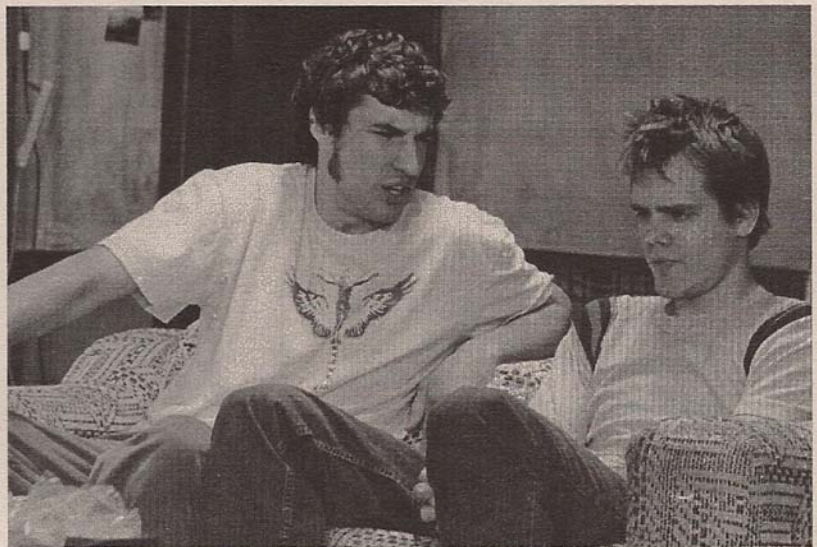




Wes Jacks, Danny Lippert, and Nick Kraynak in *The Vaudevilles of Chekhov*, directed by Dwight Watson, with scene and lighting design by James Gross and costume design by Laura Conners.

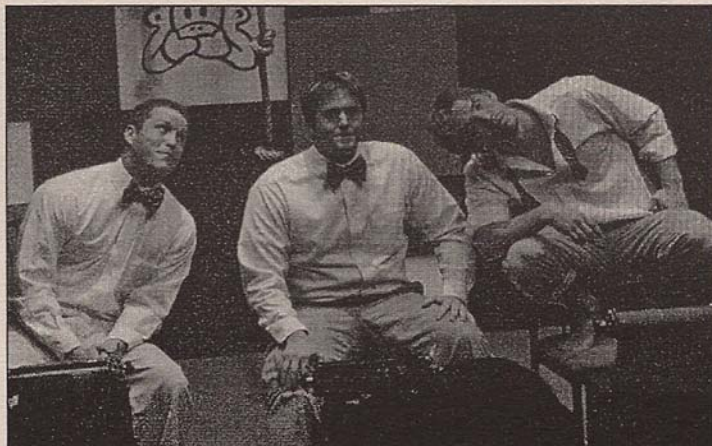


Brandon Hayes in *"Variations on the Death of Trotsky"* in *All in the Timing*, directed by Anthony Lewis, with scene design by Kyle Trusgnich (lights and sound by Tom Elliott and Joal Beane).



Andrew Dits and Wes Jacks in *This is Our Youth*, directed by Michael Abbott, with scene and lighting design by James Gross and costume design by Laura Conners.

Matthew Boston, Jonathan Koerner, and Jason Roberts in *"Words, Words, Words"* in *All in the Timing*, directed by Abby Gillan, with scene design by Kyle Trusgnich (lights and sound by Tom Elliott and Joal Beane).





Stephanie Maysonave, Anne-Caitlin Donohue, Angie Lapino, Lormarev Jones, Athena Garner, and Joanna Bunnell in *Twelfth Night*, directed by Catherine Rodgers, with scene design by Elizabeth Newton and costume design by James Cuthrell.



## Meredith College

Raleigh, NC APO cast: Eta Nu



Tom Williams and Laura Jernigan in *Nightingale*, directed by Steve Roten, with scene design by James Cuthrell and costume design by Amy Massey.

Catherine Rodgers, faculty sponsor. Other faculty and staff: James Cuthrell, Steven Roten, Bill Brown. Officers: Lormarev Jones, President; Amy Massey, Vice-President; Elizabeth Newton, Business Manager.

Theater season: *Nightingale, Twelfth Night, The Vagina Monologues, Women at Work*

Jamie McQuillkin, Cat Tucker, and Becky Jarrett in *Alabama Rain*, directed and designed by Michael McKinney.



## Wesleyan College

Macon, GA APO Cast: Phi Psi



Michael McKinney, faculty sponsor. Officers: Danielle Sawtell, President; Parrish Smotherman, Vice-President; Catherine Zophi, Secretary; Jamie McQuillkin, Treasurer; Tanarka Lakeman, Historian.

Theater season: *Alabama Rain, Steal Away, The Vagina Monologues, One False Move, Words, Words Words, Sure Thing, The Daughters of Edwin D. Boit, The Man Who Couldn't Dance, The Lesson*

Jamilla Thompson, Taniesh Milwood, Ashley Hare, Tiffany Johnson, Miya Lewis, and Materra Drafts in *Steal Away*, directed by K. B. Saine.



M. V. Pilger and Carolyn Myers in *A Company of Wayward Saints*, directed by Jill Mitten, with set design by Julie Hodge, lighting design by David E. Hunt, and costume design by Kevin McCluskey.

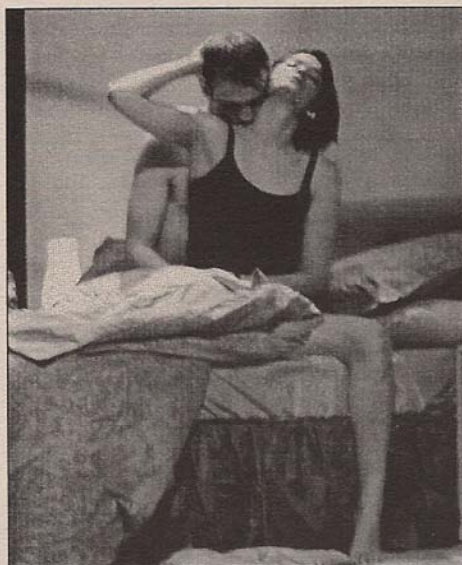


# University of Mary Washington

Fredericksburg, VA APO Chapter: Eta Eta

Gregg Stull, faculty sponsor. Other faculty and staff: Julie Hodge, Helen Housley, David E. Hunt, Kevin McCluskey, Jill Mitten. Officers: Christina A. Shutt, President.

Theater season: *Antigone*, *Godspell*, *The Shape of Things*, *A Company of Wayward Saints*



Randall C. Brown and Jillian L. Locklear in *The Shape of Things*, directed by Gregg Stull, with set design by David E. Hunt, lighting design by Julie Hodge, and costume design by Kevin McCluskey.



Jenna Clare Doolittle, Mary V. Pilger, Peter Larson, Kyle McLean, and Christian Deegan in *Antigone*, directed by Helen M. Housley, with set design by David E. Hunt, lighting design by Julie Hodge, and costume design by Kevin McCluskey.



The cast of *Godspell*, directed by Gregg Stull, with set design by Matthew Shawn Lawson, lighting design by David E. Hunt, and costume design by Kevin McCluskey.



Trey Jackson, James Willet, Sarah Smith, Katie Smith, Peggy Byers, Tim Broderick, Jr., and Joshua Porter in *Gypsy*, directed and designed by Patric McWilliams.

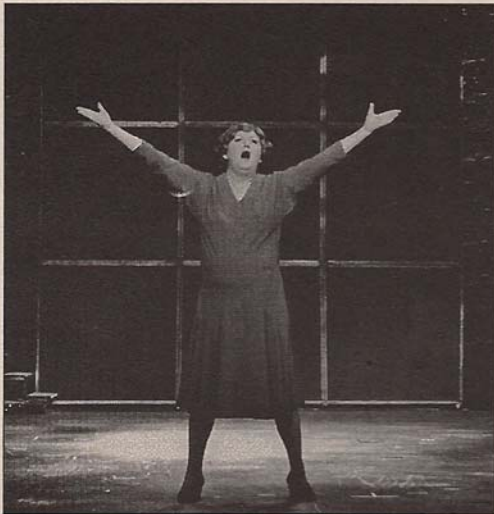


## Centenary College of Louisiana

Shreveport, LA APO Cast: Delta Iota

Robert R. Buseick, faculty sponsor. Other faculty and staff: Patric McWilliams, Jodie Glorioso, Don Hooper, Ginger Folmer. Officers: Laura Beth Sentell, President; Sarah Perkins, Vice-President; Megan Taylor, Historian; Sarah Smith, Secretary.

Theater season: *Gypsy*, *The Underpants*, *When You Comin' Back*, *Red Ryder?*, *The Distance from Here*, *The Dresser*



Peggy Byers in *Gypsy*, directed and designed by Patric McWilliams.



Jodie Glorioso, Jim Montgomery, and Patric McWilliams in *The Dresser*, directed by Robert R. Buseick, with scene design by Don Hooper and costume design by Patric McWilliams.



Sarah Smith and Jamie Norwood in *The Underpants*, directed and designed by Patric McWilliams.



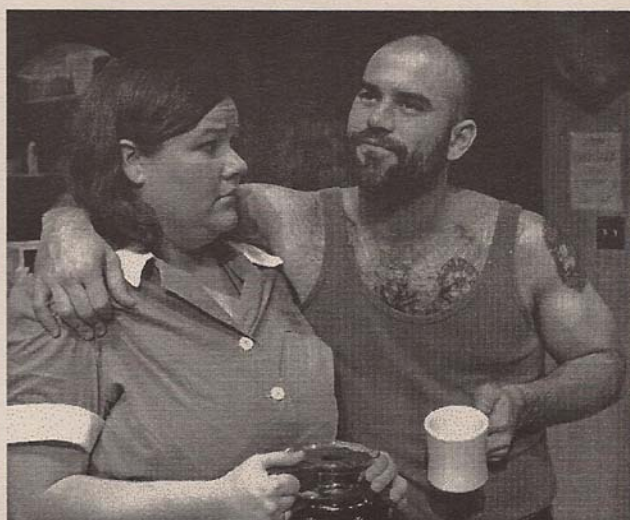
Phillip Brooks and Charity Schubert in *The Distance from Here*, directed and designed by Patric McWilliams.



Jamie Norwood, Phillip Brooks, Ashley Beckham, Shannon Shea, Jamie Sanders, Anysia Manthos, and Tim Broderick, Jr. in *When You Comin' Back, Red Ryder?*, directed by Robert R. Buseick, with scene design by Don Hooper and costume design by Patric McWilliams.



Sarah Smith and Joshua Porter in *The Underpants*, directed and designed by Patric McWilliams.



Ashley Beckham and Phillip Brooks in *When You Comin' Back, Red Ryder?*, directed by Robert R. Buseick, with scene design by Don Hooper and costume design by Patric McWilliams.



Elizabeth Odle and Andrew Nelson in *The Vise*, directed by Janice Fronczak, with scene design by David Tidwell and costume design by Mikako Toda.



# University of Nebraska at Kearney

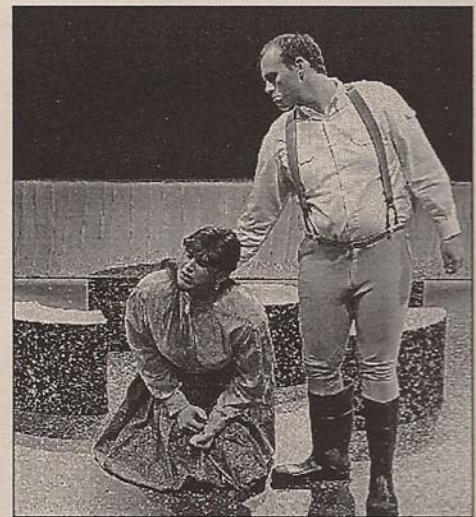
Kearney, NE APO Cast: Nu Upsilon

Jack Garrison, faculty sponsor; Daniel M. Jones, co-sponsor. Other faculty and staff: David Tidwell, Janice Fronczak, Shawn Deiger, Susan Deiger. Officers: Shauna Warren, President; Katie Miller, Vice-President; Andrew Nelson, Secretary; Charise Dawson, Publicity; Larcy Shaw, Secretary.

Theater season: *The House of Bernarda Alba*, *The Telephone*, *The Vise*, *The Lover*, *Cloud Nine*, *Phantom*



Sarah Anderson and Matthew Allen Nicholson in *The Telephone*, directed by David M. Jones, with scene design by David Tidwell and costume design by Daniel M. Jones.



Chance Hartman and Andrew Nelson in *Cloud Nine*, directed by David M. Jones, with scene design by David Tidwell and costume design by David M. Nelson.



Nicole Freburg, Sarah Ternus, and Annastasia Malcolm in *The House of Bernarda Alba*, directed by Jack Garrison, with scene design by David Tidwell and costume design by David M. Jones.



The cast of *Jekyll & Hyde*, directed by Mira Wiegmann, with scene design by Robert Olson and costume design by Mira Wiegmann.



# Concordia University

Seward, NE APO Cast: Omega Lambda

Mira Wiegmann, faculty sponsor. Officers: Kira Baldinger, President; Derek Henderson, Vice-President; Mindy Siddell, Business Manager.

Theater season: *Jekyll & Hyde*, *King of Hearts*, *The Comeback*, *speed & a red interior*, *Just One Night*



Paul Cloeter, Sarah Strohschein, Zach Willet, and Aaron Wagner in *King of Hearts*, directed by Robert Olson, with scene design by Robert Olson and costume design by Mira Wiegmann.



The cast of *speed & a red interior*, directed by Ladd Wendelin and Derek Henderson, with scene and costume design by Ladd Wendelin and Robert Stewart.

Ruth Bartels and Mike Nelson in *Just One Night*, directed and design by Mike Kipp.





The cast of *Frankenstein*, directed by Bradley A. Nies, with scene design by Thomas Muhn and costume design by Sara Jones.



## Blinn College

Brenham, TX DPO Cast #295



Morgan Borchardt in *Once Upon a Mattress*, directed by Bradley A. Nies, with scene design by Thomas Muhn and costume design by Sara Jones and Leslie Monge.

Bradley A. Nies, faculty sponsor. Other faculty and staff: Gregory Wise. Officers: James W. Robinson, President; Tyger Konarik, Vice-President; Morgan Borchardt, Secretary; Cody Riedinger, Treasurer; Henry Gundacker, Historian.

Theater season: *Frankenstein*, *A Charlie Brown Christmas*, *Once Upon a Mattress*, *Romeo and Juliet*, *Flowers for Algernon*, *The Zoo Story*

Hope Rodman and Jonathan Clark in *The Bourgeois Gentleman*, directed by Timothy Soullis, with scene design by Mark Krause and costume design by Brenda Evans.



## Transylvania University

Lexington, KY APO Cast: Alpha Epsilon Eta



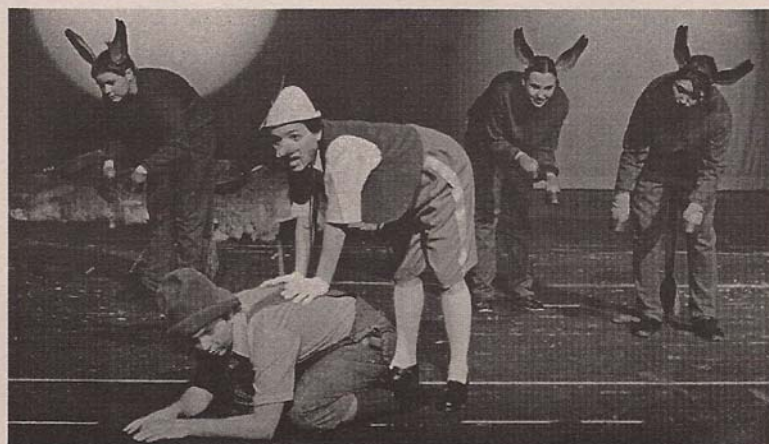
Timothy Soullis, faculty sponsor. Other faculty and staff: Mark S. Krause, Dearon Query.

Theater season: *The Bourgeois Gentleman*, *The Effect of Gamma Rays on Man-in-the-Moon Marigolds*, *Death of a Salesman*, *A Maiden's Prayer*, *The Un-*

Brooks Reitz, Chris Wells, and Jake Cunningham in *Death of a Salesman*, directed by Timothy Soullis, with scene design by Mark Krause and costume design by Susan Wigglesworth.



Michael Runion, Rachel Weisensee, Valerie German, Sara Millemon, and Rachel Hickman in *Pinocchio*, *The Puppet*, directed by Lyle Burrow, with scene design by Cindy Clinkenbeard and costume design by Melissa Rutledge.



# Missouri Southern State University

Joplin, MO APO Cast: Upsilon Omicron

Sam Claussen, faculty sponsor. Other faculty and staff: Jay Fields, Jim Lile, Patricia Kluthe, Anne Jaros, Gerrie-Ellen Johnston, Anne Lile, Brenda Jackson, Lyndall Burrow. Officers: Rachel Mastin, President; Aaron Stockton, Vice-President; David Pearson, Secretary; Bryan Whyte, Historian.

Theater season: *The Guys*, *Love Letters*, *An Evening with Chekhov: The Celebration*, *The Brute*, *The Marriage Proposal*, *Pinocchio*, *The Puppet*, *The Musical Comedy Murders of 1940*, *Snow White and the Seven Dwarfs*, *An Evening of Student-Directed One-Act Plays: Sorry Wrong Number*, *For Who the Southern Belle Tolls*, *Trifles*, *Visitors from Chicago*



Andrew White and Rachel Hickman in *The Musical Comedy Murders of 1940*, directed by Rachel Mastin, with scene design by Branden "Bear" Tucker, costume design by Jimmy Noriega, and lighting designer by Andrew Thompson.



Cory Childers and Jade Leggott in *The Celebration*, directed by Jim Lile, with scene design by Sam Claussen, costume design by Anne Jaros, and lighting design by Jessie Claussen.



Rachel Mastin and Andy White in *Visitor from Chicago*, directed and designed by Ben Horine.



Durron Tyre, Duke Lafoon, John Fox, and Amy Wolf in *Sly Fox*, directed by Walter Schoen, with scene design by W. Reed West III and costume design by Nancy Allen.



# University of Richmond

Richmond, VA APO Cast: Eta

W. Reed West III, faculty sponsor. Other faculty and staff: Nancy Allen, David Bridgewater, Myra Daleng, Phil Hayes, Dorothy Holland, Duke Lafoon, Chuck Mike, Debbie Mullin, Daryl Phillips, Leslie Pope, Catherine Shaffner, Walter Schoen, Anne Van Gelder, Scott Wichmann. Officers: Julie Dauber, President; Andy Nagraj, Vice-President; Alyson Wepplo, Secretary; Erin Gilligan, Business Manager; Laura K. Corless, Historian.

Theater season: *The Furies, Sly Fox, Fiddler on the Roof*



The cast of *The Furies*, directed by Dorothy Holland, with scene design by W. Reed West III and costume design by Leslie Pope

Tori Foster, Heather Shields, Molly Bamberger, Sean Hudock, Alyson Wepplo, Catherine Shaffner, and Walter Schoen in *Fiddler on the Roof*, directed by Dorothy Holland, with scene design by W. Reed West III and costume design by Nancy Allen.



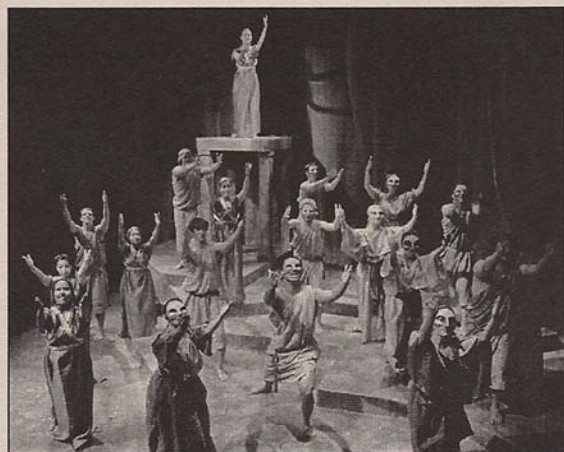


The cast of *Lysistrata*, directed by Jennifer S. Holmes, with scene design by Shing Khor, costume design by Carin Jacobs, lighting design by Stephen Bowman, choreography by Jennifer S. Holmes, Napoleon Tavale and Hokuto Konishi, sound design by Ben Calabaza, and original music by Russ Litchfield.



# Whittier College

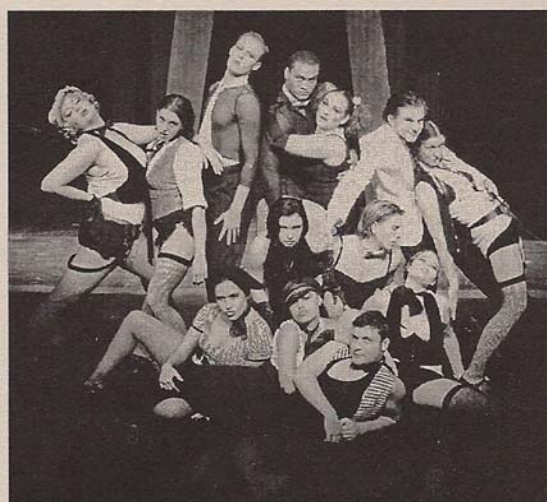
Whittier, CA APO Cast: Pi Mu



Brian A. Reed, faculty sponsor. Other faculty and staff: Jack de Vries, Jennifer S. Holmes, Melissa Manlowe, Richard Cheatham, David C. Palmer. Officers: Ivy Worsham, President; Robin Kasahara, Vice-President; Christina Gutierrez, Secretary; Cathy Johnson, Treasurer.

Theater season: ***Cabaret, Boxes, Lysistrata***

The cast of *Lysistrata*, directed by Jennifer S. Holmes, with scene design by Shing Khor, costume design by Carin Jacobs, lighting design by Stephen Bowman, choreography by Jennifer S. Holmes, Napoleon Tavale and Hokuto Konishi, sound design by Ben Calabaza, and original music by Russ Litchfield.



Cody Goulder, Robin Kasahara, Tyrel Castro, and Mike Ettel in *Boxes*, written and directed by Jack de Vries, with scene design by Brian A. Reed, costume design by Carin Jacobs, lighting design by Stephen Bowman, and sound design by Jack de Vries.

The cast of *Cabaret*, directed and choreographed by Jennifer S. Holmes, with scene and lighting design by Brian A. Reed, costume design by Carin Jacobs, and sound design by Jarmil Maupin.



Laurie Eller and Van Pataxcil in *The Ash Girl*, directed by Mary Emily O'Bradovich, scene design by Travis Smith, and costume design by Peggy McBride.



## Piedmont College

Demorest, GA APO Cast: Alpha Beta Gamma

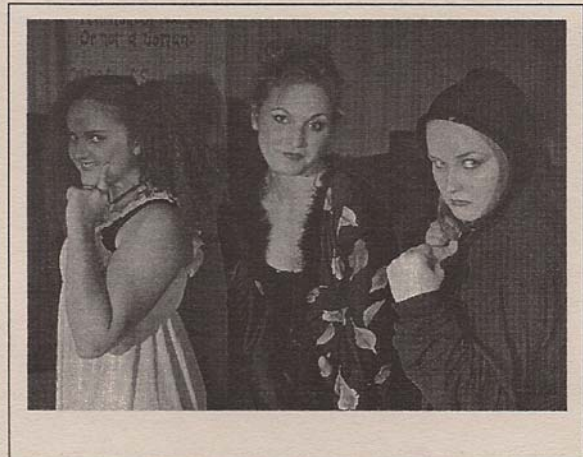
Richard M. Rose, faculty sponsor. Other faculty and staff: Mary Emily O'Bradovich, Travis Smith. Officers: Danielle Bailey, President; Meredith Kisingen, Vice-President; Eric Mathews, Business Manager.

Theater season: *Savoring the Brew: A Taste of Shakespeare's Women, Oedipus the King, The Baker's Wife, The Ash Girl*



Jeremy Bishop in *Oedipus the King*, directed and designed by Travis Smith, with costume design by Travis Smith and Peggy McBride.

Sarah Baer, Danielle Bailey, Jennifer Ferst in *Savoring the Brew: A Taste of Shakespeare's Women*, directed by Mary Emily O'Bradovich, with scene design by Travis Smith.

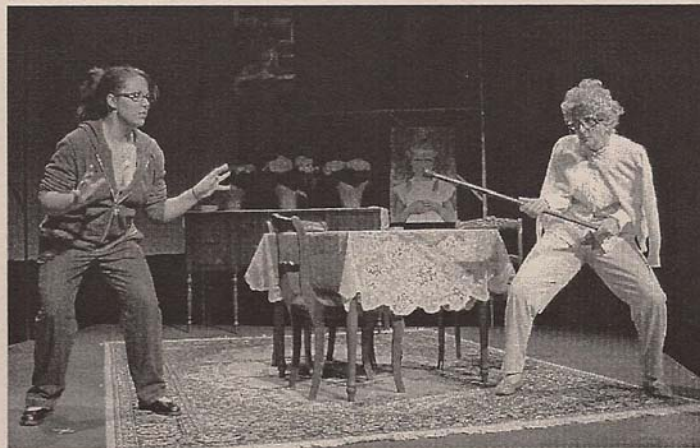


The cast of *The Baker's Wife*.





Melissa Pesaro and Deborah Gideon in *Last Lists of My Mad Mother*, directed by Kerry Mulvaney Ferguson, with scene design by John Bald.



## Converse College

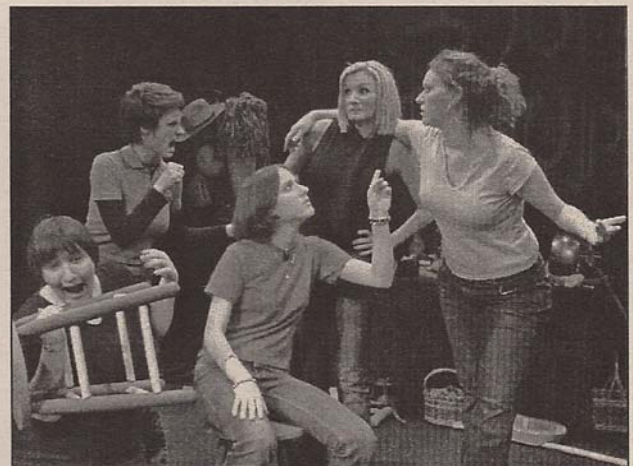
Spartanburg, SC APO Cast: Pi Pi

John Bald, faculty sponsor. Other faculty and staff: Mary Nicholson, Steve Hunt, Sharon Rochester. Officers: Brandy Wyont, President; Kristin Baehr, Vice-President; Melissa Pesaro, Business Manager.

Theatre season: *Anton in Show Business*, *Garden Air*, *Little Black Dress*, *Same Ol' Routine*, *Last Lists of My Mad Mother*, *Uncommon Women & Others*



Kristin Danko and Robert Searle in *Garden Air*, directed and designed by Quintina Clemons.



Kristin Baehr, Gretchen Guggenheim, Jennifer Howard, Grace Wepner, and Kristin Danko in *Vegetable Soup Troupe*, directed by Kristin Danko.



Kara Dixon, Libby Long, Kristin Danko, Jennifer Howard, Kellie Edwards, Kristin Baehr, and Amanda Wilson in *Uncommon Women & Others*, directed by Mary Nicholson.



Samantha Mason and Brian Heyman in *[sic]*, directed by Ryan Oliver, with scene design by Christopher Cherkis, lighting design by Greg Brewster, sound design by Matthew Boudreau, and costume design by Kayla Greeley.



# State University of New York at Oswego

Oswego, NY APO Cast: Mu Iota

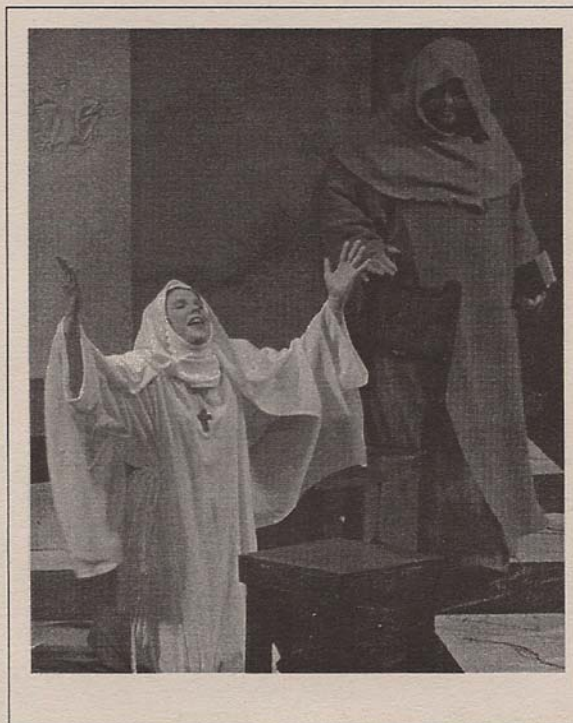
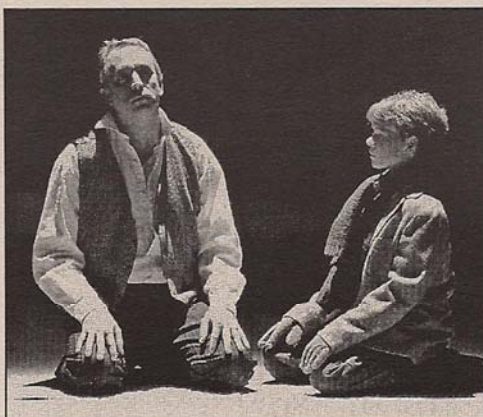
Mark Cole, faculty sponsor. Other faculty and staff: Joseph Rial, Kitty Macey, Jonel Langenfeld-Rial, Paul Savas, Judy McCabe, Johan Godwaldt, Michael De Almeida, Kelly Cullinan. Officers: Michael Climek, President; Zachary Levin, Stage Manager; Ryan Oliver, Business Manager.

Theater season: *Infinity's House*, *[sic]*, *Big: The Musical*, *Measure for Measure*



Zach Levin and Ryan Powers in *Big*, directed by Jonel Langenfeld-Rial, with choreography by Cheryl Wilkins-Mitchell, musical direction by Todd Graber, scene design by Joe Rial, lighting design by Johan Godwaldt, sound design by Michael de Almeida, and costume design by Kitty Macey.

Eric Cronk and Tiemen Godwaldt in *Infinity's House*, directed by Paul Savas, with scene and lighting design by Joseph Rial, sound design by Michael de Almeida, and costume design by Kitty Macey.



Samantha Mason and Zach Levin in *Measure for Measure*, directed by Mark Cole, with scene design by Johan Godwaldt, lighting design by Gregory Brewster, sound design by Michael de Almeida, and costume design by Kitty Macey.



Erik Faulds, Lindsey Ressman, Lauren Wycough, Trey Westerburg, and Steve Lassiter in *The Musical Comedy Murders of 1940*, directed by Rebecca Faulds, with scene design by Clarence Strickland, costume design by Jacque Shackelford, and lighting design by Jacob Davis.

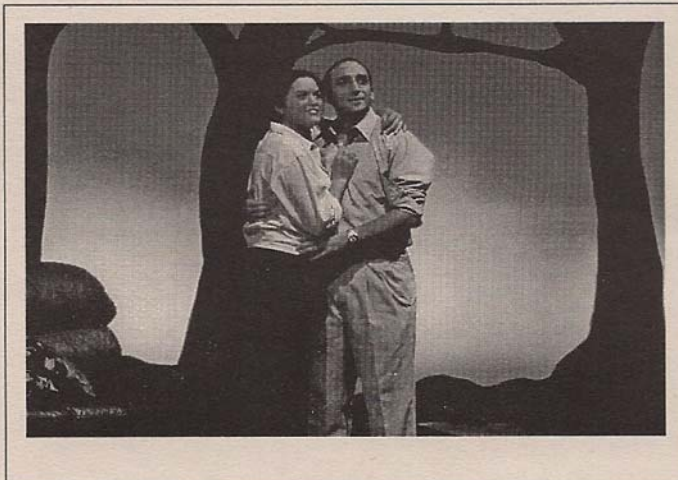


# Tyler Junior College

Tyler, TX DPO Cast: 295



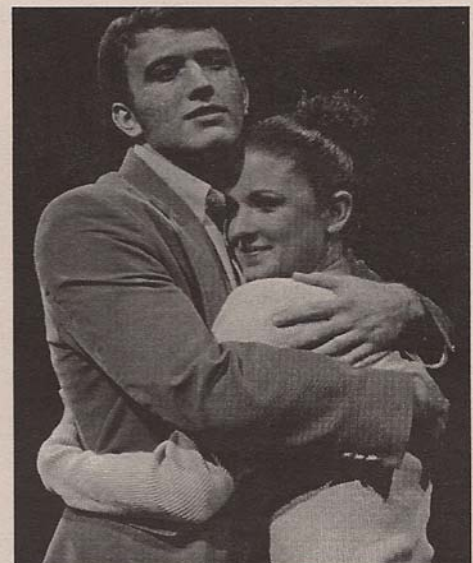
Taylor Flowers and Jacob Davis in *Scrooge*, directed and designed by Clarence Strickland, with costume design by Jacque Shackelford.



Katie Jones and Taylor Flowers in *Book of Days*, direction and costume design by Jacque Shackelford, with scene design by Clarence Strickland.

Victor L. Siller, faculty sponsor. Other faculty and staff: David W. Crawford, Rebecca Faulds, M'Liss Hindman, Jacque Shackelford, Clarence Strickland, Steve Westhafer. Officers: Jared Davis, President; Cody W. Crawford, Vice-President/Sergeant-at-Arms; Erik Faulds, Secretary; Lindsey Ressman, Treasurer; Holly Bell, Historian; Steve Lasiter, Student Senate Representative.

Theater season: *Harvest, Book of Days, Scrooge, The Night Thoreau Spent in Jail, The Musical Comedy Murders of 1940, Children of a Lesser God*



Cody W. Crawford and Sara Spradlin in *Children of a Lesser God*, directed by Victor L. Siller, with scene design by Clarence Strickland and costume design by Jacque Shackelford.





Bradley Troll and Cat Oubre in *Oleanna*, directed and designed by John Abegglen, with lighting design by Stanton Morris.

Michelle Watsky and Jeffrey Cramer in *Proof*, directed by Charles McNeely, III, with scene design by John Abegglen, lighting design by Stanton Morris, and costume design by Diane Rathbun.



## McNeese State University

Lake Charles, LA APO Cast: Pi Gamma



Alli Partin in *Little Shop of Horrors*, directed by Michele Martin, with musical direction by William Rose, choreography by Lewis Whitlock III, scene design by John Abegglen, and costume design by Diane Rathbun.

Charles McNeely, III, faculty sponsor. Other faculty and staff: Susan Kelso, John Abegglen, Lewis Whitlock III, Anita Tritico. Officers: Jeff Cramer, President (Fall 2004); Lauren Martin, President (Spring 2005); Debra McGee, Vice-President (Fall 2004); Michelle Watsky, Vice-President (Spring 2005); Cathlyn Oubre, Secretary-Treasurer (Fall 2004); Jonathan Harvey, Secretary-Treasurer (Spring 2005); Lauren Martin, Archivist; Jonathan Harvey, Senator (Fall 2004); Alli Partin, Senator (Spring 2005).

Theater season: *Oleanna*, *Proof*, *The Woman in Black*, *Libation Bearers*, *Little Shop of Horrors*



Nettra Arceneaux and Lauren Martin in *Libation Bearers*, conceived and directed by Susan Kelso, with scene and lighting design by John Abegglen and costume design by Diane Rathbun.



Adam Vadasz, Peter Brown, and Annie Fletcher in *All in the Timing*, directed by Ray Wills, with scene design by Nadine Charlsen and costume design by Karen Lee Hart.



# Kean University

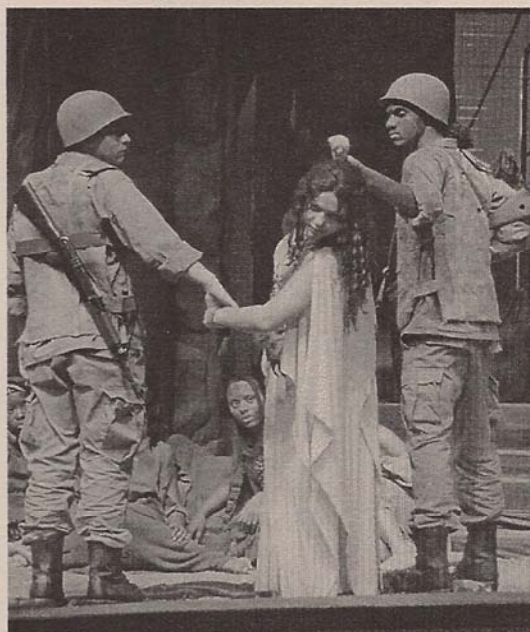
Union, NJ APO Cast: Alpha Gamma Gamma



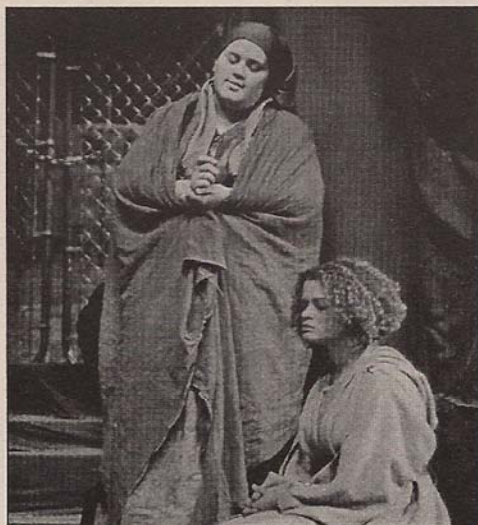
Helen McTernan, Kristen Bussiere, Cat Hardy, Kaitlin Kirwan, and Annie Fletcher in *Once Upon a Mattress*, directed by Holly Logue, with scene design by Nadine Charlsen and costume design by Karen Lee Hart.

Teresa Choate, faculty sponsor. Other faculty and staff: Karen Lee Hart, Nadine Charlsen, Ernest Wiggins, Holly Logue. Officers: Kristen Bussiere, President; Helen McTernan, Vice-President; Joseph Zehnder, Business Manager.

Theater season: *Once Upon a Mattress*, *The Trojan Women*, *All in the Timing*



Mike Anzaldi and Jules Jorgenson in *The Trojan Women*, directed by Ernest Wiggins, with scene design by Nadine Charlsen and costume design by Karen Lee Hart.



Karina Munoz and Cat Hardy in *The Trojan Women*, directed by Ernest Wiggins, with scene design by Nadine Charlsen and costume design by Karen Lee Hart.



Kristen Martin in *The Vagina Monologues*, directed and designed by Phoebe Hall.



# Fayetteville State University

Fayetteville, NC APO Cast: Phi Nu

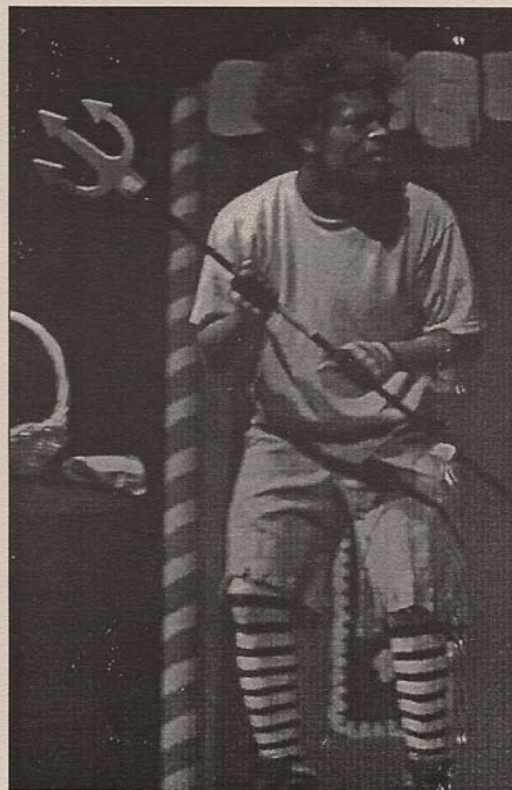
Phoebe Hall, faculty sponsor. Other faculty and staff: Harmon Watson, James Knight, Chrisita Joyce Woods, Marvin Curtis, Eric Hyman. Officers: Stacy Staton, President; Stan Harris, Vice-President.

Theatre season: *Same Time Next Year, The Glass Menagerie, Hansel and Gretel, Miss Julie, The Vagina Monologues*



Carmen Guzman in *The Vagina Monologues*, directed and designed by Phoebe Hall.

Christial Campbell in *Miss Julie*, direction and costume design by Chrsita Joyce Woods, with scene design by James Knight.



Terrell Bolden in *Hansel and Gretel*, direction and costume design by Ginny Hughes and Joie Gross, with scene design by James Knight.



Jared Smith and Stephanie Lamb in *The Cherry Orchard*, directed by Melissa Green, with scene design by F. Larry Wheeler and costume design by Lauren Clemons and Cassie Latham.



# Hardin-Simmons University

Abilene, TX APO Cast: Zeta Theta

F. Larry Wheeler, faculty sponsor. Other faculty and staff: Melissa Green. Officers: Michael Floyd, President; Stephanie Lamb, Vice-President; Diana Barr, Secretary; Lauren Clemons, Historian; Chesna Riley, Pledge Master.

Theater season: *Proof*, *Transposing Shakespeare*, *The Cherry Orchard*, *Blithe Spirit*, *World Without Memory*, *Ah, Eurydice!*, *Blind Date*, *We Were*, *The Siren Song of Stephen Jay Gould*, *The Guys*



Seth Humble and Chesna Riley in *Ah, Eurydice!*, directed and designed by Dustin Henry.



Jared Smith and Kimberly Jackson in *Proof*, directed by Melissa Green, with scene design by F. Larry Wheeler and costume design by Lauren Clemons and Cassie Latham.



Wayne Holder, Carrie Helms, and Melissa Graves in *Blithe Spirit*, directed by Michael Floyd, with scene design by F. Larry Wheeler and costume design by Billie Harvey.

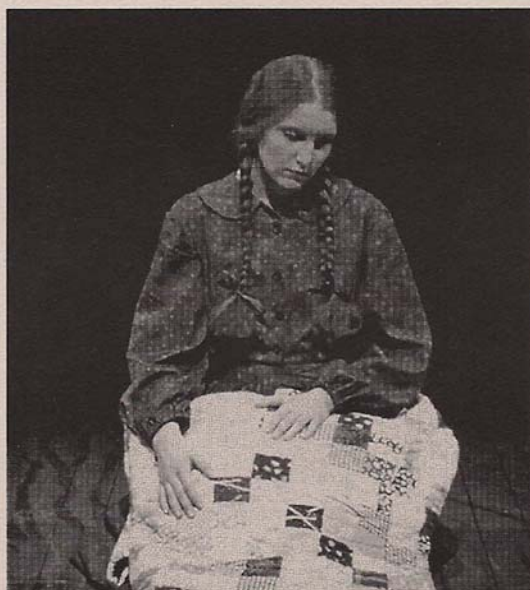


Carrie Sumner, James E. York III, Matt Swan, and Michael Redman in *R.U.R.*, directed and designed by David Ruebhausen, with costumes by Angela Green.



# University of North Alabama

Florence, AL APO Cast: Zeta Rho



Amanda Maddow in *Quilters*, directed by Angela Green, with scene design by David Ruebhausen and costume design by Angela Green and Lisa Bordelon.

Jennifer Salter, Michael Redman, Daryl Crittendon, Chris Bedwell, and J. Scott Long at the Edward Albee Last Frontier Theatre Festival in Valdez, Alaska.

David Ruebhausen, faculty sponsor. Other faculty and staff: Angela Green, Charlton James. Officers: Ryan Taylor, President; Drew Hampton, Vice-President; Carrie Sumner, Secretary/Treasurer.

Theater season: *The Rocky Horror Show*, *The Shadow Box*, *Quilters*, *R.U.R.*, *The Little Prince*, *God's Man in Texas*



Robert Ingram and J. Daniel Brown in *God's Man in Texas*, directed by Ryan Taylor, with scene design by Michael Redman and costume design by Jennifer Salter.

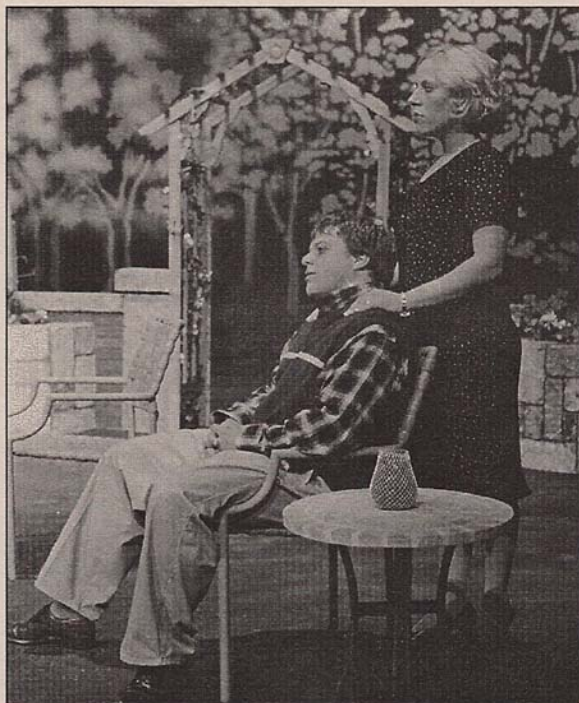






Eric Sizemore, Telisha Montgomery, Dustin Wilkins, Jennifer Higginbotham, and Michael Redman in *The Rocky Horror Show*, direction and costume design by Angela Green, with scene design by David Ruebhausen.

Chris Bedwell, Michael Redman, J. Scott Long, Daryl Crittendon, Dawson Moore, Amanda Maddox, and Jennifer Salter at the Edward Albee Last Frontier Theatre Festival in Valdez, Alaska.



Chris Wingo and Kelly Nash in *The Shadow Box*, directed and design by David Ruebhausen, with costumes by Angela Green.

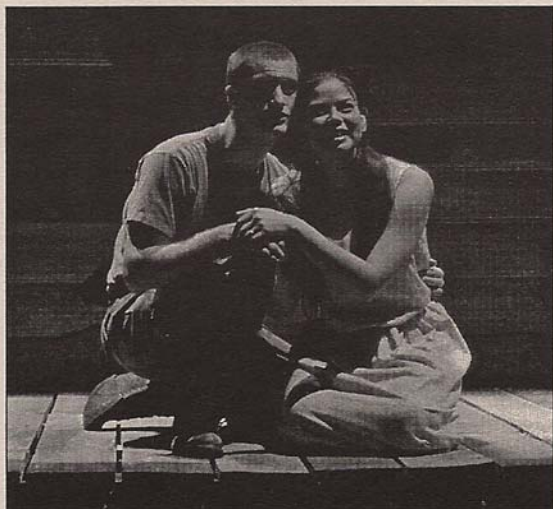
April Turman and Michael Bradley in *The Little Prince*, directed by Angela Green, with scene design by David Ruebhausen and costume design by Lisa Bordelon.





# College of William & Mary

Williamsburg, VA APO Cast: Alpha Delta Nu



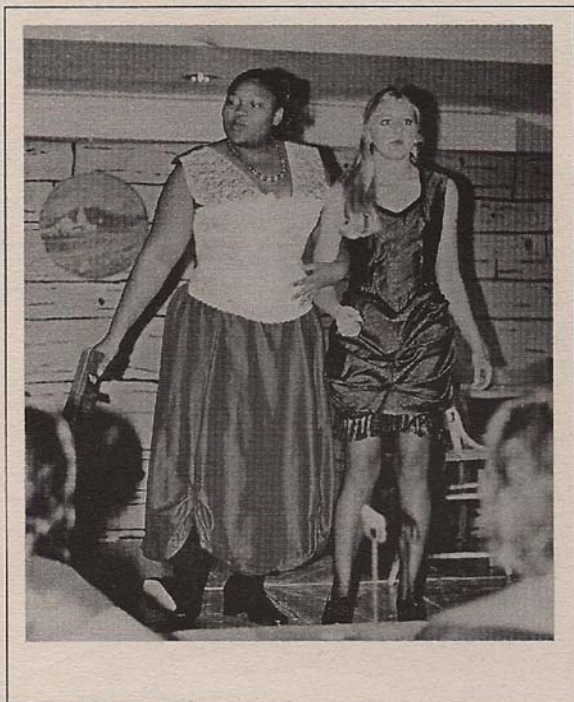
Annie Mueller and Andrew Lupo in *Alchemy of Desire/Dean Man's Blues*, directed by Elizabeth Wiley.

Elizabeth Wiley, faculty sponsor. Other faculty and staff: Steve Holliday, Richard Palmer, Michael Mehler, David Dudley, Gary Green, Laurie Wolf, Dorothy Chansky, Tric Wesp, Chris Westburg, Linda Revolinsky, Jen Thomas, Mary Jo Damon, Joan Gavalier, Sarah Dixon, Christopher Robbins.

Theater season: *Bat Boy: The Musical*, *The Merchant of Venice*, *Alchemy of Desire/Dean Man's Blues*, *The Madwoman of Chaillot*, *The Birthday Party*, *Talk Radio*, *Premiere Theatre: An Evening of New Plays*

# Murray State College

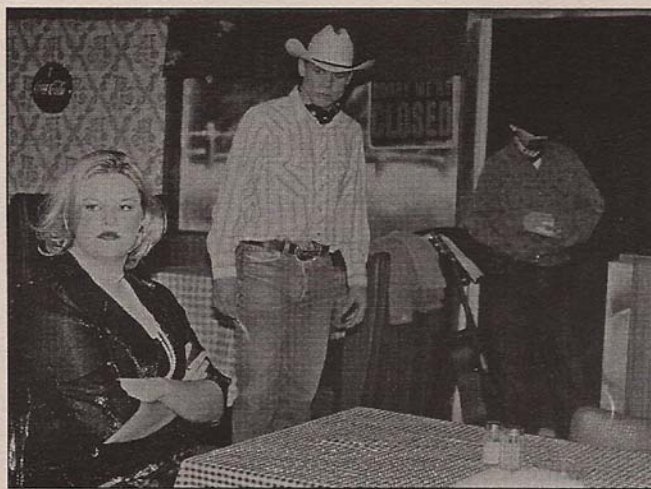
Tishomingo, OK DPO Cast: 159



Emerald Hall and Kristen Jackson in *Deadwood Dick*, directed by Lisa Coulter, with costume design by Charlotte Estep.

Lisa Coulter, faculty sponsor. Other faculty and staff: Fred Poe. Officers: Kayla Rolen, President; Lydia Schammerhorn, Vice-President; Shari Cupples, Secretary.

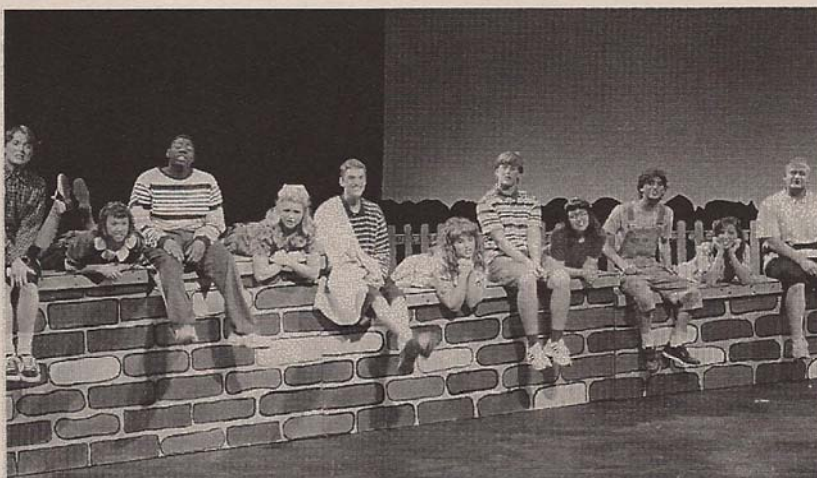
Theater season: *Deadwood Dick*, *Bus Stop*



Shandi Cospo, Jacob Hamilton, and Ronda Roberts in *Bus Stop*, directed by Lisa Coulter.



The cast of *Snoopy: The Musical*, directed by Adena Moree, with scene design by Charles Yeager and costume design by John Patton.



## Troy University

Troy, AL APO Cast: Eta Sigma



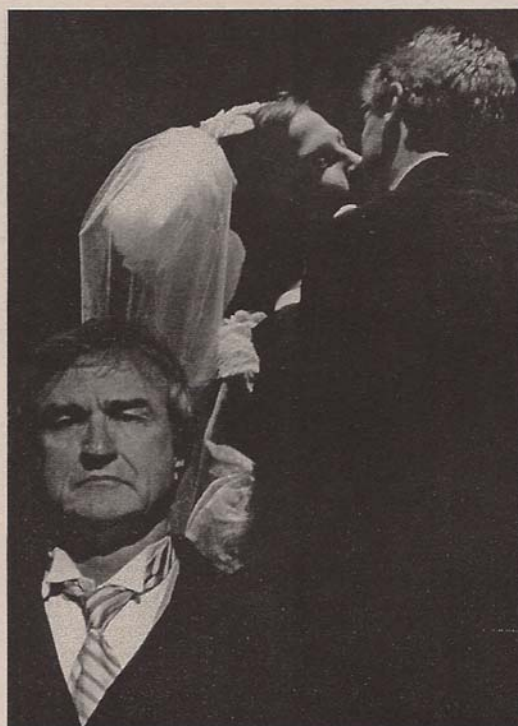
Tommy Newman and Erin Turner in *She Loves Me*, directed by Adena Moree, with scene design by Charles Yeager and costume design by Jessica Culpepper.



C. J. Wilson and Georgia Mallory in *The Guys*, directed by Adena Moree, with scene design by Chris Rich and costume design by John Patton.

Adena Moree, faculty sponsor. Other faculty and staff: John Patton, Chris Rich, David Dye, Tanya Searle, Chris Nixon. Officers: Georgia Mallory, President; Tara Golson, Vice-President; Michael Lang, Secretary; Courtney West, Treasurer; Lisa Michaels, Historian.

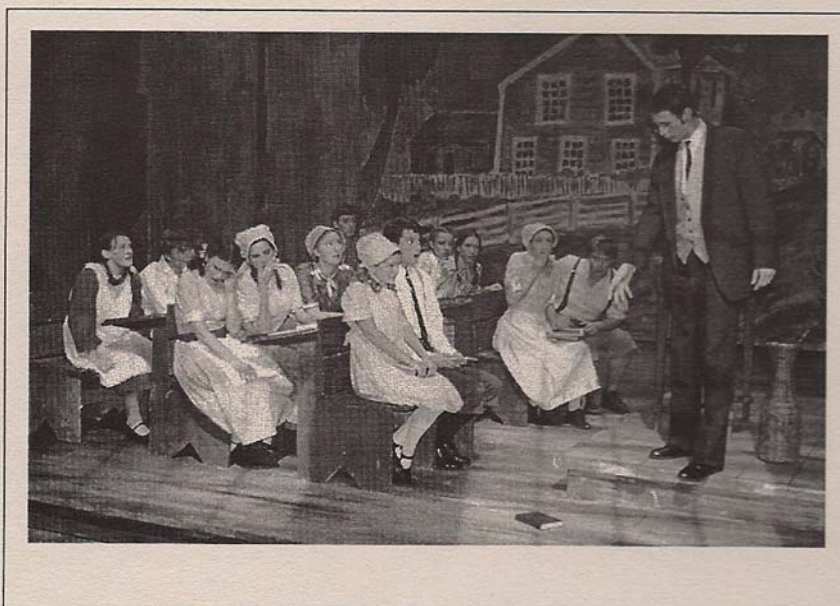
Theater season: *She Loves Me*, *The Guys*, *Our Town*, *Snoopy: The Musical*, *Tartuffe*



Ed Hicks, Erin Turner, and Nathan Benton in *Our Town*, directed by Adena Moree, with scene design by Chris Rich and costume design by John Patton.



The cast of *The Adventures of Tom Sawyer*, direction and costume design by Janice Pletcher, with scene design by Cory Rodeheaver.



# Taylor University

Upland, IN APO Cast: Sigma Beta

Janice Pletcher, faculty sponsor. Other faculty and staff: Jessica Rousselow-Winquist.

Theater season: *The Adventures of Tom Sawyer*, *The Importance of Being Earnest*, *Copenhagen*



The cast of *The Adventures of Tom Sawyer*, direction and costume design by Janice Pletcher, with scene design by Cory Rodeheaver.



Jason Burkey, Joshua Zehnder, Abigail Seward, and Kristi Thoryk in *The Importance of Being Earnest*, direction and costume design by Janice Pletcher, with scene design by Cory Rodeheaver.



Joshua Zehnder, Annie Calhoun, and Aaron Leu in *Copenhagen*, direction and costume design by Jessica Rousselow-Winquist, with scene design by David Phillips.



Ken Franks, Liane Moffat, Kera Dacy, Alex Jeffrey, Sttelly Jocis, and Stefanie Fullbright in *The Member of the Wedding*, directed by Jack Heifner, with scene design by Tomy Matthys and costume design by Barbara Blackwell.



## Stephen F. Austin State University

Nacogdoches, TX APO Cast: Beta Phi

Allen Oster, faculty sponsor. Other faculty and staff: Richard Berry, C. W. Bahs, Angela Bacarisse, Juanita Finkenberg, Jack Heifner, Rick Jones, Tomy Matthys, Alan Nielsen, Shari Watterston Ellsworth, Barbara Blackwell, Nelda Hartley, Steve Shirey. Officers: Erin Orr, President; Marie Charlson, Vice-President; Tori Thompson, Secretary; Whitney Smith-Nelson, Treasurer; Jacquelyn Green and Natalie Melcher, Historians.

Theater season: *Hair*, *Six Characters in Search of an Author*, *Harvey*, *The Member of the Wedding*

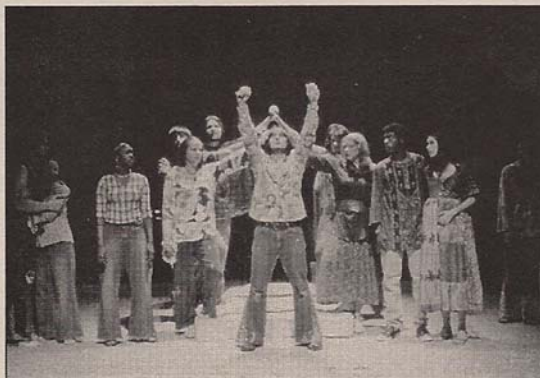


Ashleigh "Grace" Lubedr and Alexandria Glazener in *Six Characters in Search of an Author*, directed by Rick Jones, with scene design by Tomy Matthys and costume design by Angela Bacarisse.



Micah Goodding and Boni Newberry in *Harvey*, directed by Alan Nielsen, with scene design by Tomy Matthys and costume design by Val Winkelman.

The cast of *Hair*, directed by Allen Oster, with scene design by Tomy Matthys and costume design by Angela Bacarisse.





Kyslick Smith and the cast of *Black Nativity*, directed by Donna Bradby, with scene design by Jeff Richardson and costume design by Laura Simcox and Felicia Wilson.



# North Carolina A&T University

Greensboro, NC APO Cast: Phi Epsilon

Frankie Day, faculty sponsor. Other faculty and staff: Vanita Vactor, Miller Lucky, Jr., Jeffrey L. Richardson, Laura Simcox, Carla Faye Robinson, Preston Lane, Tina Yarborough, Donna Baldwin-Bradby. Officers: Kyslick Smith, President; Angelique Foster, Vice-President; Alicia Andrews, Secretary; Jasmine Taylor, Treasurer; Dorothy Lennon, Ms. Apha Psi Omega; Shannon Jones, Dean of Pledges.

Theater season: *Crowns, Plaza Suite, Black Nativity, A Raisin in the Sun*



Tasha White in *A Raisin in the Sun*, directed by Vanita Vactor, with scene design by Jeff Richardson and costume design by Felicia Wilson.



Cameron Dashiell in *Crowns*, directed by Frankie Day, with scene design by Jeff Richardson and costume design by Melissa Panzarelo.

Celebrated actor Avery Brooks with Frankie Day, faculty sponsor of the Phi Epsilon cast of APO at North Carolina A&T and National Vice-President of Alpha and Delta Psi Omega.





# Meeting Minutes

**National Meeting of Alpha and Delta Psi Omega  
Southeastern Theatre Conference, Greensboro, North Carolina  
March 4, 2005**

Alpha and Delta Psi Omega President Teresa Choate called the meeting to order at 4 p.m. She introduced Vice-President Frankie Day and National Business Manager James Fisher. In her remarks, President Choate welcomed John Bald, APO Region 4 Representative, and the many faculty sponsors and members crowded into the Augusta B Room at Greensboro, North Carolina's Sheraton/Khoury Conference Center.

President Choate went on to discuss the importance of "networking" among the chapters and invited discussion of strategies for fund-raising and community-building at local chapters and within regions. She introduced National Business Manager James Fisher, who announced the winners of the 2005 APO/DPO Scholarships. He introduced Christina Whittaker, one of the winners, who was present for the meeting – she was greeted by a prolonged round of applause by the membership. The officers encouraged the membership to apply for the two annual scholarships which provide winners with an unrestricted \$500 award.

President Choate read the national hazing statement, reminding the membership that hazing is deemed unacceptable by APO/DPO. She encouraged more constructive uses of energy during the initiation process for membership in APO/DPO. She also pointed out that forms and supplies were available and that National Business Manager James Fisher would be making APO pins available at the end of the session.

Discussion then turned to the national website for APO/DPO. President Choate expressed appreciation to webmaster Joel Lord and reminded the membership of the website addresses ([www.alphapsiomega.org](http://www.alphapsiomega.org) and [www.deltapsiomega.org](http://www.deltapsiomega.org)) and indicated that improvements to the site are continuing.

The search for a new National Business Manager was discussed and President Choate offered a rundown of the duties of that position, inviting interested parties to apply to the current officers.

President Choate encouraged regional gatherings and other "networking" events and opened the floor to a general discussion of effective strategies for inspiring both. This discussion grew into a more wide-ranging question-and-answer period during which traditions, pledging policies, reactivation concerns, etc., were discussed.

As 5:30 p.m. approached, President Choate invited the membership to enjoy refreshments and to continue the discussions informally. The meeting adjourned at 5:25 p.m.

**NEXT NATIONAL MEETING: Southeastern Theatre Conference, Orlando, Florida, March 2006.**

---